

Proposed Pipeline - Sandpiper	Existing Enbridge Pipelines	Tract Boundary	Facility Boundary
Foreign Pipes	Transmission Lines	Environmental Survey Area (ESA)	Previously Sited Facility Boundary
SPREAD BREAK	Milepost - Sandpiper	Potential Block Valve	Section Lines

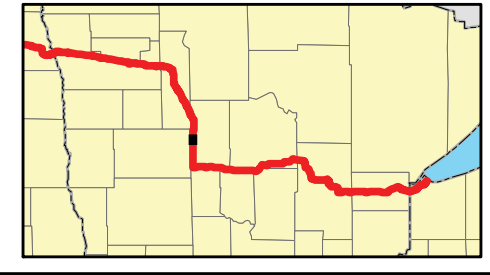
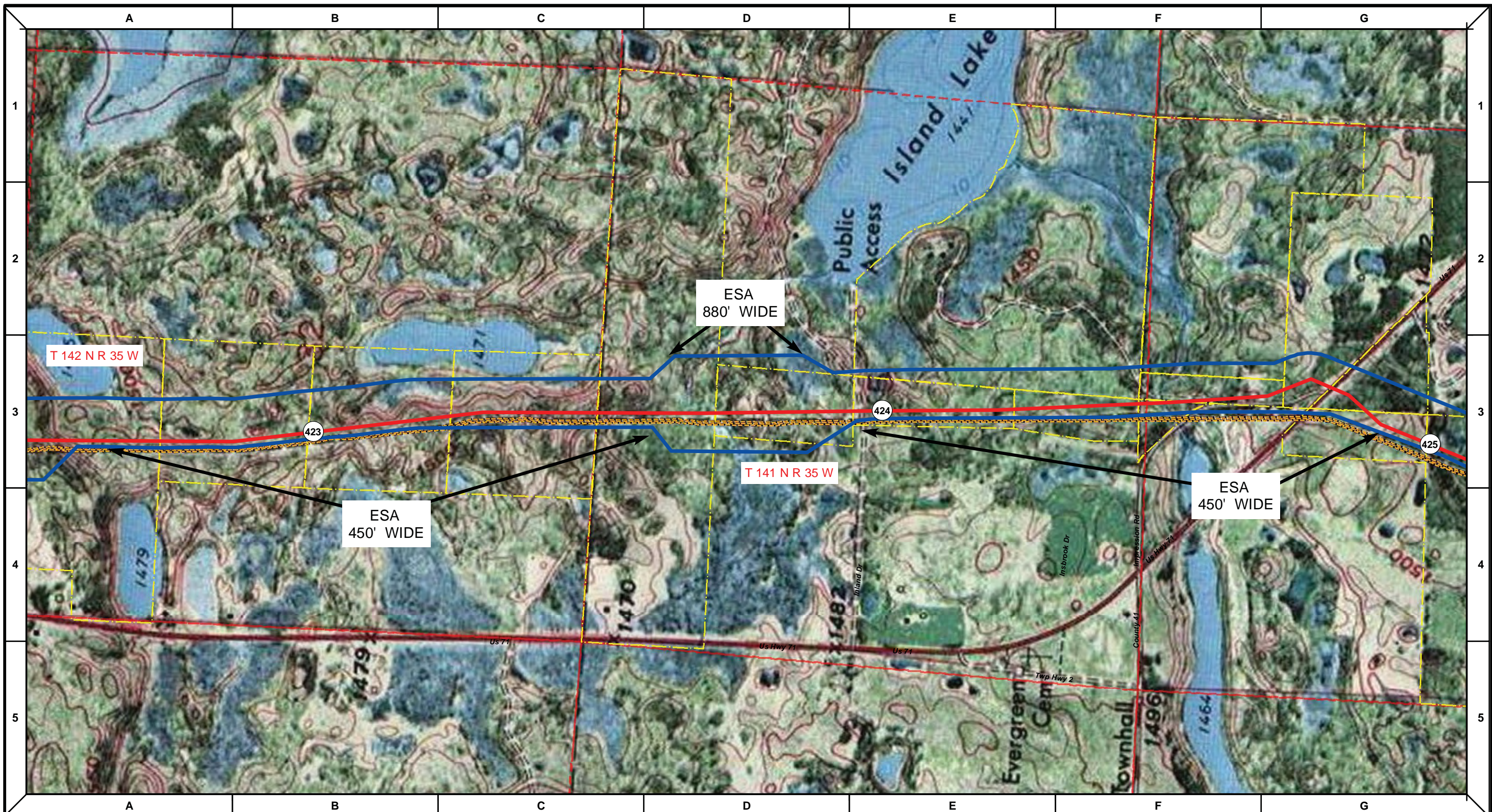
DRAWN	CHECKED	APPROVED	DATE	REV NO.	DESCRIPTION
			1/29/14	2	PUC Update - Revision D-2 Alignment
			12/19/13	1	PUC Update - Revision D Alignment
			10/10/13	0	PUC Submittal

NORTH DAKOTA PIPELINE COMPANY LLC

PROPOSED SANDPIPER PIPELINE PROJECT
 ROUTE MAP
 Hubbard County, MN

DRAWN: MLB	CHECKED: --
DATE: Jan 30, 2014	SCALE: AS SHOWN

Spread:6 Map: 53 of 123



Proposed Pipeline - Sandpiper	Milepost - Sandpiper	Tract Boundary
Existing Enbridge Pipelines	Potential Block Valve	Facility Boundary
Foreign Pipes	Environmental Survey Area (ESA)	Previously Sited Facility Boundary
Transmission Lines	Section Lines	
SPREAD BREAK		

500 250 0 500 1,000 Feet

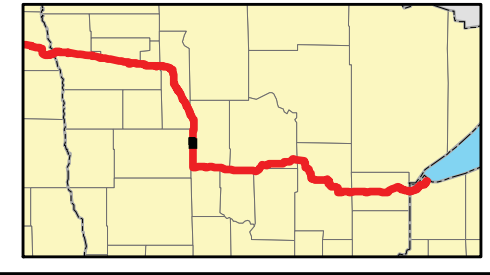
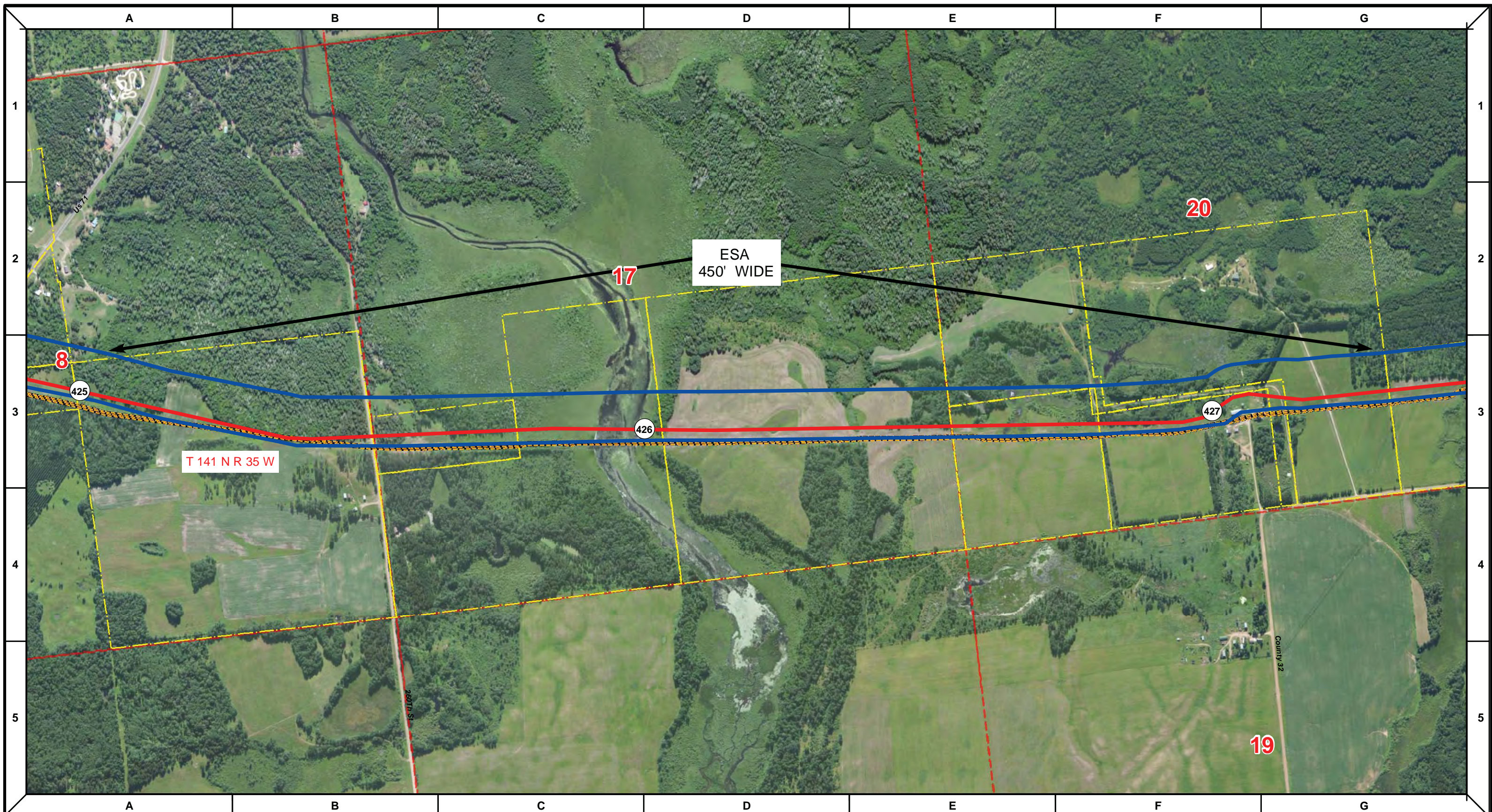
DRAWN	CHECKED	APPROVED	DATE	REV NO.	DESCRIPTION
			1/29/14	2	PUC Update - Revision D-2 Alignment
			12/19/13	1	PUC Update - Revision D Alignment
			10/10/13	0	PUC Submittal

ENBRIDGE
NORTH DAKOTA PIPELINE COMPANY LLC

**PROPOSED SANDPIPER PIPELINE PROJECT
ROUTE MAP
Hubbard County, MN**

DRAWN: MLB	CHECKED: --
DATE: Jan 30, 2014	SCALE: AS SHOWN

Spread:6 Map: 53 of 123



Proposed Pipeline - Sandpiper	Milepost - Sandpiper	Tract Boundary
Existing Enbridge Pipelines	Potential Block Valve	Facility Boundary
Foreign Pipes	Environmental Survey Area (ESA)	Previously Sited Facility Boundary
Transmission Lines	Section Lines	
SPREAD BREAK		

500 250 0 500 1,000 Feet

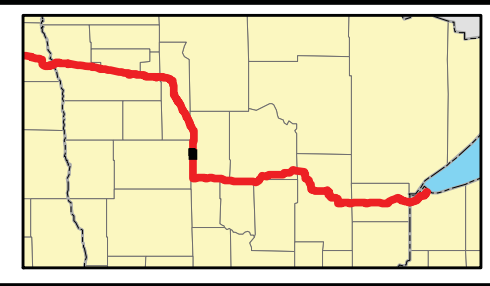
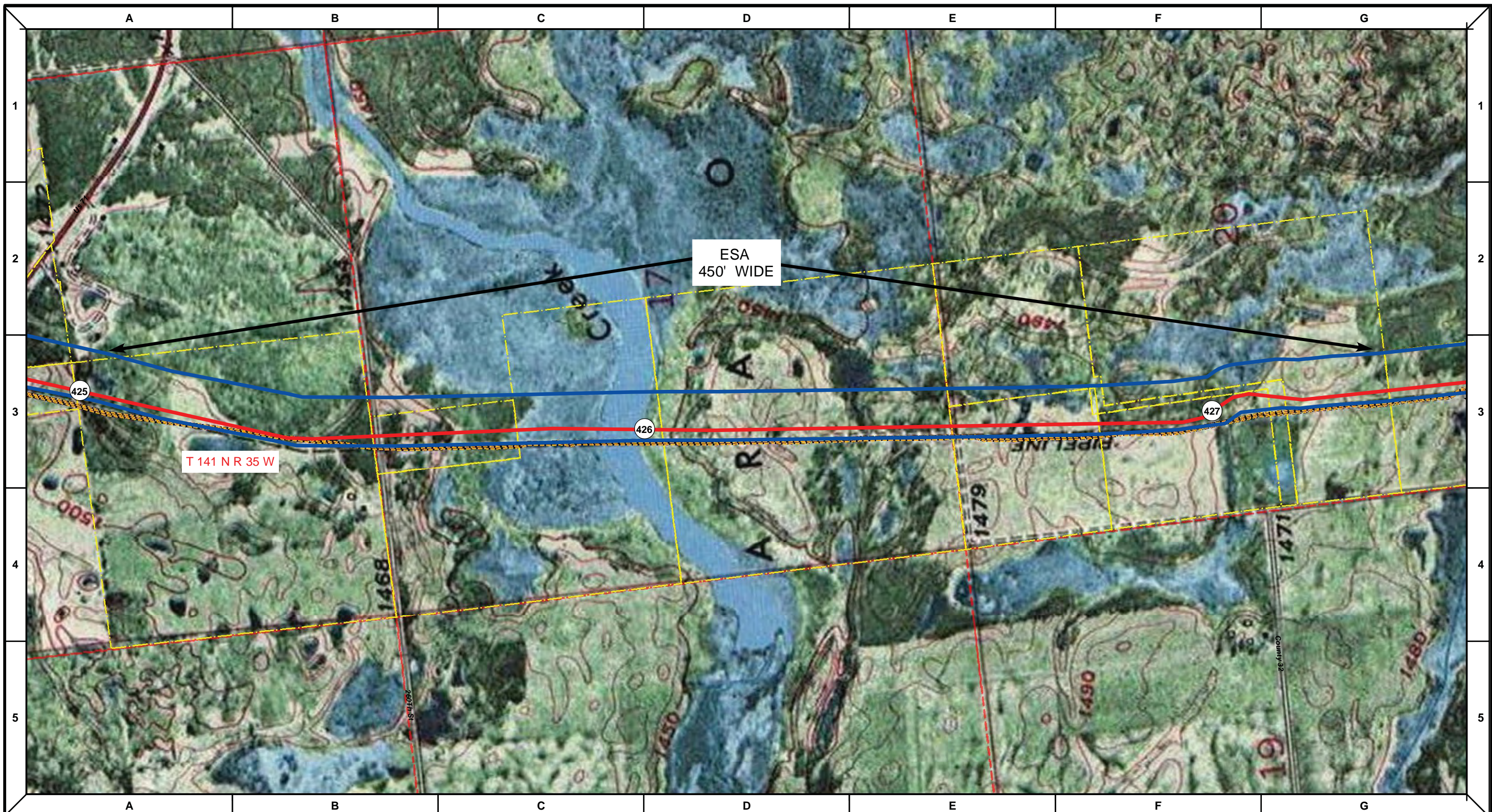
DRAWN	CHECKED	APPROVED	DATE	REV NO.	DESCRIPTION
			1/29/14	2	PUC Update - Revision D-2 Alignment
			12/19/13	1	PUC Update - Revision D Alignment
			10/10/13	0	PUC Submittal

NORTH DAKOTA PIPELINE COMPANY LLC

PROPOSED SANDPIPER PIPELINE PROJECT
ROUTE MAP
 Hubbard County, MN

DRAWN: MLB	CHECKED: --
DATE: Jan 30, 2014	SCALE: AS SHOWN

Spread:6 Map: 54 of 123



Proposed Pipeline - Sandpiper	Milepost - Sandpiper	Tract Boundary
Existing Enbridge Pipelines	Potential Block Valve	Facility Boundary
Foreign Pipes	Environmental Survey Area (ESA)	Previously Sited Facility Boundary
Transmission Lines		Section Lines
SPREAD BREAK		

500 250 0 500 1,000 Feet

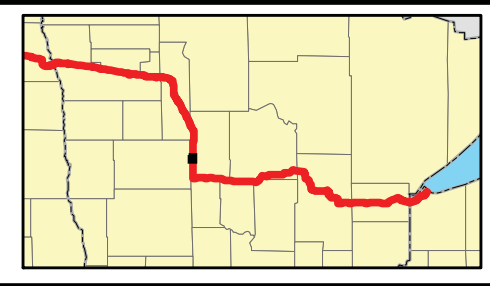
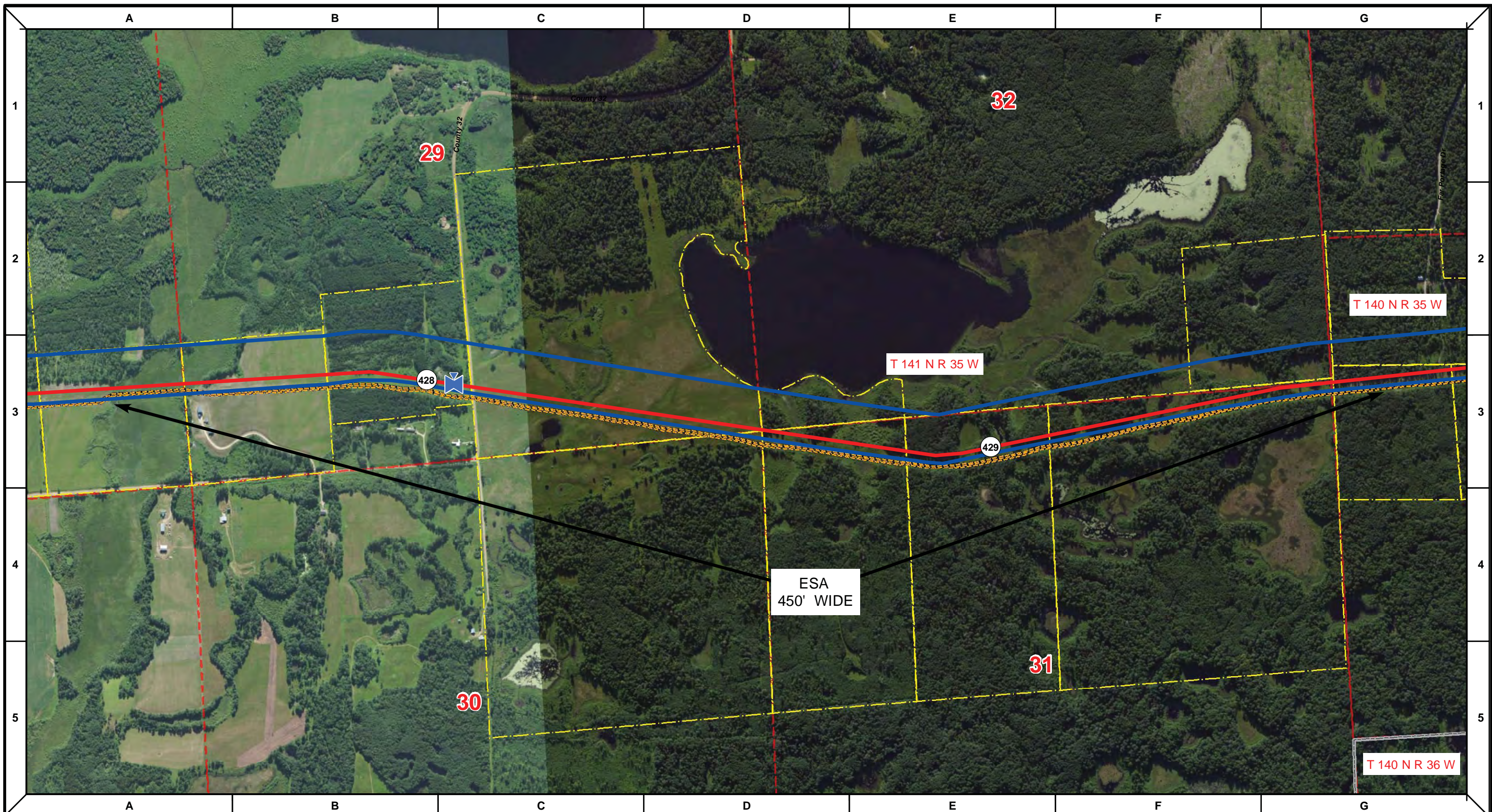
DRAWN	CHECKED	APPROVED	DATE	REV NO.	DESCRIPTION
			1/29/14	2	PUC Update - Revision D-2 Alignment
			12/19/13	1	PUC Update - Revision D Alignment
			10/10/13	0	PUC Submittal

NORTH DAKOTA PIPELINE COMPANY LLC

PROPOSED SANDPIPER PIPELINE PROJECT
 ROUTE MAP
 Hubbard County, MN

DRAWN: MLB	CHECKED: --
DATE: Jan 30, 2014	SCALE: AS SHOWN

Spread:6 Map: 54 of 123



Proposed Pipeline - Sandpiper	Milepost - Sandpiper	Tract Boundary
Existing Enbridge Pipelines	Potential Block Valve	Facility Boundary
Foreign Pipes	Environmental Survey Area (ESA)	Previously Sited Facility Boundary
Transmission Lines	Section Lines	
SPREAD BREAK		

500 250 0 500 1,000 Feet

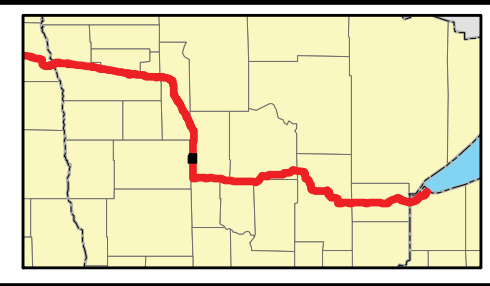
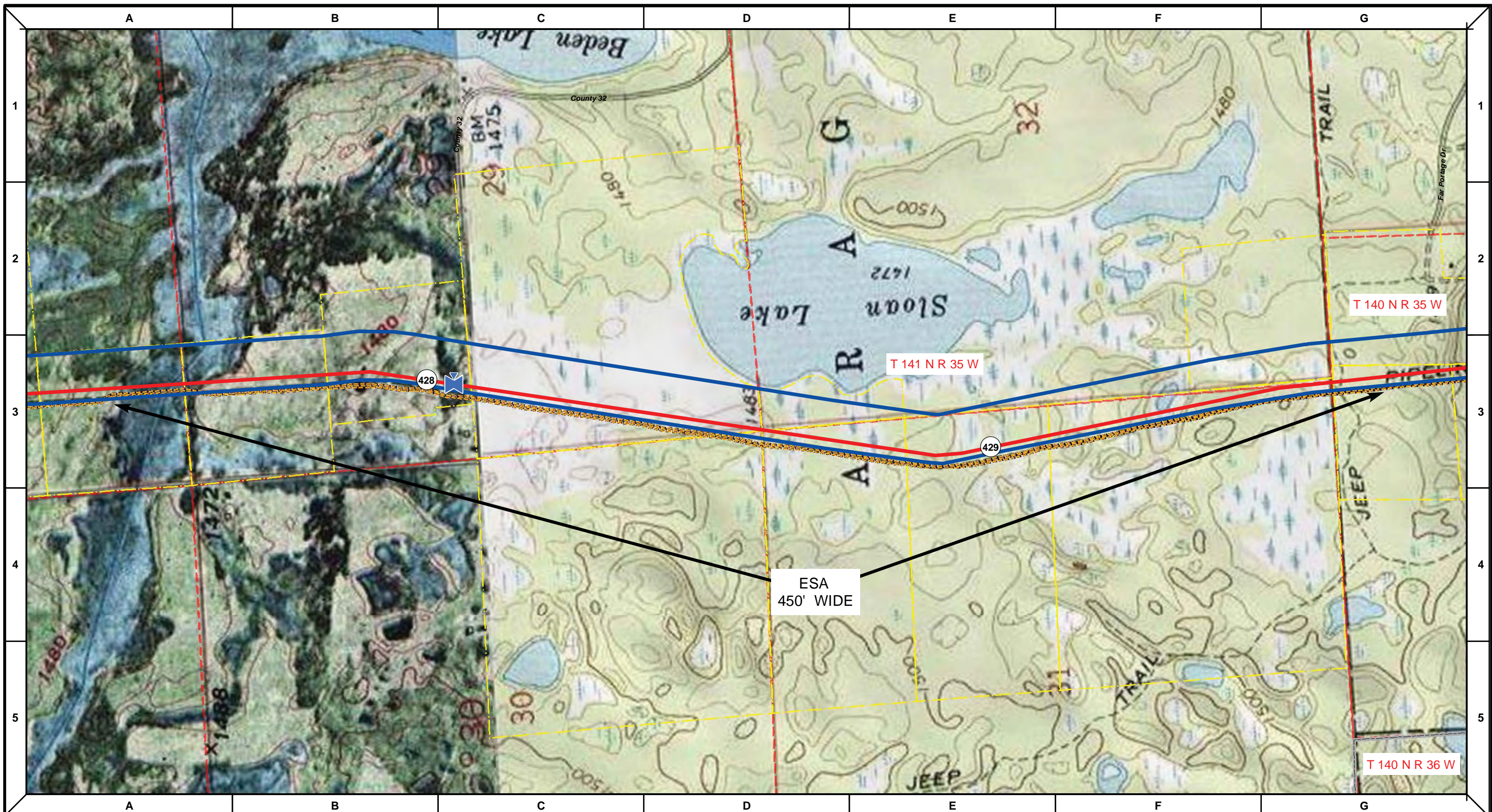
DRAWN	CHECKED	APPROVED	DATE	REV NO.	DESCRIPTION
			1/29/14	2	PUC Update - Revision D-2 Alignment
			12/19/13	1	PUC Update - Revision D Alignment
			10/10/13	0	PUC Submittal

ENBRIDGE
 NORTH DAKOTA PIPELINE COMPANY LLC

**PROPOSED SANDPIPER
 PIPELINE PROJECT
 ROUTE MAP
 Hubbard County, MN**

<small>DRAWN:</small> MLB	<small>CHECKED:</small> --
<small>DATE:</small> Jan 30, 2014	<small>SCALE:</small> AS SHOWN

Spread:6 Map: 55 of 123



Proposed Pipeline - Sandpiper	Milepost - Sandpiper	Tract Boundary
Existing Enbridge Pipelines	Potential Block Valve	Facility Boundary
Foreign Pipes	Environmental Survey Area (ESA)	Previously Sited Facility Boundary
Transmission Lines	Section Lines	
SPREAD BREAK		

500 250 0 500 1,000 Feet

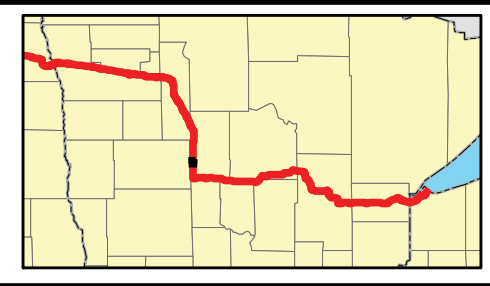
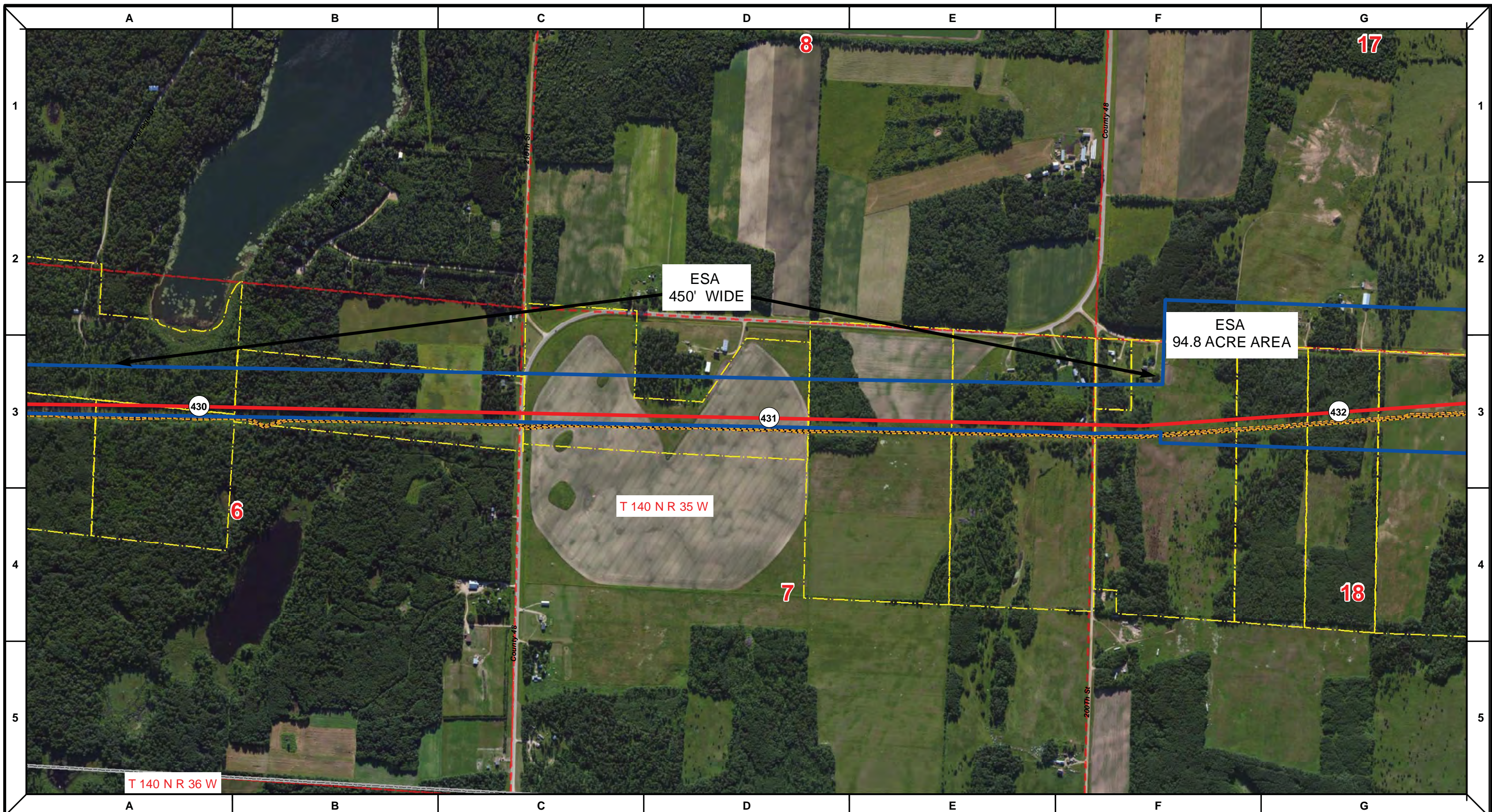
DRAWN	CHECKED	APPROVED	DATE	REV NO.	DESCRIPTION
MLB			1/29/14	2	PUC Update - Revision D-2 Alignment
MLB			12/19/13	1	PUC Update - Revision D Alignment
MLB			10/10/13	0	PUC Submittal

NORTH DAKOTA PIPELINE COMPANY LLC

PROPOSED SANDPIPER PIPELINE PROJECT
 ROUTE MAP
 Hubbard County, MN

DRAWN: MLB	CHECKED: --
DATE: Jan 30, 2014	SCALE: AS SHOWN

Spread:6 Map: 55 of 123



Proposed Pipeline - Sandpiper	Milepost - Sandpiper	Tract Boundary
Existing Enbridge Pipelines	Potential Block Valve	Facility Boundary
Foreign Pipes	Environmental Survey Area (ESA)	Previously Sited Facility Boundary
Transmission Lines	Section Lines	
SPREAD BREAK		

500 250 0 500 1,000 Feet

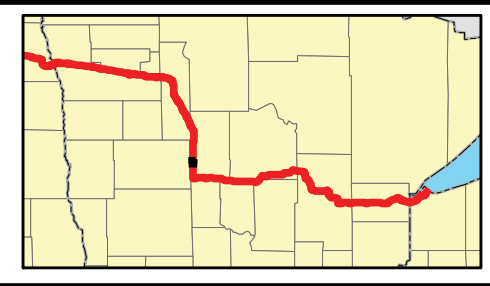
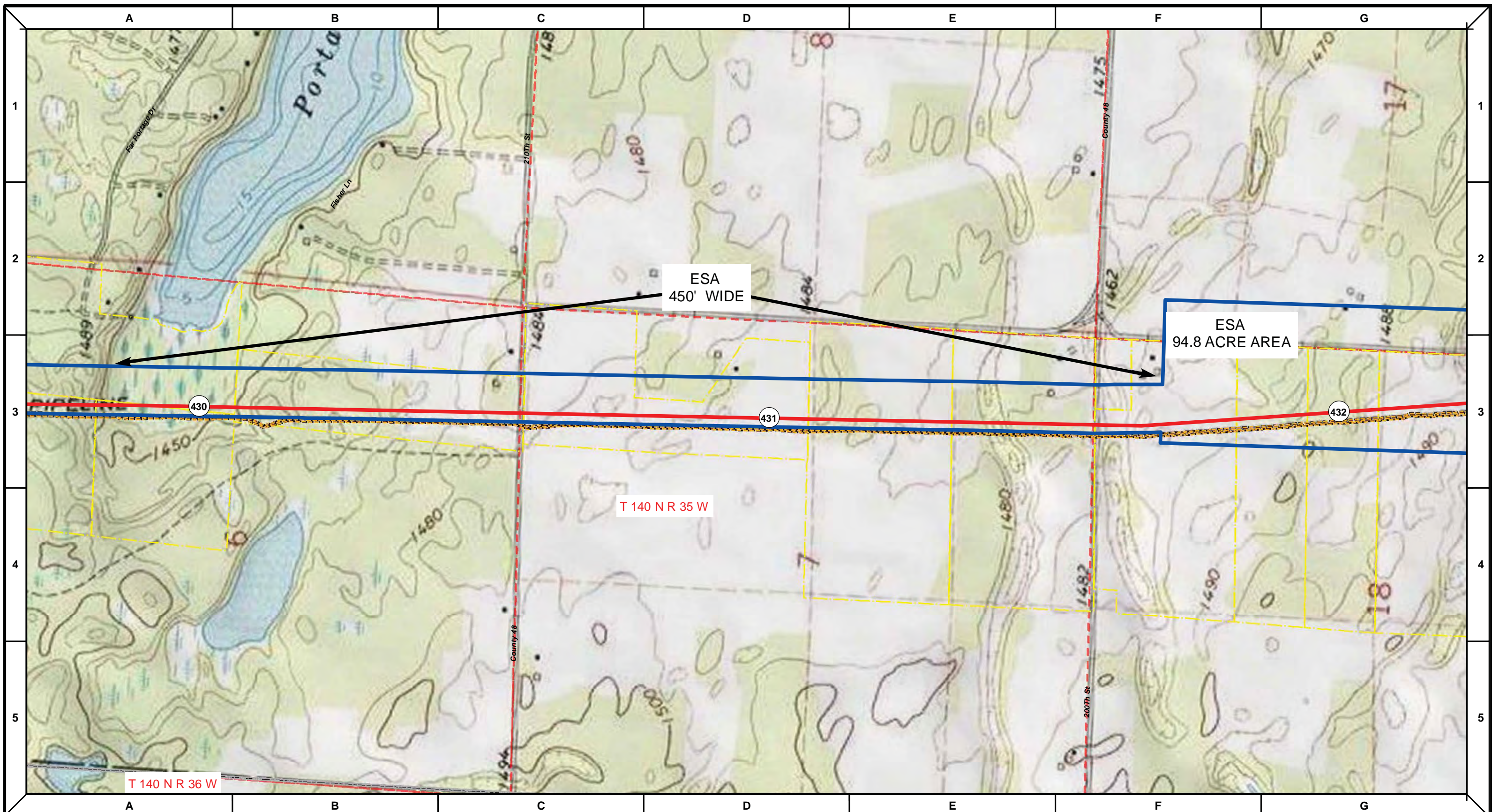
DRAWN	CHECKED	APPROVED	DATE	REV NO.	DESCRIPTION
			1/29/14	2	PUC Update - Revision D-2 Alignment
			12/19/13	1	PUC Update - Revision D Alignment
			10/10/13	0	PUC Submittal

NORTH DAKOTA PIPELINE COMPANY LLC

PROPOSED SANDPIPER PIPELINE PROJECT
 ROUTE MAP
 Hubbard County, MN

<small>DRAWN:</small> MLB	<small>CHECKED:</small> --
<small>DATE:</small> Jan 30, 2014	<small>SCALE:</small> AS SHOWN

Spread:6 Map: 56 of 123



Proposed Pipeline - Sandpiper	Milepost - Sandpiper	Tract Boundary
Existing Enbridge Pipelines	Potential Block Valve	Facility Boundary
Foreign Pipes	Environmental Survey Area (ESA)	Previously Sited Facility Boundary
Transmission Lines		Section Lines
SPREAD BREAK		

500 250 0 500 1,000 Feet

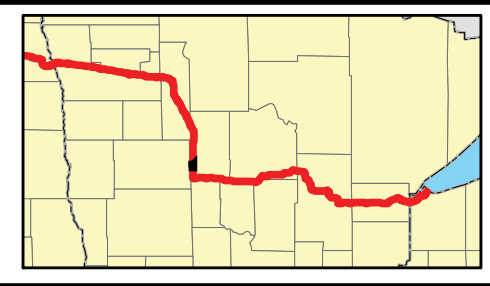
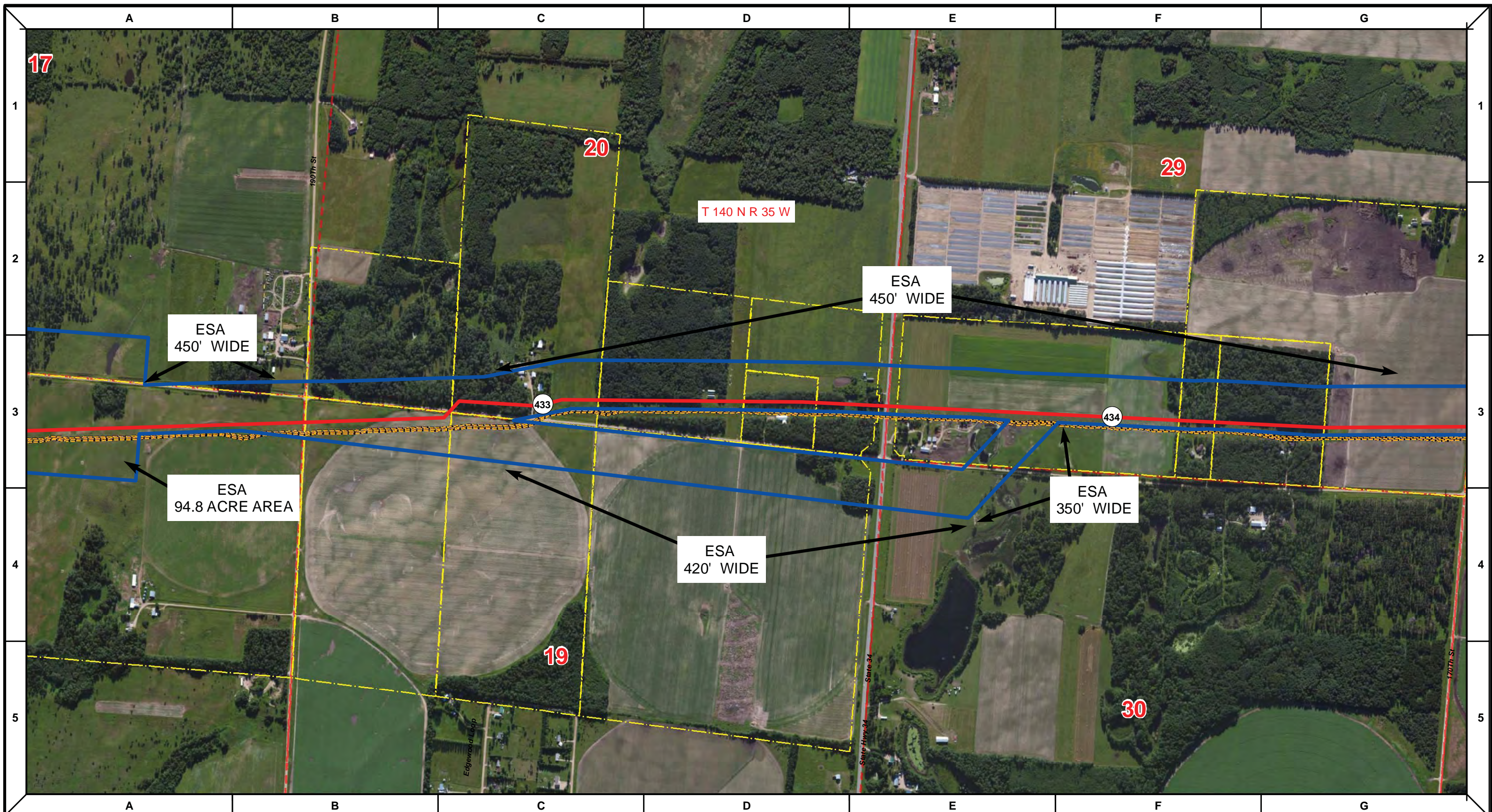
DRAWN	CHECKED	APPROVED	DATE	REV NO.	DESCRIPTION
			1/29/14	2	PUC Update - Revision D-2 Alignment
			12/19/13	1	PUC Update - Revision D Alignment
			10/10/13	0	PUC Submittal

ENBRIDGE
NORTH DAKOTA PIPELINE COMPANY LLC

**PROPOSED SANDPIPER
PIPELINE PROJECT
ROUTE MAP
Hubbard County, MN**

DRAWN: MLB	CHECKED: --
DATE: Jan 30, 2014	SCALE: AS SHOWN

Spread:6 Map: 56 of 123



Proposed Pipeline - Sandpiper	Milepost - Sandpiper	Tract Boundary
Existing Enbridge Pipelines	Potential Block Valve	Facility Boundary
Foreign Pipes	Environmental Survey Area (ESA)	Previously Sited Facility Boundary
Transmission Lines	Section Lines	
SPREAD BREAK		

500 250 0 500 1,000 Feet

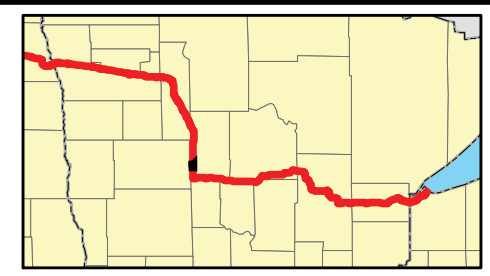
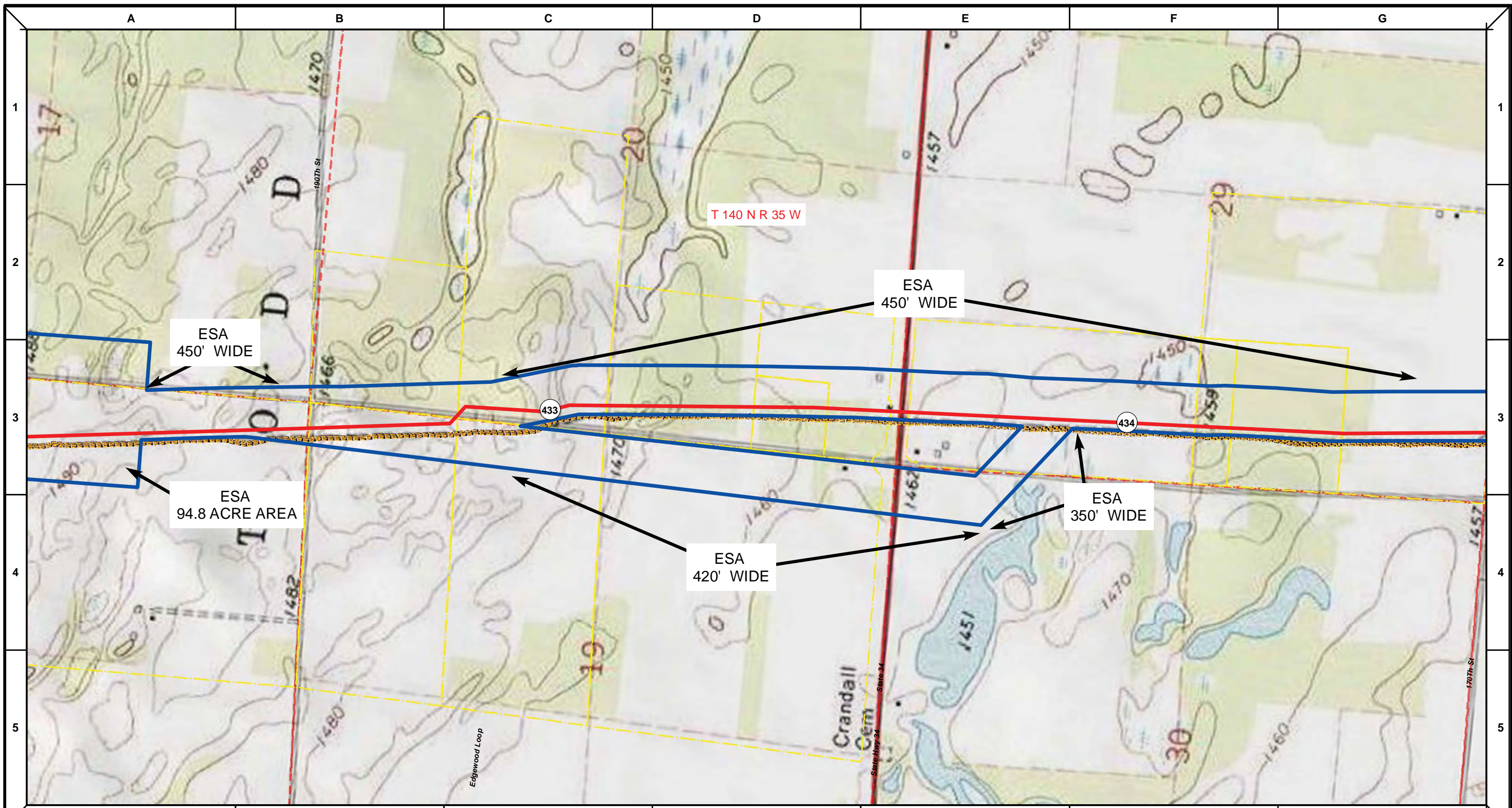
DRAWN	CHECKED	APPROVED	DATE	REV NO.	DESCRIPTION
			1/29/14	2	PUC Update - Revision D-2 Alignment
			12/19/13	1	PUC Update - Revision D Alignment
			10/10/13	0	PUC Submittal

ENBRIDGE
NORTH DAKOTA PIPELINE COMPANY LLC

PROPOSED SANDPIPER PIPELINE PROJECT
ROUTE MAP
Hubbard County, MN

DRAWN: MLB	CHECKED: --
DATE: Jan 30, 2014	SCALE: AS SHOWN

Spread:6 Map: 57 of 123



Proposed Pipeline - Sandpiper	Milepost - Sandpiper	Tract Boundary
Existing Enbridge Pipelines	Potential Block Valve	Facility Boundary
Foreign Pipes	Environmental Survey Area (ESA)	Previously Sited Facility Boundary
Transmission Lines		Section Lines
SPREAD BREAK		

500 250 0 500 1,000 Feet

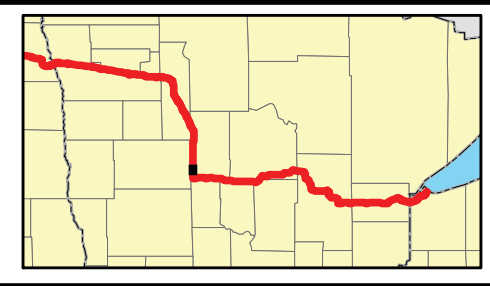
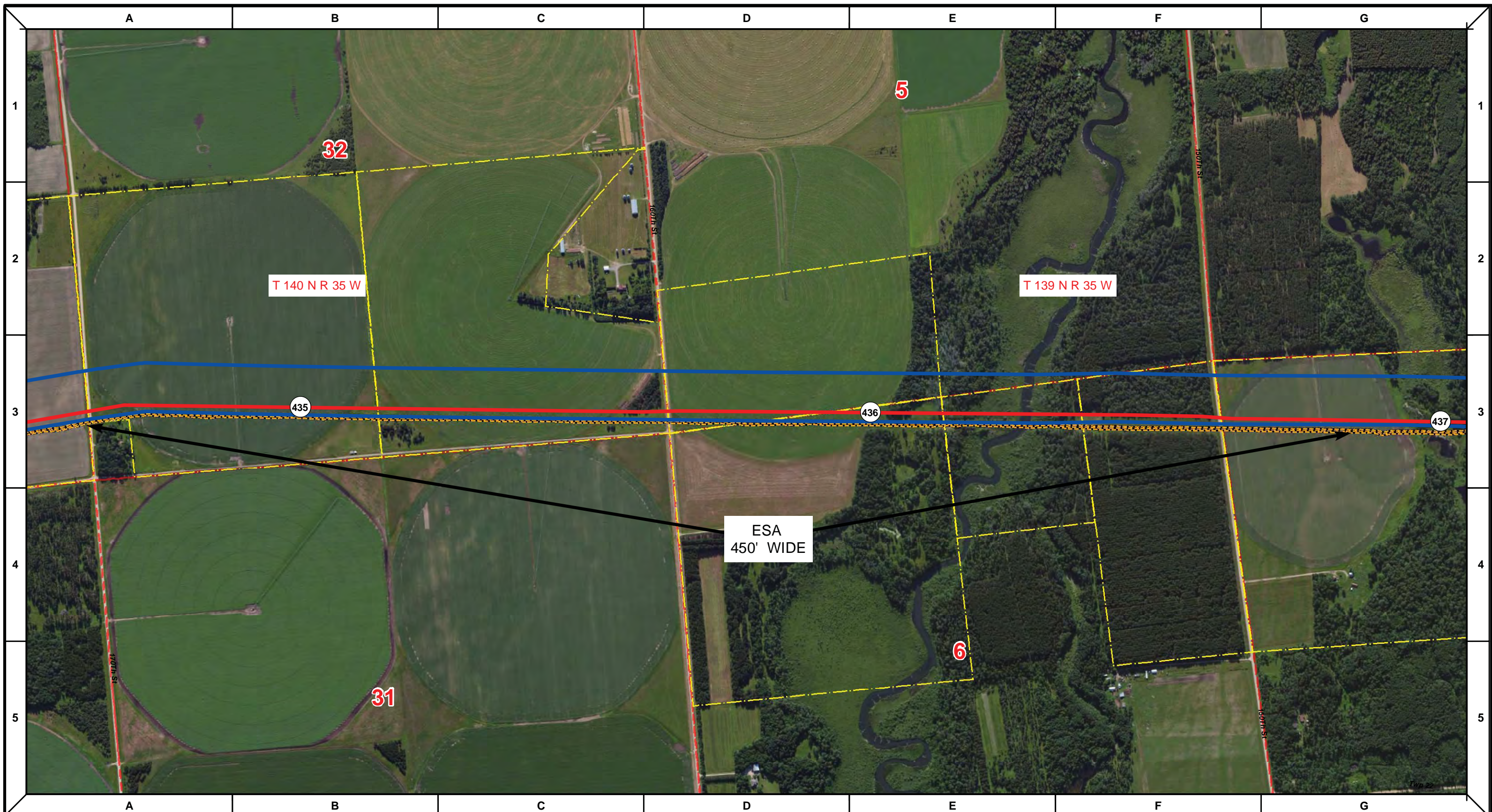
MLB	DATE	REV NO.	DESCRIPTION
	1/29/14	2	PUC Update - Revision D-2 Alignment
	12/19/13	1	PUC Update - Revision D Alignment
	10/10/13	0	PUC Submittal
DRAWN	CHECKED	APPROVED	DATE
			REV NO.

NORTH DAKOTA PIPELINE COMPANY LLC

PROPOSED SANDPIPER PIPELINE PROJECT
ROUTE MAP
 Hubbard County, MN

DRAWN: MLB	CHECKED: --
DATE: Jan 30, 2014	SCALE: AS SHOWN

Spread:6 Map: 57 of 123



Proposed Pipeline - Sandpiper	Milepost - Sandpiper	Tract Boundary
Existing Enbridge Pipelines	Potential Block Valve	Facility Boundary
Foreign Pipes	Environmental Survey Area (ESA)	Previously Sited Facility Boundary
Transmission Lines		Section Lines
SPREAD BREAK		

500 250 0 500 1,000 Feet

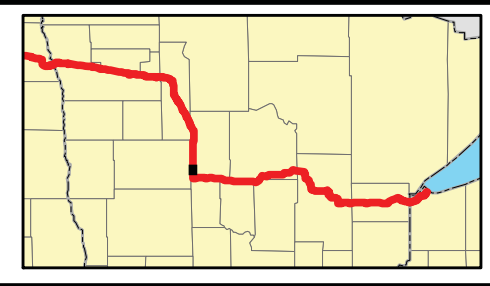
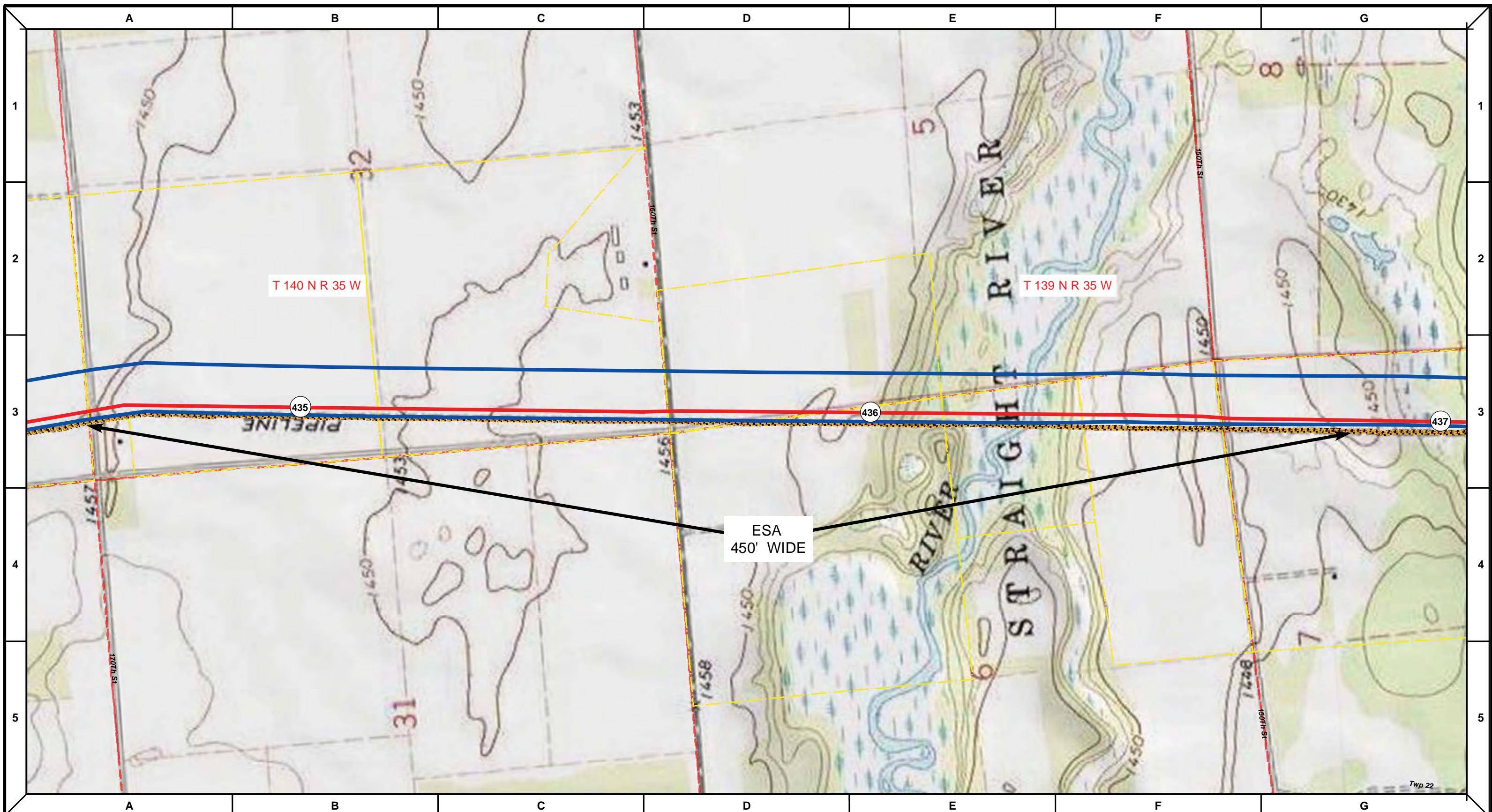
DRAWN	CHECKED	APPROVED	DATE	REV NO.	DESCRIPTION
			1/29/14	2	PUC Update - Revision D-2 Alignment
			12/19/13	1	PUC Update - Revision D Alignment
			10/10/13	0	PUC Submittal

NORTH DAKOTA PIPELINE COMPANY LLC

PROPOSED SANDPIPER PIPELINE PROJECT
 ROUTE MAP
 Hubbard County, MN

DRAWN: <u>MLB</u>	CHECKED: <u>--</u>
DATE: <u>Jan 30, 2014</u>	SCALE: <u>AS SHOWN</u>

Spread:6 Map: 58 of 123



Proposed Pipeline - Sandpiper	Milepost - Sandpiper	Tract Boundary
Existing Enbridge Pipelines	Potential Block Valve	Facility Boundary
Foreign Pipes	Environmental Survey Area (ESA)	Previously Sited Facility Boundary
Transmission Lines		Section Lines
SPREAD BREAK		

500 250 0 500 1,000 Feet

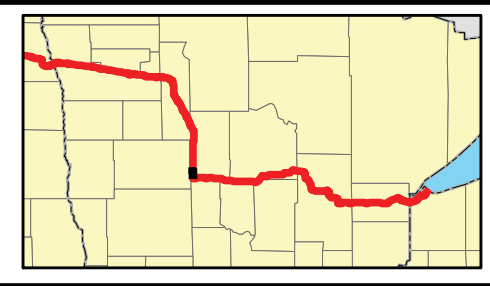
DRAWN	CHECKED	APPROVED	DATE	REV NO.	DESCRIPTION
			1/29/14	2	PUC Update - Revision D-2 Alignment
			12/19/13	1	PUC Update - Revision D Alignment
			10/10/13	0	PUC Submittal

NORTH DAKOTA PIPELINE COMPANY LLC

PROPOSED SANDPIPER PIPELINE PROJECT
 ROUTE MAP
 Hubbard County, MN

DRAWN: MLB	CHECKED: --
DATE: Jan 30, 2014	SCALE: AS SHOWN

Spread:6 Map: 58 of 123



Proposed Pipeline - Sandpiper	Milepost - Sandpiper	Tract Boundary
Existing Enbridge Pipelines	Potential Block Valve	Facility Boundary
Foreign Pipes	Environmental Survey Area (ESA)	Previously Sited Facility Boundary
Transmission Lines	Section Lines	
SPREAD BREAK		

500 250 0 500 1,000 Feet

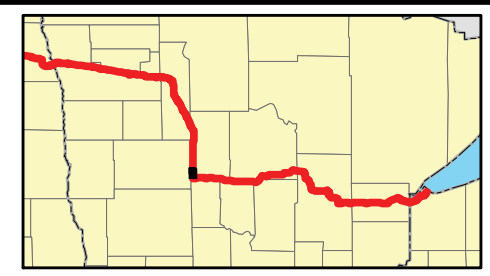
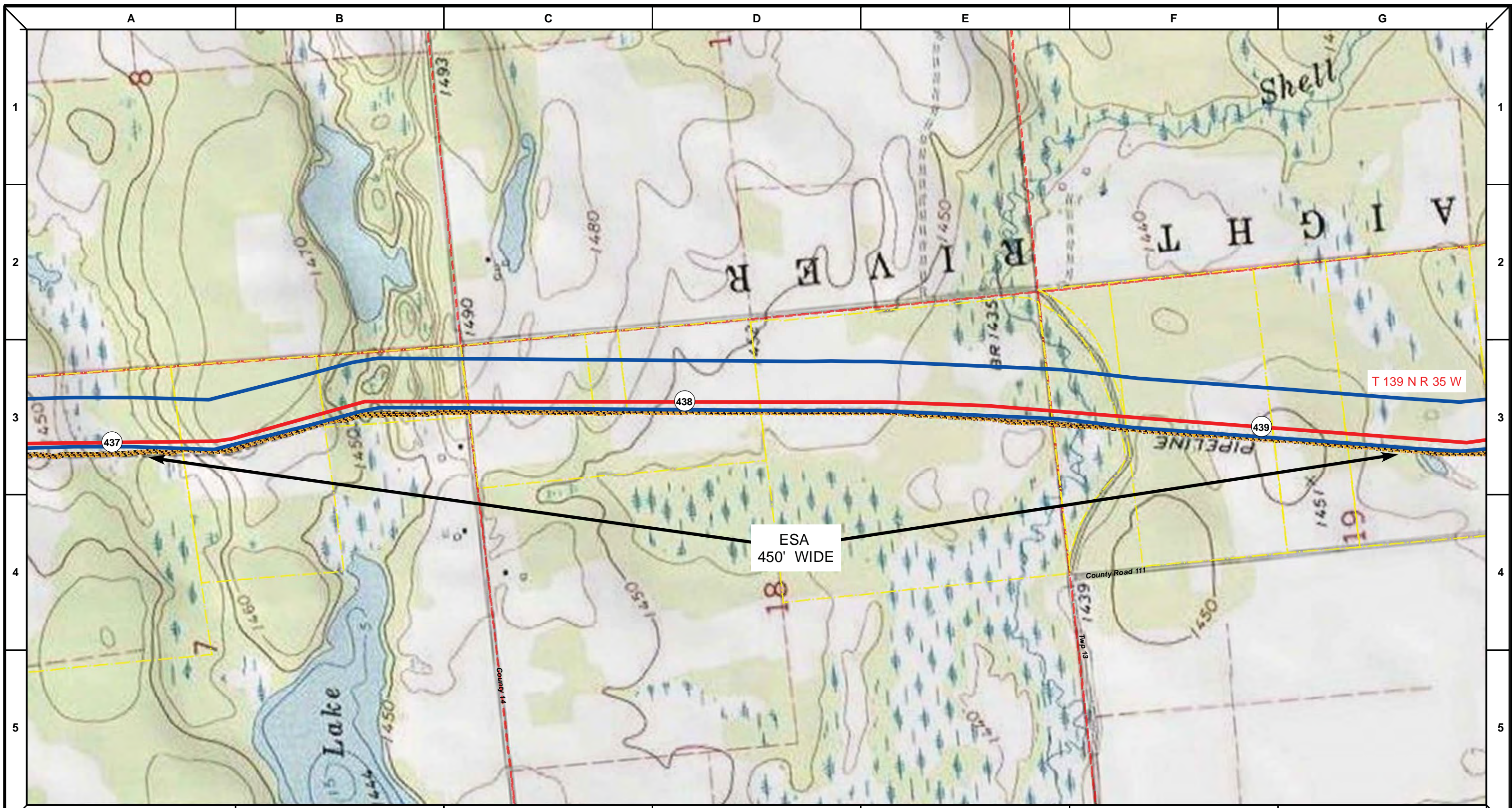
DRAWN	CHECKED	APPROVED	DATE	REV NO.	DESCRIPTION
			1/29/14	2	PUC Update - Revision D-2 Alignment
			12/19/13	1	PUC Update - Revision D Alignment
			10/10/13	0	PUC Submittal

NORTH DAKOTA PIPELINE COMPANY LLC

PROPOSED SANDPIPER PIPELINE PROJECT
 ROUTE MAP
 Hubbard County, MN

DRAWN: MLB	CHECKED: --
DATE: Jan 30, 2014	SCALE: AS SHOWN

Spread:6 Map: 59 of 123



Proposed Pipeline - Sandpiper	Milepost - Sandpiper	Tract Boundary
Existing Enbridge Pipelines	Potential Block Valve	Facility Boundary
Foreign Pipes	Environmental Survey Area (ESA)	Previously Sited Facility Boundary
Transmission Lines		Section Lines
SPREAD BREAK		

500 250 0 500 1,000 Feet

DRAWN	CHECKED	APPROVED	DATE	REV NO.	DESCRIPTION
			1/29/14	2	PUC Update - Revision D-2 Alignment
			12/19/13	1	PUC Update - Revision D Alignment
			10/10/13	0	PUC Submittal

NORTH DAKOTA PIPELINE COMPANY LLC

PROPOSED SANDPIPER PIPELINE PROJECT
 ROUTE MAP
 Hubbard County, MN

DRAWN: MLB	CHECKED: --
DATE: Jan 30, 2014	SCALE: AS SHOWN

Spread:6 Map: 59 of 123