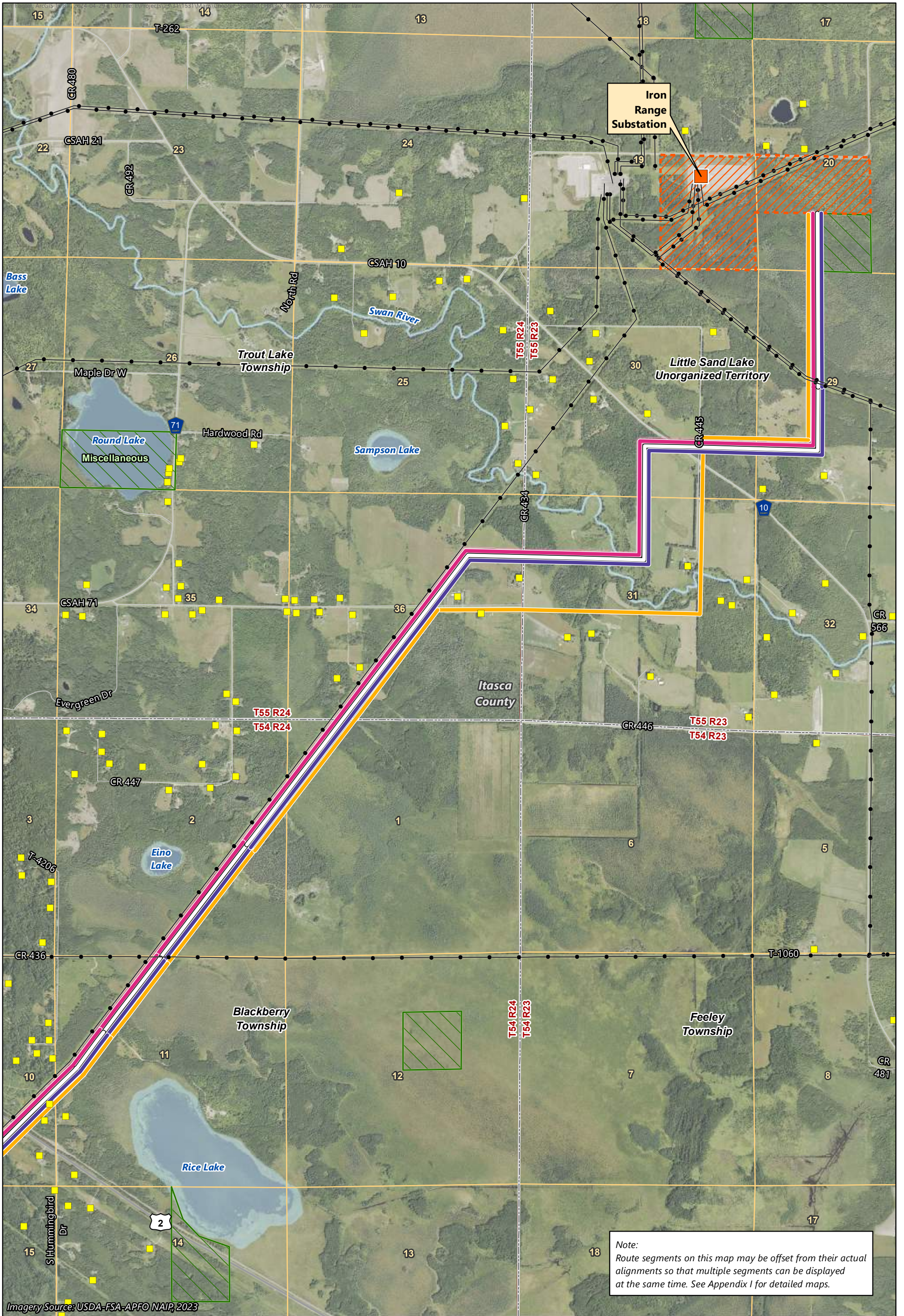

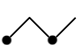










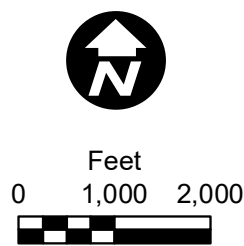


Map Book 7A
Example Full Routes

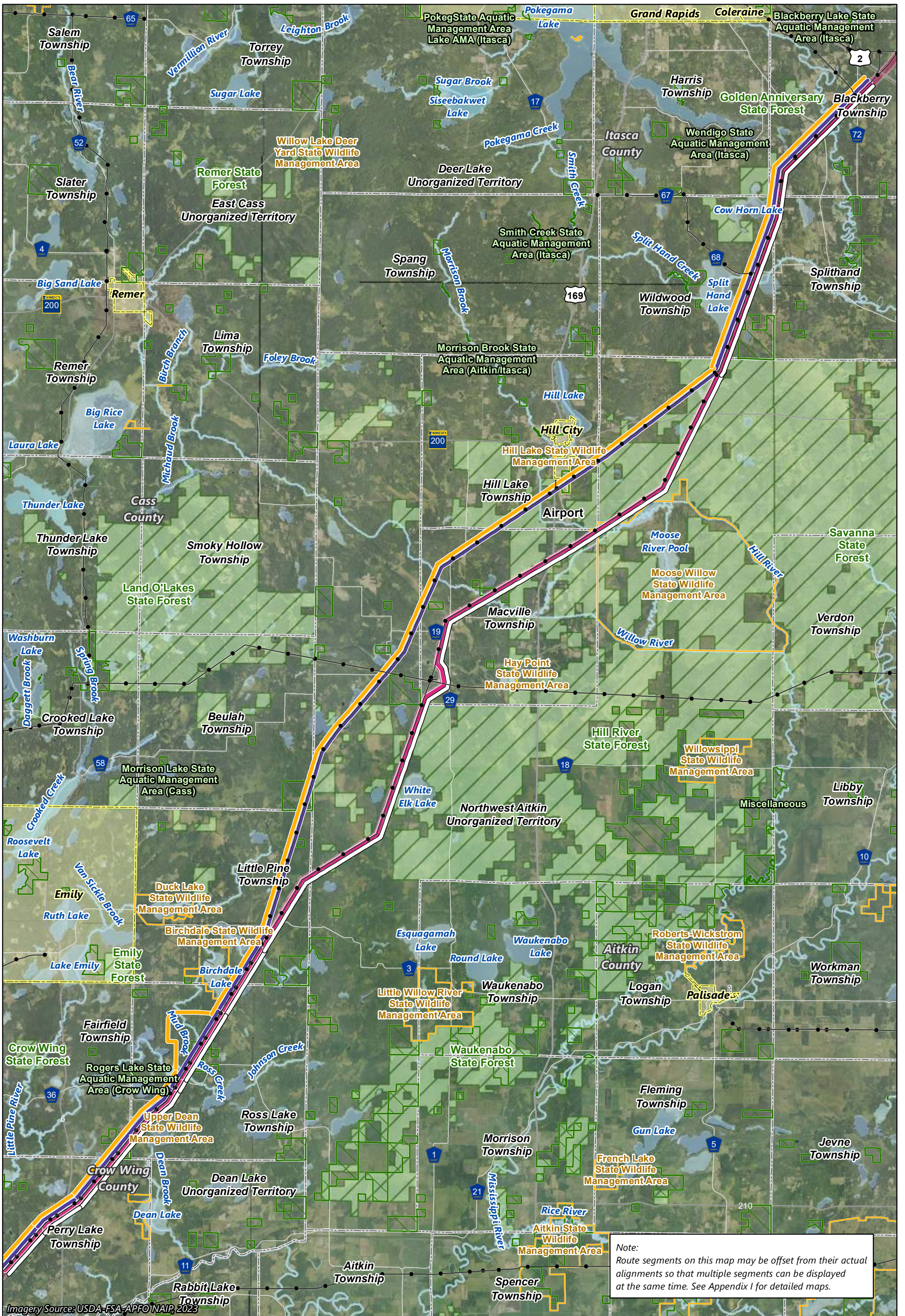


Imagery Source: USDA-FSA-APFO NAIP, 2023

-  Applicants' Proposed Route
-  Existing Transmission Line
-  PWI Basin
-  Applicants' Proposed Route with Modifications
-  Iron Range Substation
-  Substation Siting Area
-  Residence
-  PWI Waterway
-  Example Route 1
-  Example Route 2



Map 7A-1
EXAMPLE ROUTES MAP
 Iron Range Substation Region
 Northland Reliability Project



Note:
Route segments on this map may be offset from their actual alignments so that multiple segments can be displayed at the same time. See Appendix I for detailed maps.

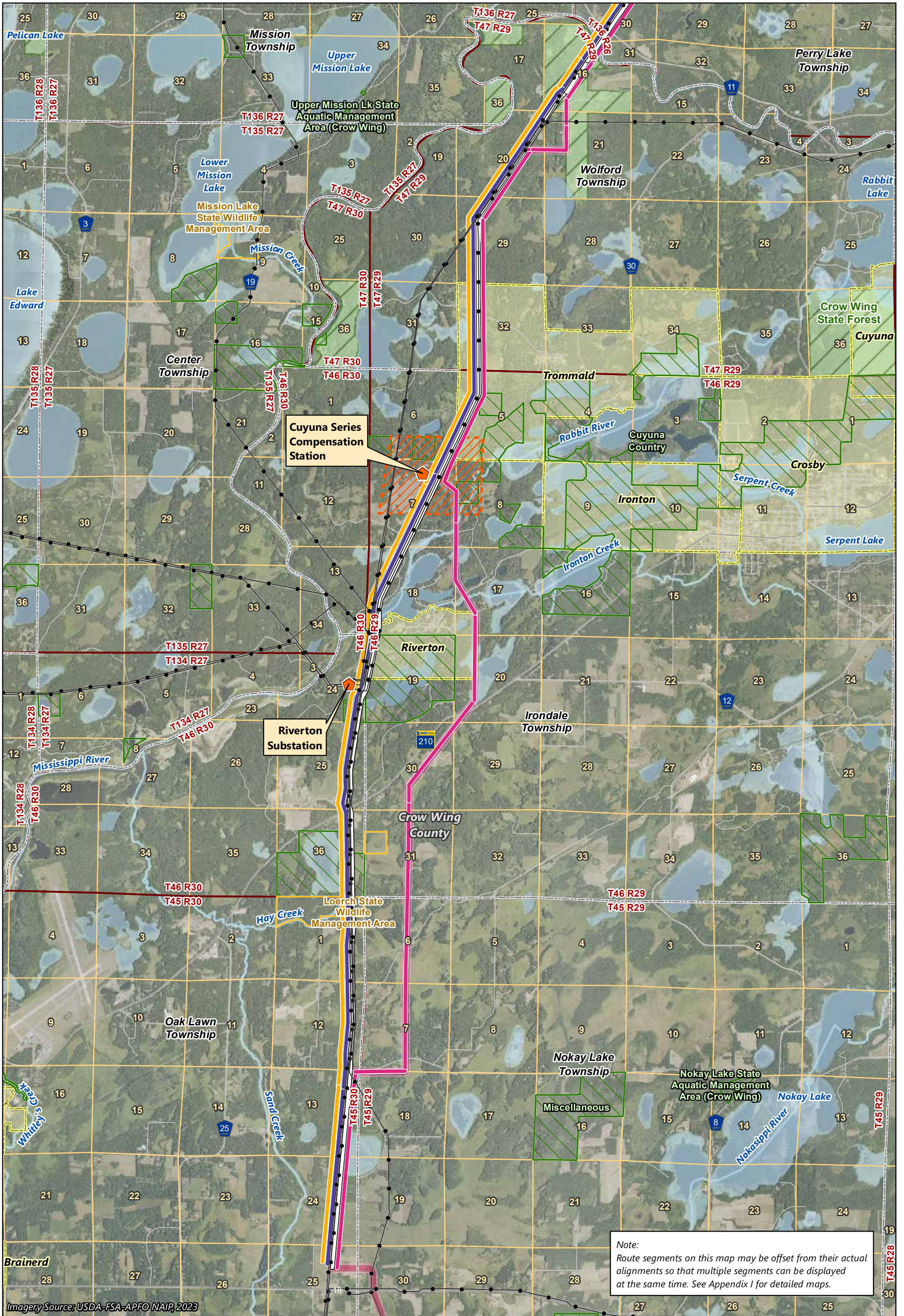
- Applicants' Proposed Route
- Applicants' Proposed Route with Modifications
- Example Route 1
- Example Route 2
- Existing Transmission Line
- PWI Waterway
- PWI Basin
- State Forest
- Municipal Boundary



Map 7A-2

EXAMPLE ROUTES MAP
Hill City to Little Pine Region
Northland Reliability Project

Imagery Source: USDA-FSA-APFO NAIP, 2023



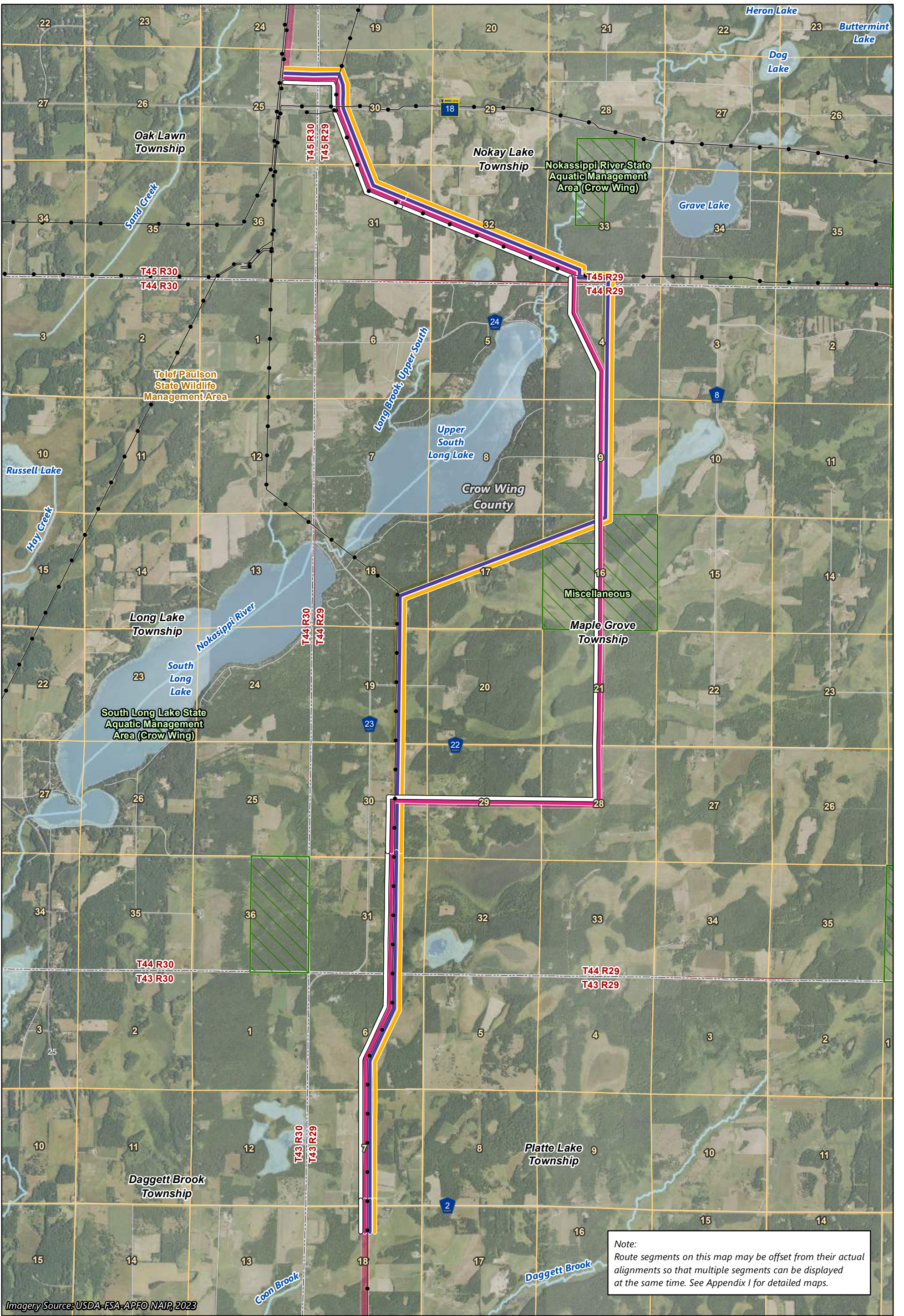
Imagery Source: USDA-FSA-APFO NAIP, 2023

- Applicants' Proposed Route
- Example Route 2
- Applicants' Proposed Route with Modifications
- Existing Transmission Line
- Example Route 1
- Cuyuna Series Compensation Station
- Riverton Substation
- Substation Siting Area
- PWI Waterway
- PWI Basin
- State Forest
- Municipal Boundary


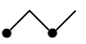







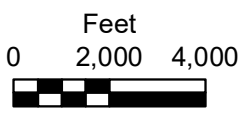
Map 7A-3

EXAMPLE ROUTES MAP
 Cole Lake/Riverton Region
 Northland Reliability Project

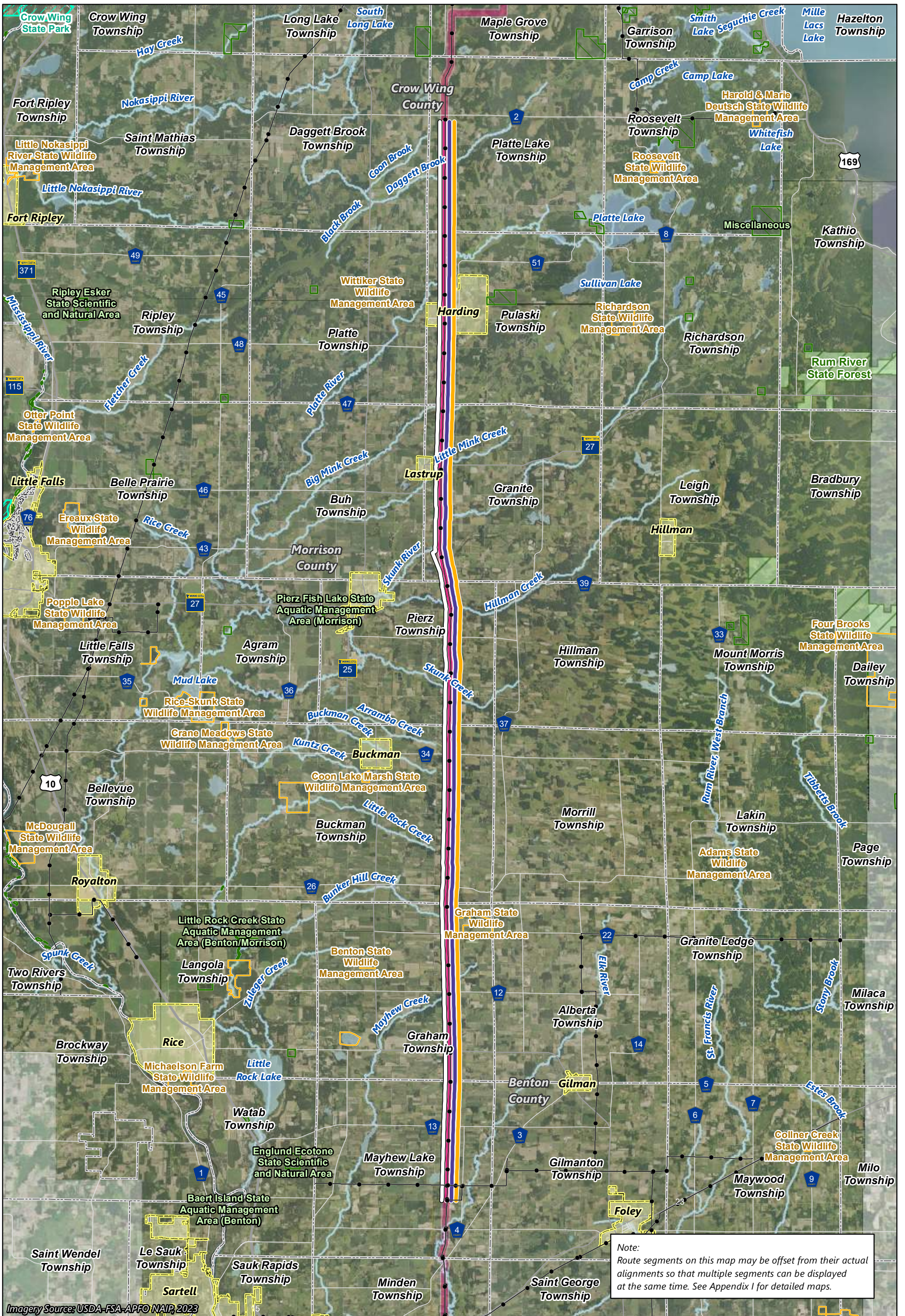


Imagery Source: USDA-FSA-APFO NAIP, 2023

-  Applicants' Proposed Route
-  Existing Transmission Line
-  Applicants' Proposed Route with Modifications
-  PWI Waterway
-  PWI Basin
-  Example Route 1
-  Example Route 2



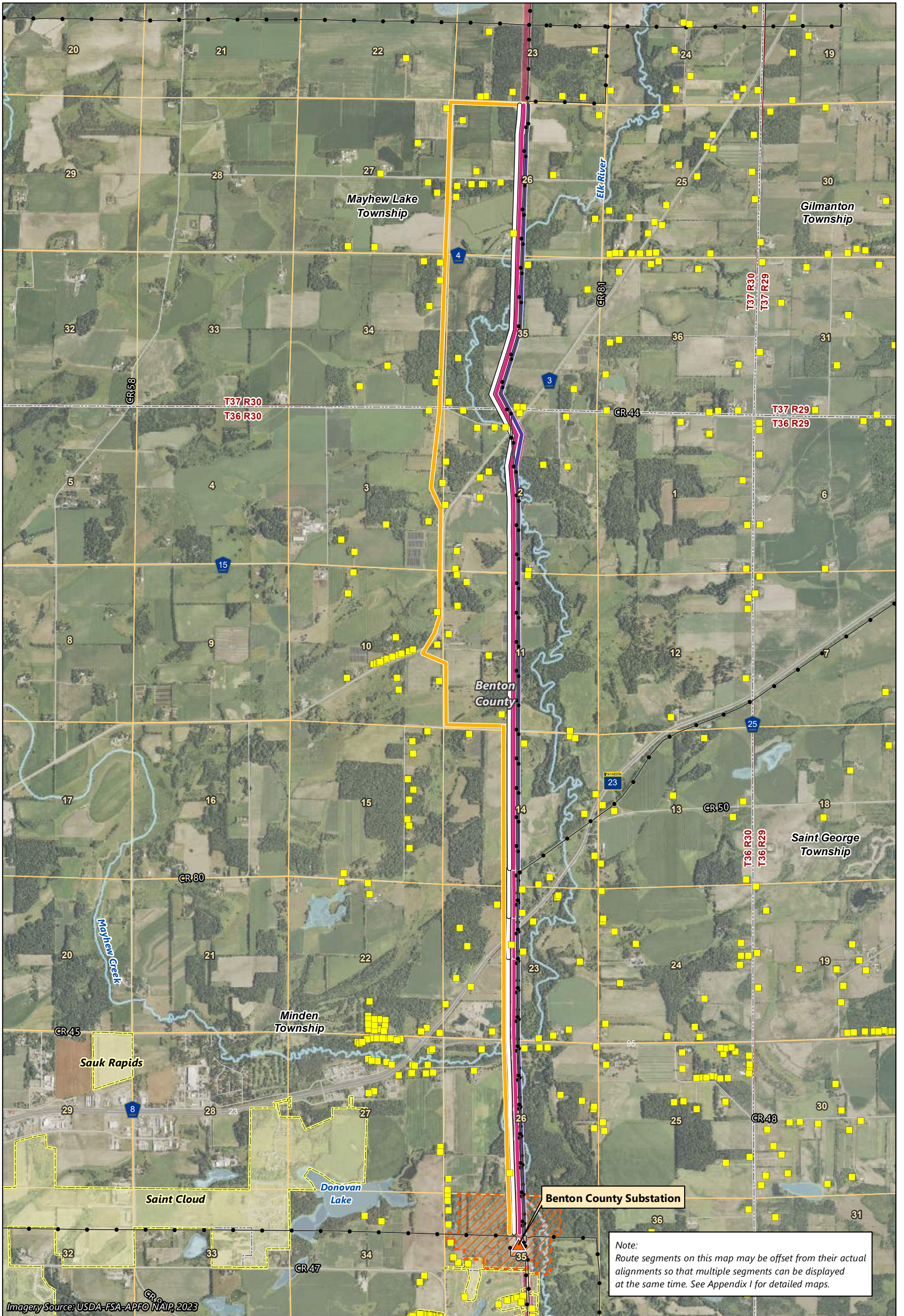
Map 7A-4
EXAMPLE ROUTES MAP
 Long Lake Region
 Northland Reliability Project



- Applicants' Proposed Route
- Applicants' Proposed Route with Modifications
- Existing Transmission Line
- PWI Waterway
- PWI Basin
- State Forest
- Municipal Boundary
- Example Route 1
- Example Route 2



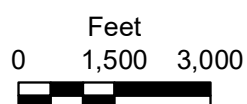
Map 7A-5
EXAMPLE ROUTES MAP
 Morrison County Region
 Northland Reliability Project



Note:
Route segments on this map may be offset from their actual alignments so that multiple segments can be displayed at the same time. See Appendix I for detailed maps.

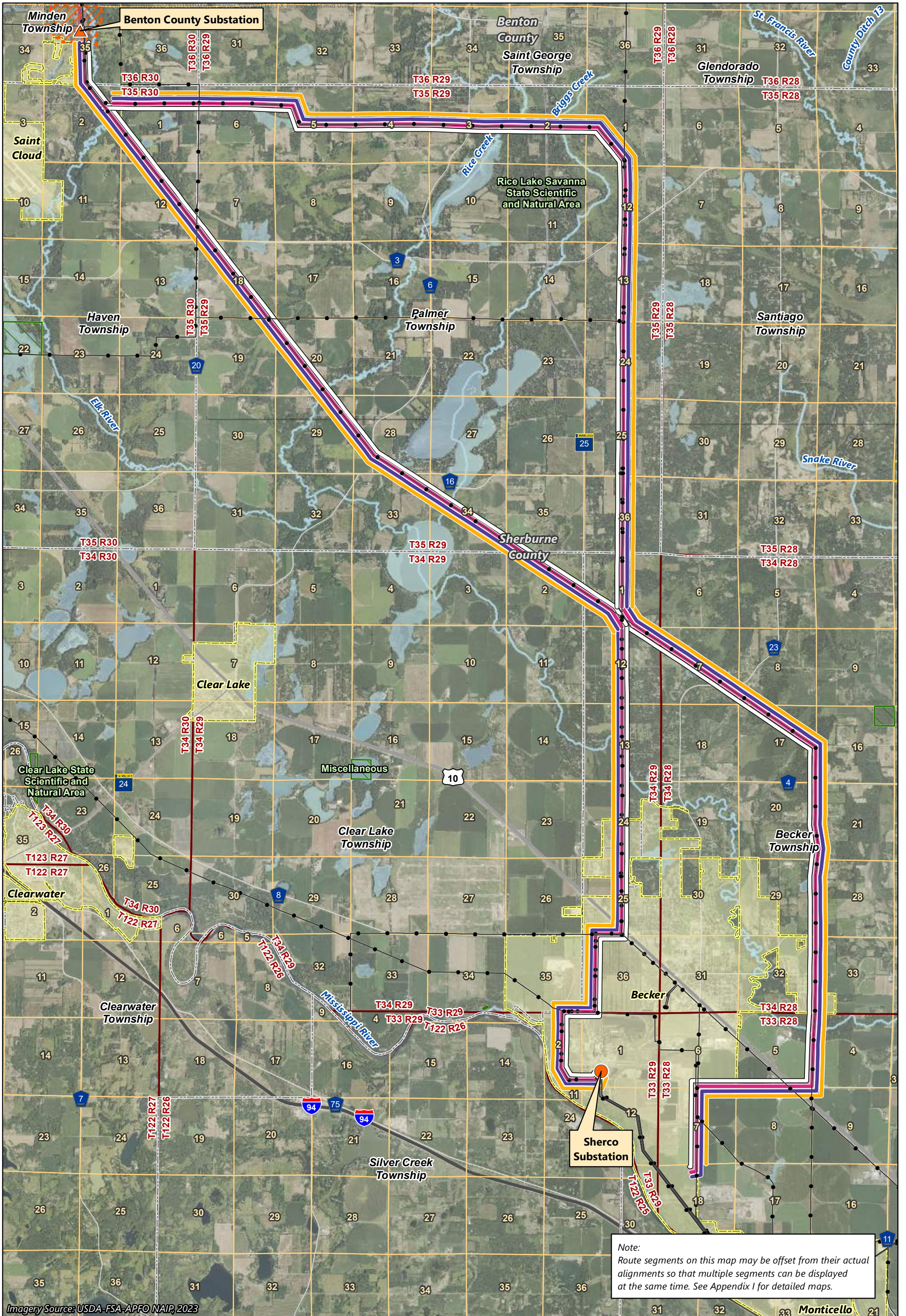
Imagery Source: USDA-FSA-APFO NAIP, 2023

- Applicants' Proposed Route
- Applicants' Proposed Route with Modifications
- Example Route 1
- Example Route 2
- Existing Transmission Line
- Benton County Substation
- Substation Siting Area
- Residence
- PWI Waterway
- PWI Basin
- Municipal Boundary














Map 7A-6

EXAMPLE ROUTES MAP
Benton County Elk River Region
Northland Reliability Project




Imagery Source: USDA-FSA-APFO NAIP, 2023

-  Applicants' Proposed Route
-  Existing Transmission Line
-  PWI Basin
-  Applicants' Proposed Route with Modifications
-  Benton County Substation
-  Municipal Boundary
-  Example Route 1
-  Sherco Substation
-  Substation Siting Area
-  PWI Waterway
-  Example Route 2



Feet
0 3,000 6,000



Map 7A-7

EXAMPLE ROUTES MAP
 Sherburne County Region
 Northland Reliability Project