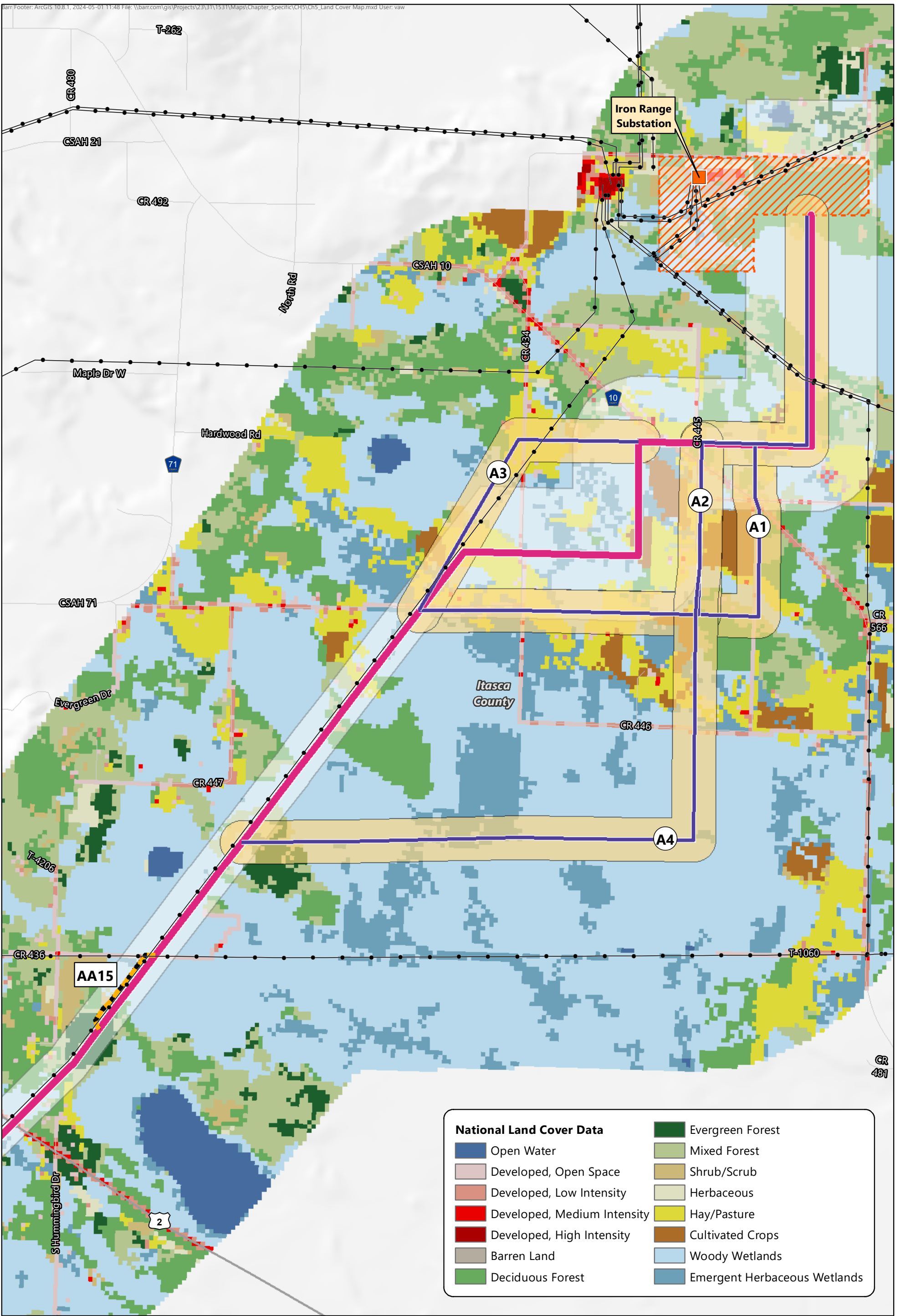




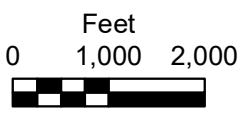
Map Book 5C

Land Cover

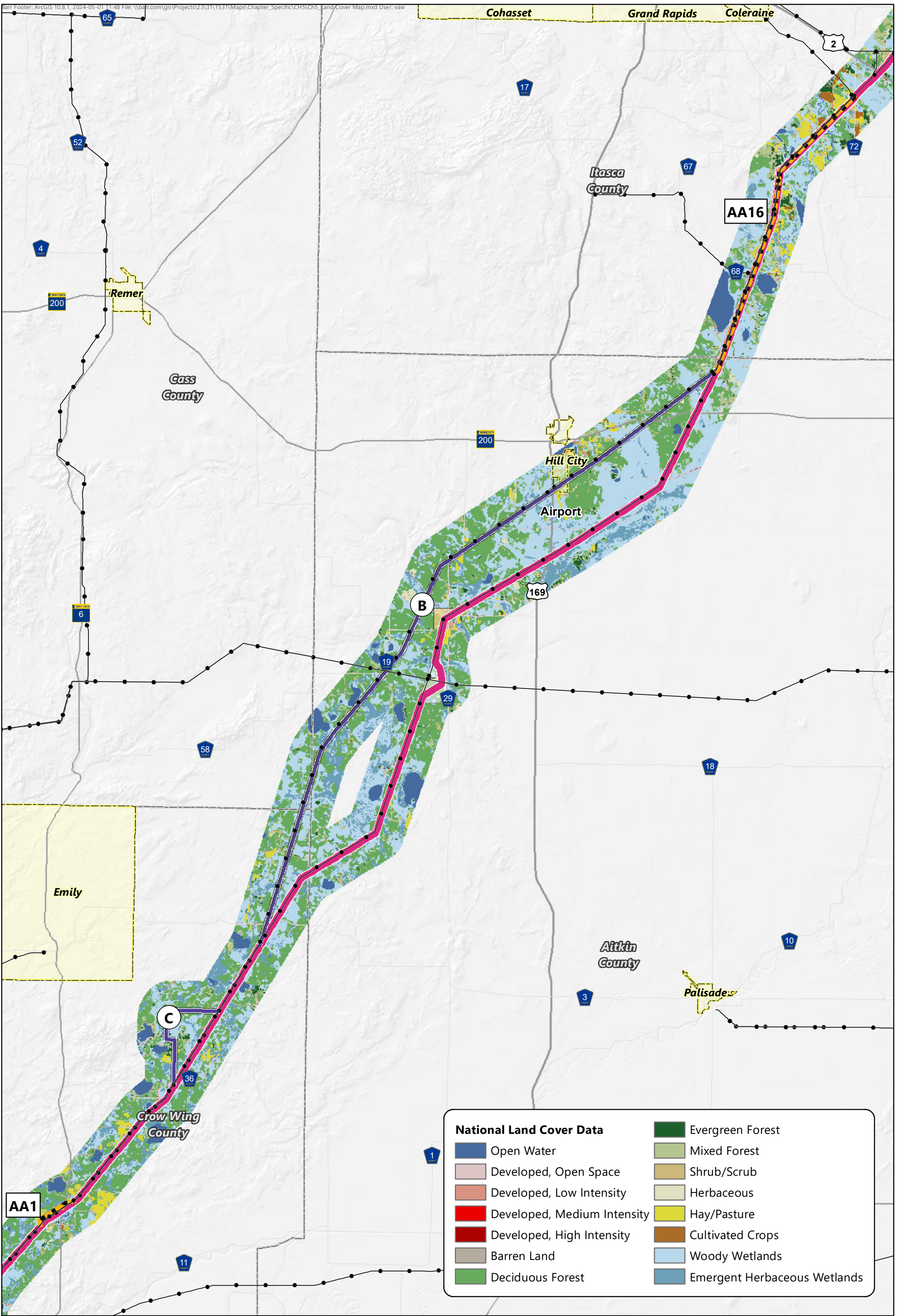







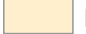

National Land Cover Data			
	Open Water		Evergreen Forest
	Developed, Open Space		Mixed Forest
	Developed, Low Intensity		Shrub/Scrub
	Developed, Medium Intensity		Herbaceous
	Developed, High Intensity		Hay/Pasture
	Barren Land		Cultivated Crops
	Deciduous Forest		Woody Wetlands
			Emergent Herbaceous Wetlands



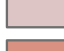












- Applicants' Proposed Route
- Existing Transmission Line
- Route Width
- Route Alternative
- Alignment Alternative
- Route Alternative Width
- Iron Range Substation
- Substation Siting Area

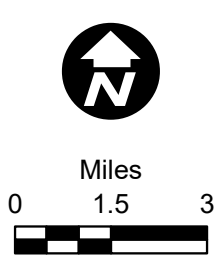


Map 5C-1
LAND COVER MAP
 Iron Range Substation Region
 Northland Reliability Project

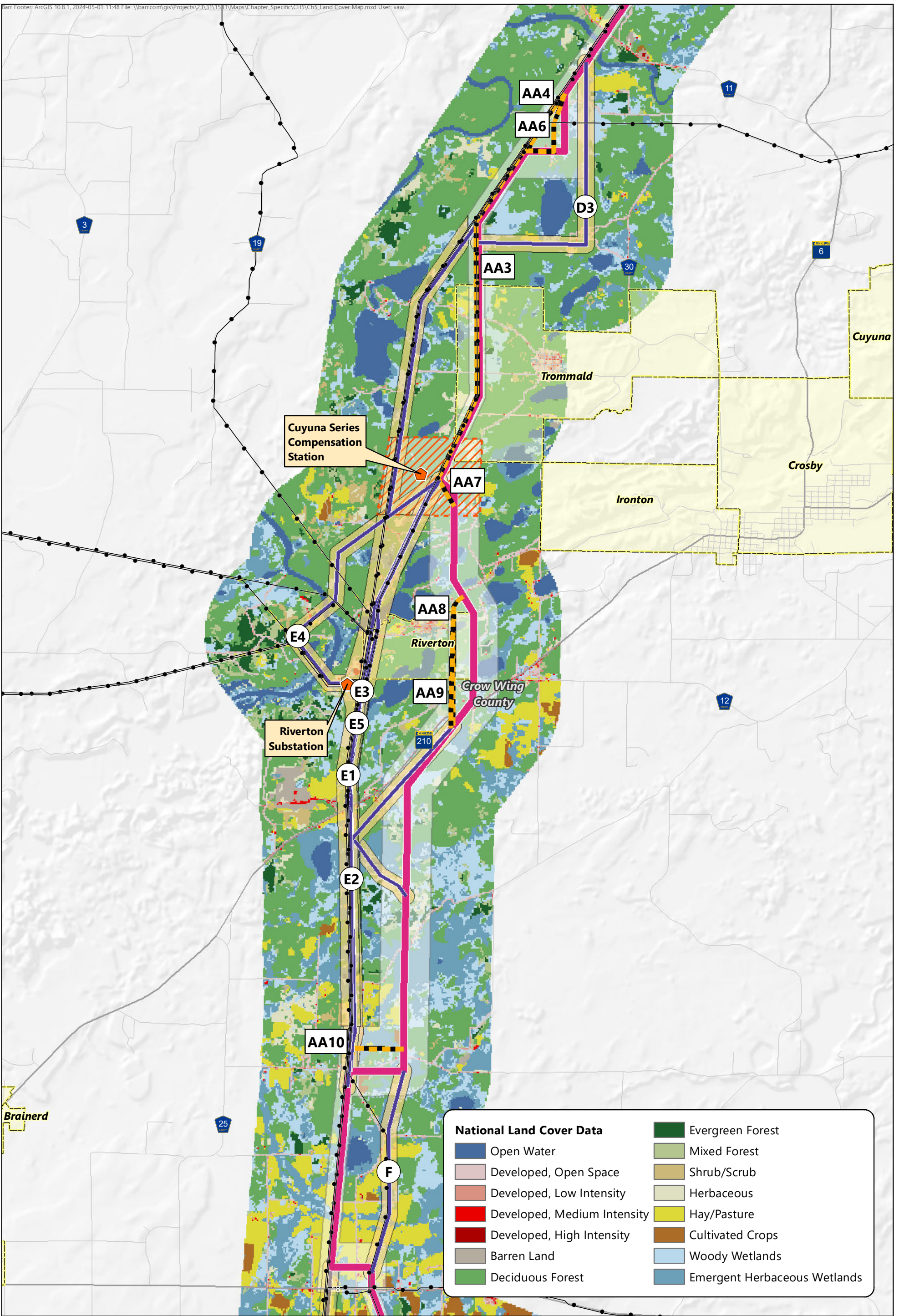


-  Applicants' Proposed Route
-  Existing Transmission Line
-  Route Width
-  Municipal Boundary
-  Route Alternative
-  Alignment Alternative
-  Route Alternative Width

National Land Cover Data			
	Open Water		Evergreen Forest
	Developed, Open Space		Mixed Forest
	Developed, Low Intensity		Shrub/Scrub
	Developed, Medium Intensity		Herbaceous
	Developed, High Intensity		Hay/Pasture
	Barren Land		Cultivated Crops
	Deciduous Forest		Woody Wetlands
			Emergent Herbaceous Wetlands

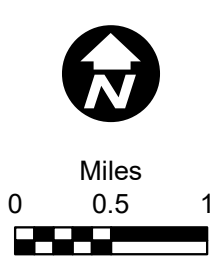


Map 5C-2
LAND COVER MAP
 Hill City to Little Pine Region
 Northland Reliability Project

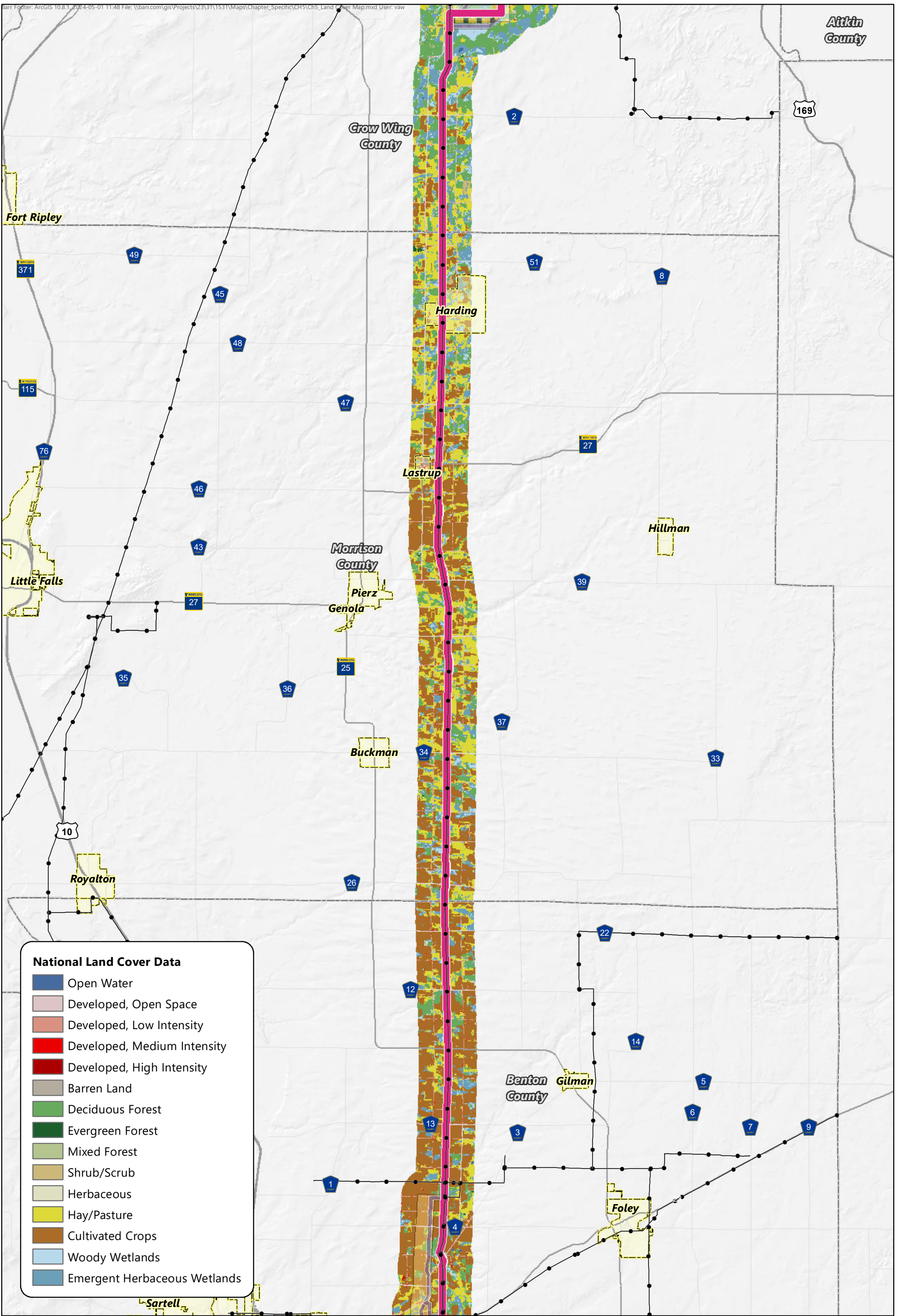


National Land Cover Data			
	Open Water		Evergreen Forest
	Developed, Open Space		Mixed Forest
	Developed, Low Intensity		Shrub/Scrub
	Developed, Medium Intensity		Herbaceous
	Developed, High Intensity		Hay/Pasture
	Barren Land		Cultivated Crops
	Deciduous Forest		Woody Wetlands
			Emergent Herbaceous Wetlands

- Applicants' Proposed Route
- Existing Transmission Line
- Municipal Boundary
- Route Width
- Riverton Substation
- Cuyuna Series Compensation Station
- Route Alternative
- Substation Siting Area
- Alignment Alternative
- Route Alternative Width



Map 5C-3
LAND COVER MAP
 Cole Lake/Riverton Region
 Northland Reliability Project



Atkin County

Grow Wing County

Fort Ripley

Harding

Lastrup

Morrison County

Pierz
Genola

Hillman

Little Falls

Buckman

Royalton

Benton County

Gilman

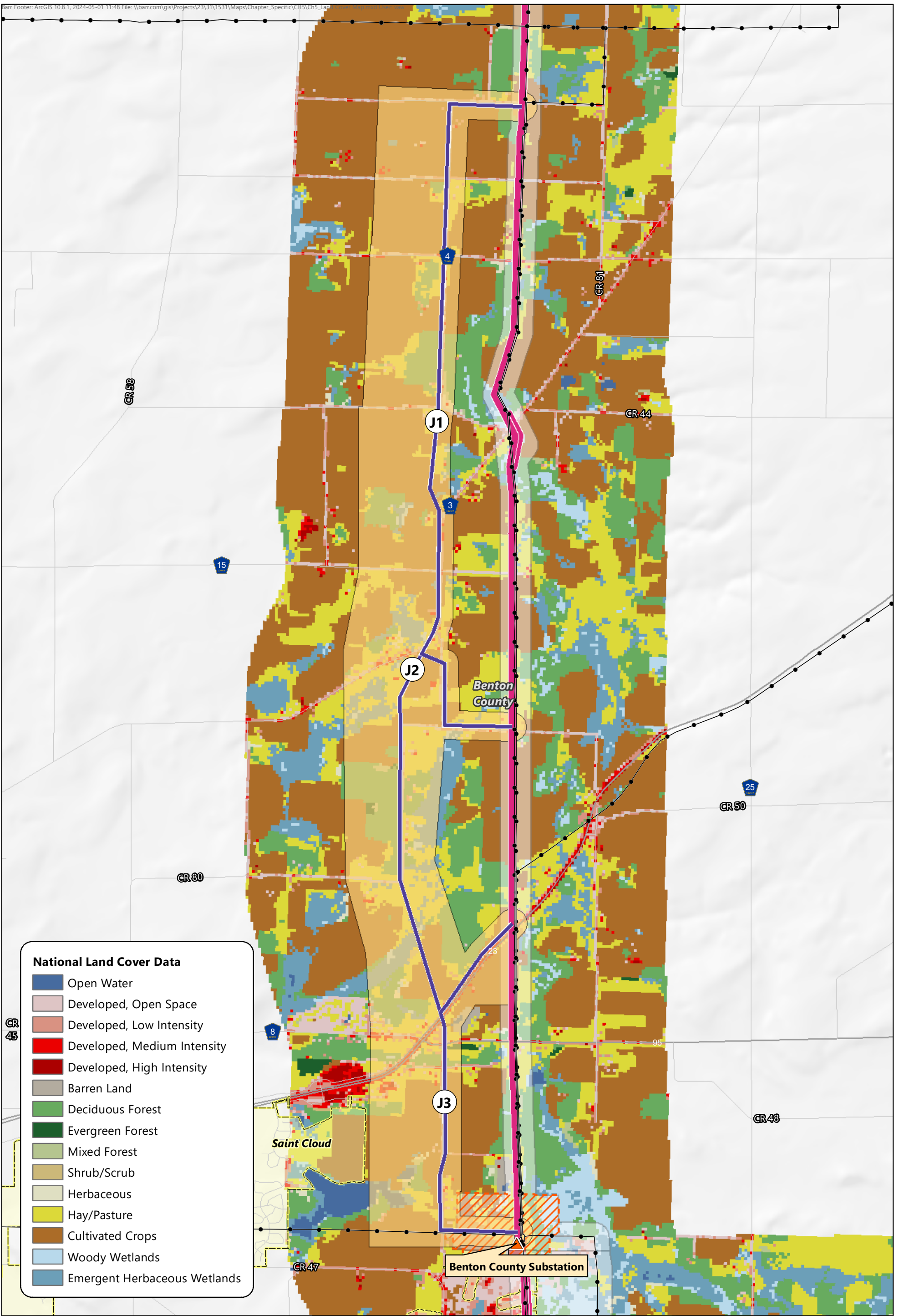
Foley

Sartell

Map 5C-5

LAND COVER MAP
Morrison County Region
Northland Reliability Project

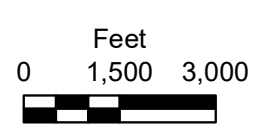




National Land Cover Data

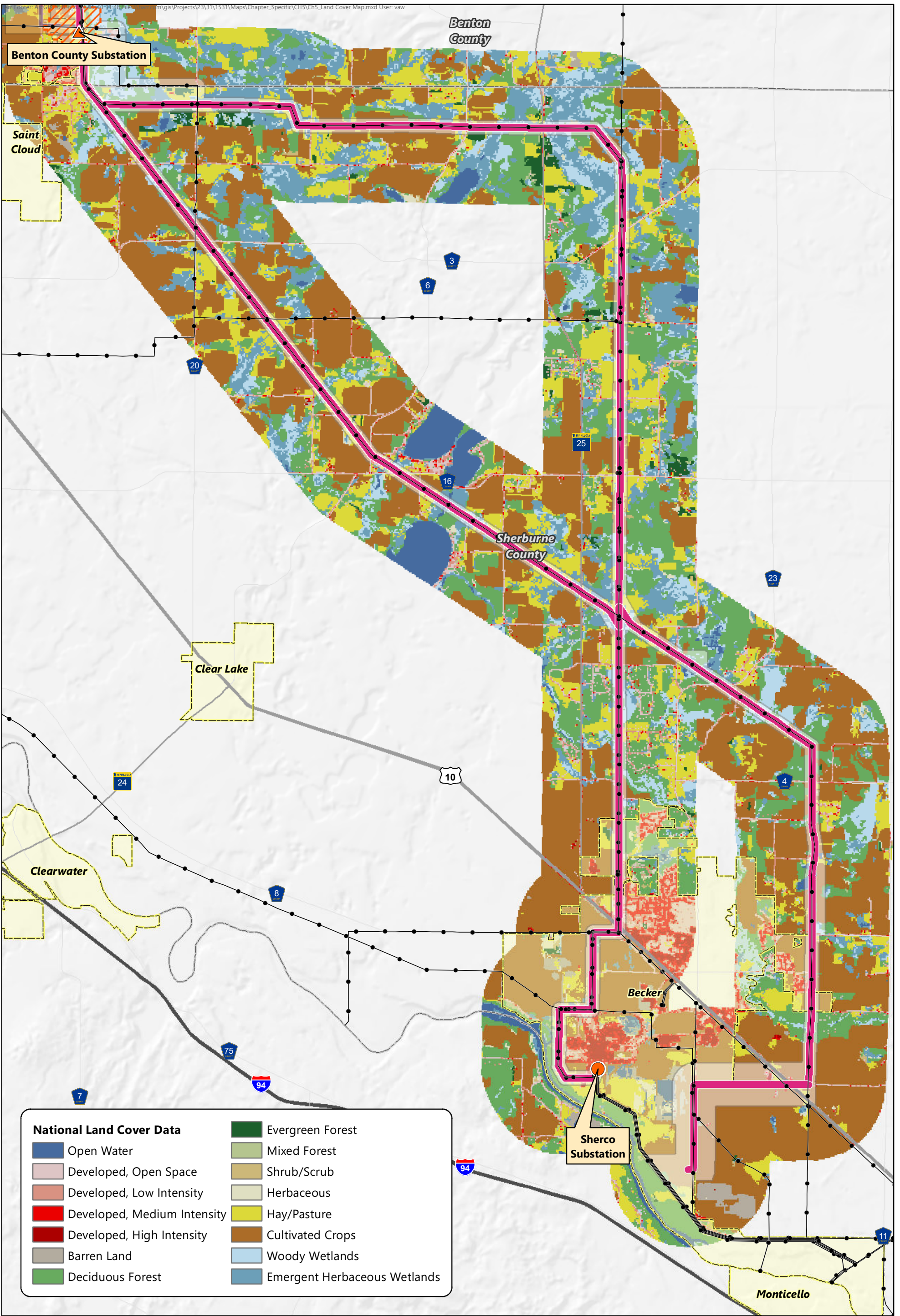
- Open Water
- Developed, Open Space
- Developed, Low Intensity
- Developed, Medium Intensity
- Developed, High Intensity
- Barren Land
- Deciduous Forest
- Evergreen Forest
- Mixed Forest
- Shrub/Scrub
- Herbaceous
- Hay/Pasture
- Cultivated Crops
- Woody Wetlands
- Emergent Herbaceous Wetlands

- Applicants' Proposed Route
- Route Width
- Route Alternative
- Alignment Alternative
- Route Alternative Width
- Existing Transmission Line
- Benton County Substation
- Substation Siting Area
- Municipal Boundary



Map 5C-6

LAND COVER MAP
 Benton County Elk River Region
 Northland Reliability Project



Map 5C-7

LAND COVER MAP
 Sherburne County Region
 Northland Reliability Project

