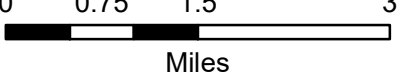


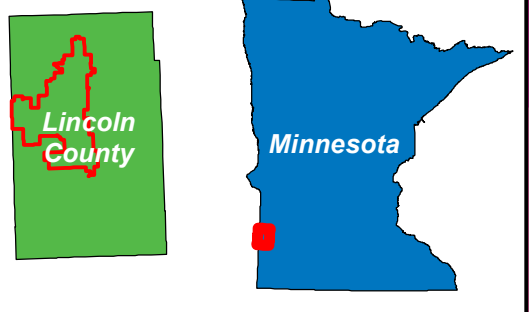
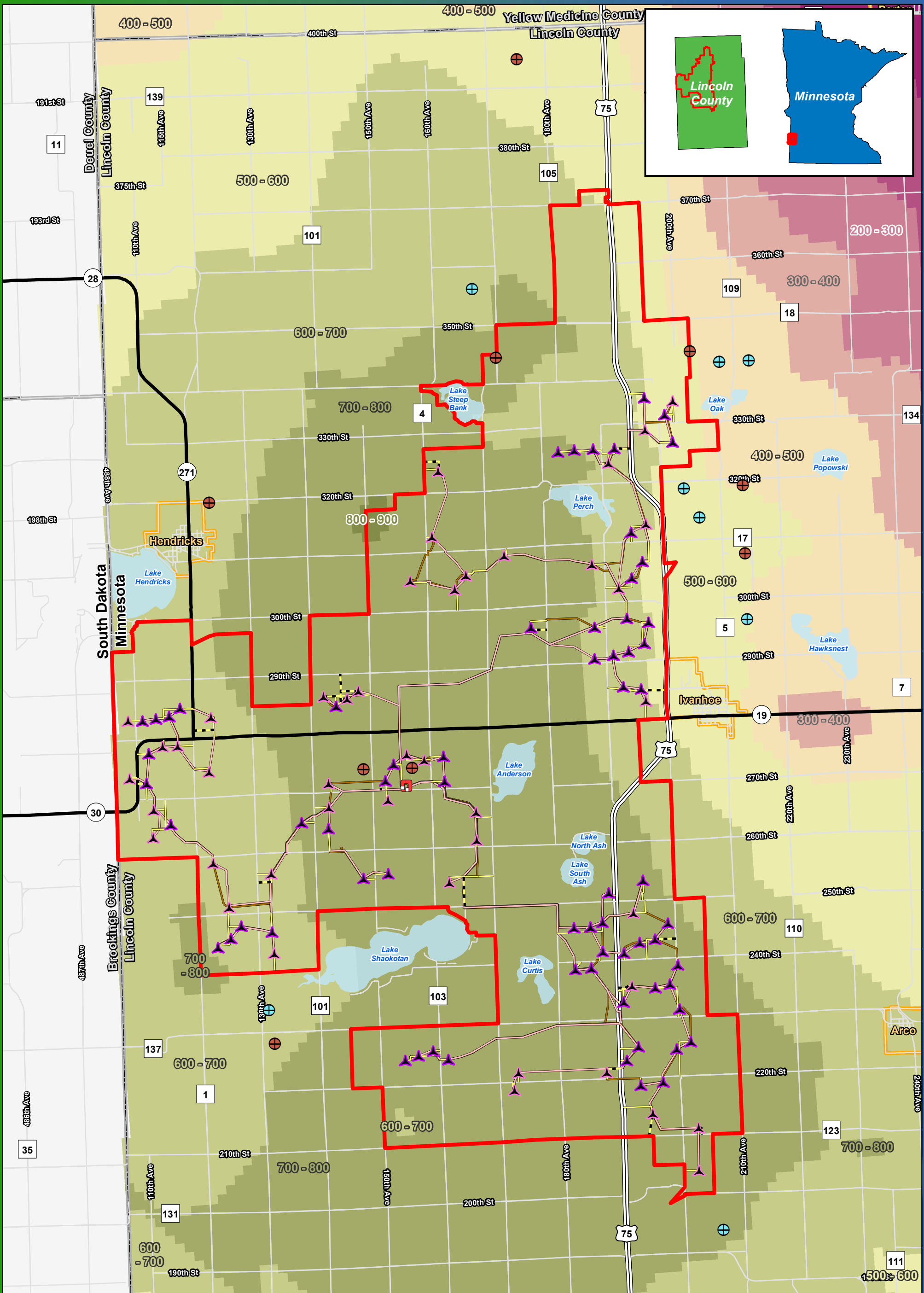
**Figure 15a**  
**Site Geology and**  
**Depth to Bedrock**  
**Gamesa G126**

**Blazing Star Wind Farm 2**  
**Lincoln County, MN**  
**44.460125, -96.336861**

- |  |  |   |
|--|--|---|
| <ul style="list-style-type: none"> <li> Preliminary Turbine Location</li> <li> Alternate Turbine Location</li> <li> Project Area Boundary</li> <li> Project Substation</li> <li> Access Road</li> <li> Alternate Access Road</li> <li> Collection Line</li> <li> Crane Path</li> </ul> | <ul style="list-style-type: none"> <li> County Boundary</li> <li> Aggregate Pit (Mn/DOT)</li> <li> Aggregate Pit (Prospected)</li> </ul> | <p>Depth to Bedrock (feet)</p> <ul style="list-style-type: none"> <li> 0 - 100</li> <li> 100 - 200</li> <li> 200 - 300</li> <li> 300 - 400</li> <li> 400 - 500</li> <li> 500 - 600</li> <li> 600 - 700</li> <li> 700 - 800</li> <li> 800 - 900</li> </ul> |
|--|--|---|

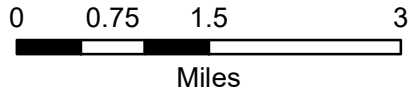


Data Source: Geronimo Energy, MN DNR, MN DOC, Mn Geo, MN DOT



**Figure 15b**  
**Site Geology and**  
**Depth to Bedrock**  
**Acciona 3.0-132**

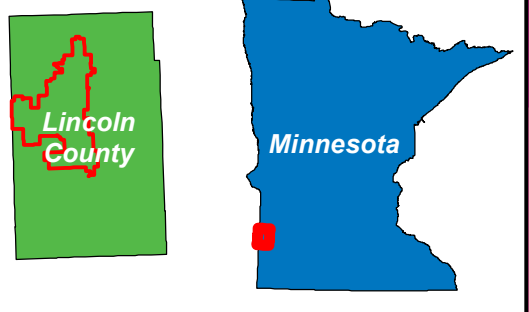
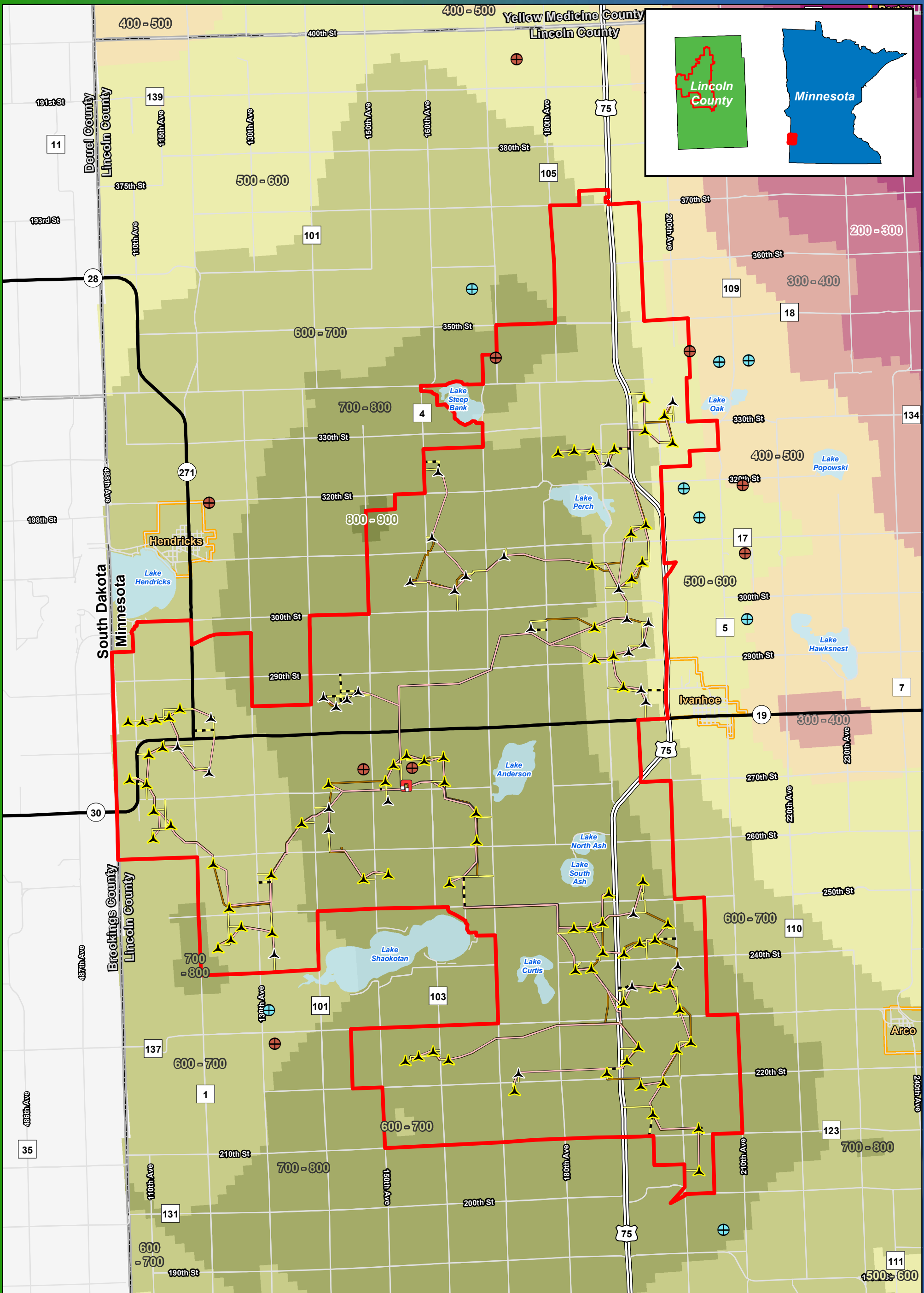
**Blazing Star Wind Farm 2**  
**Lincoln County, MN**  
**44.460125, -96.336861**



Data Source: Geronimo Energy, MN DNR, MN DOC, Mn Geo, MN DOT

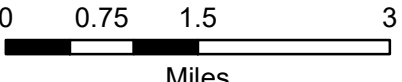
- |  |  |   |
|--|--|---|
| <ul style="list-style-type: none"> <li> Preliminary Turbine Location</li> <li> Alternate Turbine Location</li> <li> Project Area Boundary</li> <li> Project Substation</li> <li> Access Road</li> <li> Alternate Access Road</li> <li> Collection Line</li> <li> Crane Path</li> </ul> | <ul style="list-style-type: none"> <li> County Boundary</li> <li> Aggregate Pit (Mn/DOT)</li> <li> Aggregate Pit (Prospected)</li> </ul> | <p>Depth to Bedrock (feet)</p> <ul style="list-style-type: none"> <li> 0 - 100</li> <li> 100 - 200</li> <li> 200 - 300</li> <li> 300 - 400</li> <li> 400 - 500</li> <li> 500 - 600</li> <li> 600 - 700</li> <li> 700 - 800</li> <li> 800 - 900</li> </ul> |
|--|--|---|





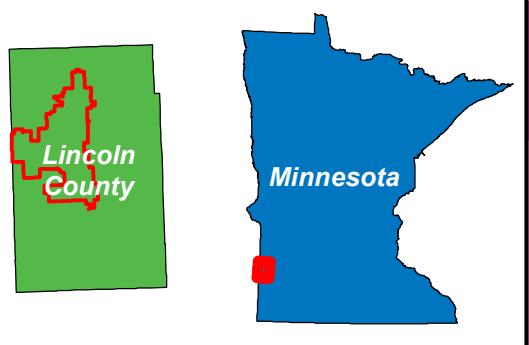
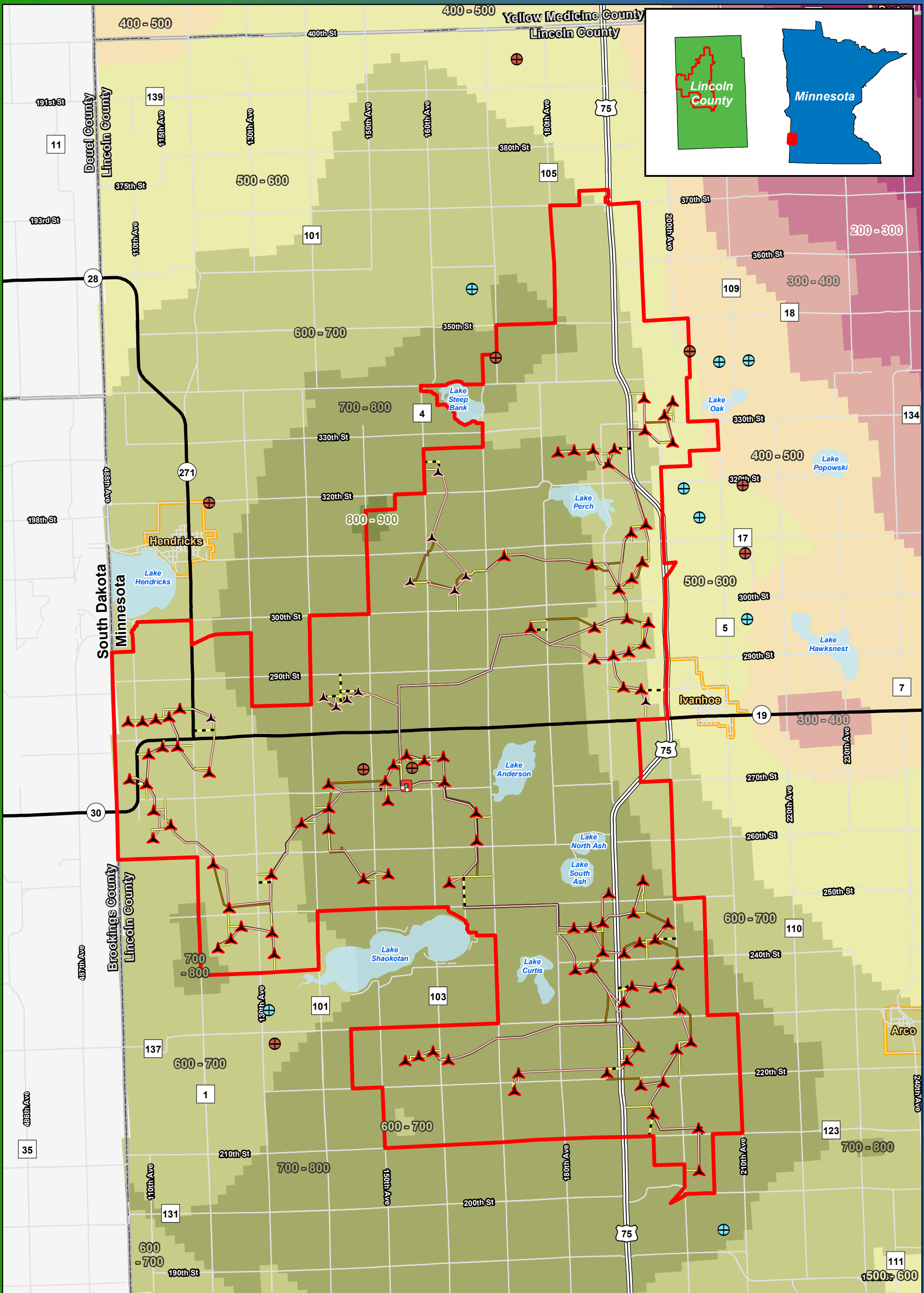
**Figure 15c**  
**Site Geology and**  
**Depth to Bedrock**  
**GE 2.5-116**

**Blazing Star Wind Farm 2**  
**Lincoln County, MN**  
**44.460125, -96.336861**



Data Source: Geronimo Energy, MN DNR, MN DOC, Mn Geo, MN DOT

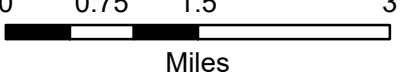
- |  |  |   |
|--|--|---|
| <ul style="list-style-type: none"> <li> Preliminary Turbine Location</li> <li> Alternate Turbine Location</li> <li> Project Area Boundary</li> <li> Project Substation</li> <li> Access Road</li> <li> Alternate Access Road</li> <li> Collection Line</li> <li> Crane Path</li> </ul> | <ul style="list-style-type: none"> <li> County Boundary</li> <li> Aggregate Pit (Mn/DOT)</li> <li> Aggregate Pit (Prospected)</li> </ul> | <p>Depth to Bedrock (feet)</p> <ul style="list-style-type: none"> <li> 0 - 100</li> <li> 100 - 200</li> <li> 200 - 300</li> <li> 300 - 400</li> <li> 400 - 500</li> <li> 500 - 600</li> <li> 600 - 700</li> <li> 700 - 800</li> <li> 800 - 900</li> </ul> |
|--|--|---|



**Figure 15d**  
**Site Geology and**  
**Depth to Bedrock**  
**Vestas V110**

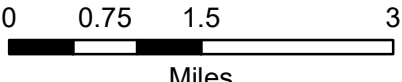
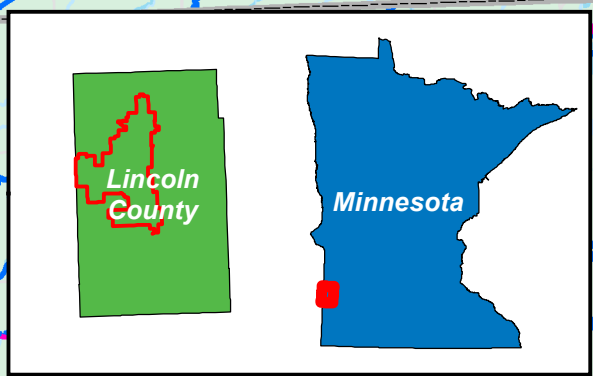
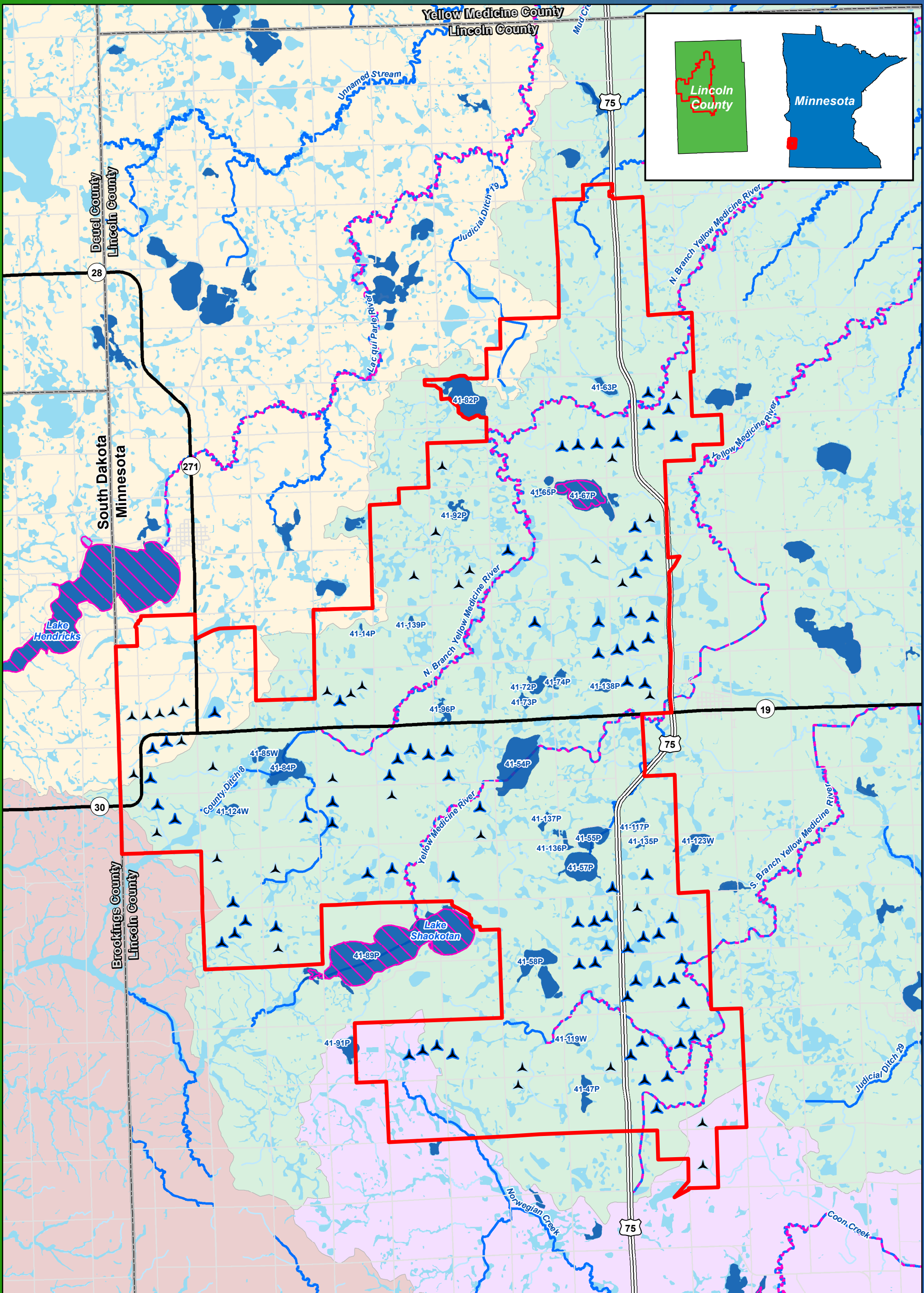
**Blazing Star Wind Farm 2**  
**Lincoln County, MN**  
**44.460125, -96.336861**

- |  |  |   |
|--|--|---|
| <ul style="list-style-type: none"> <li> Preliminary Turbine Location</li> <li> Alternate Turbine Location</li> <li> Project Area Boundary</li> <li> Project Substation</li> <li> Access Road</li> <li> Alternate Access Road</li> <li> Collection Line</li> <li> Crane Path</li> </ul> | <ul style="list-style-type: none"> <li> County Boundary</li> <li> Aggregate Pit (Mn/DOT)</li> <li> Aggregate Pit (Prospected)</li> </ul> | <p>Depth to Bedrock (feet)</p> <ul style="list-style-type: none"> <li> 0 - 100</li> <li> 100 - 200</li> <li> 200 - 300</li> <li> 300 - 400</li> <li> 400 - 500</li> <li> 500 - 600</li> <li> 600 - 700</li> <li> 700 - 800</li> <li> 800 - 900</li> </ul> |
|--|--|---|



Data Source: Geronimo Energy, MN DNR, MN DOC, Mn Geo, MN DOT





Data Source: Geronimo Energy, MN DNR, MN DOC, Mn Geo, MPCA

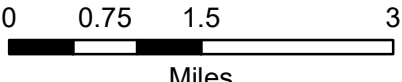
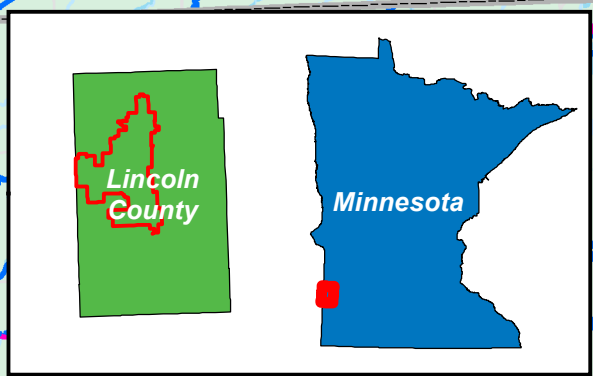
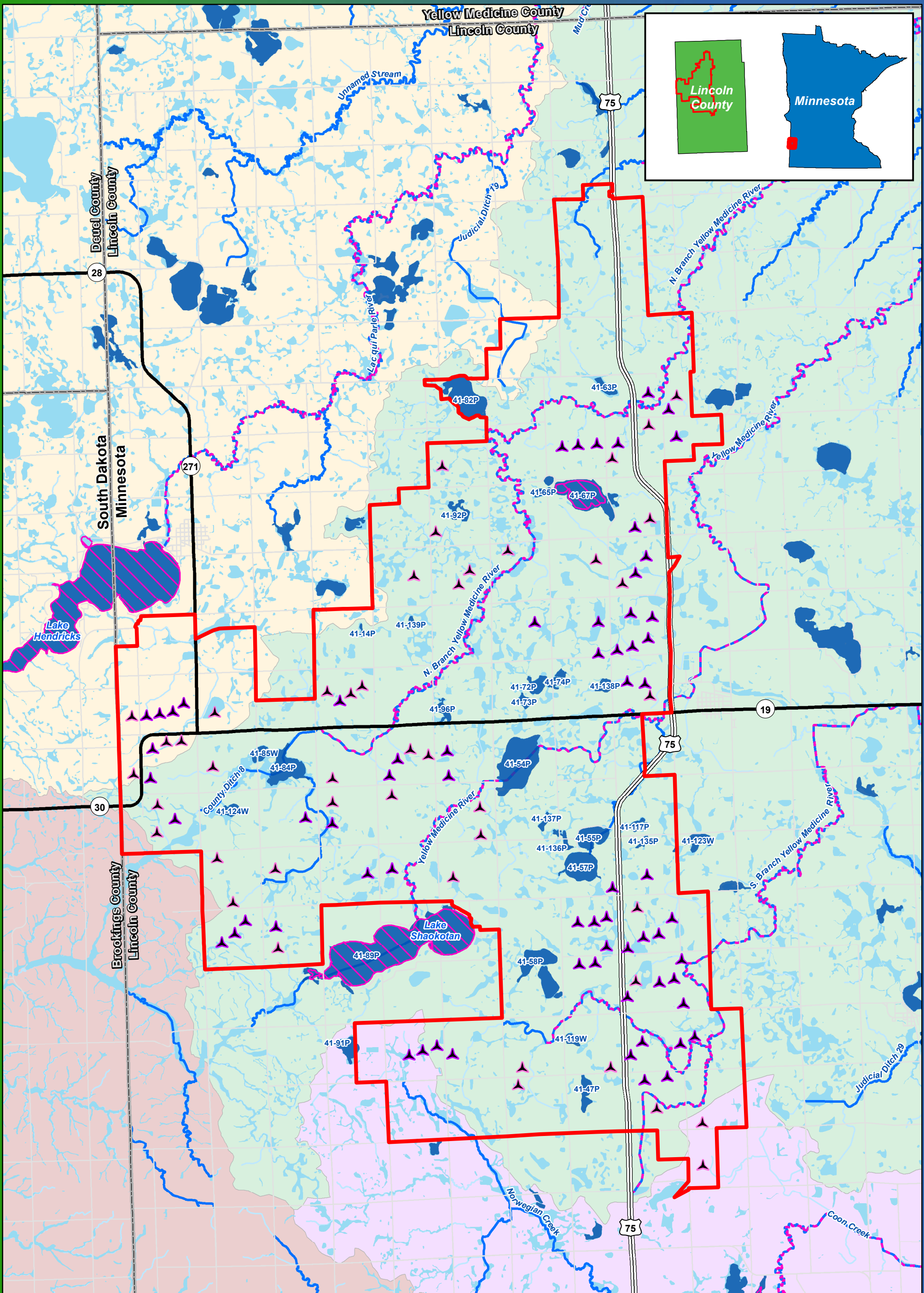
**Figure 16a**  
**Surface Waters**  
**Gamesa G126**

**Blazing Star Wind Farm 2**  
**Lincoln County, MN**  
**44.460125, -96.336861**

- Preliminary Turbine Location
- Alternate Turbine Location
- Project Area Boundary
- Impaired Stream
- Impaired Lakes
- MN NWI Wetland
- 24K Stream or Ditch
- Public Water Watercourse
- Public Water Basin/Wetland
- HUC 8**
- Minnesota River - Yellow Medicine River Watershed
- Lac Qui Parle River Watershed
- Upper Big Sioux River Watershed
- Redwood

All mapped water features will be field verified





Data Source: Geronimo Energy, MN DNR, MN DOC, Mn Geo, MPCA

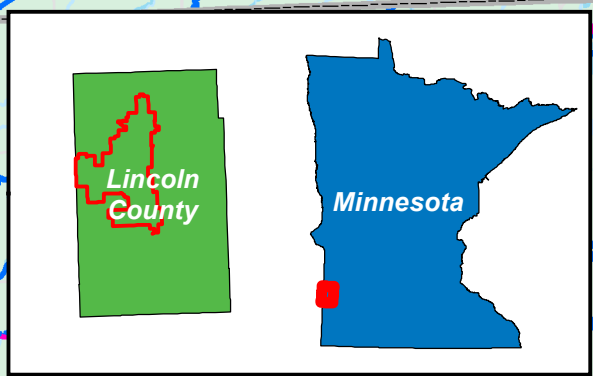
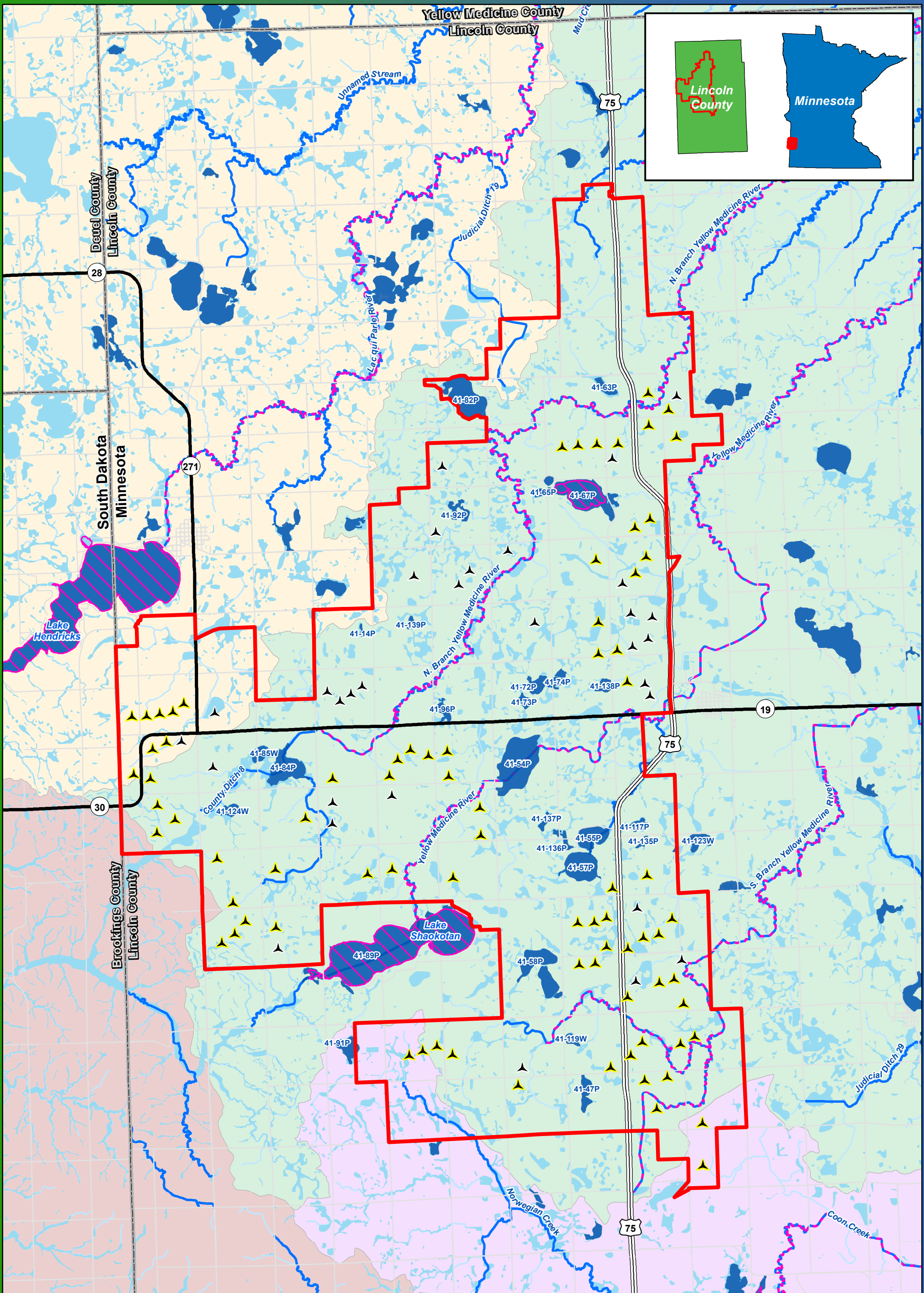
**Figure 16b**  
**Surface Waters**  
**Acciona 3.0-132**

**Blazing Star Wind Farm 2**  
**Lincoln County, MN**  
**44.460125, -96.336861**

- Preliminary Turbine Location
- Alternate Turbine Location
- Project Area Boundary
- Impaired Stream
- Impaired Lakes
- MN NWI Wetland
- 24K Stream or Ditch
- Public Water Watercourse
- Public Water Basin/Wetland
- HUC 8**
- Minnesota River - Yellow Medicine River Watershed
- Lac Qui Parle River Watershed
- Upper Big Sioux River Watershed
- Redwood

All mapped water features will be field verified





0 0.75 1.5 3  
Miles



Data Source: Geronimo Energy, MN DNR, MN DOC, Mn Geo, MPCA

**Figure 16c**  
**Surface Waters**  
**GE 2.5-116**

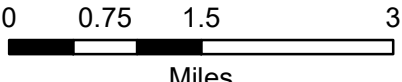
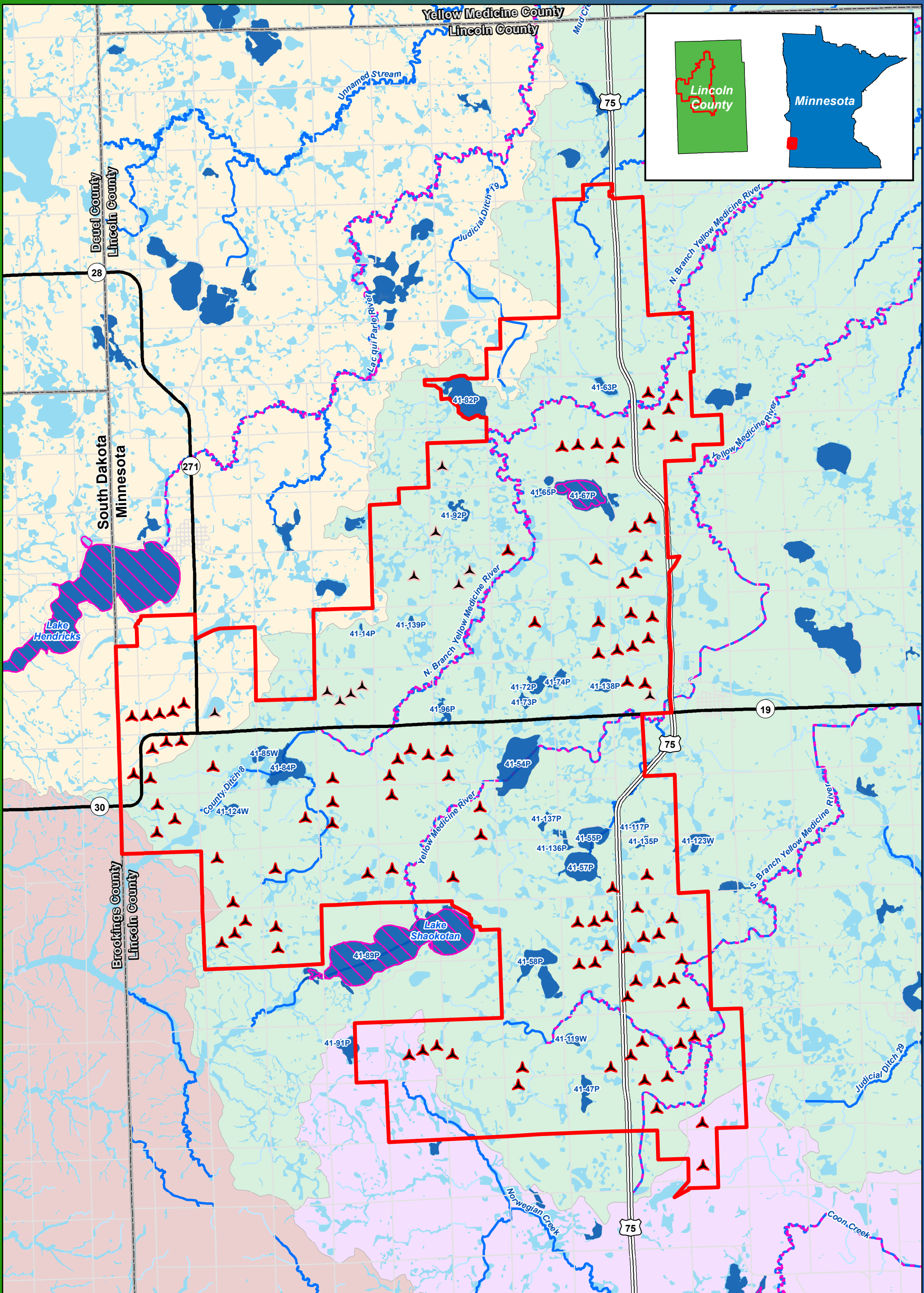
**Blazing Star Wind Farm 2**  
**Lincoln County, MN**

44.460125, -96.336861

- Preliminary Turbine Location
- Alternate Turbine Location
- Project Area Boundary
- Impaired Stream
- Impaired Lakes
- MN NWI Wetland
- 24K Stream or Ditch
- Public Water Watercourse
- Public Water Basin/Wetland
- HUC 8**
- Minnesota River - Yellow Medicine River Watershed
- Lac Qui Parle River Watershed
- Upper Big Sioux River Watershed
- Redwood

All mapped water features will be field verified





Data Source: Geronimo Energy, MN DNR, MN DOC, Mn Geo, MPCA

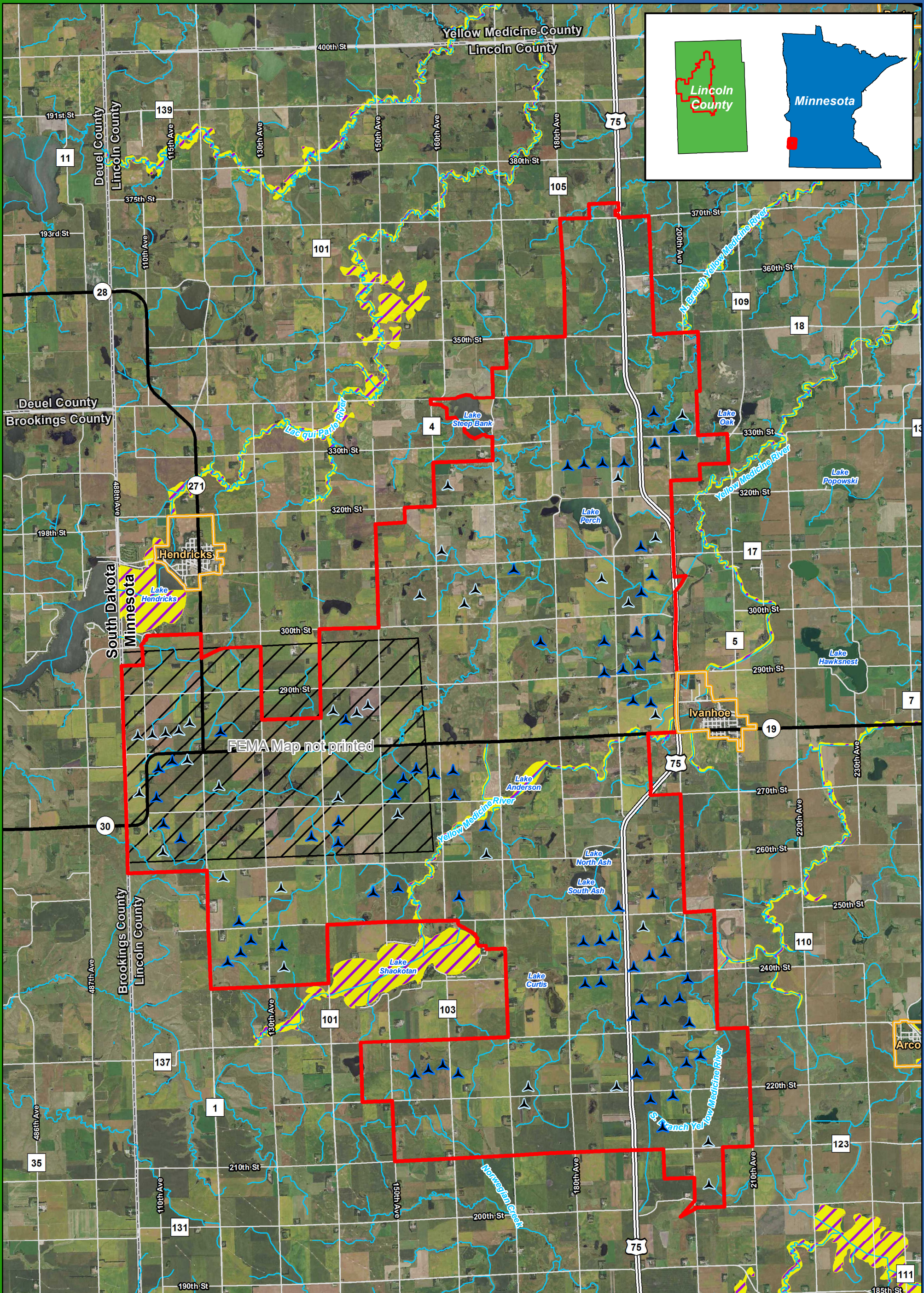
**Figure 16d**  
**Surface Waters**  
**Vestas V110**

**Blazing Star Wind Farm 2**  
**Lincoln County, MN**  
**44.460125, -96.336861**

- Preliminary Turbine Location
  - Alternate Turbine Location
  - Project Area Boundary
  - Impaired Stream
  - Impaired Lakes
  - MN NWI Wetland
  - 24K Stream or Ditch
  - Public Water Watercourse
  - Public Water Basin/Wetland
- HUC 8**
- Minnesota River - Yellow Medicine River Watershed
  - Lac Qui Parle River Watershed
  - Upper Big Sioux River Watershed
  - Redwood

All mapped water features will be field verified





**Figure 17a**  
**FEMA Floodplain**  
**Gamesa G126**

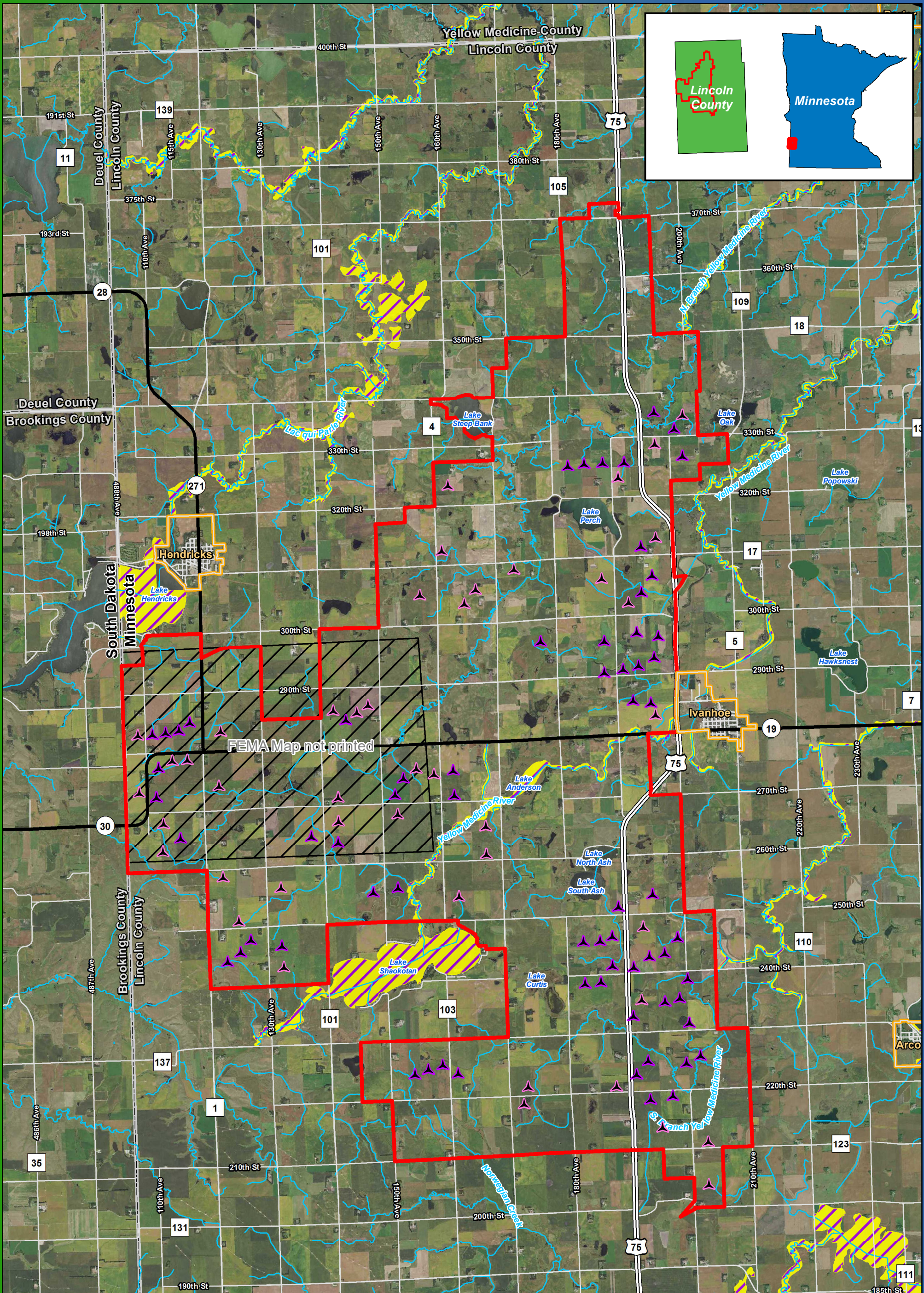
**Blazing Star Wind Farm 2**  
**Lincoln County, MN**  
 44.460125, -96.336861

- Preliminary Turbine Location
- Alternate Turbine Location
- Project Area Boundary
- County Boundary
- FEMA Map Not Printed
- 100 Year Floodplain
- 24k Stream or Ditch



Imagery Source: 2015 Color FSA  
 Data Source: Geronimo Energy, MN DNR





**BLAZING STAR 2**  
WIND FARM  
Lincoln County, MN

0 0.75 1.5 3  
Miles

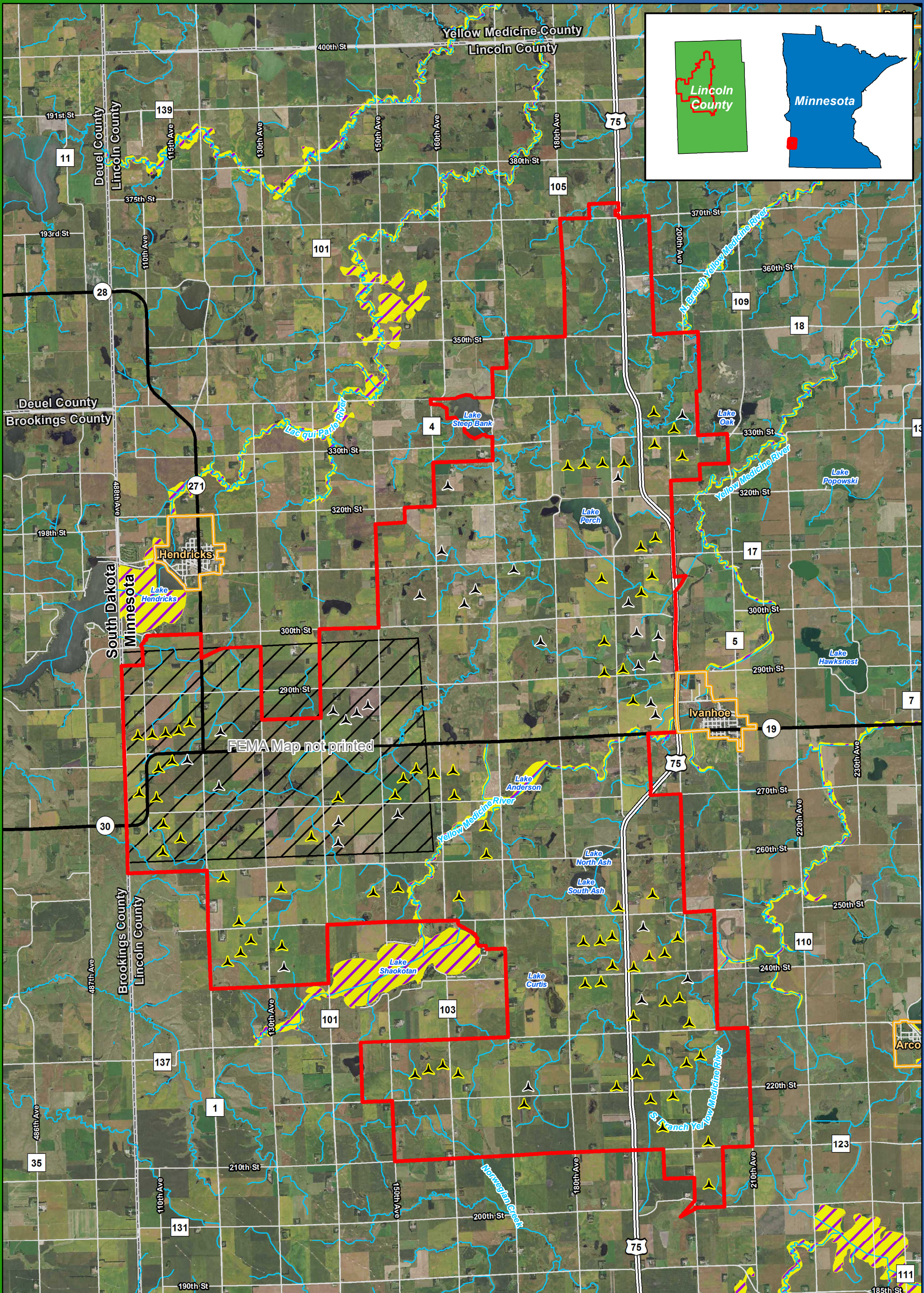
Imagery Source: 2015 Color FSA  
Data Source: Geronimo Energy, MN DNR

**Figure 17b**  
**FEMA Floodplain**  
**Acciona 3.0-132**

**Blazing Star Wind Farm 2**  
**Lincoln County, MN**  
44.460125, -96.336861

- Preliminary Turbine Location
- Alternate Turbine Location
- Project Area Boundary
- County Boundary
- FEMA Map Not Printed
- 100 Year Floodplain
- 24k Stream or Ditch





**Figure 17c**  
**FEMA Floodplain**  
**GE 2.5-116**

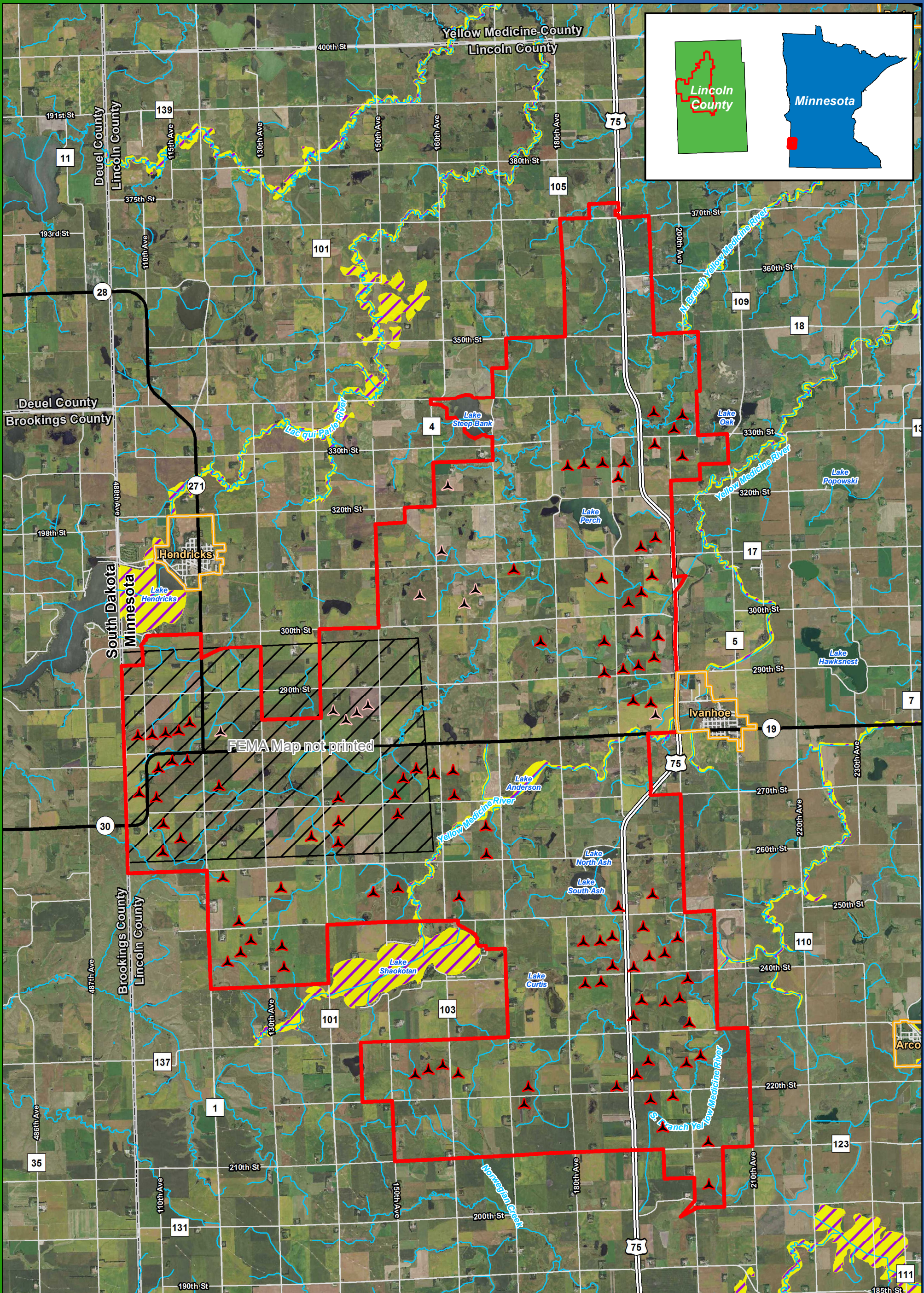
**Blazing Star Wind Farm 2**  
**Lincoln County, MN**  
 44.460125, -96.336861

- Preliminary Turbine Location
- Alternate Turbine Location
- Project Area Boundary
- County Boundary
- FEMA Map Not Printed
- 100 Year Floodplain
- 24k Stream or Ditch

Lincoln County, MN

Miles





**BLAZING STAR 2**  
WIND FARM  
Lincoln County, MN

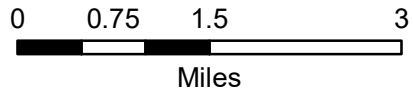
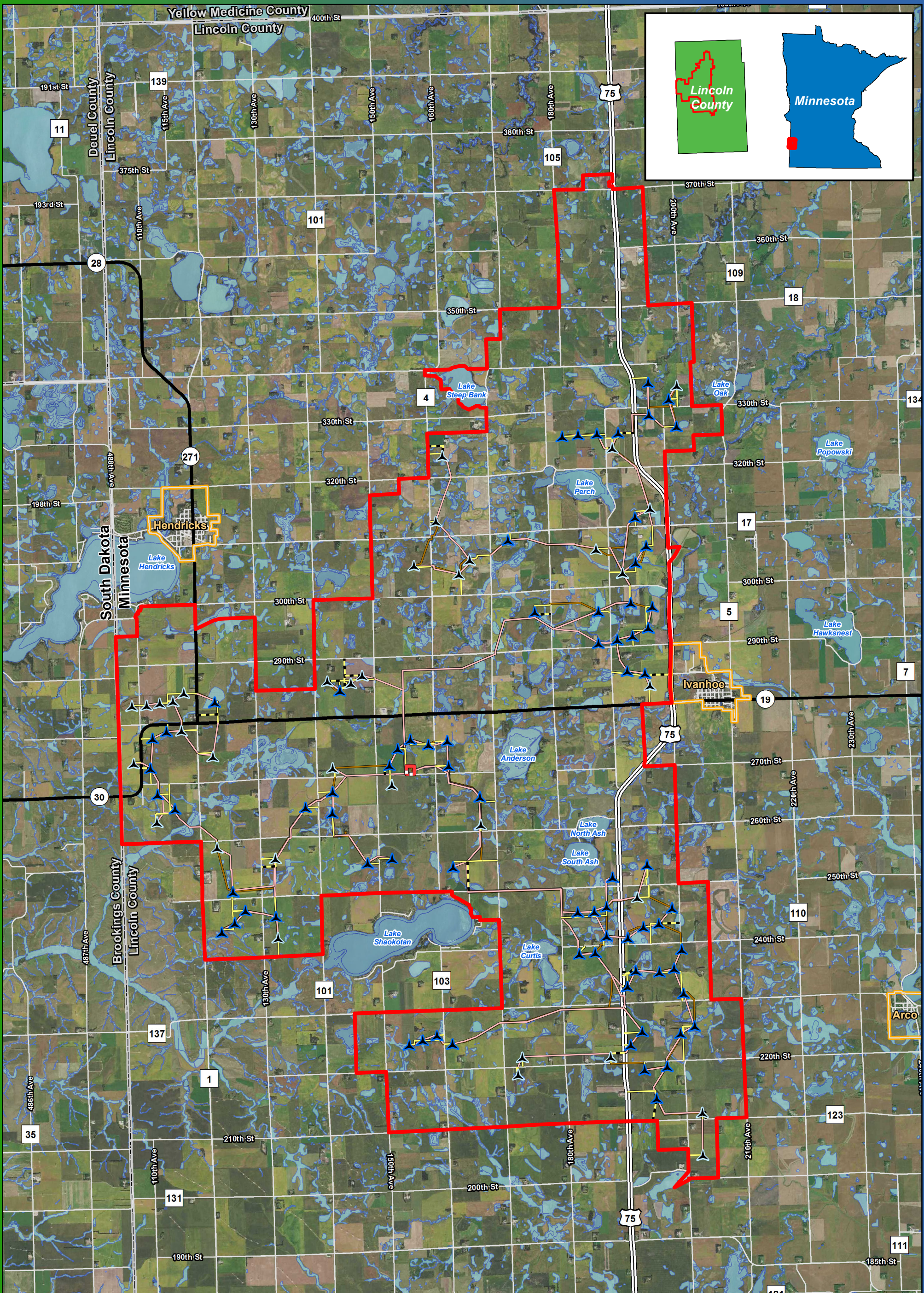
0 0.75 1.5 3  
Miles

**Figure 17d**  
**FEMA Floodplain**  
**Vestas V110**

**Blazing Star Wind Farm 2**  
**Lincoln County, MN**  
44.460125, -96.336861

- Preliminary Turbine Location
- Alternate Turbine Location
- Project Area Boundary
- County Boundary
- FEMA Map Not Printed
- 100 Year Floodplain
- 24k Stream or Ditch



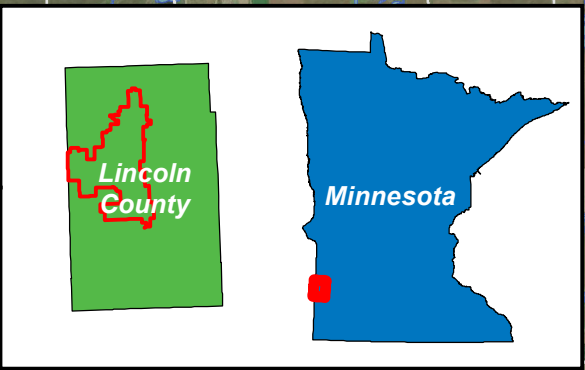
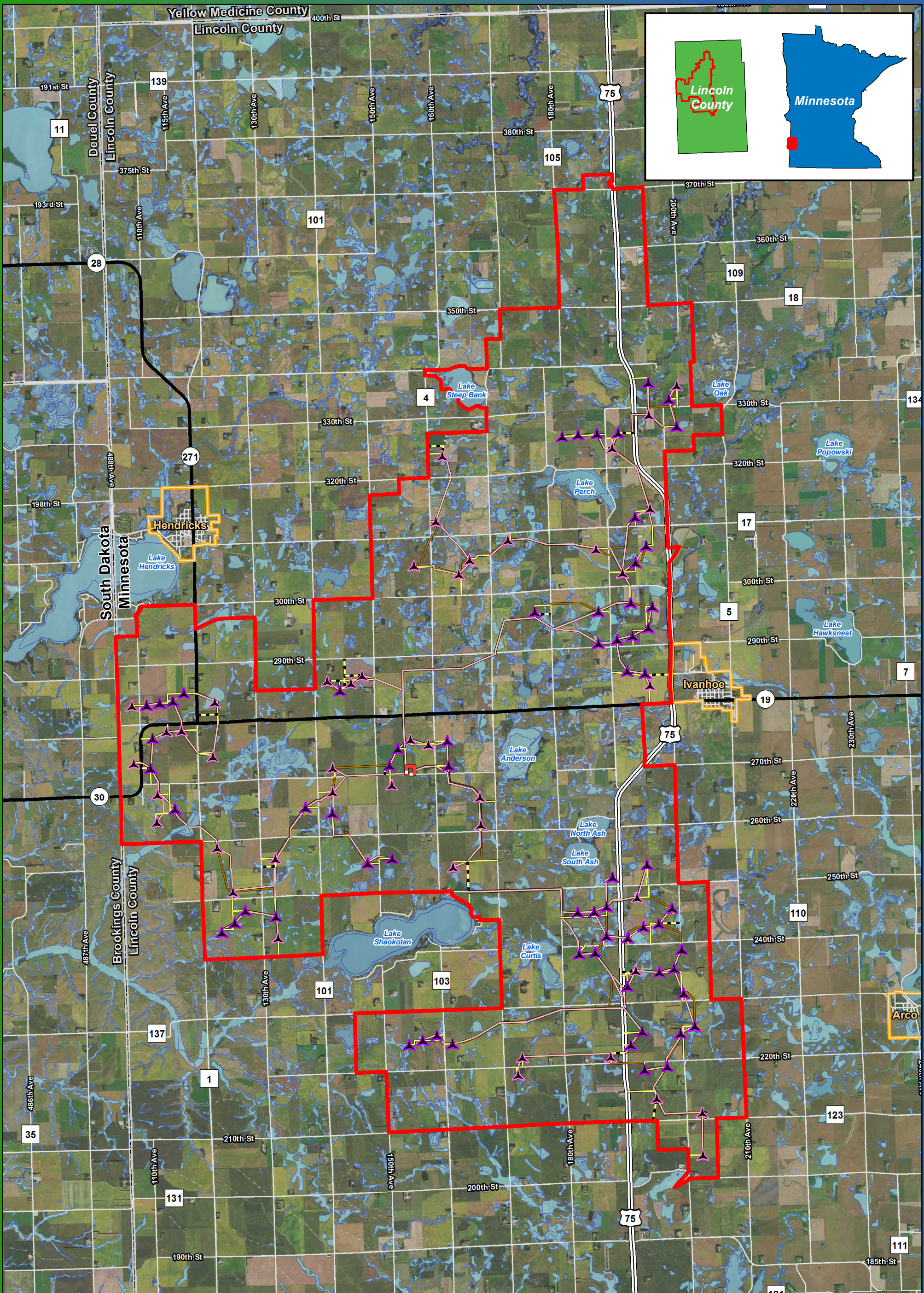


**Figure 18a**  
**Wetlands Inventory**  
**Gamesa G126**

**Blazing Star Wind Farm 2**  
**Lincoln County, MN**  
**44.460125, -96.336861**

- Preliminary Turbine Location
  - Alternate Turbine Location
  - Project Area Boundary
  - Project Substation
  - Access Road
  - Alternate Access Road
  - Collection Line
  - Crane Path
  - County Boundary
  - NWI (MNDNR Update)
- \*Turbines are not to scale  
 \*All mapped water features will be field verified





**Figure 18b**  
**Wetlands Inventory**  
**Acciona 3.0-132**

**Blazing Star Wind Farm 2**  
**Lincoln County, MN**

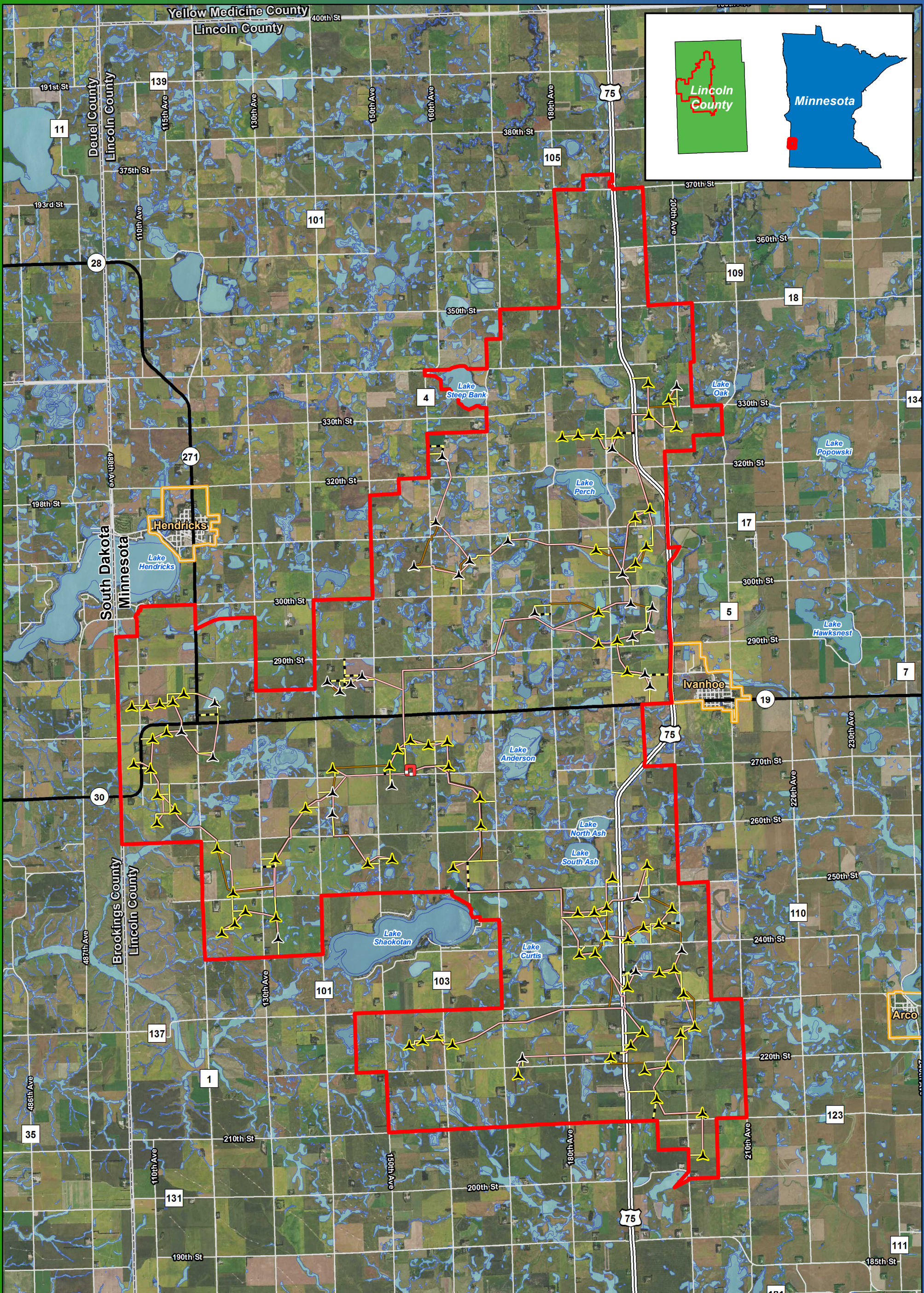

44.460125, -96.336861




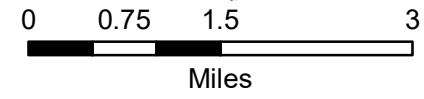
- Preliminary Turbine Location
- Alternate Turbine Location
- Project Area Boundary
- Project Substation
- Access Road
- Alternate Access Road
- Collection Line
- Crane Path
- County Boundary
- NWI (MNDNR Update)

\*Turbines are not to scale  
 \*All mapped water features will be field verified



Lincoln County, MN








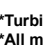




0 0.75 1.5 3  
Miles

Imagery Source: 2015 Color FSA  
Data Source: Geronimo Energy, MN DNR, USFWS

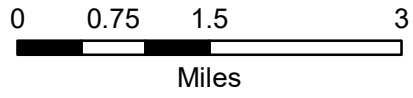
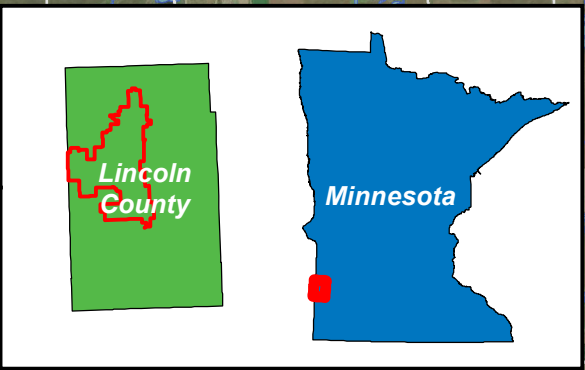
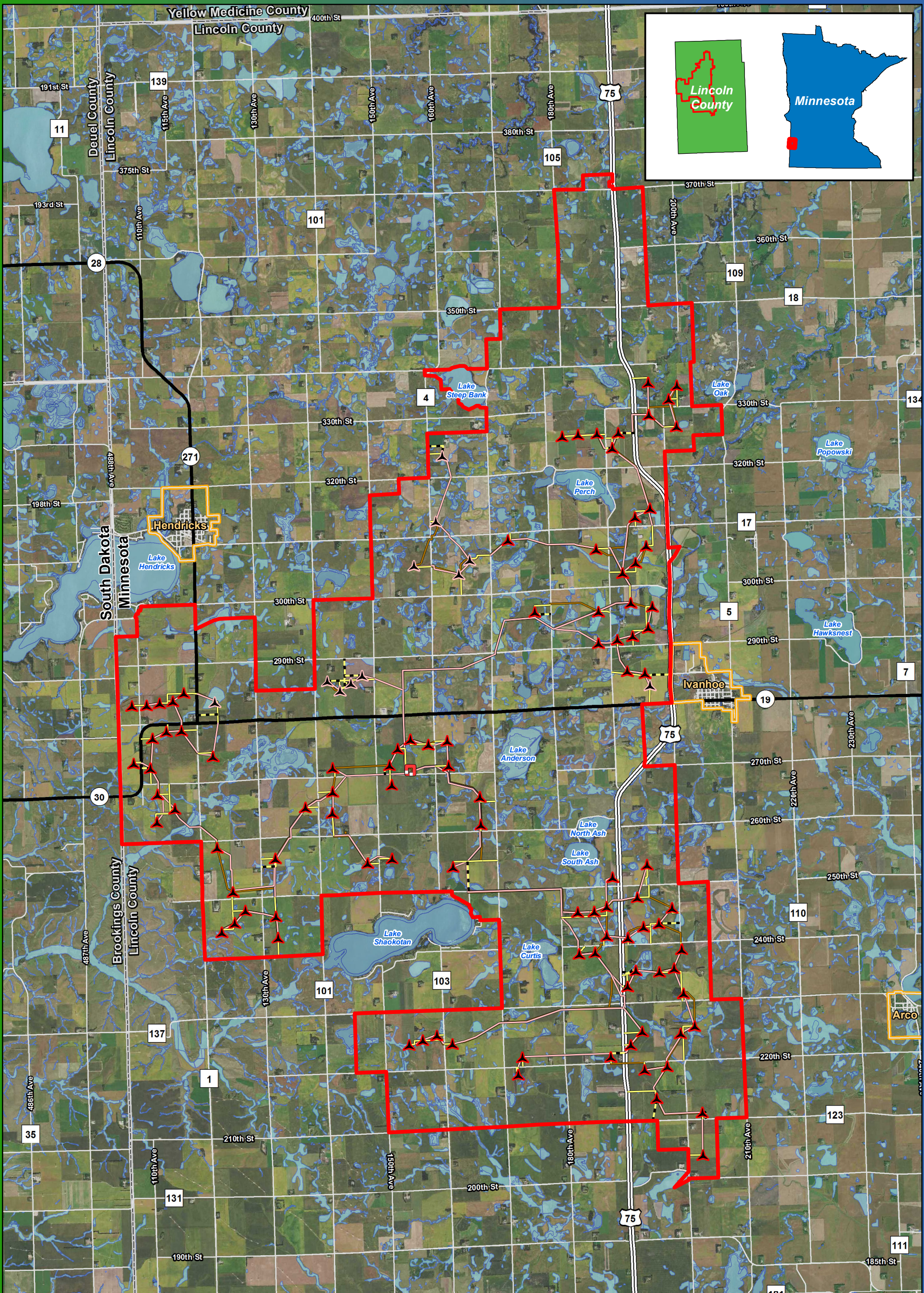
**Figure 18c**  
**Wetlands Inventory**  
**GE 2.5-116**

**Blazing Star Wind Farm 2**  
**Lincoln County, MN**  
**44.460125, -96.336861**

	Preliminary Turbine Location		Crane Path
	Alternate Turbine Location		County Boundary
	Project Area Boundary		NWI (MNDNR Update)
	Project Substation		
	Access Road		
	Alternate Access Road		
	Collection Line		

\*Turbines are not to scale  
 \*All mapped water features will be field verified



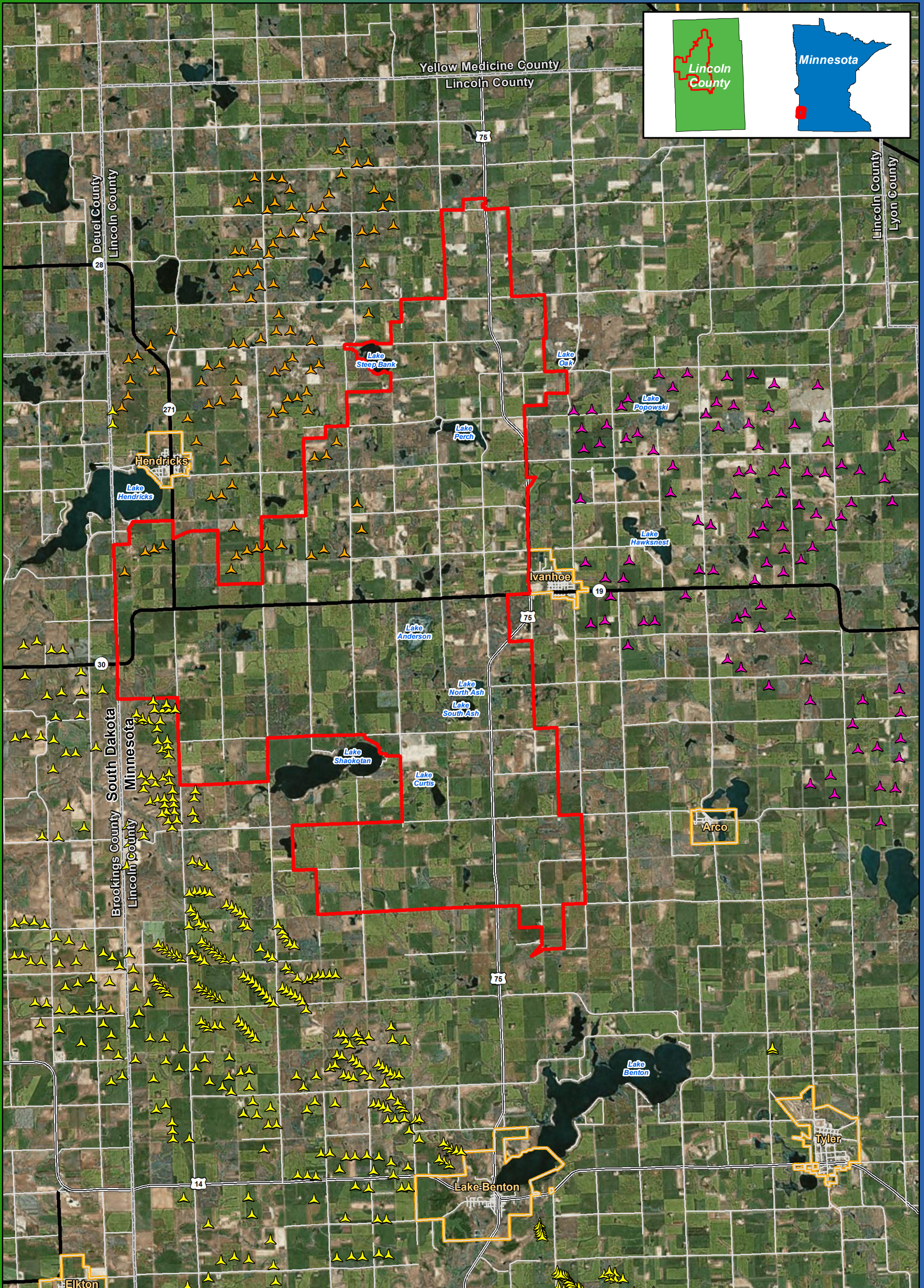


**Figure 18d**  
**Wetlands Inventory**  
**Vestas V110**

**Blazing Star Wind Farm 2**  
**Lincoln County, MN**  
**44.460125, -96.336861**

- Preliminary Turbine Location
  - Alternate Turbine
  - Project Area
  - Project Substation
  - Access Road
  - Alternate Access
  - Collection Line
  - Crane Path
  - County Boundary
  - NWI (MNDNR Update)
- \*Turbines are not to scale  
 \*All mapped water features will be field verified



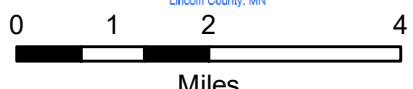


**Figure 19**  
**Existing and Permitted Wind Turbines**

**Blazing Star Wind Farm 2**  
**Lincoln County, MN**

44.460125, -96.336861

- Project Area Boundary
- ▲ Existing Turbine Location
- ▲ Red Pine Permitted Turbine (V100/V110)
- ▲ Blazing Star Permitted Turbine (V110)



Imagery Source: 2015 Color FSA  
 Data Source: Geronimo Energy, MN DNR, USGS, Census