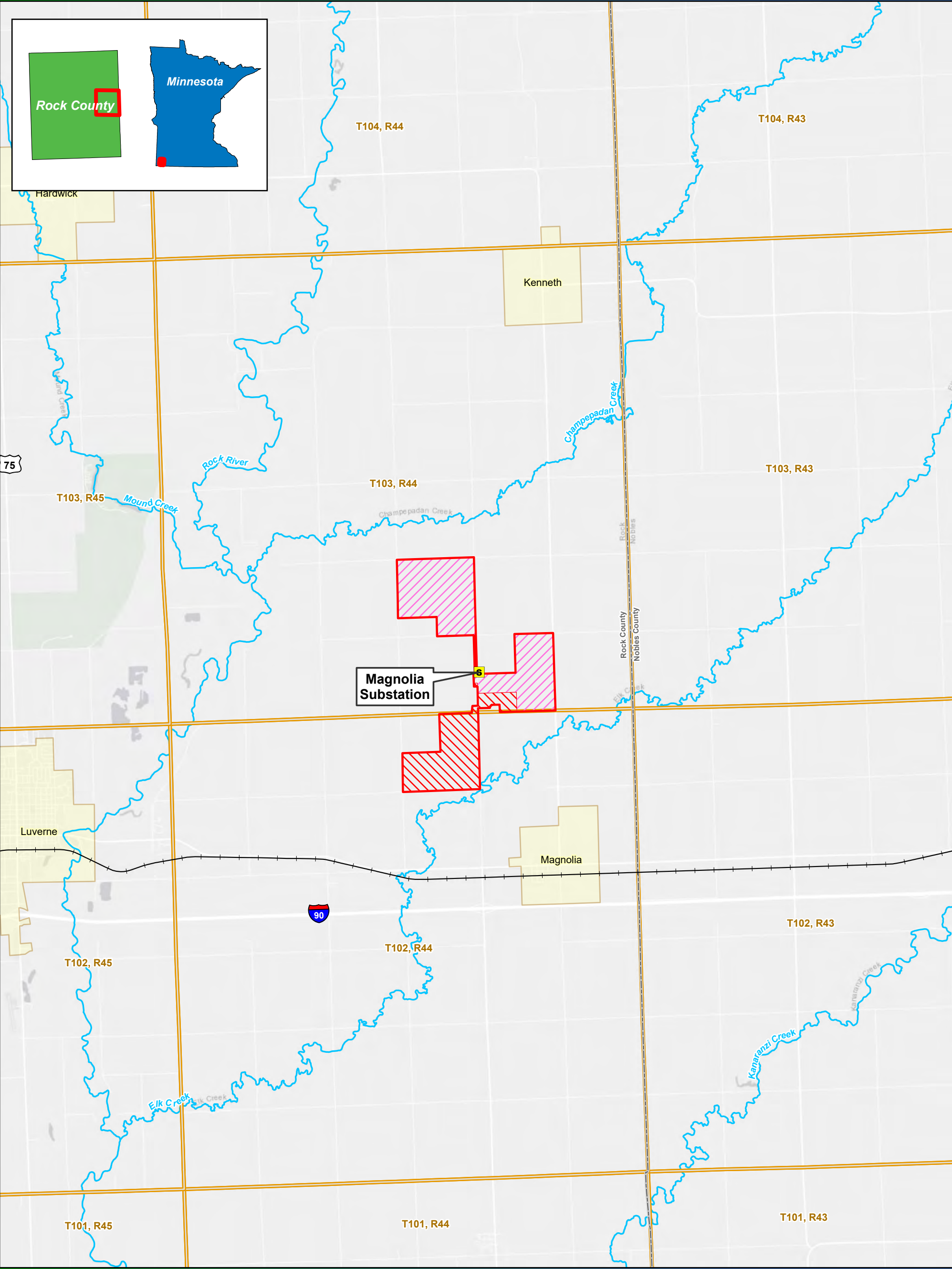


Figures

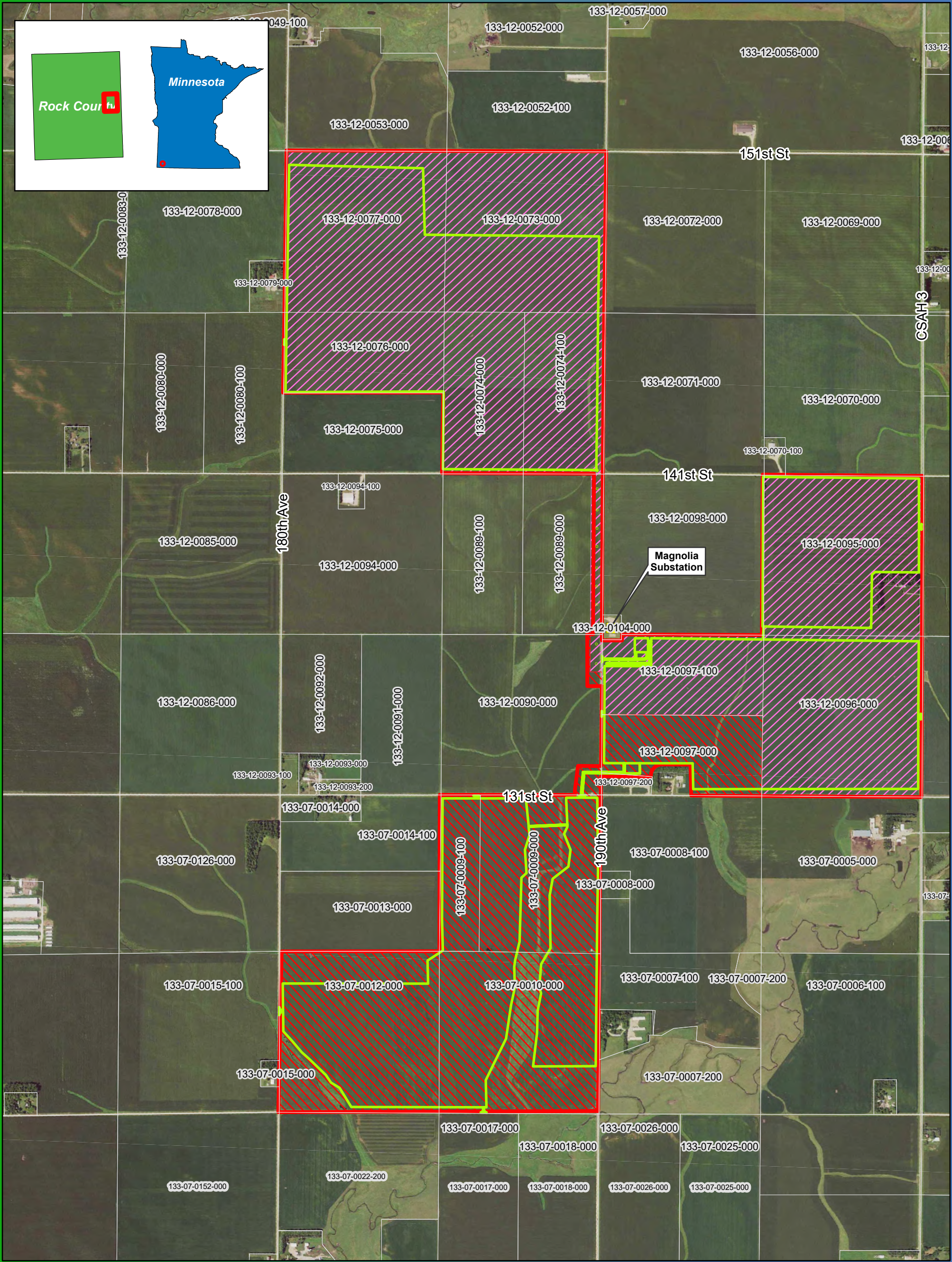


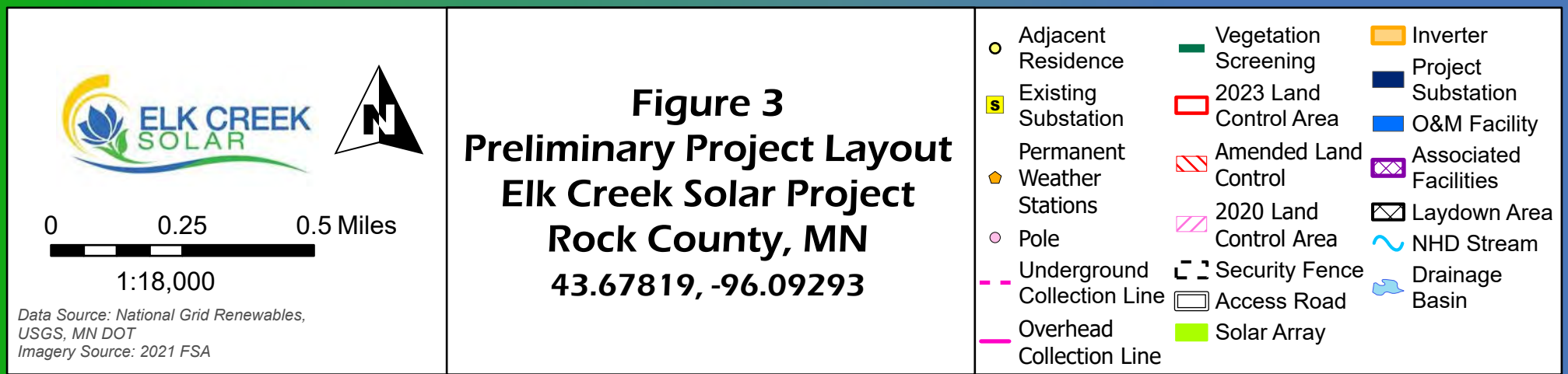
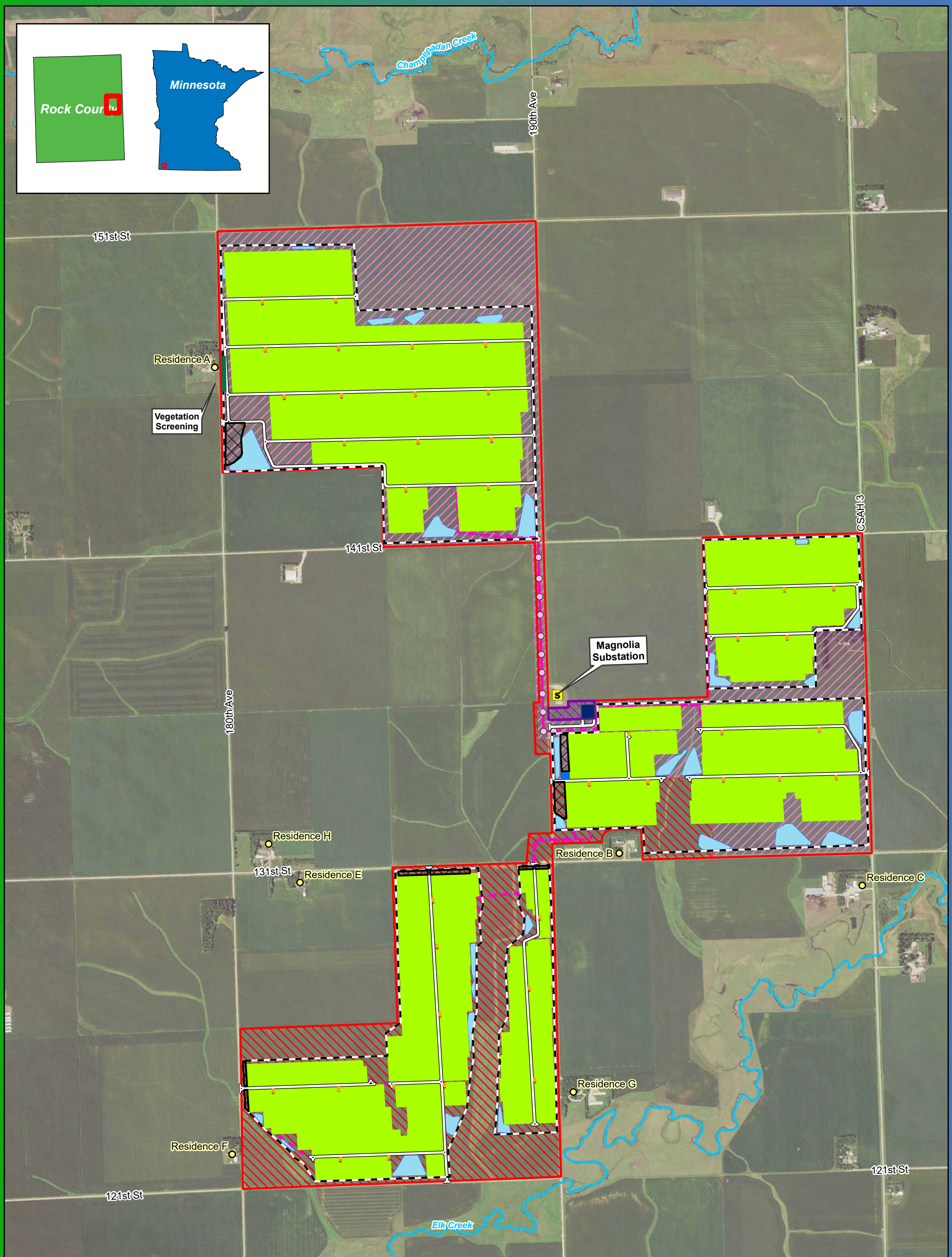
0 1 2 Miles

1:75,000

Figure 1
Project Location
Elk Creek Solar Project
Rock County, MN
43.67819, -96.09293



- | | |
|------------------------|------------------|
| Existing Substation | City/Town |
| 2023 Land Control Area | Township |
| Amended Land Control | County Boundary |
| 2020 Land Control Area | NHD Named Stream |
| | Railroad |







Note: The configuration of the substation and O&M building is preliminary and subject to change with final engineering.



0250500 Feet

1:5,500

Data Source: National Grid Renewables,
USGS, MN DOT

Imagery Source: 2021 FSA

Figure 4a

Preliminary Project Layout

Elk Creek Solar Project

Rock County, MN

43.67819, -96.09293

○ Adjacent Residence

■ Existing Substation

● Permanent Weather Stations

○ Pole

--- Underground Collection Line

— Overhead Collection Line

— Vegetation Screening

▨ 2020 Land Control Area

▨ Amended Land Control

▨ 2023 Land Control Area

▨ Security Fence

▨ Access Road

■ Solar Array

■ Inverter

■ Project Substation

■ O&M Facility

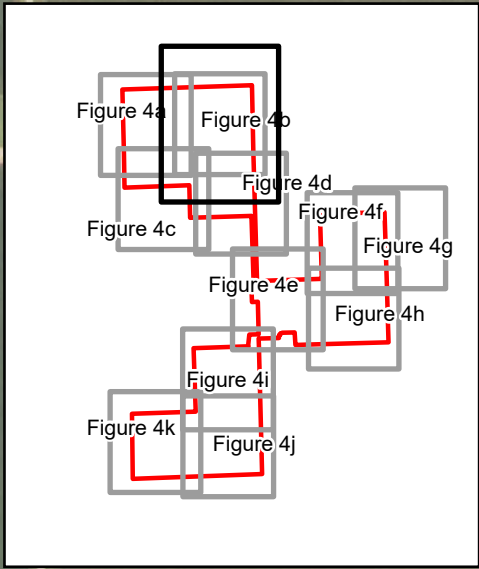
▨ Associated Facilities



▨ Laydown Area

~ NHD Stream

~ Drainage Basin

Date: 5/30/2023





0250500 Feet

1:5,500



Data Source: National Grid Renewables,
USGS, MN DOT

Imagery Source: 2021 FSA

Figure 4b
Preliminary Project Layout
Elk Creek Solar Project
Rock County, MN
43.67819, -96.09293

- | | | |
|---------------------------------|--------------------------|-------------------------|
| ○ Adjacent Residence | ■ Vegetation Screening | ■ Inverter |
| ■ Existing Substation | ■ 2020 Land Control Area | ■ Project Substation |
| ■ Permanent Weather Stations | ■ Amended Land Control | ■ O&M Facility |
| ○ Pole | ■ 2023 Land Control Area | ■ Associated Facilities |
| --- Underground Collection Line | ■ Security Fence | ■ Laydown Area |
| --- Overhead Collection Line | ■ Access Road | ■ NHD Stream |
| | ■ Solar Array | ■ Drainage Basin |





0250500 Feet

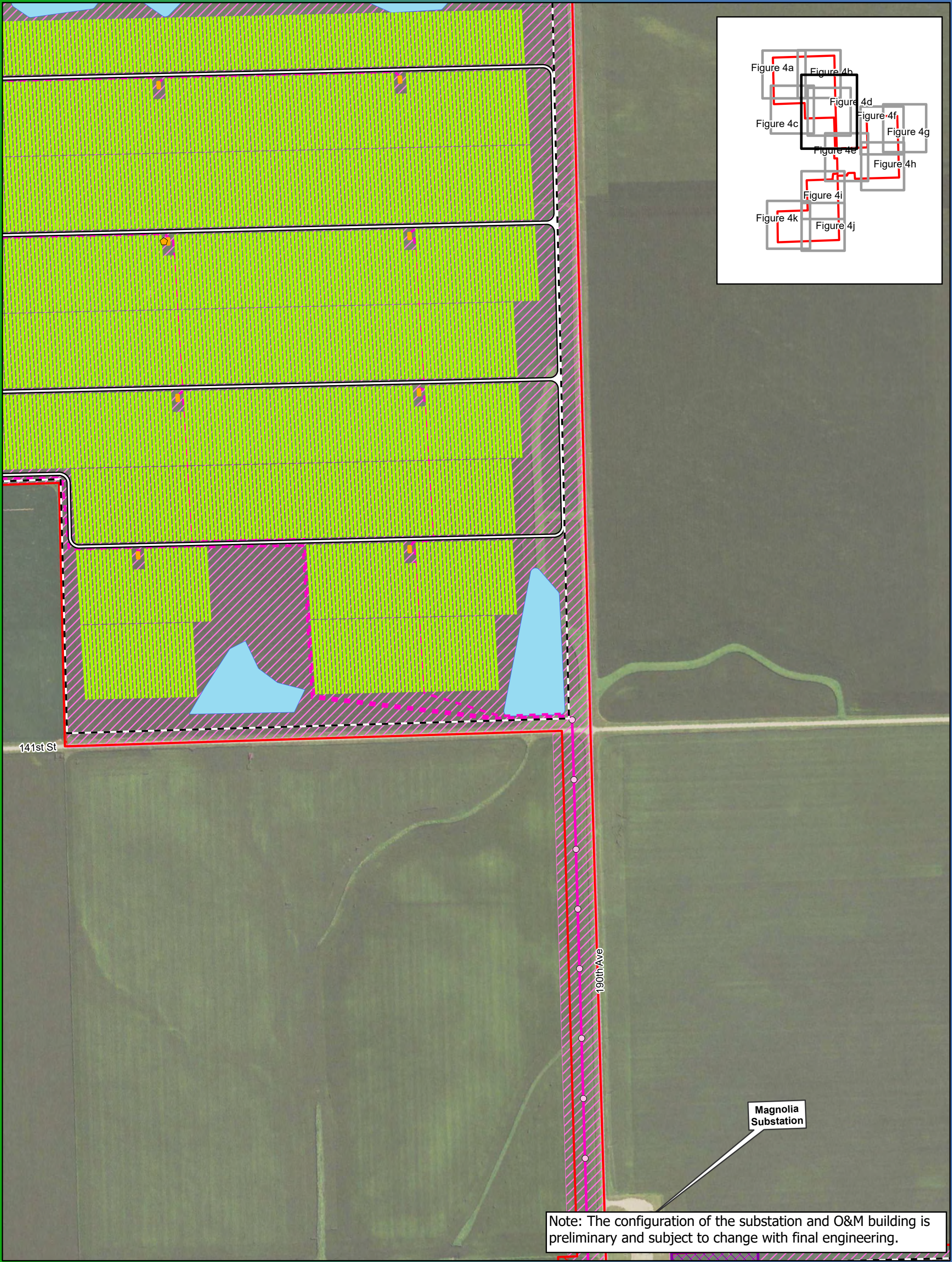
1:5,500

Data Source: National Grid Renewables,
USGS, MN DOT



Imagery Source: 2021 FSA

Figure 4c
Preliminary Project Layout
Elk Creek Solar Project
Rock County, MN
43.67819, -96.09293

- | | | |
|-------------------------------|--------------------------|-------------------------|
| ● Adjacent Residence | — Vegetation Screening | ■ Inverter |
| ■ Existing Substation | ▨ 2020 Land Control Area | ■ Project Substation |
| ● Permanent Weather Stations | ▨ Amended Land Control | ■ O&M Facility |
| ● Pole | ▨ 2023 Land Control Area | ▨ Associated Facilities |
| — Underground Collection Line | ▨ Security Fence | ▨ Laydown Area |
| — Overhead Collection Line | ▨ Access Road | ~ NHD Stream |
| | ■ Solar Array | ■ Drainage Basin |



Note: The configuration of the substation and O&M building is preliminary and subject to change with final engineering.



0250500 Feet

1:5,500

Data Source: National Grid Renewables,
USGS, MN DOT

Imagery Source: 2021 FSA

Figure 4d

Preliminary Project Layout

Elk Creek Solar Project

Rock County, MN

43.67819, -96.09293

○

Adjacent Residence

S

Existing Substation

⬢

Permanent Weather Stations

●

Pole

Underground Collection Line

Overhead Collection Line

Vegetation Screening

2020 Land Control Area

Amended Land Control

2023 Land Control Area

Security Fence

Access Road

Solar Array

⬢

Inverter

⬢

Project Substation

⬢

O&M Facility

⬢

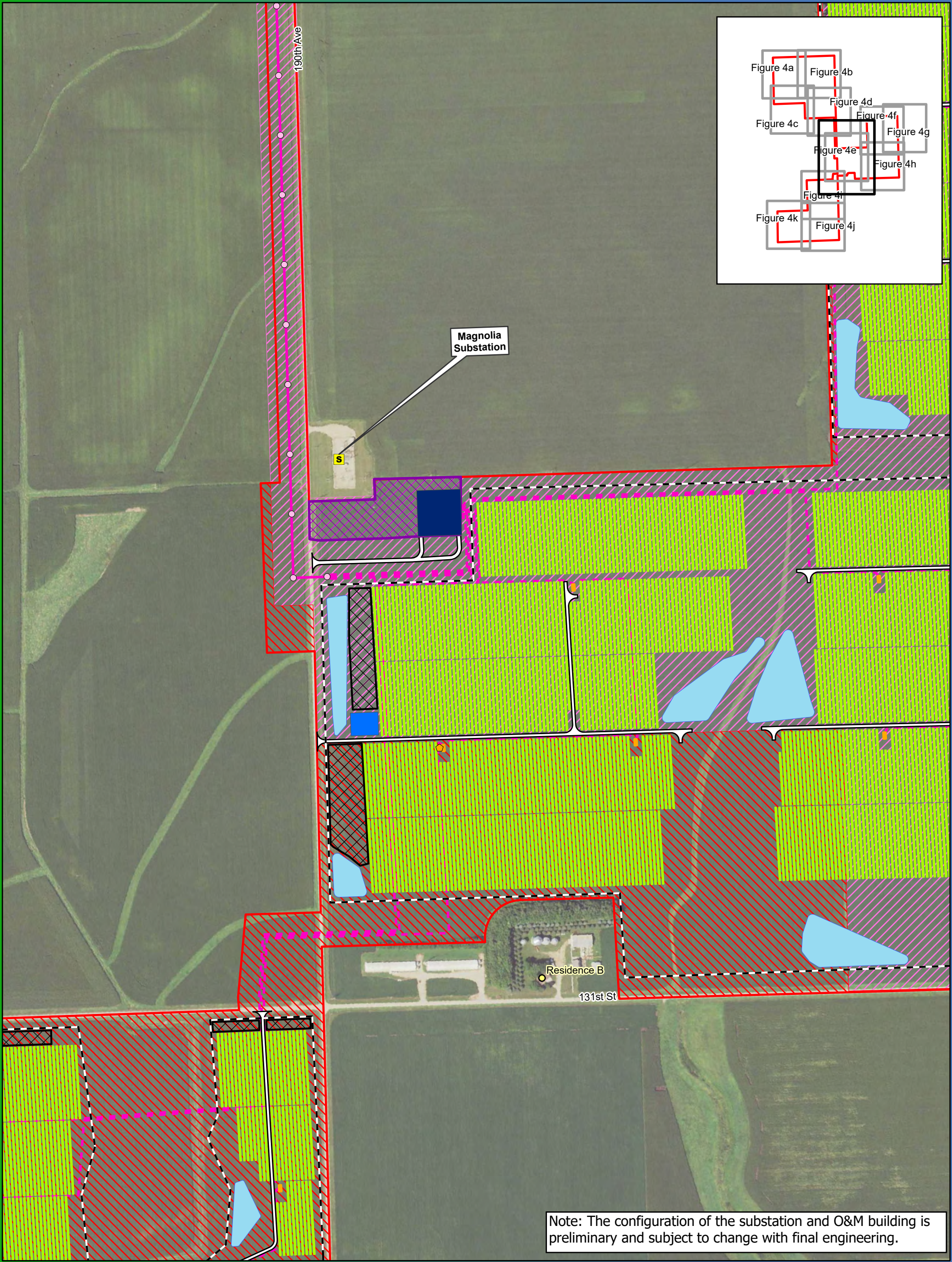
Associated Facilities

⬢

Laydown Area

NHD Stream

Drainage Basin



Note: The configuration of the substation and O&M building is preliminary and subject to change with final engineering.

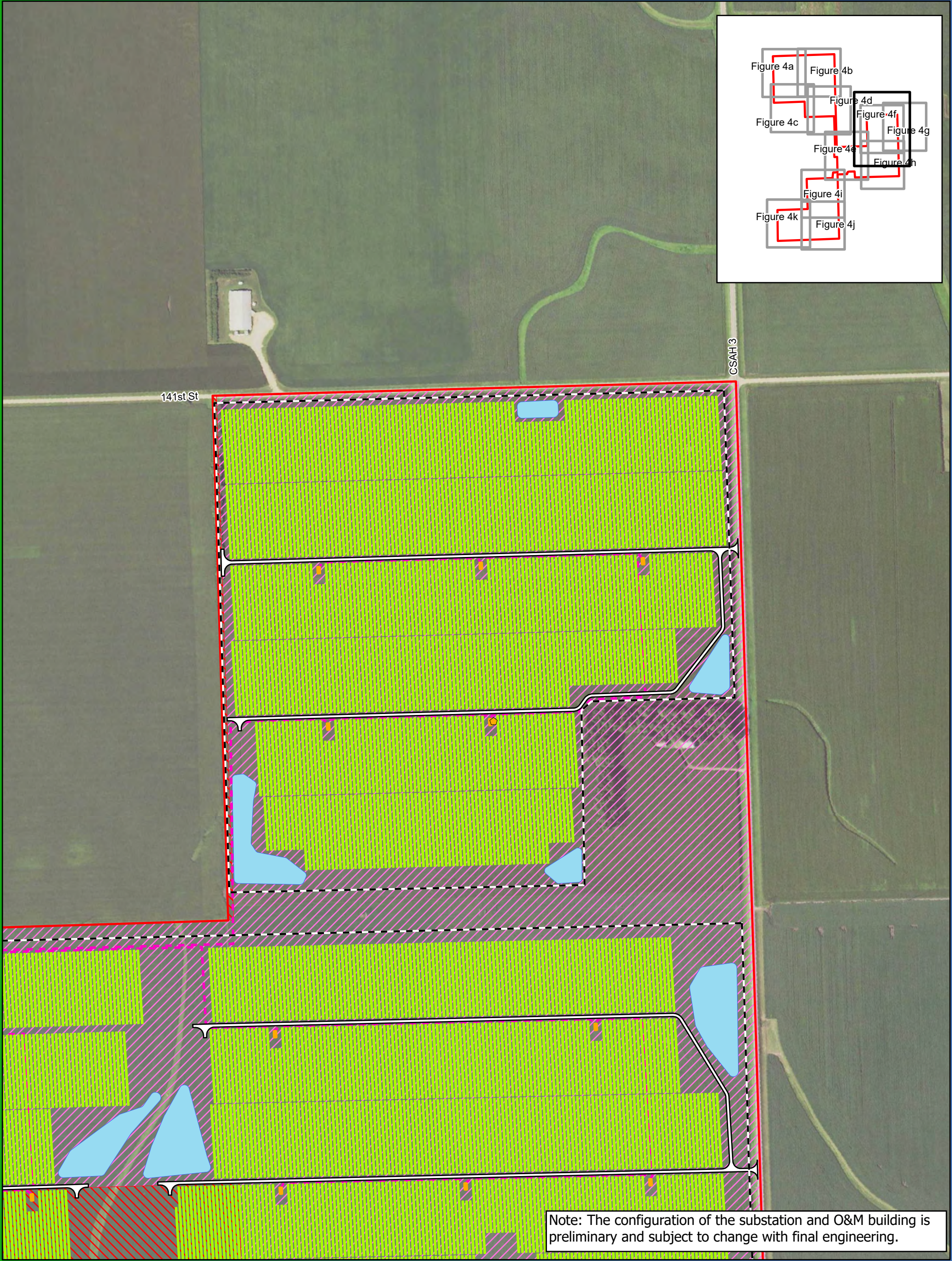




0 250 500 Feet
1:5,500

Data Source: National Grid Renewables,
USGS, MN DOT
Imagery Source: 2021 FSA

Figure 4e
Preliminary Project Layout
Elk Creek Solar Project
Rock County, MN
43.67819, -96.09293

- | | | |
|-------------------------------|--------------------------|-------------------------|
| ○ Adjacent Residence | — Vegetation Screening | □ Inverter |
| ■ Existing Substation | — 2020 Land Control Area | ■ Project Substation |
| ● Permanent Weather Stations | — Amended Land Control | ■ O&M Facility |
| ● Pole | — 2023 Land Control Area | ■ Associated Facilities |
| — Underground Collection Line | — Security Fence | ■ Laydown Area |
| — Overhead Collection Line | — Access Road | — NHD Stream |
| | — Solar Array | — Drainage Basin |





0250500 Feet

1:5,500

Data Source: National Grid Renewables,
USGS, MN DOT

Imagery Source: 2021 FSA

Figure 4f

Preliminary Project Layout

Elk Creek Solar Project

Rock County, MN

43.67819, -96.09293

○ Adjacent Residence

■ Existing Substation

● Permanent Weather Stations

○ Pole

--- Underground Collection Line

--- Overhead Collection Line

■ Vegetation Screening

■ 2020 Land Control Area

■ Amended Land Control

■ 2023 Land Control Area

■ Security Fence

■ Access Road

■ Solar Array

■ Inverter

■ Project Substation

■ O&M Facility

■ Associated Facilities



■ Laydown Area

■ NHD Stream

■ Drainage Basin

Date: 5/30/2023





0250500 Feet

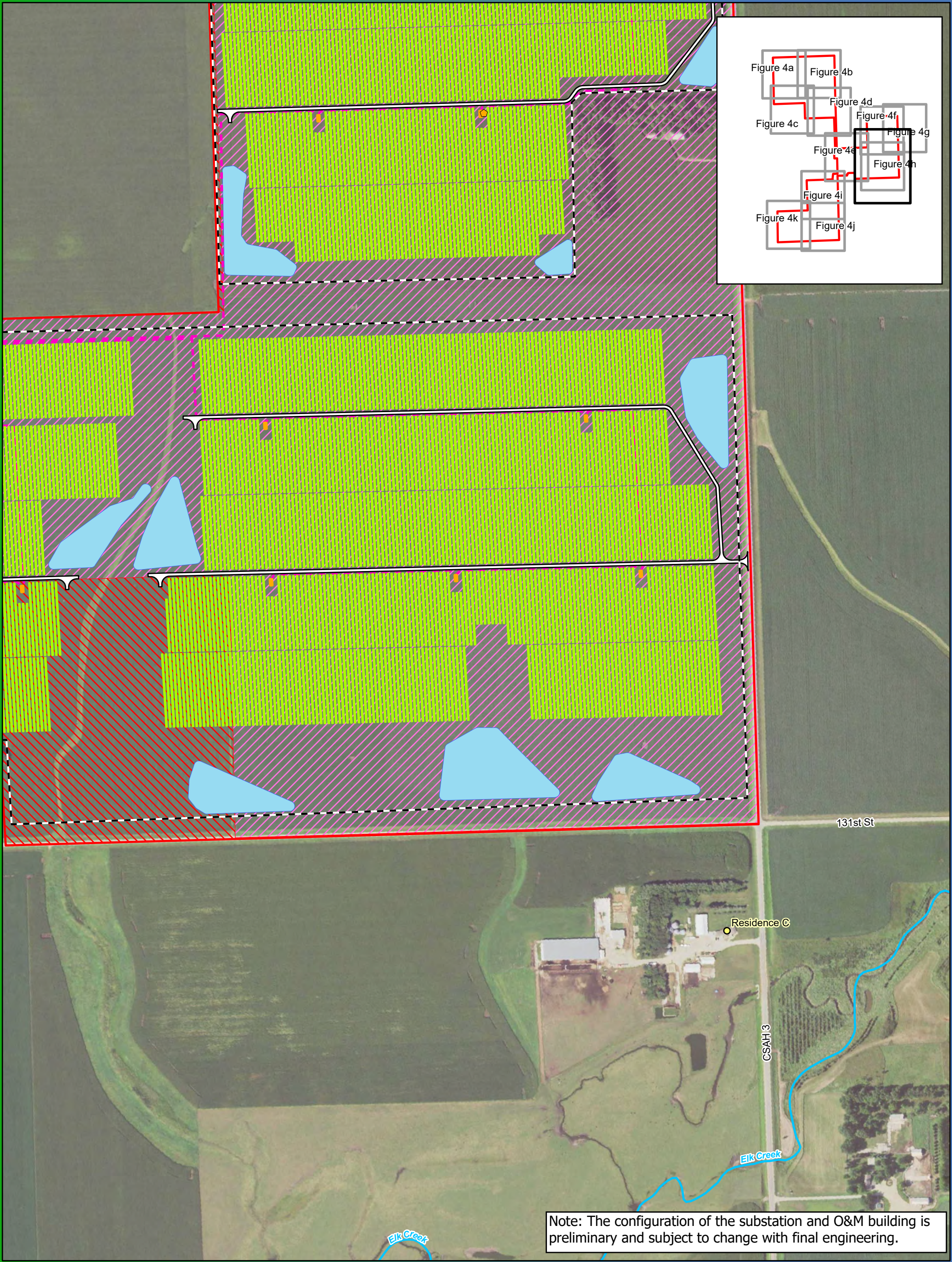
1:5,500

Data Source: National Grid Renewables,
USGS, MN DOT

Imagery Source: 2021 FSA

Figure 4g
Preliminary Project Layout
Elk Creek Solar Project
Rock County, MN
43.67819, -96.09293

- | | | |
|---------------------------------|--------------------------|-------------------------|
| ● Adjacent Residence | ■ Vegetation Screening | ■ Inverter |
| ■ Existing Substation | ■ 2020 Land Control Area | ■ Project Substation |
| ■ Permanent Weather Stations | ■ Amended Land Control | ■ O&M Facility |
| ● Pole | ■ 2023 Land Control Area | ■ Associated Facilities |
| --- Underground Collection Line | ■ Security Fence | ■ Laydown Area |
| --- Overhead Collection Line | ■ Access Road | ■ NHD Stream |
| | ■ Solar Array | ■ Drainage Basin |



Note: The configuration of the substation and O&M building is preliminary and subject to change with final engineering.





0 250 500 Feet
1:5,500

Data Source: National Grid Renewables,
USGS, MN DOT
Imagery Source: 2021 FSA

Figure 4h
Preliminary Project Layout
Elk Creek Solar Project
Rock County, MN
43.67819, -96.09293

- | | | |
|-------------------------------|--------------------------|-------------------------|
| ○ Adjacent Residence | — Vegetation Screening | ■ Inverter |
| ■ Existing Substation | — 2020 Land Control Area | ■ Project Substation |
| ● Permanent Weather Stations | — Amended Land Control | ■ O&M Facility |
| ○ Pole | — 2023 Land Control Area | ■ Associated Facilities |
| — Underground Collection Line | — Security Fence | ■ Laydown Area |
| — Overhead Collection Line | — Access Road | — NHD Stream |
| | — Solar Array | — Drainage Basin |





0250500 Feet

1:5,500

Data Source: National Grid Renewables,
USGS, MN DOT

Imagery Source: 2021 FSA

Figure 4i

Preliminary Project Layout

Elk Creek Solar Project

Rock County, MN

43.67819, -96.09293

○ Adjacent Residence

■ Existing Substation

● Permanent Weather Stations

○ Pole

--- Underground Collection Line

--- Overhead Collection Line

■ Vegetation Screening

■ 2020 Land Control Area

■ Amended Land Control

■ 2023 Land Control Area

■ Security Fence

■ Access Road

■ Solar Array

■ Inverter

■ Project Substation

■ O&M Facility

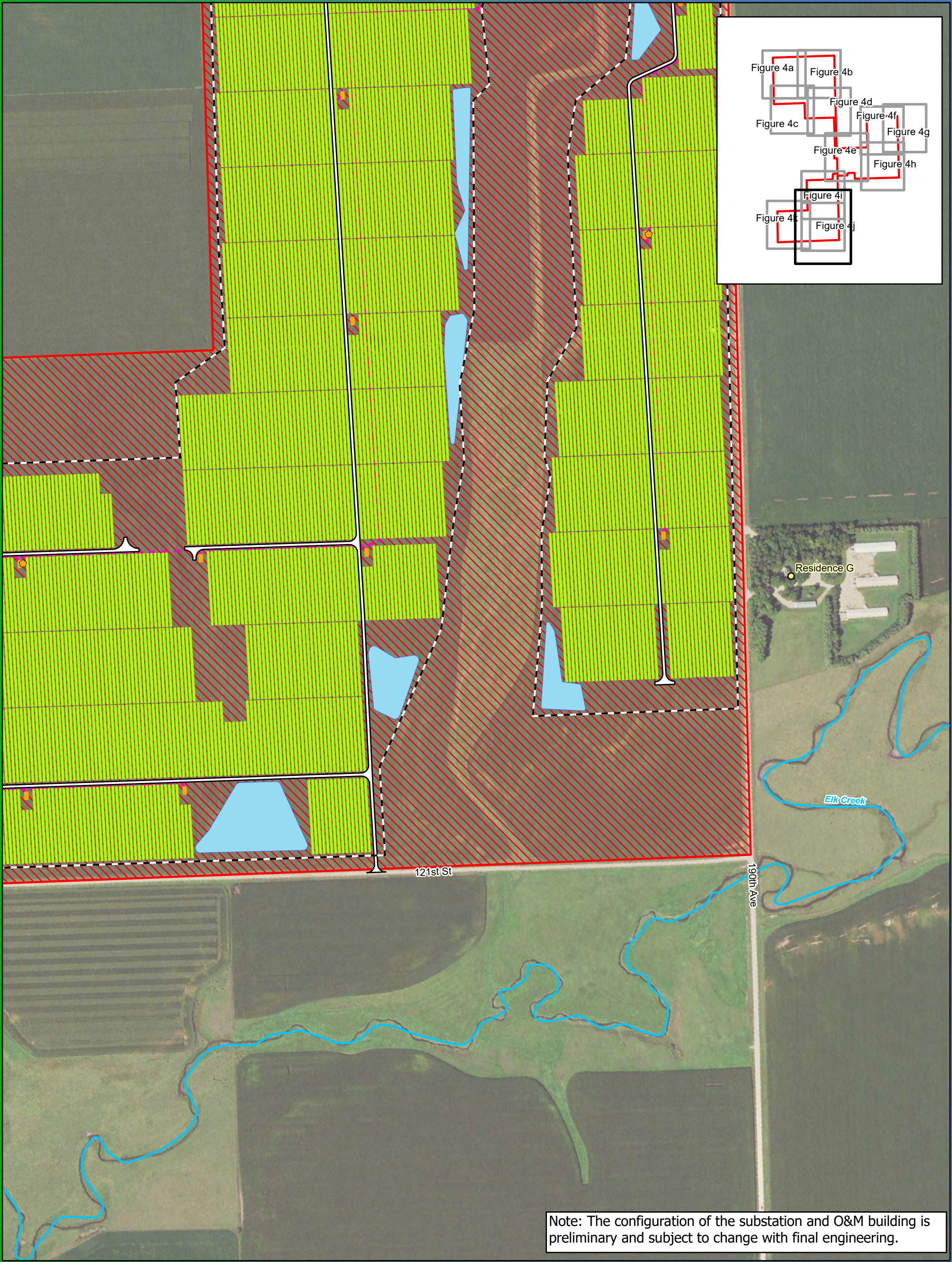
■ Associated Facilities

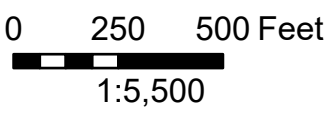


■ Laydown Area

■ NHD Stream

■ Drainage Basin

Date: 5/30/2023





Data Source: National Grid Renewables,
USGS, MN DOT
Imagery Source: 2021 FSA

Figure 4j
Preliminary Project Layout
Elk Creek Solar Project
Rock County, MN
43.67819, -96.09293

- | | | |
|---------------------------------|--------------------------|-------------------------|
| ○ Adjacent Residence | ■ Vegetation Screening | ■ Inverter |
| ■ Existing Substation | ■ 2020 Land Control Area | ■ Project Substation |
| ■ Permanent Weather Stations | ■ Amended Land Control | ■ O&M Facility |
| ○ Pole | ■ 2023 Land Control Area | ■ Associated Facilities |
| --- Underground Collection Line | ■ Security Fence | ■ Laydown Area |
| --- Overhead Collection Line | ■ Access Road | ■ NHD Stream |
| | ■ Solar Array | ■ Drainage Basin |

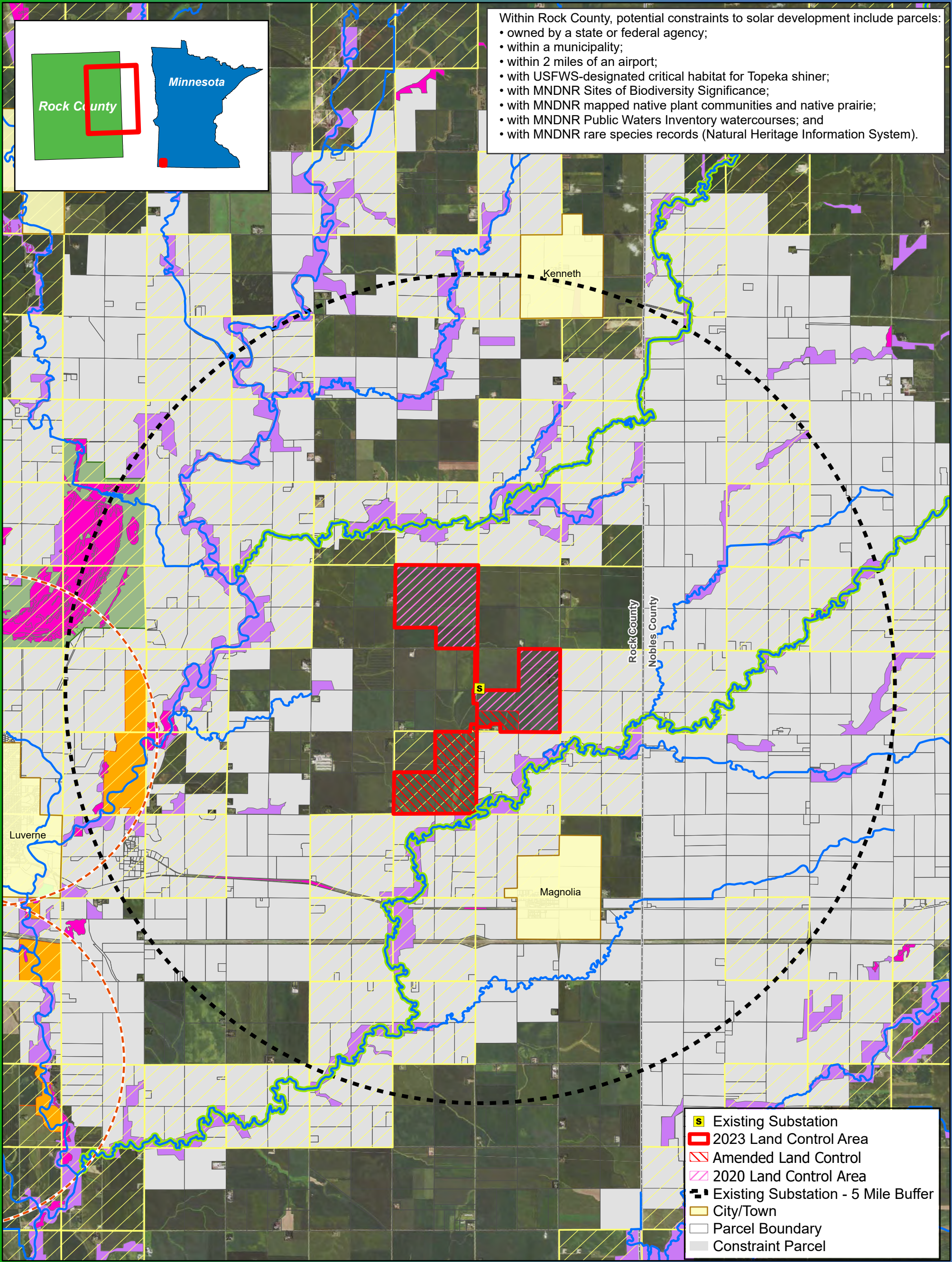


0 250 500 Feet
1:5,500

Data Source: National Grid Renewables,
USGS, MN DOT
Imagery Source: 2021 FSA

Figure 4k Preliminary Project Layout Elk Creek Solar Project Rock County, MN 43.67819, -96.09293

- | | | |
|---------------------------------|------------------------|-------------------------|
| ○ Adjacent Residence | Vegetation Screening | Orange Inverter |
| ■ Existing Substation | 2020 Land Control Area | ■ Project Substation |
| Permanent Weather Stations | Amended Land Control | ■ O&M Facility |
| ● Pole | 2023 Land Control Area | ■ Associated Facilities |
| --- Underground Collection Line | Security Fence | ■ Laydown Area |
| --- Overhead Collection Line | Access Road | ~ NHD Stream |
| | Solar Array | ~ Drainage Basin |





1:69,545

Data Source: National Grid Renewables, USGS, US Census, MN DOT, MDNR, Rock County, Nobles County

Imagery Source: 2021 FSA

Figure 5

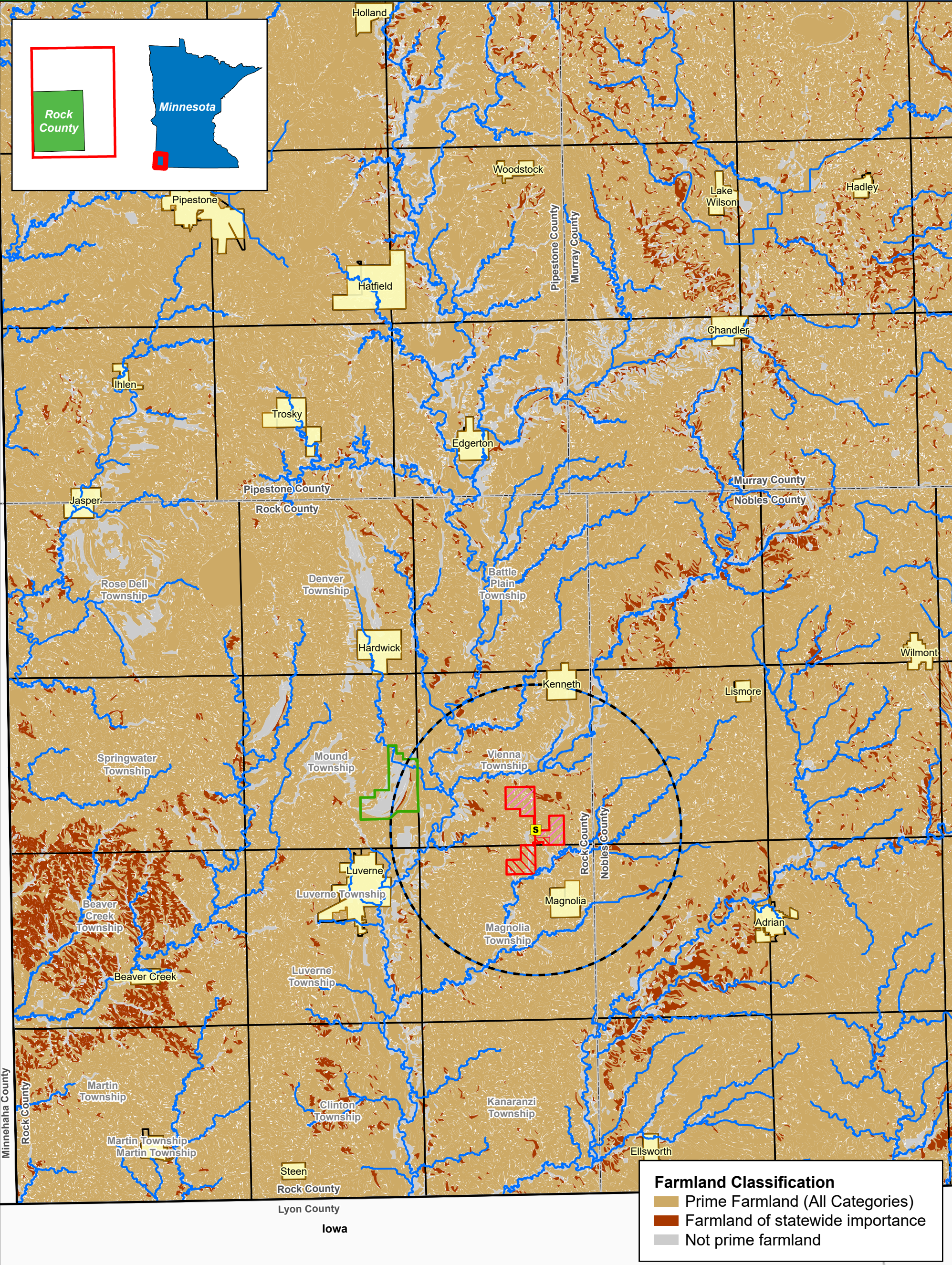
Potential Solar Development Constraints



Elk Creek Solar Project

Rock County, MN

43.67819, -96.09293

- Public Waters Inventory (PWI)
- NHIS Record within Section
- Sites of biodiversity Significance
- Blue Mounds State Park
- Wildlife Management Area (WMA)
- Aquatic Management Area (AMA)
- Native Plant Community/Native Prairie
- Critical Habitat
- Airport - Two Mile Buffer





02.55 Miles

1:200,000

Data Source: National Grid Renewables, USGS, US Census, MN DOT, MDNR, USDA

Figure 6
Regional Prime Farmland
Elk Creek Solar Project
Rock County, MN
43.67819, -96.09293

- Existing Substation
- 2023 Land Control Area
- Amended Land Control
- 2020 Land Control Area
- Existing Substation - Five Mile Buffer
- Public Water Inventory (PWI)
- Blue Mounds State Park
- City/Town
- Civil Township
- County Boundary