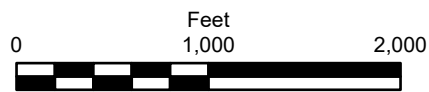
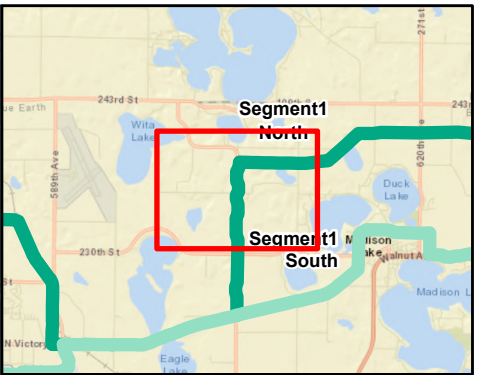
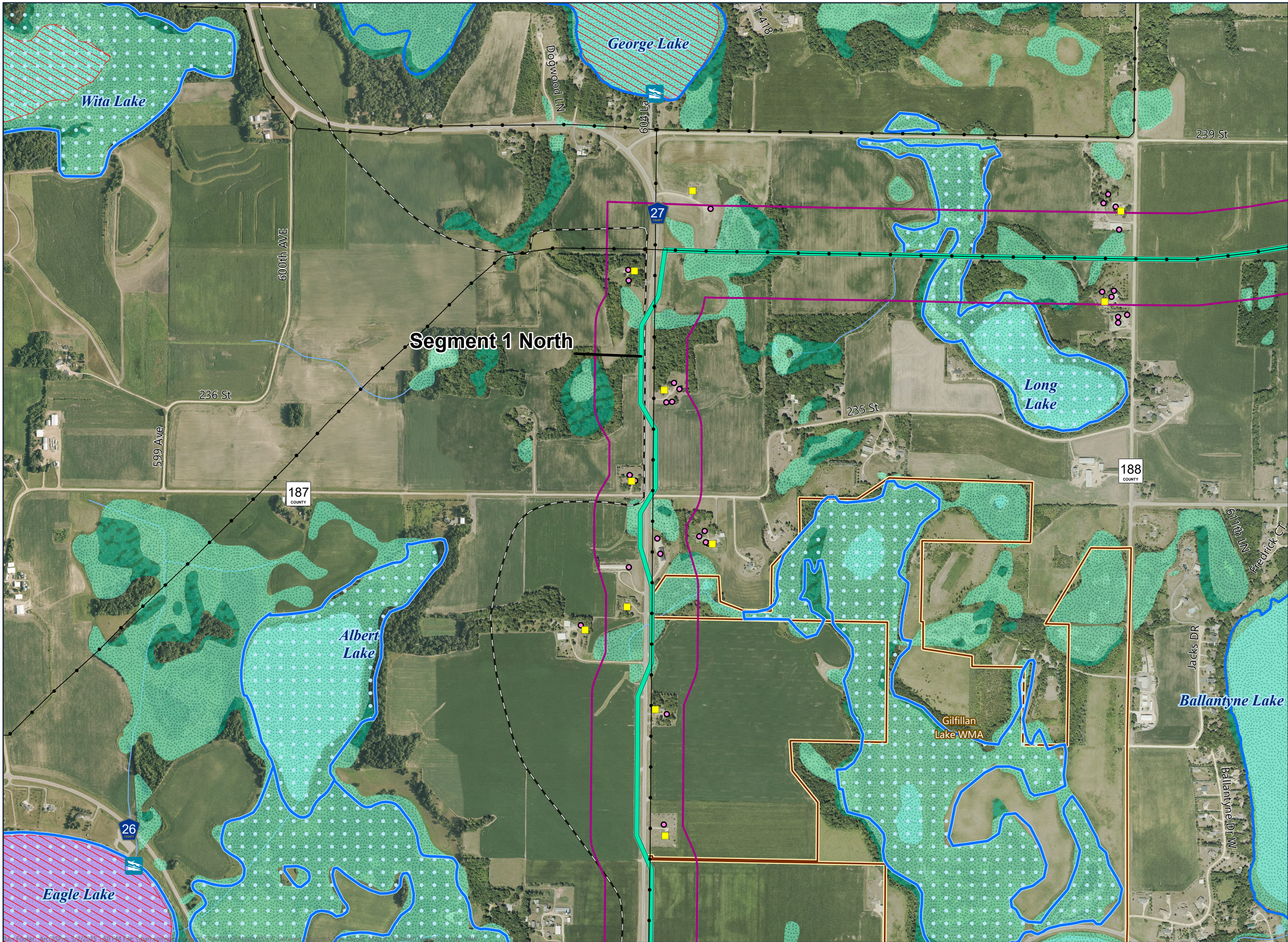


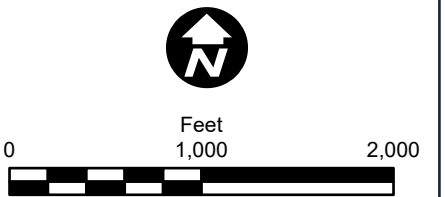
- Segment 1 North
- Segment 1 South
- Other Segments
- Proposed Route Width
- Carry-In
- Trailer Launch
- Non-Residential Structure
- Residence Location
- Existing Transmission Line
- State Trail
- NHD Watercourse
- Snowmobile Trail
- PWI Waterbody
- MPCA Impaired Waterbody
- Shallow Wildlife Lake
- Forested Wetland
- Non-Forested Wetland
- NHD Waterbody
- Wildlife Management Area
- National Wildlife Refuge
- Other Forest Land
- Lakes of Biological Significance**
 - Moderate Significance



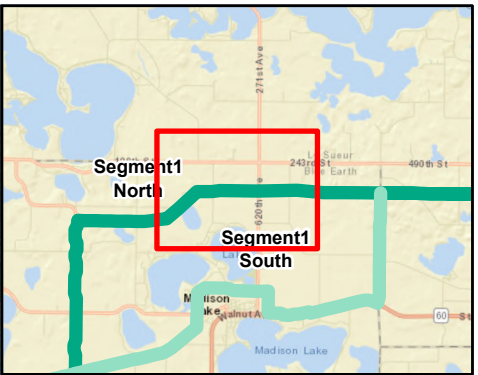
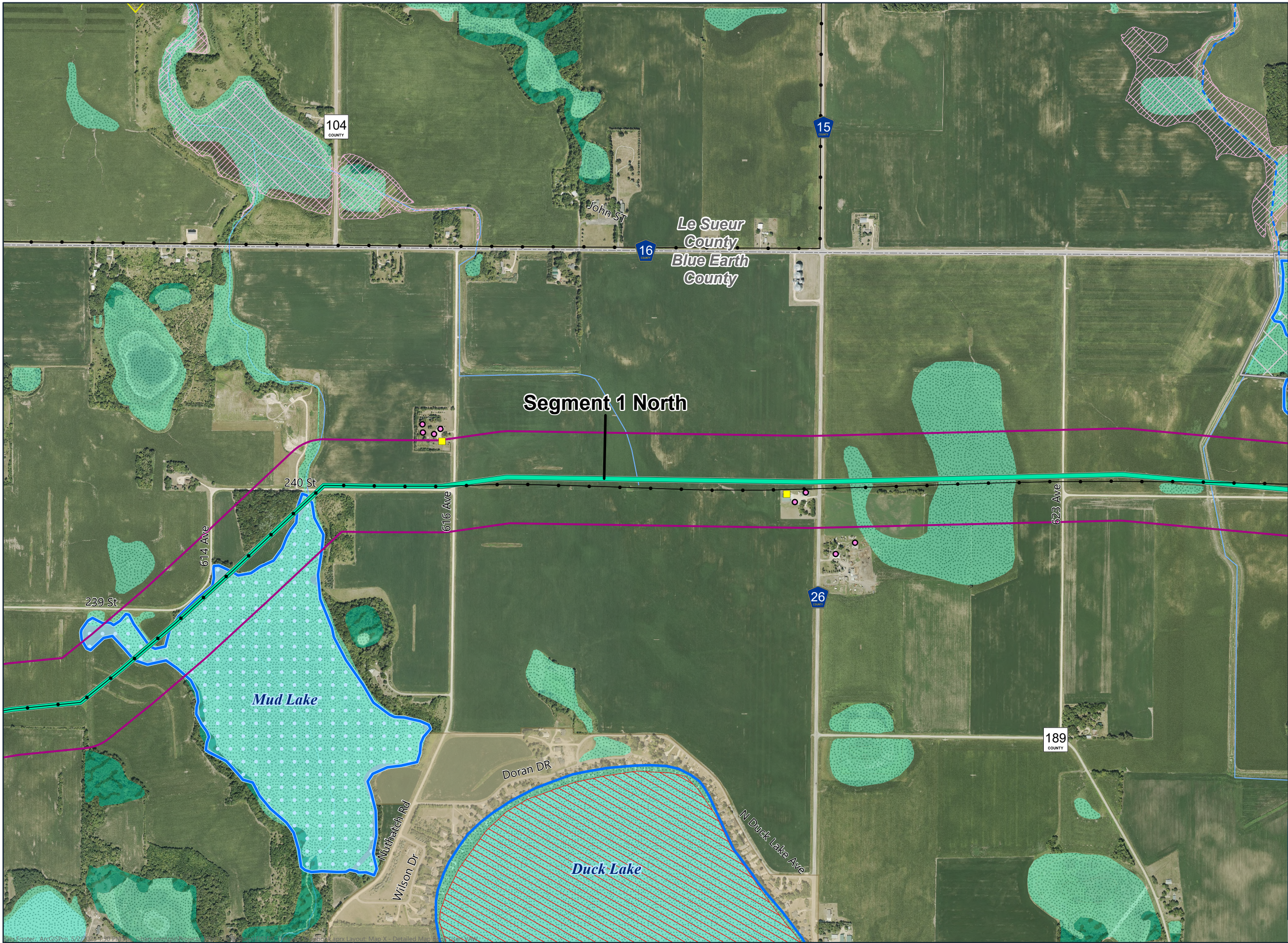
**SEGMENT 1
DETAILED MAPBOOK**
Mankato - Mississippi River
Transmission Line Project



- Segment 1 North
- Other Segments
- Proposed Route Width
- Trailer Launch
- Non-Residential Structure
- Residence Location
- Existing Transmission Line
- NHD Watercourse
- Snowmobile Trail
- PWI Waterbody
- MPCA Impaired Waterbody
- Shallow Wildlife Lake
- Forested Wetland
- Non-Forested Wetland
- NHD Waterbody
- Wildlife Management Area
- National Wildlife Refuge
- Lakes of Biological Significance
- Moderate Significance



**SEGMENT 1
DETAILED MAPBOOK**
Mankato - Mississippi River
Transmission Line Project



- Segment 1 North
- Other Segments
- Proposed Route Width
- Non-Residential Structure
- Residence Location
- Existing Transmission Line
- NHD Watercourse
- PWI Waterbody
- MPCA Impaired Waterbody
- PWI Watercourse
- Shallow Wildlife Lake
- Forested Wetland
- Non-Forested Wetland
- Floodplains**
- 100-Year Floodplain
- NHD Waterbody
- State Conservation Easements
- National Wildlife Refuge
- Municipal Boundary
- Site of Biodiversity Significance**
- Below Minimum Significance

