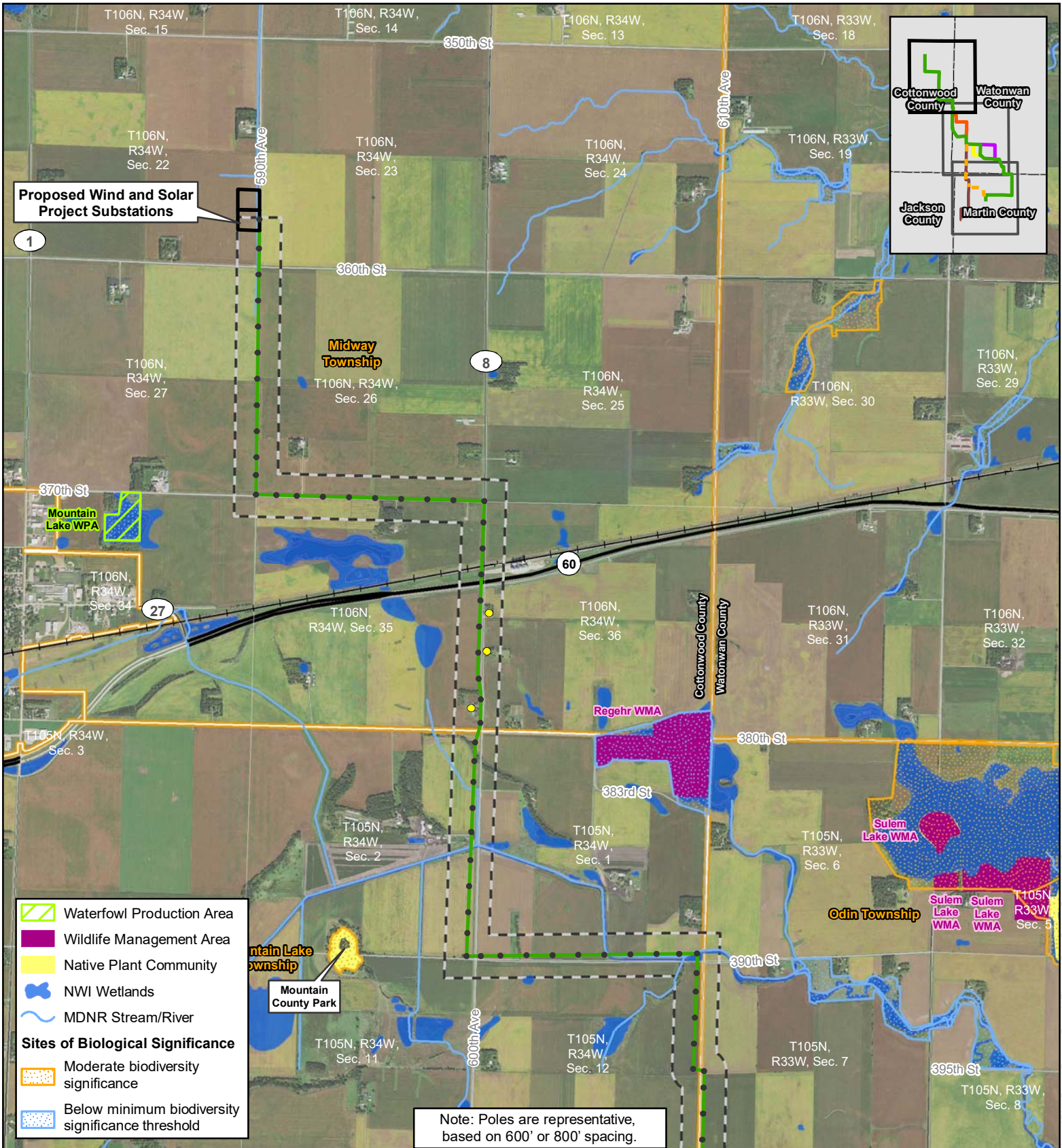


Appendix C

Detailed Route Maps



BIG BEND WIND

0 0.25 0.5 Miles

1:36,000

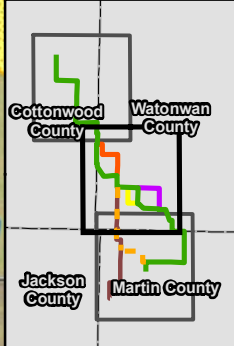
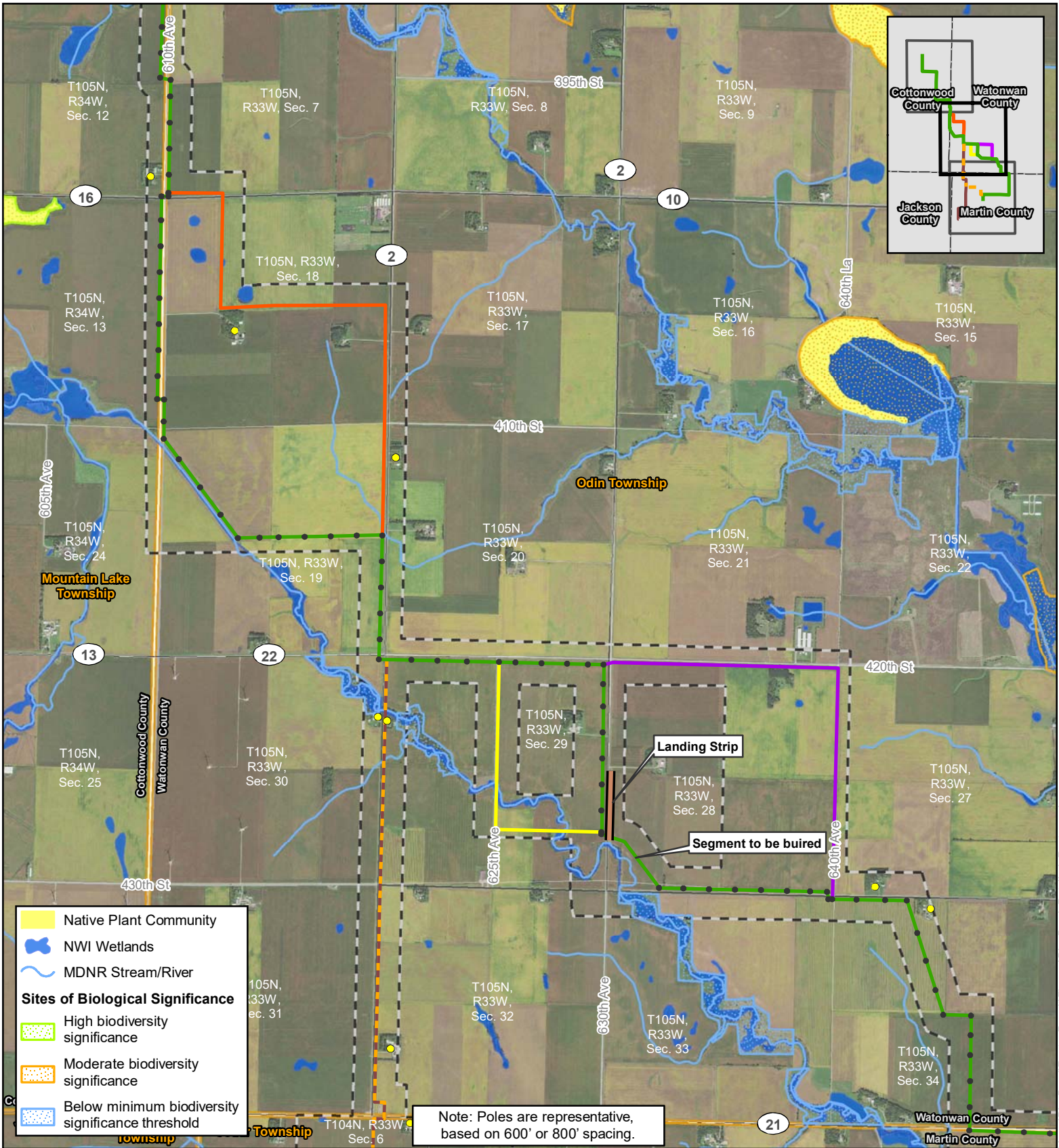
merjent.

For Environmental Review Purposes Only

Detailed Route Maps

Big Bend 161kV Transmission Line Project Cottonwood, Watonwan and Martin Counties, Minnesota

- Transmission Line Pole
- Residence within Route Corridor
- Proposed Route
- Proposed Route Width
- City/Township



- Native Plant Community
- NWI Wetlands
- MDNR Stream/River
- Sites of Biological Significance**
- High biodiversity significance
- Moderate biodiversity significance
- Below minimum biodiversity significance threshold

Note: Poles are representative, based on 600' or 800' spacing.

0 0.25 0.5 Miles

1:36,000

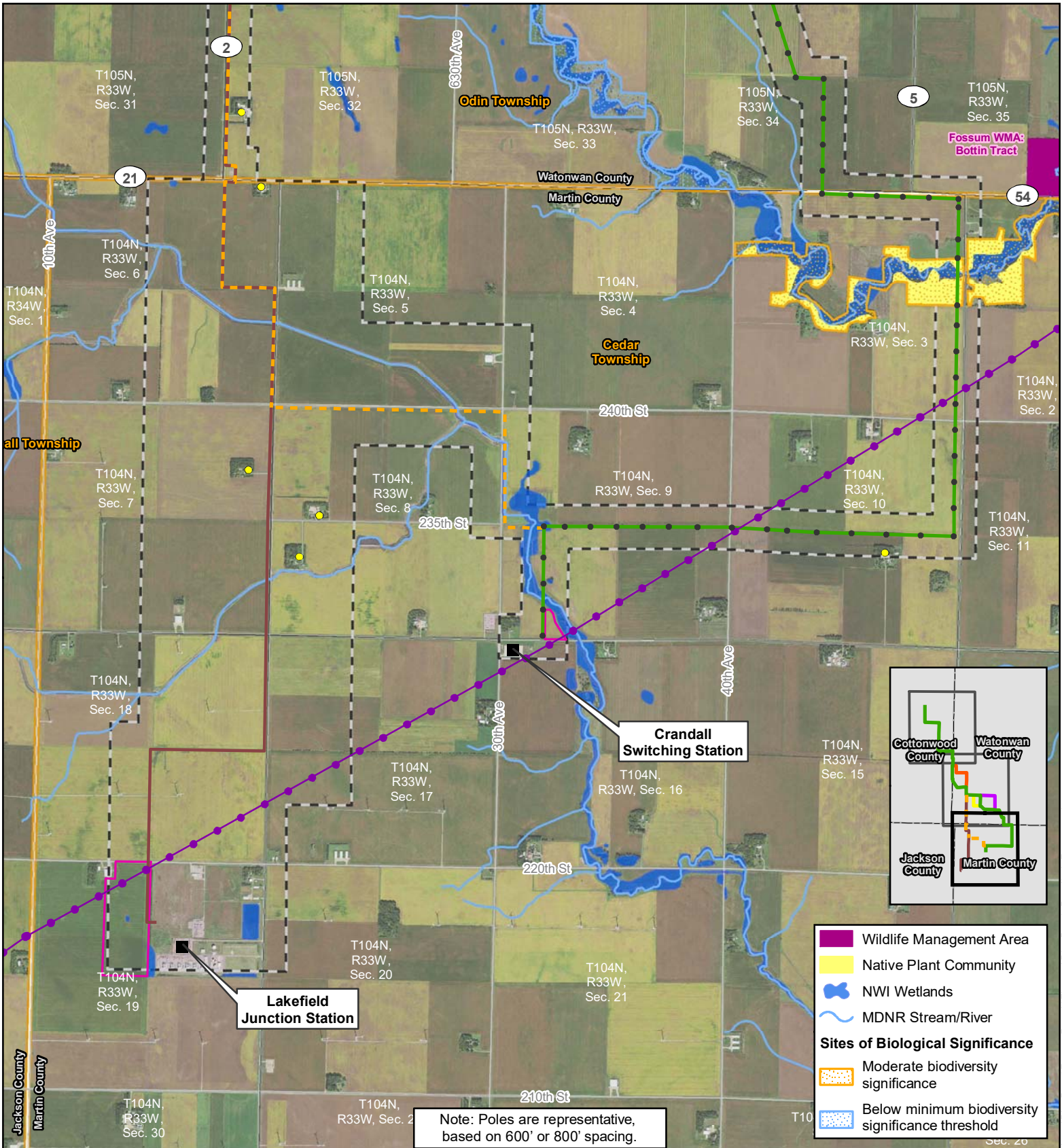
For Environmental Review Purposes Only

Detailed Route Maps

Big Bend 161kV Transmission Line Project Cottonwood, Watonwan and Martin Counties, Minnesota

- Transmission Line Pole
- Residence within Route Corridor
- Proposed Route
- Alternate Purple Segment
- Alternate Red Segment
- Alternate Yellow Segment
- Crandall Alternate Route
- Peaking Plant Alternate Route
- Proposed Route Width
- City/Township

Date: (11/3/2020) Source: Z:\Clients\VA_DVA\pex\big_Bend\Route_Permit\Figures\Big_Bend_Detailed_Route.mxd



0 0.25 0.5 Miles

1:36,000

For Environmental Review Purposes Only

Detailed Route Maps

Big Bend 161kV Transmission Line Project Cottonwood, Watonwan and Martin Counties, Minnesota

Page 3 of 3

- Transmission Line Pole
- Residence within Route Corridor
- Proposed Route
- - - Crandall Alternate Route
- - - Peaking Plant Alternate Route
- - - Proposed Route Width
- - - Proposed Step-up Substation
- - - City/Township
- Existing 345 kV Transmission Line