



- Proposed Alignment
- Proposed 160ft ROW
- Proposed Substation Area
- Commercial
- Residential
- Municipal Boundary
- Parcels
- Lands Administered by the DNR Department of Forestry
- PLS Section Line
- NWI Wetlands
- PWI Basin
- PWI Watercourse
- Barr Wetland Determination
- Eggers & Reed Wetland Types
- Conifer swamp
- Excavated - Shrub carr
- Excavated pond
- Hardwood swamp
- Shallow open water
- Shrub carr
- Wet meadow

- T&E Species*
- Vertebrate Animal
- Community
- Invertebrate Animal
- Vascular Plant
- Nonvascular Plant; Fungus
- Animal Assemblage
- Geologic

- Wetlands: National Wetland Inventory
- T&E Species: *Rare features data included here were provided by the Natural Heritage and Nongame Research Program of the Division of Ecological Services, Minnesota Department of Natural Resources (DNR), and were current as of 05/15/13

- Wetlands: National Wetland Inventory
- T&E Species: *Rare features data included here were provided by the Natural Heritage and Nongame Research Program of the Division of Ecological Services, Minnesota Department of Natural Resources (DNR), and were current as of 05/15/13

- Wetlands: National Wetland Inventory
- T&E Species: *Rare features data included here were provided by the Natural Heritage and Nongame Research Program of the Division of Ecological Services, Minnesota Department of Natural Resources (DNR), and were current as of 05/15/13

- Wetlands: National Wetland Inventory
- T&E Species: *Rare features data included here were provided by the Natural Heritage and Nongame Research Program of the Division of Ecological Services, Minnesota Department of Natural Resources (DNR), and were current as of 05/15/13

- Wetlands: National Wetland Inventory
- T&E Species: *Rare features data included here were provided by the Natural Heritage and Nongame Research Program of the Division of Ecological Services, Minnesota Department of Natural Resources (DNR), and were current as of 05/15/13

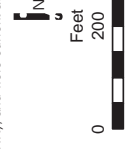
- Wetlands: National Wetland Inventory
- T&E Species: *Rare features data included here were provided by the Natural Heritage and Nongame Research Program of the Division of Ecological Services, Minnesota Department of Natural Resources (DNR), and were current as of 05/15/13

- Wetlands: National Wetland Inventory
- T&E Species: *Rare features data included here were provided by the Natural Heritage and Nongame Research Program of the Division of Ecological Services, Minnesota Department of Natural Resources (DNR), and were current as of 05/15/13

- Wetlands: National Wetland Inventory
- T&E Species: *Rare features data included here were provided by the Natural Heritage and Nongame Research Program of the Division of Ecological Services, Minnesota Department of Natural Resources (DNR), and were current as of 05/15/13

Figure 4 Detailed Route Map

DETAILED MAPS
 Proposed Canisteo 115 kV
 HVTL and Substation
 Minnesota Power
 Itasca County, MN



Source: Esri, DeLorme, USGS, AEX, GeoEye, GeoMapping, AeroGRID, IGN, IGP, and the GIS User Community