

Data Source(s): Westwood (2021); Minnesota NAIIP Imagery (2019); Census Bureau (2019); U.S. Minnesota Geological Survey, Freeborn County; University of Minnesota - Twin Cities, MN DNR (2020).

**Legend**

- Project Area
- Municipal Boundary
- County Boundary
- Major Highway
- ▲ Karst Feature
- Carbonate Minnesota Region Prone to Surface Karst Feature Development

- Carbonate rocks buried under >50 ft of glacially derived insoluble sediments in a humid climate
- Carbonate rocks buried under ≤50 ft of glacially derived insoluble sediments in a humid climate

**Hayward Solar Project**

Freeborn County, Minnesota

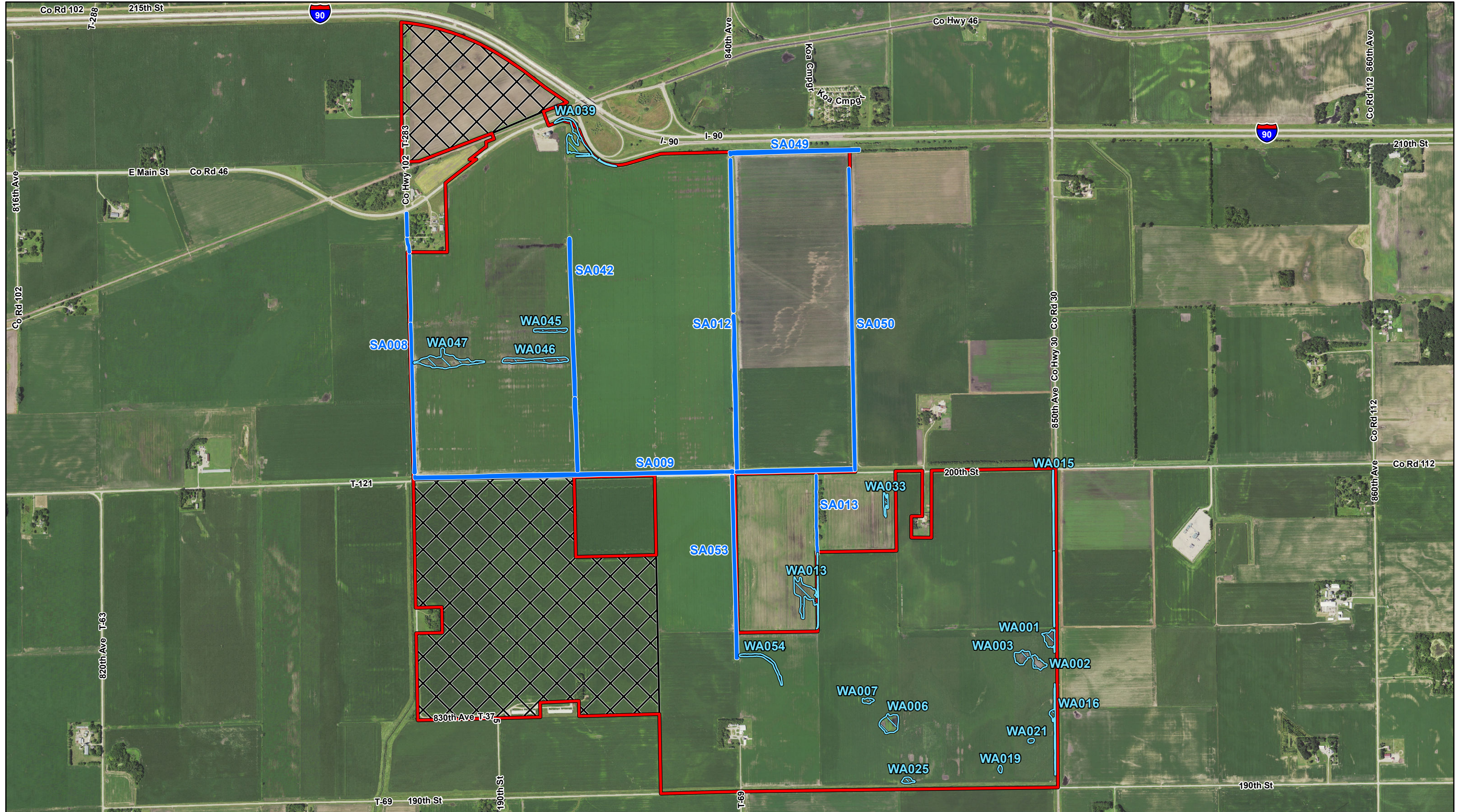
**Karst Features**

**Westwood**

Toll Free (888) 937-5150 westwoodps.com  
Westwood Professional Services, Inc.

Map Document: N:\0026599\_00\GIS\SPA\_Figures\Hayward\_SPA\_Fig14\_KarstFeatures\_210427.mxd, 4/27/2021 6:04:57 PM radevito








Data Source(s): Westwood (2021); Minnesota NAIP Imagery (2019); Census Bureau (2019); Tetratich (2020).

**Legend**

 Project Area

 Area Not Delineated for Wetlands & Waterways (Will be Delineated Spring, 2021)

 Field Delineated Wetland (May, 2020)

 Field Delineated Waterway (May, 2020)



**Hayward Solar Project**

Freeborn County, Minnesota

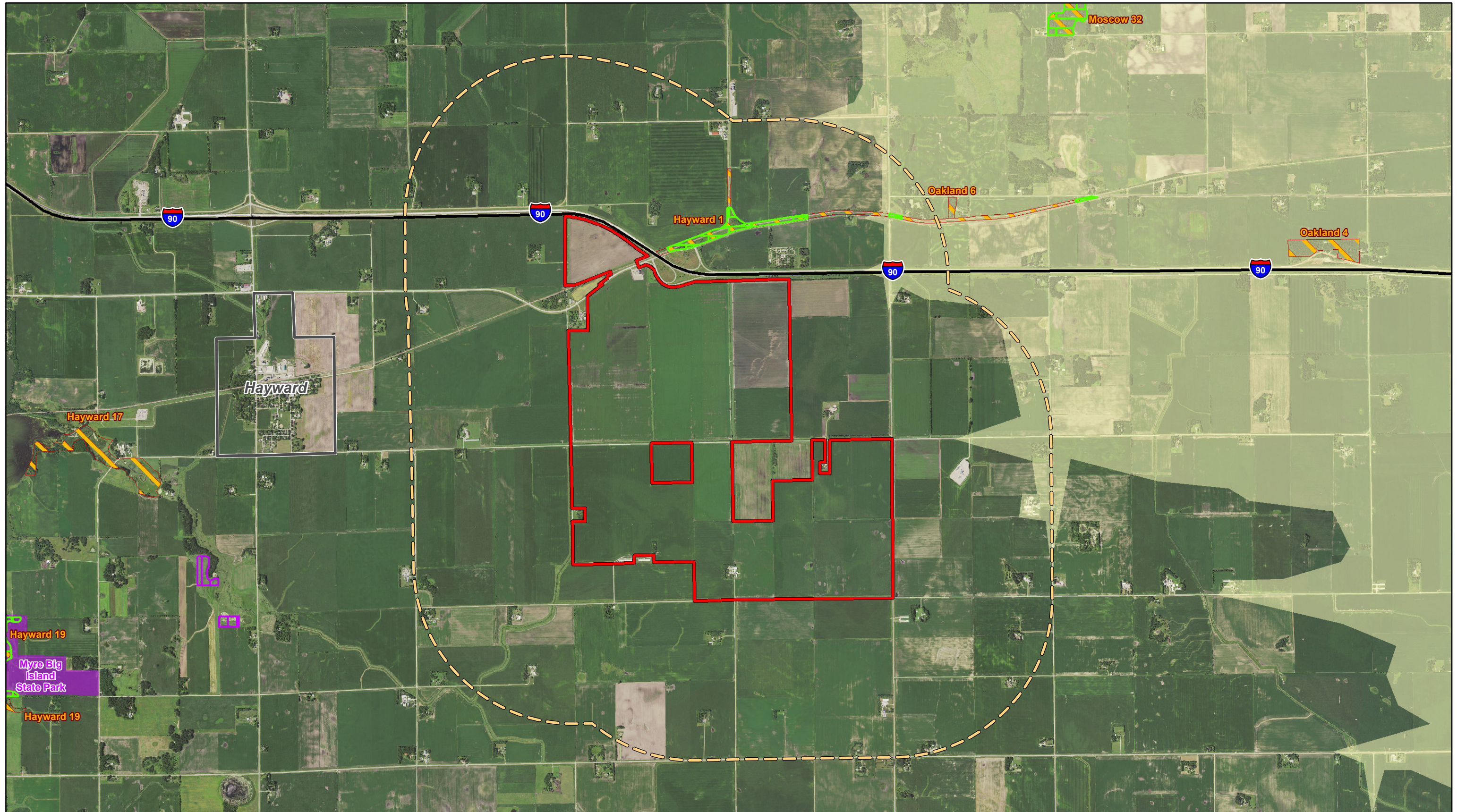
**Delineated Wetlands & Waterways**

FIGURE 15

**Westwood**

Toll Free (888) 937-5150 westwoodps.com  
Westwood Professional Services, Inc.





Data Source(s): Westwood (2021); Minnesota NAIP Imagery (2019); Census Bureau (2019); MNDNR (Various Dates); The Minnesota County Biological Survey, MNDNR, Division of Ecological Resources (2015); NCED and Partners (2016); U.S. Fish and Wildlife Service (Various Dates); U.S. Fish and Wildlife Service (2016); MhDNR (2020); Conservation Biology Institute PAD-US (2016).

**Legend**

- Project Area
- 1-Mile Project Area Buffer
- Municipal Boundary
- Major Road
- Native Plant Community
- MBS Site of Biodiversity Significance
- National Conservation Easement
- Minnesota Wildlife Management Area
- State Park Area
- Rusty Patched Bumble Bee High Potential Zone
- Rusty Patched Bumble Bee Low Potential Zone
- Minnesota Wildlife Management Area
- State Park Area



**Hayward Solar Project**  
Freeborn County, Minnesota

Rare & Unique Natural Resources