




Maps





 Project Site


 Proposed Preliminary Development Area

Contour Lines

 10-foot Contour (Index)

 2-foot Contour (Intermediate)

 NORTH

 300 150 0 300
Feet



Blue Lake Energy
Storage System
Map 1
Topographic Map
City of Shakopee, MN

Service Layer Credits: USA_Topo_Maps: Copyright:© 2013 National Geographic Society, i-cubed
 NADP Imagery: Source: Esri, USDA FSA
 Hybrid Reference Layer (US Edition): Esri Community Maps Contributors, Metropolitan Council, MetroGIS, Three Rivers Park District, © OpenStreetMap, Microsoft, Esri, TomTom, Garmin, SafeGraph, GeoTechnologies, Inc. METINASA, USGS, EPA




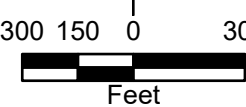
Legend

- Project Site
- Proposed Preliminary Development Area

Contour Lines

- 10-foot Contour (Index)
- 2-foot Contour (Intermediate)

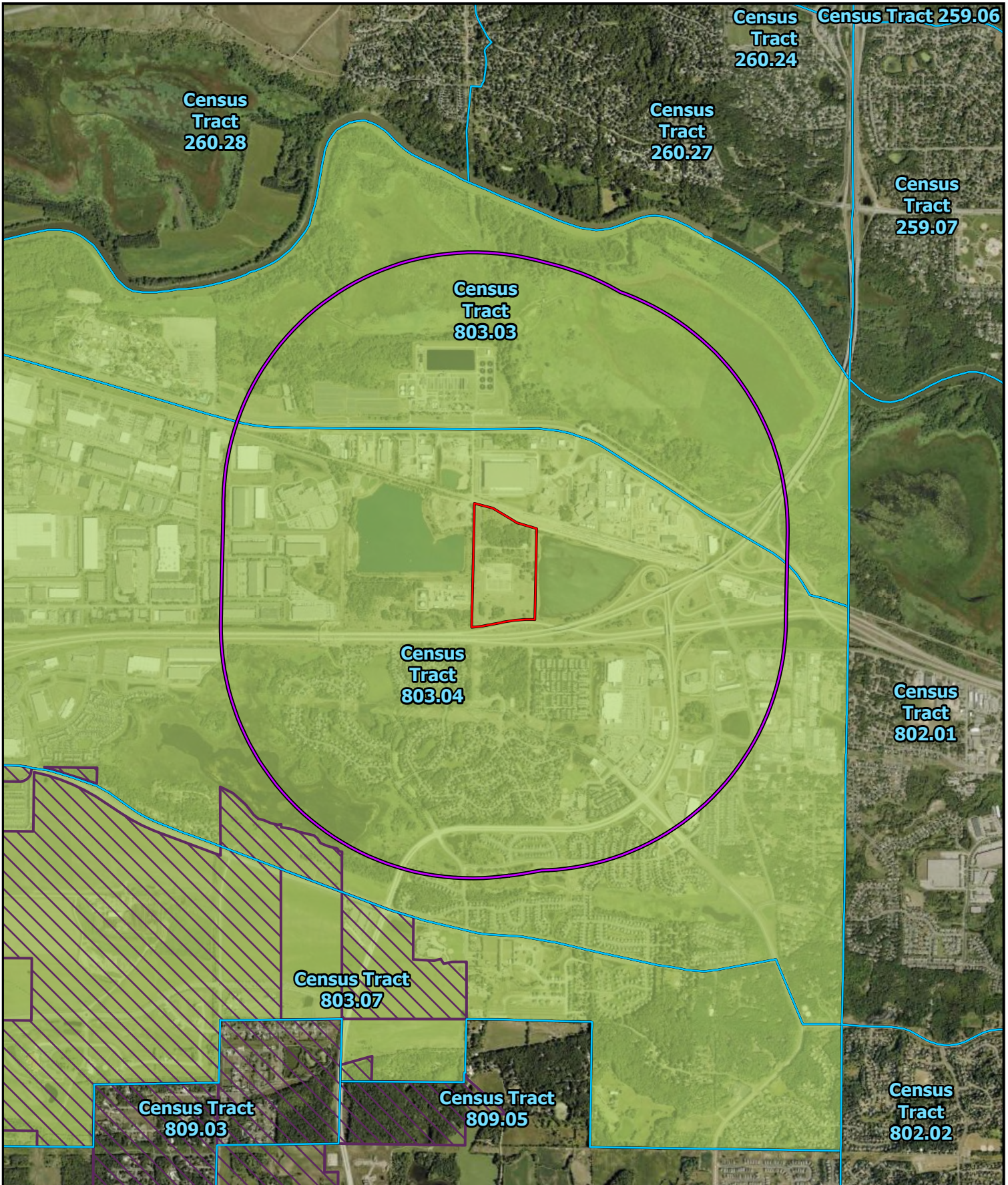

 NORTH


 300 150 0 300
 Feet

**BURNS
MCDONNELL**

**Blue Lake Energy
 Storage System
 Map 2
 Land Ownership &
 Parcel Boundaries
 City of Shakopee, MN**

Service Layer Credits: NAIP Imagery: Source: Esri, USDA FSA World Imagery (Firefly): Source: Esri, Maxar, Earthstar Geographics, and the GIS User Community



Project Site	Over 35% of people below 200% poverty level
Project Site 1-mile Buffer	40% people have limited English proficiency
Census Tracts	Over 40% people of color
Census Tribal Areas	

NORTH

1,800 900 0 1,800

Feet



Blue Lake Energy Storage System
Map 3
Environmental Justice
City of Shakopee, MN

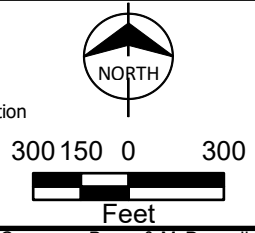
Service Layer Credits: NAIP Imagery: Source: Esri, USDA FSA
Hybrid Reference Layer (US Edition): Esri Community Maps Contributors, Metropolitan Council, MetroGIS, Three Rivers Park District, © OpenStreetMap, Microsoft, Esri, TomTom, Garmin, SafeGraph, GeoTechnologies, Inc, MET/INASA, USGS, EPA



City of Shakopee Zoning

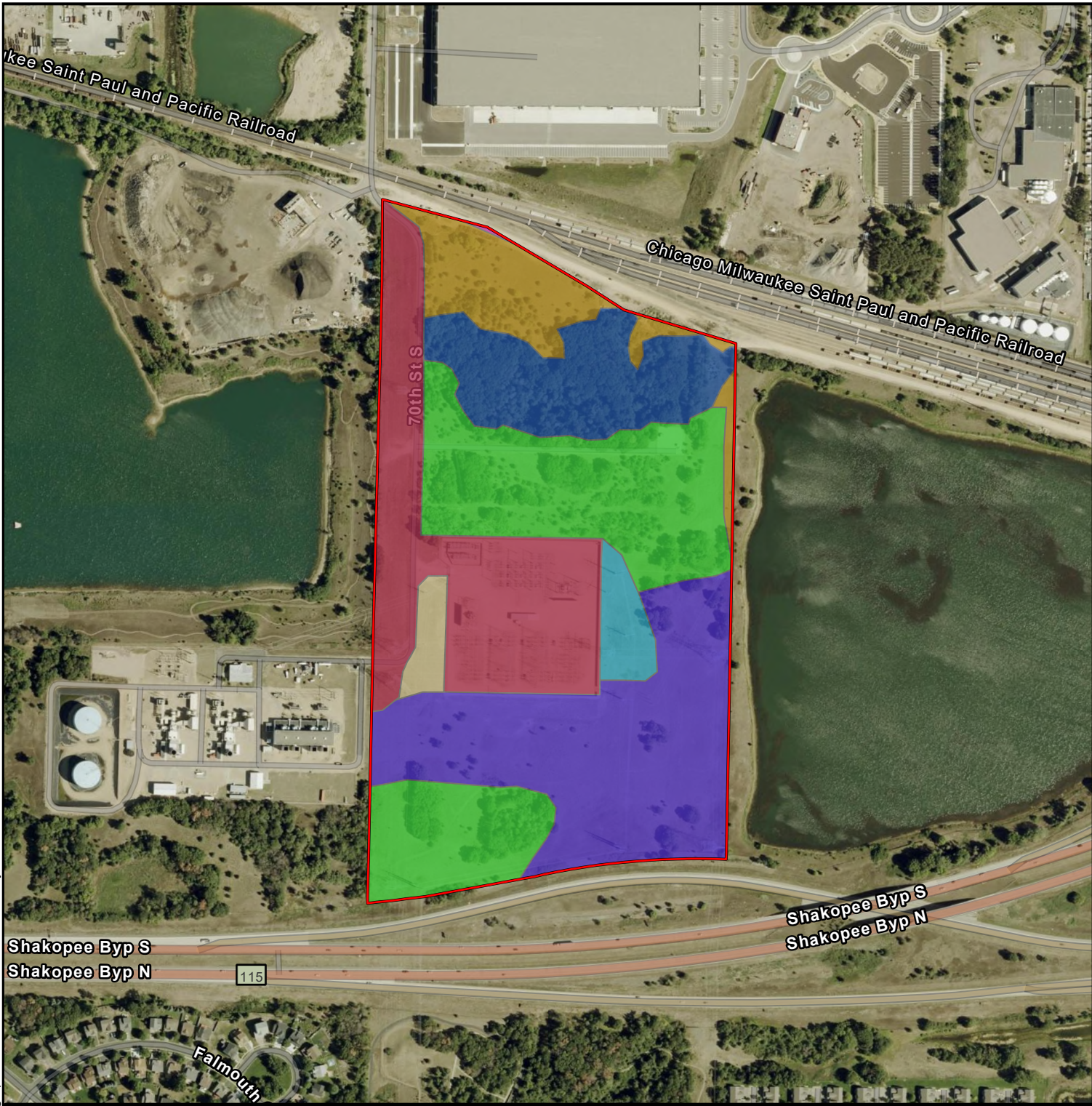
- Project Site
- Residential
- Park and Open Space

- Light Industrial
- Heavy Industrial
- Highway Business
- Agricultural Preservation



Blue Lake Energy Storage System
Map 4
Zoning Districts
City of Shakopee, MN

Service Layer Credits: NAIP Imagery: Source: Esri, USDA FSA
 Hybrid Reference Layer (US Edition): Esri Community Maps Contributors, Metropolitan Council, MetroGIS, Three Rivers Park District, © OpenStreetMap, Microsoft, Esri, TomTom, Garmin, SafeGraph, GeoTechnologies, Inc, METINASA, USGS, EPA,
 World Imagery (Firefly): Source: Esri, Maxar, Earthstar Geographics, and the GIS User Community

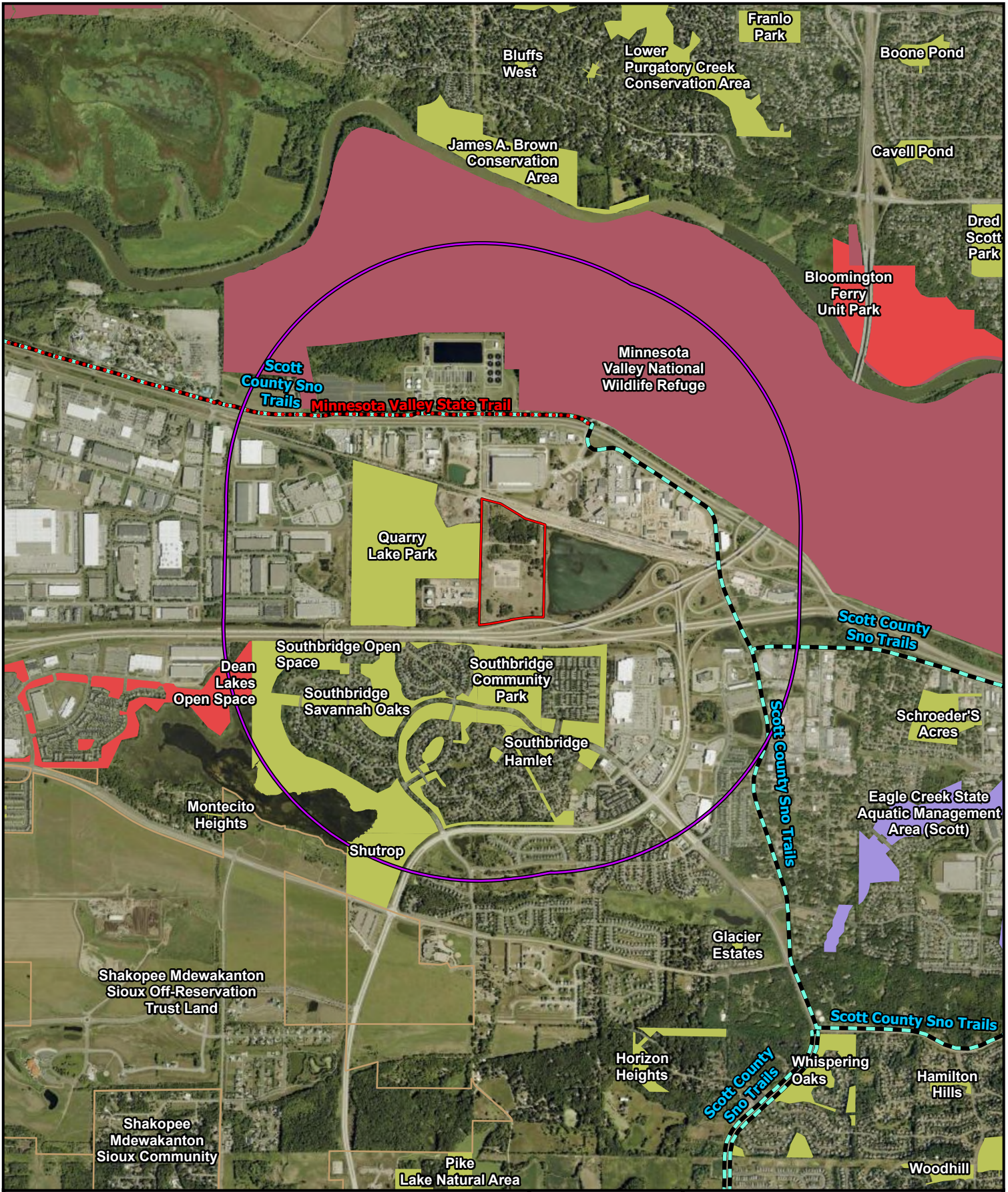


Project Site	Dry oak savanna barrens subtype; 18.5 acre, 27.1%	Medium-tall grass altered/non-native dominated grassland; 5.8 acre, 8.6%	Sand and gravel pits with 11-25% impervious cover; <0.1 acre, 0.1%
Minnesota Land Cover Classification (Acreage & Percent of Project Area)	Dry prairie barrens subtype; 17.8 acre, 26.1%	Oak woodland-brushland; 8.5 acre, 12.4%	Upland soils with planted or maintained grasses; 1.2 acre, 1.8%
11% to 25% impervious cover with perennial grasses; 14.6 acre, 21.4%	Grassland with sparse deciduous trees - altered/non-native dominated vegetation; 1.8 acre, 2.6%	Pavement with 76-90% impervious cover; <0.1 acre, 0.1%	



Blue Lake Energy Storage System
Map 5
Land Cover
City of Shakopee, MN

Service Layer Credits: NAIP Imagery: Source: Esri, USDA FSA
 World Imagery (Firefly): Source: Esri, Maxar, Earthstar Geographics, and the GIS User Community



Project Site	Non-Governmental Organization
Project Area 1-mile Buffer	State Fish and Wildlife
Public Land Manager Name	City Land
American Indian Lands	State Trail
U.S. Fish and Wildlife Service (FWS)	Snowmobile Trail

1,800 900 0 1,800

Feet




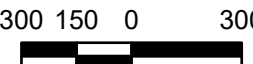
Blue Lake Energy Storage System
Map 6
Public Land Ownership & Recreation
City of Shakopee, MN

Service Layer Credits: NAIP Imagery: Source: Esri, USDA FSA
 Hybrid Reference Layer (US Edition): Esri Community Maps Contributors, Metropolitan Council, MetroGIS, Three Rivers Park District, © OpenStreetMap, Microsoft, Esri, TomTom, Garmin, SafeGraph, GeoTechnologies, Inc, METINASA, USGS, EPA



Map Unit Symbol	Map Unit Name	Percent Hydric Classification	Hydric Classification	Farmland Classification
Dg	Dune land		0 Non-Hydric	Not Prime Farmland
Ia	Isanti fine sandy loam	92	Predominantly Hydric	Not Prime Farmland
INT	Water, intermittent		0 Non-Hydric	Not Prime Farmland
PaA	Klossner muck, 0 to 1 percent slopes	100	Hydric	Farmland of Statewide Importance
ZaB	Sartell fine sand, 2 to 6 percent slopes	5	Predominantly Non-Hydric	Not Prime Farmland
ZaC2	Sartell fine sand, 6 to 12 percent slopes, moderately eroded	0	Non-Hydric	Not Prime Farmland

Project Site
 Soil Map Units
Soil Hydric Classifications
 Hydric
 Predominantly Hydric
 Predominantly Non-Hydric
 Non-Hydric



 NORTH

 300 150 0 300
 Feet



Blue Lake Energy Storage System
Map 7
Soils - Hydric Classification
City of Shakopee, MN

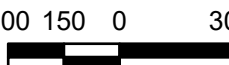


- Project Site
- Proposed Preliminary Development Area
- Delineated Wetland
- Public Water Watercourses
- Public Water Basins
- NHD Flowline
- NHD Waterbody
- NWI Wetland



NORTH

300
150
0
150
300

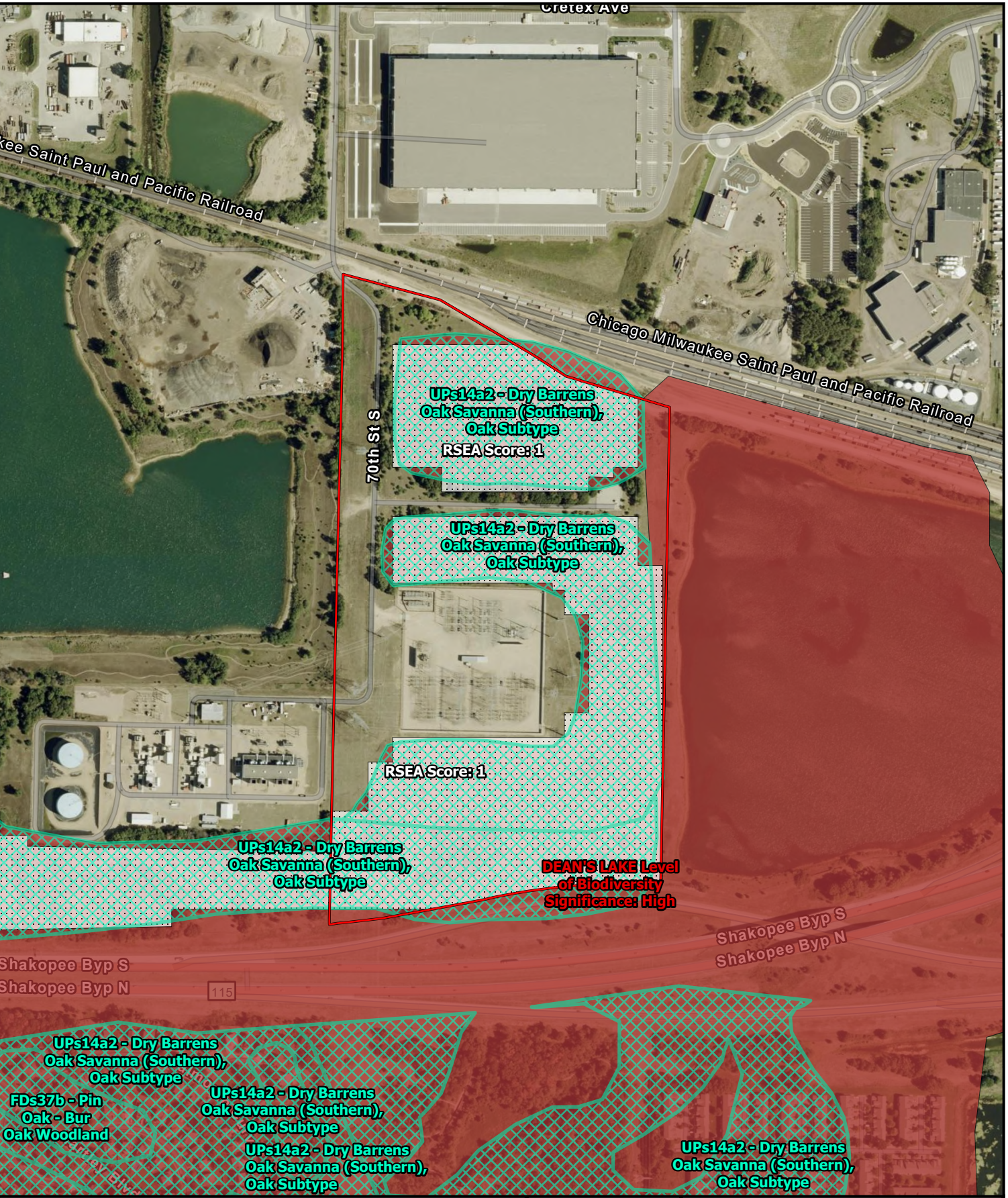


Feet



Blue Lake Energy Storage System
Map 8
Water Resources & Delineated Features
City of Shakopee, MN

Service Layer Credits: NAIP Imagery: Source: Esri, USDA FSA Hybrid Reference Layer (US Edition): Esri Community Maps Contributors, Metropolitan Council, MetroGIS, Three Rivers Park District, © OpenStreetMap, Microsoft, Esri, TomTom, Garmin, SafeGraph, GeoTechnologies, Inc, METI/NASA, USGS, EPA



Project Site	Scientific and Natural Areas	 NORTH 300 150 0 300 Feet
Calcareous Fens	Native Plant Communities	
NHIS Rare Natural Communities		
Designated	Regionally Significant Ecological Areas	
Candidate	MCBS Sites of Biodiversity Significance	
Nominated		

*No NHIS Features, Calcareous Fens, or SNAs in Extent

Blue Lake Energy Storage System
Figure 9
Unique Natural Features
City of Shakopee, MN

Issued: 5/30/2025