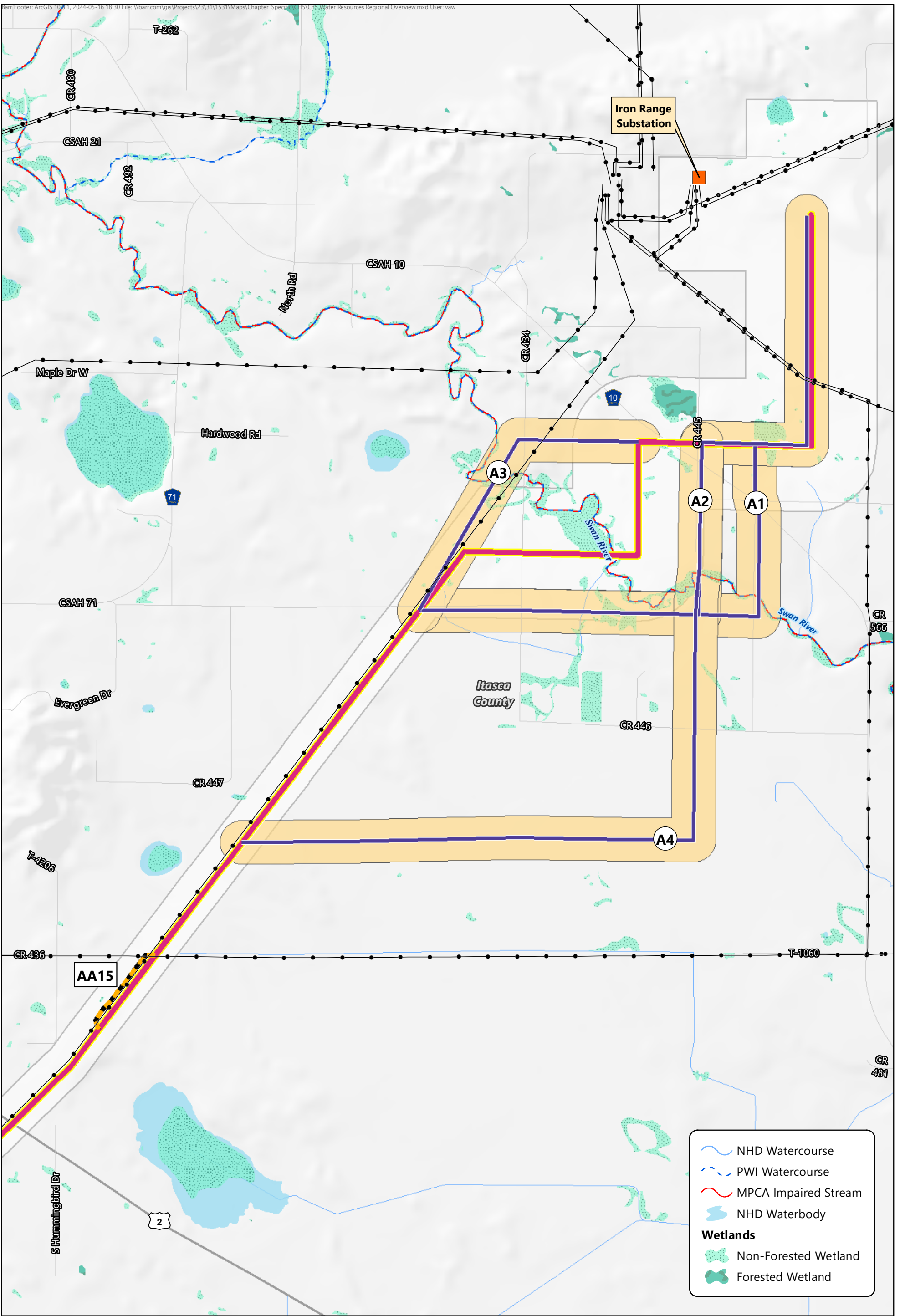


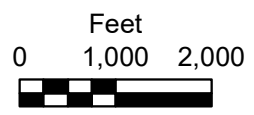


**Map Book 5G**  
**Water Resources Overview**



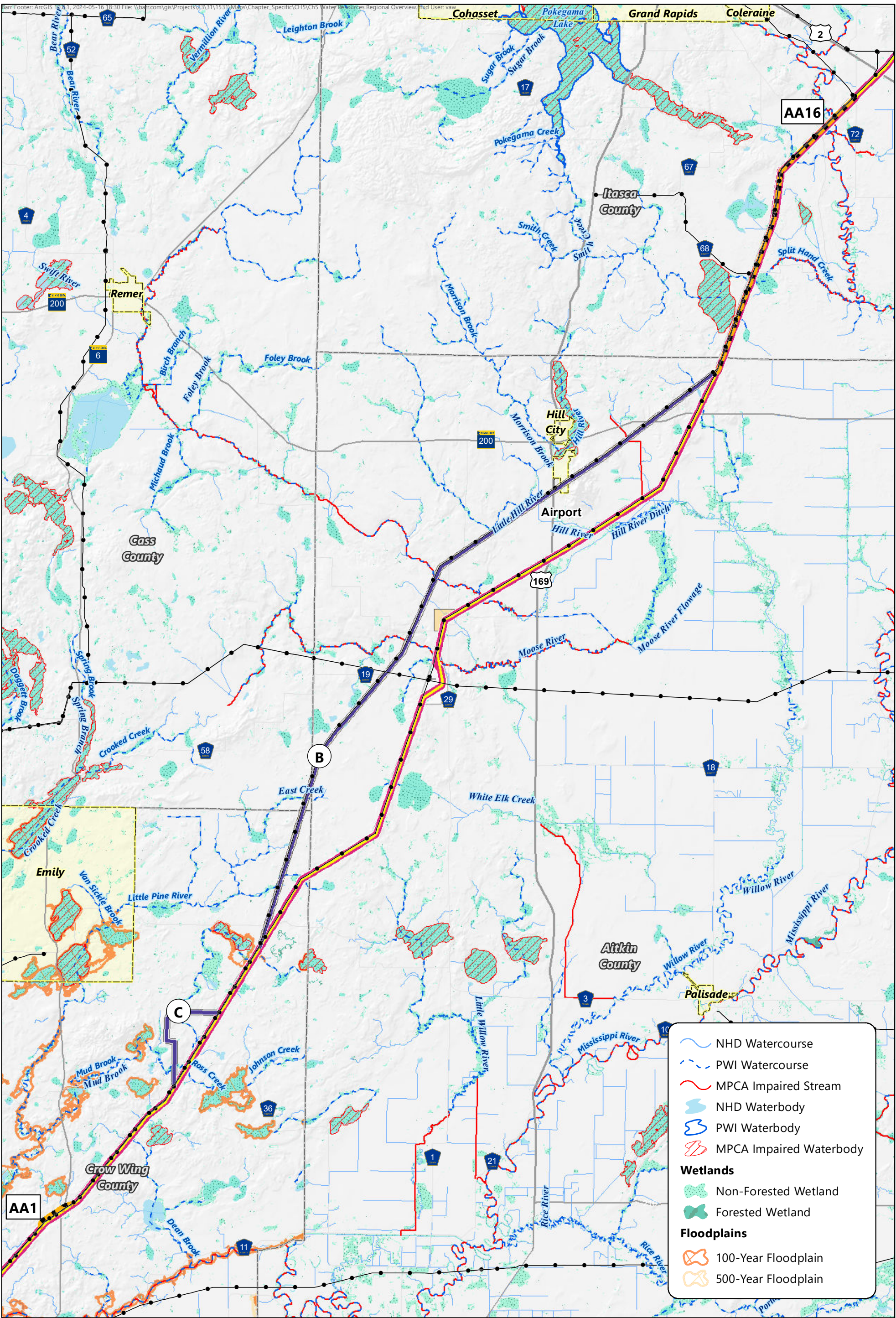
NHD Watercourse  
 PWI Watercourse  
 MPCA Impaired Stream  
 NHD Waterbody  
**Wetlands**  
 Non-Forested Wetland  
 Forested Wetland

Applicants' Proposed Route  
 Route Width  
 Applicants' Proposed Right of Way  
 Route Alternative  
 Alignment Alternative  
 Route Alternative Width  
 Existing Transmission Line  
 Iron Range Substation



Map 5G-1

**WATER RESOURCES OVERVIEW**  
Iron Range Substation Region  
Northland Reliability Project



- Applicants' Proposed Route
- Route Width
- Applicants' Proposed Right of Way
- Route Alternative
- Alignment Alternative

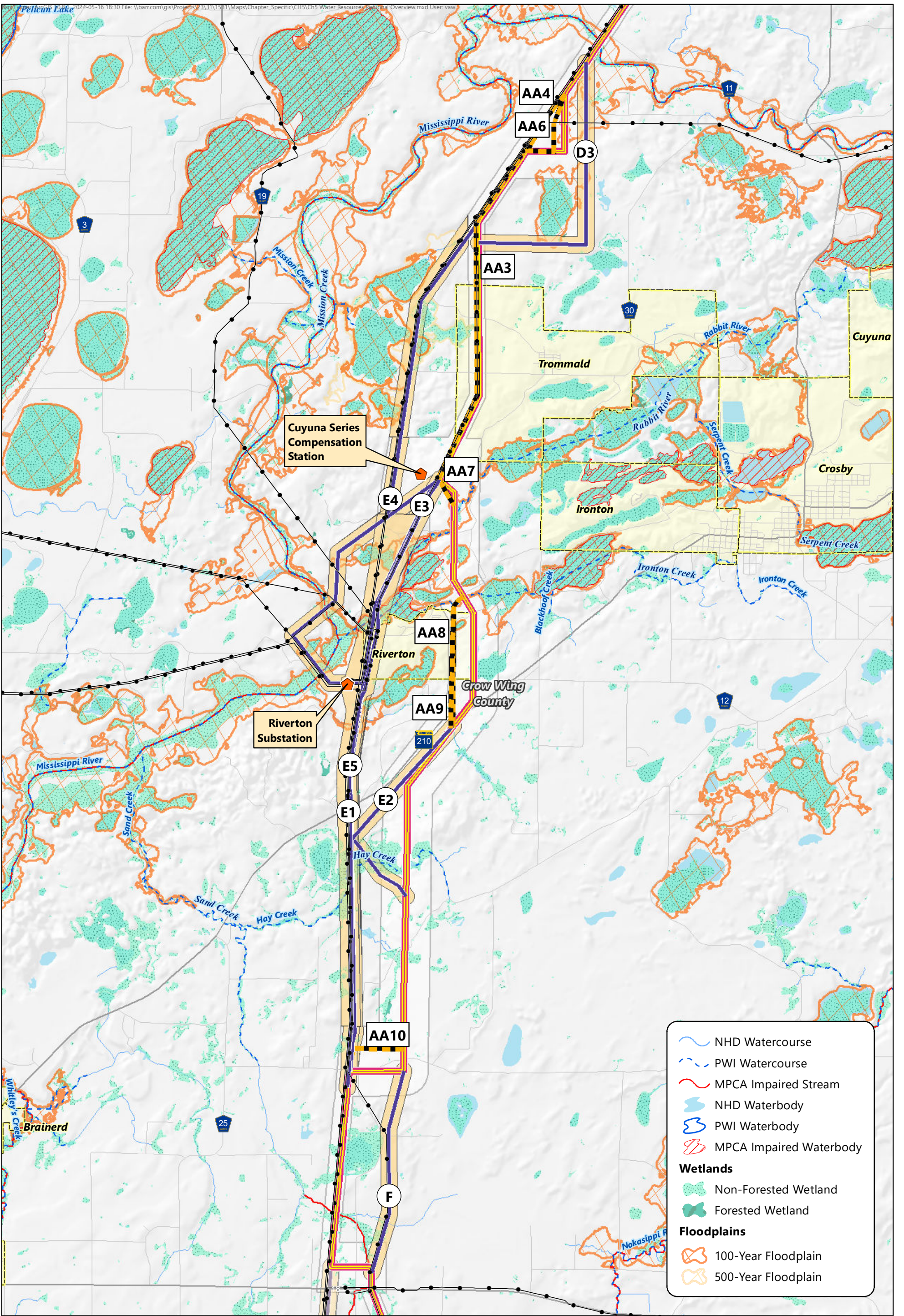
- Route Alternative Width
- Existing Transmission Line
- Municipal Boundary

- NHD Watercourse
- PWI Watercourse
- MPCA Impaired Stream
- NHD Waterbody
- PWI Waterbody
- MPCA Impaired Waterbody
- Wetlands**
- Non-Forested Wetland
- Forested Wetland
- Floodplains**
- 100-Year Floodplain
- 500-Year Floodplain



Map 5G-2

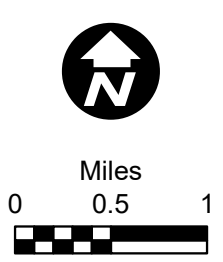
**WATER RESOURCES OVERVIEW**  
Hill City to Little Pine Region  
Northland Reliability Project



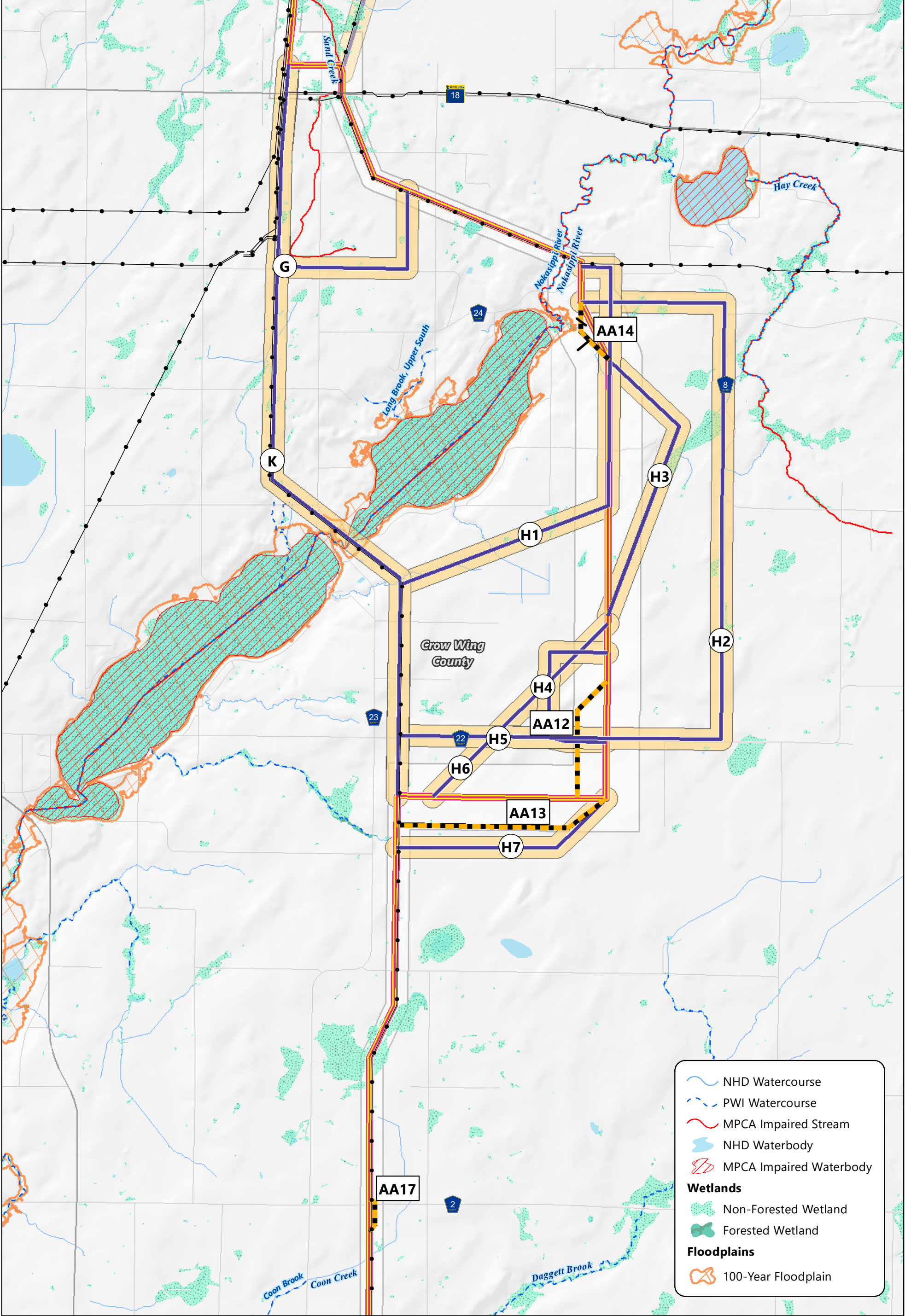
- Applicants' Proposed Route
- Route Width
- Applicants' Proposed Right of Way
- Route Alternative
- Alignment Alternative
- Route Alternative Width

- Existing Transmission Line
- Riverton Substation
- Cuyuna Series Compensation Station
- Municipal Boundary

- NHD Watercourse
- PWI Watercourse
- MPCA Impaired Stream
- NHD Waterbody
- PWI Waterbody
- MPCA Impaired Waterbody
- Wetlands**
- Non-Forested Wetland
- Forested Wetland
- Floodplains**
- 100-Year Floodplain
- 500-Year Floodplain



Map 5G-3  
**WATER RESOURCES OVERVIEW**  
 Cole Lake/Riverton Region  
 Northland Reliability Project



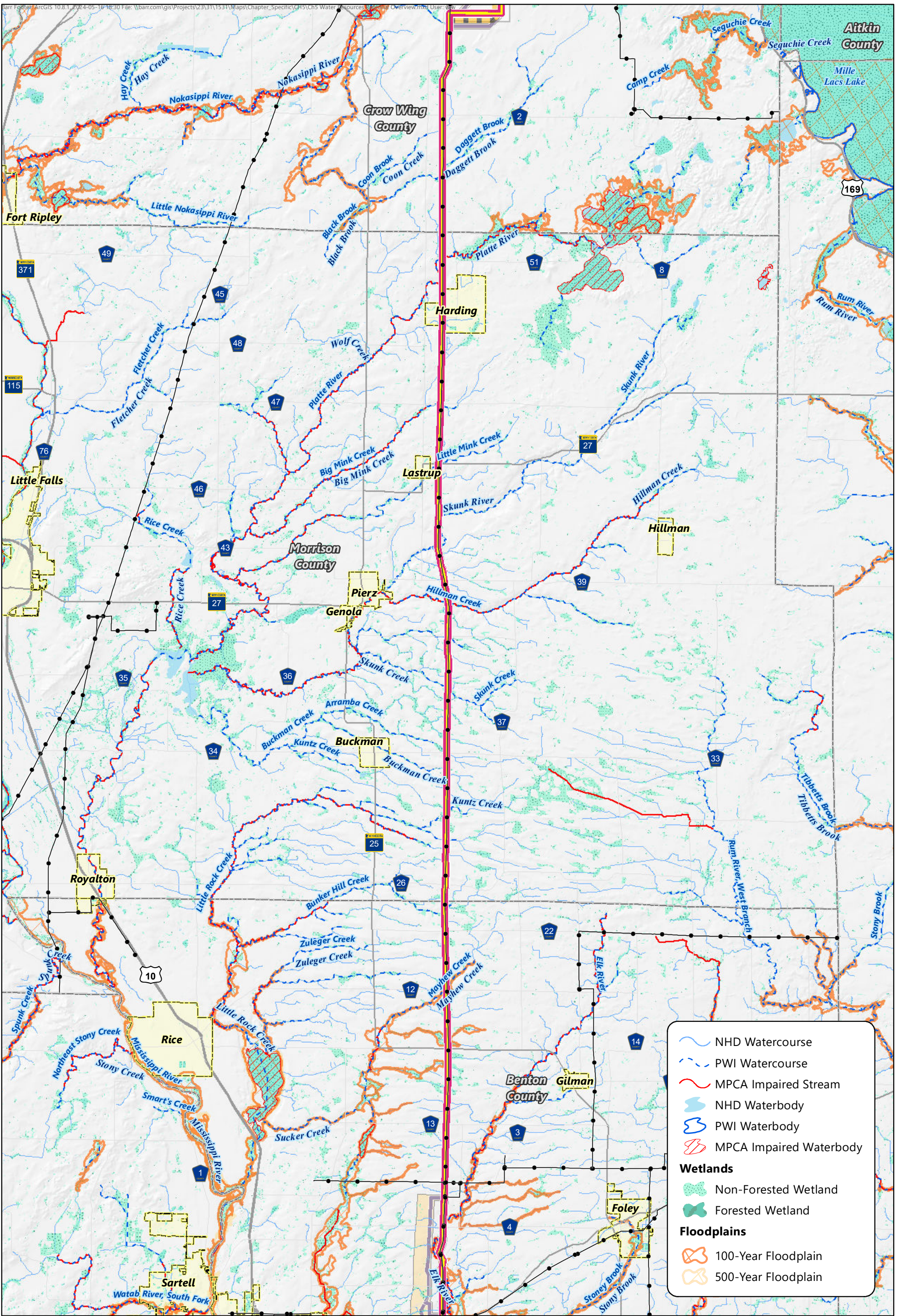
- Applicants' Proposed Route
- Route Width
- Applicants' Proposed Right of Way
- Route Alternative
- Alignment Alternative






- Route Alternative Width
- Existing Transmission Line

Feet  
0 2,000 4,000

- NHD Watercourse
- PWI Watercourse
- MPCA Impaired Stream
- NHD Waterbody
- MPCA Impaired Waterbody
- Wetlands**
  - Non-Forested Wetland
  - Forested Wetland
- Floodplains**
  - 100-Year Floodplain

Map 5G-4  
**WATER RESOURCES OVERVIEW**  
Long Lake Region  
Northland Reliability Project



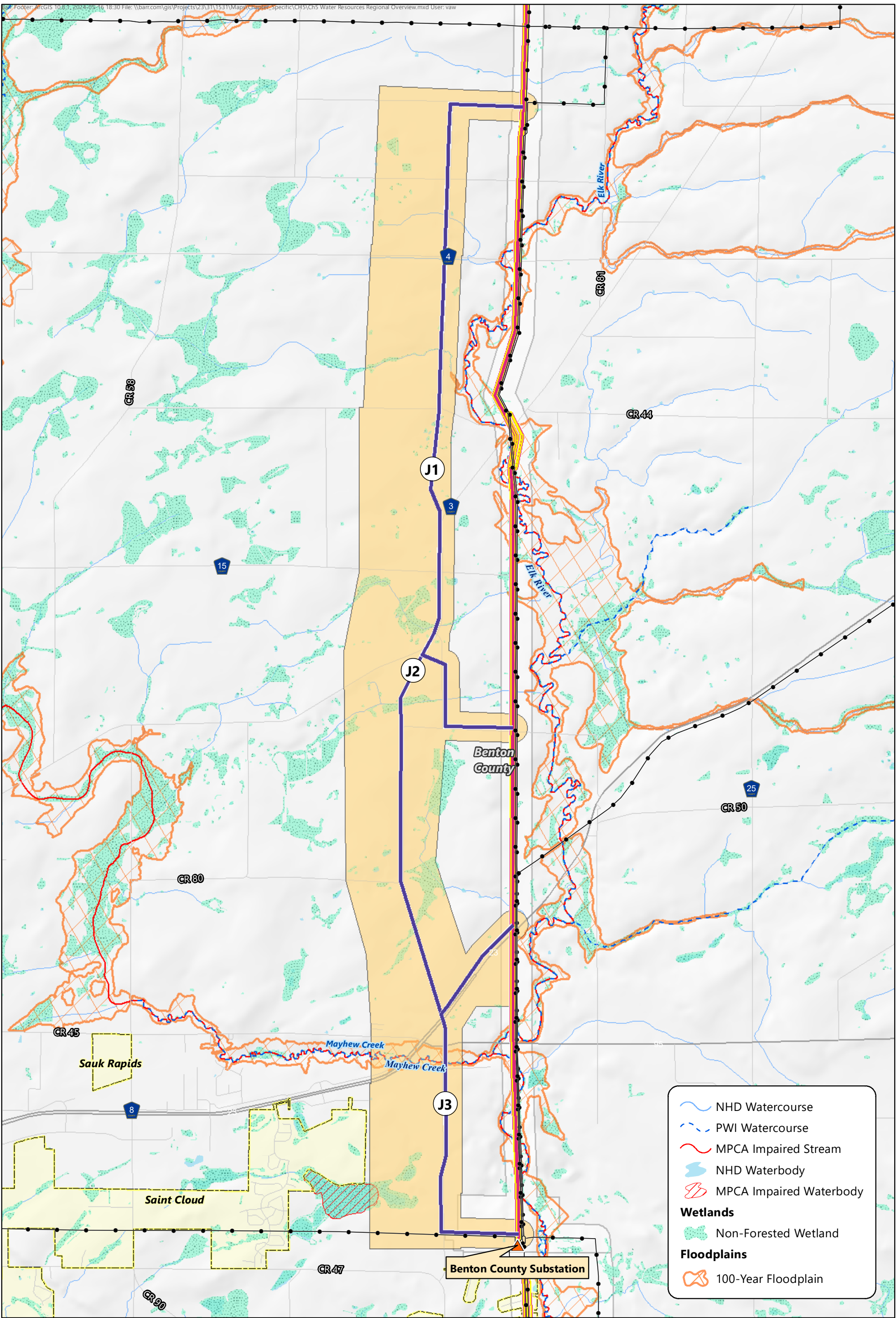
-  Applicants' Proposed Route
-  Route Alternative Width
-  Route Width
-  Existing Transmission Line
-  Applicants' Proposed Right of Way
-  Municipal Boundary
-  Route Alternative
-  Alignment Alternative

-  NHD Watercourse
-  PWI Watercourse
-  MPCA Impaired Stream
-  NHD Waterbody
-  PWI Waterbody
-  MPCA Impaired Waterbody
- Wetlands**
-  Non-Forested Wetland
-  Forested Wetland
- Floodplains**
-  100-Year Floodplain
-  500-Year Floodplain

Map 5G-5

**WATER RESOURCES OVERVIEW**  
Morrison County Region  
Northland Reliability Project





- Applicants' Proposed Route
- Route Width
- Applicants' Proposed Right of Way
- Route Alternative
- Alignment Alternative

- Route Alternative Width
- Existing Transmission Line
- Benton County Substation
- Municipal Boundary

NHD Watercourse

PWI Watercourse

MPCA Impaired Stream

NHD Waterbody

MPCA Impaired Waterbody

**Wetlands**

Non-Forested Wetland

**Floodplains**

100-Year Floodplain

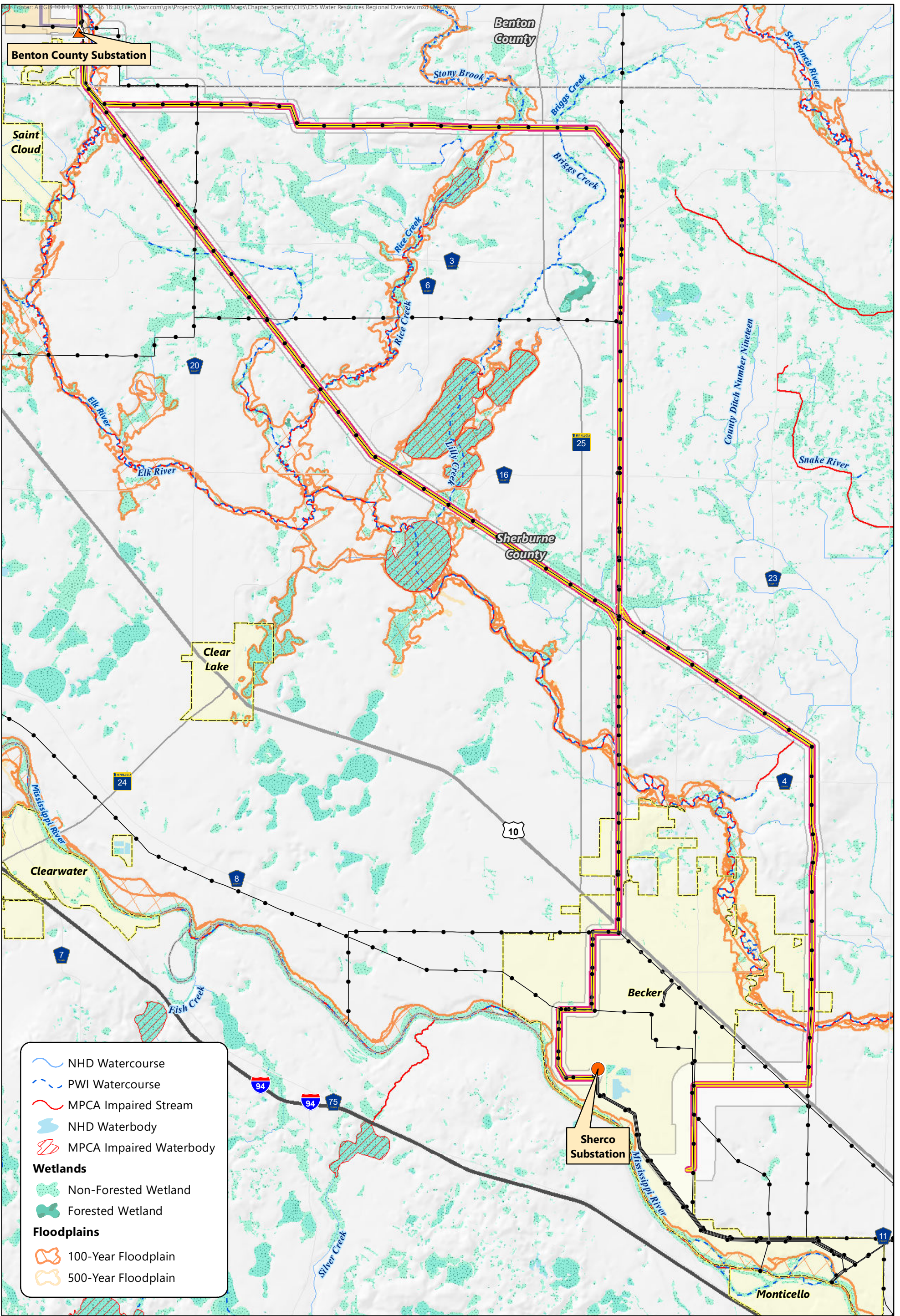
Feet

0    1,500    3,000



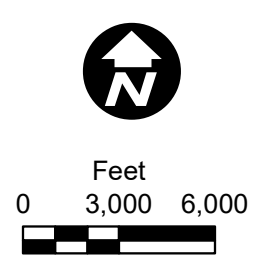
Map 5G-6

**WATER RESOURCES OVERVIEW**  
 Benton County Elk River Region  
 Northland Reliability Project



- Applicants' Proposed Route
- Route Width
- Applicants' Proposed Right of Way
- Route Alternative
- Alignment Alternative

- Route Alternative Width
- Existing Transmission Line
- Benton County Substation
- Sherco Substation
- Municipal Boundary



Map 5G-7  
**WATER RESOURCES OVERVIEW**  
 Sherburne County Region  
 Northland Reliability Project