

Proposed Pipeline - Sandpiper	Existing Enbridge Pipelines	Tract Boundary	Milepost - Sandpiper	Facility Boundary
Foreign Pipes	Transmission Lines	Section Lines	Potential Block Valve	Previously Sited Facility Boundary
SPREAD BREAK			Environmental Survey Area (ESA)	

500 250 0 500 1,000 Feet

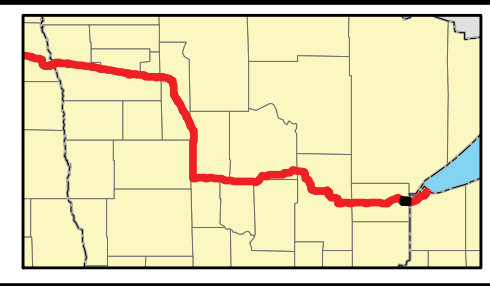
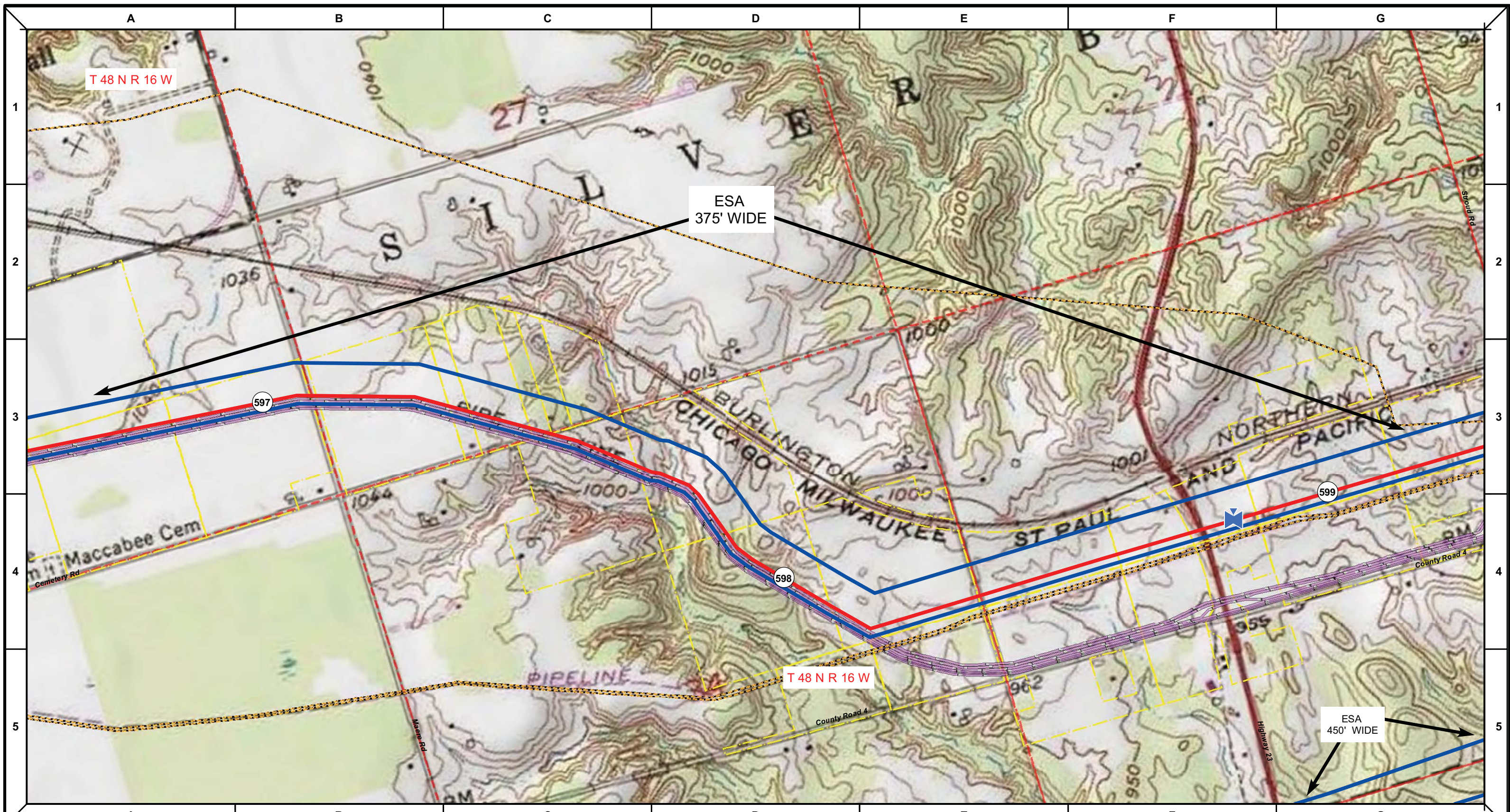
DRAWN	CHECKED	APPROVED	DATE	REV NO.	DESCRIPTION
			1/29/14	2	PUC Update - Revision D-2 Alignment
			12/19/13	1	PUC Update - Revision D Alignment
			10/10/13	0	PUC Submittal

**ENBRIDGE**  
NORTH DAKOTA PIPELINE COMPANY LLC

**PROPOSED SANDPIPER  
PIPELINE PROJECT  
ROUTE MAP  
Carlton County, MN**

DRAWN: <b>MLB</b>	CHECKED: <b>-</b>
DATE: <b>Jan 30, 2014</b>	SCALE: <b>AS SHOWN</b>

Spread: 8      Map: 122 of 123



Proposed Pipeline - Sandpiper	Milepost - Sandpiper	Tract Boundary
Existing Enbridge Pipelines	Potential Block Valve	Facility Boundary
Foreign Pipes	Environmental Survey Area (ESA)	Previously Sited Facility Boundary
Transmission Lines		Section Lines
SPREAD BREAK		

500 250 0 500 1,000 Feet

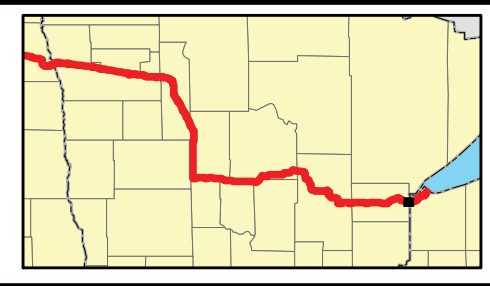
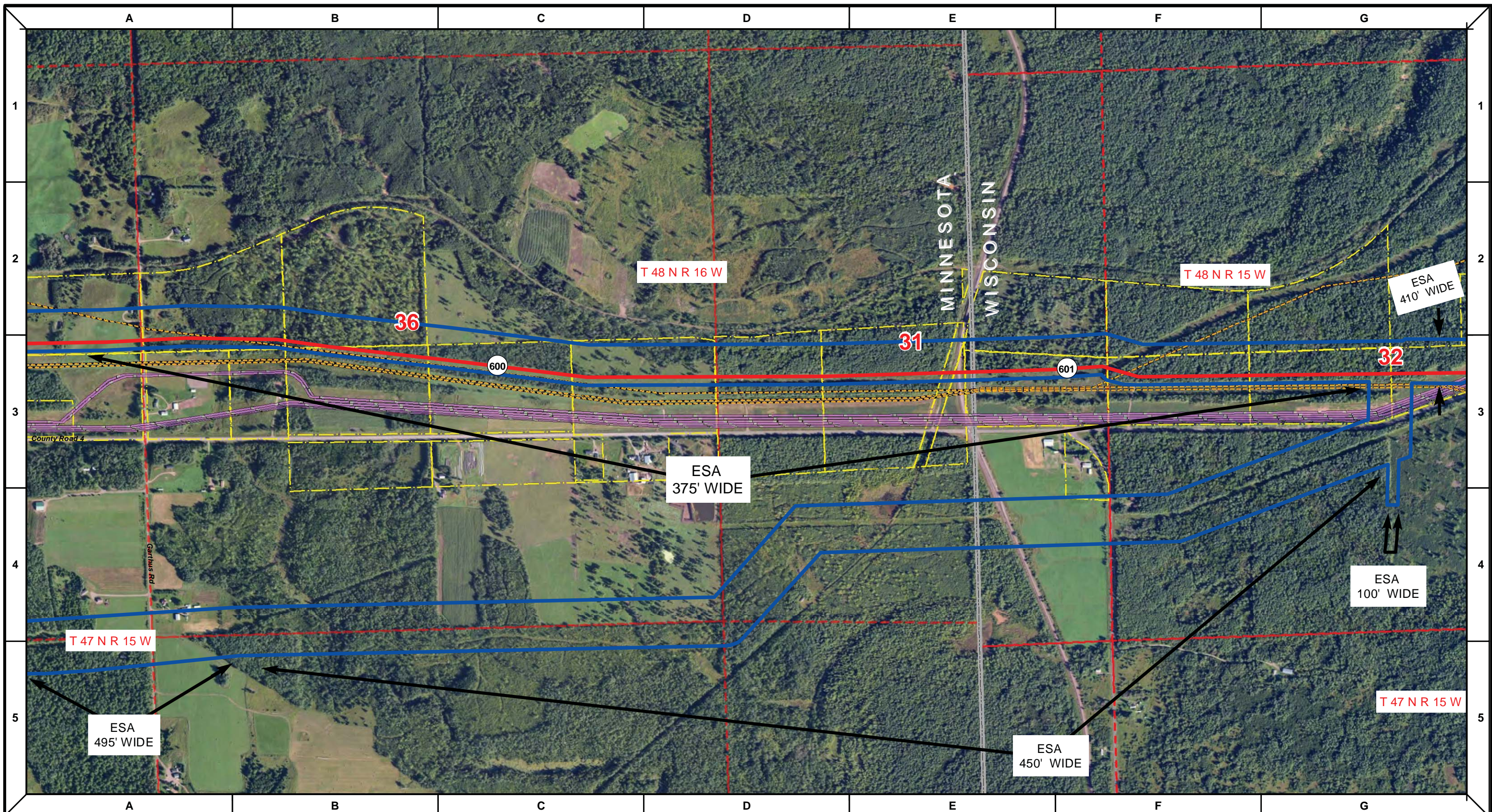
DRAWN	CHECKED	APPROVED	DATE	REV NO.	DESCRIPTION
			1/29/14	2	PUC Update - Revision D-2 Alignment
			12/19/13	1	PUC Update - Revision D Alignment
			10/10/13	0	PUC Submittal

**NORTH DAKOTA PIPELINE COMPANY LLC**

**PROPOSED SANDPIPER PIPELINE PROJECT**  
**ROUTE MAP**  
 Carlton County, MN

DRAWN: <b>MLB</b>	CHECKED: <b>-</b>
DATE: <b>Jan 30, 2014</b>	SCALE: <b>AS SHOWN</b>

Spread: 8      Map: 122 of 123



Proposed Pipeline - Sandpiper	Milepost - Sandpiper	Tract Boundary
Existing Enbridge Pipelines	Potential Block Valve	Facility Boundary
Foreign Pipes	Environmental Survey Area (ESA)	Previously Sited Facility Boundary
Transmission Lines		Section Lines
SPREAD BREAK		

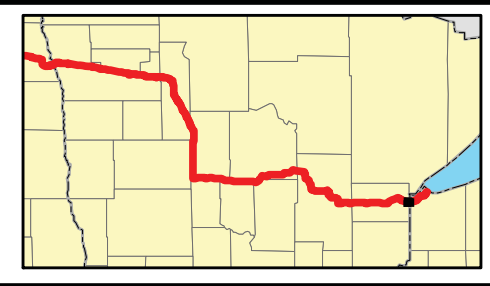
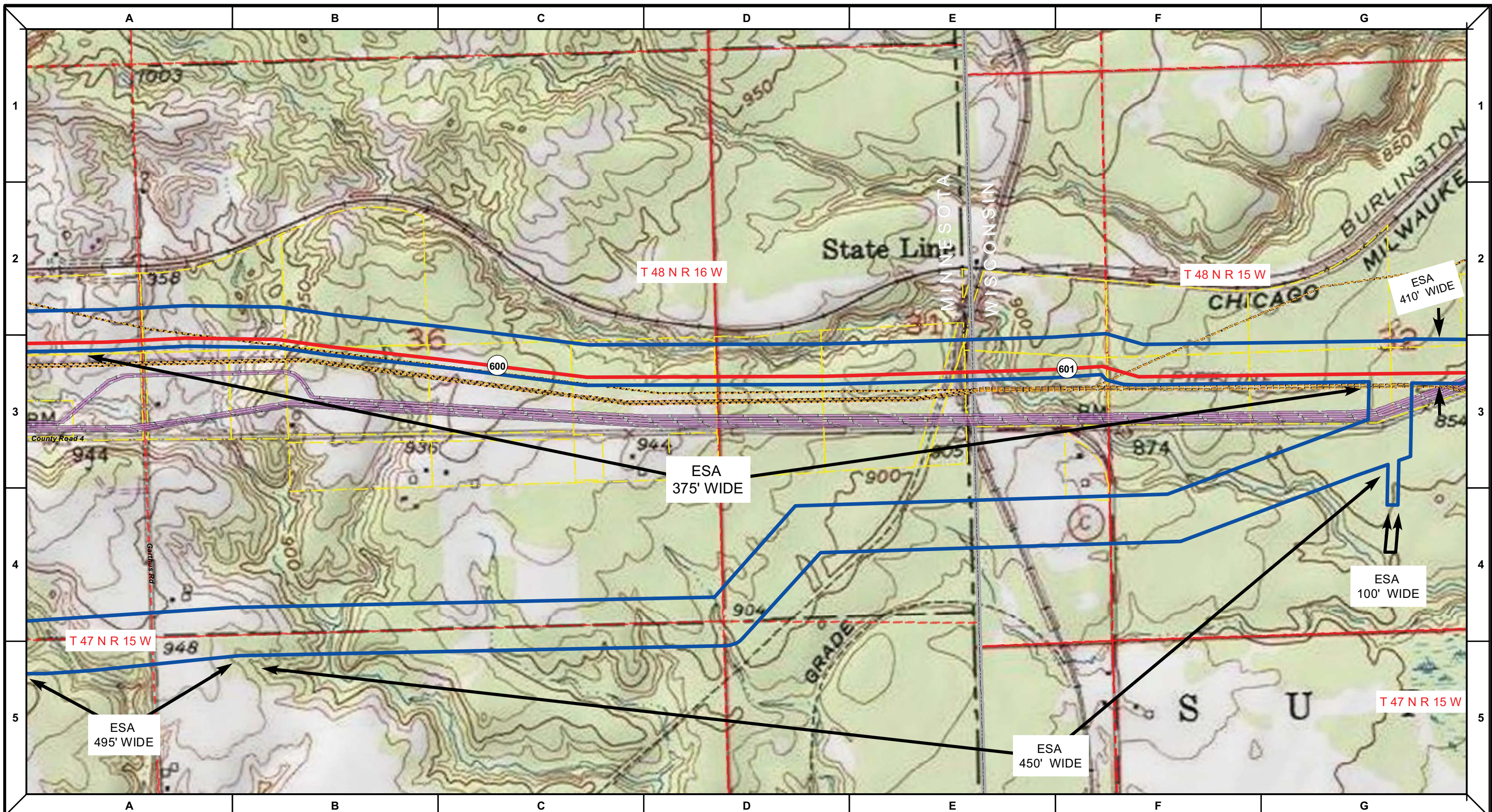
DRAWN	CHECKED	APPROVED	DATE	REV NO.	DESCRIPTION
			1/29/14	2	PUC Update - Revision D-2 Alignment
			12/19/13	1	PUC Update - Revision D Alignment
			10/10/13	0	PUC Submittal

NORTH DAKOTA PIPELINE COMPANY LLC

**PROPOSED SANDPIPER PIPELINE PROJECT**  
 ROUTE MAP  
 Carlton County, MN & Douglas County, WI

DRAWN: <i>MLB</i>	CHECKED: <i>-</i>
DATE: <i>Jan 30, 2014</i>	SCALE: <i>AS SHOWN</i>

Spread: 8 Map: 123 of 123



Proposed Pipeline - Sandpiper	Existing Enbridge Pipelines	Tract Boundary	Facility Boundary
Foreign Pipes	Transmission Lines	Previously Sited Facility Boundary	Section Lines
SPREAD BREAK	Milepost - Sandpiper	Potential Block Valve	Environmental Survey Area (ESA)

DRAWN	CHECKED	APPROVED	DATE	REV NO.	DESCRIPTION
			1/29/14	2	PUC Update - Revision D-2 Alignment
			12/19/13	1	PUC Update - Revision D Alignment
			10/10/13	0	PUC Submittal

**NORTH DAKOTA PIPELINE COMPANY LLC**

**PROPOSED SANDPIPER PIPELINE PROJECT**  
 ROUTE MAP  
 Carlton County, MN & Douglas County, WI

DRAWN: <b>MLB</b>	CHECKED: <b>-</b>
DATE: <b>Jan 30, 2014</b>	SCALE: <b>AS SHOWN</b>

Spread: 8      Map: 123 of 123