



Typical
Landscape
Photo 1



Typical
Landscape
Photo 2



Typical
Landscape
Photo 3



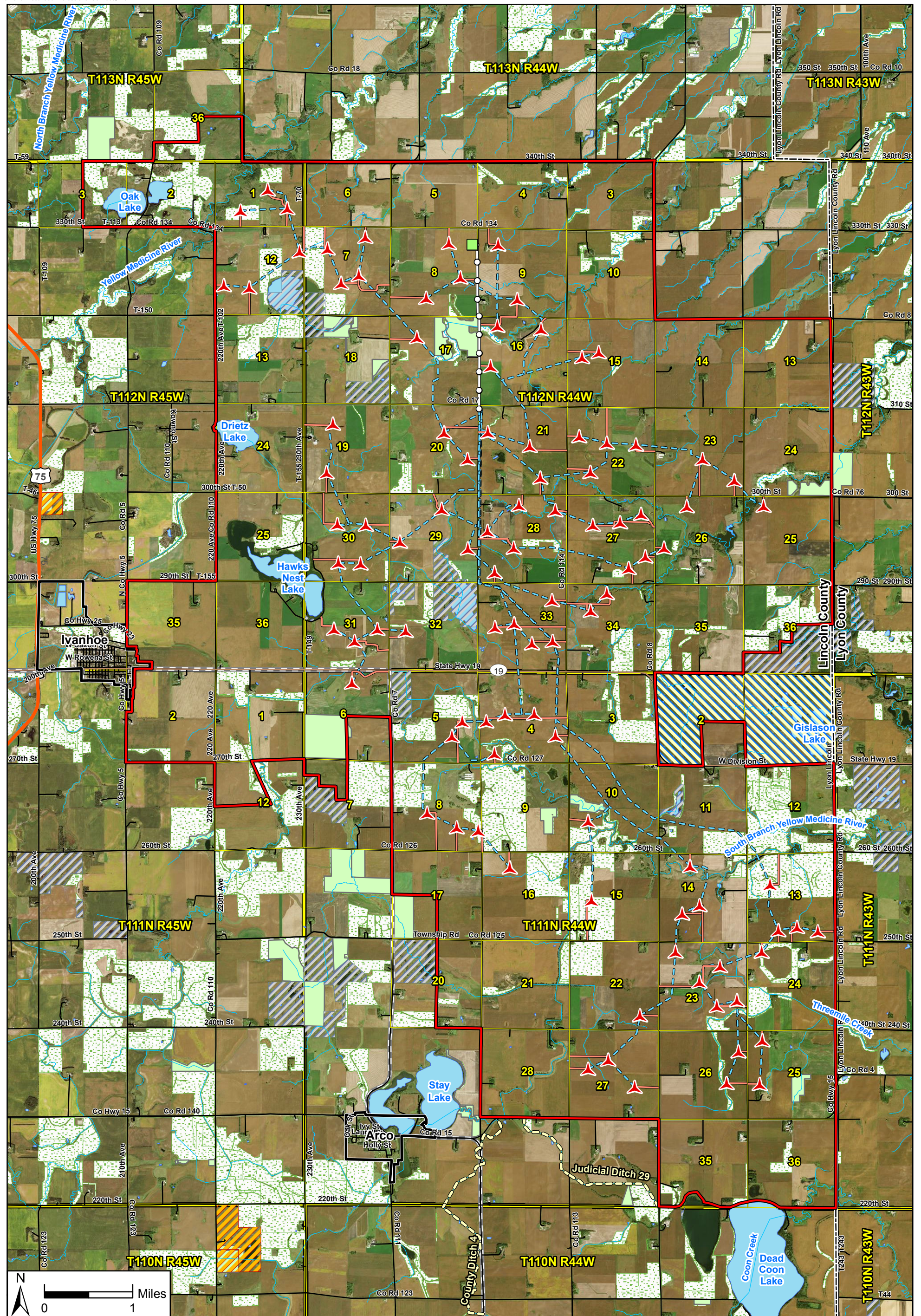
Typical
Landscape
Photo 4

Data Source(s): Westwood (2016).

Red Pine Wind Project

Lincoln County, Minnesota

Typical Landscape Within Project Area



Westwood
 Toll Free (888) 937-5150 westwoodps.com
 Westwood Professional Services, Inc.

- Legend**
- Proposed Turbine (V100)
 - Current Project Boundary
 - Proposed Access Road (V11)
 - Proposed Collection Line (V11)
 - Proposed Transmission Line
 - Proposed Substation
 - Municipal Boundary
 - County Boundary
 - PLS Township Boundary
 - PLS Section Boundary
 - Highway
 - Major Road
 - Minor Road
 - Railroad
 - Snowmobile Trail
 - NHD Flowline
 - NHD Waterbody
 - Waterfowl Production Area
 - Wildlife Management Area
 - National Wildlife Refuge
 - State Funded Conservation Easement
 - Designated Wildlife Lake
 - Conservation Reserve Program (CRP)

Red Pine Wind Project

Lincoln County, Minnesota
 Recreation, Wildlife, and Protected Areas

Map 5

Red Pine Sound Analysis
V100- 2.0 80 m HH
Worst Case

Client

Westwood

Project Description

Sound analysis on nearby residences from V100-2.0 80 m HH WTG's (v26) assuming 105 + 2dB at 10 m/s at HH and General ground attenuation model (0.5). Includes ambient noise (40 dB(A)).

Location: Ivanhoe, MN

Project #: 20162030







Issue Dates

#	Description	Date
1	Original	2016.06.30

Drawn By: JH

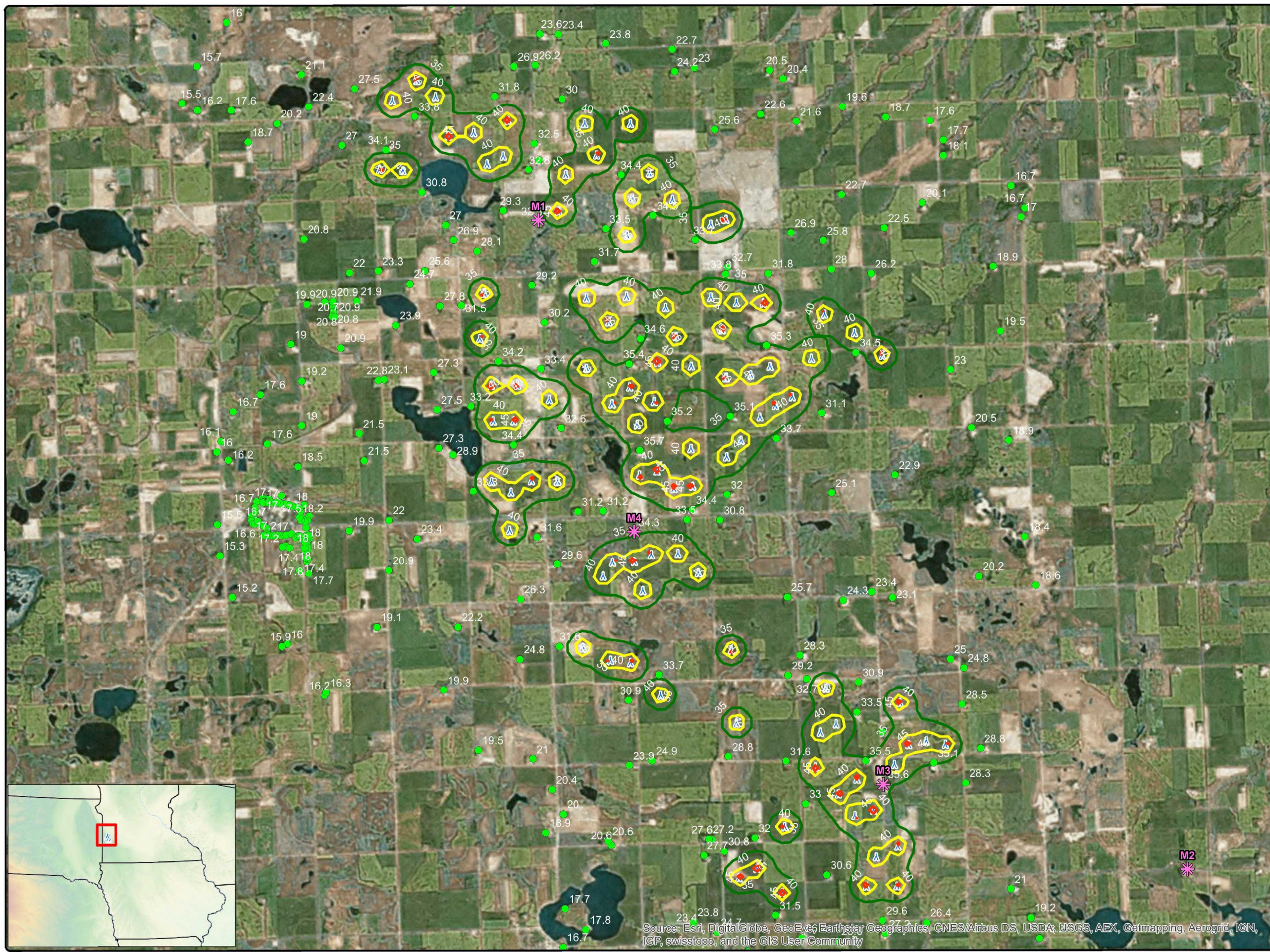
Checked By: JH

Legend

-  Ambient Monitoring Location
-  Occupied Residences (dB(A))
- Worst Case Sound Level (dB(A))**
-  35
-  40
-  45
-  V100_80m HH v26

Map 6a

COPYRIGHT:
 All maps, plans, specifications, computer files, field data, notes and other documents and instruments prepared by EAPC as instruments of service shall remain the property of EAPC. EAPC shall retain all common law, statutory and other reserved rights, including the copyright thereto.



Source: Esri, DigitalGlobe, GeoEye, Earthstar Geographics, CNES/Airbus DS, USDA, JSGS, AEX, Getmapping, Aerogrid, IGN, IGP, swisstopo, and the GIS User Community



Neither EAPC nor any person acting on their behalf: (a) makes any warranty, express or implied, with respect to the use of any information disclosed on this drawing; or (b) assumes any liability with respect to the use of any information or methods disclosed on this drawing. Any recipient of this document, by their acceptance or use of this document, releases EAPC, its parent corporations and its affiliates, from any liability for direct, indirect, consequential, or special loss or damage whether arising in contract, warranty, express or implied, tort or otherwise, and irrespective of fault, negligence, and strict liability. The responsibilities for the applications and use of the material contained in this document remain solely with the client.

Red Pine Sound Analysis
V117- 3.3 80 m HH
Worst Case

Client
 Westwood

Project Description
 Sound analysis on nearby residences from V117-3.3 80 m HH WTG's (v24) assuming 108.5 + 2dB at 10 m/s at HH and General ground attenuation model (0.5). Includes ambient noise (40 dB(A)).



Location: Ivanhoe, MN
Project #: 20162030

Issue Dates






#	Description	Date
1	Original	2016.06.30


Drawn By: JH Checked By: JH

Legend

-  Ambient Monitoring Location
-  Occupied Residences (dB(A))


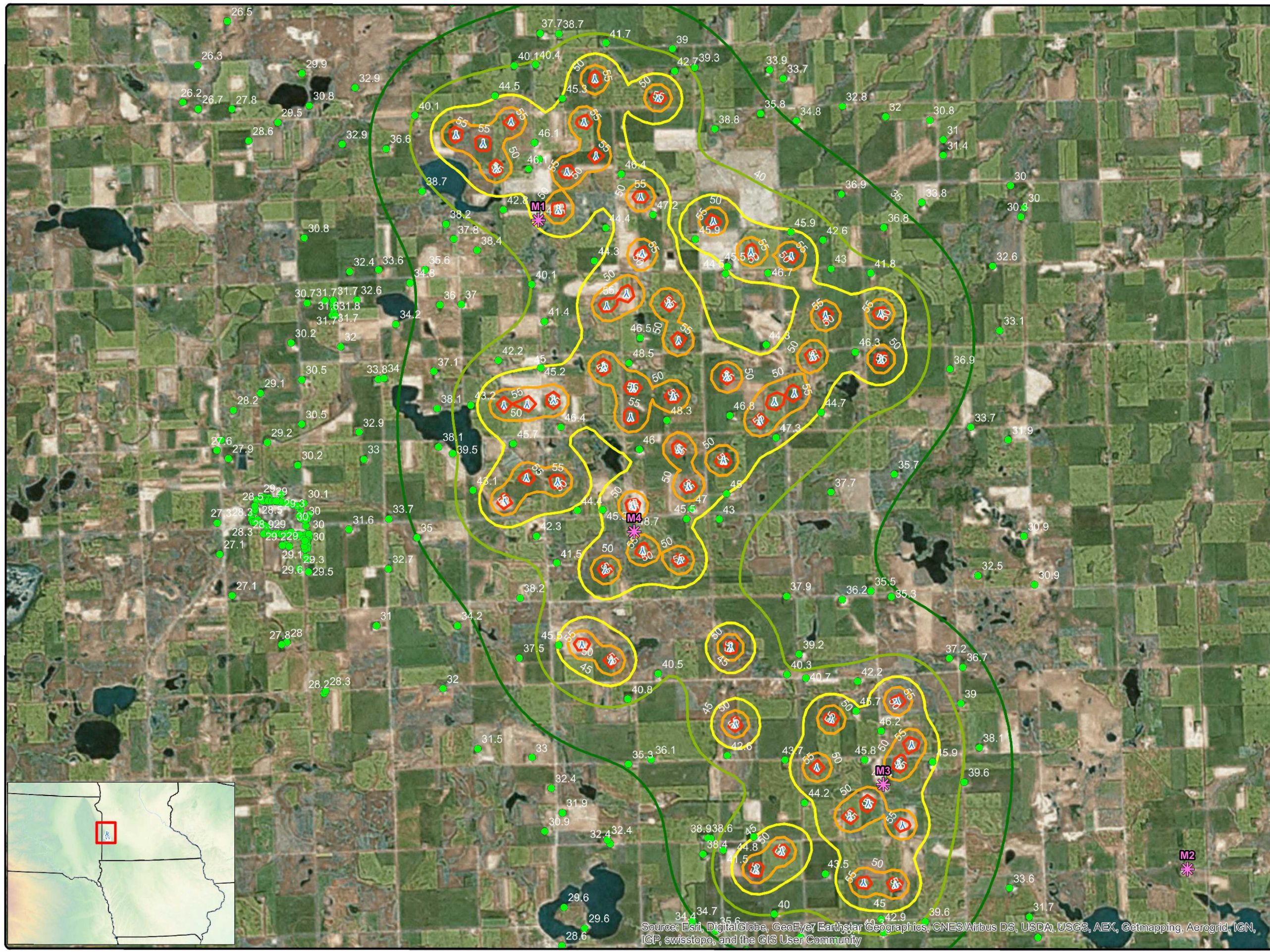
Worst Case Sound Levels dB(A)

-  35
-  40
-  45
-  50
-  55

 V117 80m HH v24

Map 6b

COPYRIGHT:
 All maps, plans, specifications, computer files, field data, notes and other documents and instruments prepared by EAPC as instruments of service shall remain the property of EAPC. EAPC shall retain all common law, statutory and other reserved rights, including the copyright thereto.

Source: Esri, DigitalGlobe, GeoEye, Earthstar Geographics, CNES/Airbus DS, USDA, USGS, AEX, Getmapping, Aerogrid, IGN, IGP, swisstopo, and the GIS User Community



Neither EAPC nor any person acting on their behalf: (a) makes any warranty, express or implied, with respect to the use of any information disclosed on this drawing; or (b) assumes any liability with respect to the use of any information or methods disclosed on this drawing. Any recipient of this document, by their acceptance or use of this document, releases EAPC, its parent corporations and its affiliates, from any liability for direct, indirect, consequential, or special loss or damage whether arising in contract, warranty, express or implied, tort or otherwise, and irrespective of fault, negligence, and strict liability. The responsibilities for the applications and use of the material contained in this document remain solely with the client.

Red Pine Sound Analysis
V126- 3.3 87 m HH
Worst Case

Client
 Westwood

Project Description
 Sound analysis on nearby residences from V126-3.3 87 m HH WTG's (v25) assuming 108.5 + 2dB at 10 m/s at HH and General ground attenuation model (0.5). Includes ambient noise (40 dB(A)).



Location: Ivanhoe, MN
Project #: 20162030

Issue Dates






#	Description	Date
1	Original	2016.06.30


Drawn By: JH Checked By: JH

Legend

-  Ambient Monitoring Location
-  Occupied Residences (dB(A))


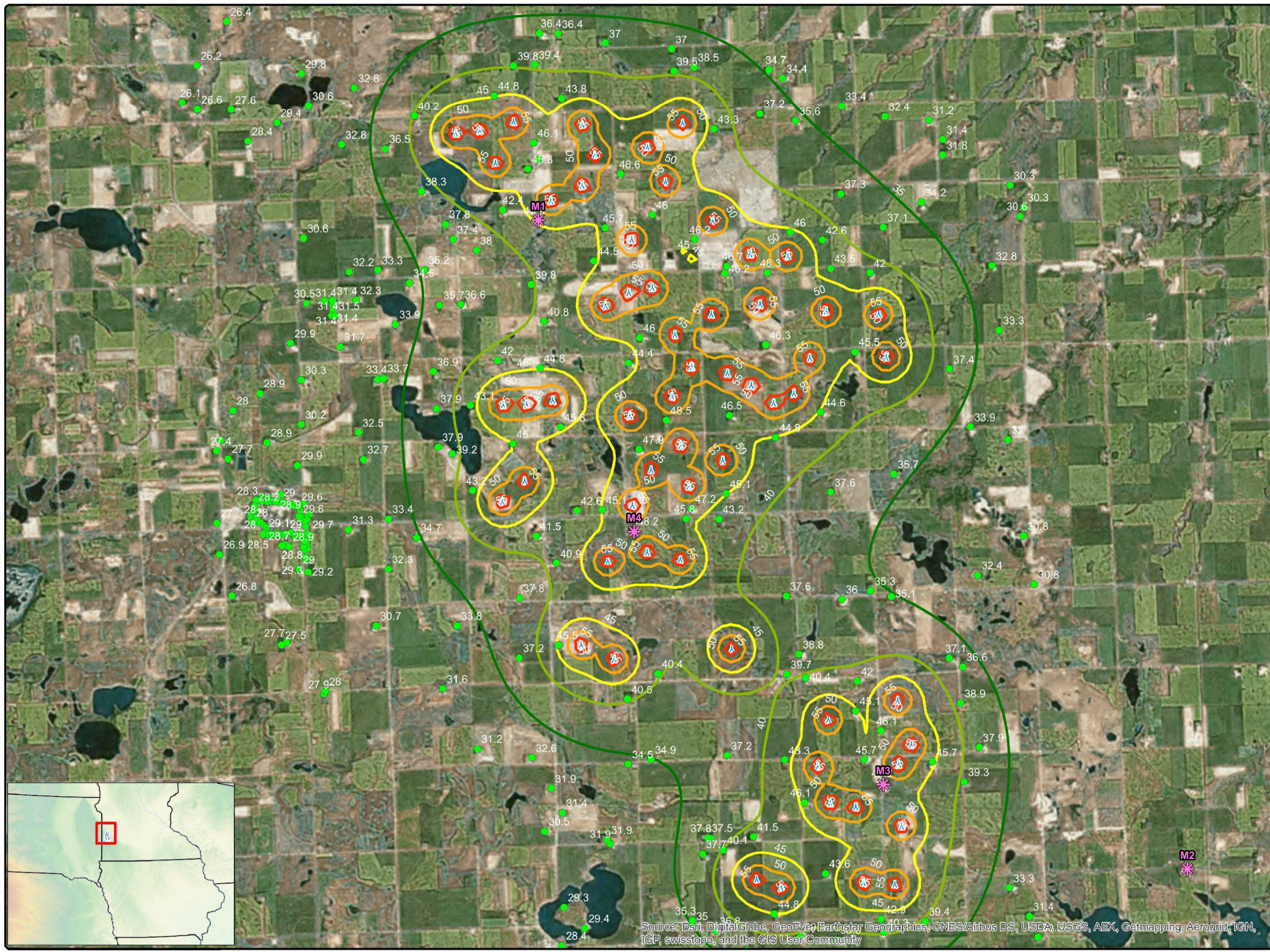
Worst Case Sound Level (dB(A))

-  35
-  40
-  45
-  50
-  55

 V126 87m HH v25

Map 6c

COPYRIGHT:
 All maps, plans, specifications, computer files, field data, notes and other documents and instruments prepared by EAPC as instruments of service shall remain the property of EAPC. EAPC shall retain all common law, statutory and other reserved rights, including the copyright thereto.

Source: Esri, DigitalGlobe, GeoEye, Earthstar Geographics, CNES/Airbus DS, USDA, USGS, AEX, Getmapping, Aerogrid, IGN, ICP, swisstopo, and the GIS User Community

Neither EAPC nor any person acting on their behalf: (a) makes any warranty, express or implied, with respect to the use of any information disclosed on this drawing; or (b) assumes any liability with respect to the use of any information or methods disclosed on this drawing. Any recipient of this document, by their acceptance or use of this document, releases EAPC, its parent corporations and its affiliates, from any liability for direct, indirect, consequential, or special loss or damage whether arising in contract, warranty, express or implied, tort or otherwise, and irrespective of fault, negligence, and strict liability. The responsibilities for the applications and use of the material contained in this document remain solely with the client.

**Red Pine Sound Analysis
V100 - 2.0 80 m HH
Realistic Case**

Client
Westwood

Project Description
Sound analysis on nearby residences from V100-2.0 80 m HH WTG's (v26) assuming 105 at 10 m/s at HH and General ground attenuation model (0.5). Includes ambient noise (40 dB(A)).



Location: Ivanhoe, MN
Project #: 20162030

Issue Dates





#	Description	Date
1	Original	2016.06.30

Drawn By: JH Checked By: JH

Legend


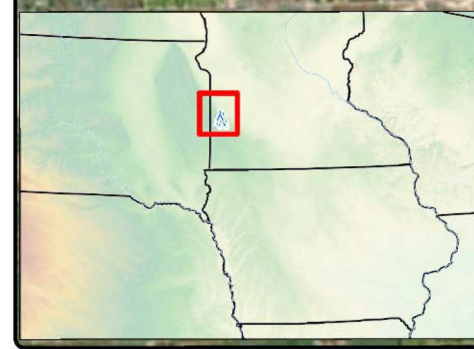
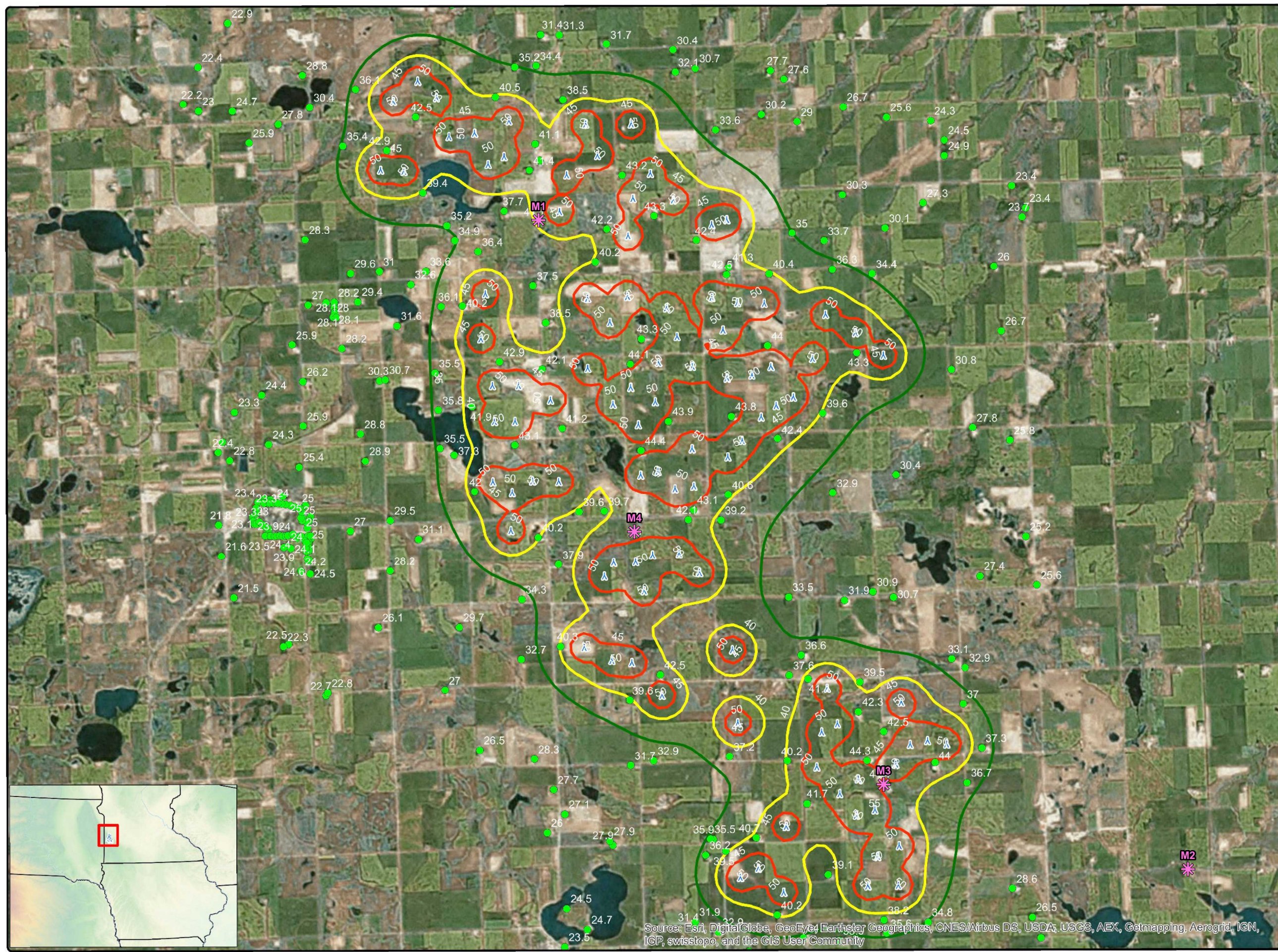
-  Ambient Monitoring Location
-  Occupied Residences dB(A)

Realistic Case Sound Level (dB(A))

-  35
-  40
-  45
-  V100_80m HH v26

Map 6d

COPYRIGHT:
All maps, plans, specifications, computer files, field data, notes and other documents and instruments prepared by EAPC as instruments of service shall remain the property of EAPC. EAPC shall retain all common law, statutory and other reserved rights, including the copyright thereto.

Source: Esri, DigitalGlobe, GeoEye, Earthstar Geographics, CNES/Airbus DS, USDA, USGS, AEX, Getmapping, Aerogrid, IGN, IGP, swisstopo, and the GIS User Community



Neither EAPC nor any person acting on their behalf: (a) makes any warranty, express or implied, with respect to the use of any information disclosed on this drawing; or (b) assumes any liability with respect to the use of any information or methods disclosed on this drawing. Any recipient of this document, by their acceptance or use of this document, releases EAPC, its parent corporations and its affiliates, from any liability for direct, indirect, consequential, or special loss or damage whether arising in contract, warranty, express or implied, tort or otherwise, and irrespective of fault, negligence, and strict liability. The responsibilities for the applications and use of the material contained in this document remain solely with the client.



www.eapc.net | 701.775.3000

**Red Pine Sound Analysis
V117- 3.3 80 m HH
Realistic Case**

Client

Westwood

Project Description

Sound analysis on nearby residences from V117-3.3 80 m HH WTG's (v24) assuming 108.5 at 10 m/s at HH and General ground attenuation model (0.5). Includes ambient noise (40 dB(A)).

Location: Ivanhoe, MN

Project #: 20162030

Issue Dates

#	Description	Date
1	Original	2016.06.30

Drawn By: JH

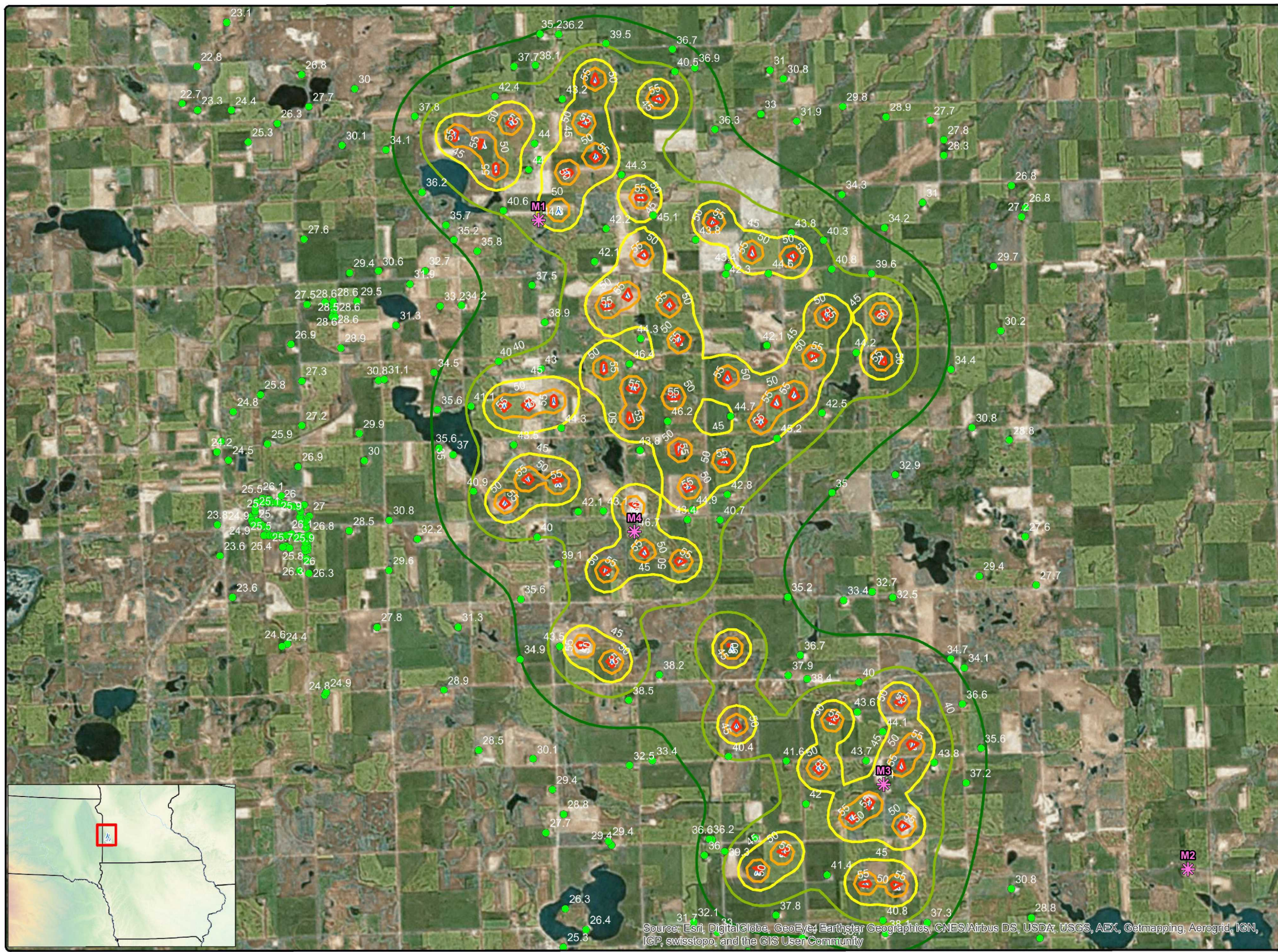
Checked By: JH

Legend

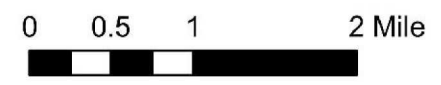
- Ambient Monitoring Location
- Occupied Residences (dB(A))
- Realistic Case Sound Levels dB(A)**
- 35
- 40
- 45
- 50
- 55
- V117 80m HH v24

Map 6e

COPYRIGHT:
All maps, plans, specifications, computer files, field data, notes and other documents and instruments prepared by EAPC as instruments of service shall remain the property of EAPC. EAPC shall retain all common law, statutory and other reserved rights, including the copyright thereto.



Source: Esri, DigitalGlobe, GeoEye, Earthstar Geographics, CNES/Airbus DS, USDA, USGS, AEX, Getmapping, Aerogrid, IGN, IGP, swisstopo, and the GIS User Community



Neither EAPC nor any person acting on their behalf: (a) makes any warranty, express or implied, with respect to the use of any information disclosed on this drawing; or (b) assumes any liability with respect to the use of any information or methods disclosed on this drawing. Any recipient of this document, by their acceptance or use of this document, releases EAPC, its parent corporations and its affiliates, from any liability for direct, indirect, consequential, or special loss or damage whether arising in contract, warranty, express or implied, tort or otherwise, and irrespective of fault, negligence, and strict liability. The responsibilities for the applications and use of the material contained in this document remain solely with the client.

**Red Pine Sound Analysis
V126 - 3.3 87 m HH
Realistic Case**

Client
Westwood

Project Description
Sound analysis on nearby residences from V126-3.3 87 m HH WTG's (v25) assuming 108.5 at 10 m/s at HH and General ground attenuation model (0.5). Includes ambient noise (40 dB(A)).


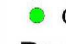
Location: Ivanhoe, MN
Project #: 20162030

Issue Dates






#	Description	Date
1	Original	2016.06.30


Drawn By: JH Checked By: JH

Legend

-  Ambient Monitoring Location
-  Occupied Residences dB(A)


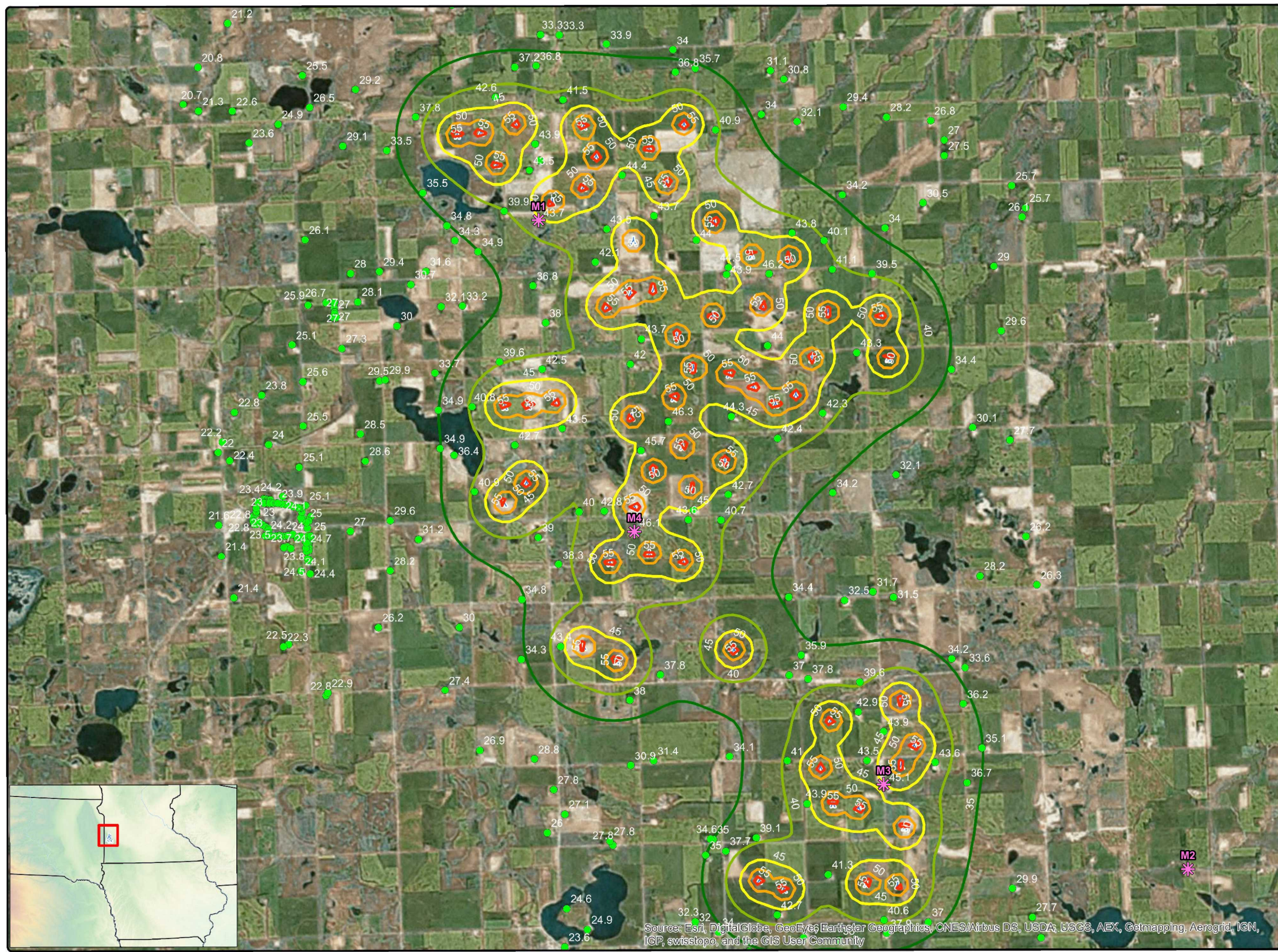
Realistic Case Sound Level (dB(A))

-  35
-  40
-  45
-  50
-  55

 V126 87m HH v25

Map 6f

COPYRIGHT:
All maps, plans, specifications, computer files, field data, notes and other documents and instruments prepared by EAPC as instruments of service shall remain the property of EAPC. EAPC shall retain all common law, statutory and other reserved rights, including the copyright thereto.

Source: Esri, DigitalGlobe, GeoEye, Earthstar Geographics, CNES/Airbus DS, USDA, USGS, AEX, Getmapping, Aerogrid, IGN, IGP, swisstopo, and the GIS User Community

Neither EAPC nor any person acting on their behalf: (a) makes any warranty, express or implied, with respect to the use of any information disclosed on this drawing; or (b) assumes any liability with respect to the use of any information or methods disclosed on this drawing. Any recipient of this document, by their acceptance or use of this document, releases EAPC, its parent corporations and its affiliates, from any liability for direct, indirect, consequential, or special loss or damage whether arising in contract, warranty, express or implied, tort or otherwise, and irrespective of fault, negligence, and strict liability. The responsibilities for the applications and use of the material contained in this document remain solely with the client.