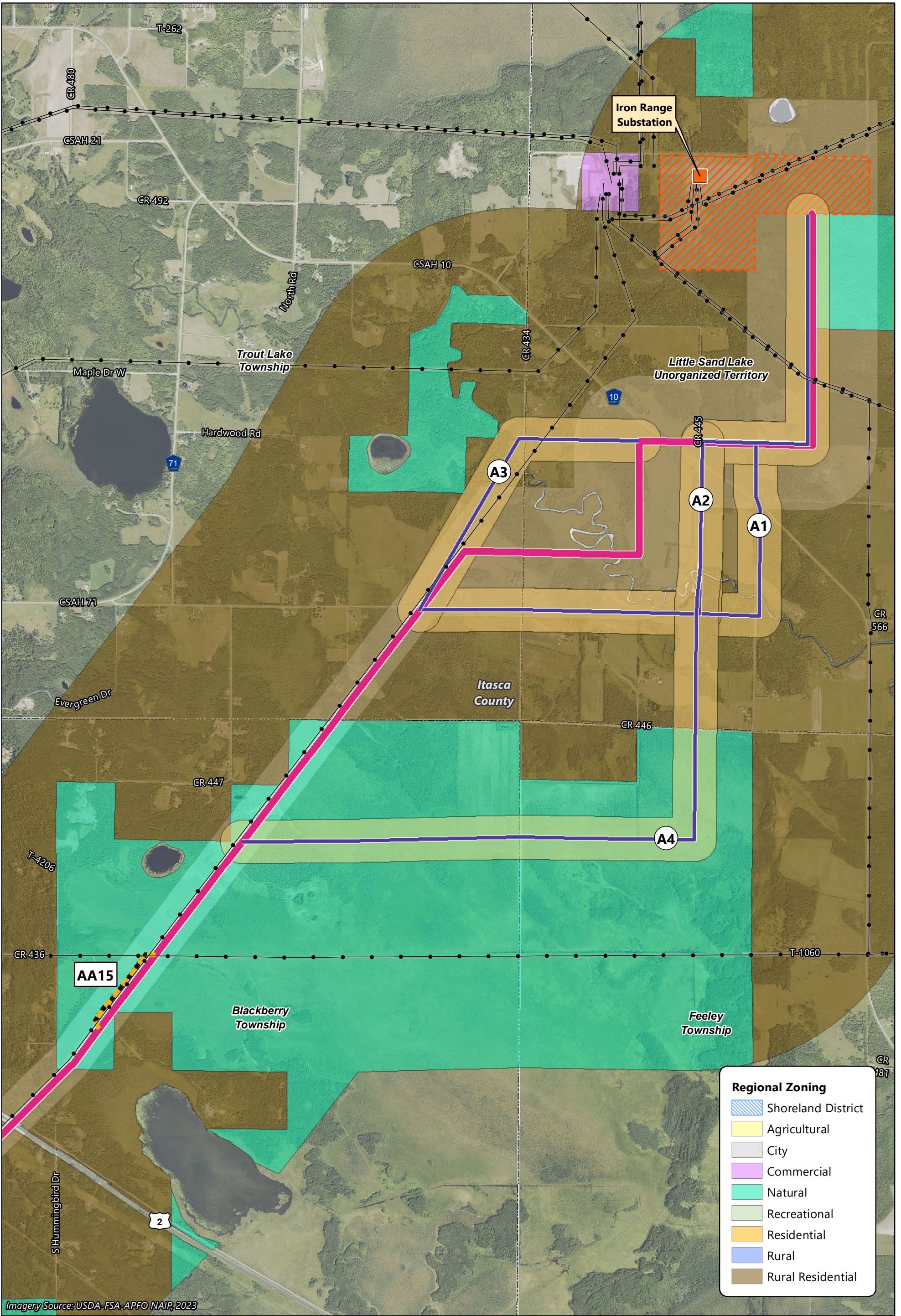

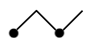




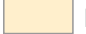

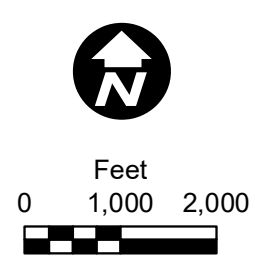


**Map Book 5B**  
**Regional Zoning**

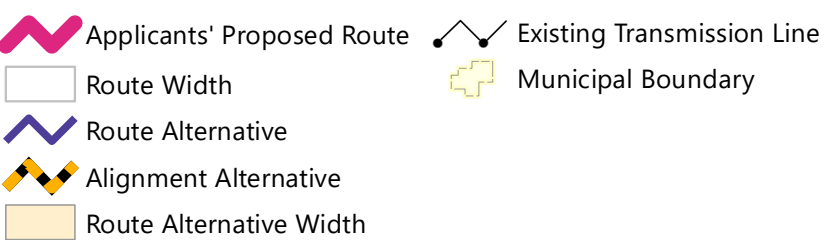
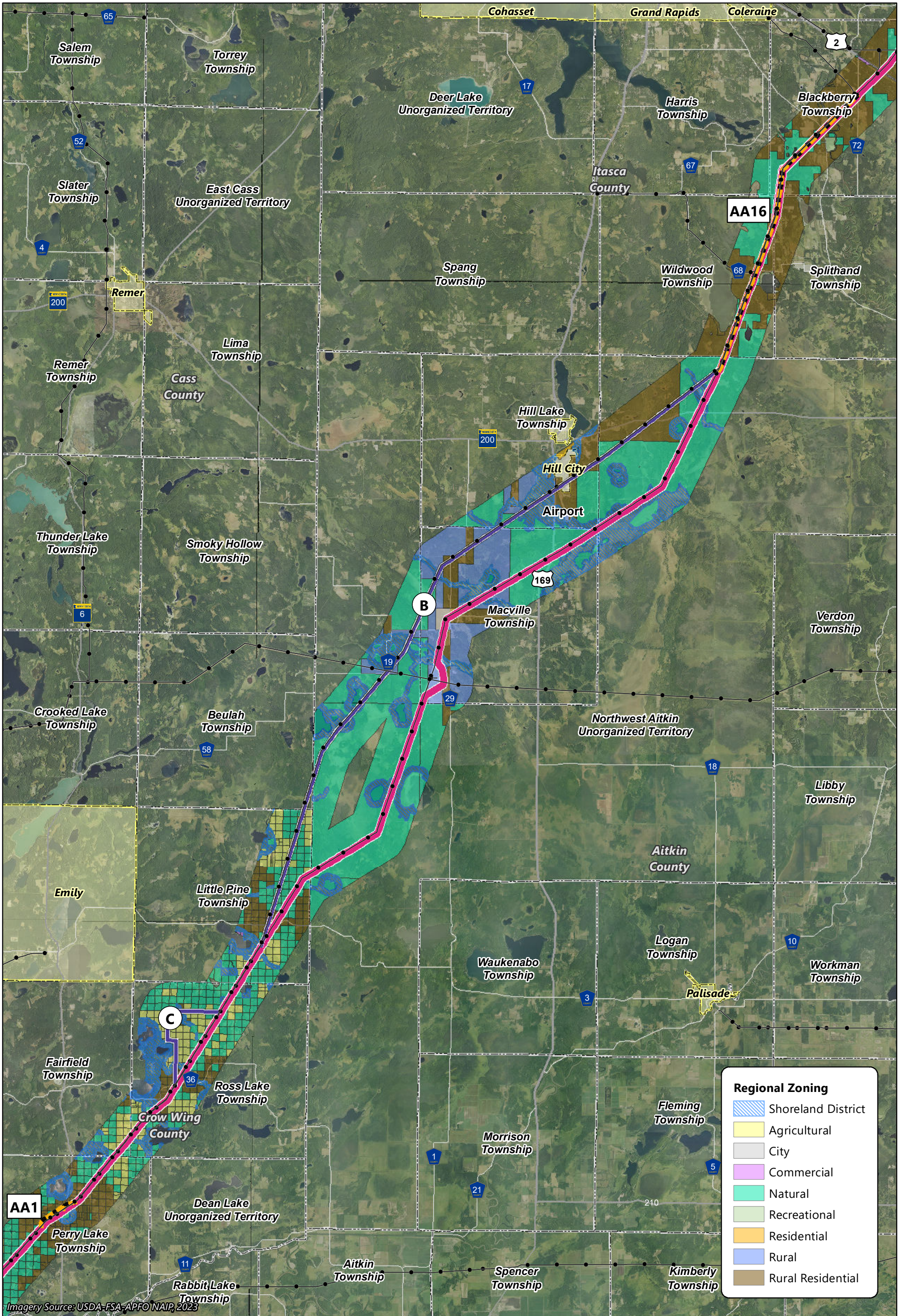


Imagery Source: USDA-FSA-APFO NAIP, 2023

-  Applicants' Proposed Route
-  Existing Transmission Line
-  Route Width
-  Iron Range Substation
-  Route Alternative
-  Substation Siting Area
-  Alignment Alternative
-  Route Alternative Width



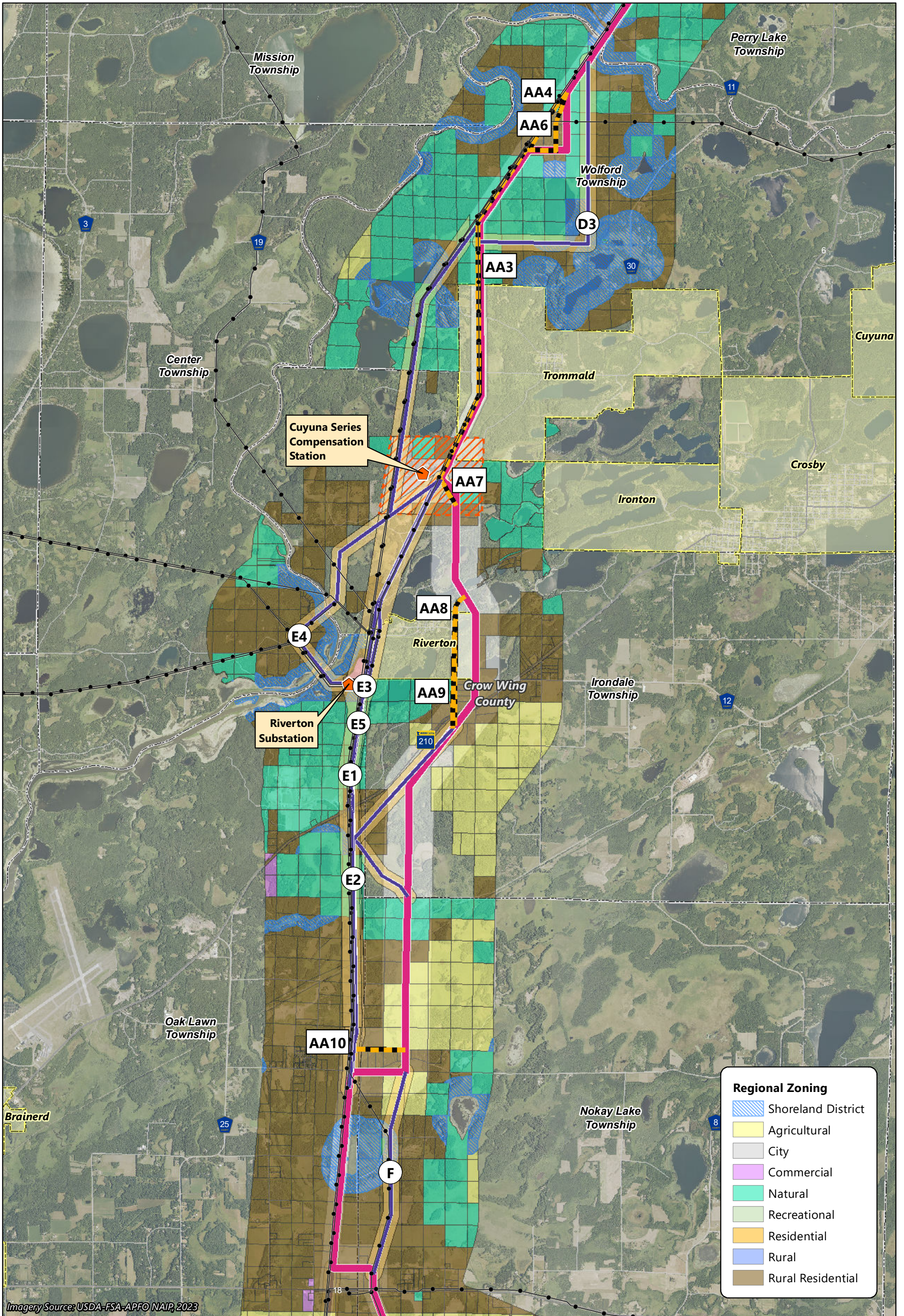
Map 5B-1  
**REGIONAL ZONING MAP**  
 Iron Range Substation Region  
 Northland Reliability Project



Map 5B-2

**REGIONAL ZONING MAP**  
Hill City to Little Pine Region  
Northland Reliability Project

Imagery Source: USDA-FSA-APFO NAIP, 2023



Imagery Source: USDA-FSA-APFO NAIP, 2023

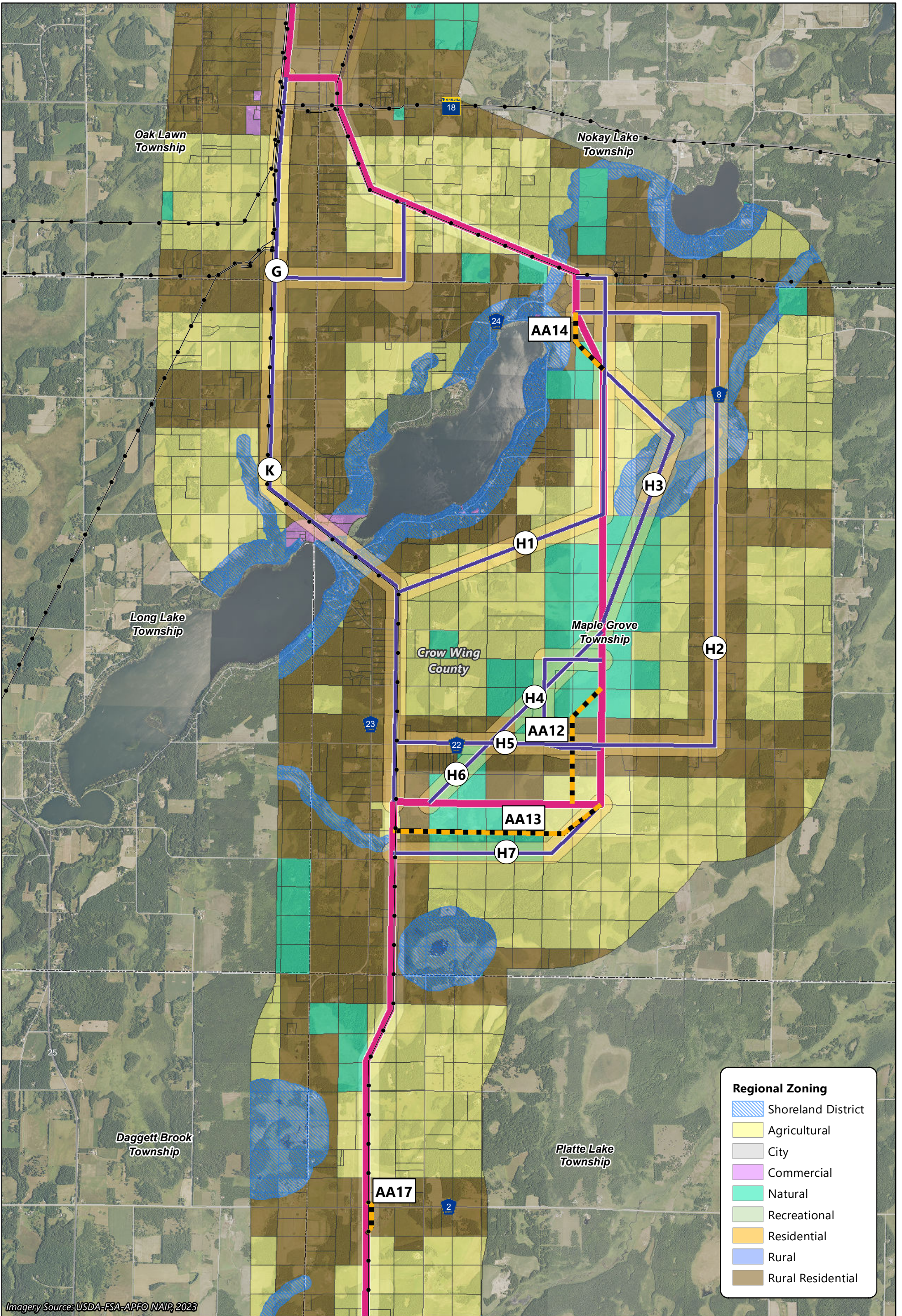
-  Applicants' Proposed Route
-  Route Width
-  Route Alternative
-  Alignment Alternative
-  Route Alternative Width
-  Existing Transmission Line
-  Riverton Substation
-  Cuyuna Series Compensation Station
-  Substation Siting Area
-  Municipal Boundary




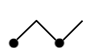



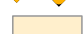
Map 5B-3

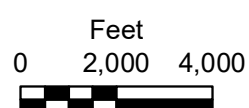
**REGIONAL ZONING MAP**  
 Cole Lake/Riverton Region  
 Northland Reliability Project

- Regional Zoning**
-  Shoreland District
  -  Agricultural
  -  City
  -  Commercial
  -  Natural
  -  Recreational
  -  Residential
  -  Rural
  -  Rural Residential



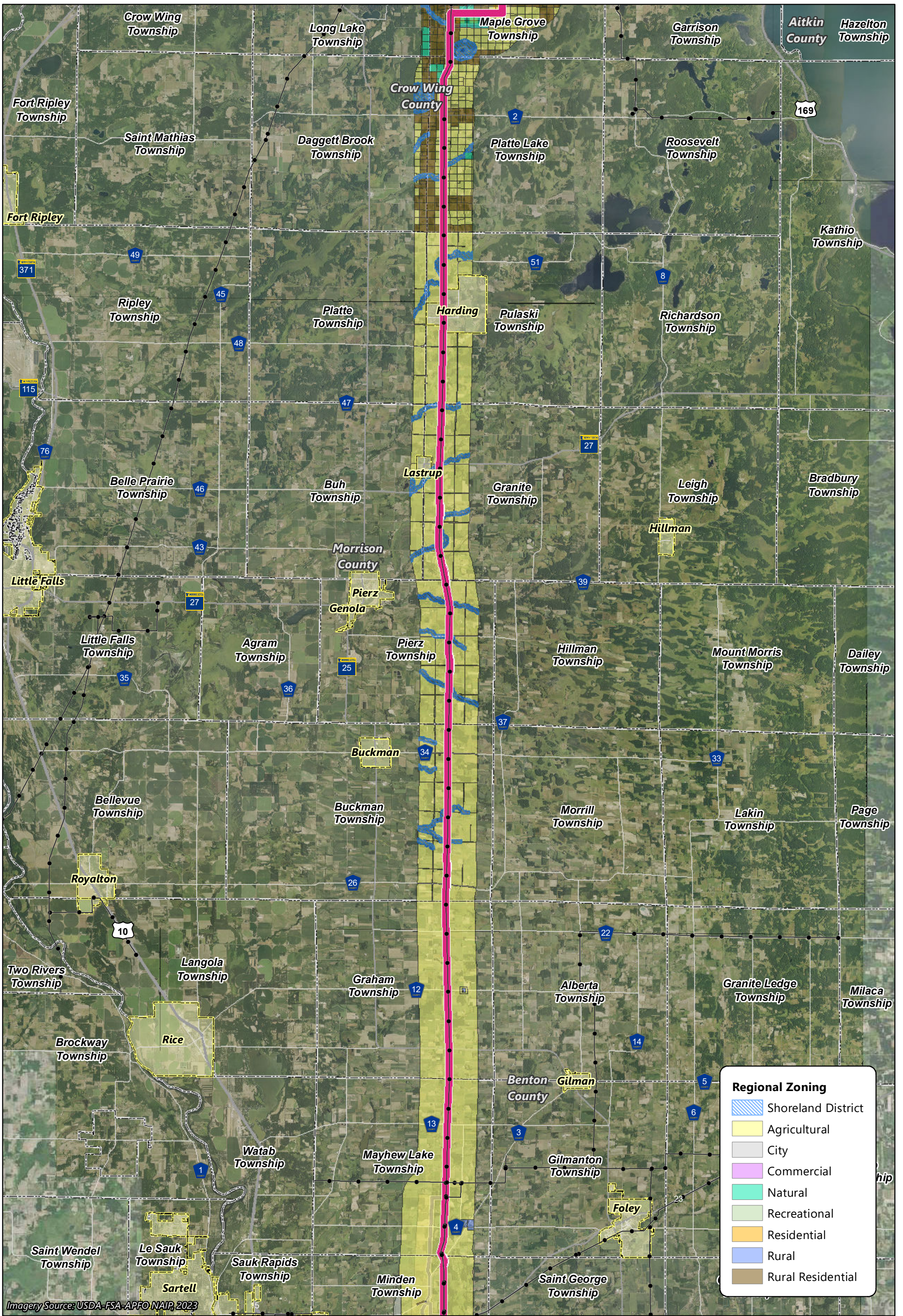
Imagery Source: USDA-FSA-APFO NAIP, 2023






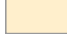

-  Applicants' Proposed Route
-  Existing Transmission Line
-  Route Width
-  Route Alternative
-  Alignment Alternative
-  Route Alternative Width

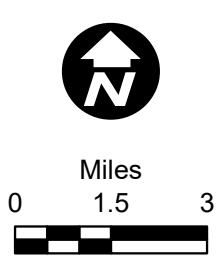


Map 5B-4

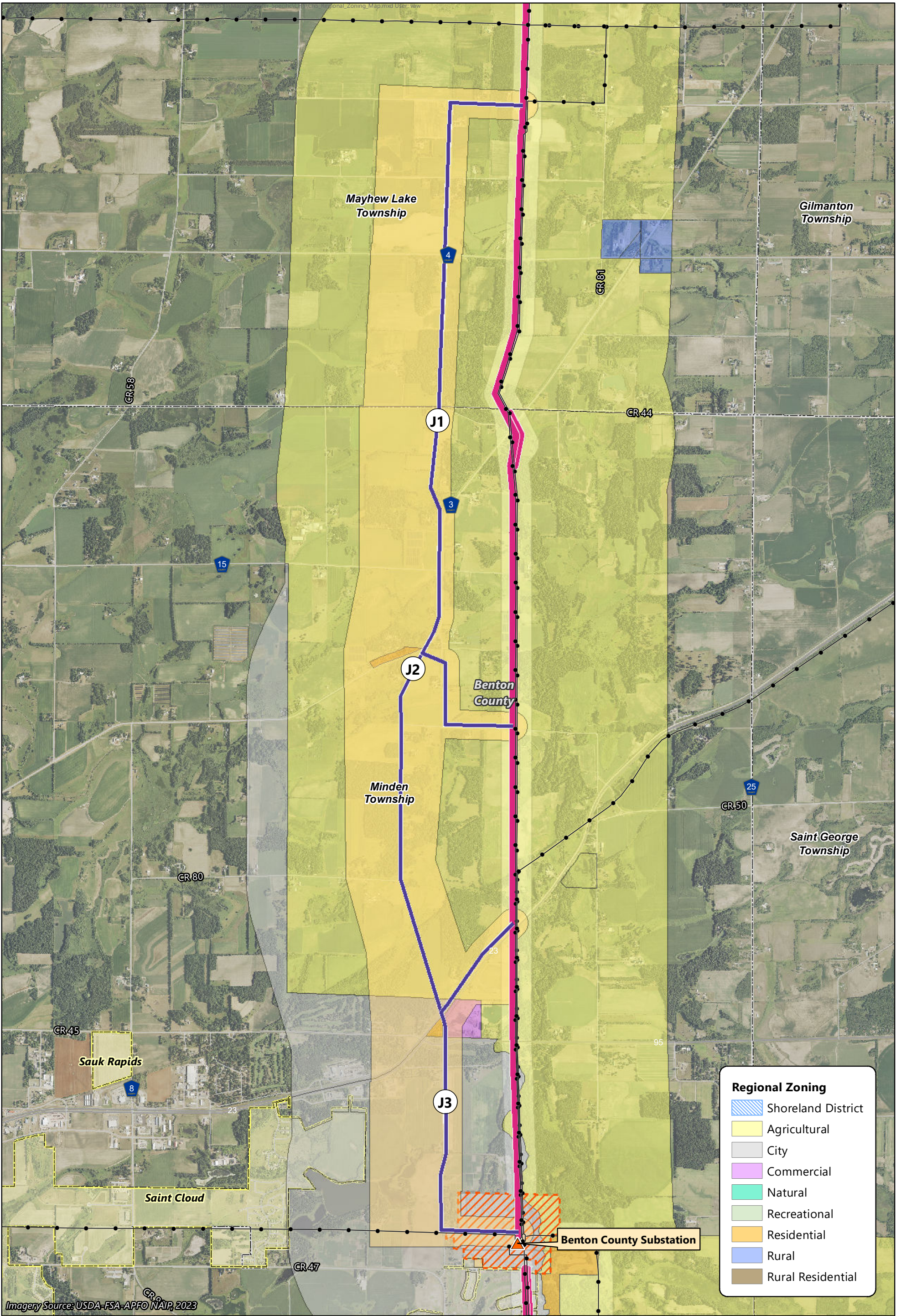
**REGIONAL ZONING MAP**  
 Long Lake Region  
 Northland Reliability Project








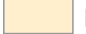



-  Applicants' Proposed Route
-  Existing Transmission Line
-  Route Width
-  Municipal Boundary
-  Route Alternative
-  Alignment Alternative
-  Route Alternative Width



Map 5B-5  
**REGIONAL ZONING MAP**  
 Morrison County Region  
 Northland Reliability Project

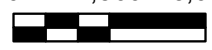


Imagery Source: USDA-FSA-APFO NAIP, 2023

-  Applicants' Proposed Route
-  Existing Transmission Line
-  Route Width
-  Route Alternative
-  Benton County Substation
-  Alignment Alternative
-  Substation Siting Area
-  Route Alternative Width
-  Municipal Boundary



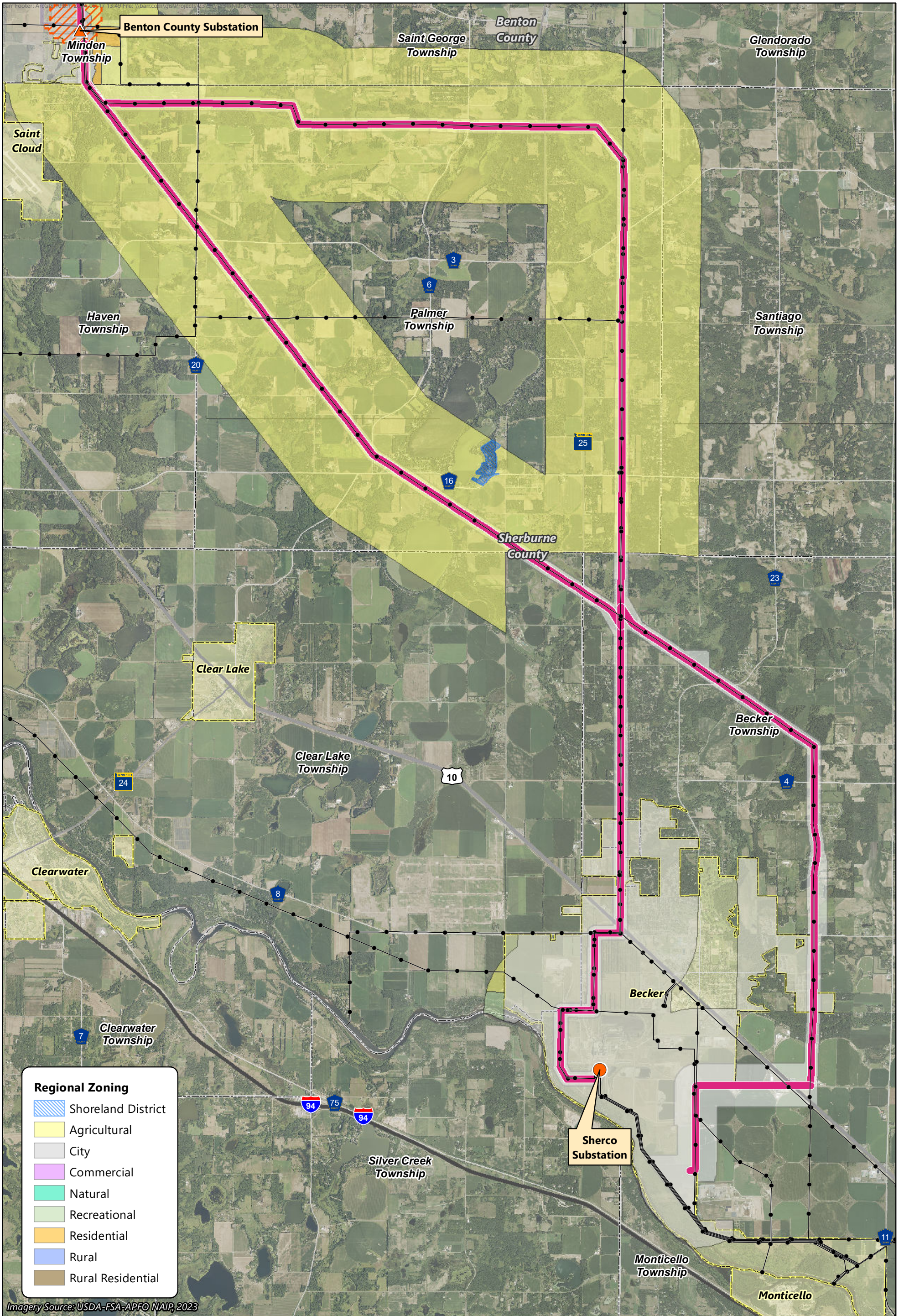
Feet  
0 1,500 3,000




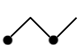








Map 5B-6

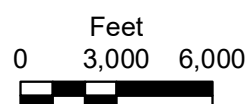
**REGIONAL ZONING MAP**  
Benton County Elk River Region  
Northland Reliability Project

- Regional Zoning**
-  Shoreland District
  -  Agricultural
  -  City
  -  Commercial
  -  Natural
  -  Recreational
  -  Residential
  -  Rural
  -  Rural Residential



Imagery Source: USDA-FSA-APFO NAIP, 2023

-  Applicants' Proposed Route
-  Existing Transmission Line
-  Route Width
-  Route Alternative
-  Alignment Alternative
-  Route Alternative Width
-  Benton County Substation
-  Sherco Substation
-  Substation Siting Area
-  Municipal Boundary



Map 5B-7

**REGIONAL ZONING MAP**  
 Sherburne County Region  
 Northland Reliability Project