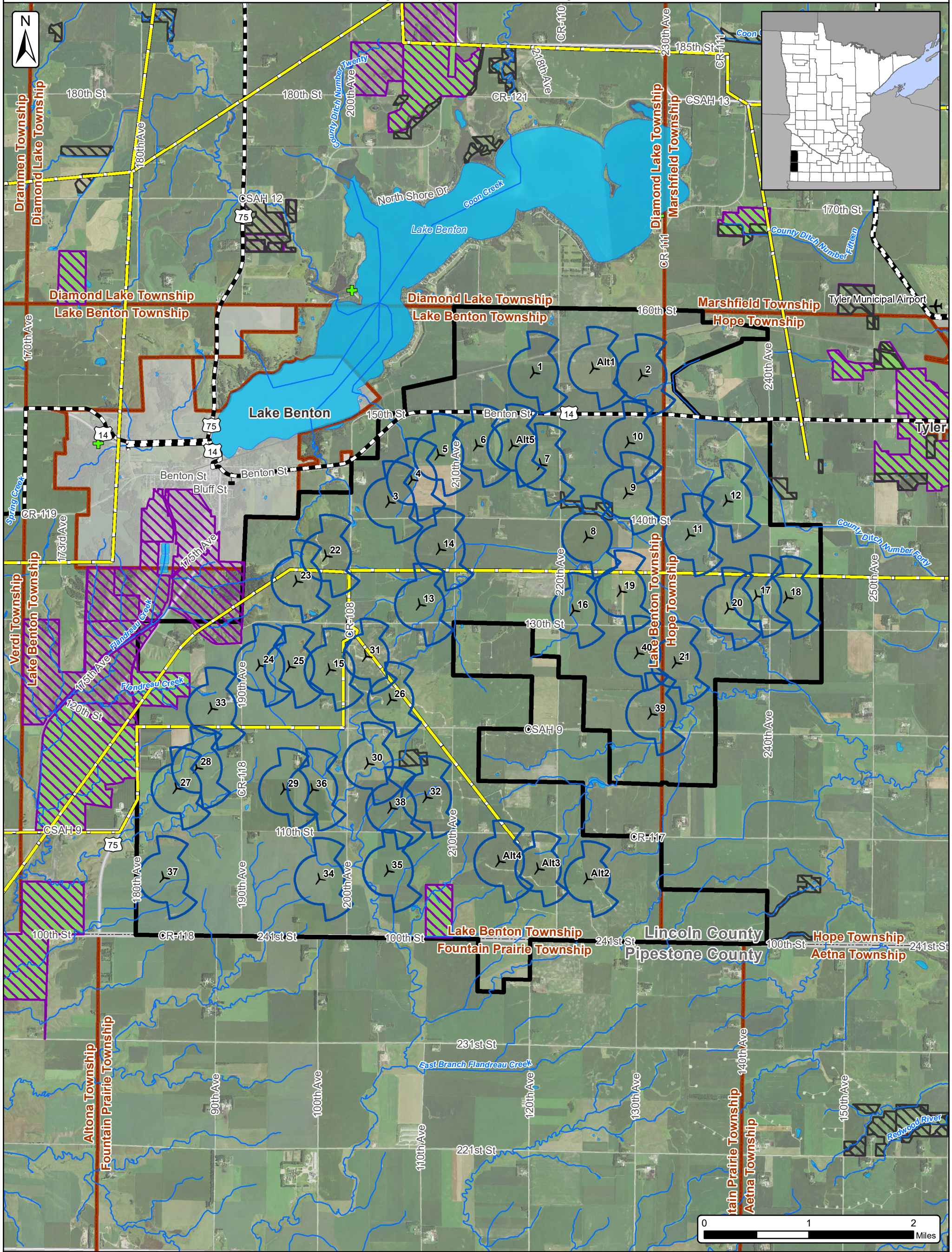


# Buffalo Ridge Wind

## Figure 4 - Turbine Layout and Constraints

Lincoln County & Pipestone County, Minnesota




**COMMERCE  
DEPARTMENT**

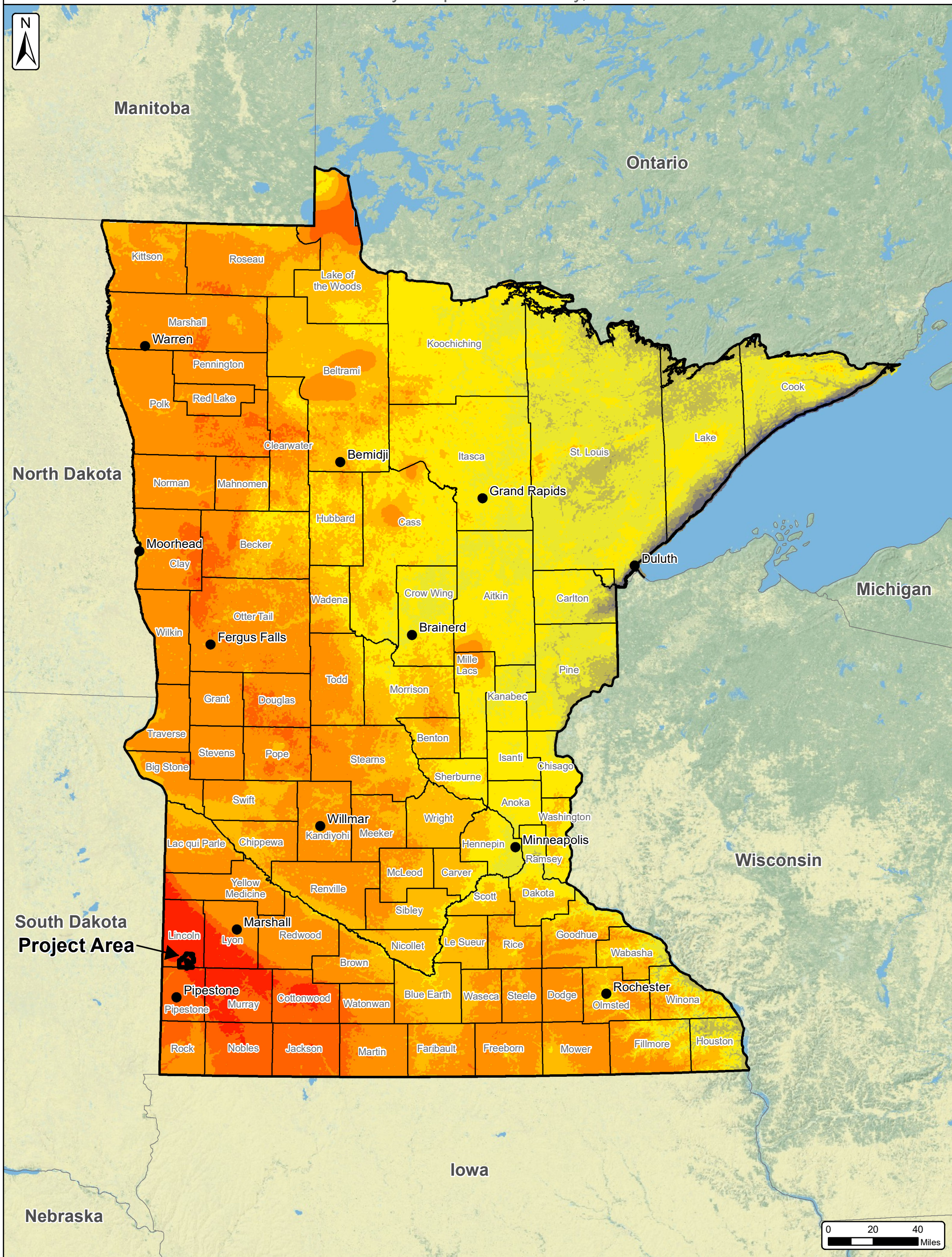
SOURCE: USDA NAIP 2017 IMAGERY

This page is intentionally left blank.

# Buffalo Ridge Wind

## Figure 5A - State Wind Resources Map

Lincoln County & Pipestone County, Minnesota



Wind Speed	
Meters/Second (mph)	
	5.5 - 5.9 (12.3 - 13.2)
	5.9 - 6.3 (13.2 - 14.1)
	6.3 - 6.7 (14.1 - 15)
	6.7 - 7.1 (15 - 15.9)
	7.1 - 7.5 (15.9 - 16.8)
	7.5 - 7.9 (16.8 - 17.7)
	7.9 - 8.3 (17.7 - 18.6)
	8.3 - 8.7 (18.6 - 19.5)
	8.7 - 9.1 (19.5 - 20.4)
	9.1 - 9.5 (20.4 - 21.3)

Project Area  
5/9/2019 (±17,609 Ac.)  
 Counties



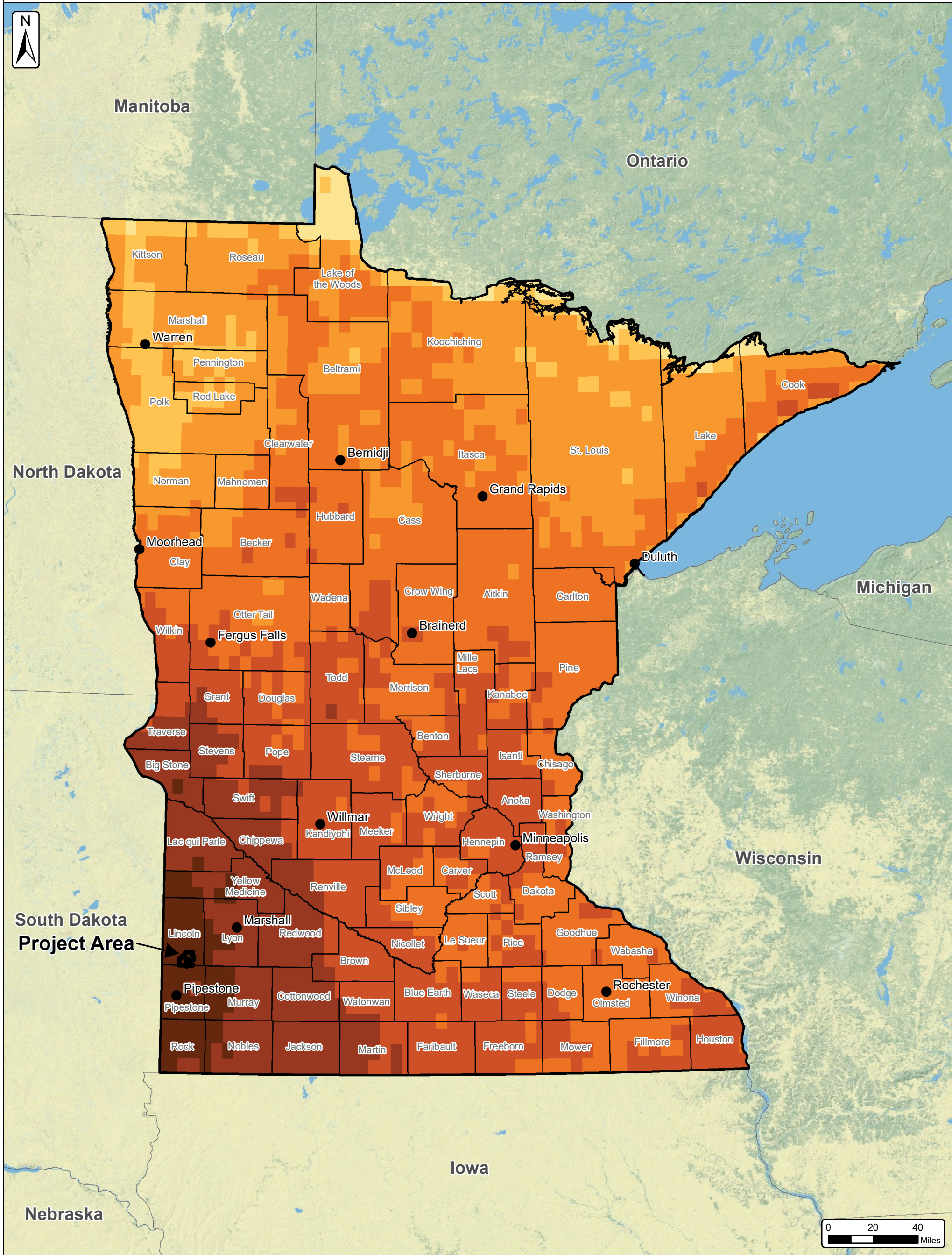
SOURCE: ESRI BASEMAPS

This page is intentionally left blank.

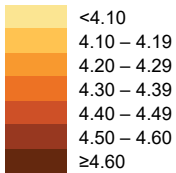
# Buffalo Ridge Wind

## Figure 5B - State Solar Irradiance Map

Lincoln County & Pipestone County, Minnesota



Annual Average Solar Resource  
(SUNY/NREL, 2015)  
kWh/m<sup>2</sup>/Day



Project Area  
5/9/2019 (±17,609 Ac.)

Counties



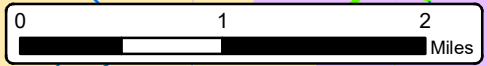
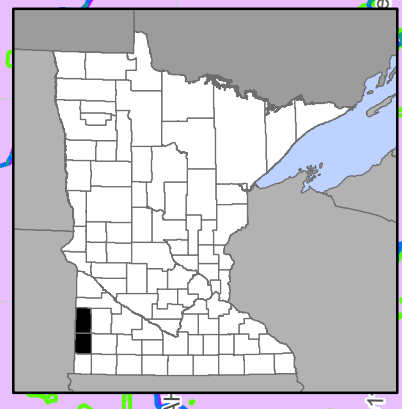
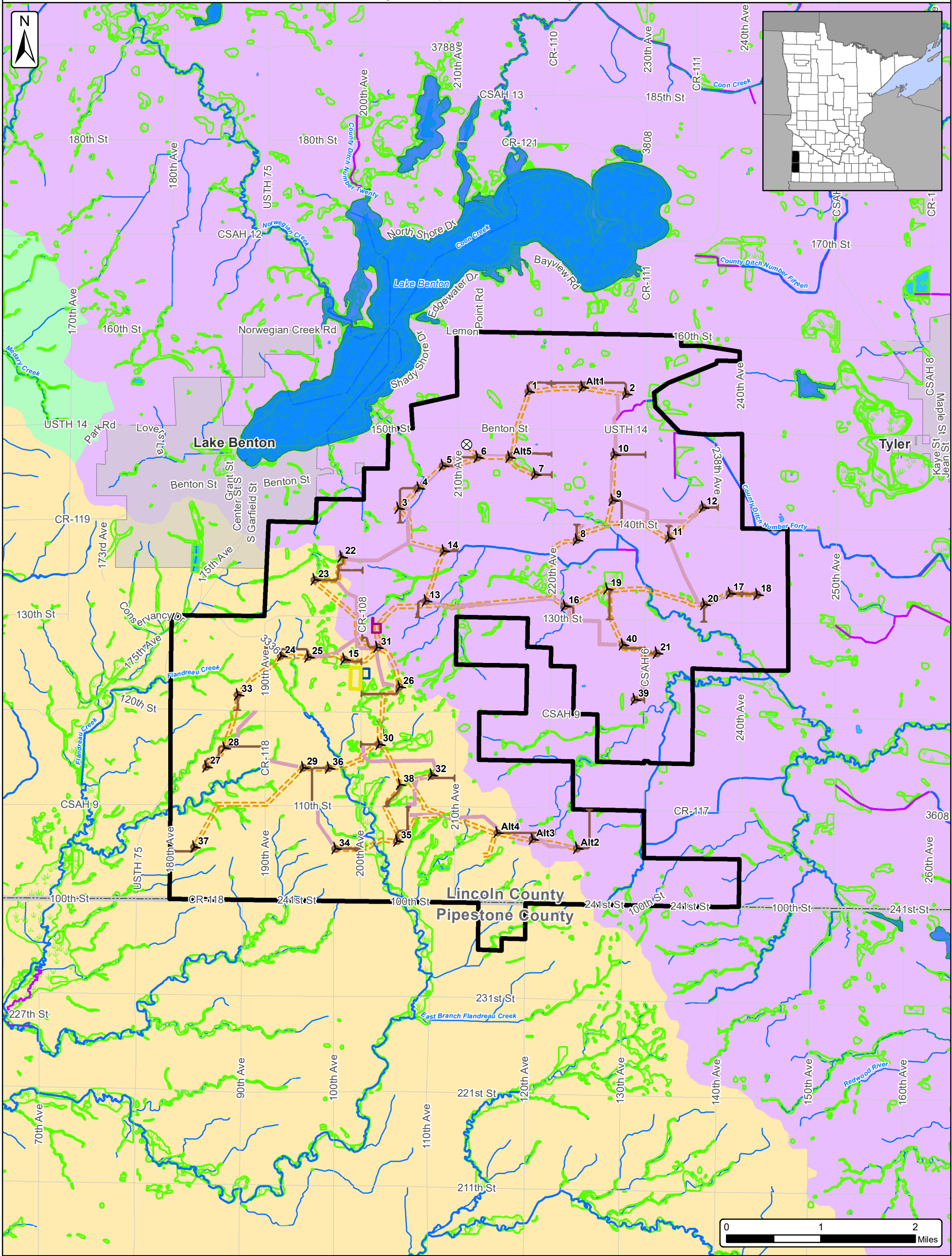
SOURCE: ESRI BASEMAPS

This page is intentionally left blank.

# Buffalo Ridge Wind

## Figure 6 - Surface Water Map

Lincoln County & Pipestone County, Minnesota



- |  |                                  |   |
|--|----------------------------------|---|
| Watercourses (NHD)                     | Wetlands (NWI with MNDNR Update) | Turbine Layout (5/22/2020)                  |
| Waterbodies (NHD)                      | Watersheds (NHD- HUC8)           | MET Tower                                   |
| Assessed Streams (MNDNR)               | Lower Big Sioux                  | Access Road (5/22/2020)                     |
| Public Watercourses (MNDNR)            | Middle Big Sioux                 | Preliminary Crane Paths                     |
| Buffer Protection Watercourses (MNDNR) | Redwood                          | Collection Corridor (5/20/2020)             |
| Public Water Basin (MNDNR)             |                                  | O&M Area (05/16/2019)                       |
|  |                                  | Proposed Substation (03/29/2019)            |
|  |                                  | Potential Laydown/ Batch Plant (07/25/2019) |

Project Area 5/9/2019 (±17,609 Ac.)

Cities

Counties

**COMMERCE DEPARTMENT**

SOURCE: NHD WATERSHEDS

This page is intentionally left blank.