

| | | |
|-------------------------------|---------------------------------|------------------------------------|
| Proposed Pipeline - Sandpiper | Milepost - Sandpiper | Tract Boundary |
| Existing Enbridge Pipelines | Potential Block Valve | Facility Boundary |
| Foreign Pipes | Environmental Survey Area (ESA) | Previously Sited Facility Boundary |
| Transmission Lines | | Section Lines |
| SPREAD BREAK | | |

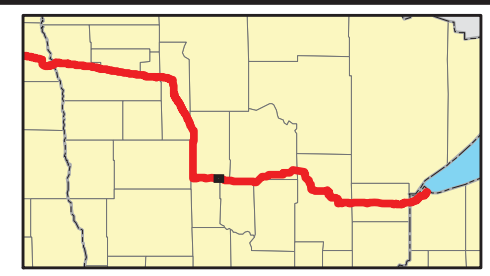
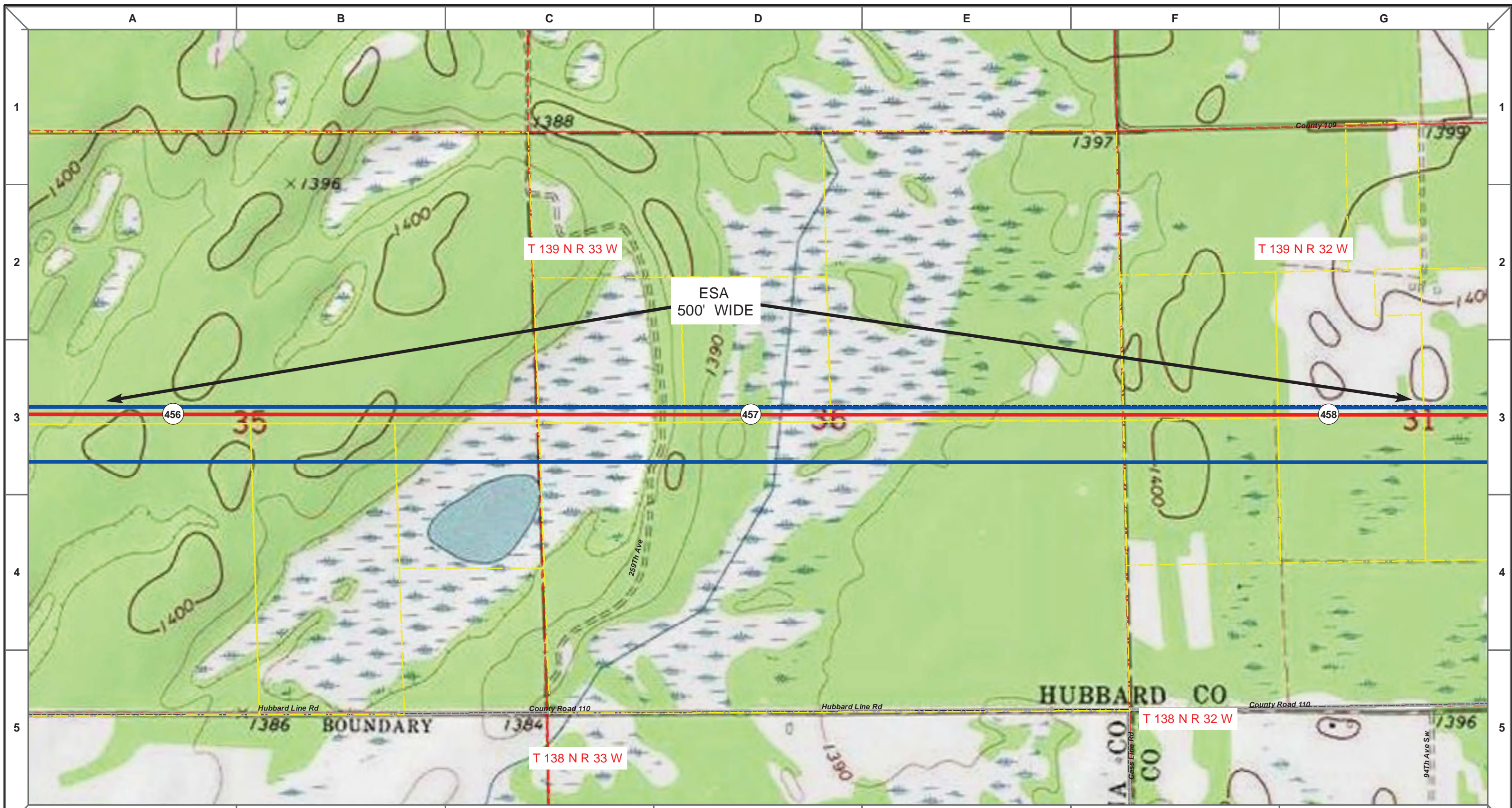
| | | | | | |
|-------|---------|----------|------|---------|---------------|
| MLB | | 10/10/13 | 0 | | |
| DRAWN | CHECKED | APPROVED | DATE | REV NO. | DESCRIPTION |
| | | | | | PUC Submittal |

ENBRIDGE PIPELINES (NORTH DAKOTA) LLC

**PROPOSED SANDPIPER PIPELINE PROJECT
ROUTE MAP
Hubbard County, MN**

| | |
|--------------------|-----------------|
| DRAWN: MLB | CHECKED: -- |
| DATE: Oct 18, 2013 | SCALE: AS SHOWN |

Spread: 7 Map: 67 of 128



| | | |
|-------------------------------|---------------------------------|------------------------------------|
| Proposed Pipeline - Sandpiper | Milepost - Sandpiper | Tract Boundary |
| Existing Enbridge Pipelines | Potential Block Valve | Facility Boundary |
| Foreign Pipes | Environmental Survey Area (ESA) | Previously Sited Facility Boundary |
| Transmission Lines | | Section Lines |
| SPREAD BREAK | | |

500 250 0 500 1,000 Feet

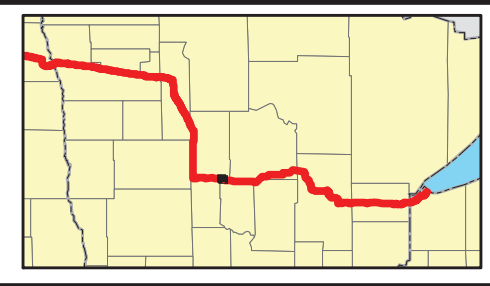
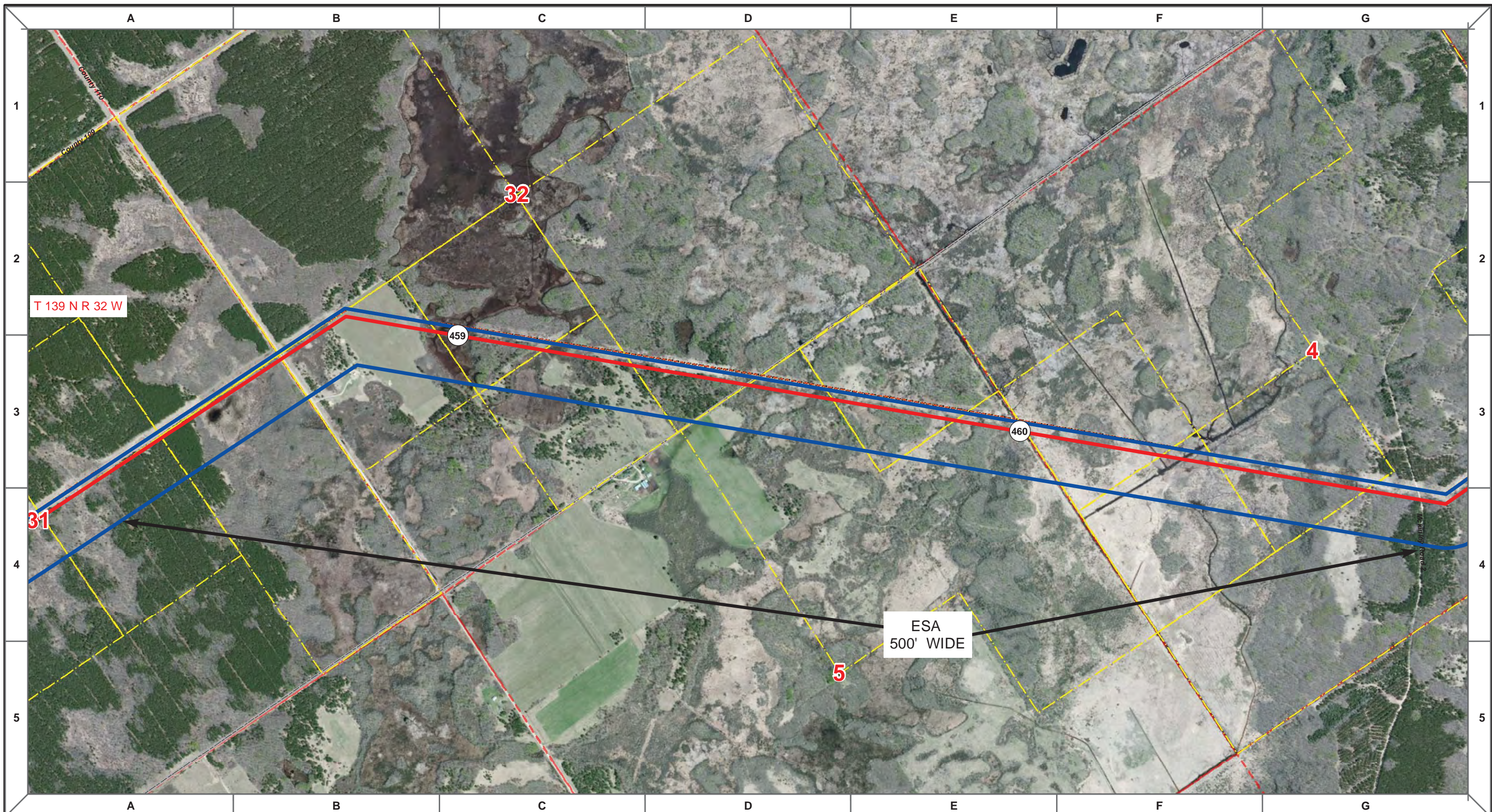
| MLB | DATE | REV NO. | DESCRIPTION |
|-----|----------|---------|---------------|
| | 10/10/13 | 0 | PUC Submittal |
| | | | |
| | | | |
| | | | |
| | | | |
| | | | |
| | | | |
| | | | |
| | | | |

ENBRIDGE PIPELINES (NORTH DAKOTA) LLC

**PROPOSED SANDPIPER PIPELINE PROJECT
ROUTE MAP
Hubbard County, MN**

| | |
|---------------------------|------------------------|
| DRAWN: MLB | CHECKED: -- |
| DATE: Oct 18, 2013 | SCALE: AS SHOWN |

Spread: 7 Map: 67 of 128



| | | |
|-------------------------------|---------------------------------|------------------------------------|
| Proposed Pipeline - Sandpiper | Milepost - Sandpiper | Tract Boundary |
| Existing Enbridge Pipelines | Potential Block Valve | Facility Boundary |
| Foreign Pipes | Environmental Survey Area (ESA) | Previously Sited Facility Boundary |
| Transmission Lines | | Section Lines |
| SPREAD BREAK | | |

500 250 0 500 1,000 Feet

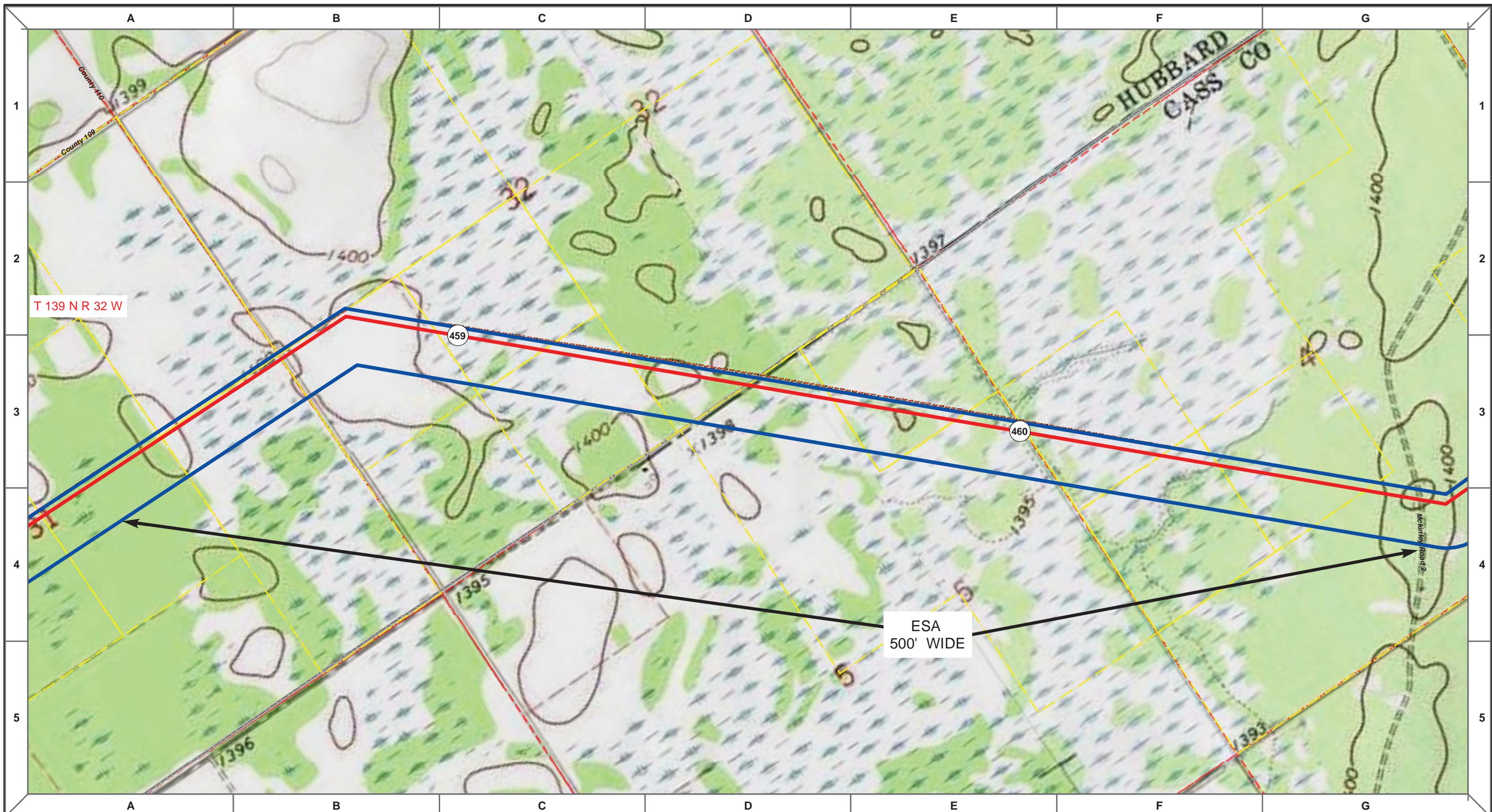
| DRAWN | CHECKED | APPROVED | DATE | REV NO. | DESCRIPTION |
|-------|---------|----------|----------|---------|---------------|
| MLB | | | 10/10/13 | 0 | PUC Submittal |
| | | | | | |
| | | | | | |
| | | | | | |
| | | | | | |

ENBRIDGE PIPELINES (NORTH DAKOTA) LLC

PROPOSED SANDPIPER PIPELINE PROJECT
ROUTE MAP
Hubbard & Cass County, MN

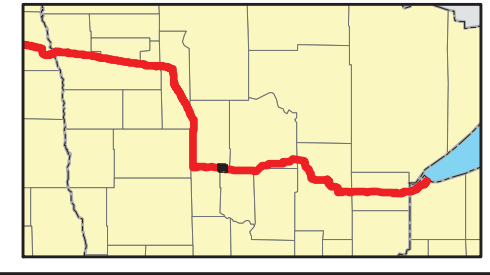
| | |
|-----------------------------------|--------------------------------|
| <small>DRAWN:</small> MLB | <small>CHECKED:</small> -- |
| <small>DATE:</small> Oct 18, 2013 | <small>SCALE:</small> AS SHOWN |

Spread:7 Map: 68 of 128



T 139 N R 32 W

ESA
500' WIDE



| | | |
|-------------------------------|---------------------------------|------------------------------------|
| Proposed Pipeline - Sandpiper | Milepost - Sandpiper | Tract Boundary |
| Existing Enbridge Pipelines | Potential Block Valve | Facility Boundary |
| Foreign Pipes | Environmental Survey Area (ESA) | Previously Sited Facility Boundary |
| Transmission Lines | | Section Lines |
| SPREAD BREAK | | |

500 250 0 500 1,000 Feet

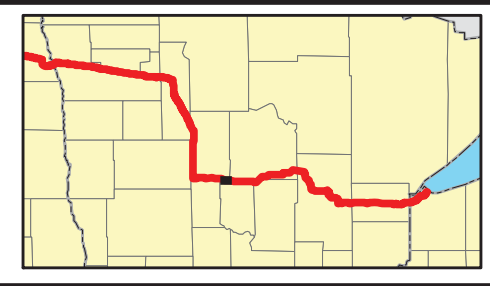
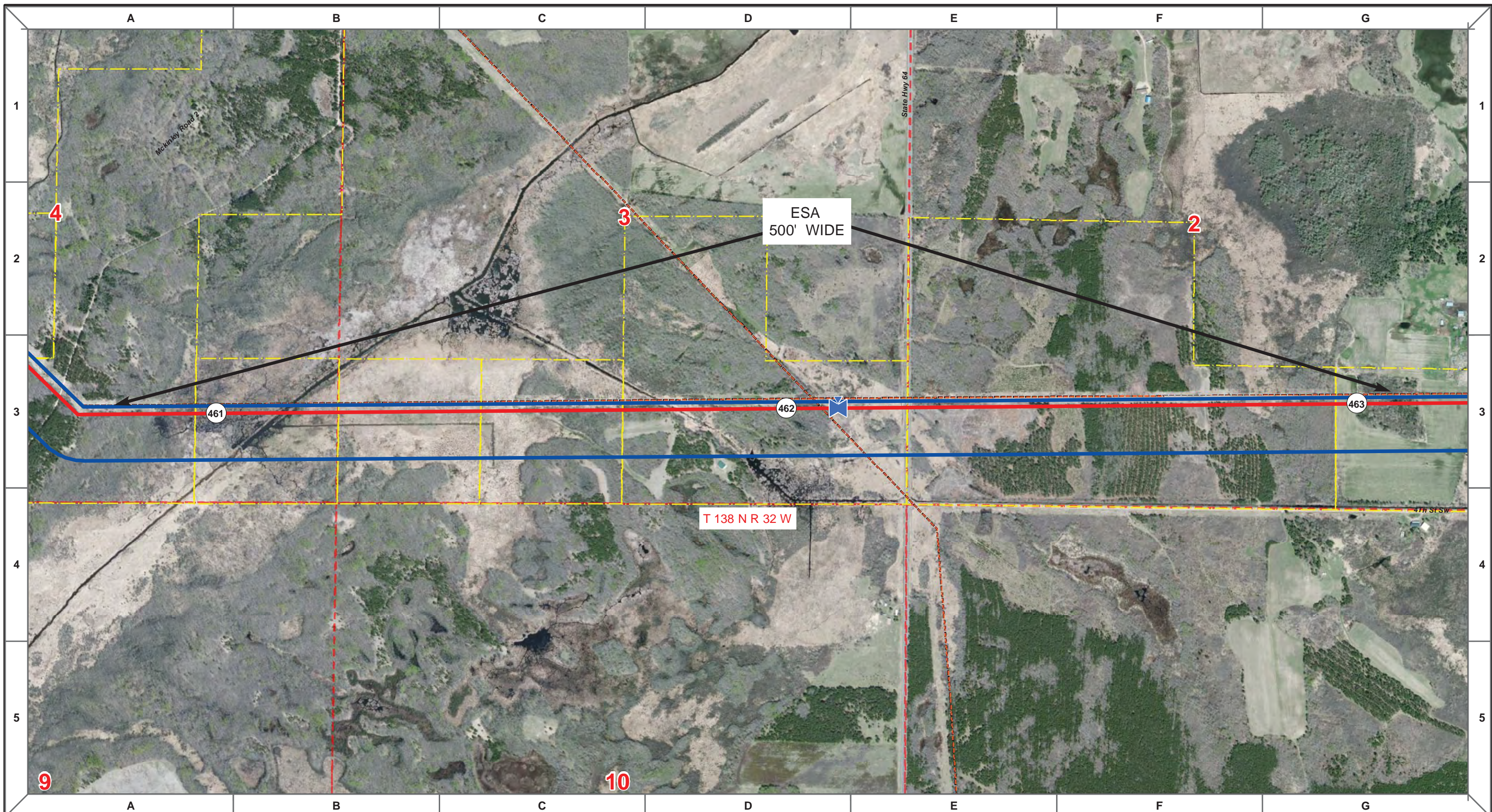
| | | | | | |
|-------|---------|----------|------|---------|---------------|
| MLB | | 10/10/13 | 0 | | PUC Submittal |
| DRAWN | CHECKED | APPROVED | DATE | REV NO. | DESCRIPTION |

ENBRIDGE PIPELINES (NORTH DAKOTA) LLC

PROPOSED SANDPIPER PIPELINE PROJECT
ROUTE MAP
Hubbard & Cass County, MN

| | |
|--------------------|-----------------|
| DRAWN: MLB | CHECKED: -- |
| DATE: Oct 18, 2013 | SCALE: AS SHOWN |

Spread:7 Map: 68 of 128



| | | |
|-------------------------------|---------------------------------|------------------------------------|
| Proposed Pipeline - Sandpiper | Milepost - Sandpiper | Tract Boundary |
| Existing Enbridge Pipelines | Potential Block Valve | Facility Boundary |
| Foreign Pipes | Environmental Survey Area (ESA) | Previously Sited Facility Boundary |
| Transmission Lines | | Section Lines |
| SPREAD BREAK | | |

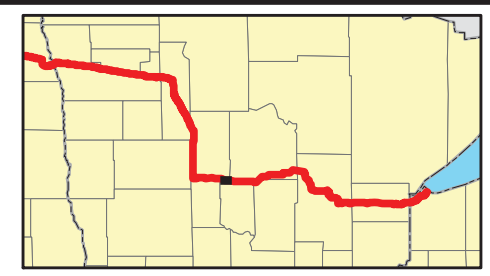
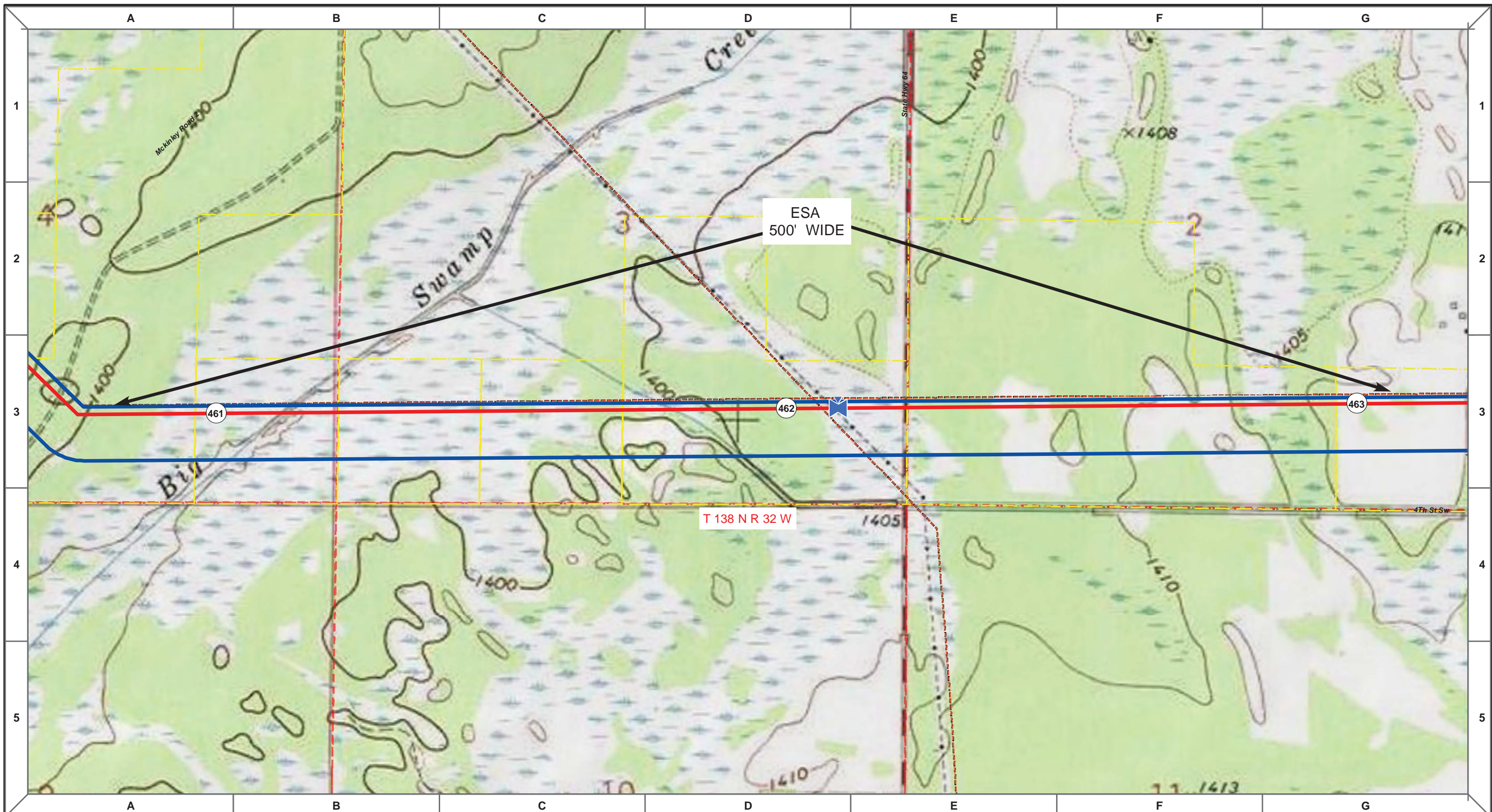
| | | | | | |
|-------|---------|----------|------|---------|-------------|
| MLB | | 10/10/13 | 0 | | |
| DRAWN | CHECKED | APPROVED | DATE | REV NO. | DESCRIPTION |

ENBRIDGE PIPELINES (NORTH DAKOTA) LLC

PROPOSED SANDPIPER PIPELINE PROJECT
ROUTE MAP
Cass County, MN

| | |
|--------------------|-----------------|
| DRAWN: MLB | CHECKED: -- |
| DATE: Oct 18, 2013 | SCALE: AS SHOWN |

Spread:7 Map: 69 of 128



| | | |
|-------------------------------|---------------------------------|------------------------------------|
| Proposed Pipeline - Sandpiper | Milepost - Sandpiper | Tract Boundary |
| Existing Enbridge Pipelines | Potential Block Valve | Facility Boundary |
| Foreign Pipes | Environmental Survey Area (ESA) | Previously Sited Facility Boundary |
| Transmission Lines | | Section Lines |
| SPREAD BREAK | | |

500 250 0 500 1,000 Feet

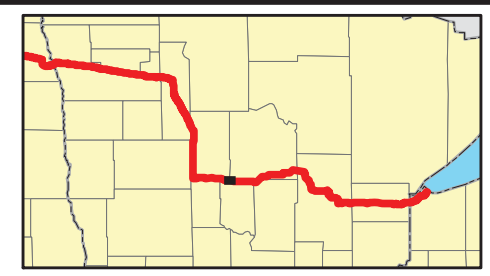
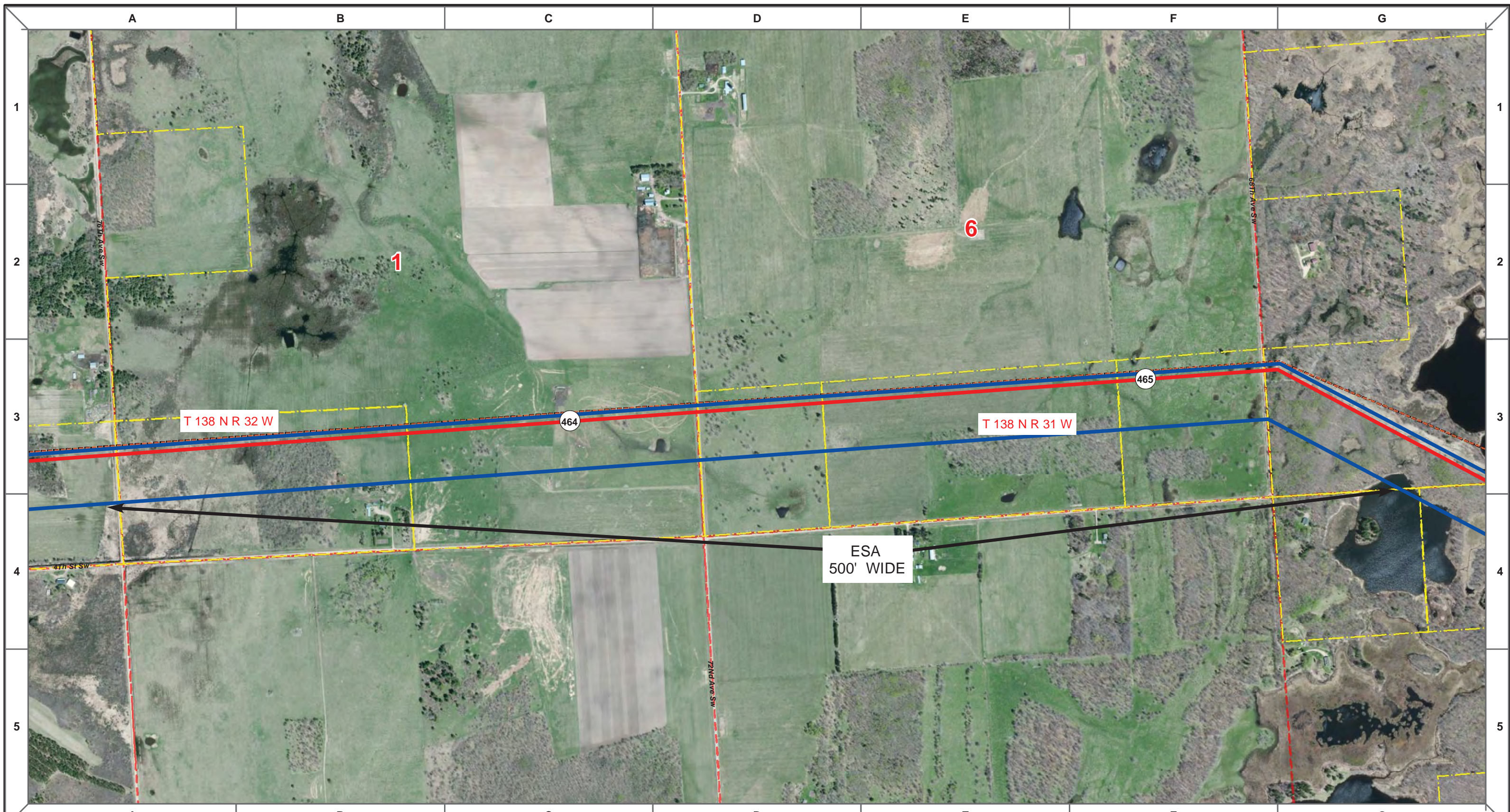
| MLB | DATE | REV NO. | DESCRIPTION |
|-----|----------|---------|---------------|
| | 10/10/13 | 0 | PUC Submittal |
| | | | |
| | | | |
| | | | |
| | | | |
| | | | |
| | | | |
| | | | |
| | | | |

ENBRIDGE PIPELINES (NORTH DAKOTA) LLC

PROPOSED SANDPIPER PIPELINE PROJECT
ROUTE MAP
Cass County, MN

| | |
|---------------------------|------------------------|
| DRAWN: <i>MLB</i> | CHECKED: <i>--</i> |
| DATE: <i>Oct 18, 2013</i> | SCALE: <i>AS SHOWN</i> |

Spread:7 Map: 69 of 128



| | | |
|-------------------------------|---------------------------------|------------------------------------|
| Proposed Pipeline - Sandpiper | Milepost - Sandpiper | Tract Boundary |
| Existing Enbridge Pipelines | Potential Block Valve | Facility Boundary |
| Foreign Pipes | Environmental Survey Area (ESA) | Previously Sited Facility Boundary |
| Transmission Lines | | Section Lines |
| SPREAD BREAK | | |

500 250 0 500 1,000 Feet

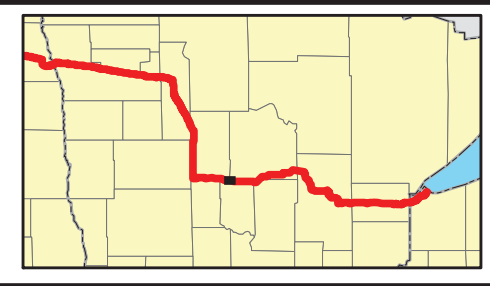
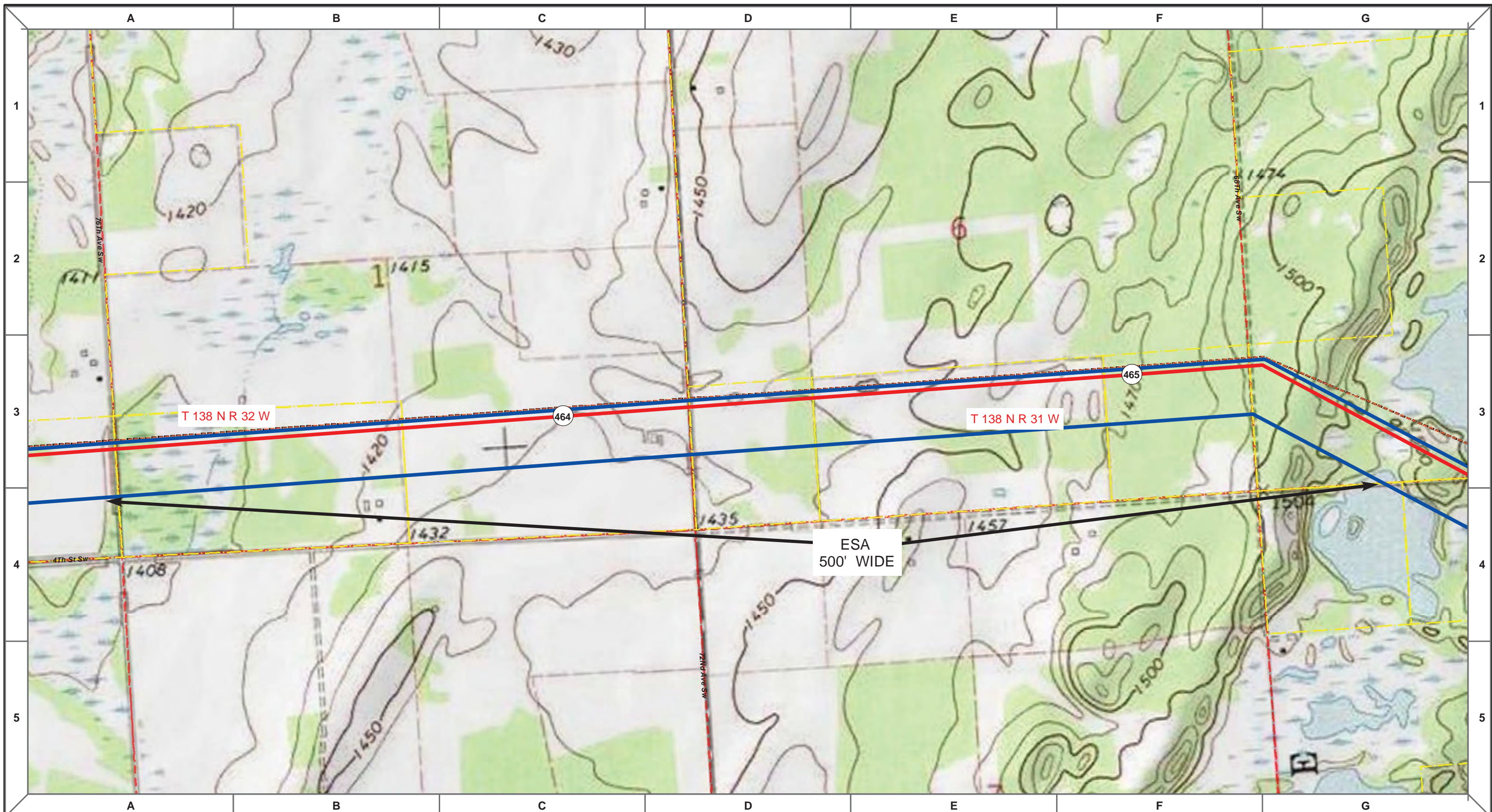
| | | | | | |
|-------|---------|----------|------|---------|-------------|
| MLB | | 10/10/13 | 0 | | |
| DRAWN | CHECKED | APPROVED | DATE | REV NO. | DESCRIPTION |
| | | | | | |
| | | | | | |
| | | | | | |
| | | | | | |

ENBRIDGE PIPELINES (NORTH DAKOTA) LLC

**PROPOSED SANDPIPER
PIPELINE PROJECT
ROUTE MAP
Cass County, MN**

| | |
|---------------------------|------------------------|
| DRAWN: MLB | CHECKED: -- |
| DATE: Oct 18, 2013 | SCALE: AS SHOWN |

Spread:7 Map: 70 of 128



| | | |
|-------------------------------|---------------------------------|------------------------------------|
| Proposed Pipeline - Sandpiper | Milepost - Sandpiper | Tract Boundary |
| Existing Enbridge Pipelines | Potential Block Valve | Facility Boundary |
| Foreign Pipes | Environmental Survey Area (ESA) | Previously Sited Facility Boundary |
| Transmission Lines | | Section Lines |
| SPREAD BREAK | | |

500 250 0 500 1,000 Feet

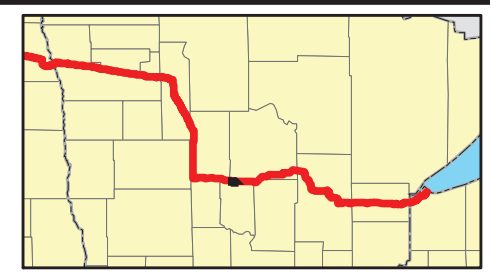
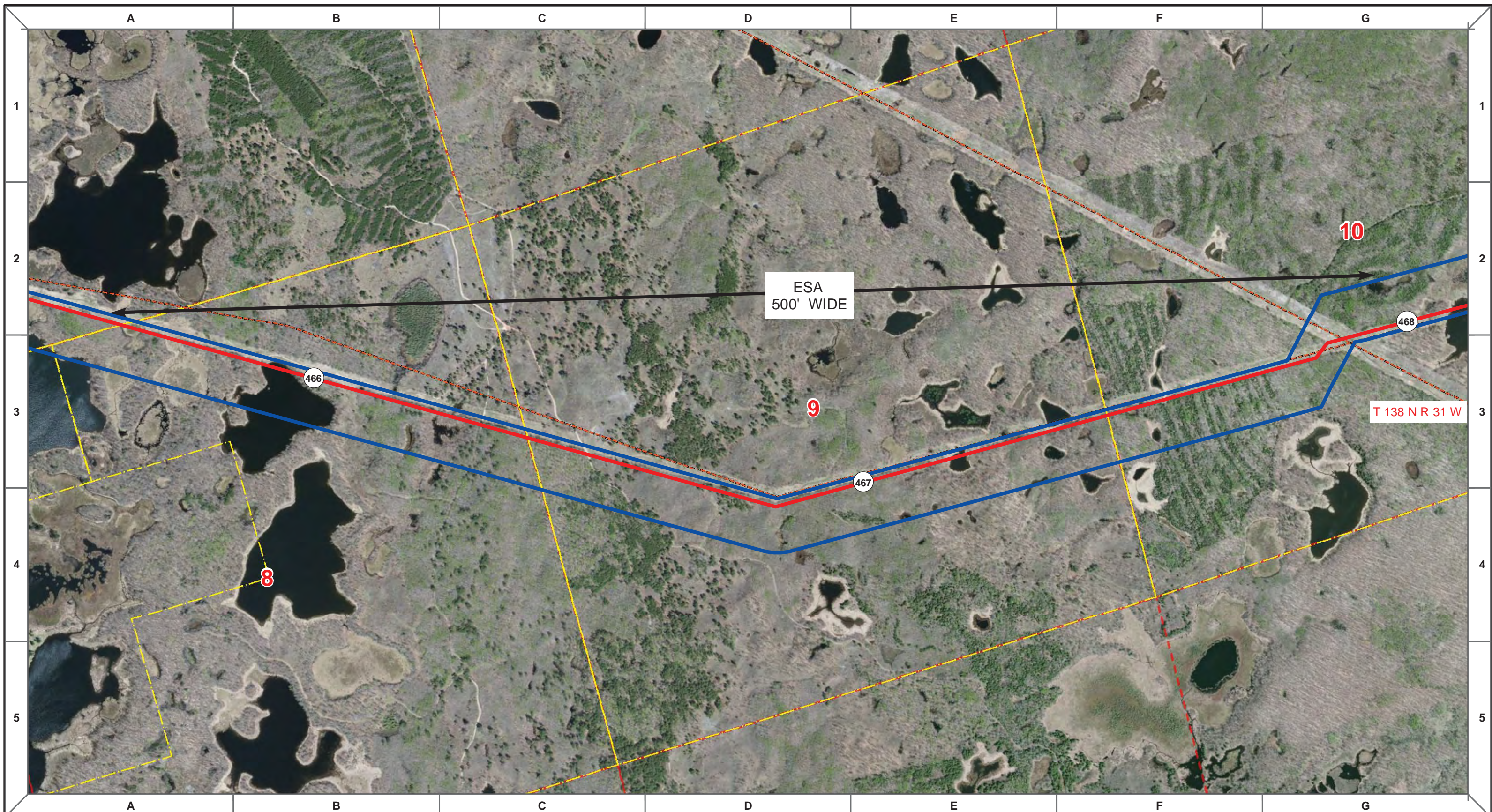
| MLB | DATE | REV NO. | DESCRIPTION |
|-----|----------|---------|---------------|
| | 10/10/13 | 0 | PUC Submittal |
| | | | |
| | | | |
| | | | |
| | | | |
| | | | |
| | | | |
| | | | |
| | | | |
| | | | |
| | | | |

ENBRIDGE PIPELINES (NORTH DAKOTA) LLC

**PROPOSED SANDPIPER PIPELINE PROJECT
ROUTE MAP
Cass County, MN**

| | |
|---------------------------|------------------------|
| DRAWN: MLB | CHECKED: -- |
| DATE: Oct 18, 2013 | SCALE: AS SHOWN |

Spread:7 Map: 70 of 128



| | | |
|-------------------------------|---------------------------------|------------------------------------|
| Proposed Pipeline - Sandpiper | Milepost - Sandpiper | Tract Boundary |
| Existing Enbridge Pipelines | Potential Block Valve | Facility Boundary |
| Foreign Pipes | Environmental Survey Area (ESA) | Previously Sited Facility Boundary |
| Transmission Lines | | Section Lines |
| SPREAD BREAK | | |

500 250 0 500 1,000 Feet

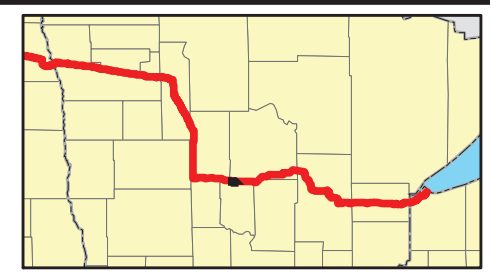
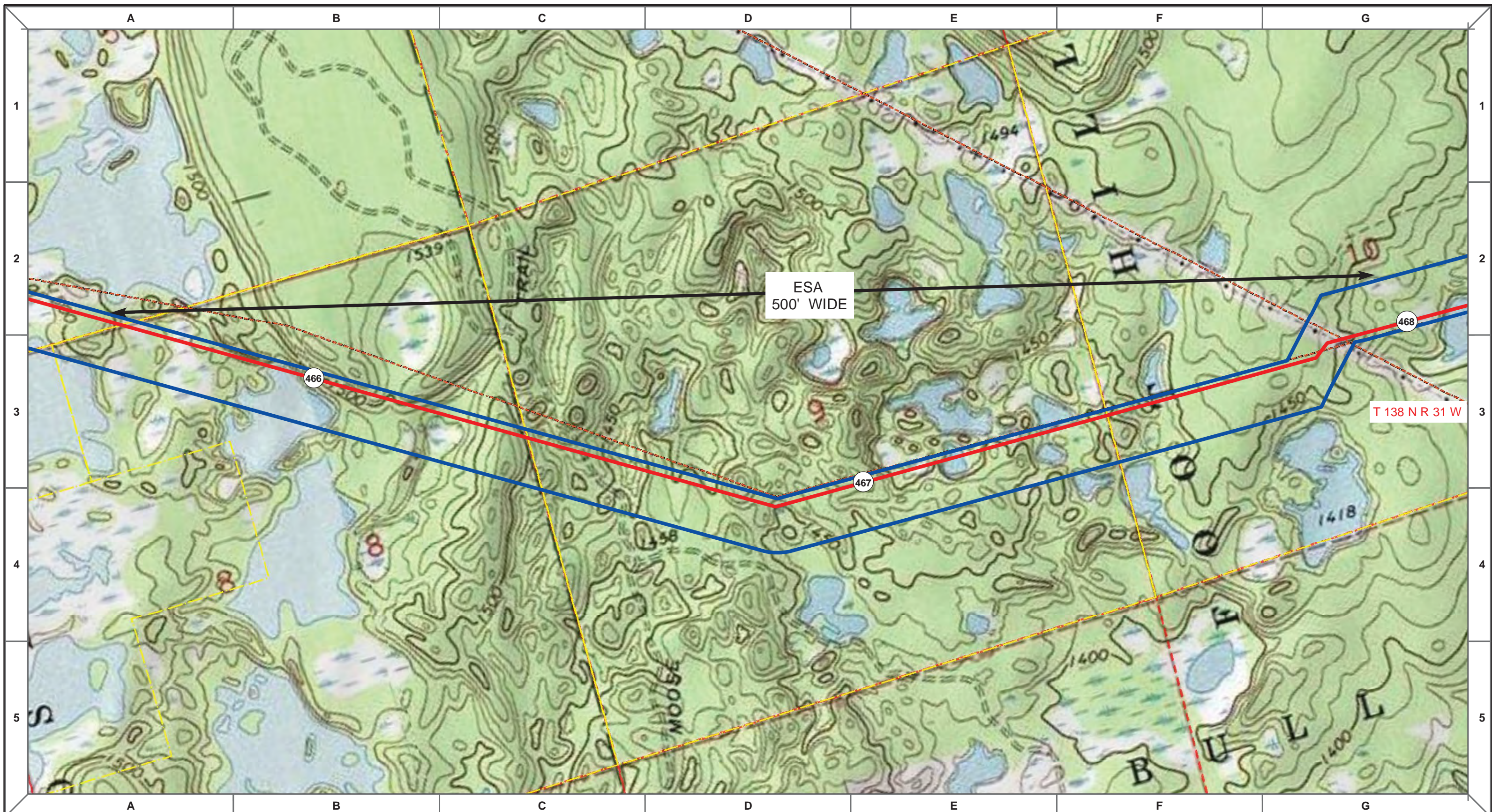
| DRAWN | CHECKED | APPROVED | DATE | REV. NO. | DESCRIPTION |
|-------|---------|----------|----------|----------|---------------|
| MLB | | | 10/10/13 | 0 | PUC Submittal |
| | | | | | |
| | | | | | |
| | | | | | |
| | | | | | |

ENBRIDGE PIPELINES (NORTH DAKOTA) LLC

PROPOSED SANDPIPER PIPELINE PROJECT
ROUTE MAP
Cass County, MN

| | |
|-----------------------------------|--------------------------------|
| <small>DRAWN:</small> MLB | <small>CHECKED:</small> -- |
| <small>DATE:</small> Oct 18, 2013 | <small>SCALE:</small> AS SHOWN |

Spread:7 Map: 71 of 128



| | | |
|-------------------------------|---------------------------------|------------------------------------|
| Proposed Pipeline - Sandpiper | Milepost - Sandpiper | Tract Boundary |
| Existing Enbridge Pipelines | Potential Block Valve | Facility Boundary |
| Foreign Pipes | Environmental Survey Area (ESA) | Previously Sited Facility Boundary |
| Transmission Lines | | Section Lines |
| SPREAD BREAK | | |

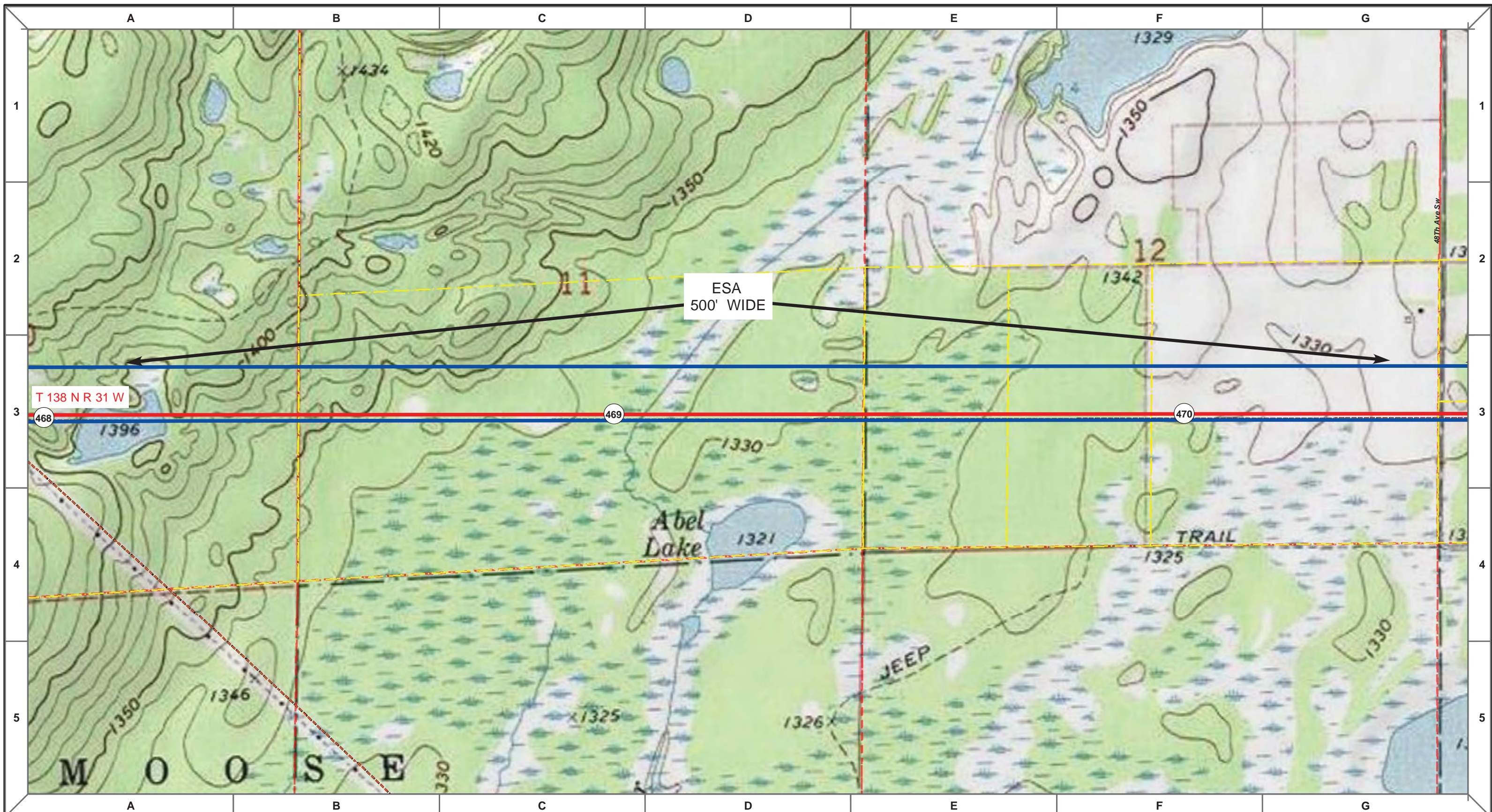
| MLB | DATE | REV NO. | DESCRIPTION |
|-----|----------|---------|---------------|
| | 10/10/13 | 0 | PUC Submittal |
| | | | |
| | | | |
| | | | |
| | | | |
| | | | |
| | | | |
| | | | |
| | | | |

ENBRIDGE PIPELINES (NORTH DAKOTA) LLC

PROPOSED SANDPIPER PIPELINE PROJECT
ROUTE MAP
Cass County, MN

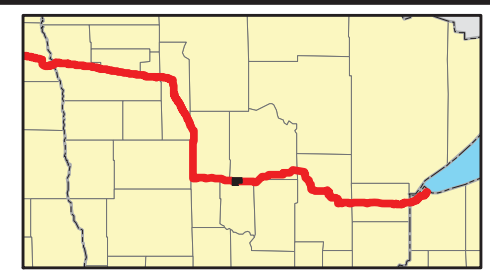
| | |
|---------------------------|------------------------|
| DRAWN: MLB | CHECKED: -- |
| DATE: Oct 18, 2013 | SCALE: AS SHOWN |

Spread: 7 Map: 71 of 128



T 138 N R 31 W

ESA
500' WIDE



- Proposed Pipeline - Sandpiper
- Existing Enbridge Pipelines
- Foreign Pipes
- - - Transmission Lines
- SPREAD BREAK
- 1 Milepost - Sandpiper
- ✕ Potential Block Valve
- Environmental Survey Area (ESA)
- Tract Boundary
- Facility Boundary
- Previously Sited Facility Boundary
- Section Lines



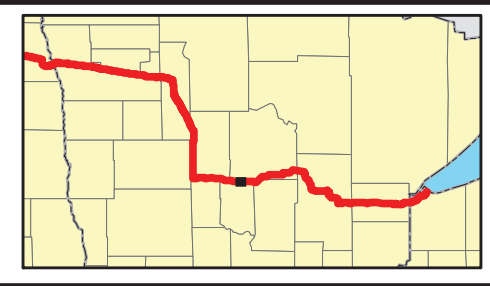
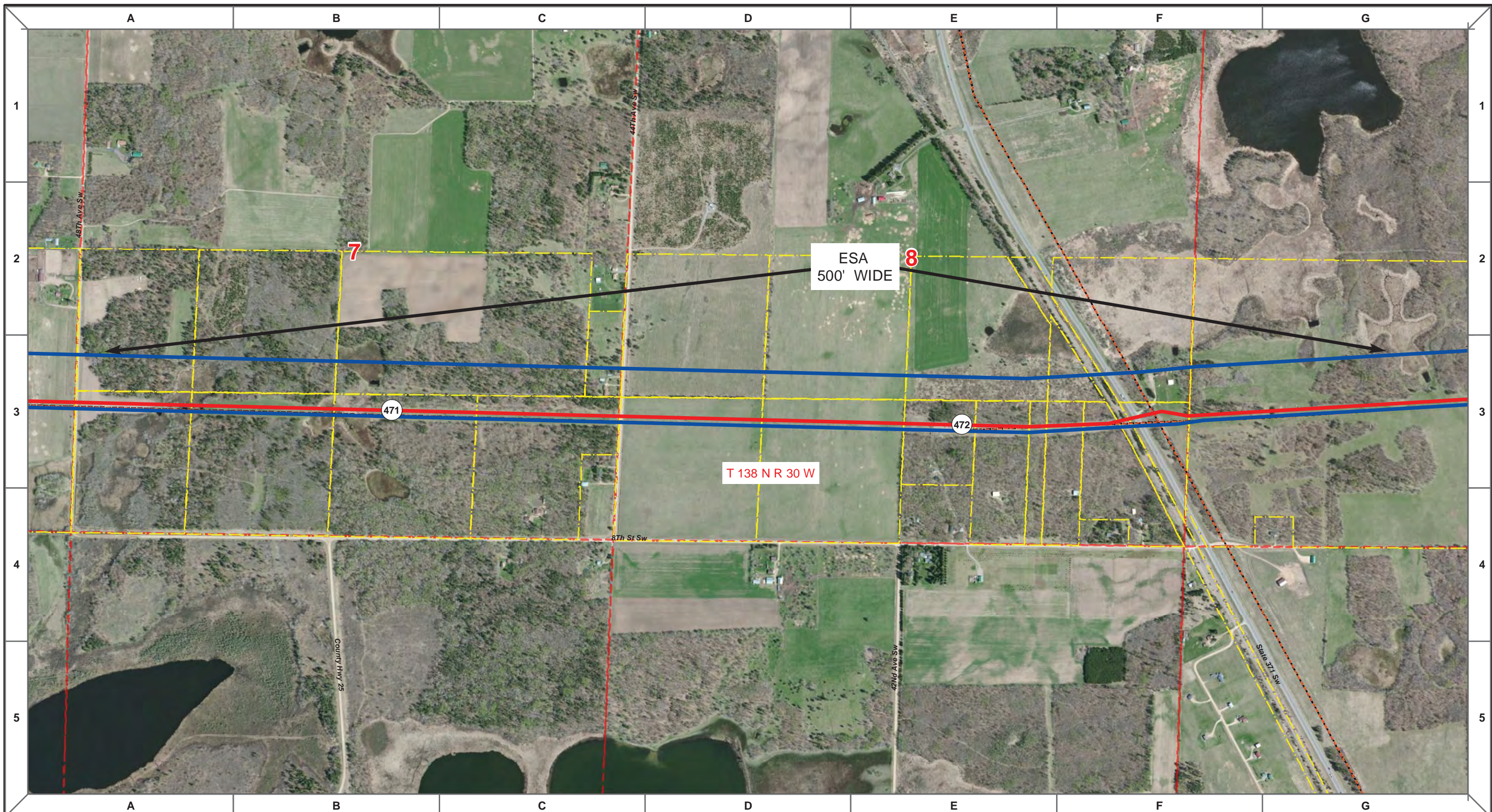
| | | | | | |
|-------|---------|----------|------|---------|-------------|
| MLB | | 10/10/13 | 0 | | |
| DRAWN | CHECKED | APPROVED | DATE | REV NO. | DESCRIPTION |

ENBRIDGE PIPELINES (NORTH DAKOTA) LLC

**PROPOSED SANDPIPER
PIPELINE PROJECT
ROUTE MAP
Cass County, MN**

| | |
|--------------------|-----------------|
| DRAWN: MLB | CHECKED: -- |
| DATE: Oct 18, 2013 | SCALE: AS SHOWN |

Spread:7
Map: 72 of 128



| | | |
|-------------------------------|---------------------------------|------------------------------------|
| Proposed Pipeline - Sandpiper | Milepost - Sandpiper | Tract Boundary |
| Existing Enbridge Pipelines | Potential Block Valve | Facility Boundary |
| Foreign Pipes | Environmental Survey Area (ESA) | Previously Sited Facility Boundary |
| Transmission Lines | | Section Lines |
| SPREAD BREAK | | |

500 250 0 500 1,000
 Feet

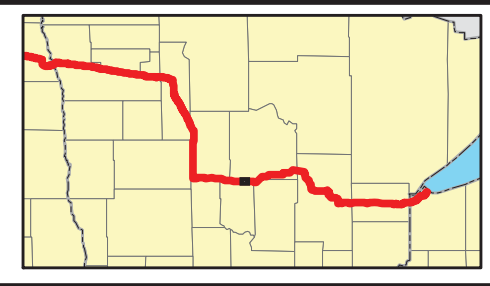
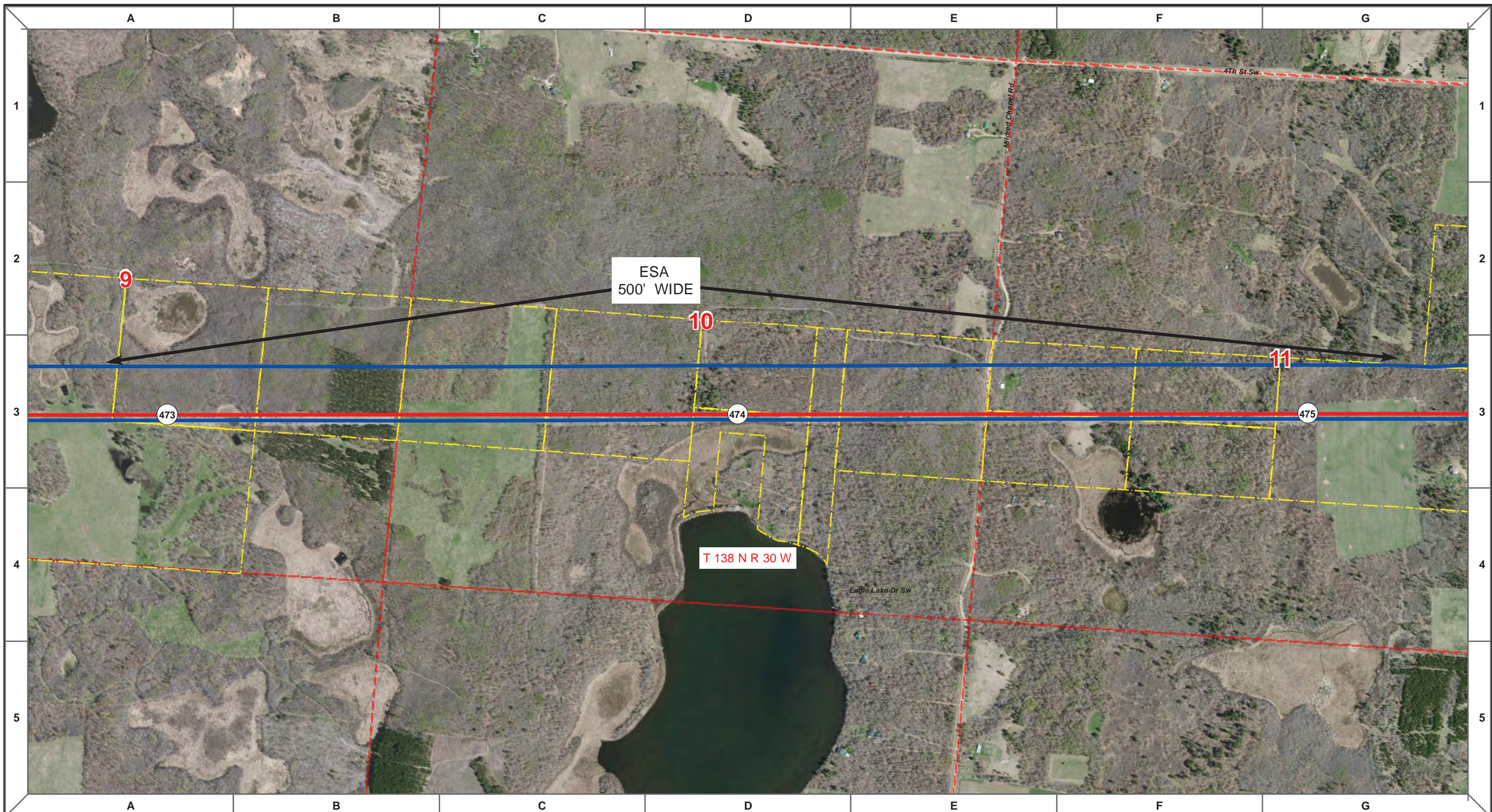
| | | | | | |
|-------|---------|----------|------|---------|-------------|
| MLB | | 10/10/13 | 0 | | |
| DRAWN | CHECKED | APPROVED | DATE | REV NO. | DESCRIPTION |
| | | | | | |
| | | | | | |
| | | | | | |
| | | | | | |
| | | | | | |
| | | | | | |

ENBRIDGE PIPELINES (NORTH DAKOTA) LLC

PROPOSED SANDPIPER PIPELINE PROJECT
ROUTE MAP
Cass County, MN

| | |
|---------------------------|------------------------|
| DRAWN: MLB | CHECKED: -- |
| DATE: Oct 18, 2013 | SCALE: AS SHOWN |

Spread:7 Map: 73 of 128



| | | |
|-------------------------------|---------------------------------|------------------------------------|
| Proposed Pipeline - Sandpiper | Milepost - Sandpiper | Tract Boundary |
| Existing Enbridge Pipelines | Potential Block Valve | Facility Boundary |
| Foreign Pipes | Environmental Survey Area (ESA) | Previously Sited Facility Boundary |
| Transmission Lines | | Section Lines |
| SPREAD BREAK | | |

500 250 0 500 1,000 Feet

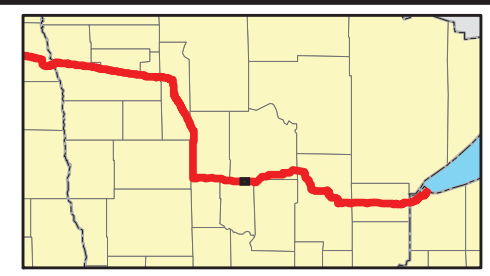
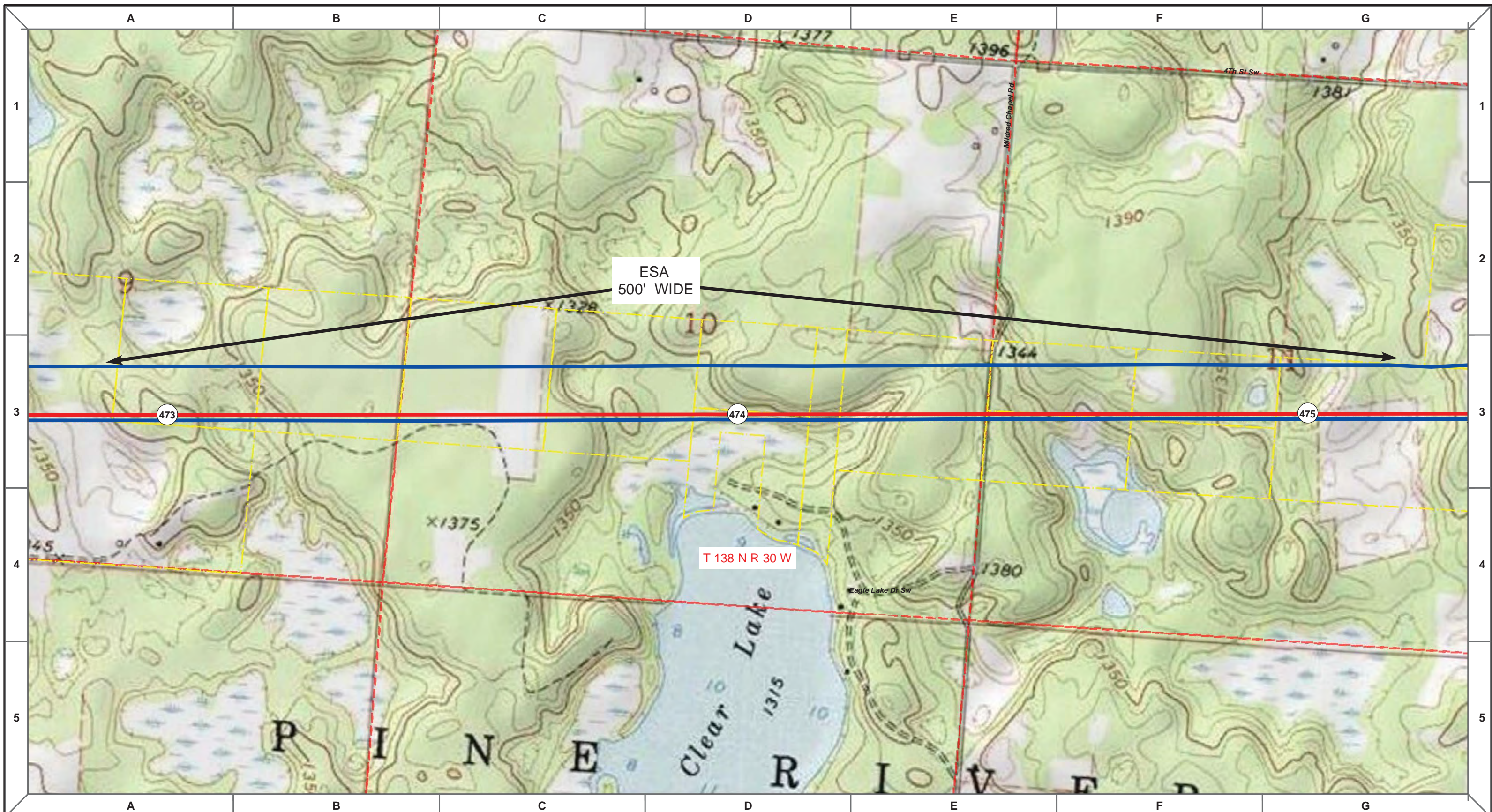
| DRAWN | CHECKED | APPROVED | DATE | REV NO. | DESCRIPTION |
|-------|---------|----------|----------|---------|---------------|
| MLB | | | 10/10/13 | 0 | PUC Submittal |
| | | | | | |
| | | | | | |
| | | | | | |
| | | | | | |

ENBRIDGE PIPELINES (NORTH DAKOTA) LLC

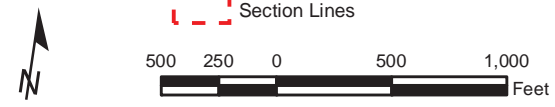
**PROPOSED SANDPIPER
PIPELINE PROJECT
ROUTE MAP
Cass County, MN**

| | |
|-----------------------------------|--------------------------------|
| <small>DRAWN:</small> MLB | <small>CHECKED:</small> -- |
| <small>DATE:</small> Oct 18, 2013 | <small>SCALE:</small> AS SHOWN |

Spread:7
Map: 74 of 128



- Proposed Pipeline - Sandpiper
- Existing Enbridge Pipelines
- Foreign Pipes
- - - Transmission Lines
- SPREAD BREAK
- 1 Milepost - Sandpiper
- ✕ Potential Block Valve
- Environmental Survey Area (ESA)
- Tract Boundary
- Facility Boundary
- Previously Sited Facility Boundary
- Section Lines



| | | | | | |
|-------|---------|----------|------|---------|---------------|
| | | | | | |
| MLB | | 10/10/13 | 0 | | PUC Submittal |
| DRAWN | CHECKED | APPROVED | DATE | REV NO. | DESCRIPTION |

ENBRIDGE PIPELINES (NORTH DAKOTA) LLC

**PROPOSED SANDPIPER
PIPELINE PROJECT
ROUTE MAP
Cass County, MN**

| | |
|---------------------------|------------------------|
| DRAWN: <i>MLB</i> | CHECKED: <i>--</i> |
| DATE: <i>Oct 18, 2013</i> | SCALE: <i>AS SHOWN</i> |

Spread:7
Map: 74 of 128