

# Dodge County Wind, LLC

## Figure 1.1 - Project Area Location

Location  
Steele, Dodge, & Mower County, Minnesota

Date: 1/3/2022

- Substation
- - - Primary Route
- - - Alternate Segment
- Wind Resource Area
- County Road
- State Highway
- Federal Highway
- Counties
- Township



SOURCE: DELORME WORLD TOPOGRAPHIC QUADRANGLES 1:24,000

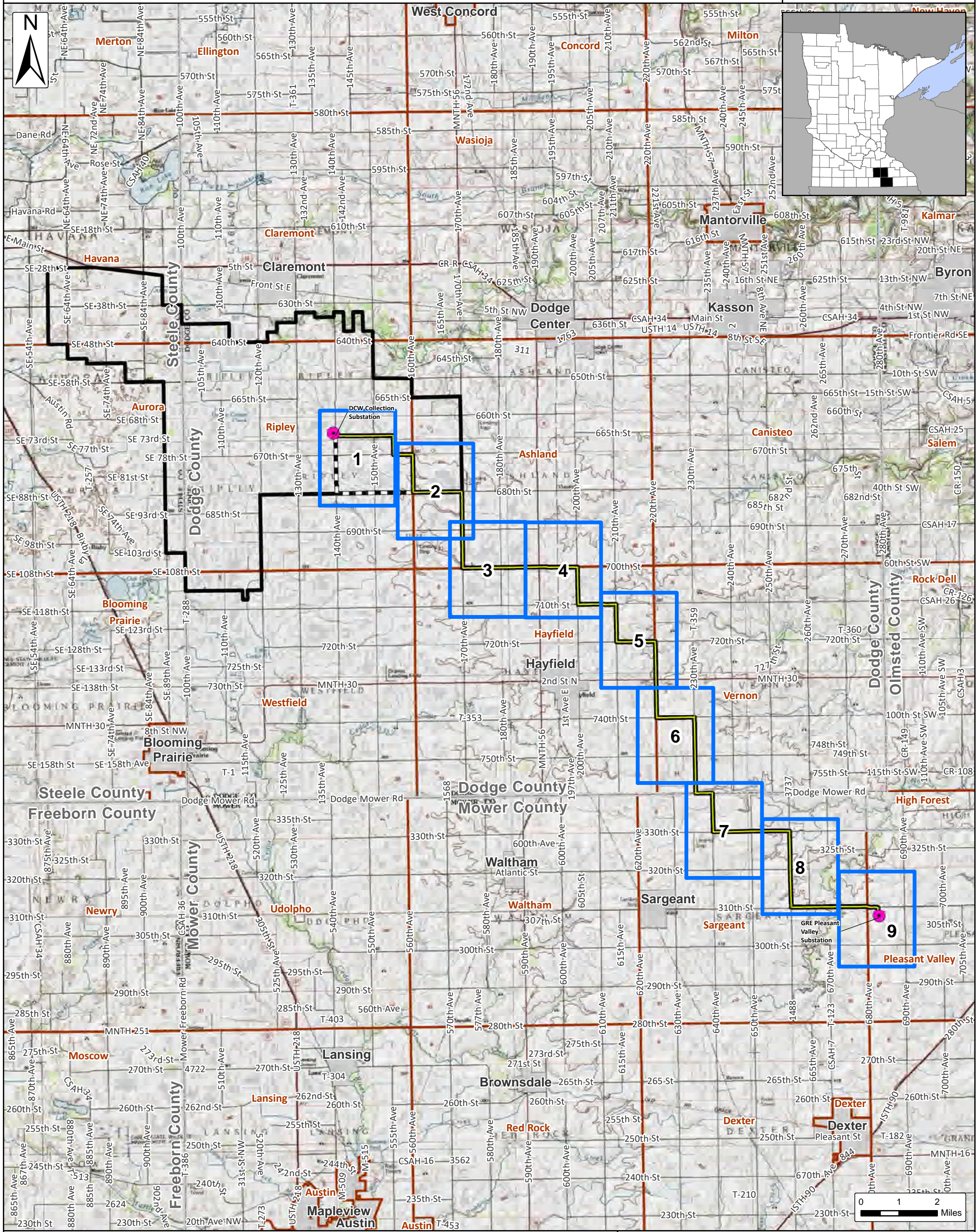





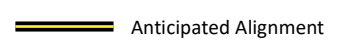


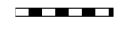

# Dodge County Wind, LLC

Issue Date:  
1/3/2022

## Figure 1.2 - Detailed Aerial Index

Steele, Dodge, & Mower Counties, Minnesota



	Mapbook Page		Substation		City/Village
	Anticipated Alignment		Townships		Counties
	Alternate Segment White		Wind Farm Boundary		

SOURCE: USGS TOPOGRAPHIC QUADRANGLES 1:24,000





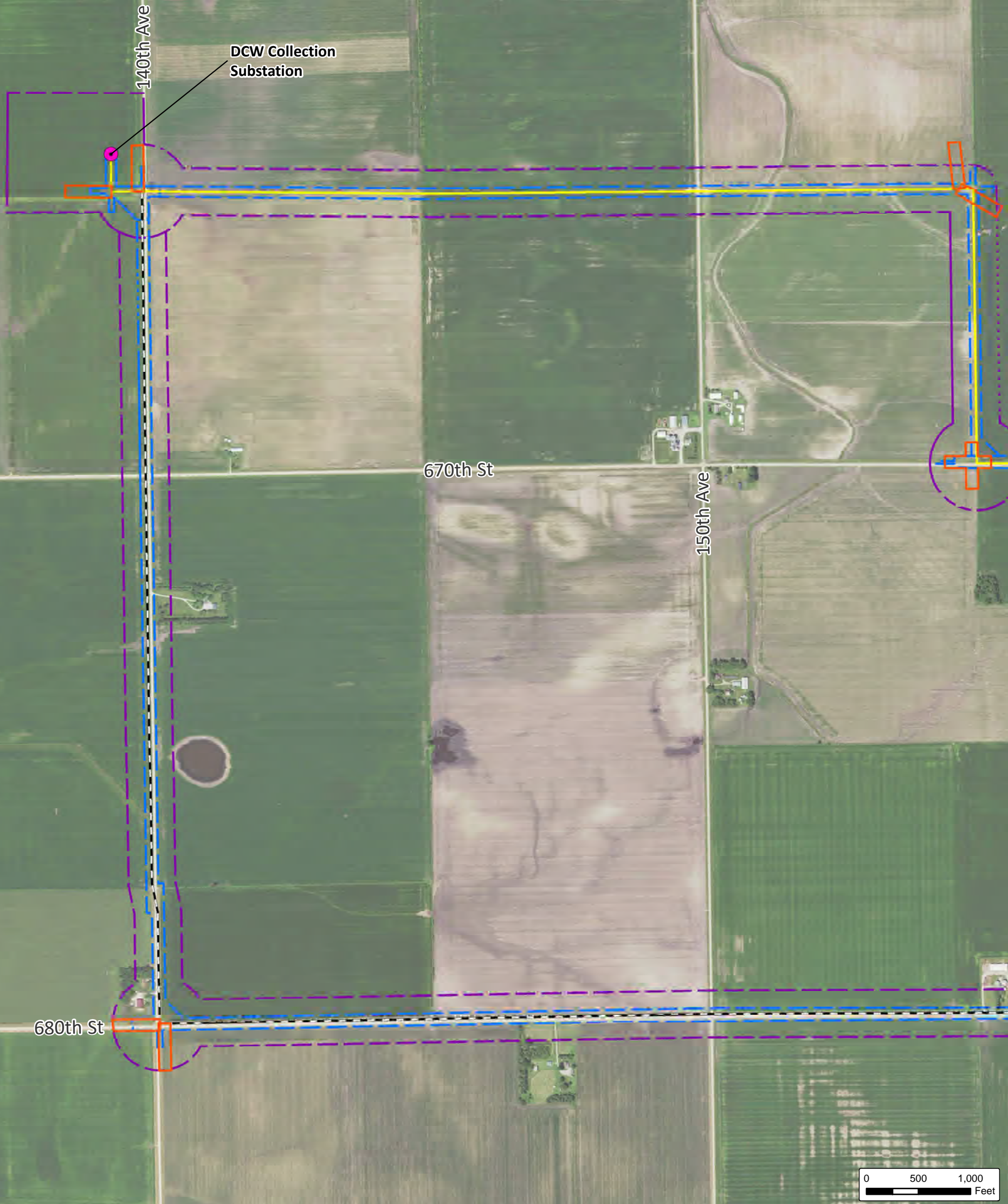
# Dodge County Wind, LLC

## Figure 1.2 - Detailed Aerial

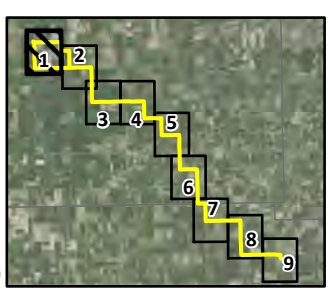
### Page 1 of 9

Dodge County and Mower County, Minnesota

Issue Date:  
1/3/2022



- Substation
- Anticipated Alignment
- Alternate Segment White
- Proposed Pulling Easements
- Proposed Laydown Yard
- Project ROW
- Route
- Existing Transmission Line
- City/Village
- Townships
- Counties



SOURCE: USDA NAIP IMAGERY 2019



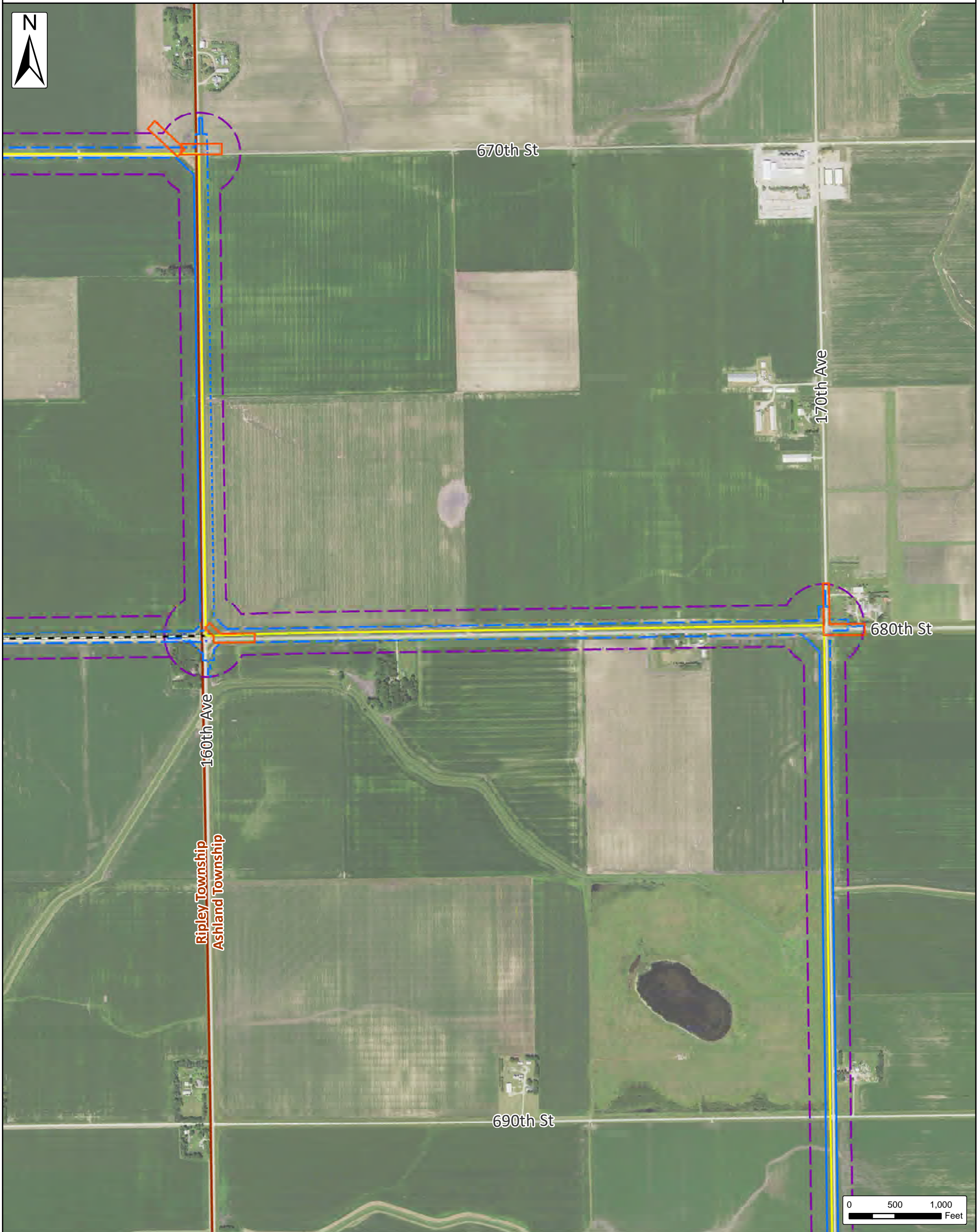
# Dodge County Wind, LLC

## Figure 1.2 - Detailed Aerial

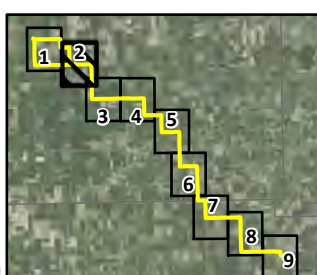
### Page 2 of 9

Dodge County and Mower County, Minnesota

Issue Date:  
1/3/2022



- Substation
- Anticipated Alignment
- Alternate Segment White
- ▭ Proposed Pulling Easements
- ▭ Proposed Laydown Yard
- ▭ Project ROW
- ▭ Route
- Existing Transmission Line
- ▭ City/Village
- ▭ Townships
- ▭ Counties



SOURCE: USDA NAIP IMAGERY 2019





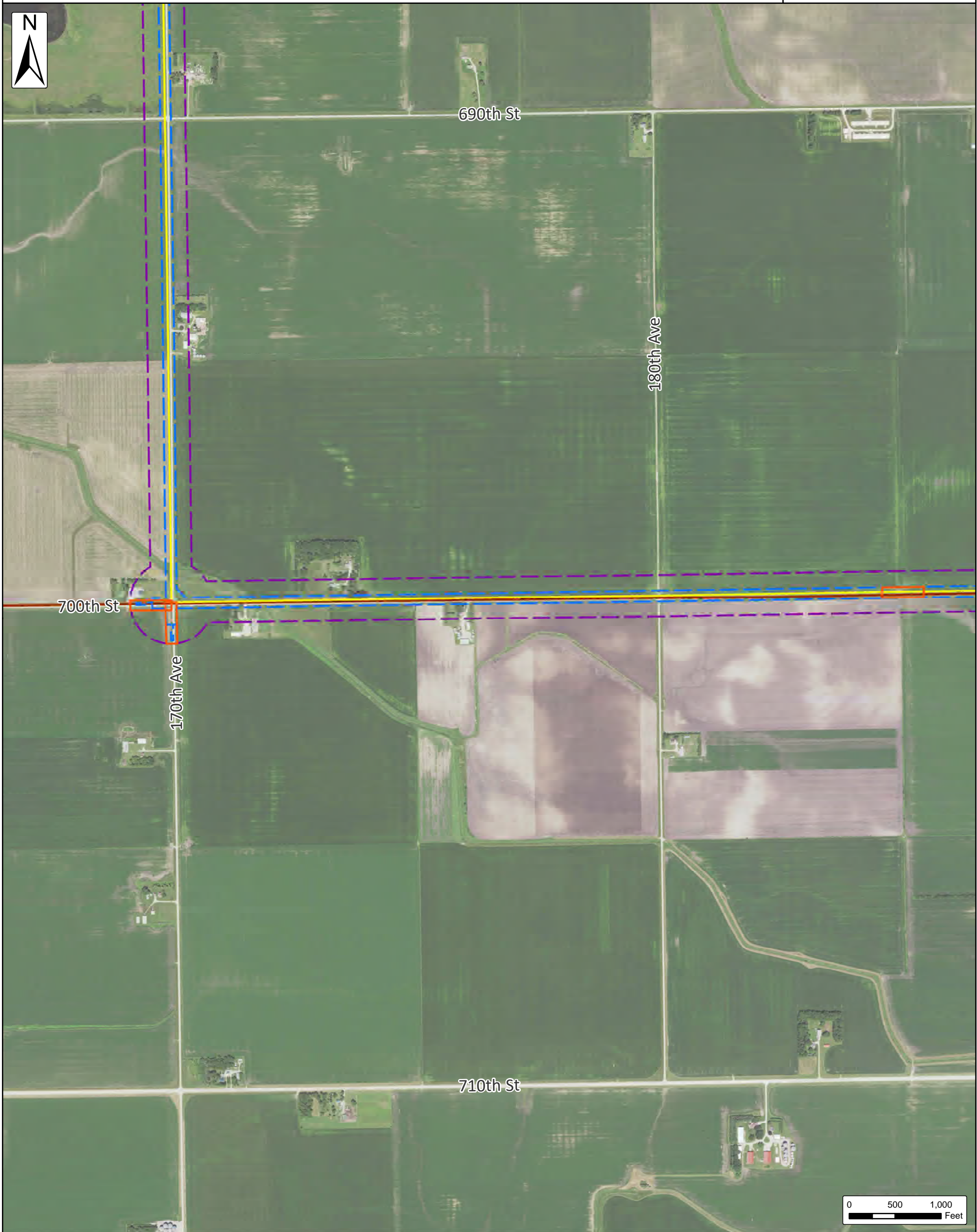
# Dodge County Wind, LLC

## Figure 1.2 - Detailed Aerial

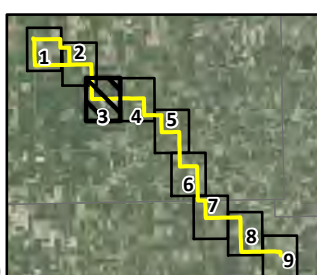
### Page 3 of 9

Dodge County and Mower County, Minnesota

Issue Date:  
1/3/2022



- Substation
- Anticipated Alignment
- Alternate Segment White
- Proposed Pulling Easements
- Proposed Laydown Yard
- Project ROW
- Route
- Existing Transmission Line
- City/Village
- Townships
- Counties



SOURCE: USDA NAIP IMAGERY 2019



# Dodge County Wind, LLC

## Figure 1.2 - Detailed Aerial

### Page 4 of 9

Dodge County and Mower County, Minnesota

Issue Date:  
1/3/2022



690th St

200th Ave

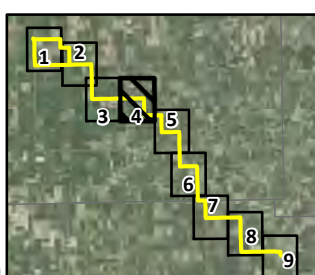
700th St Ashland Township  
Hayfield Township

MNTH 56

710th St

0 500 1,000  
Feet

- Substation
- Anticipated Alignment
- Alternate Segment White
- Proposed Pulling Easements
- Proposed Laydown Yard
- Project ROW
- Route
- Existing Transmission Line
- City/Village
- Townships
- Counties



SOURCE: USDA NAIP IMAGERY 2019



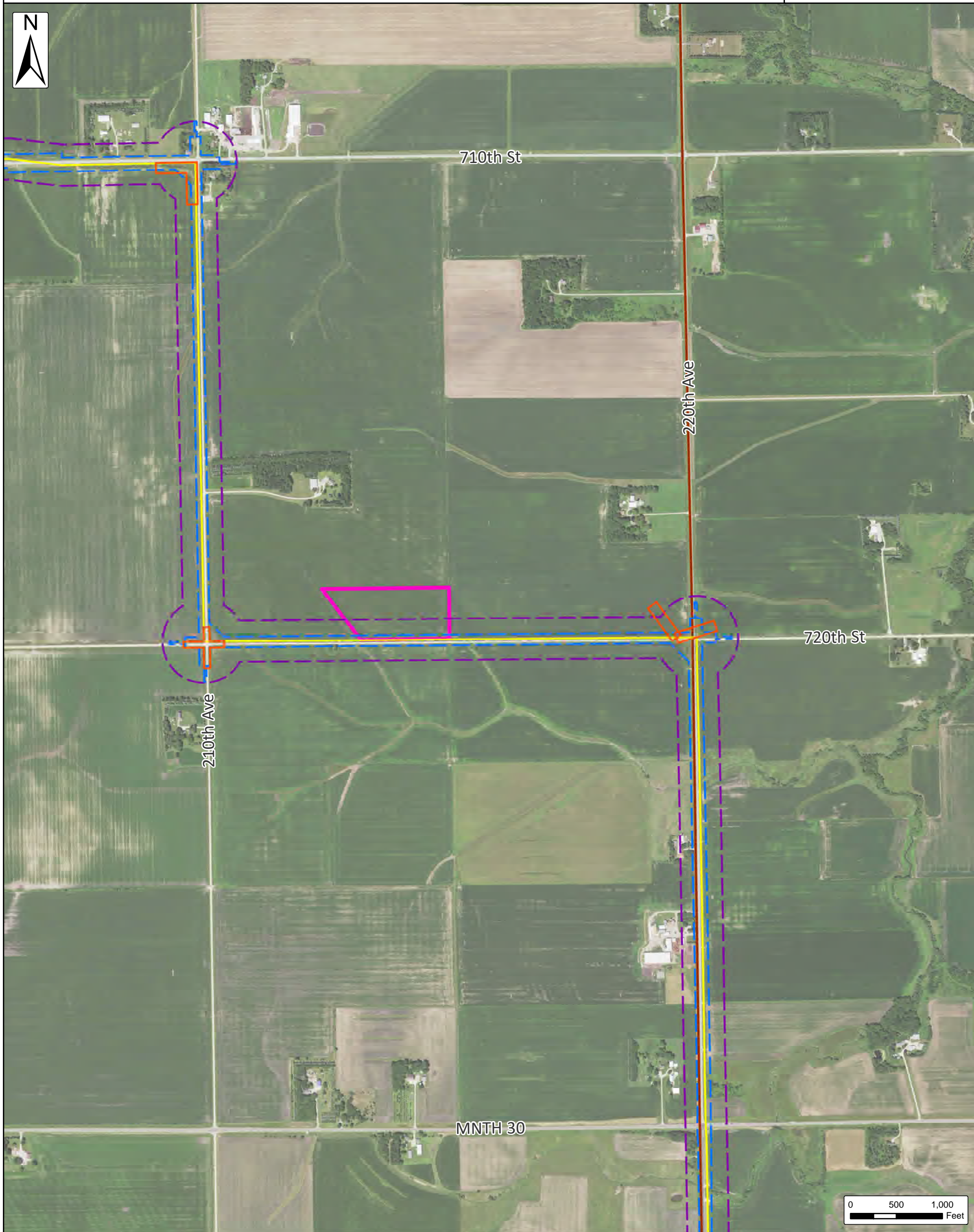
# Dodge County Wind, LLC

## Figure 1.2 - Detailed Aerial

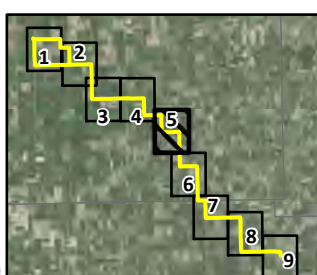
### Page 5 of 9

Dodge County and Mower County, Minnesota

Issue Date:  
1/3/2022



- Substation
- Anticipated Alignment
- Alternate Segment White
- Proposed Pulling Easements
- Proposed Laydown Yard
- Project ROW
- Route
- Existing Transmission Line
- City/Village
- Townships
- Counties



SOURCE: USDA NAIP IMAGERY 2019



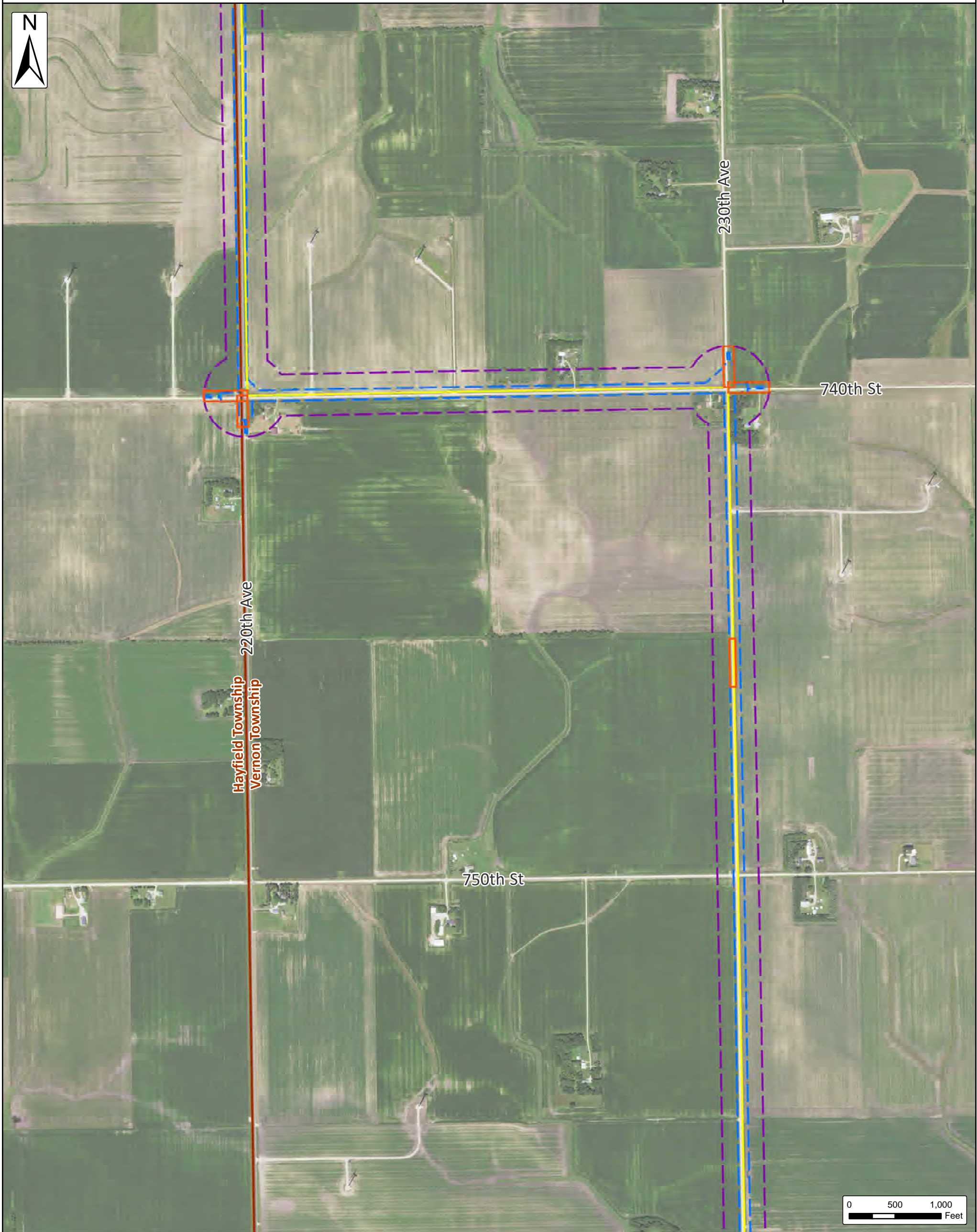
# Dodge County Wind, LLC

## Figure 1.2 - Detailed Aerial

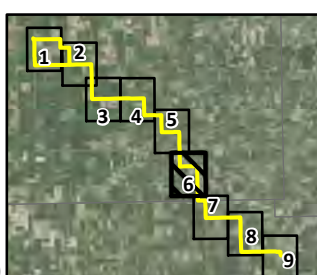
### Page 6 of 9

Dodge County and Mower County, Minnesota

Issue Date:  
1/3/2022



- Substation
- Anticipated Alignment
- Alternate Segment White
- Proposed Pulling Easements
- Proposed Laydown Yard
- Project ROW
- Route
- Existing Transmission Line
- City/Village
- Townships
- Counties



SOURCE: USDA NAIP IMAGERY 2019



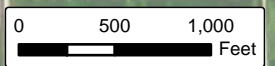
# Dodge County Wind, LLC

## Figure 1.2 - Detailed Aerial

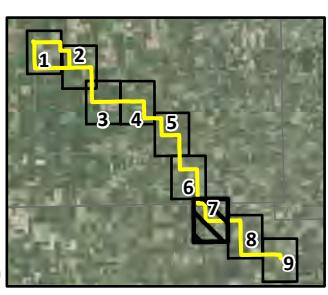
### Page 7 of 9

Dodge County and Mower County, Minnesota

Issue Date:  
1/3/2022



- Substation
- Anticipated Alignment
- Alternate Segment White
- Proposed Pulling Easements
- Proposed Laydown Yard
- Project ROW
- Route
- Existing Transmission Line
- City/Village
- Townships
- Counties



SOURCE: USDA NAIP IMAGERY 2019



# Dodge County Wind, LLC

## Figure 1.2 - Detailed Aerial

### Page 8 of 9

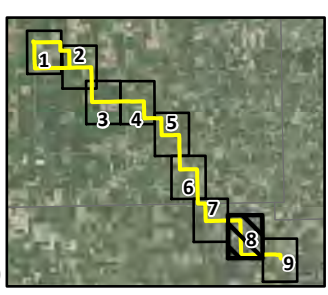
Dodge County and Mower County, Minnesota

Issue Date:  
1/3/2022



Pleasant Valley to  
Austin Northeast  
161 kV (GRE)

- Substation
- Anticipated Alignment
- Alternate Segment White
- Proposed Pulling Easements
- Proposed Laydown Yard
- Project ROW
- Route
- Existing Transmission Line
- City/Village
- Townships
- Counties





# Dodge County Wind, LLC

## Figure 1.2 - Detailed Aerial

### Page 9 of 9

Dodge County and Mower County, Minnesota

Issue Date:  
1/3/2022



Pleasant Valley to  
Austin Northeast  
161 kV (GRE)

GRE Pleasant  
Valley  
Substation

680th Ave

Sargeant Township  
Pleasant Valley Township

310th St

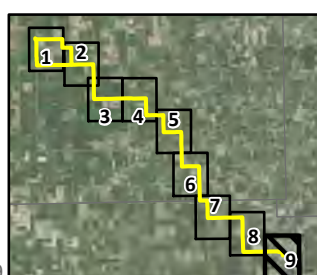
325th St

690th Ave

300th St

0 500 1,000  
Feet

- Substation
- Anticipated Alignment
- Alternate Segment White
- Proposed Pulling Easements
- Proposed Laydown Yard
- Project ROW
- Route
- Existing Transmission Line
- City/Village
- Townships
- Counties



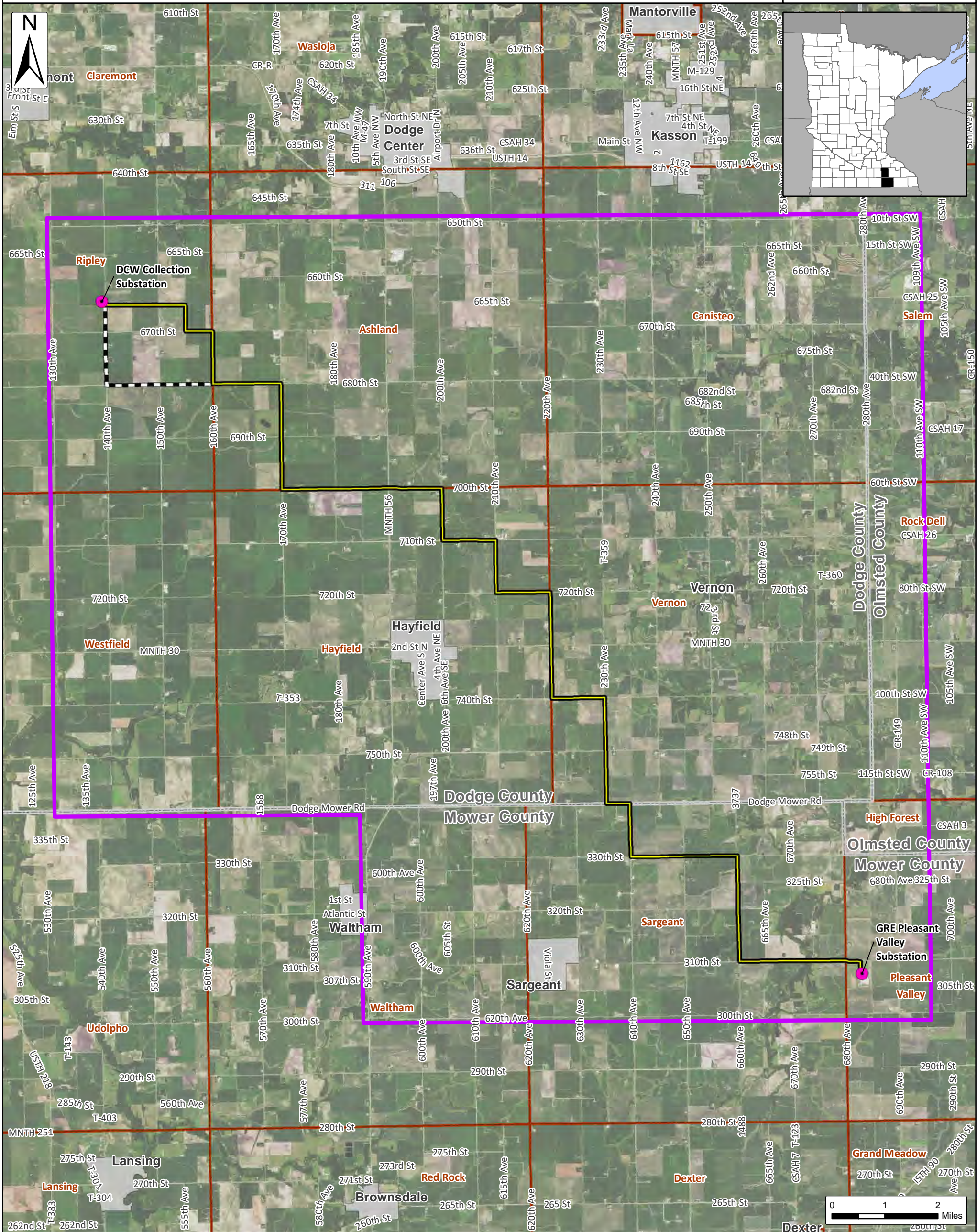


# Dodge County Wind, LLC

Issue Date:  
11/23/2021

## Figure 3.1 - Routing Study Area

Dodge County and Mower County, Minnesota



- Route Study Area
- Substation
- Proposed Alignment
- Townships
- Alternate Segment White
- Counties
- City/Village



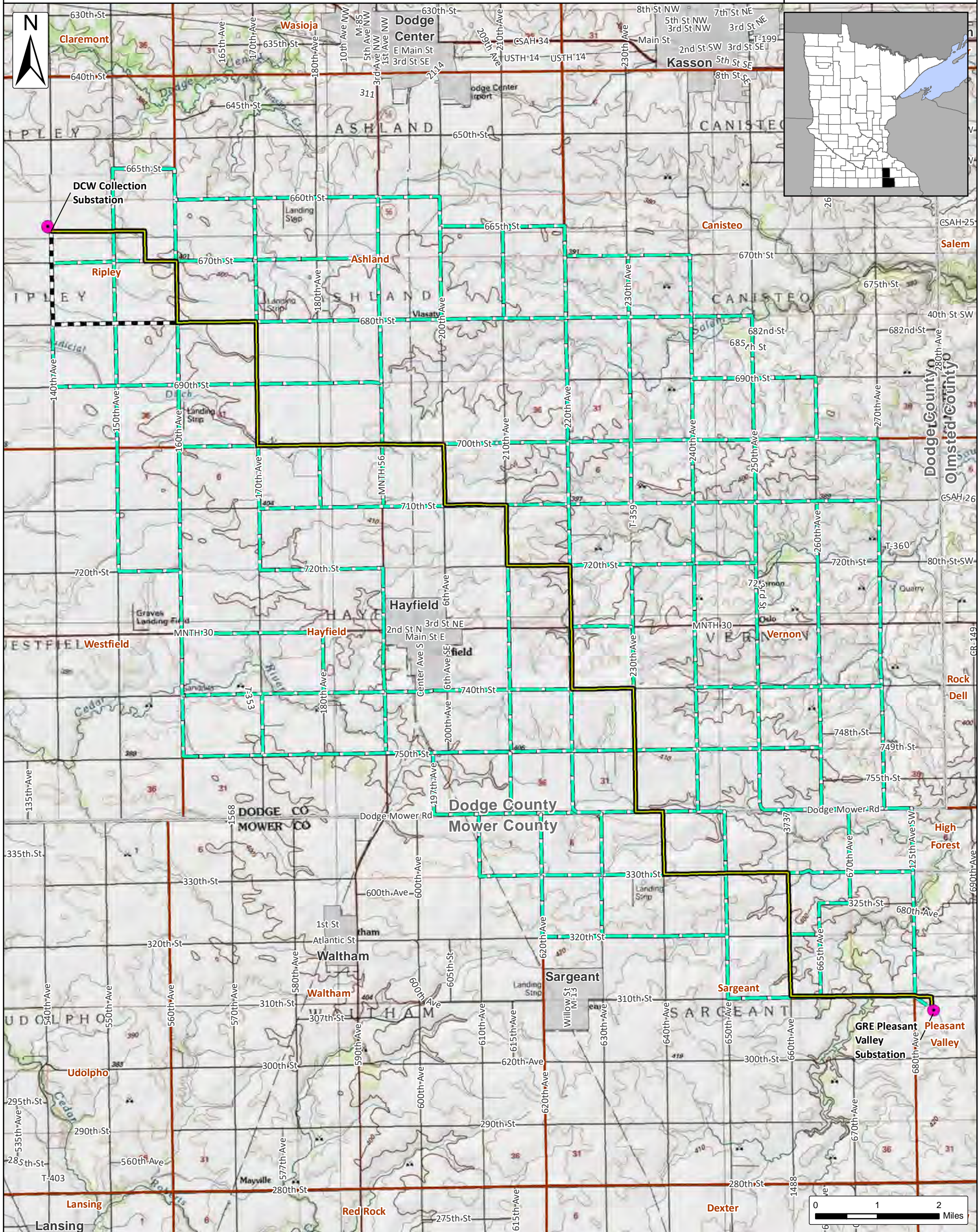


# Dodge County Wind, LLC

Issue Date:  
12/1/2021

## Figure 3.2 - Preliminary Route Network

Dodge County and Mower County, Minnesota



- Preliminary Route Network
- Substation
- City/Village
- Proposed Alignment
- Townships
- Alternate Segment White
- Counties



SOURCE: USGS TOPOGRAPHIC  
QUADRANGLES 1:24,000

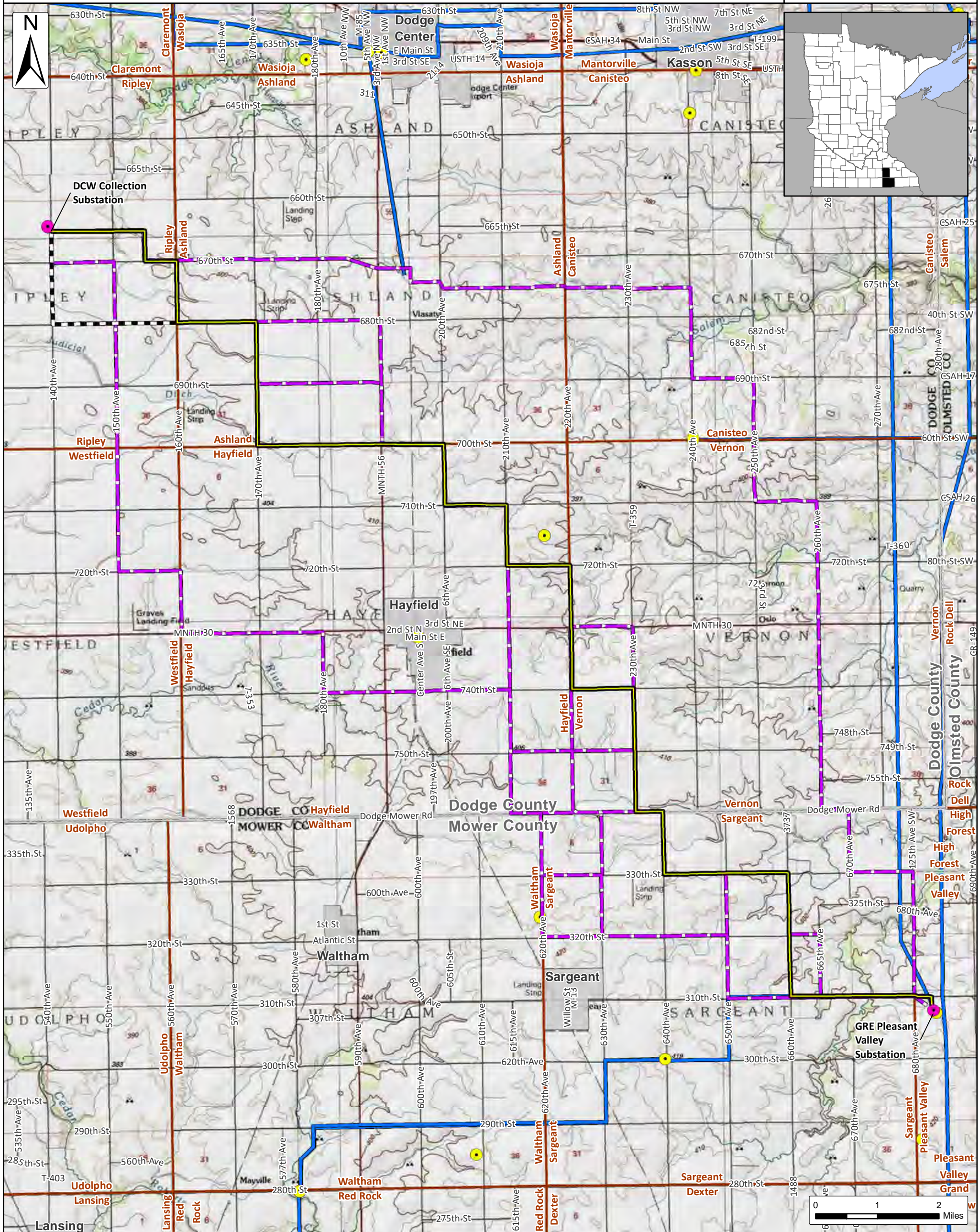


# Dodge County Wind, LLC

Issue Date:  
12/1/2021

## Figure 3.3 - Secondary Route Network

Dodge County and Mower County, Minnesota



- Secondary Route Network
- Existing Substation
- Existing Transmission Line
- Substation
- Proposed Alignment
- Alternate Segment White
- City/Village
- Townships
- Counties



SOURCE: USGS TOPOGRAPHIC QUADRANGLES 1:24,000

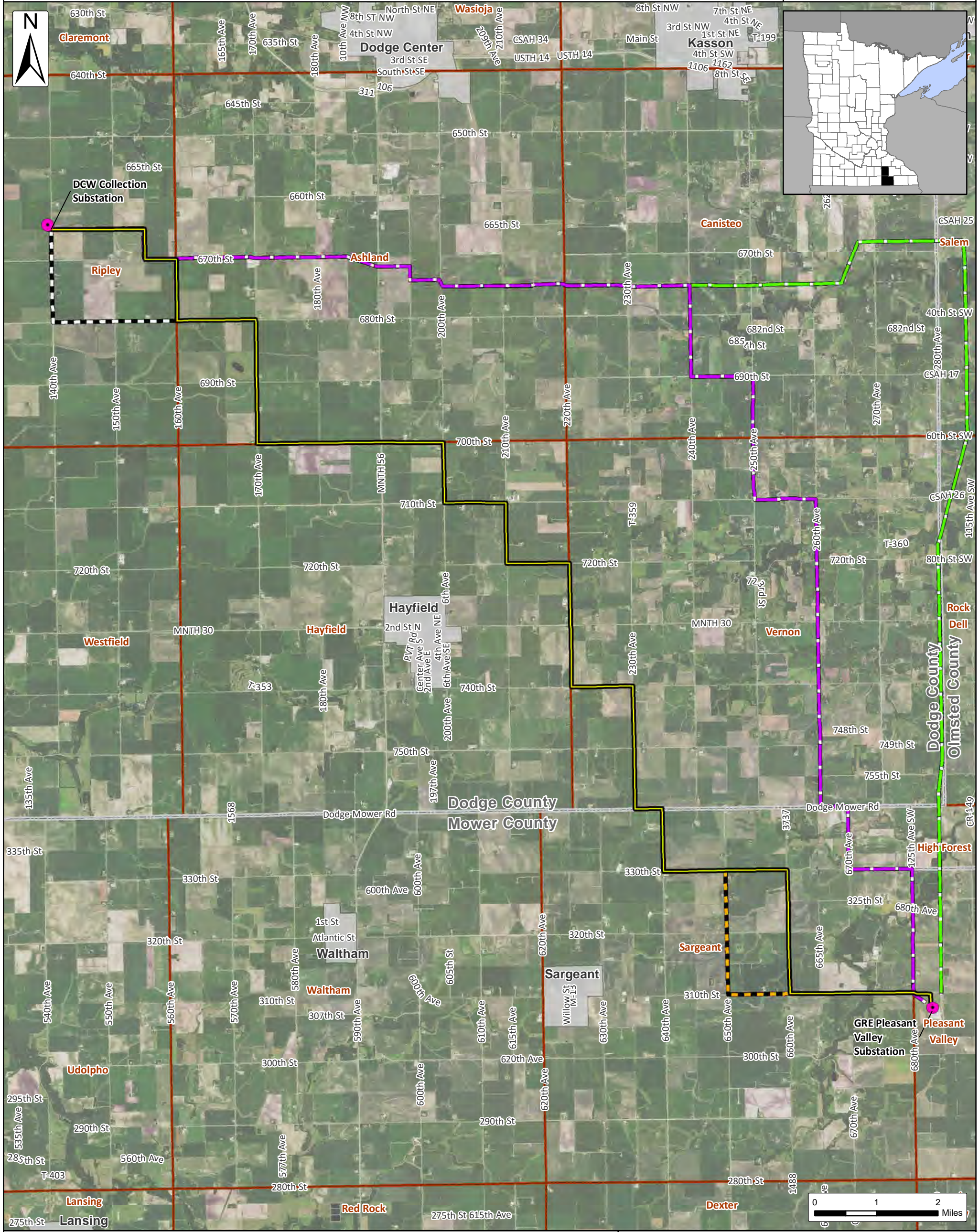


# Dodge County Wind, LLC

## Figure 3.4 - Alternative Routes Considered and Dismissed

Dodge County and Mower County, Minnesota

Issue Date:  
11/23/2021



- |  |  |                         |                         |
|--|--|-------------------------|-------------------------|
| <b>Qualitative Alternative Routes Considered but Dismissed</b> |  | <b>Proposed Project</b> |                         |
|  | Byron to Pleasant Valley Co-Location Route |                         | Substation              |
|  | Hybrid Route                               |                         | Proposed Alignment      |
| <b>Route Segments Considered but Dismissed</b>                 |  |                         | Alternate Segment White |
|  | Alternate Segment Orange                   |                         | City/Village            |
|  |  |                         | Townships               |
|  |  |                         | Counties                |



SOURCE: USDA NAIP IMAGERY 2019