



12300 Elm Creek Boulevard
Maple Grove, Minnesota 55369-4718
763-445-5000
greatriverenergy.com

June 6, 2023

To: Persons Interested in the Proposed Construction of a 115-kV High Voltage Transmission Line in Scott and Rice Counties to Replace the Existing Transmission Line Currently Located as a Second Circuit on the Capx2020 Brookings to Hampton Transmission Line Structures In Scott County, Minnesota; the Minnesota Public Utilities Commission Energy Facilities General List; Local Officials; Tribes; and Property Owners

Re: Notice of Filing of Route Permit Application with the Minnesota Public Utilities Commission (PUC Docket No. ET2/TL-23-170

Great River Energy ("Applicant") is proposing to construct a 115-kilovolt ("kV") high voltage transmission line in Scott and Rice Counties ("Project"). The Project will replace the existing 115-kV high voltage transmission line currently located as a second circuit on the CapX2020 Brookings to Hampton transmission line structures in Scott County, Minnesota. Applicant submitted an application to the Minnesota Public Utilities Commission ("Commission") for a route permit for the Project (Docket No. ET2/TL 23-170) pursuant to the alternative permitting process contained in Minnesota Rules parts 7850.2800 to 7850.3900, and Minnesota Statutes, section 216E.04.

Project Description

As shown on the enclosed fact sheet and map, the Project will include Great River Energy constructing and rebuilding approximately 6.3 miles of 115-kV high voltage transmission line. The Project will begin at the existing Cedar Lake Substation and connect to Great River Energy's existing 115-kV transmission line near the intersection of 280th St E / State Highway 19 and Panama Avenue / County Road 23. The Project is a reroute of approximately 4.5 miles of the existing 115-kV transmission line. The Project occurs in Helena and Cedar Lake Townships, east of the City of New Prague, in Scott County, and in Wheatland Township, in Rice County, Minnesota

Route Permit Process

A Route Permit from the Commission is required before the Project can be constructed. The Power Plant Siting Act (Minnesota Statutes Chapter 216E) and Minnesota Rules parts 7850.1000 to 7850.5600 establish the requirements for submitting and processing a Route Permit application. The statutes and rules also establish notice requirements for various stages of the process. The Route Permit application will be considered by the Commission under the alternative permitting process in Minnesota Statutes section 216E.04 and Minnesota Rules parts 7850.2800 to 7850.3900. The Commission has up to six months from the time the application is accepted as complete to process and make a decision on the Route Permit according to Minnesota Statutes section 216E.04, subd. 7, and Minnesota Rule 7850.3900, subp. 1. The Commission may extend this time limit for up to three months for just cause or upon agreement of the applicant.

Within 60 days after the Commission accepts the application as complete, the Commission and the Department of Commerce, Energy Environmental Review and Analysis ("EERA") unit will hold a public

information and scoping meeting to provide information and seek comments from the public. At this meeting, members of the public may propose additional route alternatives for consideration in the environmental assessment that the EERA will prepare. Once the public meeting is scheduled, notice of the meeting will be provided to persons whose names are on the Project contact list and will be published in a legal newspaper of general circulation in the Project area. After the environmental assessment has been completed, a public hearing will be held on the application. Any person may speak at the public hearing, present documentary evidence, ask questions of Applicants' representatives and EERA staff and submit comments.

If the Commission issues a Route Permit for the Project, Applicant may, if necessary, exercise the power of eminent domain to acquire land necessary for the Project (Minn. Stat. § 216E.12; Minn. Stat. Ch. 117).

Certificate of Need

Minnesota Statutes section 216B.243, subdivision 2 states that "[n]o large energy facility shall be sited or constructed in Minnesota without the issuance of a certificate of need by the [Public Utilities Commission]". A large energy facility is defined as "any high-voltage transmission line with a capacity of 100 kilovolts or more with more than ten miles of its length in Minnesota or that crosses a state line." The proposed Project is less than 10 miles in length and does not cross a state line; therefore, a certificate of need is not required.

How to Learn More

For more information about the regulatory process or to have your name included on the Project mailing lists, contact:

Minnesota Department of Commerce

Bill Storm, Environmental Review Manager
85 7th Place East, Suite 280
St. Paul, MN 55101-2198
bill.storm@state.mn.us
651-539-1775
mn.gov/commerce/energyfacilities

Minnesota Public Utilities Commission

Michael Kaluzniak, Energy Facilities Planner
121 7th Place East, Suite 350
St. Paul, MN 55101-2147
mike.kaluzniak@state.mn.us
651-201-2257
mn.gov/puc

There are two other options for citizens, landowners, and interested persons to receive Project information:

- 1. Sign up for the Project Mailing List.** To sign up to receive notices about Project milestones and opportunities to participate (meetings, comment periods, etc.) email docketing.puc@state.mn.us or call 651-201-2234 with the docket number (23-170), your name, mailing address and email address. You may request to receive notices by email or U.S. Mail.
- 2. Subscribe to the Docket.** To receive email notifications when new documents are filed in the Route Permit docket visit: <https://www.edockets.state.mn.us/EFiling>, select Subscribe to eDockets and follow the prompts.

Note – subscribing may result in a large number of emails.

Current information about the Project and Route Permit Application is available online at:
https://greatriverenergy.com/transmission_project/cedar-lake-transmission-project/.

A paper copy of the Route Permit Application will be available for review at:

New Prague City Hall
118 Central Ave. N.
New Prague, MN 56071
952-758-1138

Additional information may be obtained by calling Mark Strohfus at Great River Energy: 1-888-521-0130 ext. 5210, direct 763-445-5210 or by email at mstrohfus@greenergy.com.

Sincerely,

GREAT RIVER ENERGY

A handwritten signature in black ink, appearing to read "Mark Strohfus", written in a cursive style.

Mark Strohfus
Project Manager, Transmission Permitting

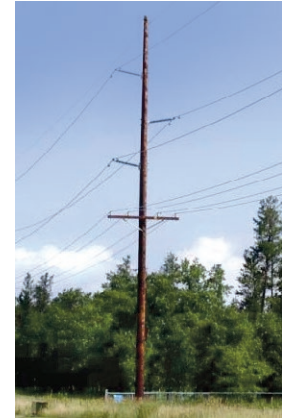
Cedar Lake reroute transmission project

Great River Energy is proposing to construct a new 115-kilovolt (kV) transmission line in Scott and Rice Counties ("Cedar Lake Reroute" or "Project"). The Project is being done to make room for a second 345-kV circuit to be attached to the existing CapX2020 Brookings to Hampton transmission structures, which run along County Road 2 in the Project area. The Project, along with the second 345-kV circuit, will ensure we maintain reliable and resilient service to electric customers in the future by addressing reliability concerns and increasing deliverability of renewable resources from southern Minnesota to the southwest metropolitan area. A route permit must be issued by the Minnesota Public Utilities Commission (PUC) before construction can begin.

Overview

The Project will include construction of a new approximately 6.3-mile 115-kV transmission line. The transmission line will connect at Great River Energy's existing MV-EVX 115-kV transmission line near the intersection of County Road 23 and Minnesota Highway 19 and extend to the existing Cedar Lake Substation south of County Road 2 (see map on back). The Project will be built to Great River Energy's 115-kV design but will initially operate at 69 kV. Designing to 115-kV standards will simplify operating the regional transmission system at 115 kV as electrification and load development increases in the area. The route permit application will include analyses with the transmission line operating at 115 kV. Once the transmission line is constructed and connected to the substation, Great River Energy's existing 4.5-mile MV-CDT 115-kV transmission circuit, which is co-located in part on the CapX2020 345-kV transmission structures along County Road 2, will be removed.

After Great River Energy submits the route permit application to the Minnesota PUC, a representative from Great River Energy will contact property owners to discuss access to the proposed route and the process for acquisition of easements. Following construction of the transmission line, Great River Energy will promptly repair any damages that may occur.



Typical 115-kV wood single circuit structure with and without distribution under build.

Permitting and public involvement

Great River Energy will submit a route permit application for the proposed project to the PUC. During the route permit process, the public and regulatory agencies will have numerous opportunities to provide input on the Project, including public meetings facilitated by the PUC and Department of Commerce Energy Environmental Review and Analysis (DOC EERA). The DOC EERA will prepare an environmental assessment for the Project. Construction cannot begin until an approved route permit is issued by the PUC.

About Great River Energy and Minnesota Valley Electric Cooperative

Great River Energy is a not-for-profit wholesale electric power cooperative which provides electricity to approximately 1.7 million people through its 27 member-owner cooperatives and customers. Through our member-owners, we serve two-thirds of Minnesota geographically and parts of Wisconsin, including Minnesota Valley Electric Cooperative.

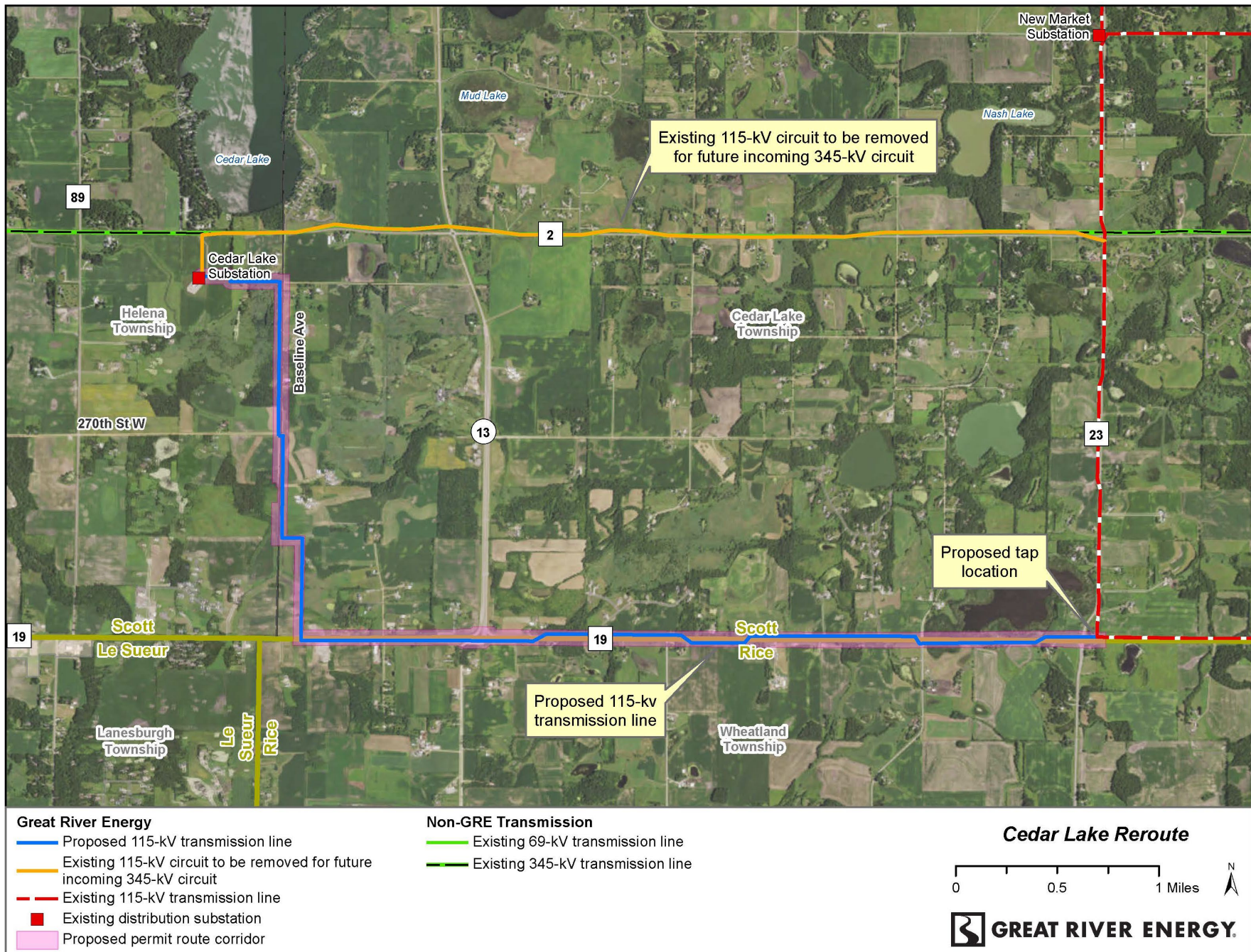
Schedule

Notifications	Winter/Spring 2023
State permitting	Spring 2023 – Spring 2024
Survey/design	Fall 2023 – Spring 2024
Easements/ Environmental permits	Winter 2024 – Spring 2025
Transmission line construction	Fall 2024 – Summer 2025
Energization	Summer 2025

Quick facts

Length	– 6.3 miles
Voltage	– 115 kV (initially operated at 69 kV)
Structures	– 60 to 90-foot wood or steel poles
Spans	– 300 to 400 feet apart
Right of way	– 100-foot-wide right of way, 50 feet on each side of the centerline
Permits	– MN Public Utilities Commission route permit

Proposed project



Great River Energy representatives

For project updates and information, visit www.greatriverenergy.com/CedarLakeTap or contact any of the following:

Matthew Hagelin, SR/WA
Sr. Field Representative, Land Rights
(763) 445-5981 | mhagelin@greenergy.com

Mark Strohfus
Project Manager, Transmission Permitting
763-445-5210 | mstrohfus@greenergy.com

6/6/2023