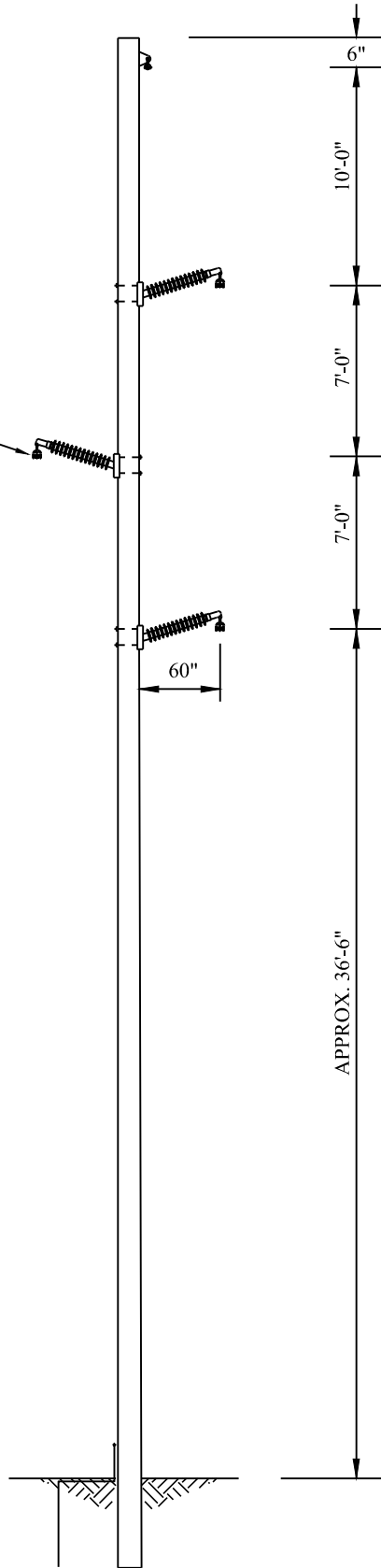


115 KV
TRANSMISSION
CONDUCTORS



TYPICAL TANGENT STRUCTURE

REV	DATE	DESCRIPTION



Project Manager: DJH
 Designer: JDL
 Project Number: 419115
 Phone: (712) 472-2531

DETROIT LAKES PUBLIC
 UTILITIES
 DETROIT LAKES, MN

115 kV TRANSMISSION LINE
 SOUTH SUBSTATION

APPENDIX A
 FIGURE 3



REV	DATE	DESCRIPTION
0	3-16-18	PRELIMINARY



Project Manager: PAD
 Designer: BRM
 Project Number: 419115
 Phone: (712) 472-2531

DETROIT LAKES PUBLIC UTILITIES
 DETROIT LAKES, MINNESOTA

FUTURE SOUTH SUBSTATION LAYOUT

APPENDIX A
 FIGURE 4

R 41W

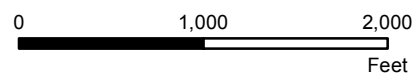


T 138N

P:\0419115\GIS\Appendix A fig 5.mxd

Image Source: 2017 Farm Service Agency

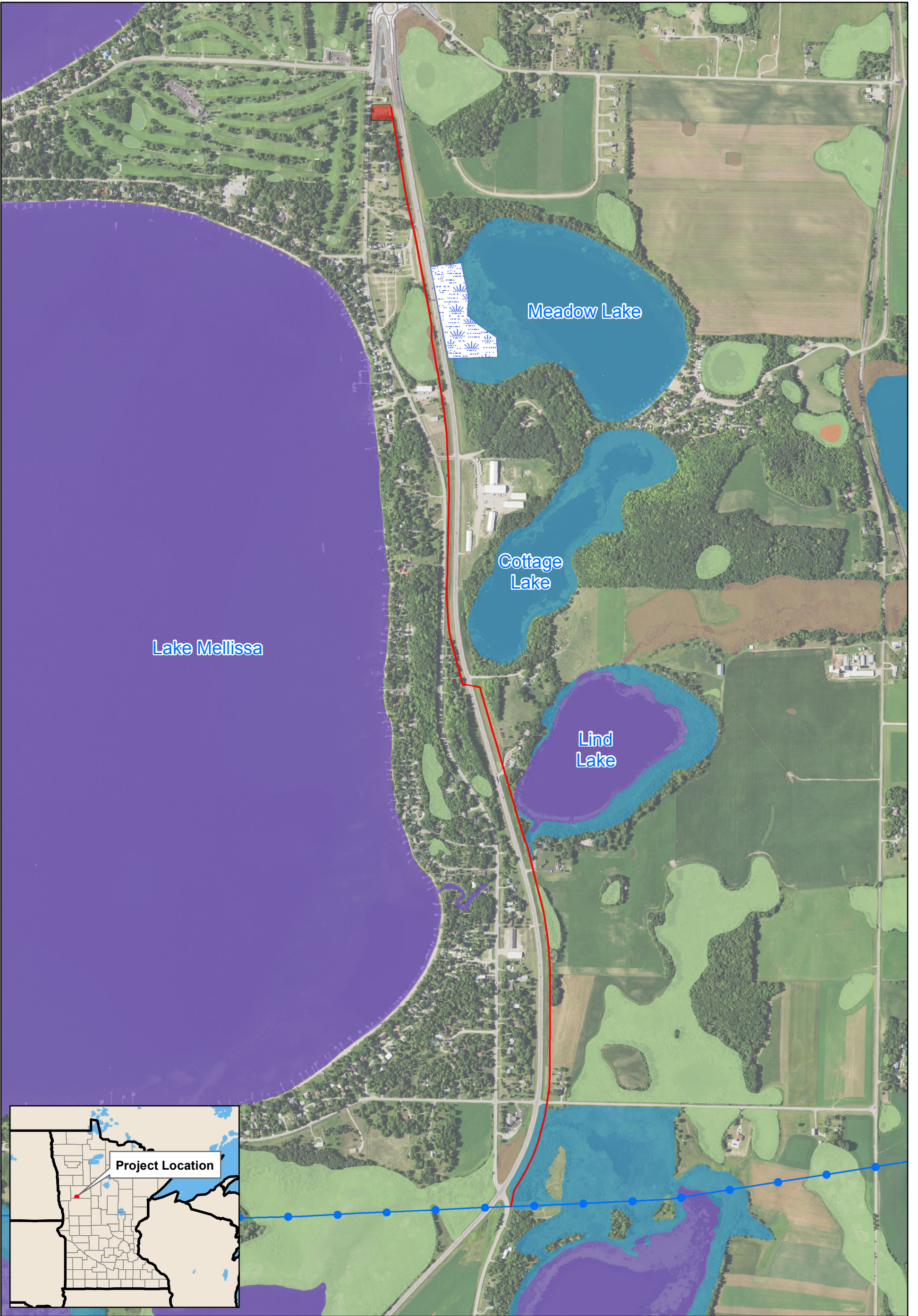
- Proposed 115kV Transmission Line Alignment
- Proposed 115kV Substation Site
- Existing GRE 115kV Transmission Line
- Existing Detroit Lakes 12.47 kV Distribution
- Existing Detroit Lakes 7.2 kV Distribution
- - - Underground
- Overhead



Appendix A Figure 5
 EXISTING ELECTRIC INFRASTRUCTURE MAP
 Proposed 115 kV Transmission Line
 Detroit Lakes Public Utilities
 Becker County, MN

R 41W

T 138N



P:\0419115\GIS\Wetland Inventory.mxd

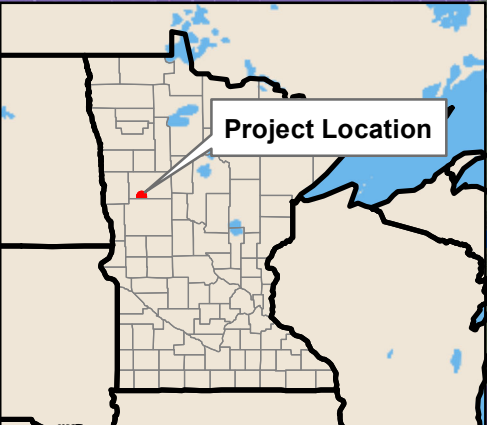
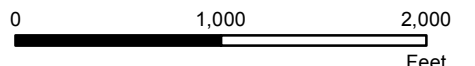


Image Source: 2017 Farm Service Agency

	Anticipated 115kV Transmission Line Alignment	NWI Simplified HGM Class
	Proposed 115kV Substation Site	Depression
	Existing 115kV Transmission Line	Lentic
	Sections	Lotic
	Meadow Lake Aquatic Management Area	Mineral Flat
		Peatland



Appendix A Figure 6
 Wetland Inventory
 Proposed 115 kV Transmission Line
 Detroit Lakes Public Utilities
 Becker County, MN

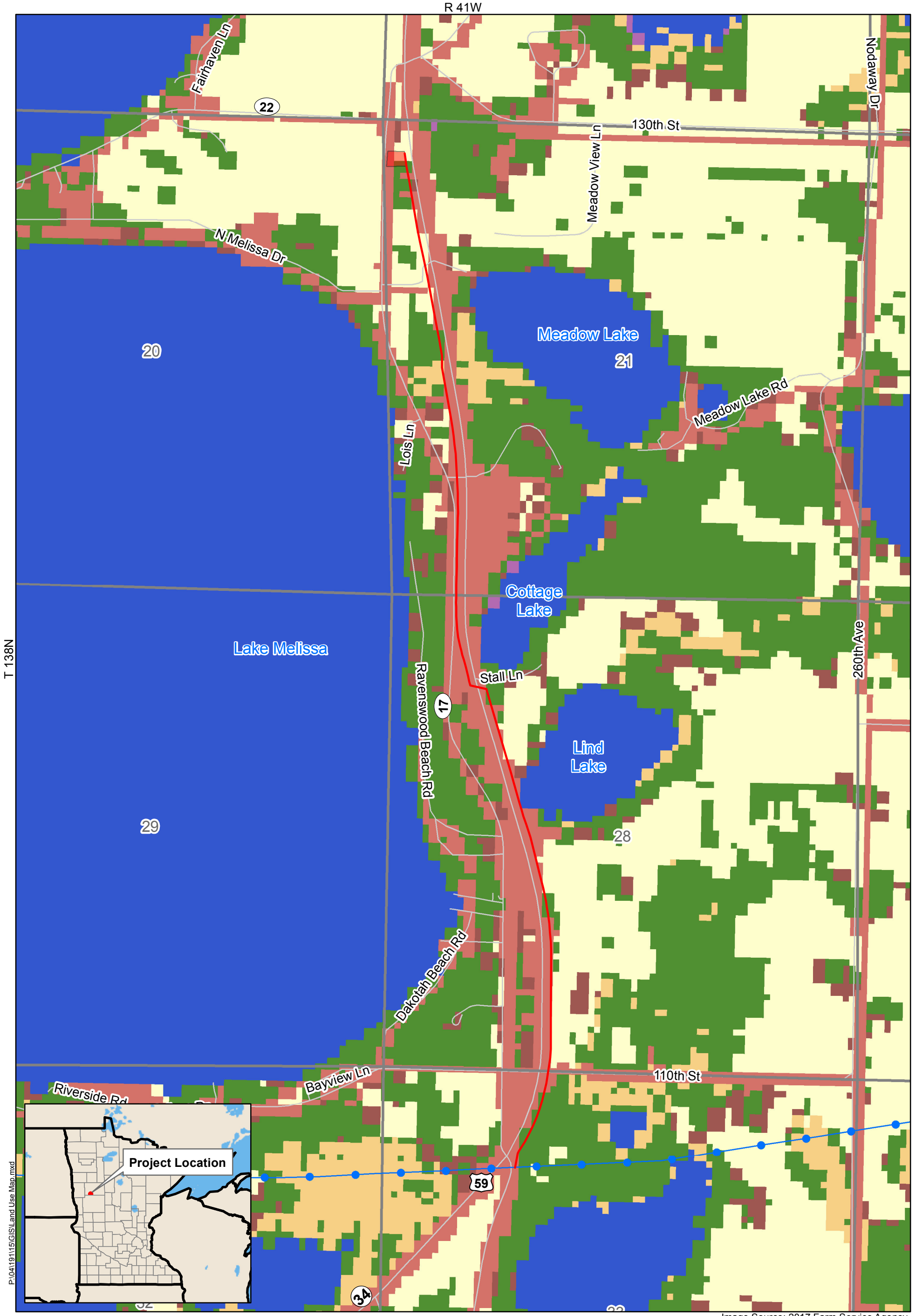
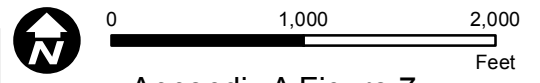
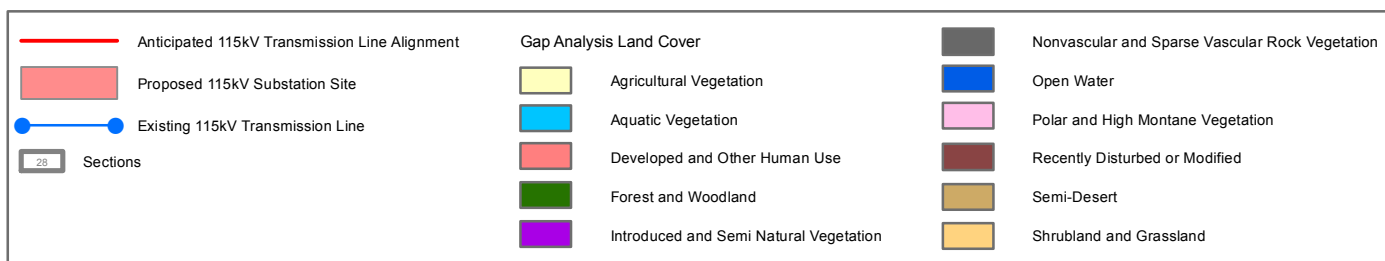


Image Source: 2017 Farm Service Agency



Appendix A Figure 7
 Existing Land Use
 Proposed 115 kV Transmission Line
 Detroit Lakes Public Utilities
 Becker County, MN

T 138N

P:\0419115\GIS\Land Use Map.mxd



Image Source: 2017 Farm Service Agency

	Anticipated 115kV Transmission Line Alignment	Zoning	
	Proposed 115kV Substation Site		NOT ZONED
	Existing 115kV Transmission Line		AGRICULTURAL
	Sections		RESIDENTIAL



Appendix A Figure 8
 County Zoning
 Proposed 115 kV Transmission Line
 Detroit Lakes Public Utilities
 Becker County, MN

APPENDIX A TABLE 1
ENDANGERED AND THREATENED SPECIES BECKER COUNTY
DLPV 115 KV HVLT

Common name	Scientific name	Group	Federal status	State status
A Caddisfly	<u>Oxyethira ecornuta</u>	insect	none	threatened
Beaked Spikerush	<u>Eleocharis rostellata</u>	vascular plant	none	threatened
Bog Adder's Mouth	<u>Malaxis paludosa</u>	vascular plant	none	endangered
Common Tern	<u>Sterna hirundo</u>	bird	none	threatened
Goblin Fern	<u>Botrychium mormo</u>	vascular plant	none	threatened
Hair-like Beak Rush	<u>Rhynchospora capillacea</u>	vascular plant	none	threatened
Hidden-fruit Bladderwort	<u>Utricularia geminiscapa</u>	vascular plant	none	threatened
Horned Grebe	<u>Podiceps auritus</u>	bird	none	endangered
Louisiana Broomrape	<u>Orobanche ludoviciana</u> var. <u>ludoviciana</u>	vascular plant	none	threatened
Northern Long-eared Bat	<u>Myotis septentrionalis</u>	mammal	threatened	special concern
Oakes' Pondweed	<u>Potamogeton oakesianus</u>	vascular plant	none	endangered
Olivaceous Spikerush	<u>Eleocharis flavescens</u> var. <u>olivacea</u>	vascular plant	none	threatened
Poweshiek Skipperling	<u>Oarisma poweshiek</u>	insect	endangered	endangered
Pugnose Shiner	<u>Notropis anogenus</u>	fish	none	threatened
Ram's Head Orchid	<u>Cypripedium arietinum</u>	vascular plant	none	threatened
Rock Sandwort	<u>Minuartia dawsonensis</u>	vascular plant	none	threatened
Sheathed Pondweed	<u>Stuckenia vaginata</u>	vascular plant	none	endangered
Sterile Sedge	<u>Carex sterilis</u>	vascular plant	none	threatened
Stream Parsnip	<u>Berula erecta</u>	vascular plant	none	threatened
Whorled Nutrush	<u>Scleria verticillata</u>	vascular plant	none	threatened
Wilson's Phalarope	<u>Phalaropus tricolor</u>	bird	none	threatened