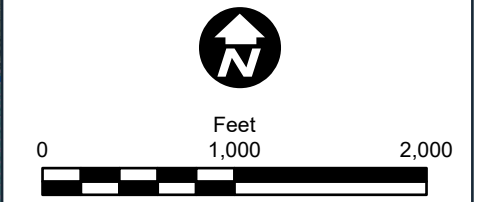
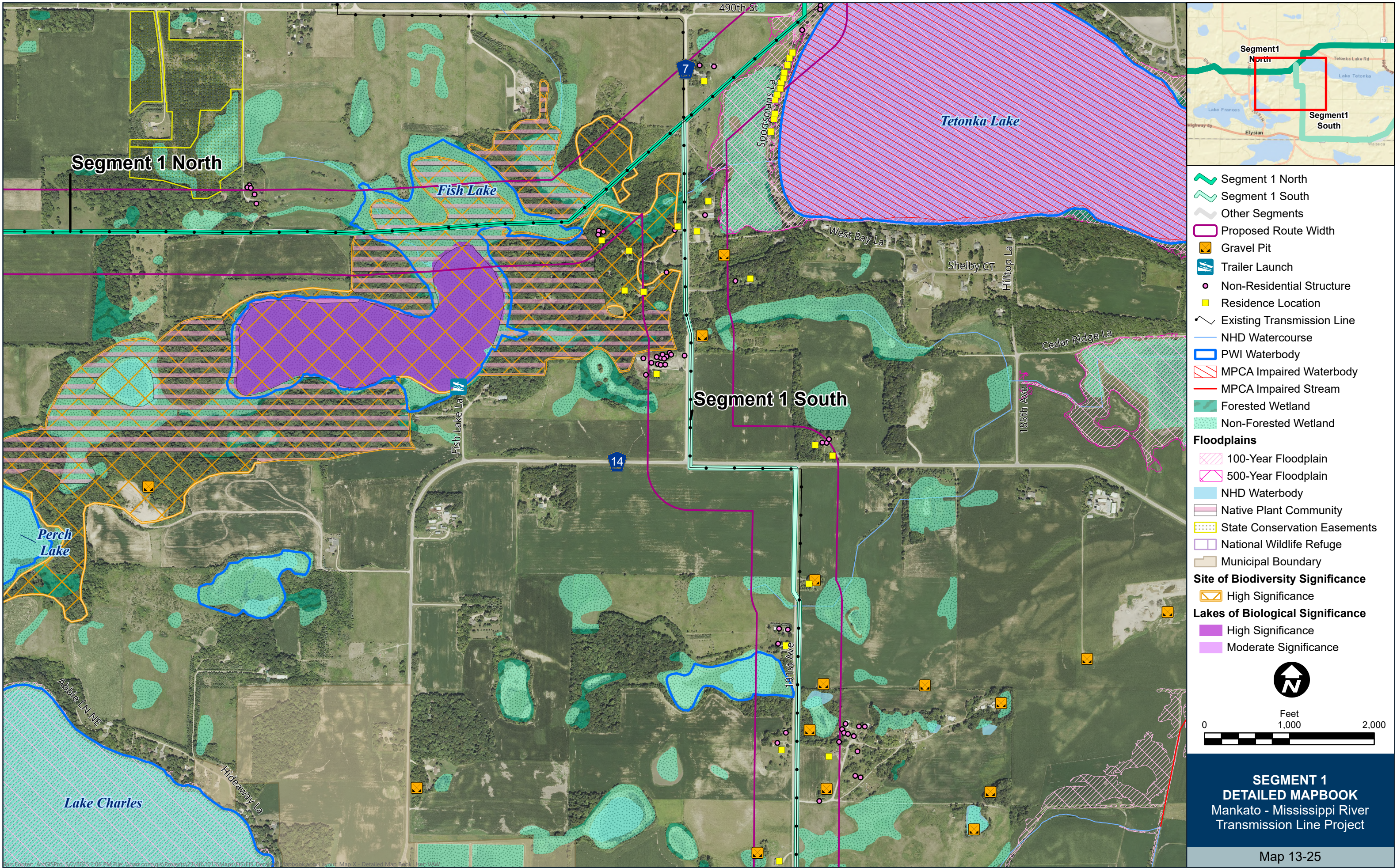
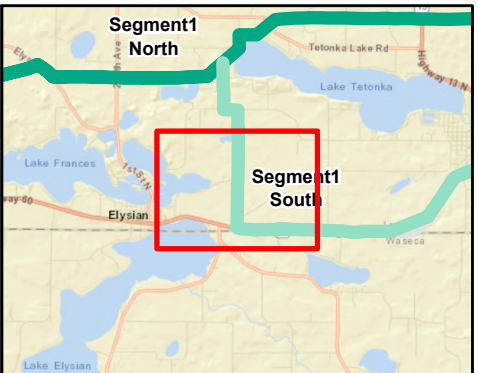
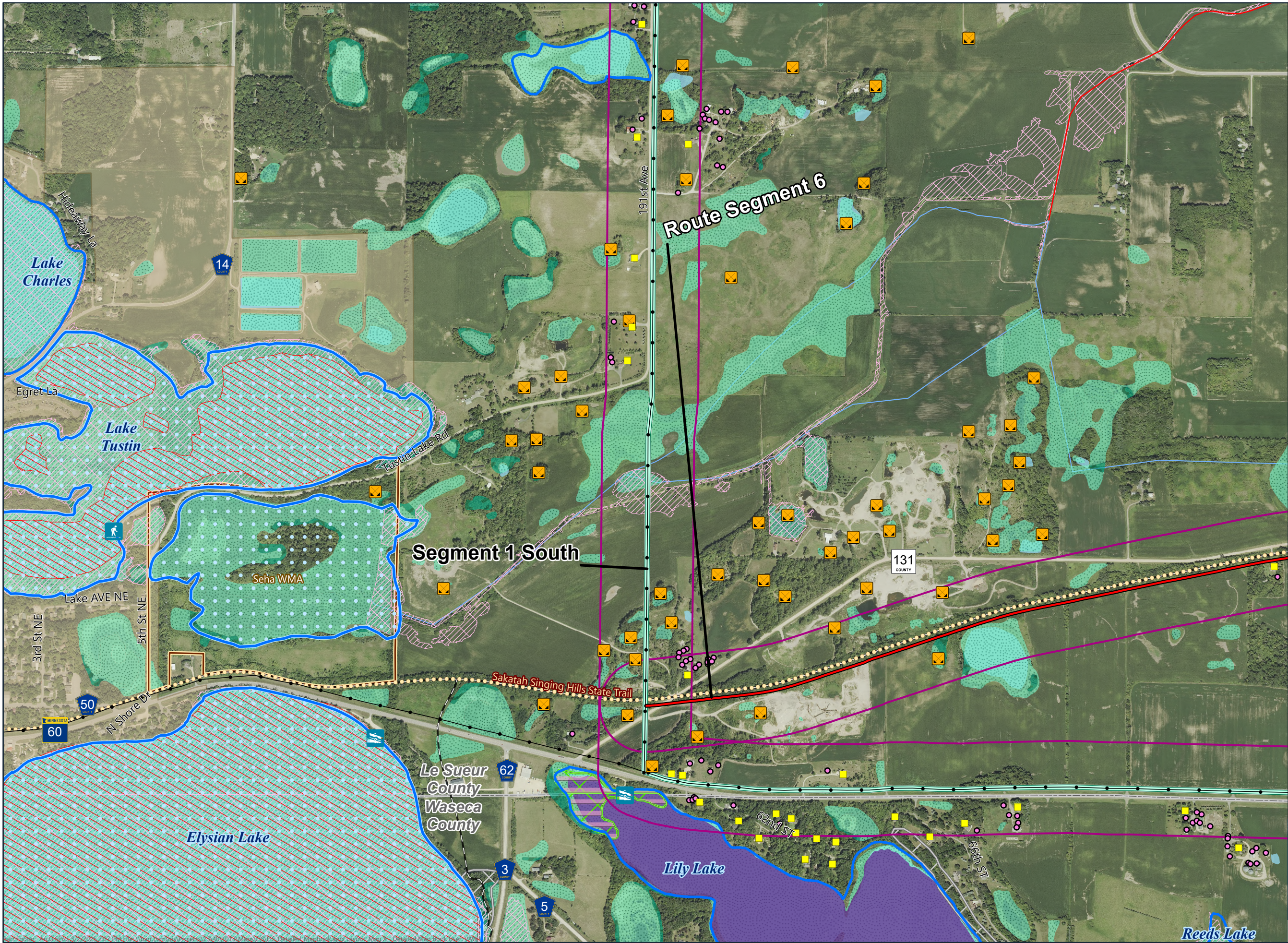


- Segment 1 North
 - Other Segments
 - Proposed Route Width
 - Gravel Pit
 - Trailer Launch
 - Non-Residential Structure
 - Residence Location
 - Existing Transmission Line
 - NHD Watercourse
 - PWI Waterbody
 - MPCA Impaired Waterbody
 - Shallow Wildlife Lake
 - Forested Wetland
 - Non-Forested Wetland
- Floodplains**
- 100-Year Floodplain
 - NHD Waterbody
 - Wildlife Management Area
 - Native Plant Community
 - State Conservation Easements
 - National Wildlife Refuge
 - Municipal Boundary
- Site of Biodiversity Significance**
- High Significance
 - Moderate Significance
- Lakes of Biological Significance**
- Moderate Significance







- Route Segment
- Segment 1 South
- Other Segments
- Proposed Route Width
- Gravel Pit
- Carry-In
- Trailer Launch
- Non-Residential Structure
- Residence Location
- Existing Transmission Line
- State Trail
- NHD Watercourse
- Snowmobile Trail
- PWI Waterbody
- MPCA Impaired Waterbody
- MPCA Impaired Stream
- Shallow Wildlife Lake
- Forested Wetland
- Non-Forested Wetland
- Floodplains**
 - 100-Year Floodplain
 - NHD Waterbody
 - Wildlife Management Area
 - Native Plant Community
 - National Wildlife Refuge
 - Municipal Boundary
- Site of Biodiversity Significance**
 - Moderate Significance
 - Below Minimum Significance
- Lakes of Biological Significance**
 - Outstanding Significance

