

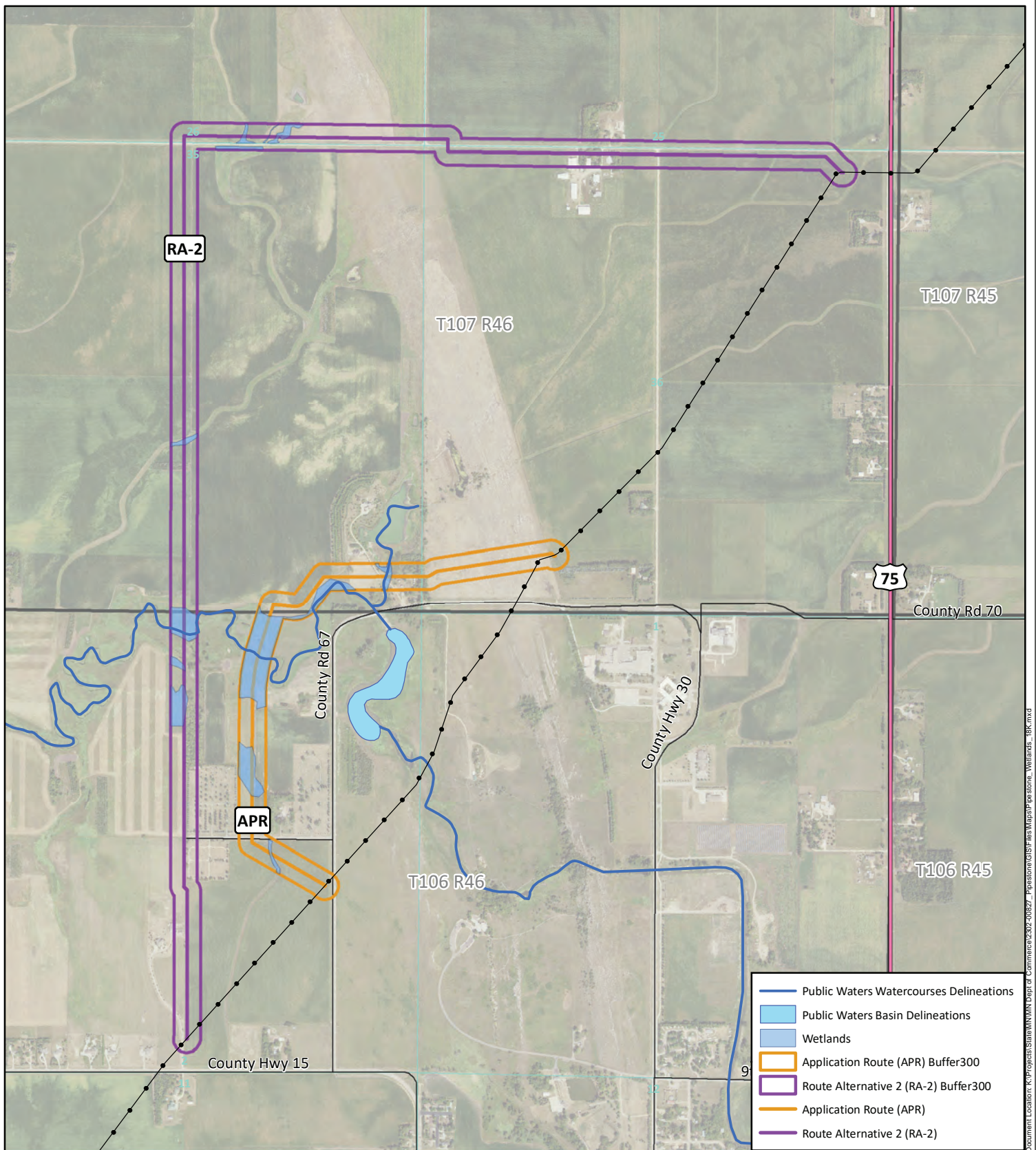


PIPESTONE PIPELINE REROUTE PROJECT

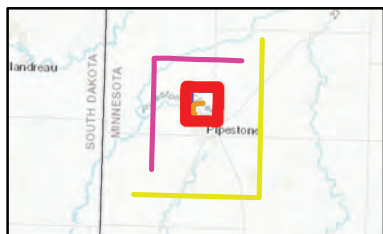
DOCKET NUMBER: PPL-23-109

APPLICANT: MAGELLAN PIPELINE COMPANY L.P.

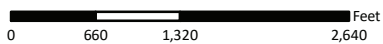
VOLUME II - APPENDIX A-3 FIGURE: WATERWAYS AND WETLAND AREAS



Document Location: K:\Projects\State\MN\Wetlands\Map\Map\RA-2\RA-2.mxd



Wetland Classifications
 Pipestone Pipeline Reroute Project
 Docket Number: PPL-23-109
 Pipestone, MN

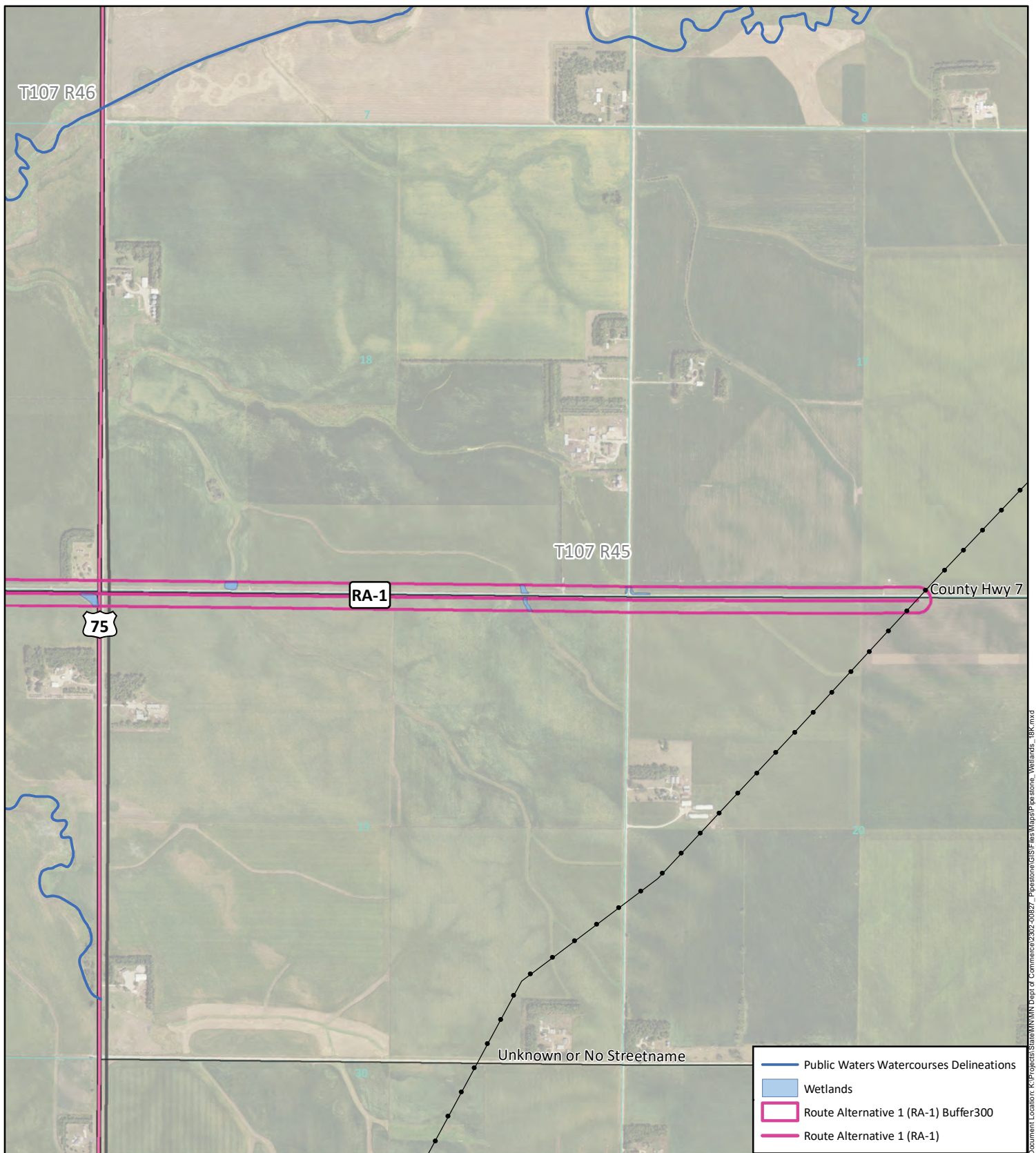


Data Source: US Fish and Wildlife,
 State of MN, NRCS, & KLJ



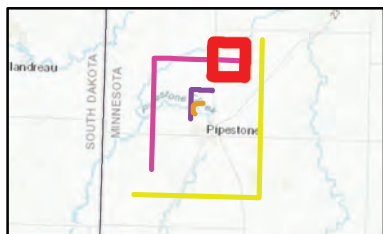
- Existing Magellan Pipeline
- Interstate
- US Highway
- State Highway
- Roads
- Township
- Sections

KLJ Project Number: 2302-00827
 Date Created: 12/6/2023
 Created By: duanekaul

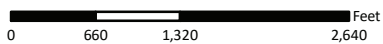


Document Location: K:\Projects\State\Wetlands\Wetlands\Map\Map\Mapstone_Wetlands_IBK.mxd

- Public Waters Watercourses Delineations
- Wetlands
- Route Alternative 1 (RA-1) Buffer300
- Route Alternative 1 (RA-1)



Wetland Classifications
 Pipestone Pipeline Reroute Project
 Docket Number: PPL-23-109
 Pipestone, MN

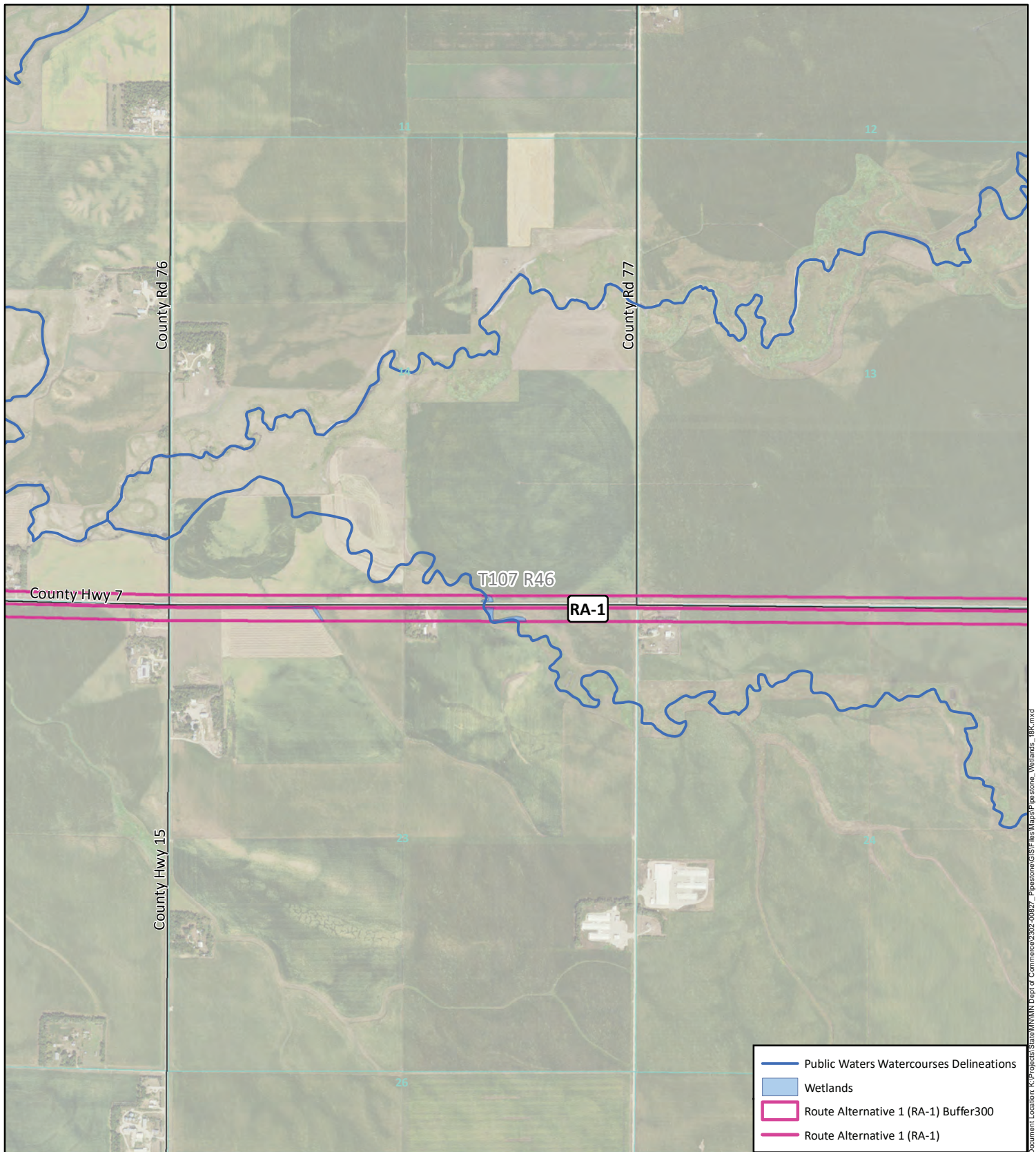


Data Source: US Fish and Wildlife,
 State of MN, NRCS, & KLJ

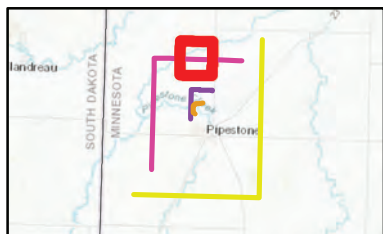


- Existing Magellan Pipeline
- Interstate
- US Highway
- State Highway
- Roads
- Township
- Sections

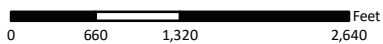
KLJ Project Number: 2302-00827
 Date Created: 12/6/2023
 Created By: duanekaul



Document Location: K:\Projects\State\MMN\Dept of Commerce\2302-00827_Pipestone\GIS\Final\Map\Pipestone_Wetlands_IBK.mxd



Wetland Classifications
 Pipestone Pipeline Reroute Project
 Docket Number: PPL-23-109
 Pipestone, MN

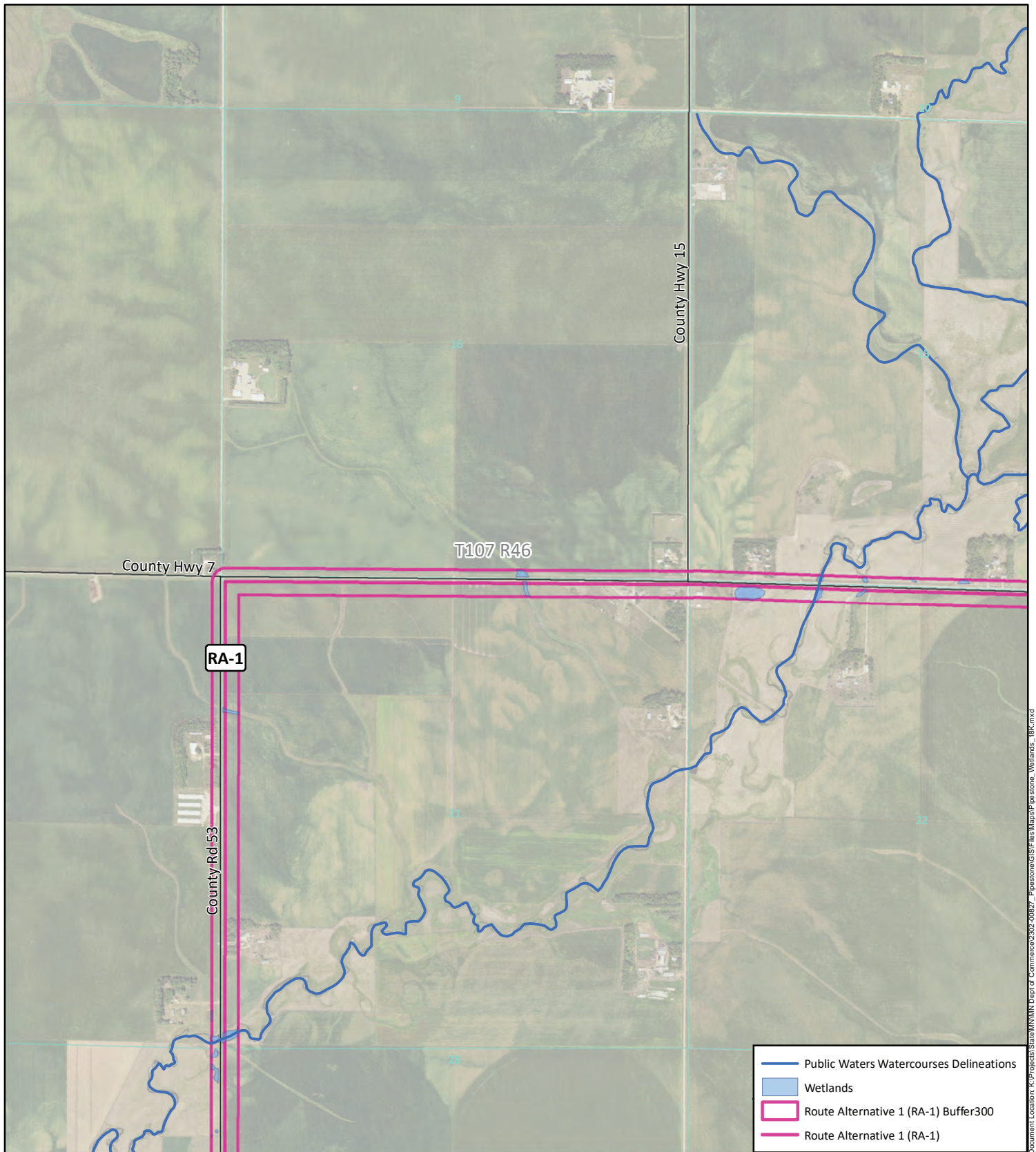


Data Source: US Fish and Wildlife,
 State of MN, NRCS, & KLJ

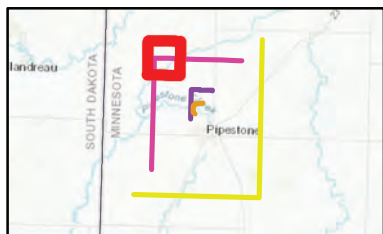


- Existing Magellan Pipeline
- Interstate
- US Highway
- State Highway
- Roads
- Township
- Sections

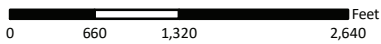
KLJ Project Number: 2302-00827
 Date Created: 12/6/2023
 Created By: duanekaul



- Public Waters Watercourses Delineations
- Wetlands
- Route Alternative 1 (RA-1) Buffer300
- Route Alternative 1 (RA-1)



Wetland Classifications
 Pipestone Pipeline Reroute Project
 Docket Number: PPL-23-109
 Pipestone, MN

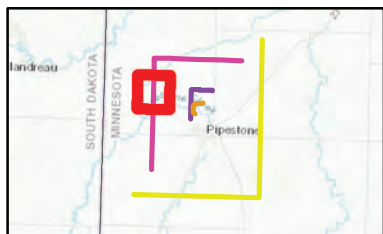
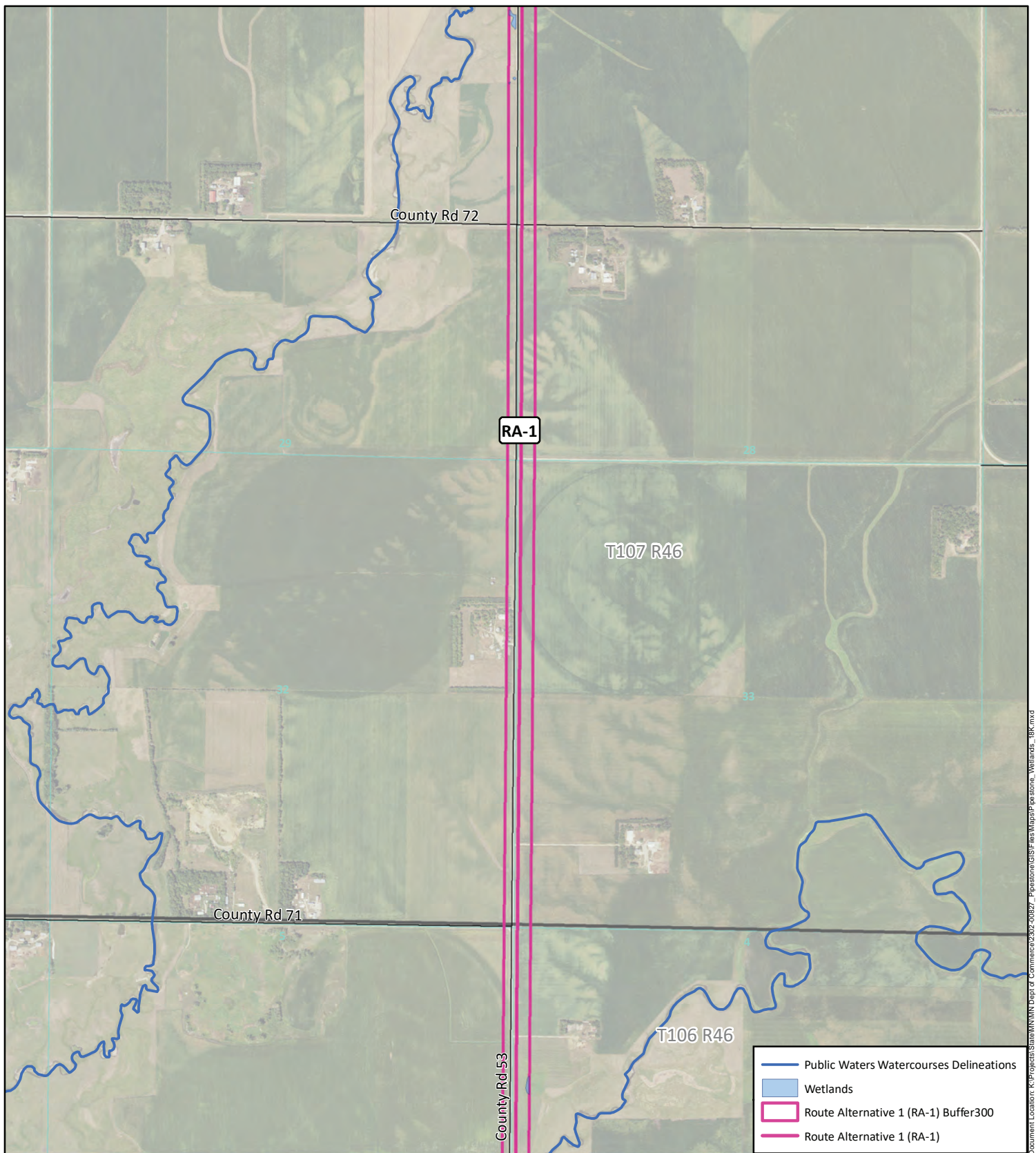


Data Source: US Fish and Wildlife,
 State of MN, NRCS, & KLJ

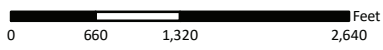


- Existing Magellan Pipeline
- Interstate
- US Highway
- State Highway
- Roads
- Township
- Sections

KLJ Project Number: 2302-00827
 Date Created: 12/6/2023
 Created By: duanekaul



Wetland Classifications
 Pipestone Pipeline Reroute Project
 Docket Number: PPL-23-109
 Pipestone, MN



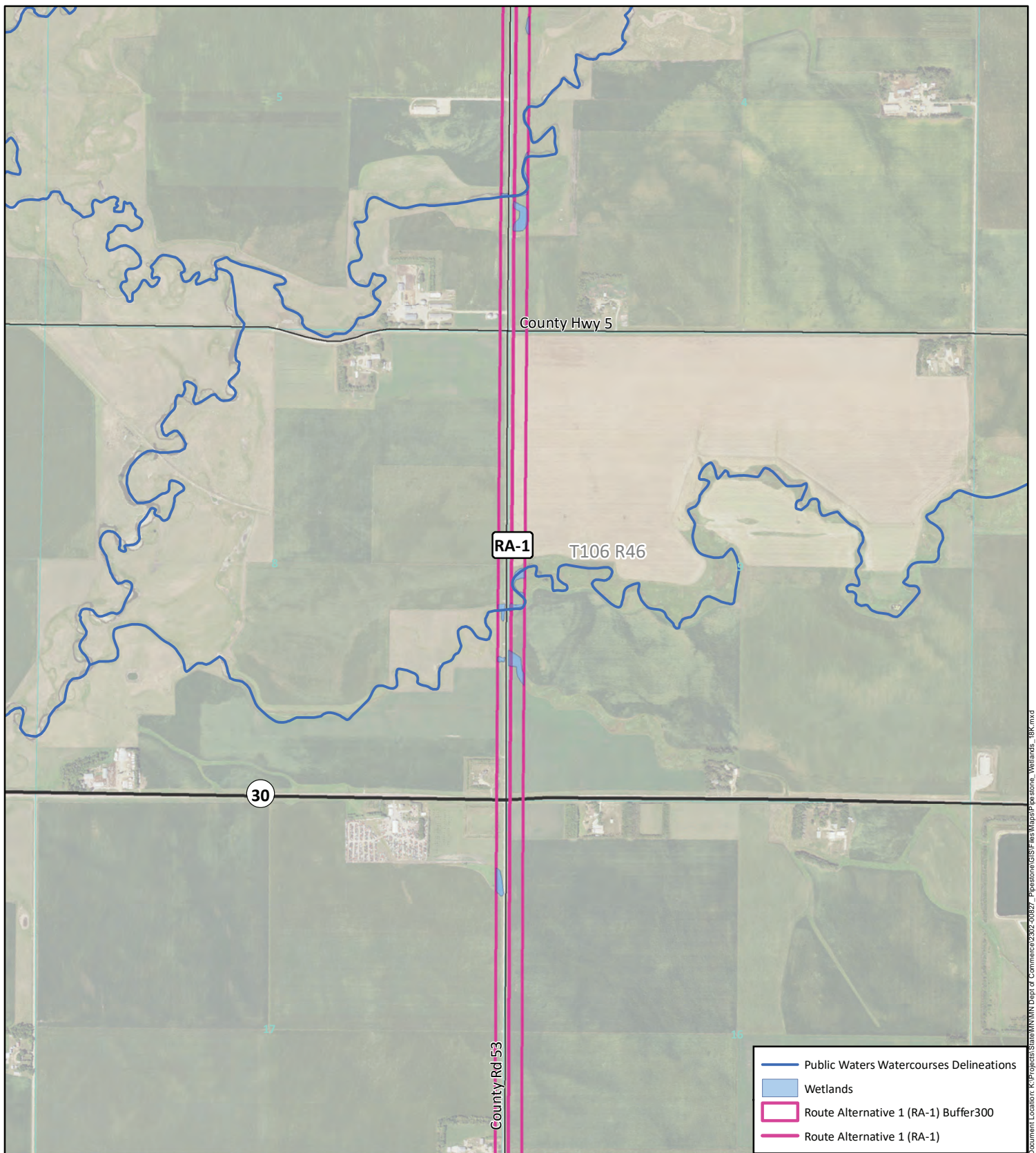
Data Source: US Fish and Wildlife,
 State of MN, NRCS, & KLJ



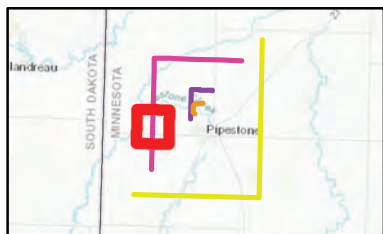
- Existing Magellan Pipeline
- Interstate
- US Highway
- State Highway
- Roads
- Township
- Sections

KLJ Project Number: 2302-00827
 Date Created: 12/6/2023
 Created By: duanekaul

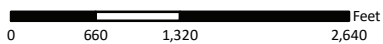
Document Location: K:\Projects\State\MN\Dept of Commerce\2302-00827_Pipestone\GIS\Final\Map\Pipestone_Wetlands_IBK.mxd



Document Location: K:\Projects\State\Wetlands\Map\Map\Pipestone_Wetlands_IBK.mxd



Wetland Classifications
 Pipestone Pipeline Reroute Project
 Docket Number: PPL-23-109
 Pipestone, MN

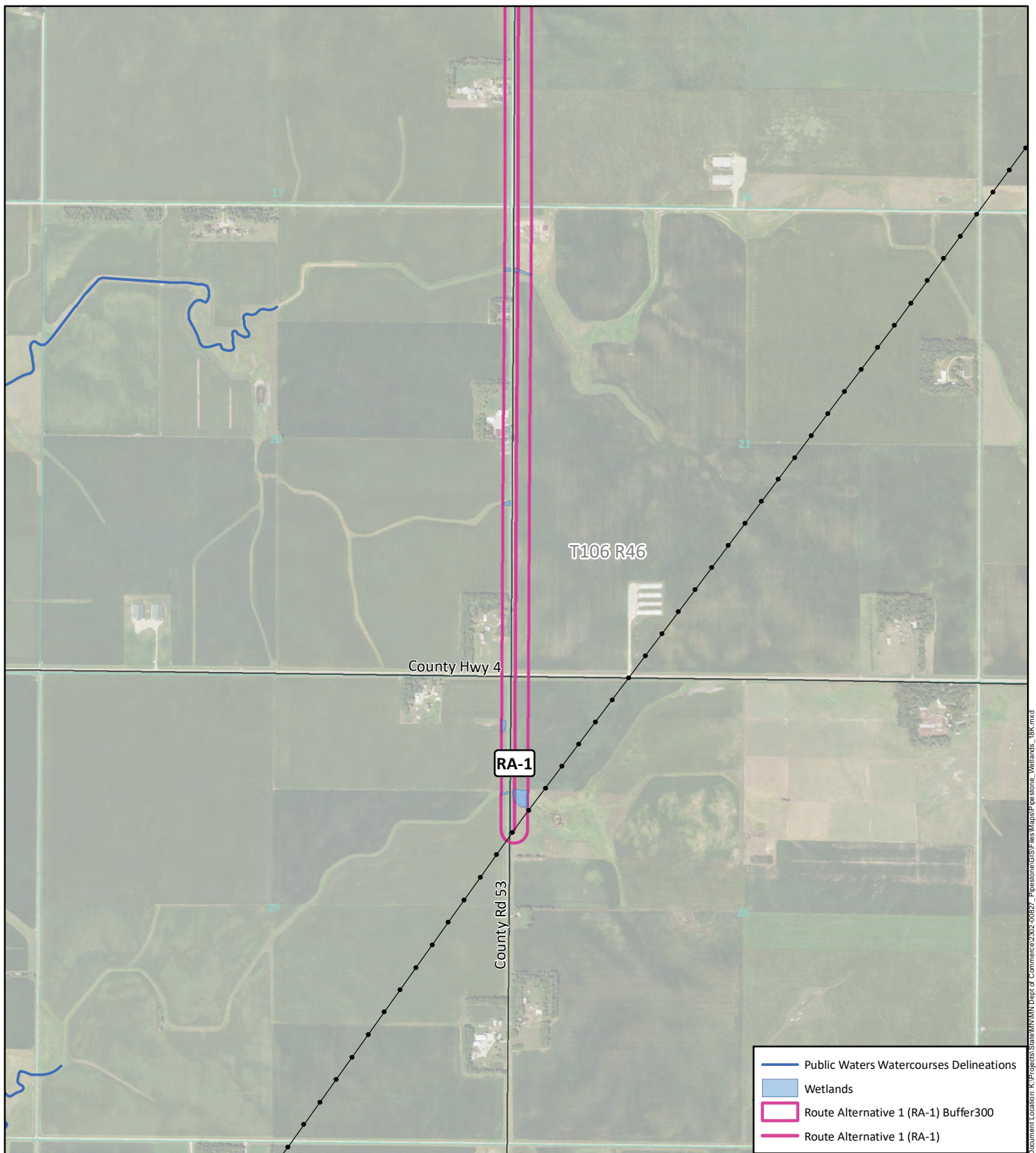


Data Source: US Fish and Wildlife,
 State of MN, NRCS, & KLJ



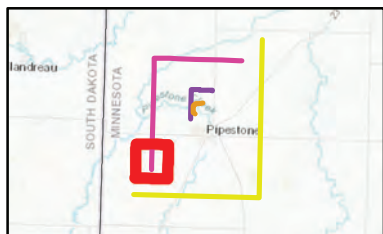
- Existing Magellan Pipeline
- Interstate
- US Highway
- State Highway
- Roads
- Township
- Sections

KLJ Project Number: 2302-00827
 Date Created: 12/6/2023
 Created By: duanekaul

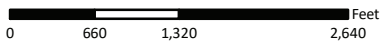


Document Location: K:\Projects\State\MN\Wetlands\Map\RA-1\Map\RA-1\Wetlands_Buffer.mxd

- Public Waters Watercourses Delineations
- Wetlands
- Route Alternative 1 (RA-1) Buffer300
- Route Alternative 1 (RA-1)



Wetland Classifications
 Pipestone Pipeline Reroute Project
 Docket Number: PPL-23-109
 Pipestone, MN

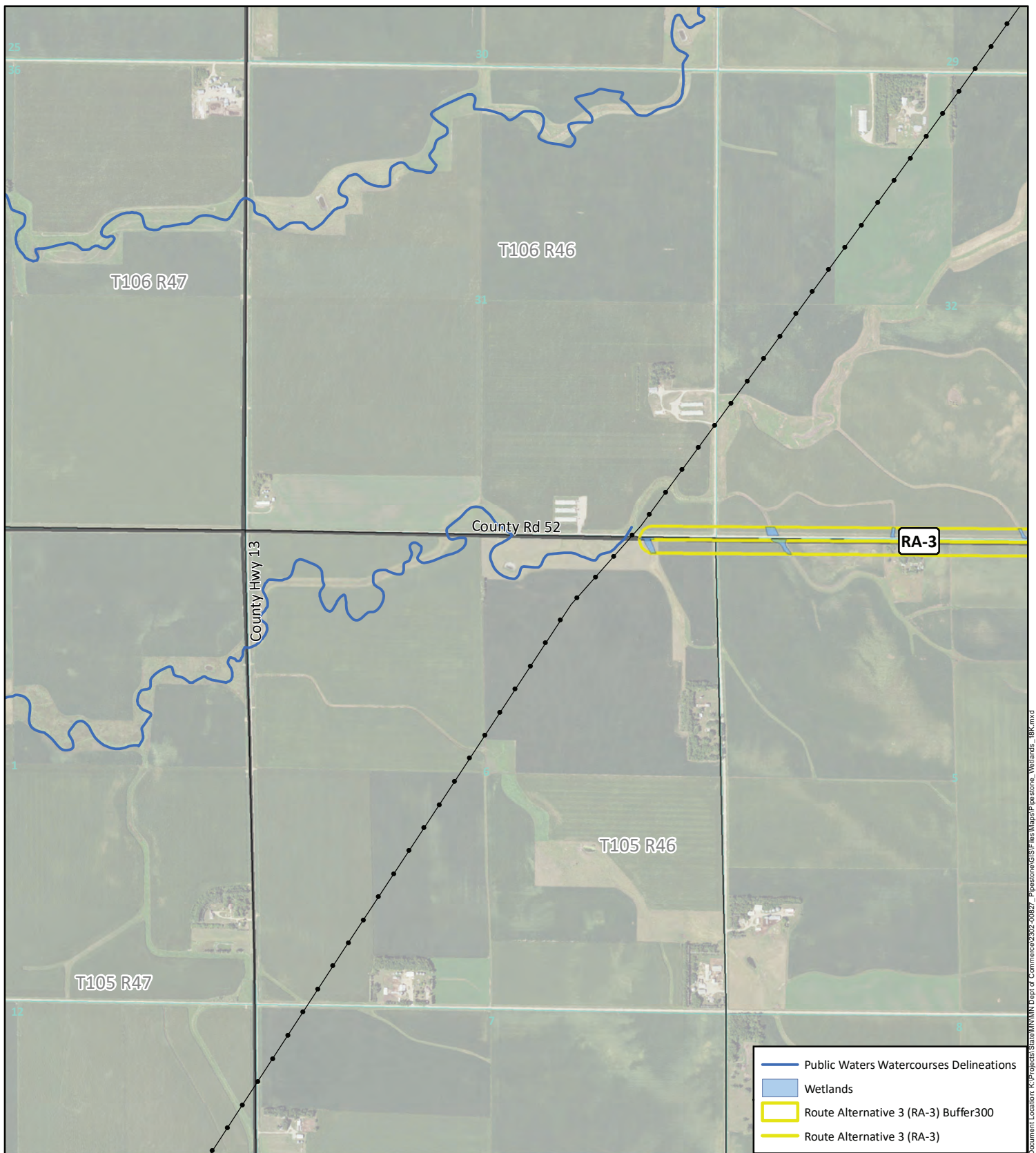


Data Source: US Fish and Wildlife,
 State of MN, NRCS, & KLJ

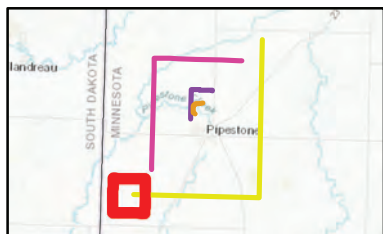


- Existing Magellan Pipeline
- Interstate
- US Highway
- State Highway
- Roads
- Township
- Sections

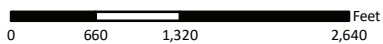
KLJ Project Number: 2302-00827
 Date Created: 12/6/2023
 Created By: duanekaul



Document Location: K:\Projects\State\MN\Dept of Commerce\2302-00827_Pipestone\GIS\Final\Map\RA-3\Wetlands_IBK.mxd



Wetland Classifications
 Pipestone Pipeline Reroute Project
 Docket Number: PPL-23-109
 Pipestone, MN

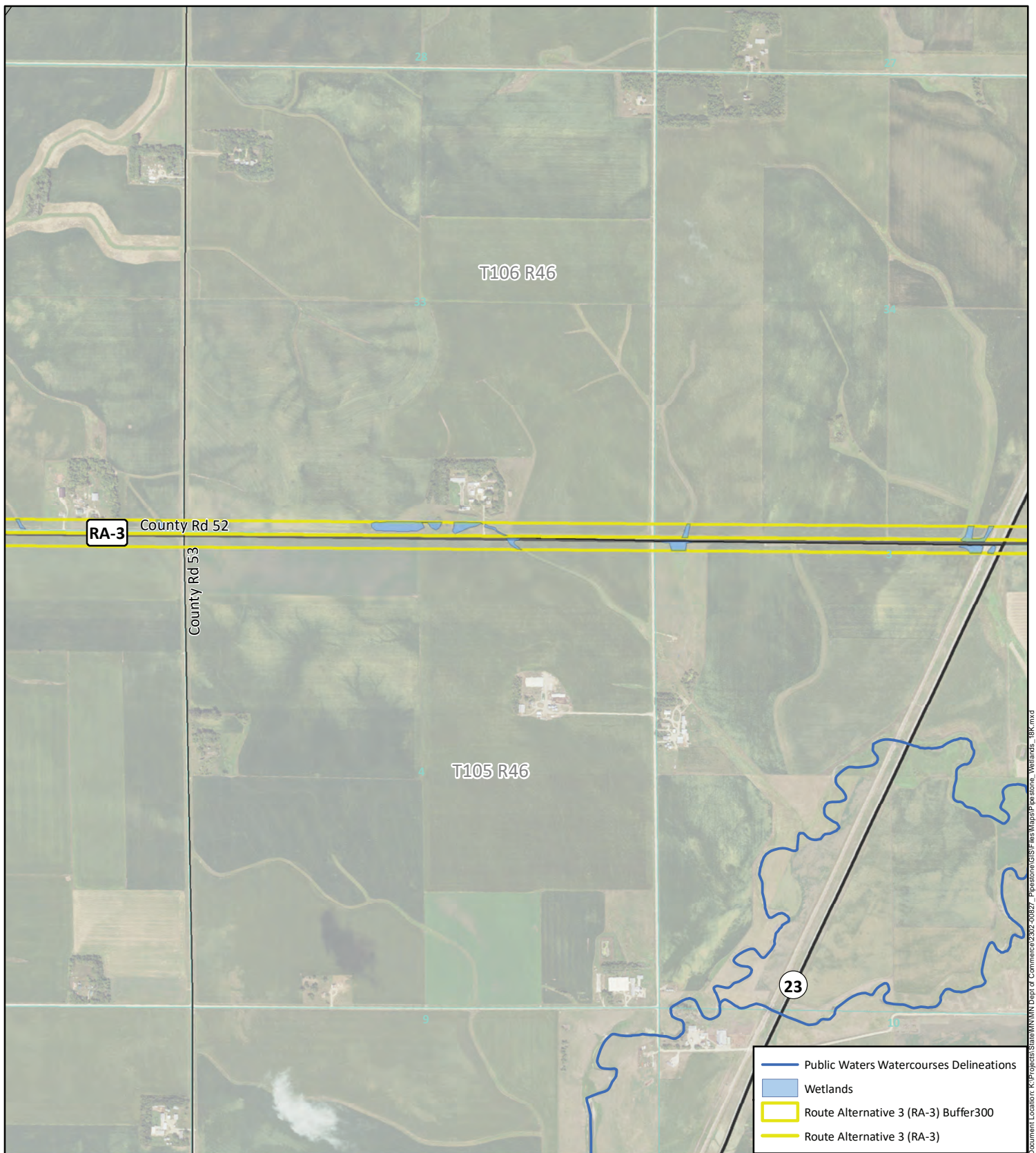


Data Source: US Fish and Wildlife,
 State of MN, NRCS, & KJL

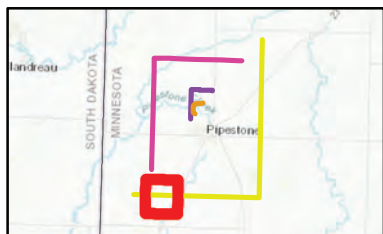


- Existing Magellan Pipeline
- Interstate
- US Highway
- State Highway
- Roads
- Township
- Sections

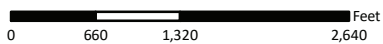
KJL Project Number: 2302-00827
 Date Created: 12/6/2023
 Created By: duanekaul



Document Location: K:\Projects\State\Wetlands\Map\Map\Mapstone_Wetlands_IBK.mxd



Wetland Classifications
 Pipestone Pipeline Reroute Project
 Docket Number: PPL-23-109
 Pipestone, MN



Data Source: US Fish and Wildlife,
 State of MN, NRCS, & KLJ

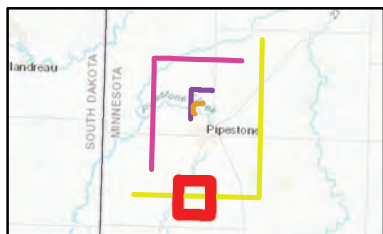


- Existing Magellan Pipeline
- Interstate
- US Highway
- State Highway
- Roads
- Township
- Sections

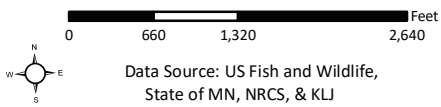
KLJ Project Number: 2302-00827
 Date Created: 12/6/2023
 Created By: duanekaul



Document Location: K:\Projects\State\MN\Dept of Commerce\3302-00827_Pipestone\GIS\Final\Map\RA-3\Wetlands_Buffer.mxd

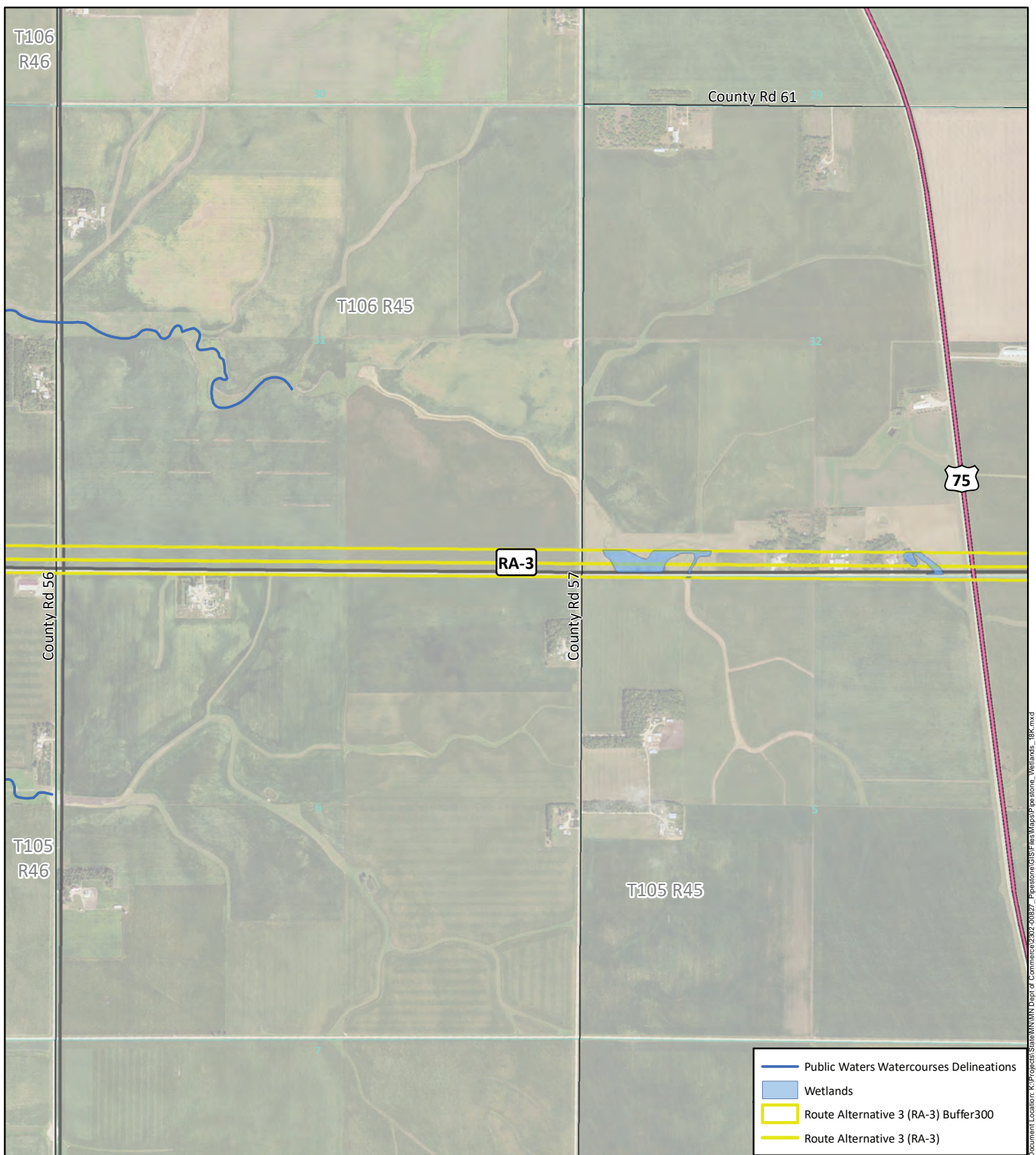


Wetland Classifications
 Pipestone Pipeline Reroute Project
 Docket Number: PPL-23-109
 Pipestone, MN

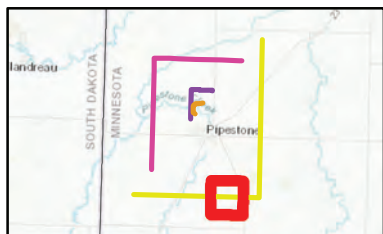


- Existing Magellan Pipeline
- Interstate
- US Highway
- State Highway
- Roads
- Township
- Sections

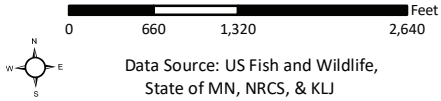
KLI Project Number: 2302-00827
 Date Created: 12/6/2023
 Created By: duanekaul



- Public Waters Watercourses Delineations
- Wetlands
- Route Alternative 3 (RA-3) Buffer300
- Route Alternative 3 (RA-3)



Wetland Classifications
 Pipestone Pipeline Reroute Project
 Docket Number: PPL-23-109
 Pipestone, MN

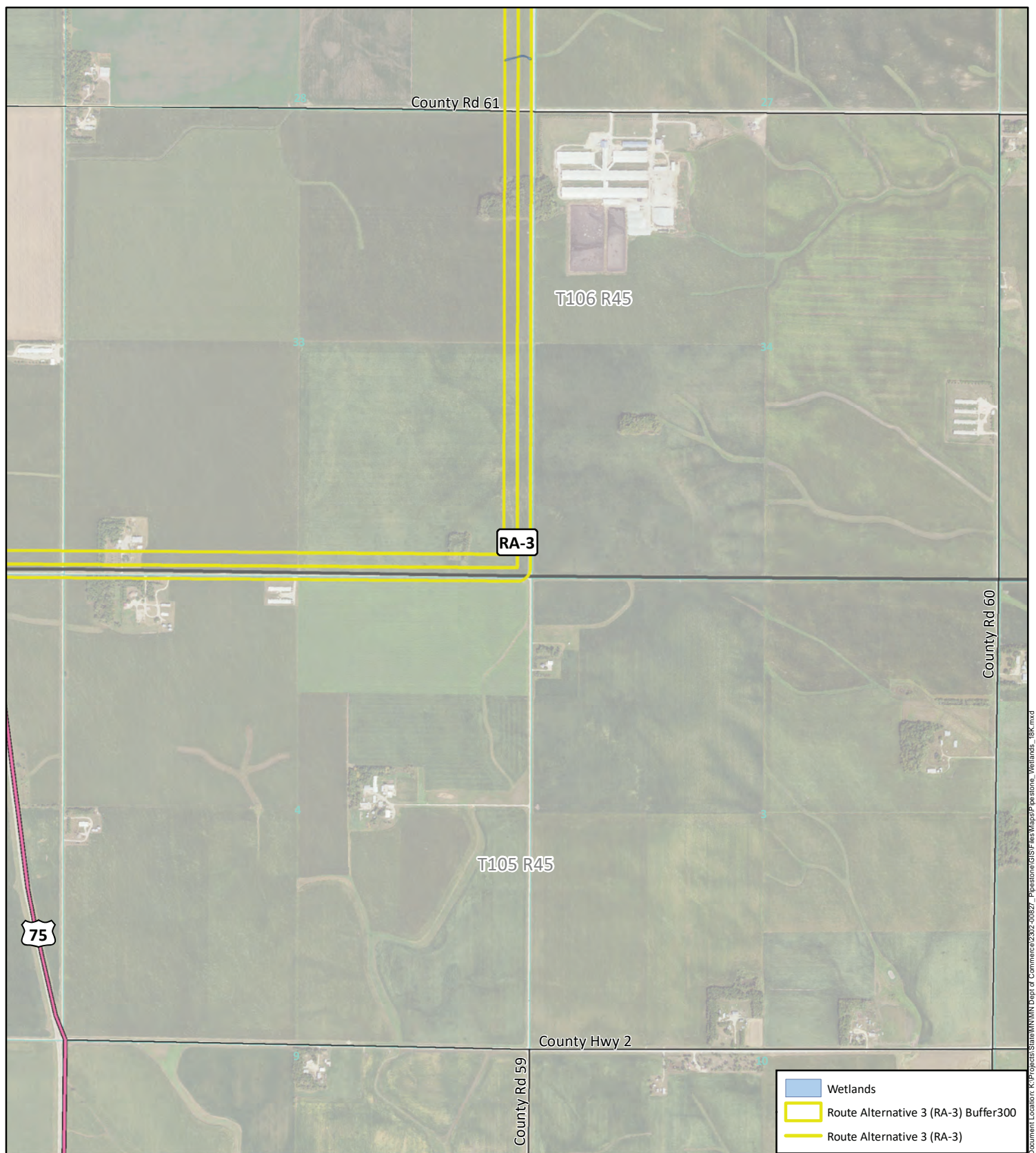


Data Source: US Fish and Wildlife,
 State of MN, NRCS, & KLI

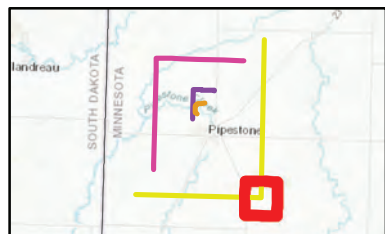


- Existing Magellan Pipeline
- Interstate
- US Highway
- State Highway
- Roads
- Township
- Sections

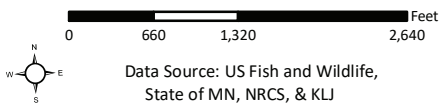
KLI Project Number: 2302-00827
 Date Created: 12/6/2023
 Created By: duanekaul



Document Location: K:\Projects\State\MN\Dept of Commerce\2302-00827_Pipestone\GIS\Final\Map\RA-3\Wetlands_Buffer300.mxd

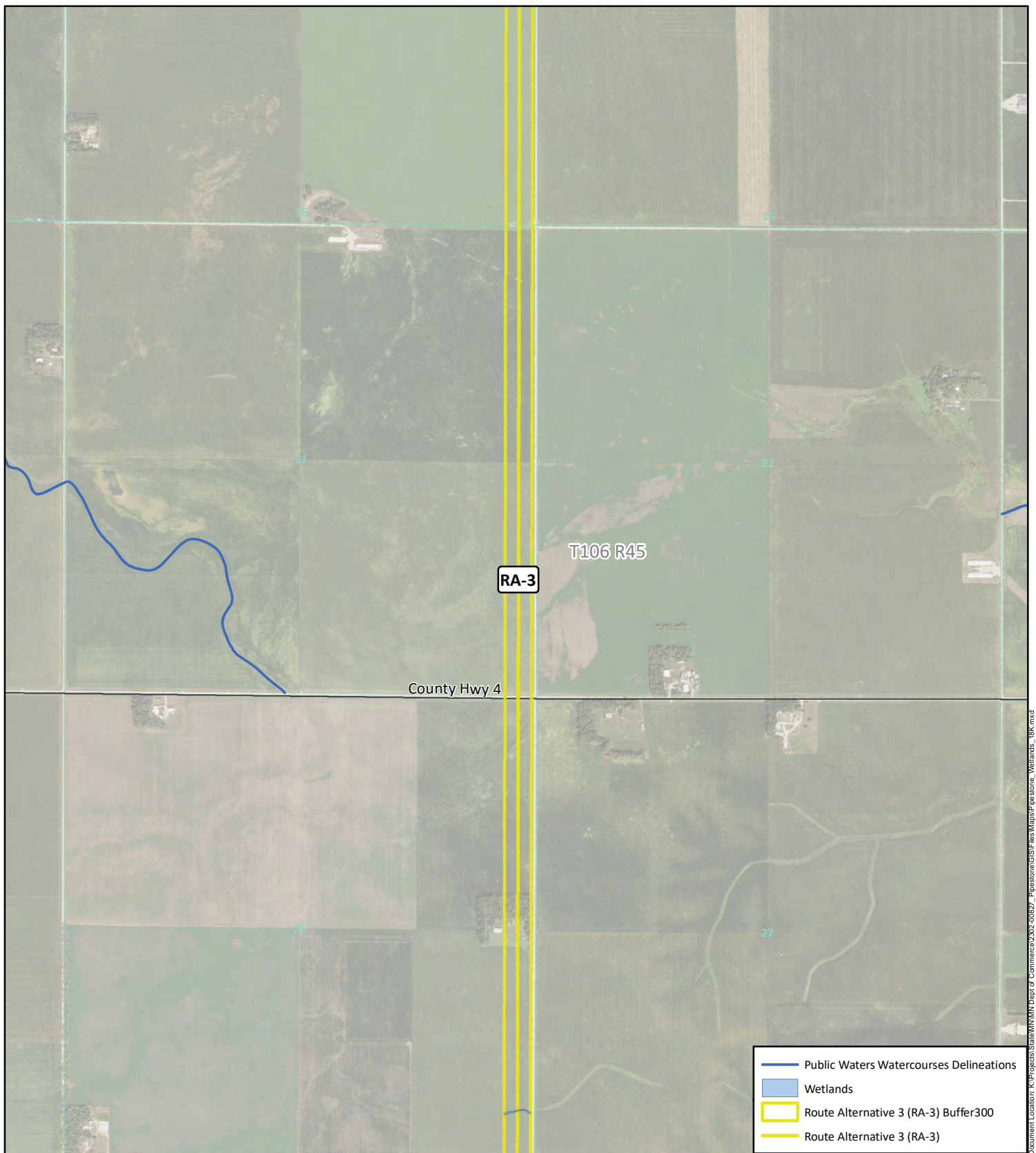


Wetland Classifications
 Pipestone Pipeline Reroute Project
 Docket Number: PPL-23-109
 Pipestone, MN


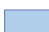




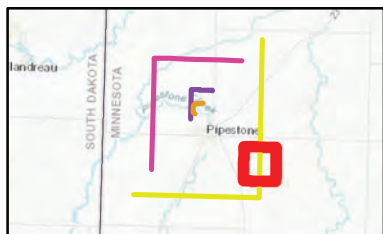
- Existing Magellan Pipeline
- Interstate
- US Highway
- State Highway
- Roads
- Township
- Sections

KLJ Project Number: 2302-00827
 Date Created: 12/6/2023
 Created By: duanekaul

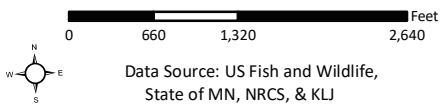









Document Location: K:\Projects\State\MN\Dept of Commerce\2302-00827_Pipestone\GIS\Final\Map\Pipestone_Wetlands_BK.mxd

-  Public Waters Watercourses Delineations
-  Wetlands
-  Route Alternative 3 (RA-3) Buffer300
-  Route Alternative 3 (RA-3)



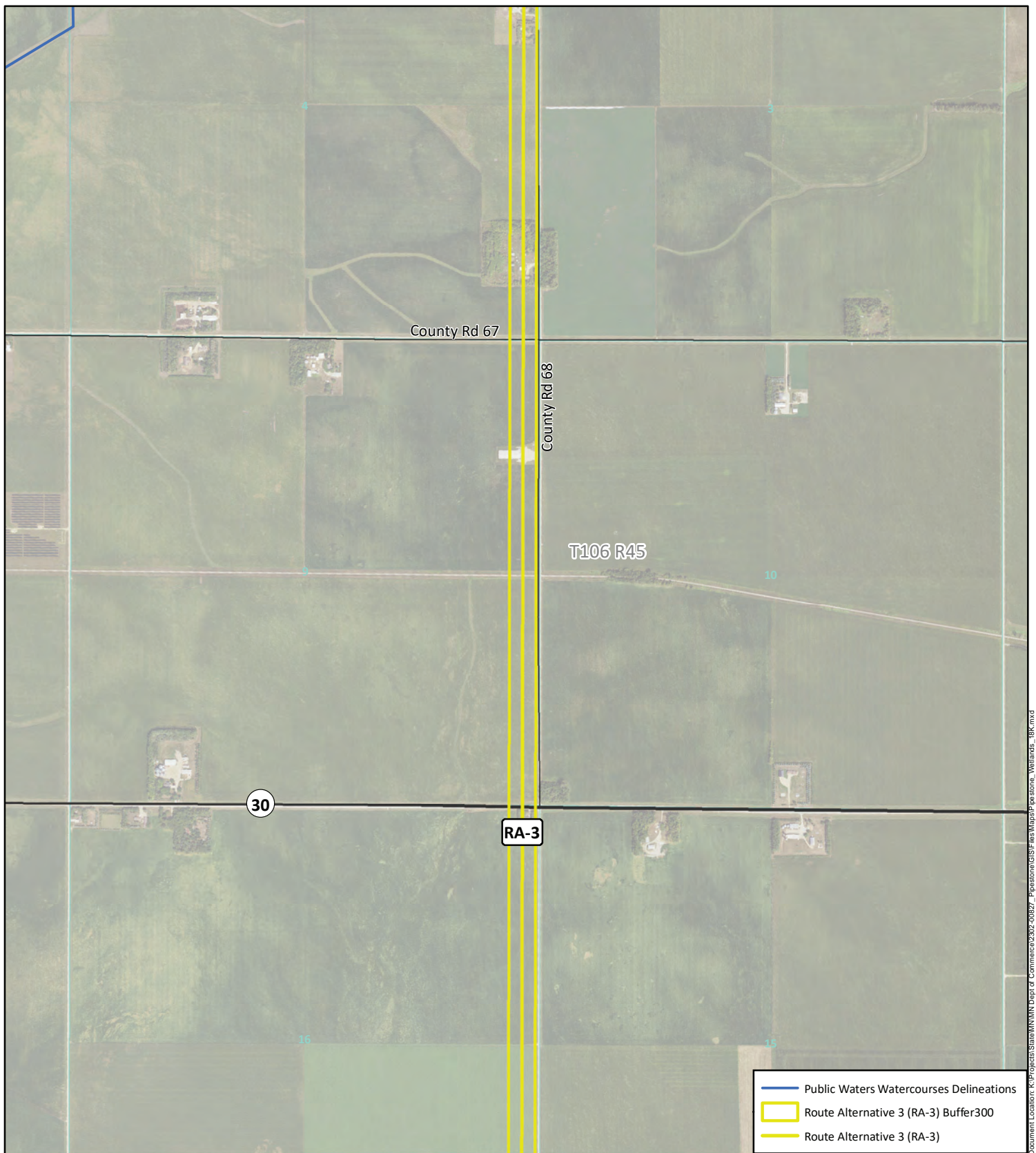
Wetland Classifications
 Pipestone Pipeline Reroute Project
 Docket Number: PPL-23-109
 Pipestone, MN



-  Existing Magellan Pipeline
-  Interstate
-  US Highway
-  State Highway
-  Roads
-  Township
-  Sections

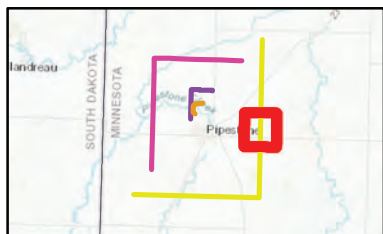


KLJ Project Number: 2302-00827
 Date Created: 12/6/2023
 Created By: duanekaul

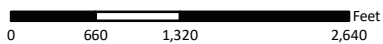


Document Location: K:\Projects\State\MN\Dept of Commerce\2302-00827 - Pipastone\GIS\Final\Map\RA-3\Wetlands_18K.mxd

- Public Waters Watercourses Delineations
- Route Alternative 3 (RA-3) Buffer300
- Route Alternative 3 (RA-3)



Wetland Classifications
 Pipestone Pipeline Reroute Project
 Docket Number: PPL-23-109
 Pipestone, MN

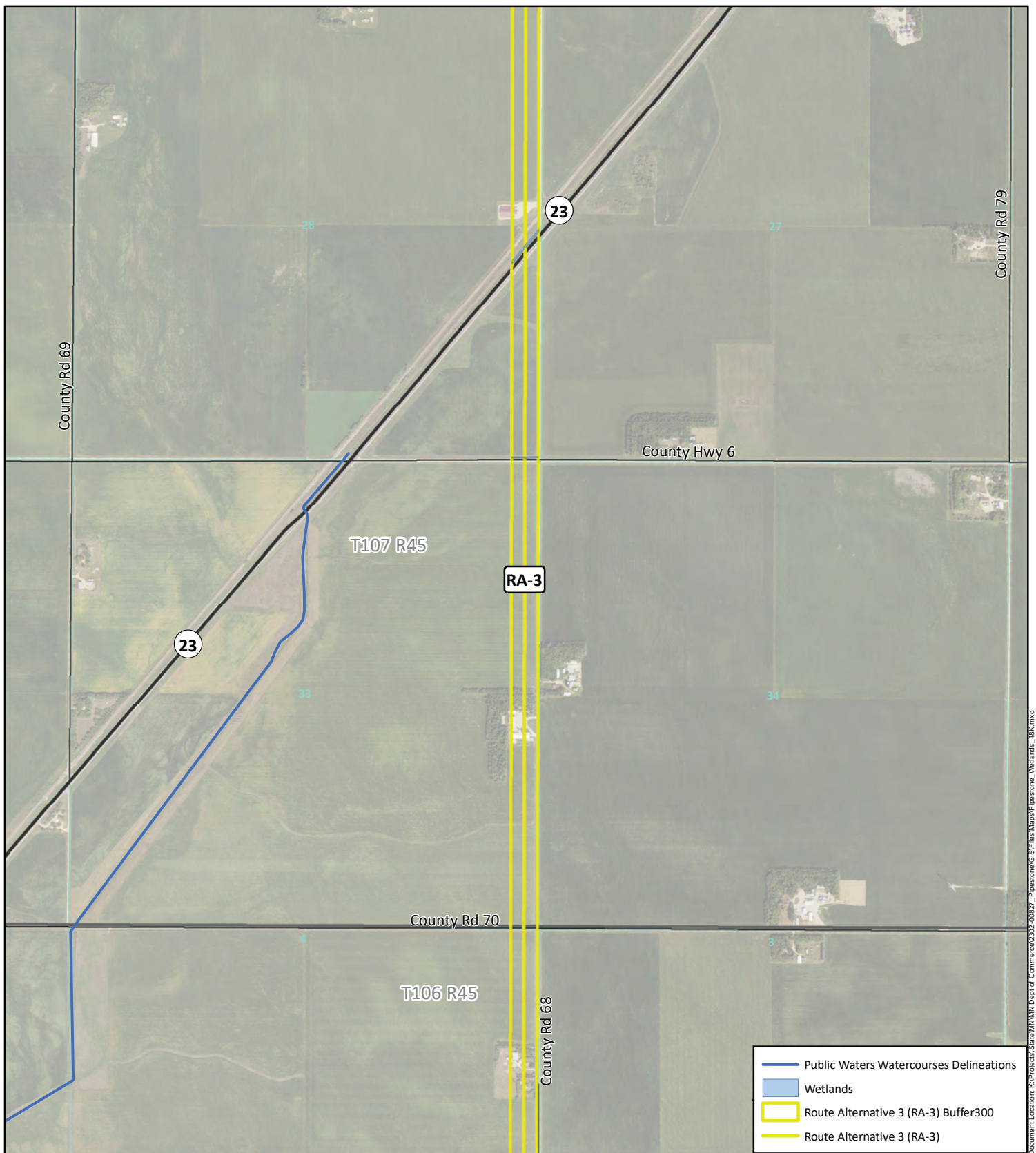


Data Source: US Fish and Wildlife,
 State of MN, NRCS, & KLJ



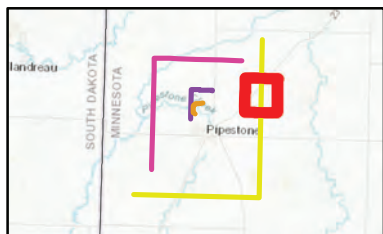
- Existing Magellan Pipeline
- Interstate
- US Highway
- State Highway
- Roads
- Township
- Sections

KLJ Project Number: 2302-00827
 Date Created: 12/6/2023
 Created By: duanekaul

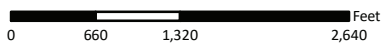


Document Location: K:\Projects\State\MN\Dept of Commerce\3302-00827_Pipestone\GIS\Final\Map\Pipestone_Wetlands_IBK.mxd

- Public Waters Watercourses Delineations
- Wetlands
- Route Alternative 3 (RA-3) Buffer300
- Route Alternative 3 (RA-3)



Wetland Classifications
 Pipestone Pipeline Reroute Project
 Docket Number: PPL-23-109
 Pipestone, MN

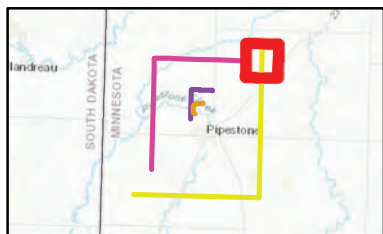
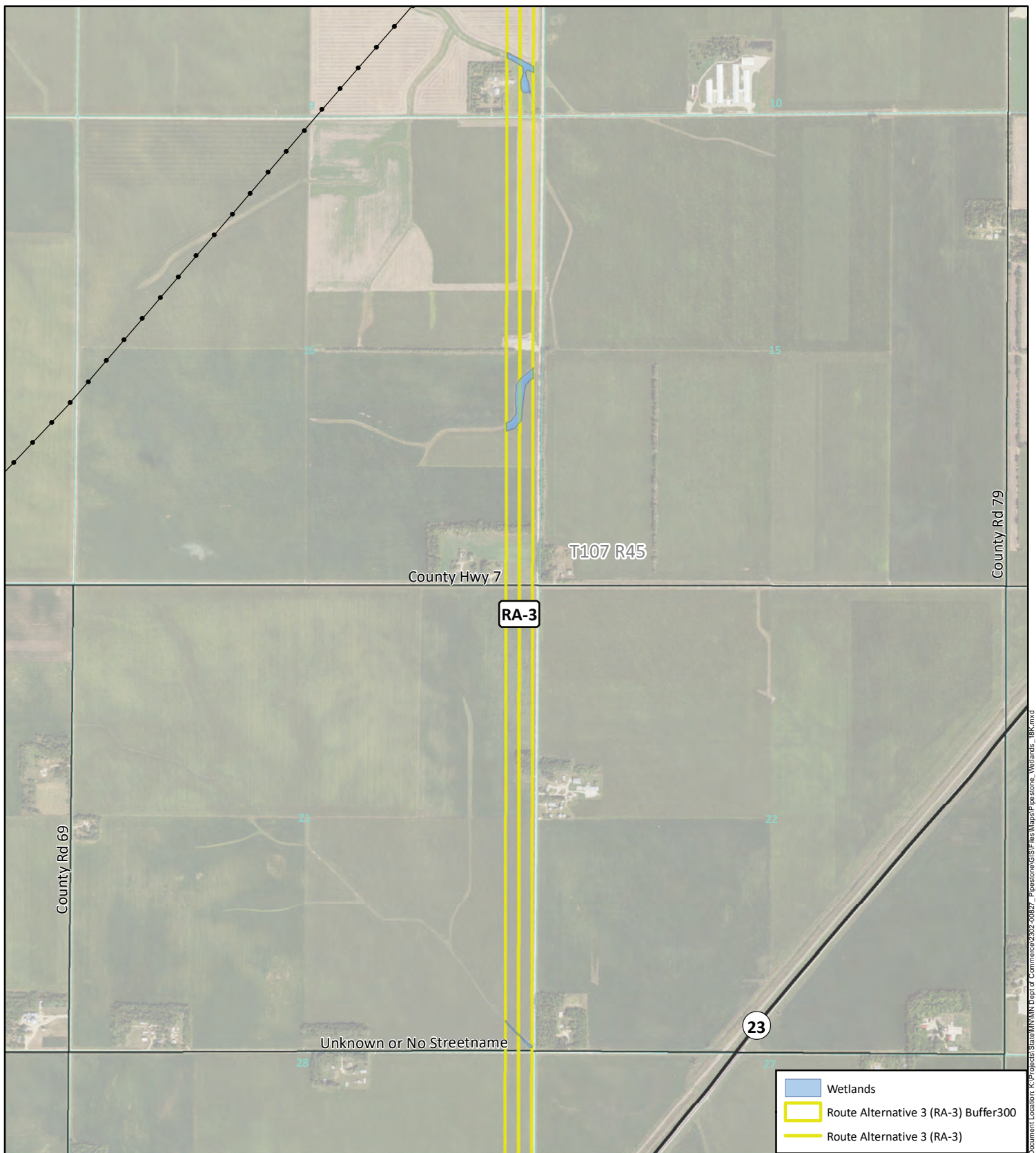


Data Source: US Fish and Wildlife,
 State of MN, NRCS, & KLJ

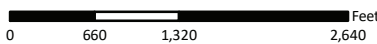


- Existing Magellan Pipeline
- Interstate
- US Highway
- State Highway
- Roads
- Township
- Sections

KLJ Project Number: 2302-00827
 Date Created: 12/6/2023
 Created By: duanekaul



Wetland Classifications
 Pipestone Pipeline Reroute Project
 Docket Number: PPL-23-109
 Pipestone, MN

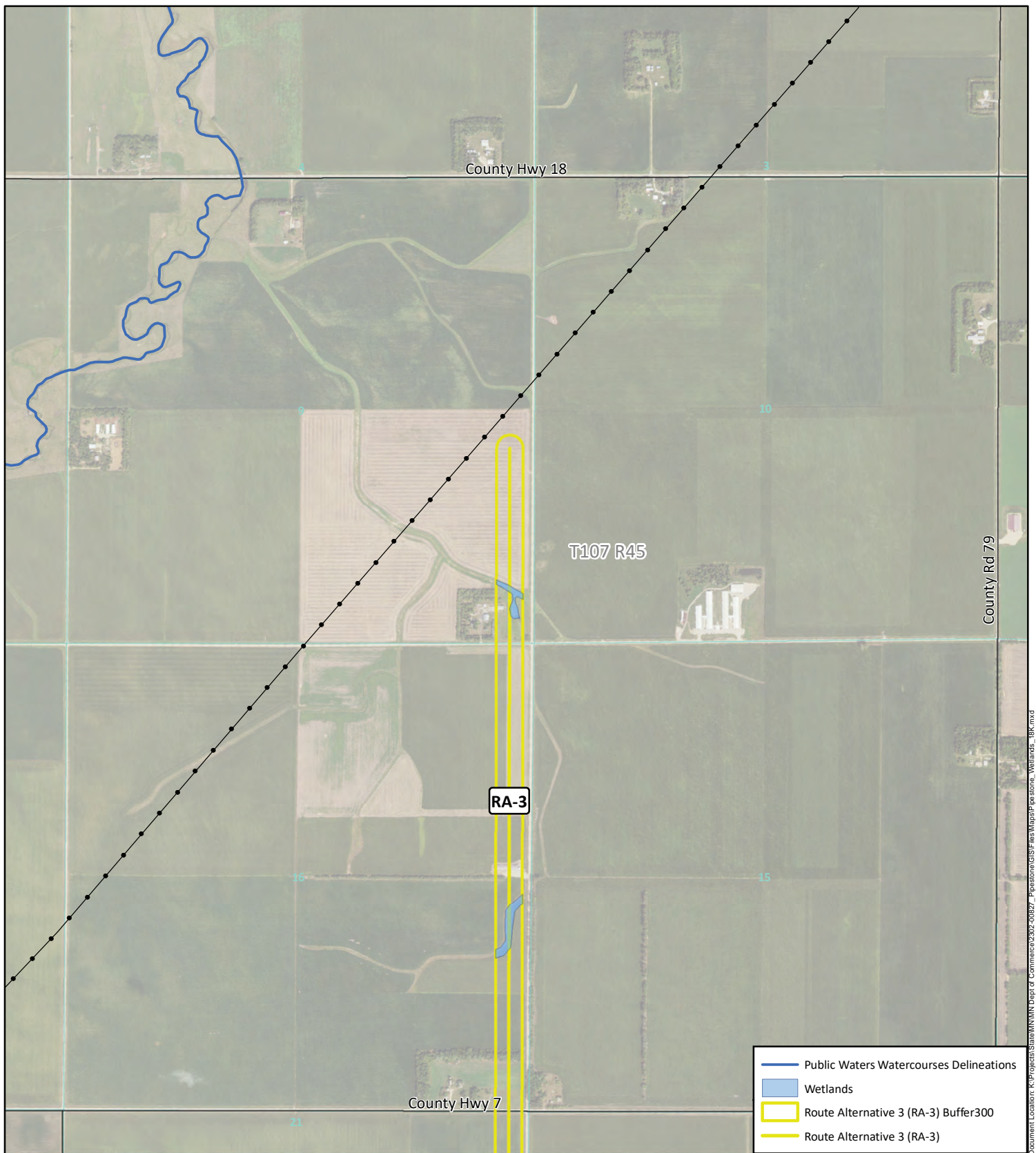


Data Source: US Fish and Wildlife,
 State of MN, NRCS, & KLJ

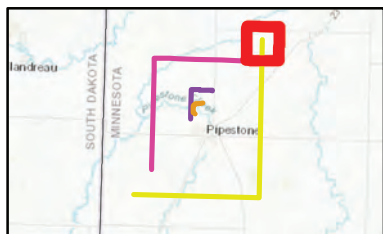


- Existing Magellan Pipeline
- Interstate
- US Highway
- State Highway
- Roads
- Township
- Sections

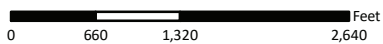
KLJ Project Number: 2302-00827
 Date Created: 12/6/2023
 Created By: duanekaul



Document Location: K:\Projects\State\Wetlands\Map\Map\pipe stone Wetlands_BK.mxd



Wetland Classifications
 Pipestone Pipeline Reroute Project
 Docket Number: PPL-23-109
 Pipestone, MN



Data Source: US Fish and Wildlife,
 State of MN, NRCS, & KLJ



- Existing Magellan Pipeline
- Interstate
- US Highway
- State Highway
- Roads
- Township
- Sections

KLJ Project Number: 2302-00827
 Date Created: 12/6/2023
 Created By: duanekaul