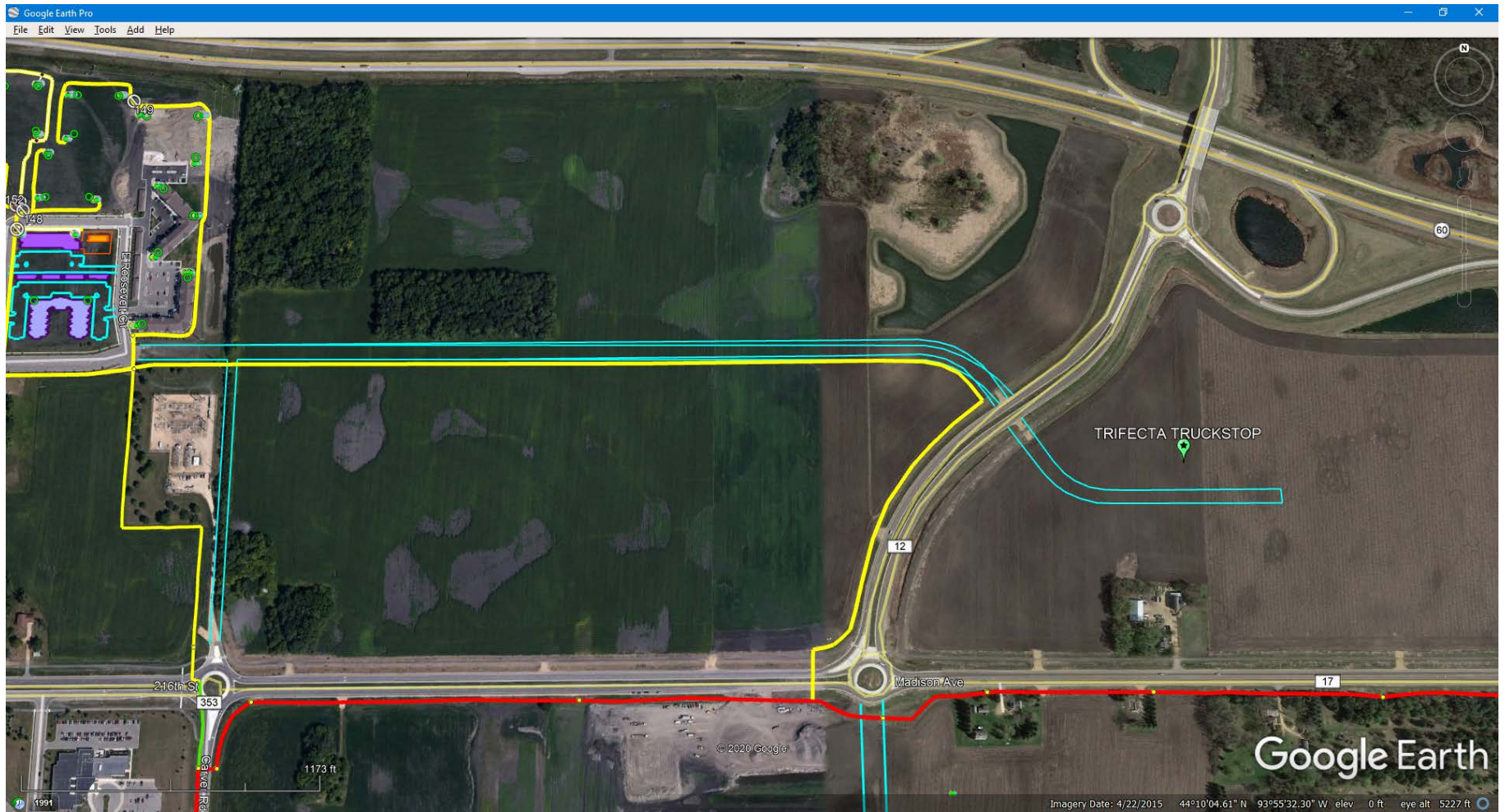


## EXHIBIT D



Trifecta Truck Stop on mid-right side.

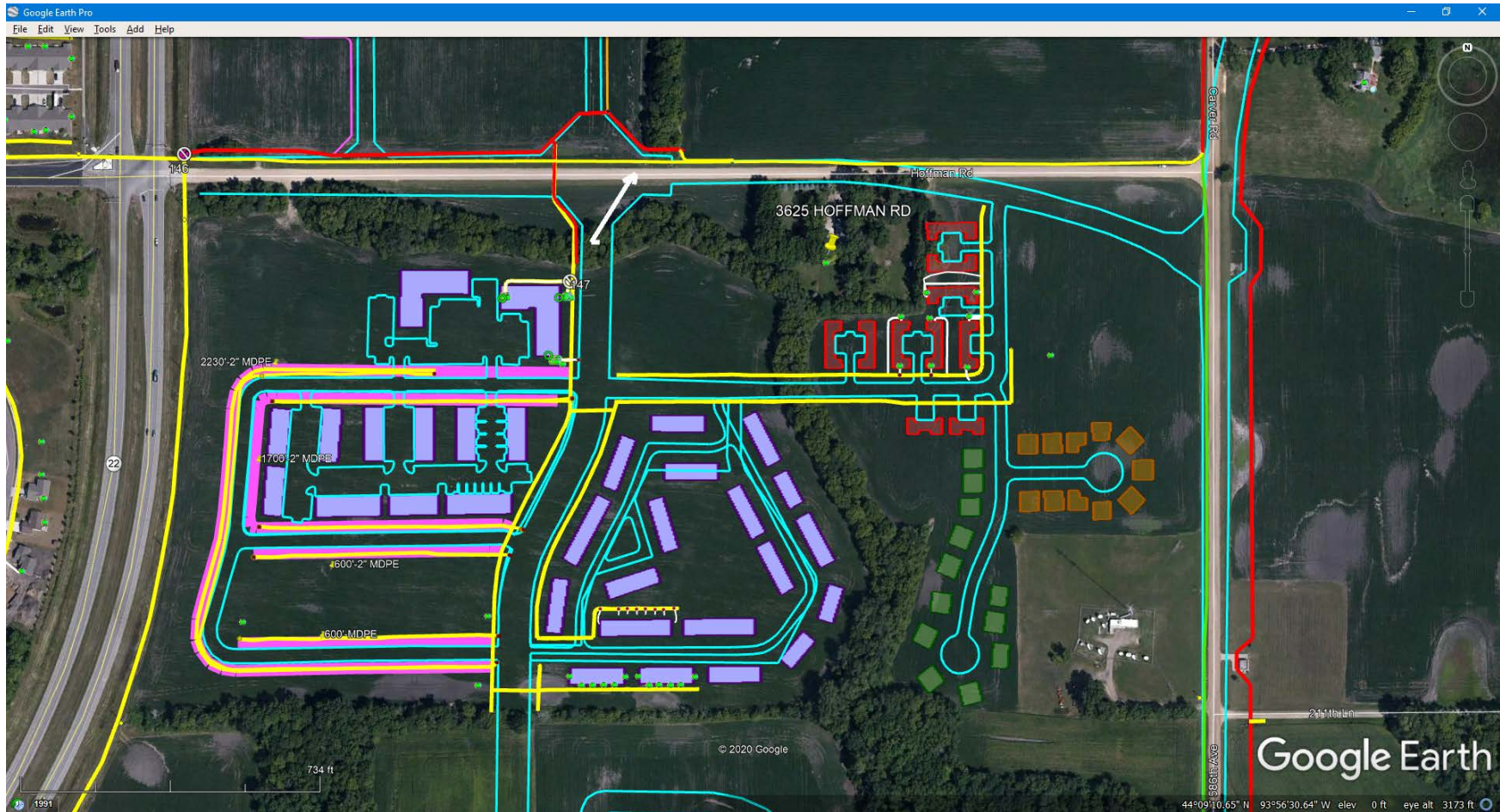
Yellow and red lines show GMG facilities.

Purple buildings are currently served by GMG.

CenterPoint presumably intends to parallel GMG's facilities running on the south side of Adams across the middle of the map.



## EXHIBIT E



Existing Customer 3625 Hoffman Road shown in upper right quadrant.

Yellow and red lines show GMG facilities.

Purple and red buildings are currently served by GMG.

Green and orange buildings are planned development that has been awarded to GMG.

CenterPoint presumably intends to parallel GMG's facilities running on the north side of Hoffman Road.