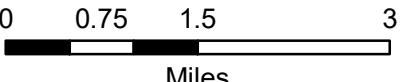


Figure 5b
Land Ownership
Acciona 3.0-132

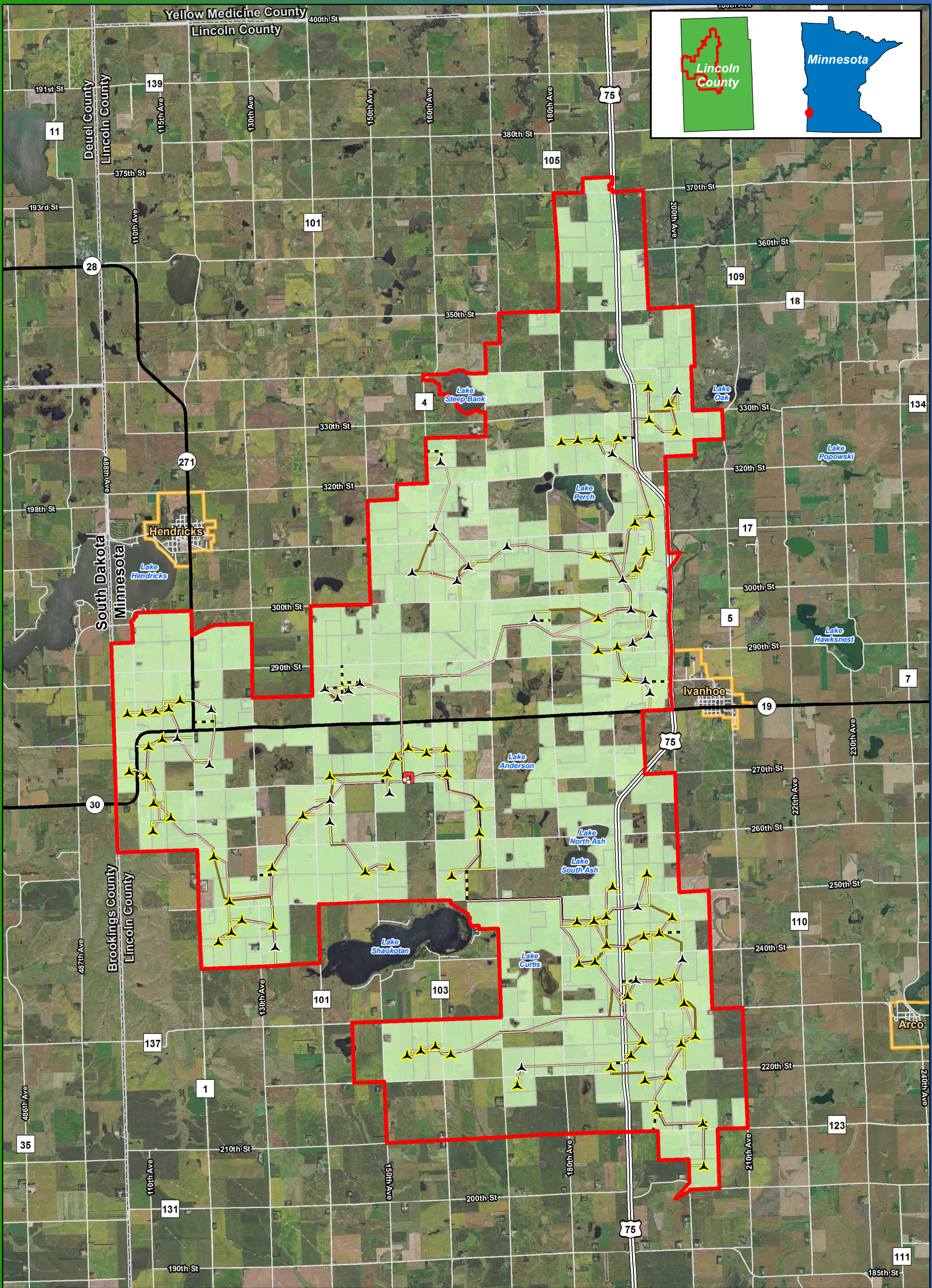
Blazing Star Wind Farm 2
Lincoln County, MN

44.460125, -96.336861

- | | | |
|--|------------------------------|----------------------------|
| | Preliminary Turbine Location | Site Control Status |
| | Alternate Turbine Location | Non-Participants |
| | Project Area Boundary | Participants |
| | Project Substation | |
| | Access Road | |
| | Alternate Access Road | |
| | Collection Line | |
| | Crane Path | |



Imagery Source: 2015 Color FSA
 Data Source: Geronimo Energy, MN DNR, Census, Lincoln Co.

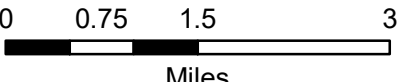


**Figure 5c
Land Ownership
GE 2.5-116**

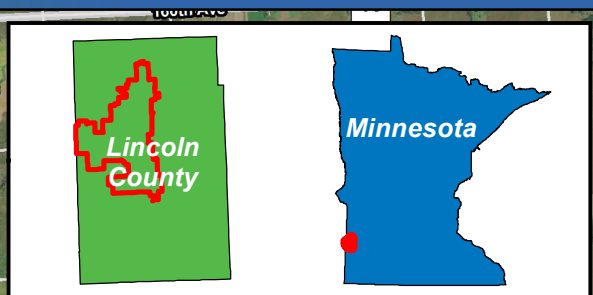
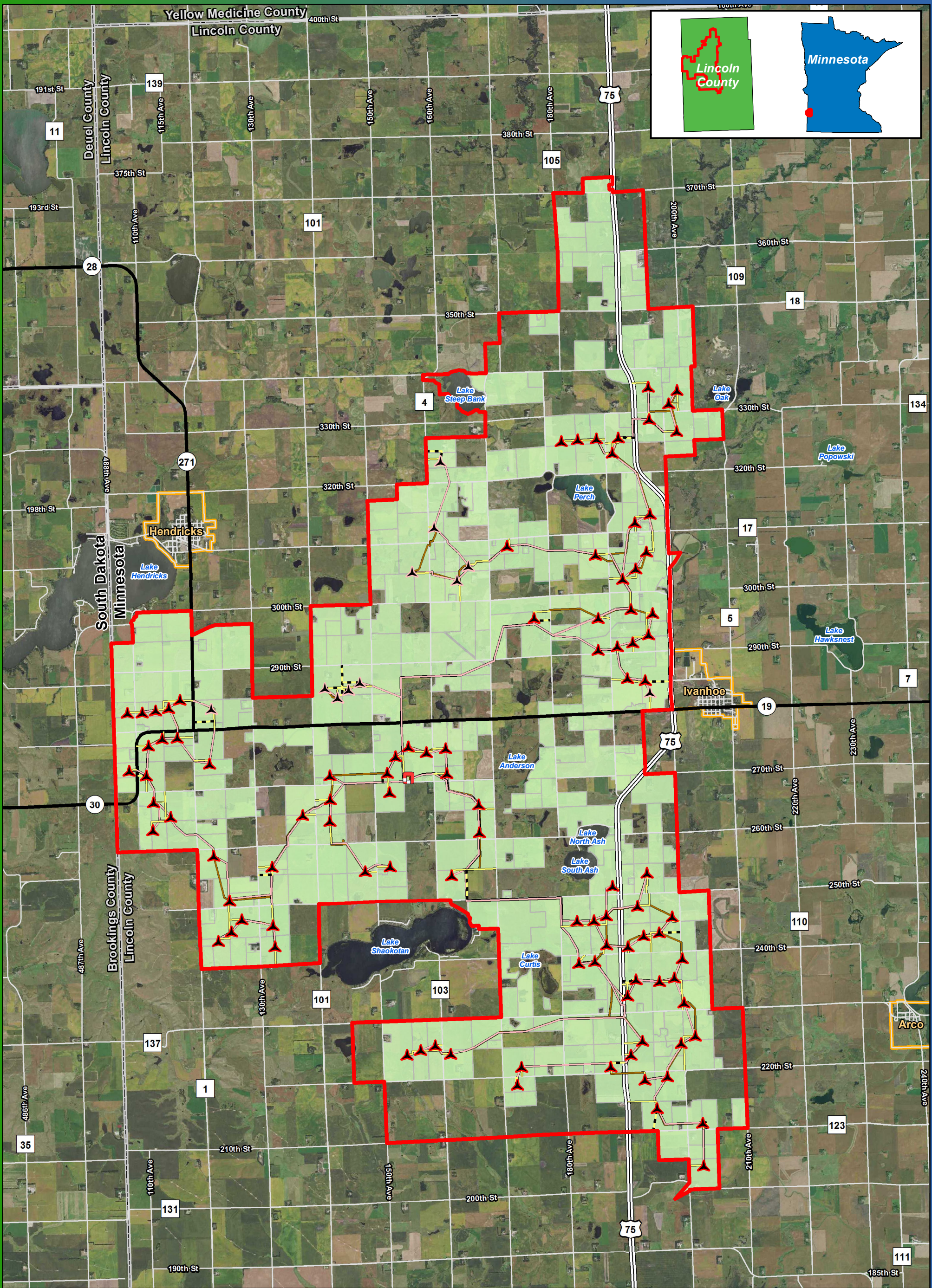
**Blazing Star Wind Farm 2
Lincoln County, MN**

44.460125, -96.336861

- | | | |
|--|------------------------------|----------------------------|
| | Preliminary Turbine Location | Site Control Status |
| | Alternate Turbine Location | Non-Participants |
| | Project Area Boundary | Participants |
| | Project Substation | |
| | Access Road | |
| | Alternate Access Road | |
| | Collection Line | |
| | Crane Path | |



Imagery Source: 2015 Color FSA
Data Source: Geronimo Energy, MN DNR, Census, Lincoln Co.

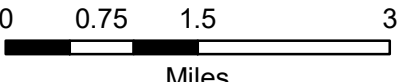


**Figure 5d
Land Ownership
Vestas V110**

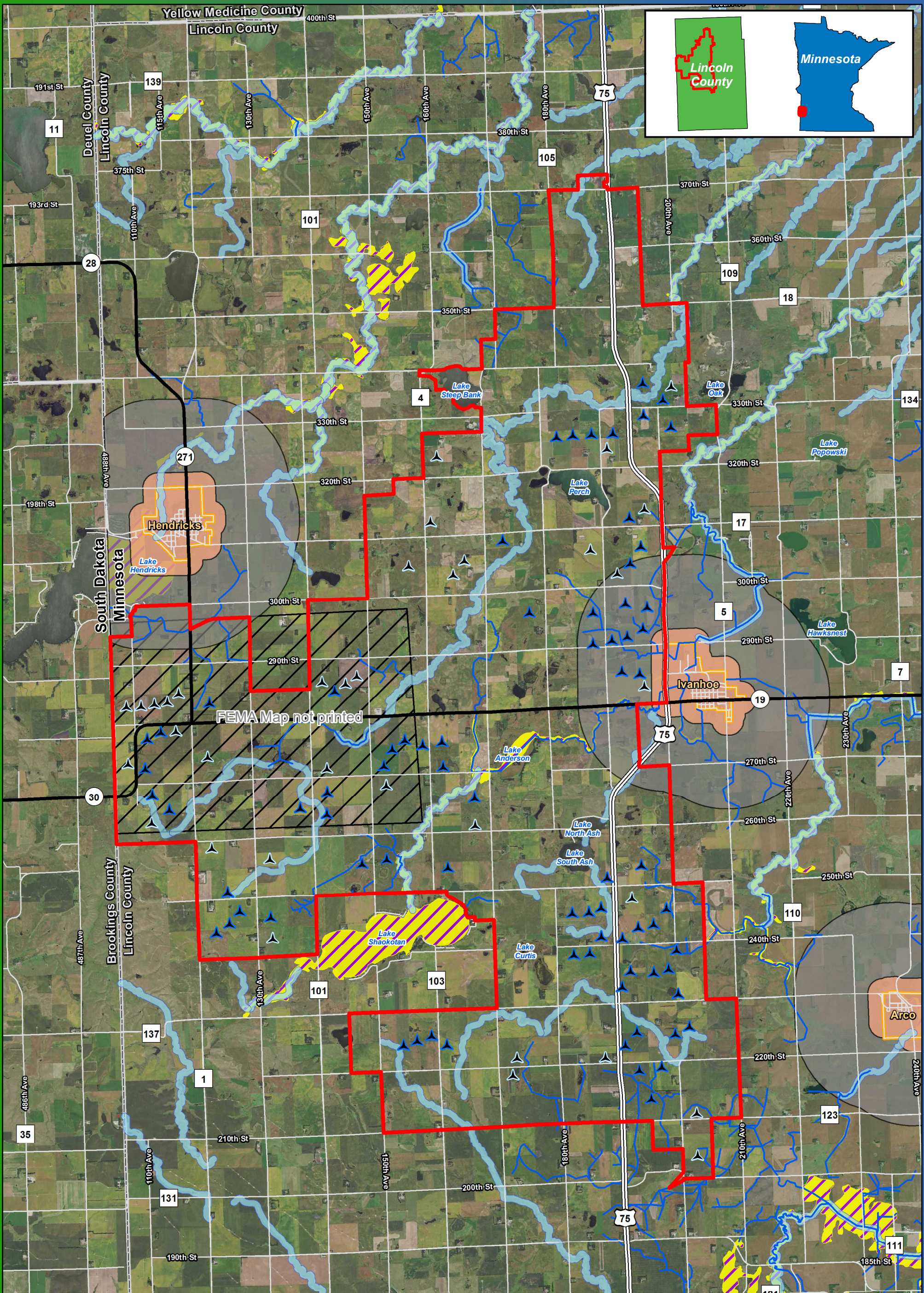
**Blazing Star Wind Farm 2
Lincoln County, MN**

44.460125, -96.336861

	Preliminary Turbine Location		Site Control Status
	Alternate Turbine Location		Non-Participants
	Project Area Boundary		Participants
	Project Substation		
	Access Road		
	Alternate Access Road		
	Collection Line		
	Crane Path		



Imagery Source: 2015 Color FSA
Data Source: Geronimo Energy, MN DNR, Census, Lincoln Co.



BLAZING STAR 2
WIND FARM
Lincoln County, MN

0 0.75 1.5 3
Miles

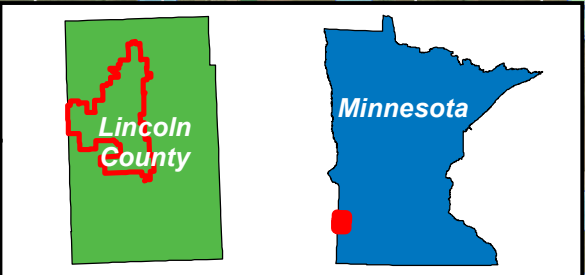
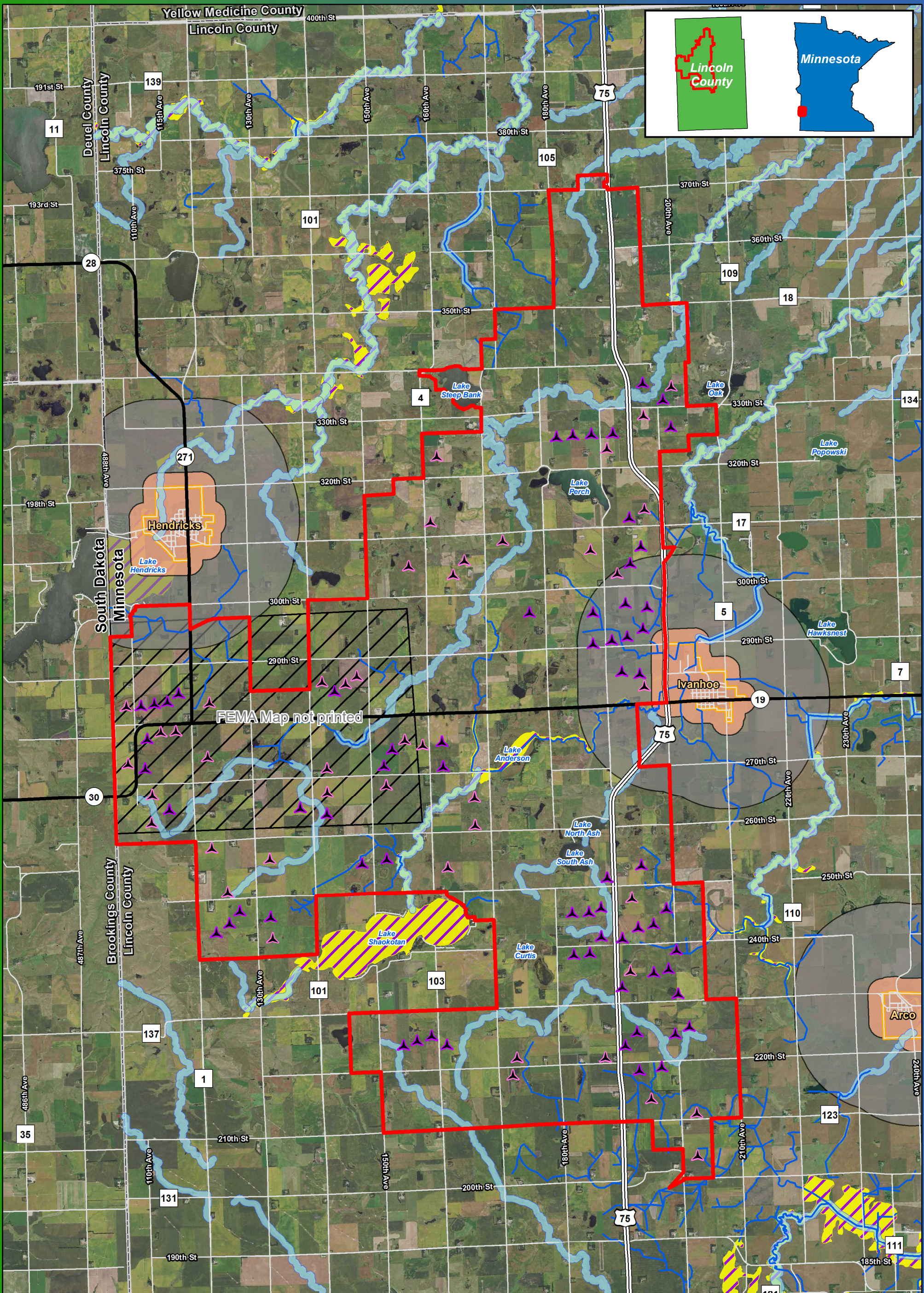
Imagery Source: 2015 Color FSA
Data Source: Geronimo Energy, MN DNR, Census, Lincoln Co.

Figure 6a
Zoning Map
Gamesa G126

Blazing Star Wind Farm 2
Lincoln County, MN

44.460125, -96.336861

- Preliminary Turbine Location
- Alternate Turbine Location
- Project Area Boundary
- County and Judicial Ditch
- Shoreland Management District
- Urban Expansion District
- Business and Industry District
- 100 Year Floodplain
- FEMA Map Not Printed



**BLAZING STAR 2
WIND FARM**
Lincoln County, MN

0 0.75 1.5 3
Miles

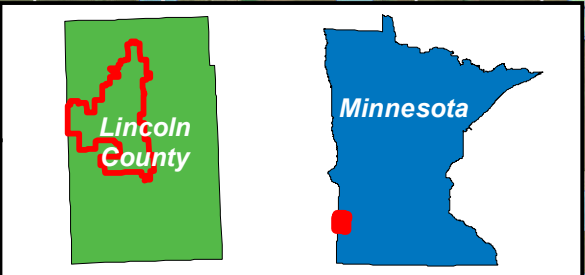
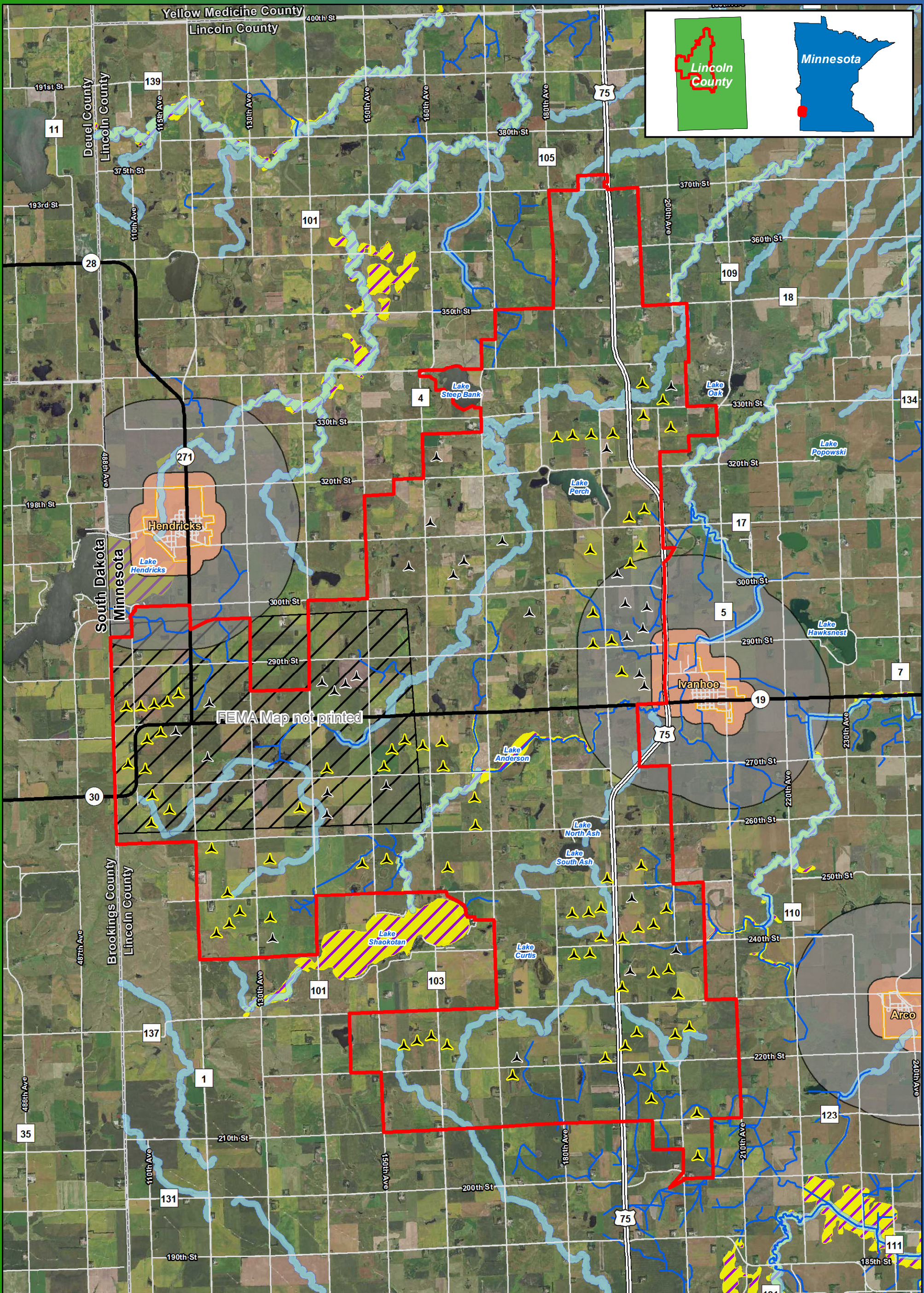
Imagery Source: 2015 Color FSA
Data Source: Geronimo Energy, MN DNR, Census, Lincoln Co.

**Figure 6b
Zoning Map
Acciona 3.0-132**

**Blazing Star Wind Farm 2
Lincoln County, MN**

44.460125, -96.336861

- Preliminary Turbine Location
- Alternate Turbine Location
- Project Area Boundary
- County and Judicial Ditch
- Shoreland Management District
- Urban Expansion District
- Business and Industry District
- 100 Year Floodplain
- FEMA Map Not Printed



BLAZING STAR 2
WIND FARM
Lincoln County, MN

Miles

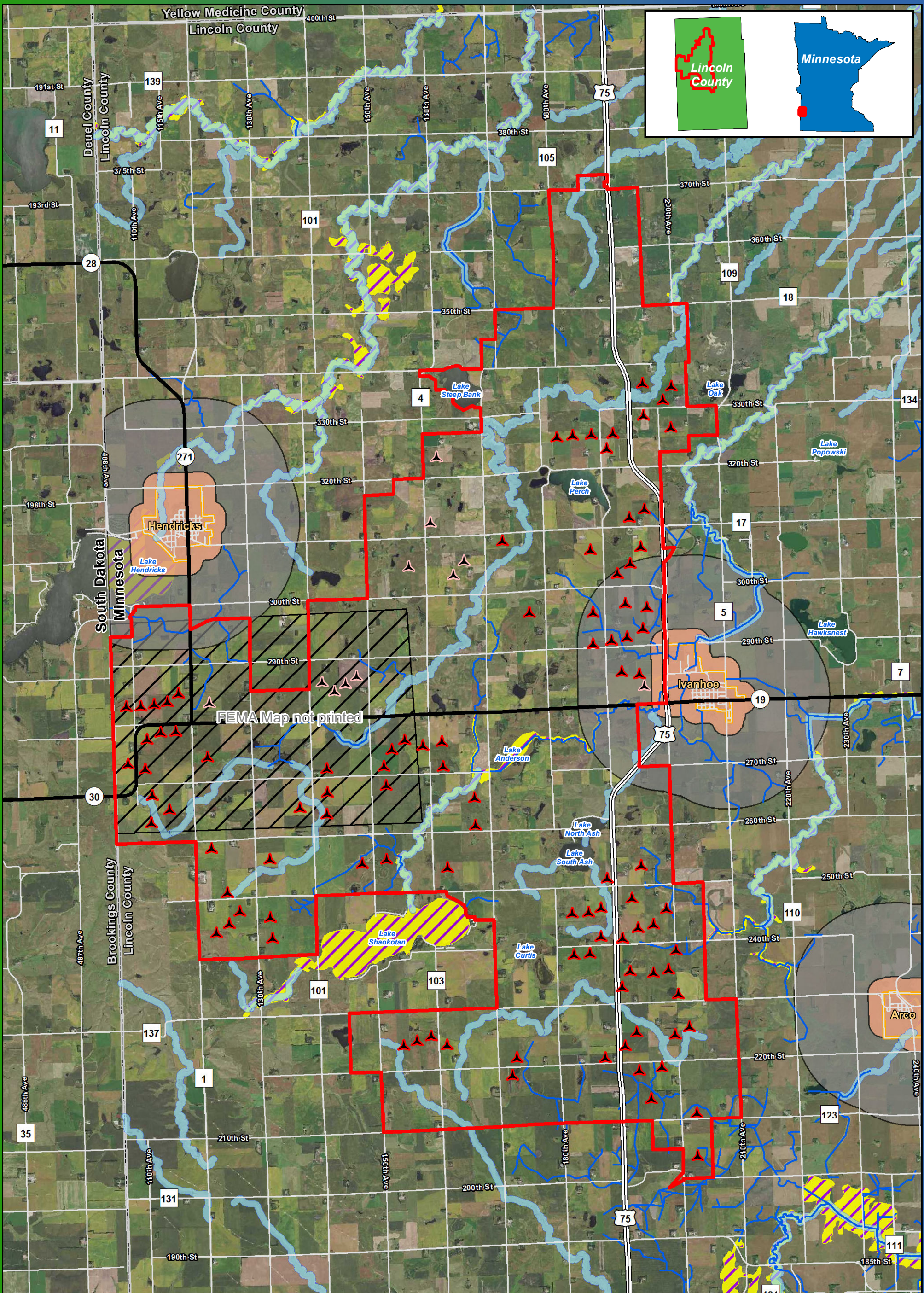
Imagery Source: 2015 Color FSA
Data Source: Geronimo Energy, MN DNR, Census, Lincoln Co.

Figure 6c
Zoning Map
GE 2.5-116

Blazing Star Wind Farm 2
Lincoln County, MN

44.460125, -96.336861

- Preliminary Turbine Location
- Alternate Turbine Location
- Project Area Boundary
- County and Judicial Ditch
- Shoreland Management District
- Urban Expansion District
- Business and Industry District
- 100 Year Floodplain
- FEMA Map Not Printed

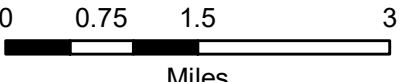


**Figure 6d
Zoning Map
Vestas V110**

**Blazing Star Wind Farm 2
Lincoln County, MN**

44.460125, -96.336861

- Preliminary Turbine Location
- Alternate Turbine Location
- Project Area Boundary
- County and Judicial Ditch
- Shoreland Management District
- Urban Expansion District
- Business and Industry District
- 100 Year Floodplain
- FEMA Map Not Printed



Imagery Source: 2015 Color FSA
Data Source: Geronimo Energy, MN DNR, Census, Lincoln Co.

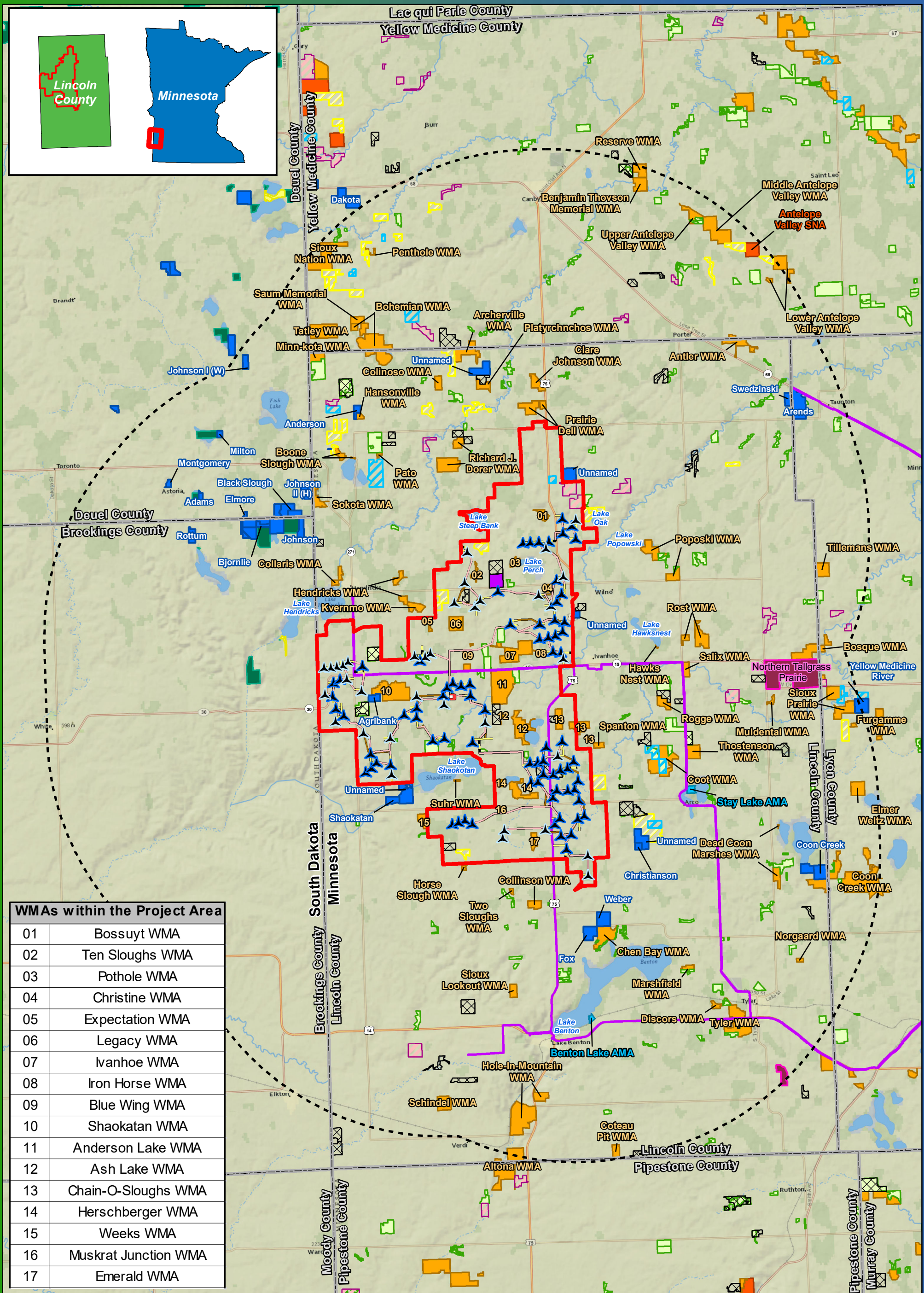


Figure 7a
Public Land Ownership
and Recreation
Gamesa G126

Blazing Star Wind Farm 2
Lincoln County, MN
44.460125, -96.336861

0 1.5 3 6
Miles

Imagery Source: National Geographic World Map
 Data Source: Geronimo Energy, MN DNR, USFWS, SD GFP

- Preliminary Turbine Location
- Alternate Turbine Location
- 10 Mile Buffer
- Project Area Boundary
- Project Substation
- Access Road
- Alternate Access Road
- Collection Line
- Crane Path
- Snowmobile Trail
- SD Park and Recreation
- Game Production Area
- Reinvest in Minnesota (RIM)
- Pheasant Forever Easement
- Wildlife Management Area (WMA)
- Scientific & Natural Area (SNA)
- Aquatic Management Area (AMA)
- Minnesota Walk-In Hunting Access Sites
- Federal Interest
- National Wildlife Refuge
- NWR Easement
- Waterfowl Production Area
- Grassland Easement
- Wetland Easement

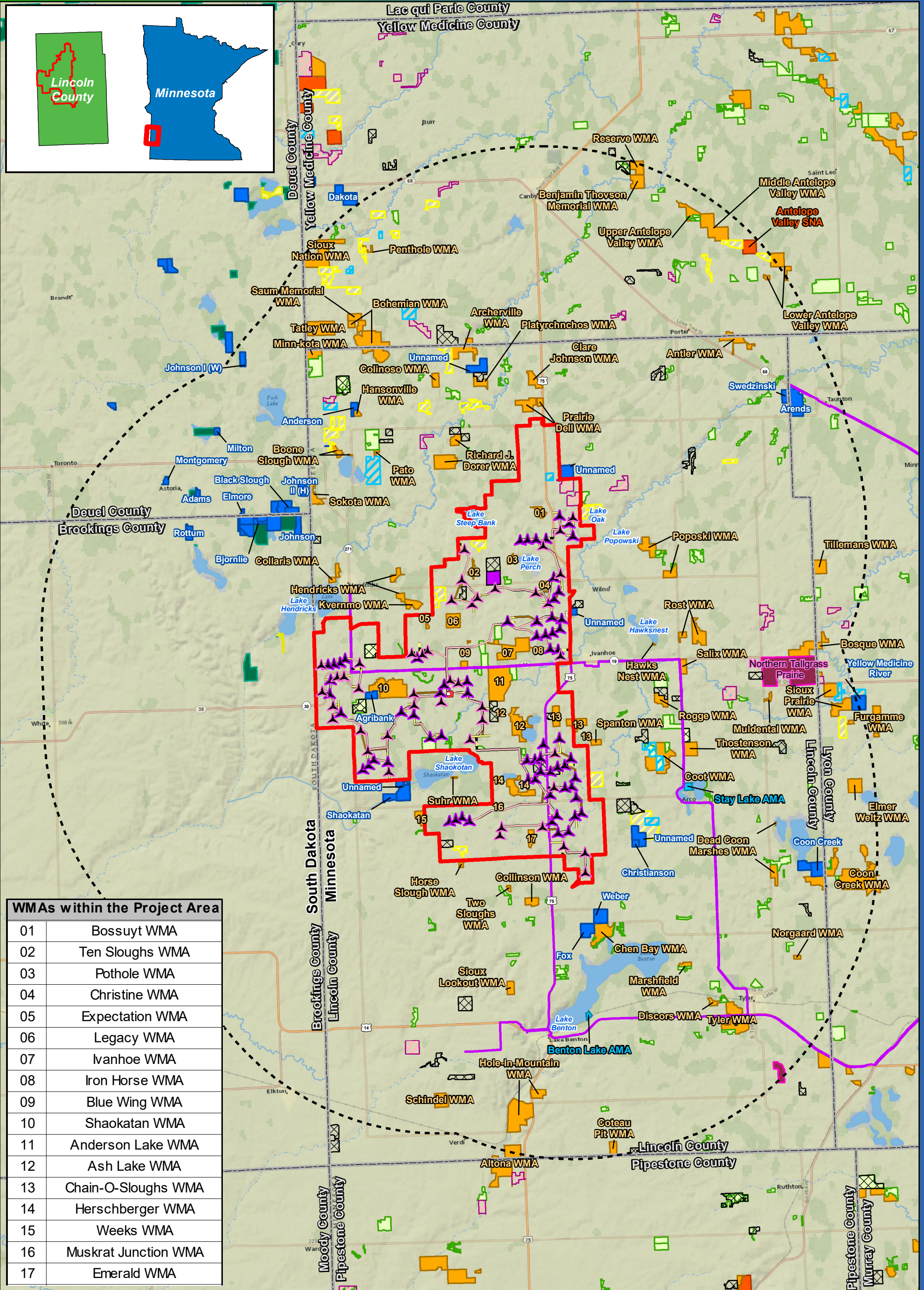


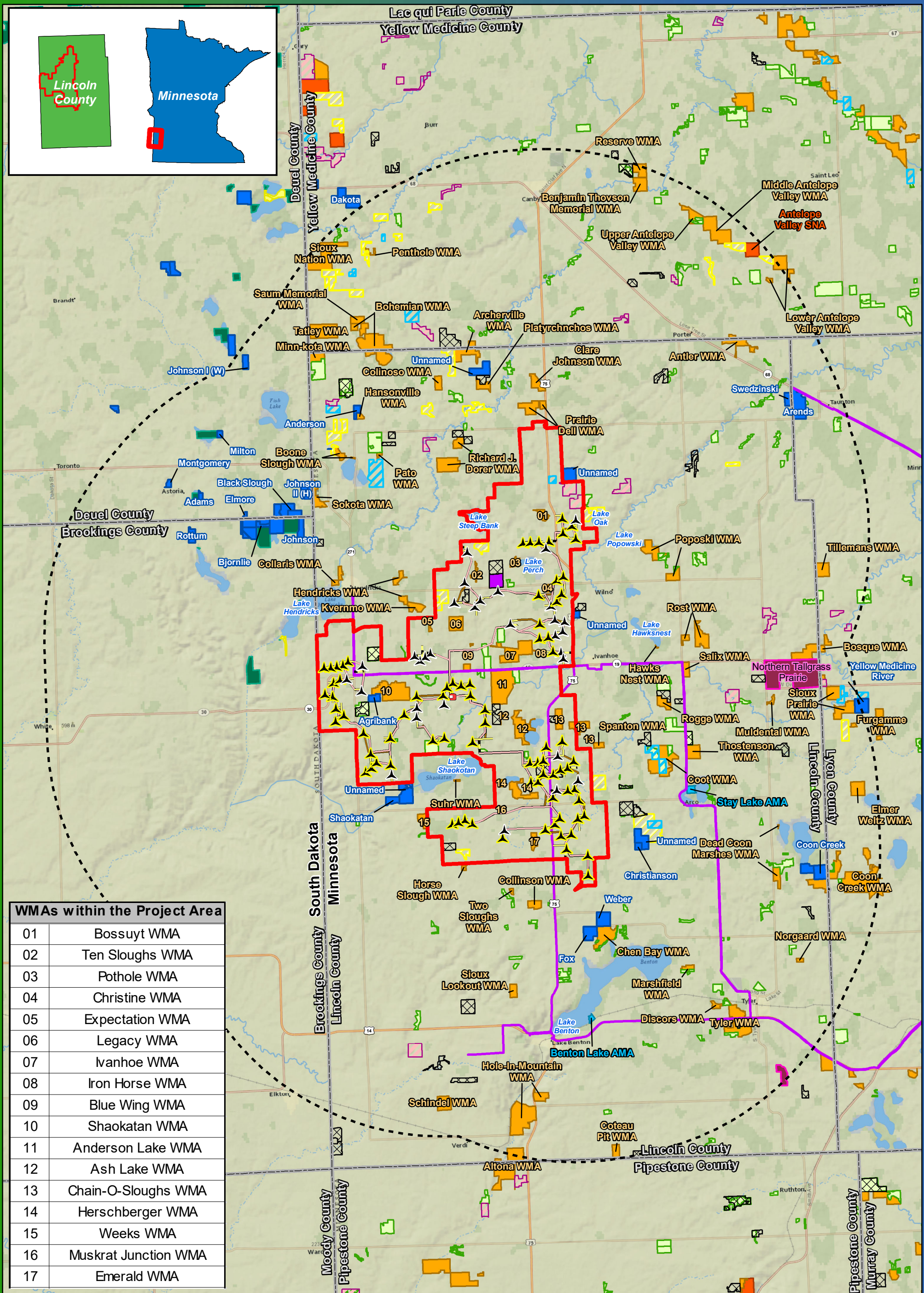
Figure 7b
Public Land Ownership
and Recreation
Acciona 3.0-132

Blazing Star Wind Farm 2
Lincoln County, MN
44.460125, -96.336861

- Preliminary Turbine Location
- Alternate Turbine Location
- 10 Mile Buffer
- Project Area Boundary
- Project Substation
- Access Road
- Alternate Access Road
- Collection Line
- Crane Path
- Snowmobile Trail
- SD Park and Recreation
- Game Production Area
- Reinvest in Minnesota (RIM)
- Pheasant Forever Easement
- Wildlife Management Area (WMA)
- Scientific & Natural Area (SNA)
- Aquatic Management Area (AMA)
- Minnesota Walk-In Hunting Access Sites
- National Wildlife Refuge
- NWR Easement
- Waterfowl Production Area
- Grassland Easement
- Wetland Easement



Imagery Source: National Geographic World Map
 Data Source: Geronimo Energy, MN DNR, USFWS, SD GFP



WMAs within the Project Area	
01	Bossuyt WMA
02	Ten Sloughs WMA
03	Pothole WMA
04	Christine WMA
05	Expectation WMA
06	Legacy WMA
07	Ivanhoe WMA
08	Iron Horse WMA
09	Blue Wing WMA
10	Shaokatan WMA
11	Anderson Lake WMA
12	Ash Lake WMA
13	Chain-O-Sloughs WMA
14	Herschberger WMA
15	Weeks WMA
16	Muskrat Junction WMA
17	Emerald WMA

BLAZING STAR 2 WIND FARM
Lincoln County, MN

Imagery Source: National Geographic World Map
Data Source: Geronimo Energy, MN DNR, USFWS, SD GFP

**Figure 7c
Public Land Ownership
and Recreation
GE 2.5-116**

**Blazing Star Wind Farm 2
Lincoln County, MN
44.460125, -96.336861**

Preliminary Turbine Location	Snowmobile Trail	Aquatic Management Area (AMA)
Alternate Turbine Location	SD Park and Recreation	Minnesota Walk-In Hunting Access Sites
10 Mile Buffer	Game Production Area	National Wildlife Refuge
Project Area Boundary	Reinvest in Minnesota (RIM)	NWR Easement
Project Substation	Pheasant Forever Easement	Waterfowl Production Area
Access Road	Wildlife Management Area (WMA)	Grassland Easement
Alternate Access Road	Scientific & Natural Area (SNA)	Wetland Easement
Collection Line		
Crane Path		

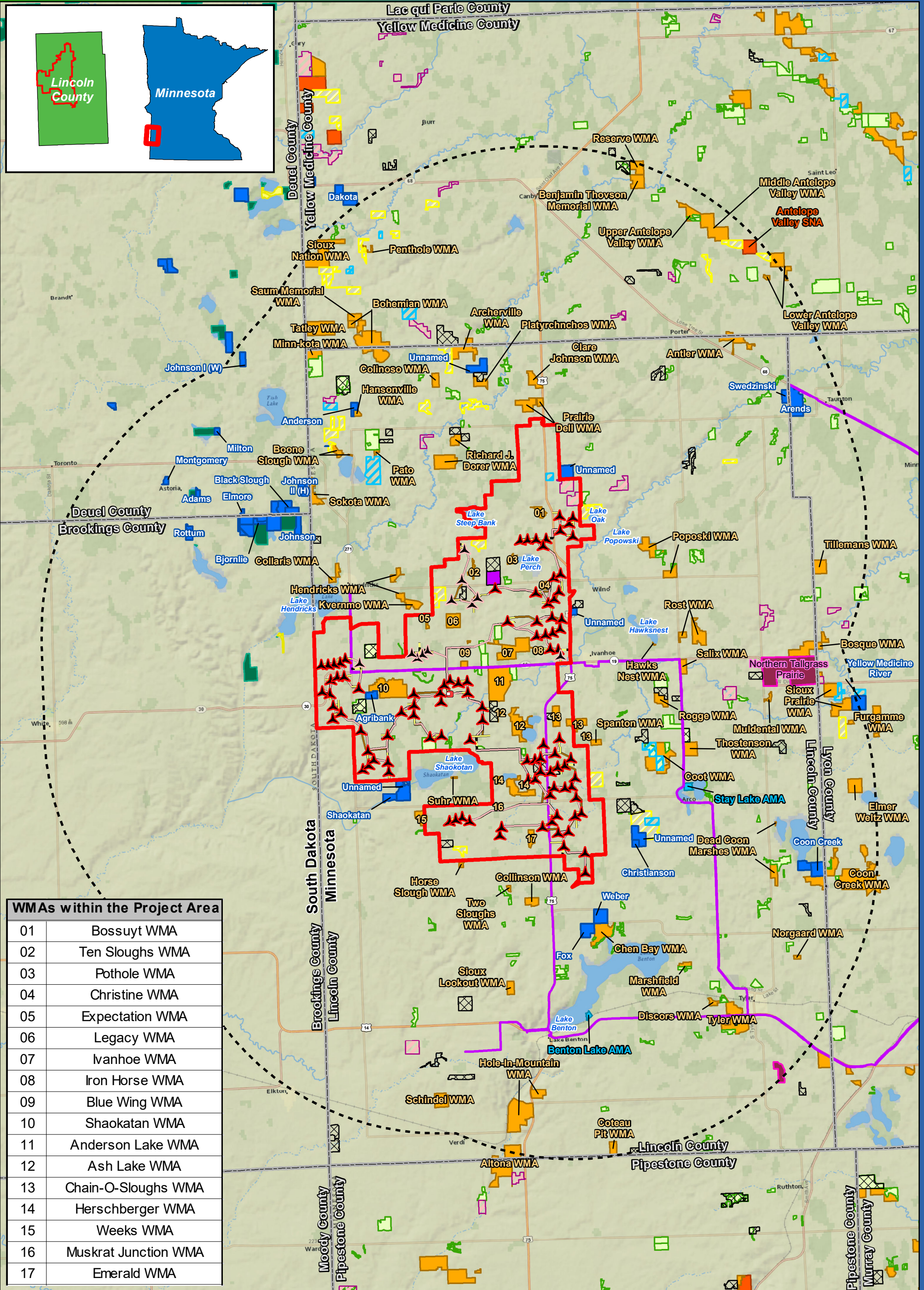


Figure 7d
Public Land Ownership
and Recreation
Vestas V110
Blazing Star Wind Farm 2
Lincoln County, MN
44.460125, -96.336861

BLAZING STAR 2
WIND FARM
 Lincoln County, MN

0 1.5 3 6
 Miles

Preliminary Turbine Location	Snowmobile Trail	Aquatic Management Area (AMA)
Alternate Turbine Location	SD Park and Recreation	Minnesota Walk-In Hunting Access Sites
10 Mile Buffer	Game Production Area	National Wildlife Refuge
Project Area Boundary	Reinvest in Minnesota (RIM)	NWR Easement
Project Substation	Pheasant Forever Easement	Waterfowl Production Area
Access Road	Wildlife Management Area (WMA)	Grassland Easement
Alternate Access Road	Scientific & Natural Area (SNA)	Wetland Easement
Collection Line		
Crane Path		

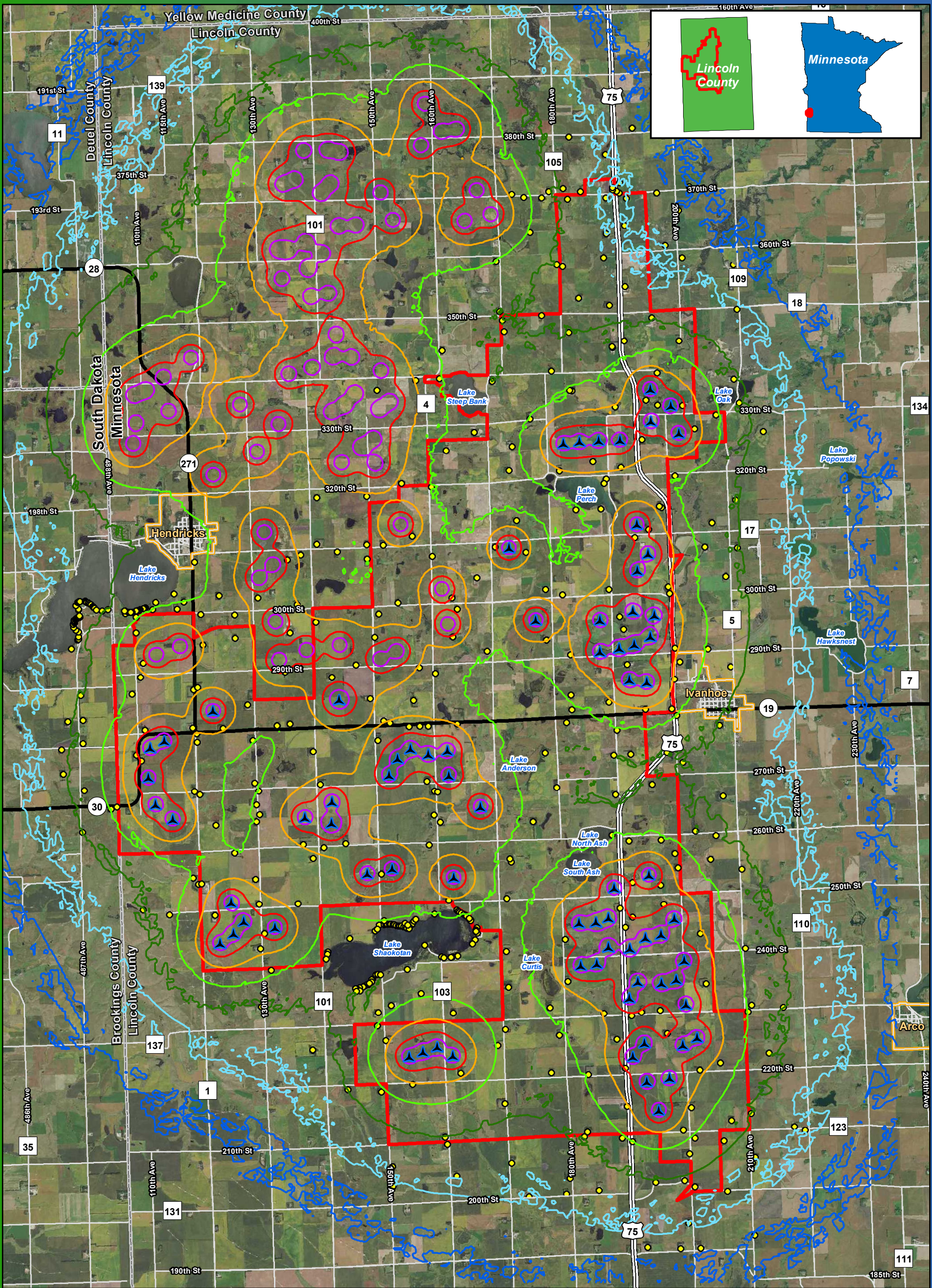
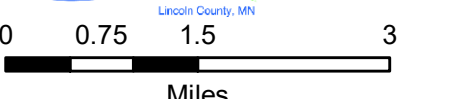


Figure 8a
Sound/Noise
Gamesa G126

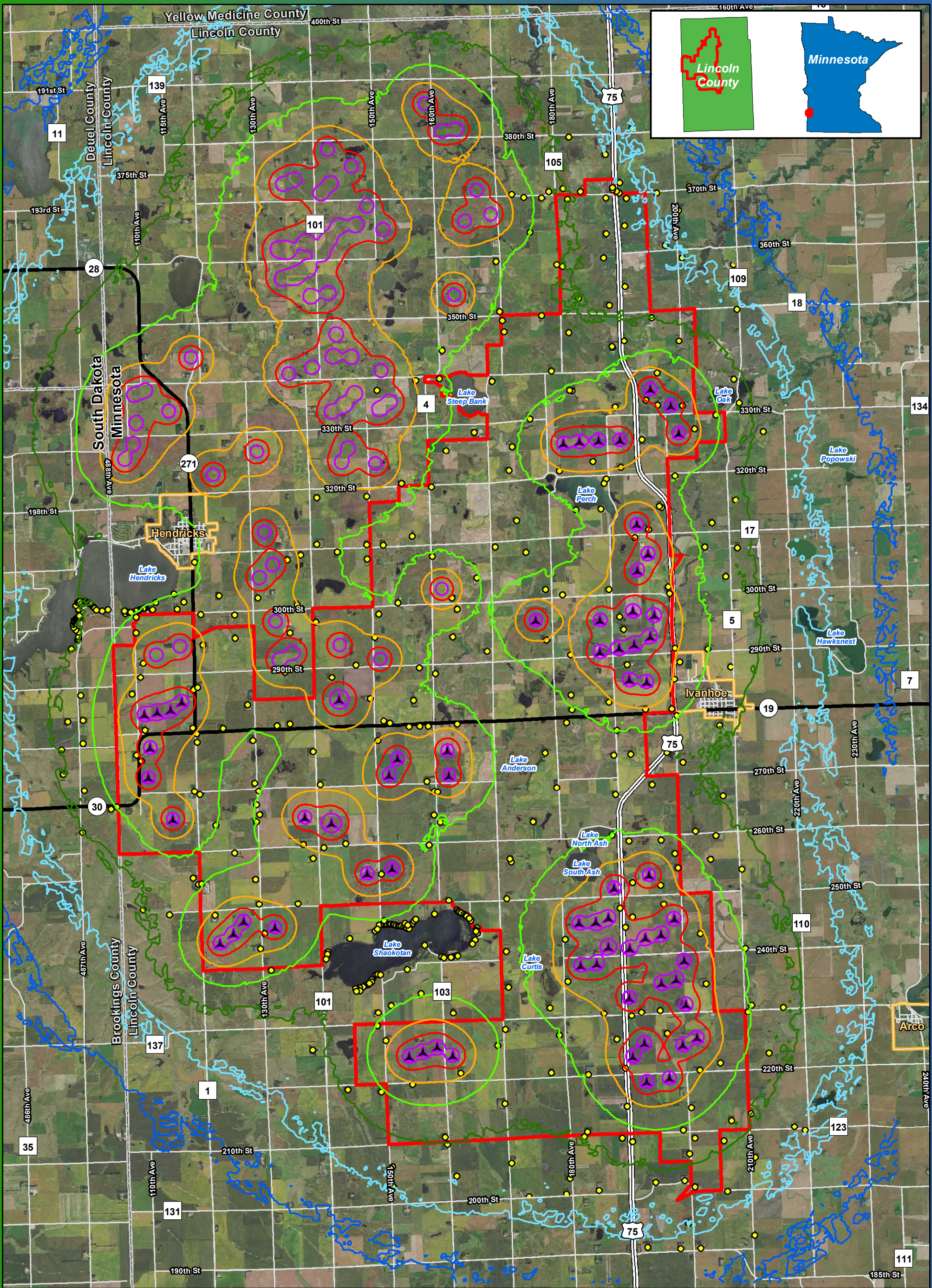
Blazing Star Wind Farm 2
Lincoln County, MN

44.460125, -96.336861

- | | |
|--|------------------------------|
| ▲ Preliminary Turbine Location | Sound Pressure Levels |
| ● Residential Structures within 1 Mile (excluding cities of Hendricks and Ivanhoe) | — 20 dBA |
| □ Project Area Boundary | — 25 dBA |
| | — 30 dBA |
| | — 35 dBA |
| | — 40 dBA |
| | — 45 dBA |
| | — 50 dBA |



Imagery Source: 2015 Color FSA
 Data Source: Geronimo Energy, MN DNR, Census, Lincoln Co.



BLAZING STAR 2
WIND FARM

Lincoln County, MN

0 0.75 1.5 3
Miles

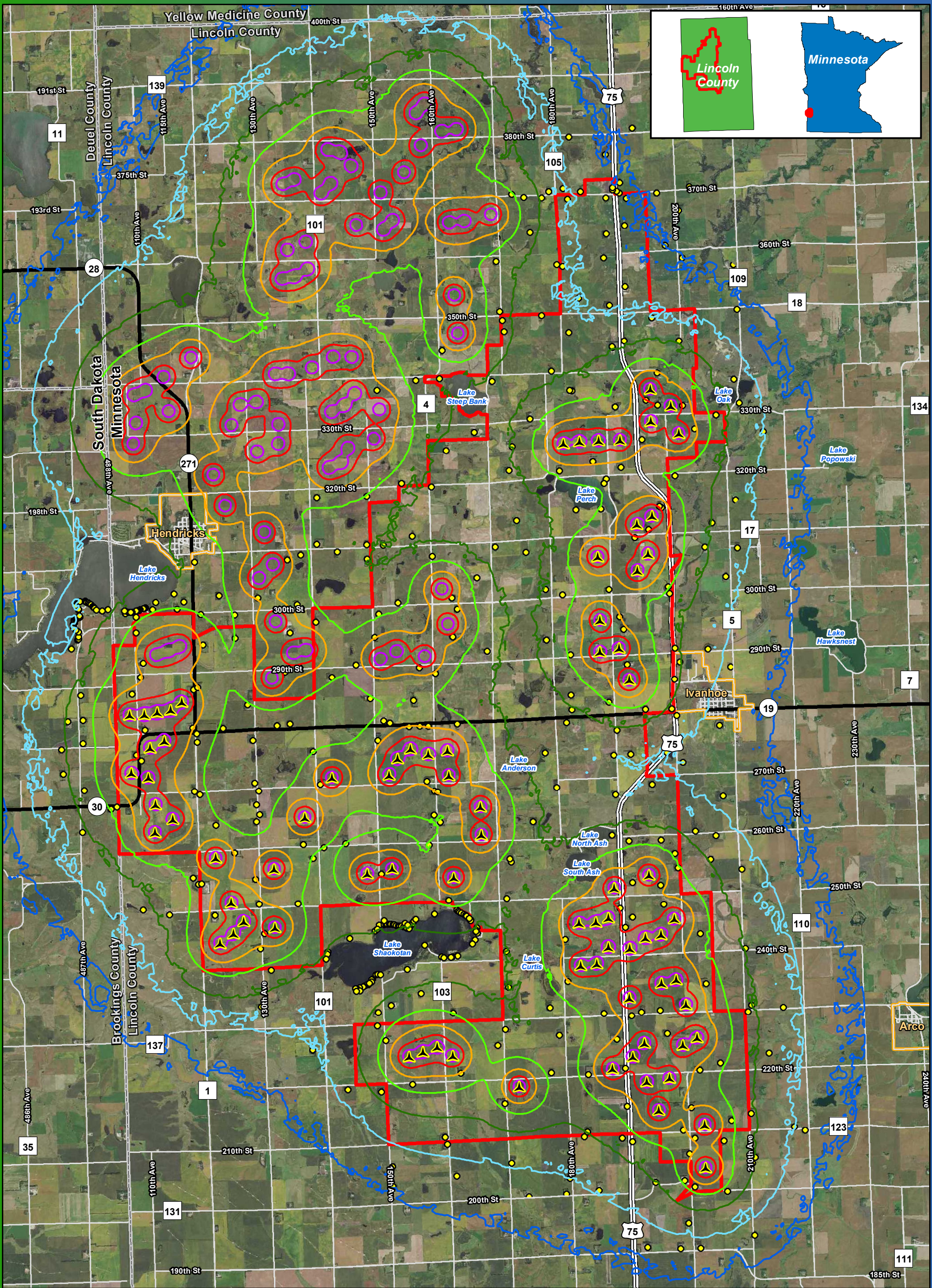
Imagery Source: 2015 Color FSA
Data Source: Geronimo Energy, MN DNR, Census, Lincoln Co.

Figure 8b
Sound/Noise
Acciona 3.0-132

Blazing Star Wind Farm 2
Lincoln County, MN

44.460125, -96.336861

<ul style="list-style-type: none"> Preliminary Turbine Location Residential Structures within 1 Mile (excluding cities of Hendricks and Ivanhoe) Project Area Boundary 	<p>Sound Pressure Levels</p> <ul style="list-style-type: none"> 20 dBA 25 dBA 30 dBA 35 dBA 40 dBA 45 dBA 50 dBA
--	---



**Figure 8c
Sound/Noise
GE 2.5-116**

**Blazing Star Wind Farm 2
Lincoln County, MN**

44.460125, -96.336861

▲ Preliminary Turbine Location	Sound Pressure Levels
● Residential Structures within 1 Mile (excluding cities of Hendricks and Ivanhoe)	— 20 dBA
□ Project Area Boundary	— 25 dBA
	— 30 dBA
	— 35 dBA
	— 40 dBA
	— 45 dBA
	— 50 dBA

Lincoln County, MN

Miles

Imagery Source: 2015 Color FSA
Data Source: Geronimo Energy, MN DNR, Census, Lincoln Co.

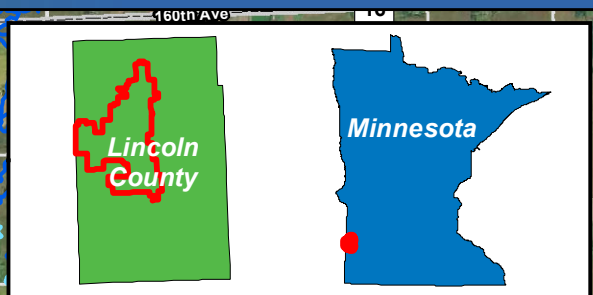
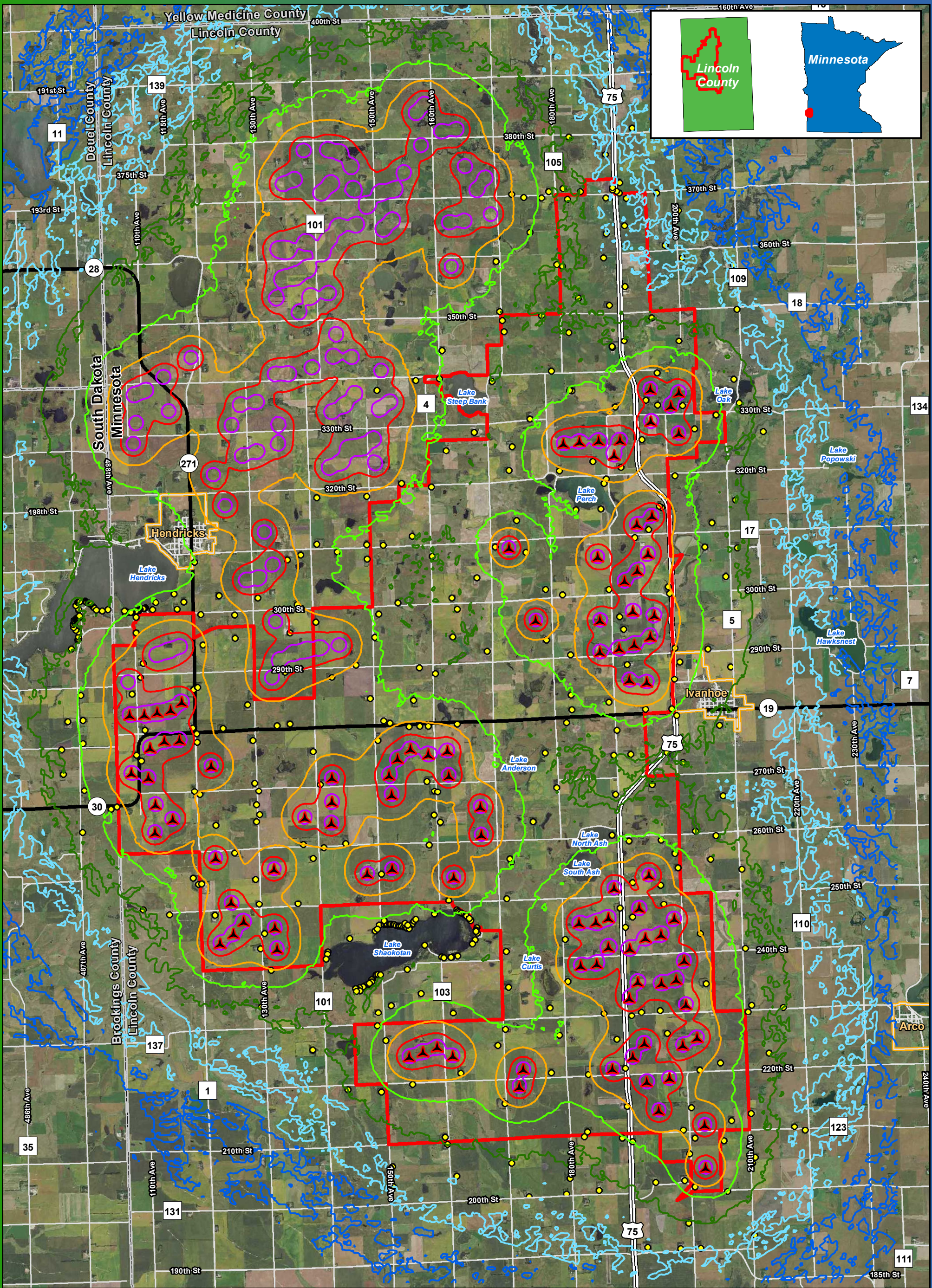
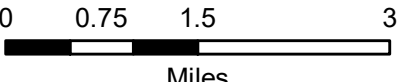


Figure 8d
Sound/Noise
Vestas V110

Blazing Star Wind Farm 2
Lincoln County, MN

44.460125, -96.336861

- | | | | |
|--|--|--|--------|
| | Preliminary Turbine Location | | 20 dBA |
| | Residential Structures within 1 Mile
(excluding cities of Hendricks and
Ivanhoe) | | 25 dBA |
| | Project Area Boundary | | 30 dBA |
| | | | 35 dBA |
| | | | 40 dBA |
| | | | 45 dBA |
| | | | 50 dBA |



Imagery Source: 2015 Color FSA
 Data Source: Geronimo Energy, MN DNR, Census, Lincoln Co.

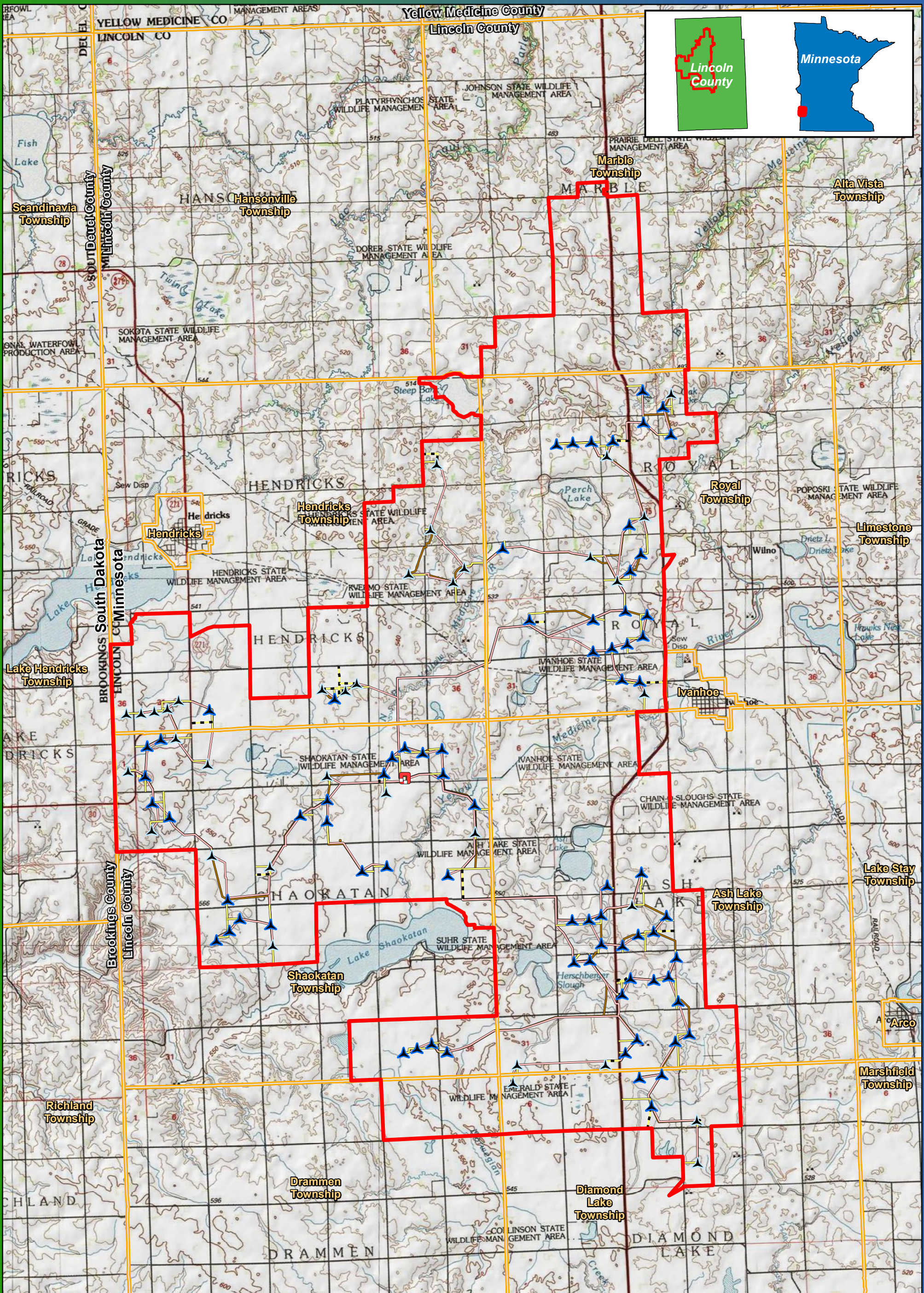
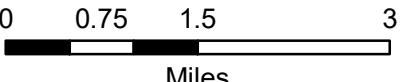


Figure 9a
Topographic Map
Gamesa G126

Blazing Star Wind Farm 2
Lincoln County, MN

44.460125, -96.336861

- Preliminary Turbine Location
- Alternate Turbine Location
- Project Area Boundary
- County Boundary
- City/Township
- Project Substation
- Access Road
- Alternate Access Road
- Collection Line
- Crane Path



Service Layer Credits: Copyright © 2013 National Geographic Society, i-cubed
 Data Source: Geronimo Energy, USGS, Census