

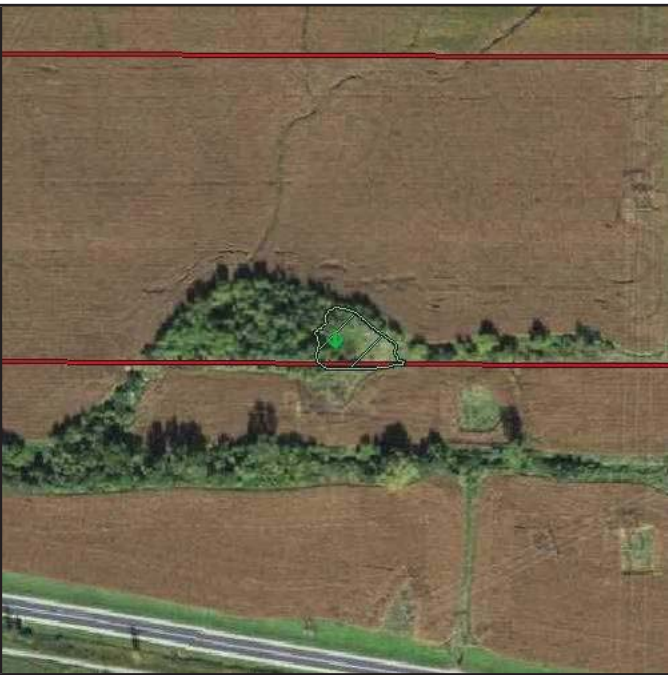
WB-11



**Attributes**

Feature ID	WB-11
Circular 39	Type 6
Cowardin	PSS1B

WB-11



**Attributes**

Feature ID	WB-11
Circular 39	Type 6
Cowardin	PSS1B

NW-01



**Attributes**

Feature ID	NW-01
Circular 39	Upland
Cowardin	Upland

NW-02



**Attributes**

Feature ID	NW-02
Circular 39	Upland
Cowardin	Upland

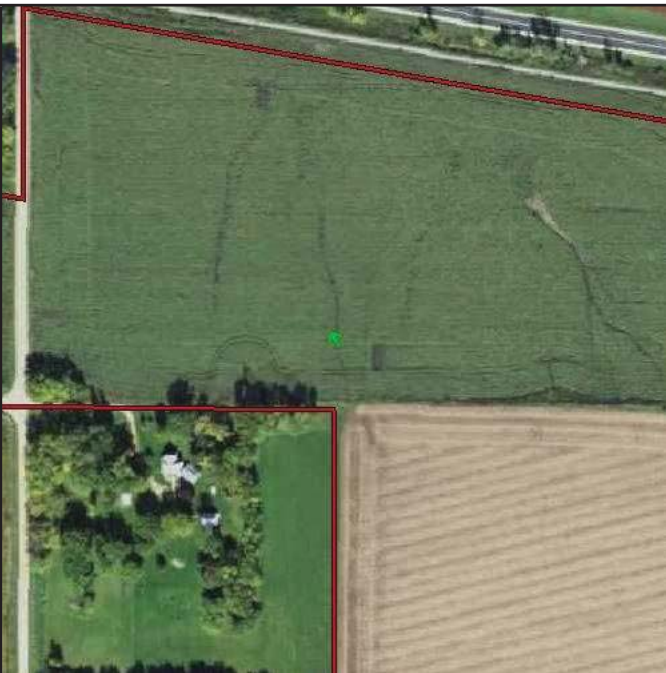
NW-03



**Attributes**

Feature ID	NW-03
Circular 39	Upland
Cowardin	Upland

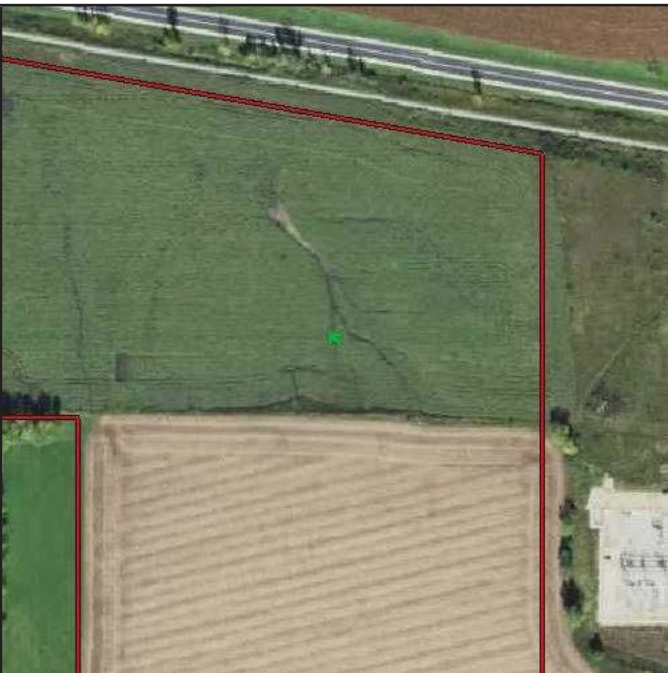
NW-04



**Attributes**

Feature ID	NW-04
Circular 39	Upland
Cowardin	Upland

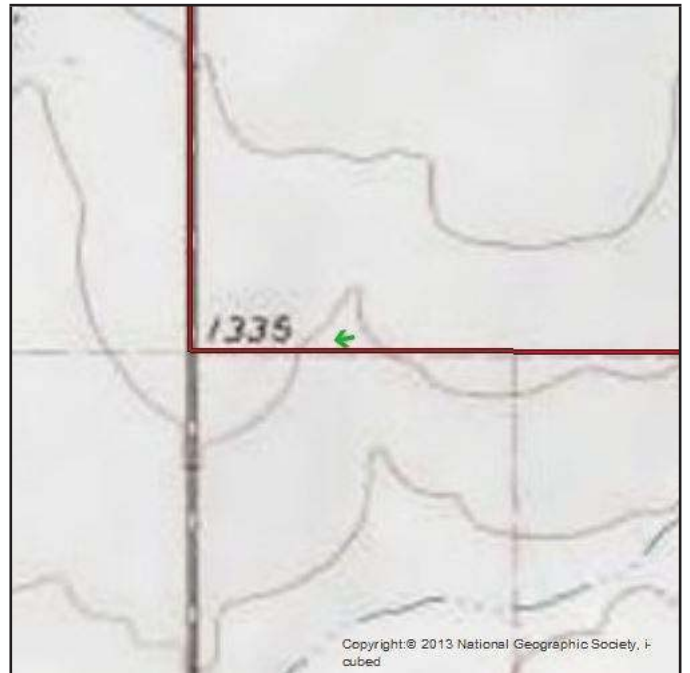
NW-05



**Attributes**

Feature ID	NW-05
Circular 39	Upland
Cowardin	Upland

NW-06

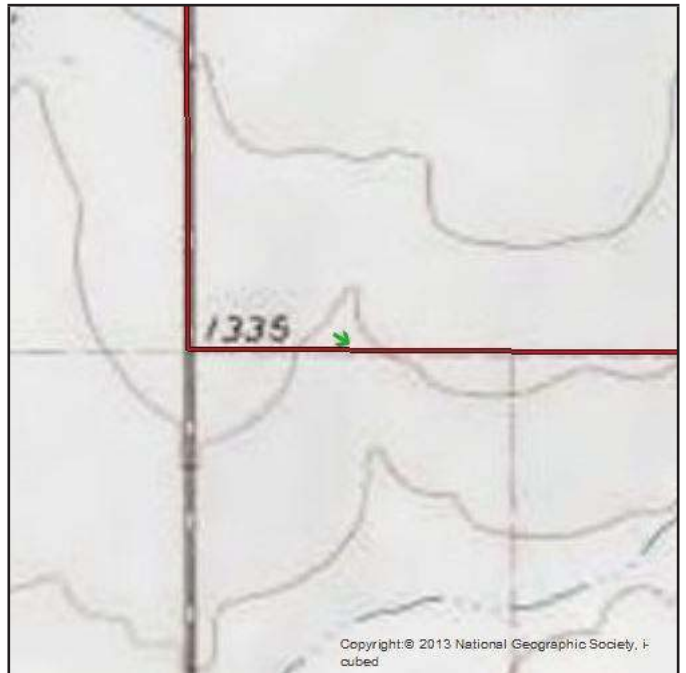
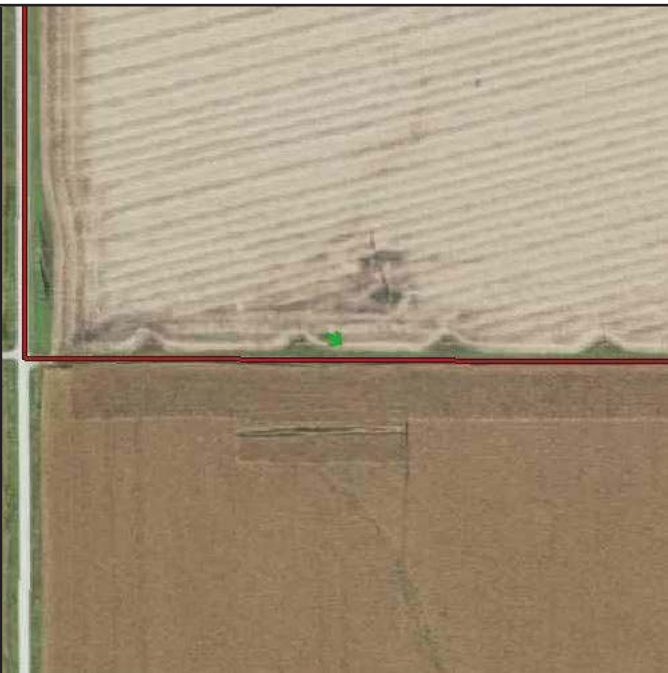


**Attributes**

Feature ID	NW-06
Circular 39	Upland
Cowardin	Upland

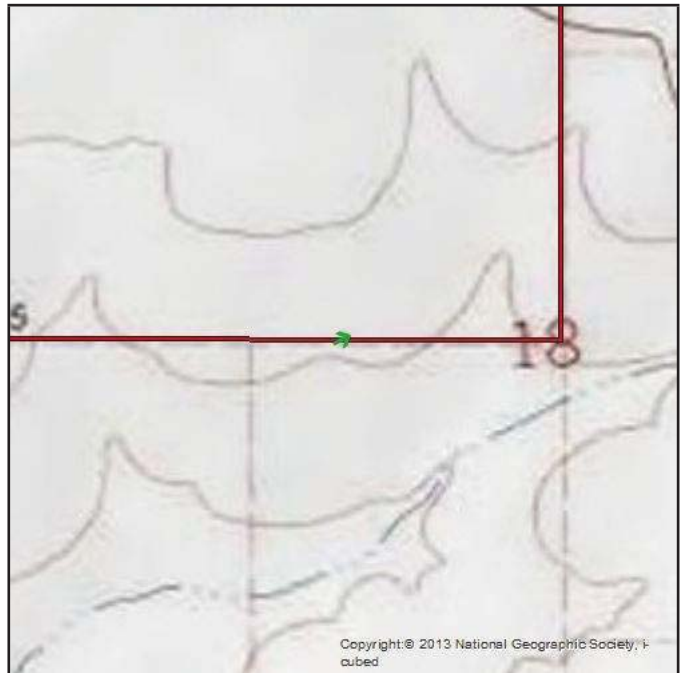


NW-06



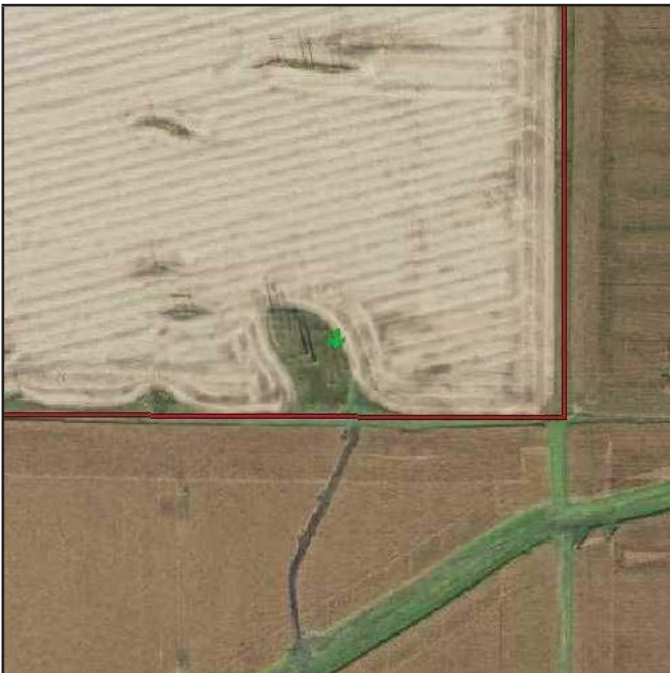
**Attributes**

Feature ID	NW-06
Circular 39	Upland
Cowardin	Upland



**Attributes**

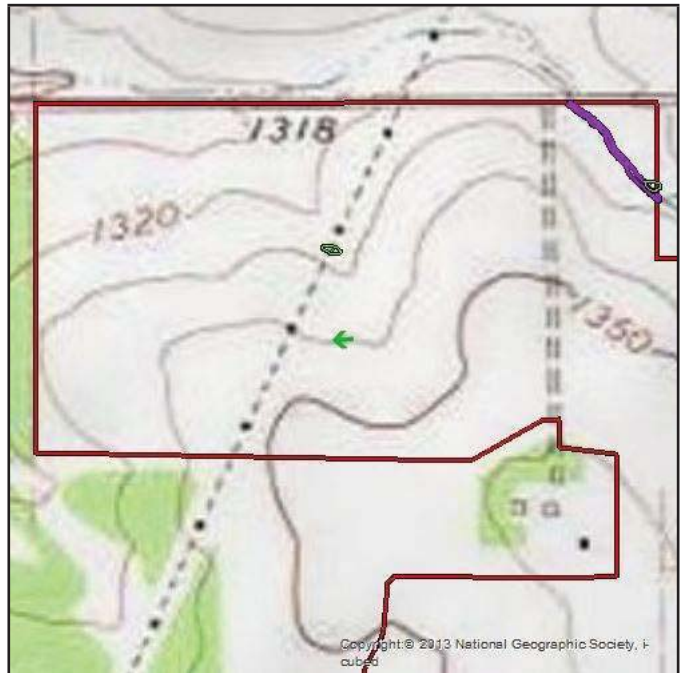
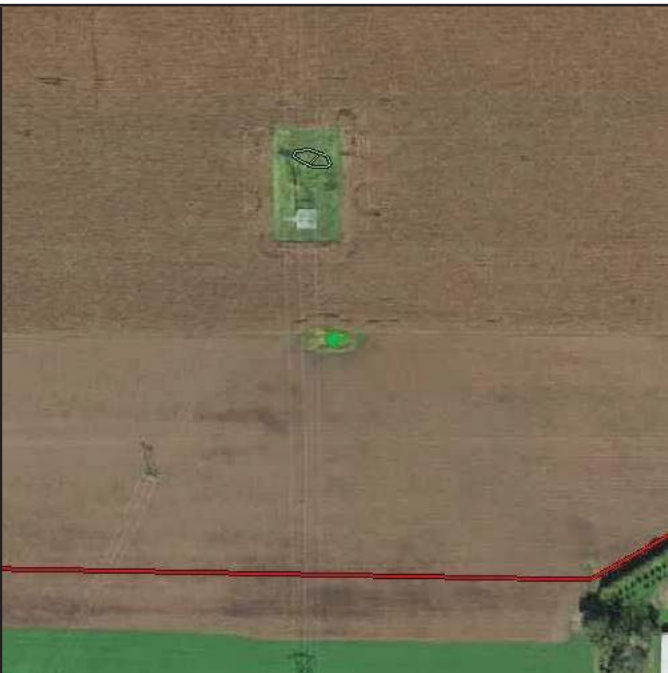
Feature ID	NW-07
Circular 39	Upland
Cowardin	Upland



**Attributes**

Feature ID	NW-08
Circular 39	Upland
Cowardin	Upland

NW-09



**Attributes**

Feature ID	NW-09
Circular 39	Upland
Cowardin	Upland

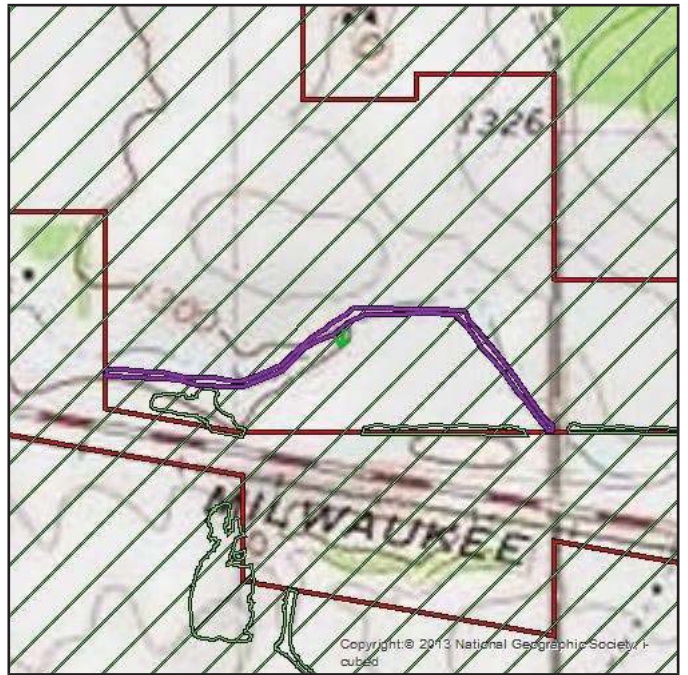
NW-10



**Attributes**

Feature ID	NW-10
Circular 39	Upland
Cowardin	Upland

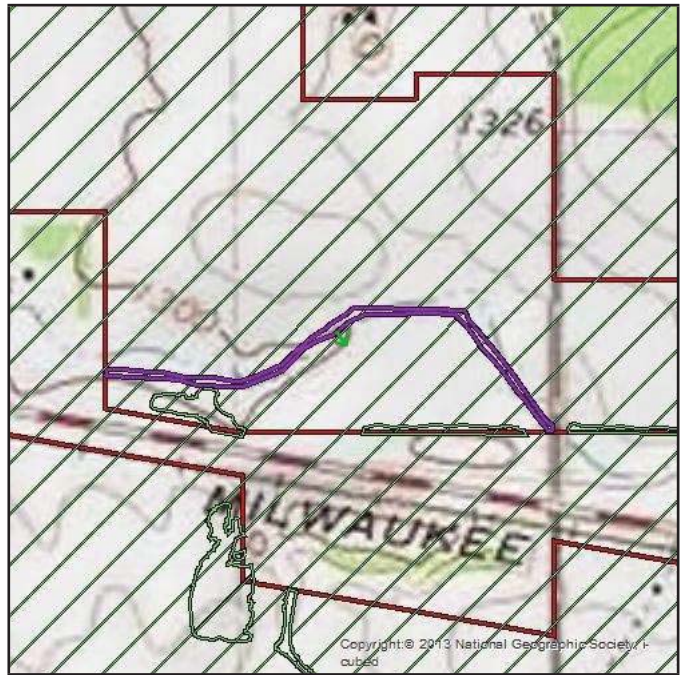
NW-11



**Attributes**

Feature ID	NW-11
Circular 39	Upland
Cowardin	Upland

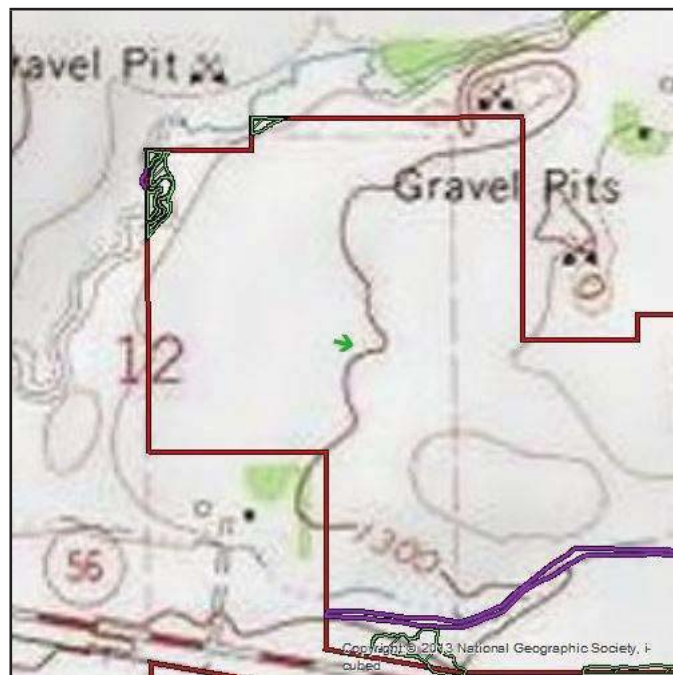
NW-11



**Attributes**

Feature ID	NW-11
Circular 39	Upland
Cowardin	Upland

NW-12

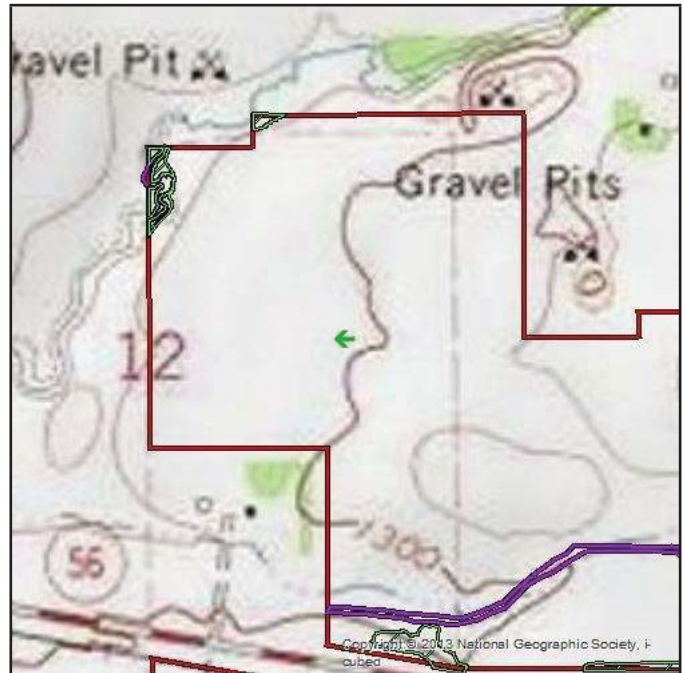


**Attributes**

Feature ID	NW-12
Circular 39	Upland
Cowardin	Upland



NW-12



**Attributes**

Feature ID	NW-12
Circular 39	Upland
Cowardin	Upland

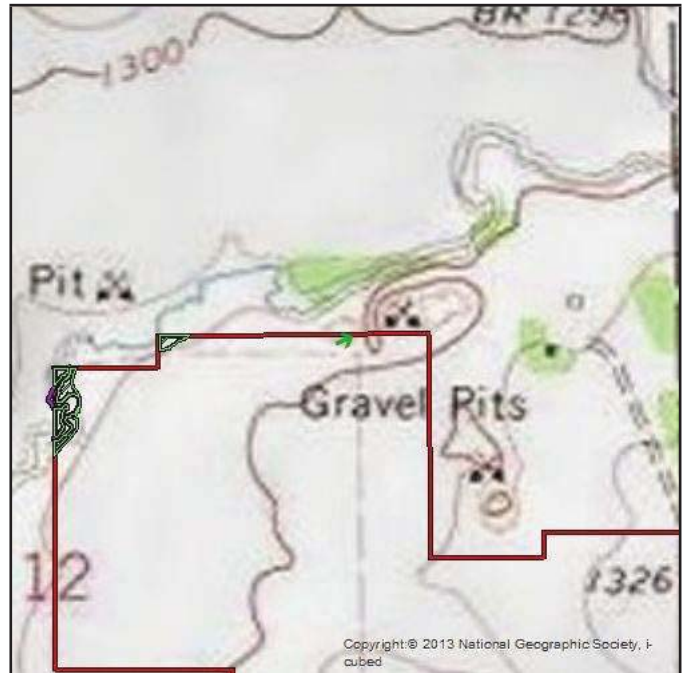
NW-13



**Attributes**

Feature ID	NW-13
Circular 39	Upland
Cowardin	Upland

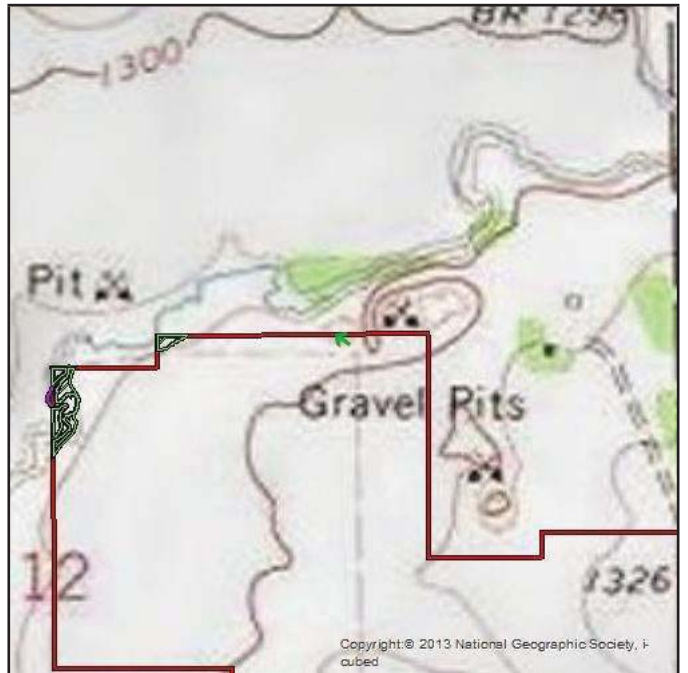
NW-14



**Attributes**

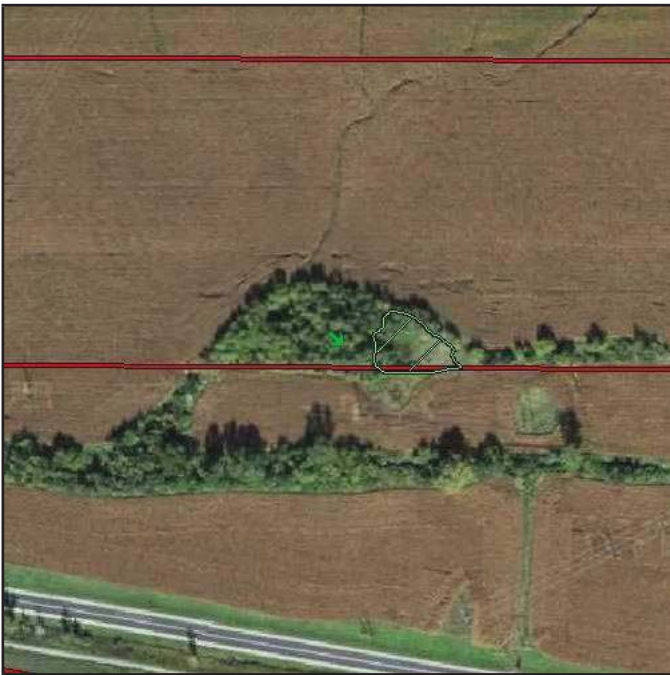
Feature ID	NW-14
Circular 39	Upland
Cowardin	Upland

NW-14



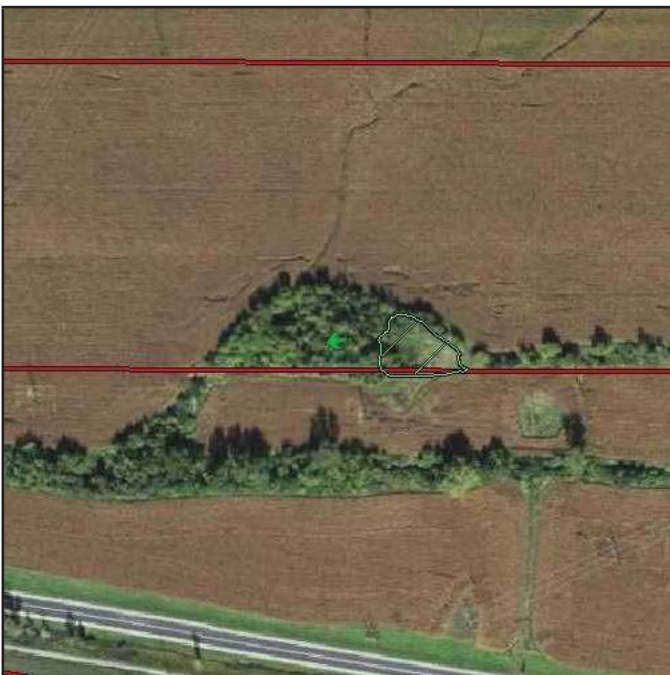
**Attributes**

Feature ID	NW-14
Circular 39	Upland
Cowardin	Upland



**Attributes**

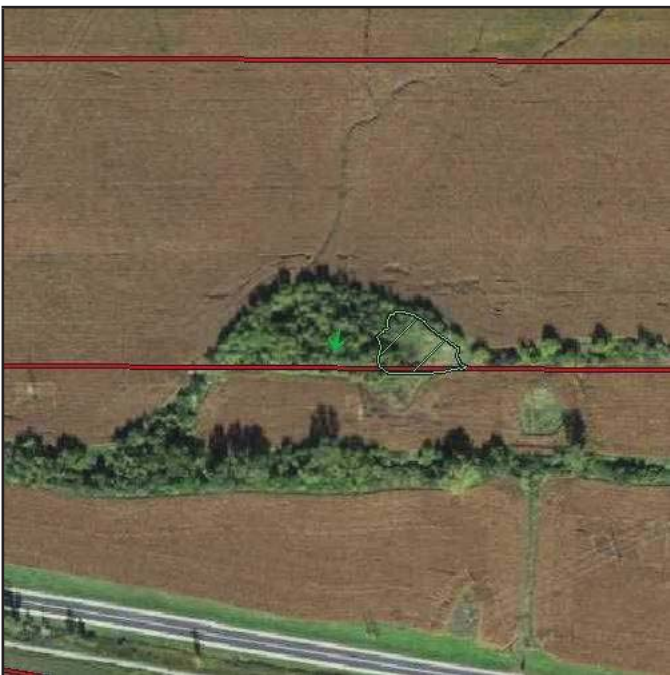
Feature ID	NW-15
Circular 39	Upland
Cowardin	Upland



Copyright © 2013 National Geographic Society, Inc.

**Attributes**

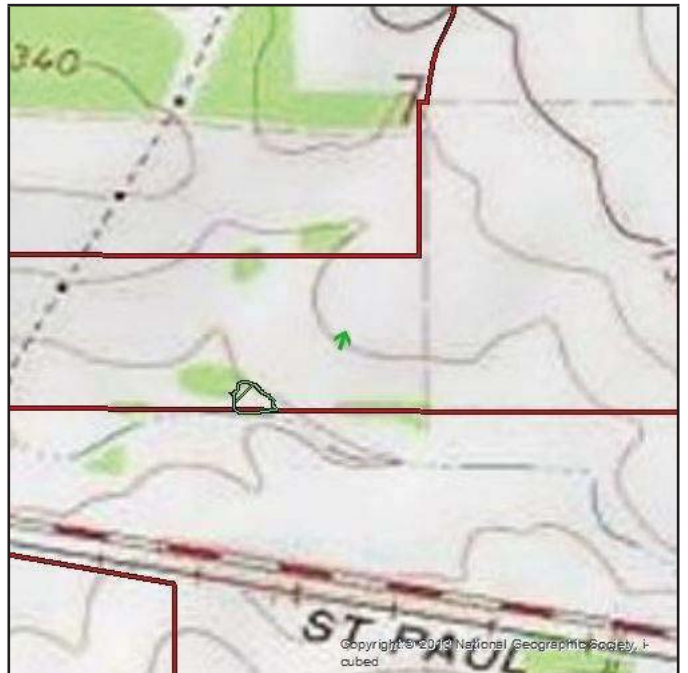
Feature ID	NW-15
Circular 39	Upland
Cowardin	Upland



**Attributes**

Feature ID	NW-15
Circular 39	Upland
Cowardin	Upland

NW-15



**Attributes**

Feature ID	NW-15
Circular 39	Upland
Cowardin	Upland



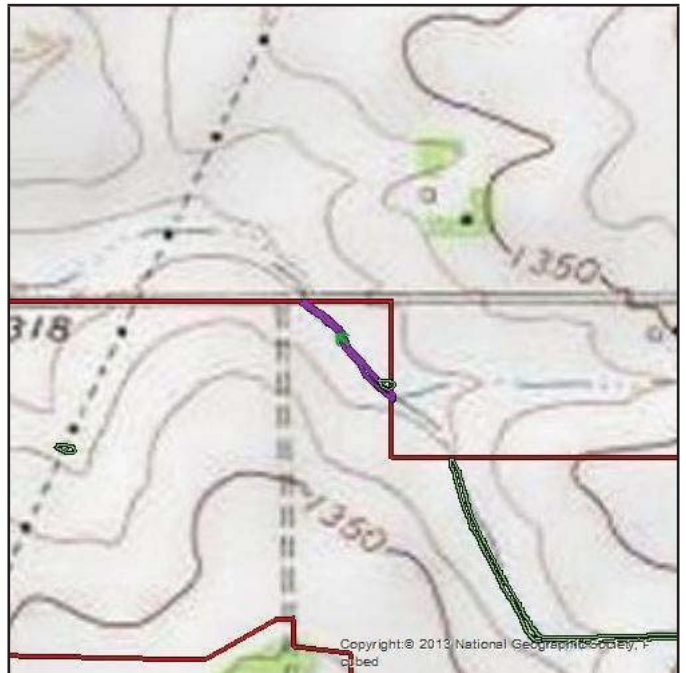
# Appendix C

## Watercourse Photographs and Data Forms

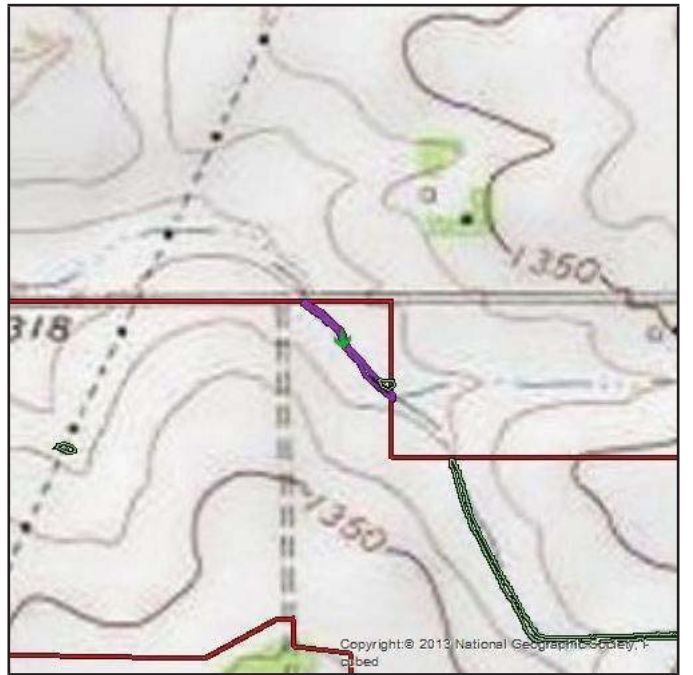
**Louise Solar Project**  
Mower County, Minnesota

This page is intentionally blank

WC-01

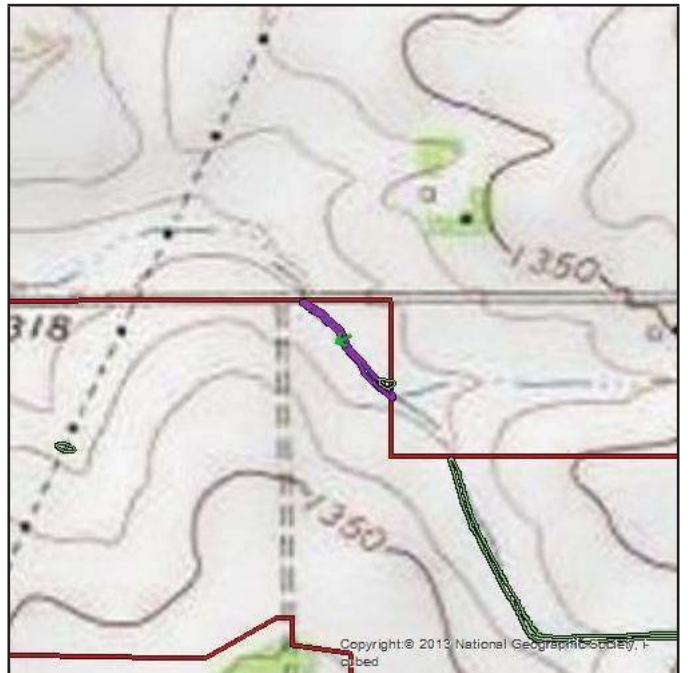


WC-01



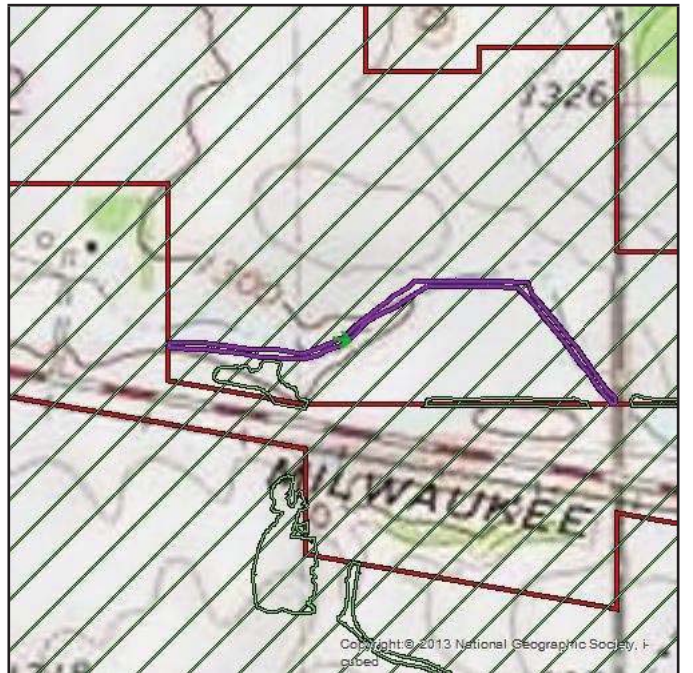
Copyright © 2013 National Geographic Society. All rights reserved.

WC-01

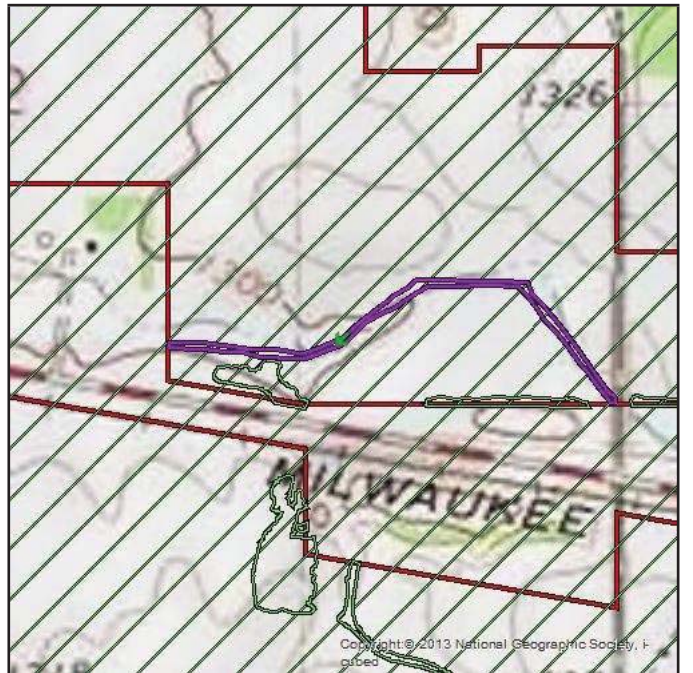


Attributes	
Feature ID	WC-01
Defined Bed and Bank	Yes
Waters of the US	No
Mapped on NHD	Yes
Mapped on NWI	Yes
Flow Characteristics	Ephemeral
Investigator	BJC
Water Width at Crossing (ft)	No water
Direction of Flow	NW
Water Depth at Crossing (ft)	No water
Top of Bank Width (ft)	15
Left Bank Height (ft) (looking Downstream)	4
Right Bank Height (ft) (looking Downstream)	4
OHWM Width (ft)	8
OHWM Height (ft From Substrate)	2
Evidence Of Scour or Erosion	Yes
OHWM Criteria	Natural line impressed on bank
Pools, Riffles, Runs Present?	None
Substrate	Loam

WC-02

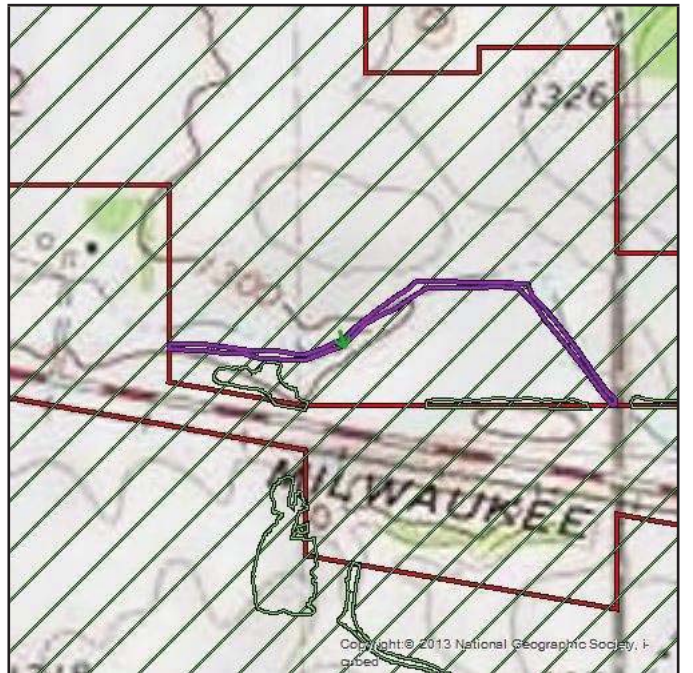


WC-02





WC-02



Attributes	
Feature ID	WC-02
Defined Bed and Bank	Yes
Waters of the US	Yes
Mapped on NHD	Yes
Mapped on NWI	Yes
Flow Characteristics	Intermittent
Investigator	BJC
Water Width at Crossing (ft)	12
Direction of Flow	W
Water Depth at Crossing (ft)	.5
Top of Bank Width (ft)	25
Left Bank Height (ft) (looking Downstream)	4
Right Bank Height (ft) (looking Downstream)	4
OHWM Width (ft)	14
OHWM Height (ft From Substrate)	2
Evidence Of Scour or Erosion	Yes
OHWM Criteria	Natural line impressed on bank
Pools, Riffles, Runs Present?	None
Substrate	Loam