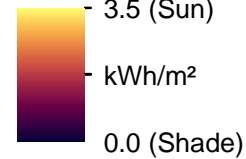


Data Source(s): Westwood (2021); ESRI WMS World Imagery Basemap (Accessed 2020); Minnesota Department of Commerce (2020).

Legend

- Project Area
- Wilmarth Evaluation Sites
- State Boundary
- County Boundary

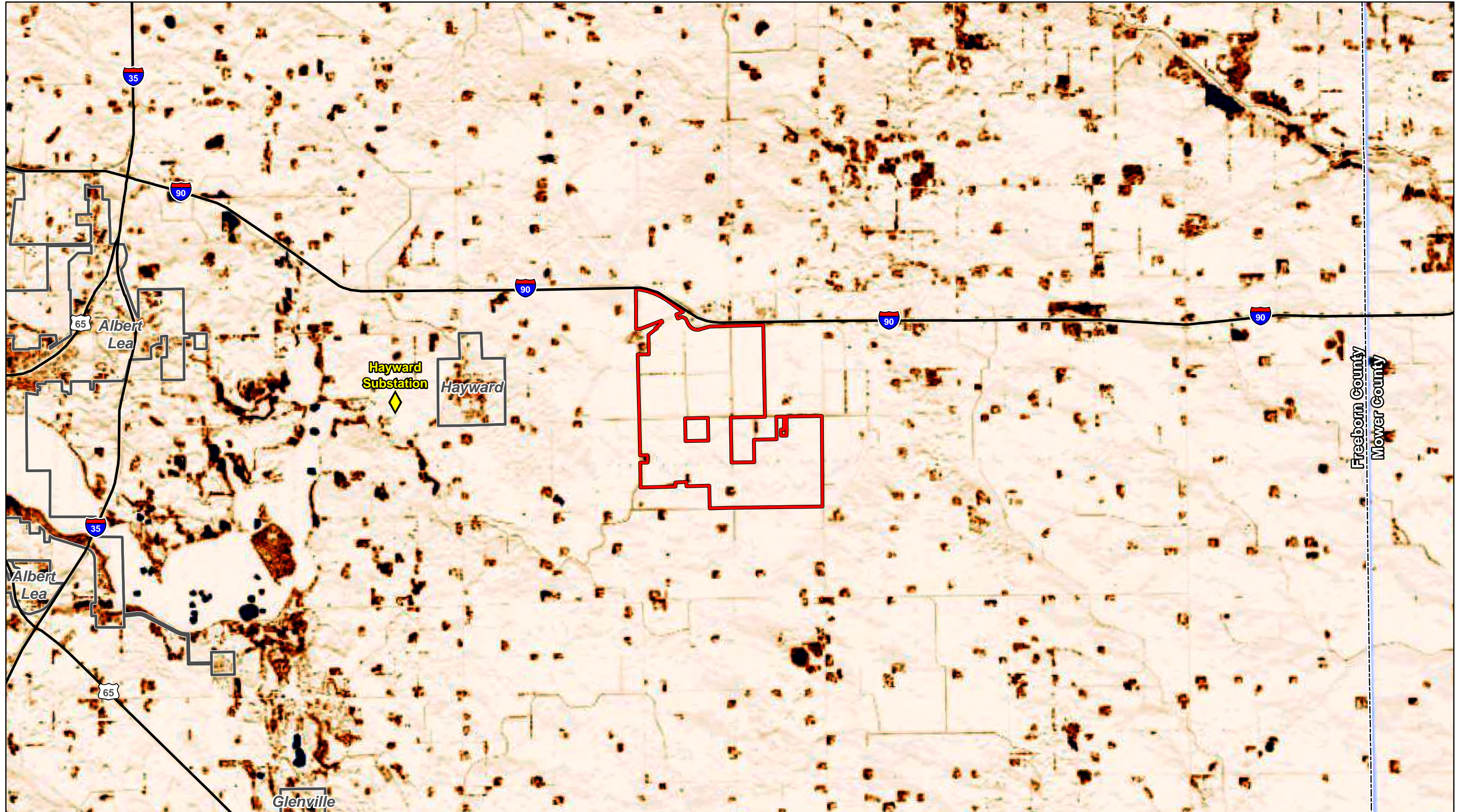
Minnesota Solar Potential



Hayward Solar Project

Freeborn County, Minnesota

Solar Resources
In Minnesota

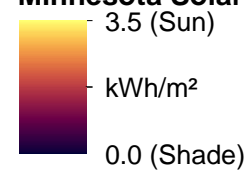


Data Source(s): Westwood (2021); Census Bureau (2019); Minnesota Department of Commerce (2020).

Legend

- Project Area
- Municipal Boundary
- County Boundary
- ◆ Hayward Substation
- Major Road

Minnesota Solar Potential



Hayward Solar Project

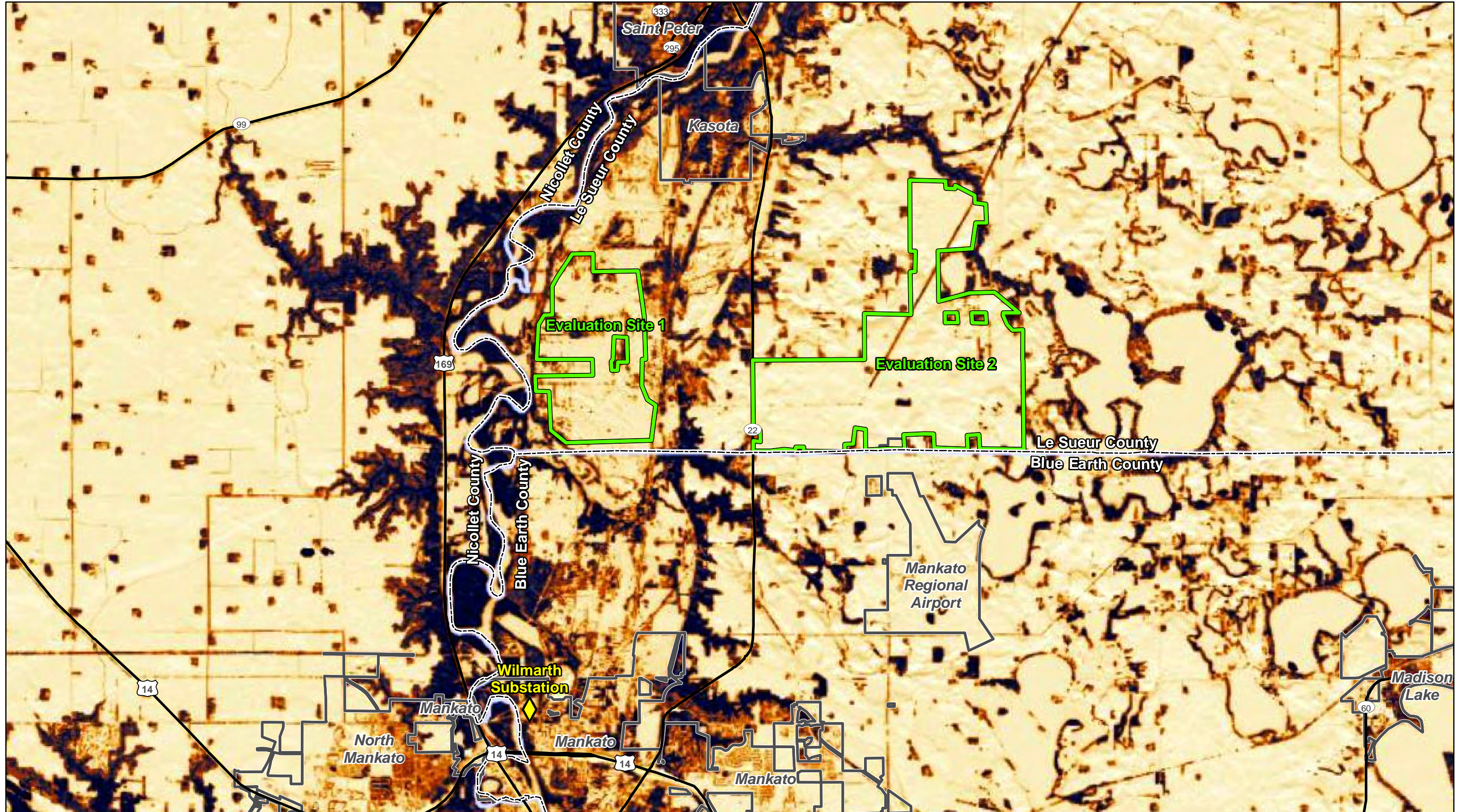
Freeborn County, Minnesota

MSSA Insolation at Project Area Site

Westwood

Toll Free (888) 937-5150 westwoodps.com
Westwood Professional Services, Inc.

Map Document: N:\0026599_00\GIS\Prime Farmland Exhibit\Hayward_PrimeFarmland_Ex08_MSSA\Insolation\Map\ProjectAreaSiteMap_210427.mxd 4/27/2021 3:50:32 PM radevito

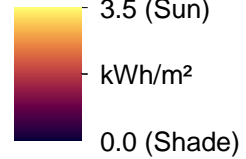


Data Source(s): Westwood (2021); Census Bureau (2019); Minnesota Department of Commerce (2020).

Legend

- Wilmarth Evaluation Sites
- Municipal Boundary
- County Boundary
- Major Road
- ◆ Wilmarth Substation

Minnesota Solar Potential



Westwood

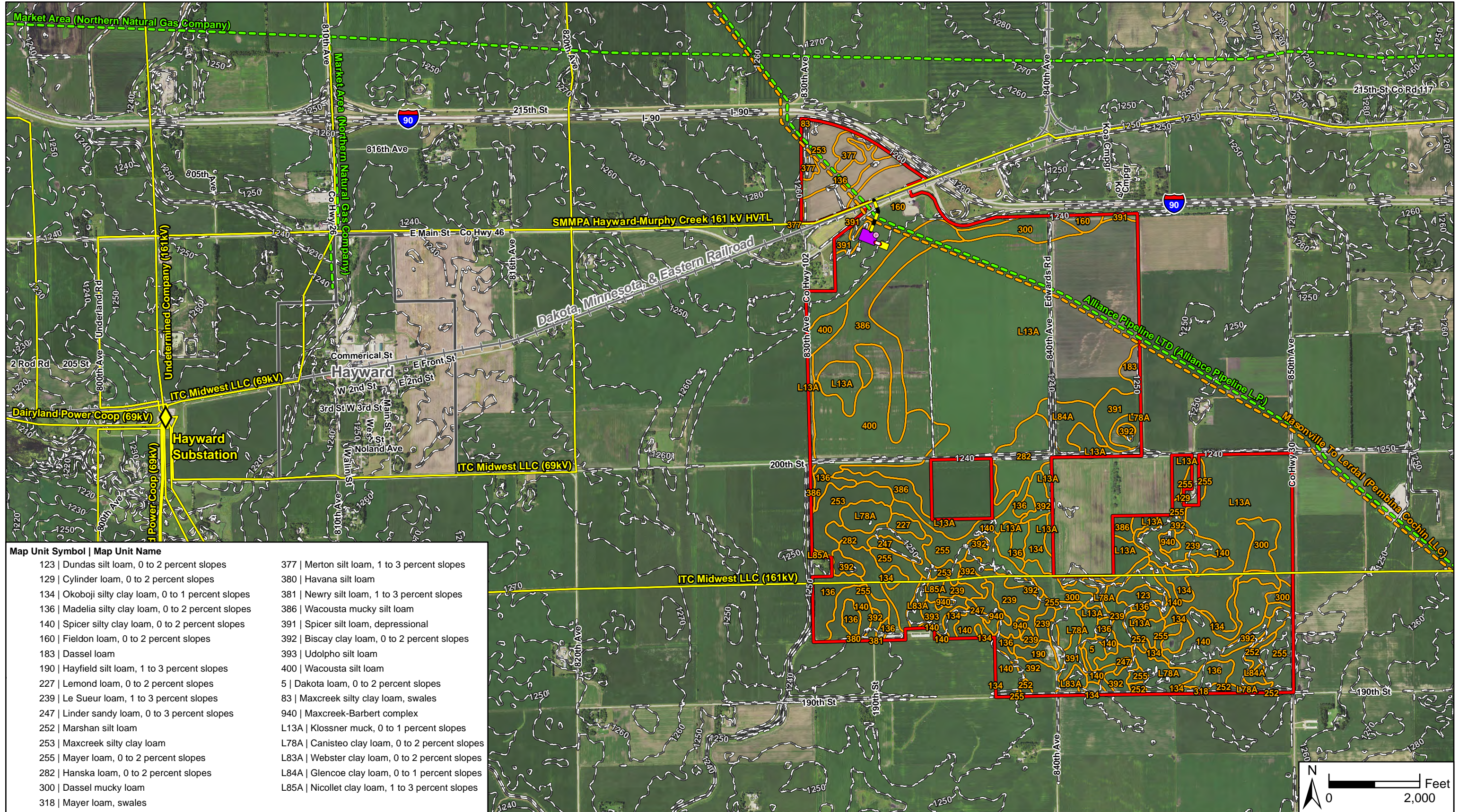
Toll Free (888) 937-5150 westwoodps.com
Westwood Professional Services, Inc.

Hayward Solar Project

Freeborn County, Minnesota

MSSA Insolation at
Wilmarth Evaluation Sites

Map Document: N:\0026599_00\GIS\Prime_Farmland_Exhibits\Hayward_PrimeFarm_Exc09_MSSA_Insolation\WilmarthEvaluationSitesMap_210429.mxd 4/29/2021 4:15:23 PM radevito



Map Unit Symbol	Map Unit Name
123	Dundas silt loam, 0 to 2 percent slopes
129	Cylinder loam, 0 to 2 percent slopes
134	Okoboji silty clay loam, 0 to 1 percent slopes
136	Madelia silty clay loam, 0 to 2 percent slopes
140	Spicer silty clay loam, 0 to 2 percent slopes
160	Fieldon loam, 0 to 2 percent slopes
183	Dassel loam
190	Hayfield silt loam, 1 to 3 percent slopes
227	Lemond loam, 0 to 2 percent slopes
239	Le Sueur loam, 1 to 3 percent slopes
247	Linder sandy loam, 0 to 3 percent slopes
252	Marshan silt loam
253	Maxcreek silty clay loam
255	Mayer loam, 0 to 2 percent slopes
282	Hanska loam, 0 to 2 percent slopes
300	Dassel mucky loam
318	Mayer loam, swales
377	Merton silt loam, 1 to 3 percent slopes
380	Havana silt loam
381	Newry silt loam, 1 to 3 percent slopes
386	Wacousta mucky silt loam
391	Spicer silt loam, depressional
392	Biscay clay loam, 0 to 2 percent slopes
393	Udolphon silt loam
400	Wacousta silt loam
5	Dakota loam, 0 to 2 percent slopes
83	Maxcreek silty clay loam, swales
940	Maxcreek-Barbert complex
L13A	Klossner muck, 0 to 1 percent slopes
L78A	Canisteco clay loam, 0 to 2 percent slopes
L83A	Webster clay loam, 0 to 2 percent slopes
L84A	Glencoe clay loam, 0 to 1 percent slopes
L85A	Nicollet clay loam, 1 to 3 percent slopes

Data Source(s): Westwood (2021); Minnesota NAIP Imagery (2019); Census Bureau (2019); Ventyx Velocity Suite, Ventyx Energy LLC. (2020); U.S. Department of Agriculture, Natural Resources Conservation Service (2020); NPMIS (2021). Existing pipeline routes are approximate.

Legend

- Project Area
- Proposed Project Substation
- NRCS Soil Boundary
- SMMPA Switchyard
- Proposed Project O&M Building
- POI
- SMMPA Line Tap
- Project Gen-Tie Line
- Existing Transmission Line
- Existing Natural Gas Pipeline
- Existing Crude Oil Pipeline
- 10ft Contour
- Municipal Boundary
- Railroad



Hayward Solar Project

Freeborn County, Minnesota

Topography & Soils of Project Area

