

Ms. Tricia L. DeBleekere
Minnesota Public Utilities Commission
121 7th Place East STE 350, St. Paul, MN 55101

RE: Big Blue Site Permit Major Deviations

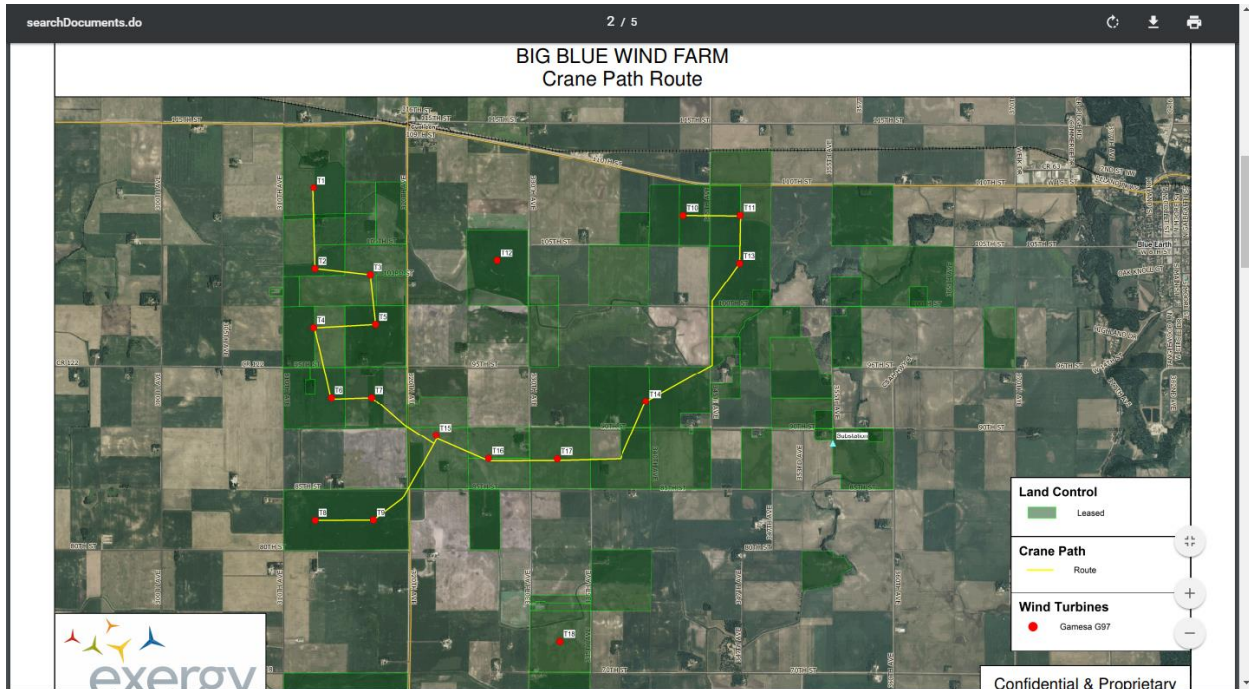
Dear Ms. DeBleekere

Big Blue made some major deviations from the permit, to what they actually built. It's like they applied for one project, but built a totally different project. They did not adhere to the Site Permit granted by the PUC on August 17, 2011.

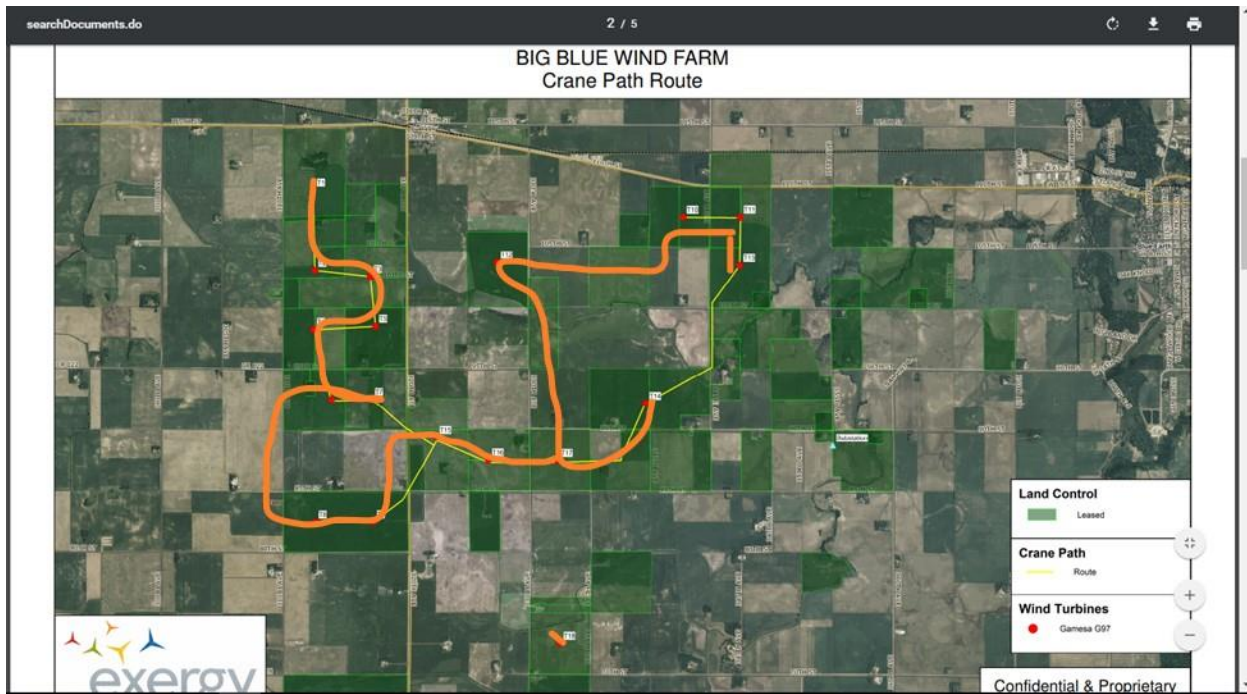
Crane route changed

Another breach of the Big Blue permit is the route for the construction crane was submitted on October 20th, 2011. (Docket ID #201110-67543-01) However the path they drove the crane is much different than the path they submitted.

This is the submitted crane route.



This is the Actual crane route.



As you can see, the Big Blue project has some major deviations from the Site Permit that have never been addressed by the Minnesota Public Utilities Commission, nor have these deviations been explained by Big Blue. Therefore I ask the Site Permit be suspended until the PUC and Big Blue can fix each issue, or revoke the Site Permit completely so decommissioning can begin.

As you can see, the Big Blue project has some major deviations from the Site Permit that have never been addressed by the Minnesota Public Utilities Commission, nor have these deviations been explained by Big Blue. Therefore I ask the Site Permit be suspended until the PUC and Big Blue can fix each issue, or revoke the Site Permit completely so decommissioning can begin.

Sincerely,

Dan Moore
Farmer
Blue Earth, Mn