



414 Nicollet Mall
Minneapolis, Minnesota 55401

November 17, 2014

--Via Electronic Filing--

Burl W. Haar
Executive Secretary
Minnesota Public Utilities Commission
121 7th Place East, Suite 350
St. Paul, MN 55101

RE: COMPLIANCE FILING
INTERRUPTIBLE SERVICE TARIFF MODIFICATIONS
DOCKET NO. G002/M-14-540

Dear Dr. Haar:

Northern States Power Company, doing business as Xcel Energy, submits this filing in compliance with the Minnesota Public Utilities Commission's October 17, 2014 ORDER in the above-referenced docket.

The Commission's ORDER approved the increase in the penalty charge for unauthorized use of gas and the recommended modifications to the tariffs of the Department of Commerce, Division of Energy Resources. The ORDER also required:

Xcel [Energy] shall make a compliance filing within 30 days that states Xcel [Energy]'s proposed policies and procedures regarding disconnection of service for unauthorized gas consumption and includes a draft tariff that illustrates this policy.

Proposed Policies and Procedures

Our proposed policies and procedures are included in this filing as Attachment A. Attachment B is a process flow chart showing the steps involved when disconnecting a customer for unauthorized gas consumption.

Tariff

We provide as Attachment C to this filing, the proposed tariff sheets in redline and clean format as follows:

Minnesota Gas Rate Book – MPUC No. 2:

Sheet No. 6-26, revision 2

Sheet No. 6-27, original

Sheet No. 6-27.1, original

We have electronically filed this document with the Minnesota Public Utilities Commission, and copies have been served on the parties on the attached service list.

Please contact me at paul.lehman@xcelenergy.com or 612-330-7529 if you have any questions regarding this filing.

Sincerely,

/s/

PAUL J LEHMAN
MANAGER, REGULATORY COMPLIANCE AND FILINGS

Enclosures

c: Service List

MissionMode and Curtailment

Controller actions during a MissionMode condition, to verify Interruptible Customers are offline, will coordinate the following.

Date Reviewed: 11/11/2014

Date Created: 11/11/2014

Written by: Todd Nodes

Reviewed by: Gas Controllers

Once a delivery system has reached the critical condition that required Gas Control to initiate a MissionMode, the following groups shall assist in identifying Interruptible customers (IT). This is necessary to ensure that IT customers have discontinued usage and not continuing to impact operations.

Engineering:

Shall review the Stoner model of the affected area.
Provide a list of all the interruptible customers by estimated usage.

Gas Metering:

Query the IT customer's current meter data to identify any violators.

Gas Dispatch/Emergency Response:

Should current meter data not be available – dispatch crews to check meters based on list from Engineering.

If flow continues, dispatch crew to lock the meter - unless already on site.

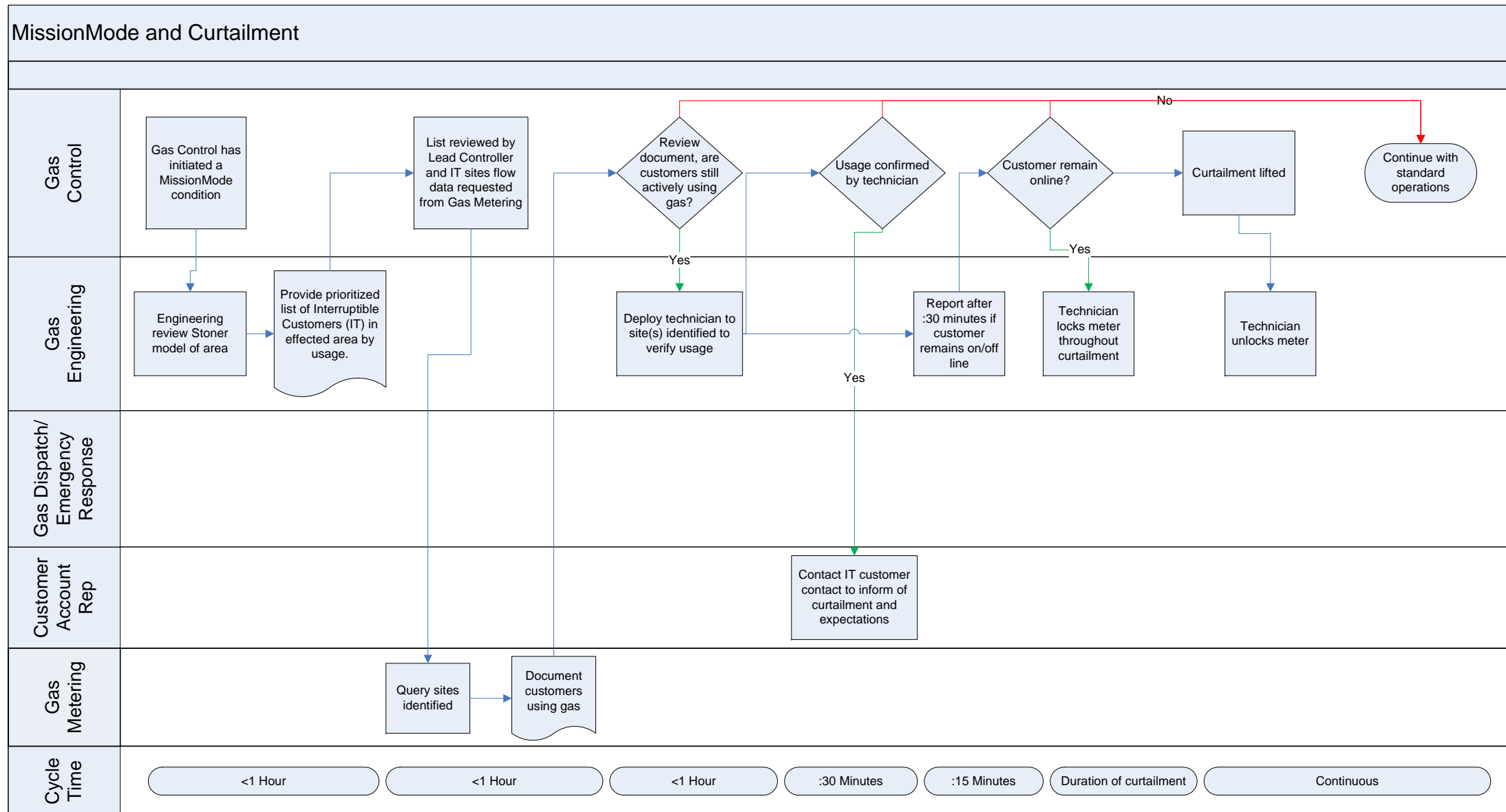
Once system curtailment is released, crews resent to unlock meters.

Customer Account Representatives:

Shall call the IT contacts and inform them that a curtailment has been implemented and systems identified them as still using gas and that their meter will be locked out if they continue to use gas.

Customer Billing:

Invoice locked meter accounts as appropriate.



Xcel Energy – Gas Control North

11/13/2014

Rev 1

Docket No. G002/M-14-540
Compliance Filing
Attachment C

Redline

MINNESOTA GAS RATE BOOK - MPUC NO. 2

GENERAL RULES AND REGULATIONS (Continued)

Section No. 6

~~1st~~^{2nd} Revised Sheet No. 26

6.2 CURTAILMENT OF COMPANY'S RETAIL SUPPLY (Continued)

Schedule of Priority of Service Categories (Continued)

4. All commercial and industrial requirements for non-boiler use 5,000 Therms per day and over, not otherwise classified; all commercial requirements from 5,000 Therms per day through 14,999 Therms per day, not otherwise classified.
5. Industrial requirements for boiler fuel use from 5,000 Therms per day through 14,999 Therms per day, not otherwise classified.
6. Commercial and industrial requirements for boiler fuel use from 15,000 Therms per day through 29,999 Therms per day, not otherwise classified.
7. Commercial and industrial requirements for boiler fuel use from 30,000 Therms per day through 100,000 Therms per day, not otherwise classified.
8. Commercial and industrial requirements for boiler fuel use over 100,000 Therms per day, not otherwise classified.
9. Gas consumed for generation of electricity.

N

(Continued on Sheet No. 6-27)

Date Filed: ~~11-12-09~~¹¹⁻¹⁷⁻¹⁴ By: ~~Judy M. Pifer~~^{David M. Sparby} Effective Date: ~~05-01-11~~
President and CEO of Northern States Power Company, a Minnesota corporation
Docket No. G002/~~GR-09-1153M-14-540~~ Order Date: ~~12-06-10~~

MINNESOTA GAS RATE BOOK - MPUC NO. 2

GENERAL RULES AND REGULATIONS (Continued)

Section No. 6
Original Sheet No. 27

6.2 CURTAILMENT OF COMPANY'S RETAIL SUPPLY (Continued)

Policies and Procedures-Disconnection of Service for Unauthorized Gas Consumption

MissionMode and Curtailment

Controller actions during a MissionMode condition, to verify Interruptible Customers are offline, will coordinate the following.

Date Reviewed: 11/11/2014
Date Created: 11/11/2014
Written by: Todd Nodes
Reviewed by: Gas Controllers

Once a delivery system has reached the critical condition that required Gas Control to initiate a MissionMode, the following groups shall assist in identifying Interruptible customers (IT). This is necessary to ensure that IT customers have discontinued usage and not continuing to impact operations.

Engineering:
Shall review the Stoner model of the affected area.
Provide a list of all the interruptible customers by estimated usage.

Gas Metering:
Query the IT customer's current meter data to identify any violators.

Gas Dispatch/Emergency Response:
Should current meter data not be available – dispatch crews to check meters based on list from Engineering.

If flow continues, dispatch crew to lock the meter - unless already on site.

Once system curtailment is released, crews resent to unlock meters.

Customer Account Representatives:
Shall call the IT contacts and inform them that a curtailment has been implemented and systems identified them as still using gas and that their meter will be locked out if they continue to use gas.

Customer Billing:
Invoice locked meter accounts as appropriate.

Page 1 of 1

(Continued on Sheet No. 6-27.1)

Date Filed: 11-17-14 By: David M. Sparby Effective Date:
President and CEO of Northern States Power Company, a Minnesota corporation
Docket No. G002/M-14-540 Order Date:

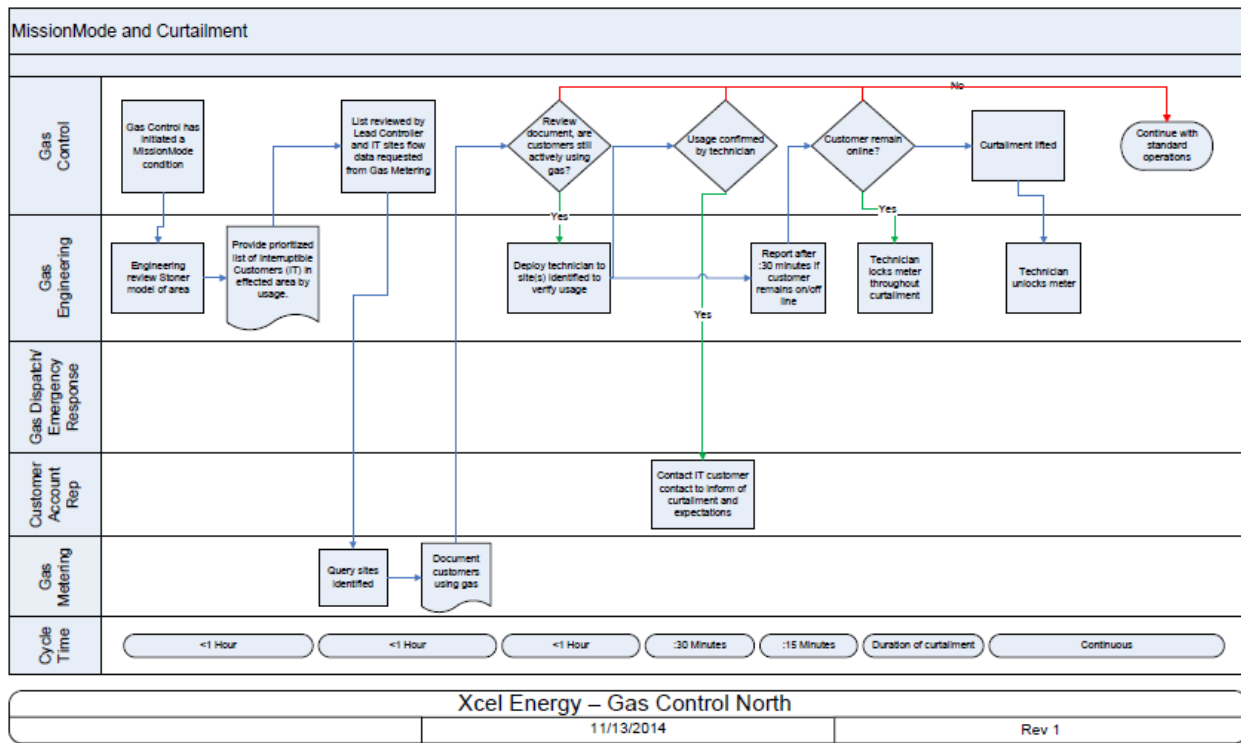
MINNESOTA GAS RATE BOOK - MPUC NO. 2

GENERAL RULES AND REGULATIONS (Continued)

Section No. 6
 Original Sheet No. 27.1

6.2 CURTAILMENT OF COMPANY'S RETAIL SUPPLY (Continued)

Policies and Procedures-Disconnection of Service for Unauthorized Gas Consumption (Continued)



Date Filed: 11-17-14

By: David M. Sparby

Effective Date:

President and CEO of Northern States Power Company, a Minnesota corporation

Docket No. G002/M-14-540

Order Date:

Docket No. G002/M-14-540
Compliance Filing
Attachment C

Clean

MINNESOTA GAS RATE BOOK - MPUC NO. 2

GENERAL RULES AND REGULATIONS (Continued)

Section No. 6
2nd Revised Sheet No. 26

6.2 CURTAILMENT OF COMPANY'S RETAIL SUPPLY (Continued)

Schedule of Priority of Service Categories (Continued)

4. All commercial and industrial requirements for non-boiler use 5,000 Therms per day and over, not otherwise classified; all commercial requirements from 5,000 Therms per day through 14,999 Therms per day, not otherwise classified.
5. Industrial requirements for boiler fuel use from 5,000 Therms per day through 14,999 Therms per day, not otherwise classified.
6. Commercial and industrial requirements for boiler fuel use from 15,000 Therms per day through 29,999 Therms per day, not otherwise classified.
7. Commercial and industrial requirements for boiler fuel use from 30,000 Therms per day through 100,000 Therms per day, not otherwise classified.
8. Commercial and industrial requirements for boiler fuel use over 100,000 Therms per day, not otherwise classified.
9. Gas consumed for generation of electricity.

(Continued on Sheet No. 6-27)

Date Filed: 11-17-14 By: David M. Sparby Effective Date:
President and CEO of Northern States Power Company, a Minnesota corporation
Docket No. G002/M-14-540 Order Date:

MINNESOTA GAS RATE BOOK - MPUC NO. 2

GENERAL RULES AND REGULATIONS (Continued)

Section No. 6
Original Sheet No. 27

6.2 CURTAILMENT OF COMPANY'S RETAIL SUPPLY (Continued)

Policies and Procedures-Disconnection of Service for Unauthorized Gas Consumption

MissionMode and Curtailment

Controller actions during a MissionMode condition, to verify Interruptible Customers are offline, will coordinate the following.

Date Reviewed: 11/11/2014
Date Created: 11/11/2014
Written by: Todd Nodes
Reviewed by: Gas Controllers

Once a delivery system has reached the critical condition that required Gas Control to initiate a MissionMode, the following groups shall assist in identifying Interruptible customers (IT). This is necessary to ensure that IT customers have discontinued usage and not continuing to impact operations.

Engineering:
Shall review the Stoner model of the affected area.
Provide a list of all the interruptible customers by estimated usage.

Gas Metering:
Query the IT customer's current meter data to identify any violators.

Gas Dispatch/Emergency Response:
Should current meter data not be available – dispatch crews to check meters based on list from Engineering.

If flow continues, dispatch crew to lock the meter - unless already on site.

Once system curtailment is released, crews resent to unlock meters.

Customer Account Representatives:
Shall call the IT contacts and inform them that a curtailment has been implemented and systems identified them as still using gas and that their meter will be locked out if they continue to use gas.

Customer Billing:
Invoice locked meter accounts as appropriate.

Page 1 of 1

(Continued on Sheet No. 6-27.1)

Date Filed: 11-17-14 By: David M. Sparby Effective Date:
President and CEO of Northern States Power Company, a Minnesota corporation
Docket No. G002/M-14-540 Order Date:

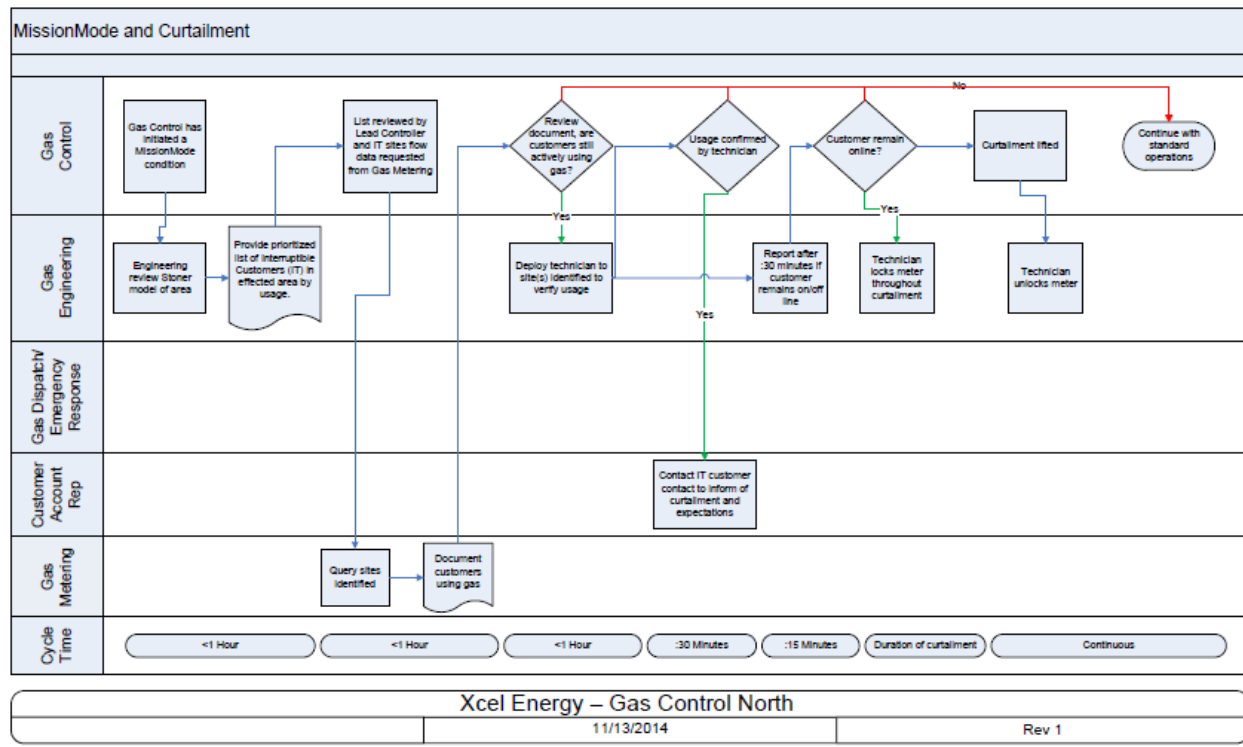
MINNESOTA GAS RATE BOOK - MPUC NO. 2

GENERAL RULES AND REGULATIONS (Continued)

Section No. 6
 Original Sheet No. 27.1

6.2 CURTAILMENT OF COMPANY'S RETAIL SUPPLY (Continued)

Policies and Procedures-Disconnection of Service for Unauthorized Gas Consumption (Continued)



Date Filed: 11-17-14

By: David M. Sparby

Effective Date:

President and CEO of Northern States Power Company, a Minnesota corporation

Docket No. G002/M-14-540

Order Date:

CERTIFICATE OF SERVICE

I, Tiffany Hughes, hereby certify that I have this day served copies of the foregoing document on the attached list of persons.

xx by depositing a true and correct copy thereof, properly enveloped with postage paid in the United States mail at Minneapolis, Minnesota

xx electronic filing

DOCKET No. G002/M-14-540

Dated this 17th day of November 2014

/s/

Tiffany Hughes
Records Analyst

First Name	Last Name	Email	Company Name	Address	Delivery Method	View Trade Secret	Service List Name
Julia	Anderson	Julia.Anderson@ag.state.mn.us	Office of the Attorney General-DOC	1800 BRM Tower 445 Minnesota St St. Paul, MN 551012134	Electronic Service	Yes	OFF_SL_14-540_M-14-540
Alison C	Archer	alison.c.archer@xcelenergy.com	Xcel Energy	414 Nicollet Mall FL 5 Minneapolis, MN 55401	Electronic Service	No	OFF_SL_14-540_M-14-540
Jeffrey A.	Daugherty	jeffrey.daugherty@centerpointenergy.com	CenterPoint Energy	800 LaSalle Ave Minneapolis, MN 55402	Electronic Service	No	OFF_SL_14-540_M-14-540
Ian	Dobson	ian.dobson@ag.state.mn.us	Office of the Attorney General-RUD	Antitrust and Utilities Division 445 Minnesota Street, 1400 BRM Tower St. Paul, MN 55101	Electronic Service	No	OFF_SL_14-540_M-14-540
Sharon	Ferguson	sharon.ferguson@state.mn.us	Department of Commerce	85 7th Place E Ste 500 Saint Paul, MN 551012198	Electronic Service	No	OFF_SL_14-540_M-14-540
Todd J.	Guerrero	todd.guerrero@kutakrock.com	Kutak Rock LLP	Suite 1750 220 South Sixth Street Minneapolis, MN 554021425	Electronic Service	No	OFF_SL_14-540_M-14-540
Burl W.	Haar	burl.haar@state.mn.us	Public Utilities Commission	Suite 350 121 7th Place East St. Paul, MN 551012147	Electronic Service	Yes	OFF_SL_14-540_M-14-540
Sandra	Hofstetter	N/A	MN Chamber of Commerce	7261 County Road H Fremont, WI 54940-9317	Paper Service	No	OFF_SL_14-540_M-14-540
Michael	Hoppe	il23@mtn.org	Local Union 23, I.B.E.W.	932 Payne Avenue St. Paul, MN 55130	Electronic Service	No	OFF_SL_14-540_M-14-540
Richard	Johnson	Rick.Johnson@lawmoss.com	Moss & Barnett	150 S. 5th Street Suite 1200 Minneapolis, MN 55402	Electronic Service	No	OFF_SL_14-540_M-14-540

First Name	Last Name	Email	Company Name	Address	Delivery Method	View Trade Secret	Service List Name
Michael	Krikava	mkrikava@briggs.com	Briggs And Morgan, P.A.	2200 IDS Center 80 S 8th St Minneapolis, MN 55402	Electronic Service	No	OFF_SL_14-540_M-14-540
John	Lindell	agorud.ecf@ag.state.mn.us	Office of the Attorney General-RUD	1400 BRM Tower 445 Minnesota St St. Paul, MN 551012130	Electronic Service	Yes	OFF_SL_14-540_M-14-540
Andrew	Moratzka	apmoratzka@stoel.com	Stoel Rives LLP	33 South Sixth Street Suite 4200 Minneapolis, MN 55402	Electronic Service	No	OFF_SL_14-540_M-14-540
David W.	Niles	david.niles@avantenergy.com	Minnesota Municipal Power Agency	Suite 300 200 South Sixth Street Minneapolis, MN 55402	Electronic Service	No	OFF_SL_14-540_M-14-540
SaGonna	Thompson	Regulatory.Records@xcelenergy.com	Xcel Energy	414 Nicollet Mall FL 7 Minneapolis, MN 554011993	Electronic Service	No	OFF_SL_14-540_M-14-540