

## NOTICE OF ADDITIONAL COMMENT PERIOD

Issued: *April 3, 2018*

**In the Matter of the Application of Flying Cow Wind, LLC for a Site Permit for the up to 152 MW Large Wind Energy Conversion System in Yellow Medicine County, Minnesota**

**PUC Docket Number(s):** IP6984/WS-17-749

**Comment Period:** Comment period closes **April 13, 2018** at 4:30pm

*Comments received after comment period closes may not be considered.*

### Topic(s) Open for Comment:

- What are the potential human and environmental impacts as result of the revised project scope to be considered in the environmental document and in the draft site permit?
- What are the **possible methods to minimize, mitigate, or avoid potential impacts** of the proposed revised project?
- Are there any **unique characteristics** of the proposed changes to the project that should be considered?
- Are there **any items missing or mischaracterized** in the addendum to the Site Permit Application filed on March 28, 2018?

**Background:** On November 9, 2017, Flying Cow Wind, LLC, an affiliate of Renewable Energy Systems Americas, Inc., filed an application for a Site Permit for an up to 152 megawatt (MW) wind project in Yellow Medicine County. The project would include construction of up to 37 wind turbines and associated facilities. Associated facilities would include underground collection and fiber optic lines, project substation and interconnection switchyard, a 10-mile 345 kV transmission line, an operations and maintenance building, two permanent meteorological towers, and gravel access roads.

Note: the substation and the 345 kV transmission line will be permitted and built entirely in Deuel County, South Dakota.

On March 28, 2018, the Applicant filed an addendum to the Site Permit Application to supplement the original application and incorporate a number of changes to the proposed project. The revised proposal increases the number of turbines from 37 to 44 (plus 8 alternate turbine locations), and includes a revised layout for the access roads, collection cables and a meteorological tower. The applicant has stated the changes were necessary because one of the two turbine types proposed in the original application, the 4.2 MW wind turbine, was unavailable from the manufacturer. As a result of this equipment change, the entire project will use the smaller 3.45 MW turbine model, requiring more turbines to achieve the same 152 MW nameplate capacity for the project.

**Filing Requirements:** Utilities, telecommunications carriers, official parties, and state agencies are **required** to file documents using the Commission’s electronic filing system (eFiling). All parties, participants and interested persons are encouraged to use eFiling: [mn.gov/puc](http://mn.gov/puc), select *eFiling*, and follow the prompts.

**Comment Period:** Comments accepted through Friday, April 13, 2018

Please include the PUC Docket Numbers in all communications.

**Online** [mn.gov/commerce/energyfacilities/#comment](http://mn.gov/commerce/energyfacilities/#comment)

**Email** [bill.storm@state.mn.us](mailto:bill.storm@state.mn.us)

**U.S. Mail** William Storm, Environmental Review Manager  
Minnesota Department of Commerce  
85 7<sup>th</sup> Place East, Suite 500  
St. Paul MN 55101

**Phone** 651-539-1844

**Important** Comments will be made available to the public via the Public Utilities Commission’s and the Department of Commerce’s websites, except in limited circumstances consistent with the Minnesota Government Data Practices Act. Personally identifying information is not edited or deleted from submissions.

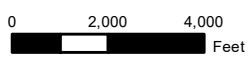
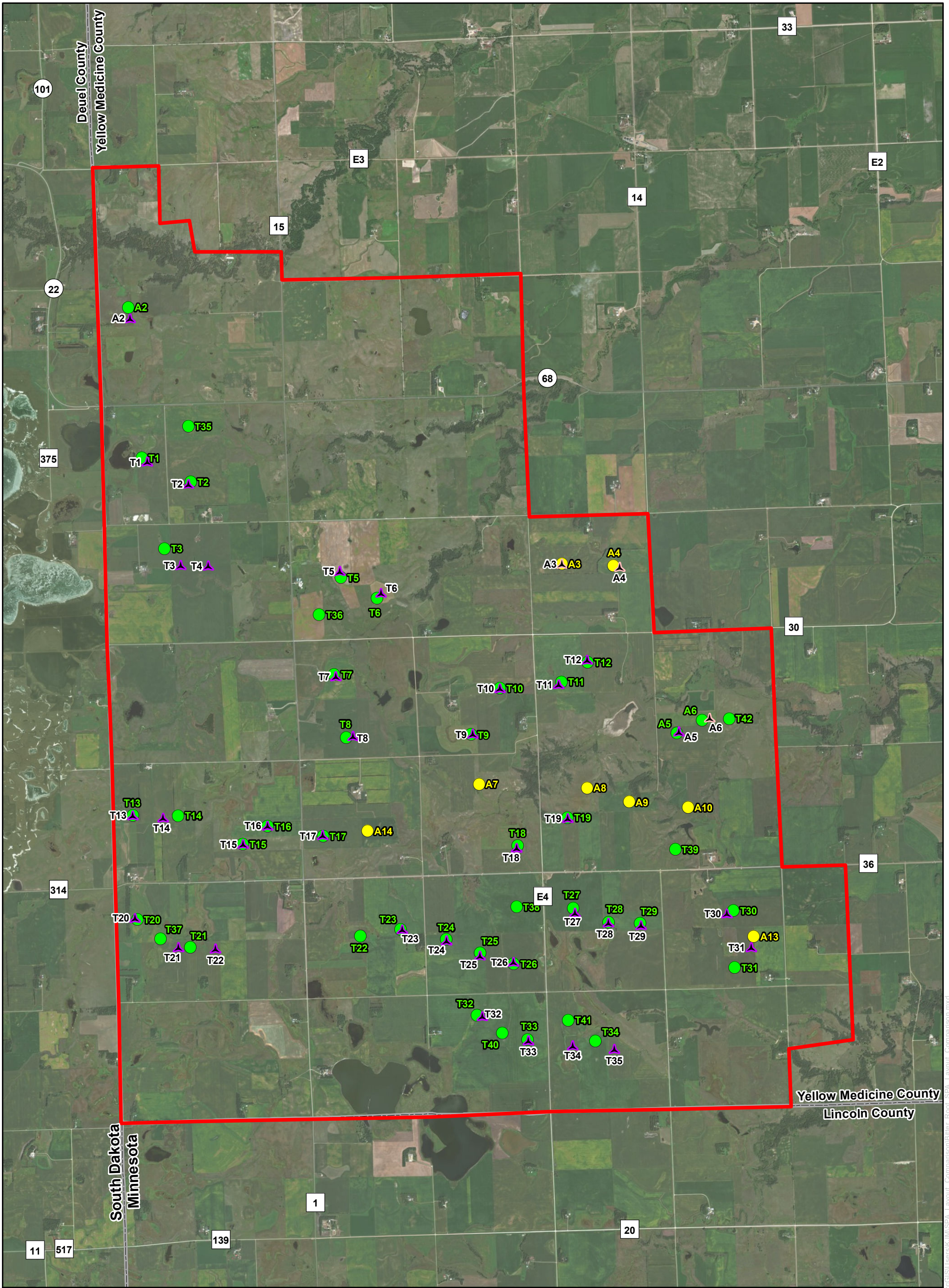
**Full Case Record:** See all documents filed in this docket via the Commission’s website at [mn.gov/puc](http://mn.gov/puc), select *Search eDockets*, enter the year (“17”) and the docket number (“749”), select *Search*.

**Subscribe** to receive email notification when new documents are filed in this docket at [mn.gov/puc](http://mn.gov/puc), select *Subscribe* and follow the prompts.

**Questions about this docket or Commission process and procedure?** Contact Commission staff, Cezar Panait, at (651) 201-2207, [Cezar.Panait@state.mn.us](mailto:Cezar.Panait@state.mn.us) or Charley Bruce, Public Advisor at (651) 201-2251, [publicadvisor.puc@state.mn.us](mailto:publicadvisor.puc@state.mn.us).

**Change your mailing preferences:** Email [docketing.puc@state.mn.us](mailto:docketing.puc@state.mn.us) or call Jamie Eschbach at 651-201-2204.

To request this document in another format such as large print or audio, call 651.296.0406 (voice). Persons with a hearing or speech impairment may call using their preferred Telecommunications Relay Service or email [consumer.puc@state.mn.us](mailto:consumer.puc@state.mn.us) for assistance.



1 inch = 4,000 feet



**Turbine Layout Comparison**  
**Bitter Root Wind Farm**  
**Flying Cow Wind, LLC**  
**Yellow Medicine County, Minnesota**

- Project Boundary
- Original SPA Layout (40 Total)**
  - ▲ Proposed Turbines (37)
  - ▲ Proposed Alternate Turbines (3)
- Addendum SPA Layout (52 Total)**
  - Proposed Turbines (44)
  - Proposed Alternate Turbines (8)