

Corrections to Environmental Report prepared for the Walleye Wind Project in Rock County: Corrected Maps

PUC Docket IP-7026/CN-20-269

Submitted by the Minnesota Department of Commerce Energy, Environmental Review and Analysis

April 22, 2021

Summary

The Minnesota Department of Commerce, Energy Environmental Review and Analysis (EERA) staff identified labeling errors in the maps included in the Environmental Report (ER) prepared for the Walleye Wind Project in Rock County.

In late January 2021, Walleye Wind, LLC changed the turbine numbering in late January to better differentiate the primary and alternate turbine locations. Except for the removal of one turbine, the layout is consistent with the layout shown in the amended certificate of need and site permit applications submitted in November 2020.

Unfortunately, the maps prepared for the ER issued on March 31, 2021 use an earlier numbering system and are inconsistent with the more recent information that Walleye Wind, LLC has provided. As a result of this oversight, turbines are numbered incorrectly in several of the maps included in the ER. This error does not affect the analysis done in the ER.

EERA staff submits corrected copies of the following maps for the purposes of clarifying the record.




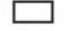



ER Text: Figure 1

Appendix C:

- Map 2 – Project Layout
- Map 3 – Constraints
- Map 5 – Wetlands
- Map 6 – Land Cover
- Map 7 – Unique Features
- Map 8 – Shadow Flicker
- Map 0 – Noise

Maps 1 (Project Location) and 4 (Water Resources) do not identify turbines and the maps included in the ER do not require correction.

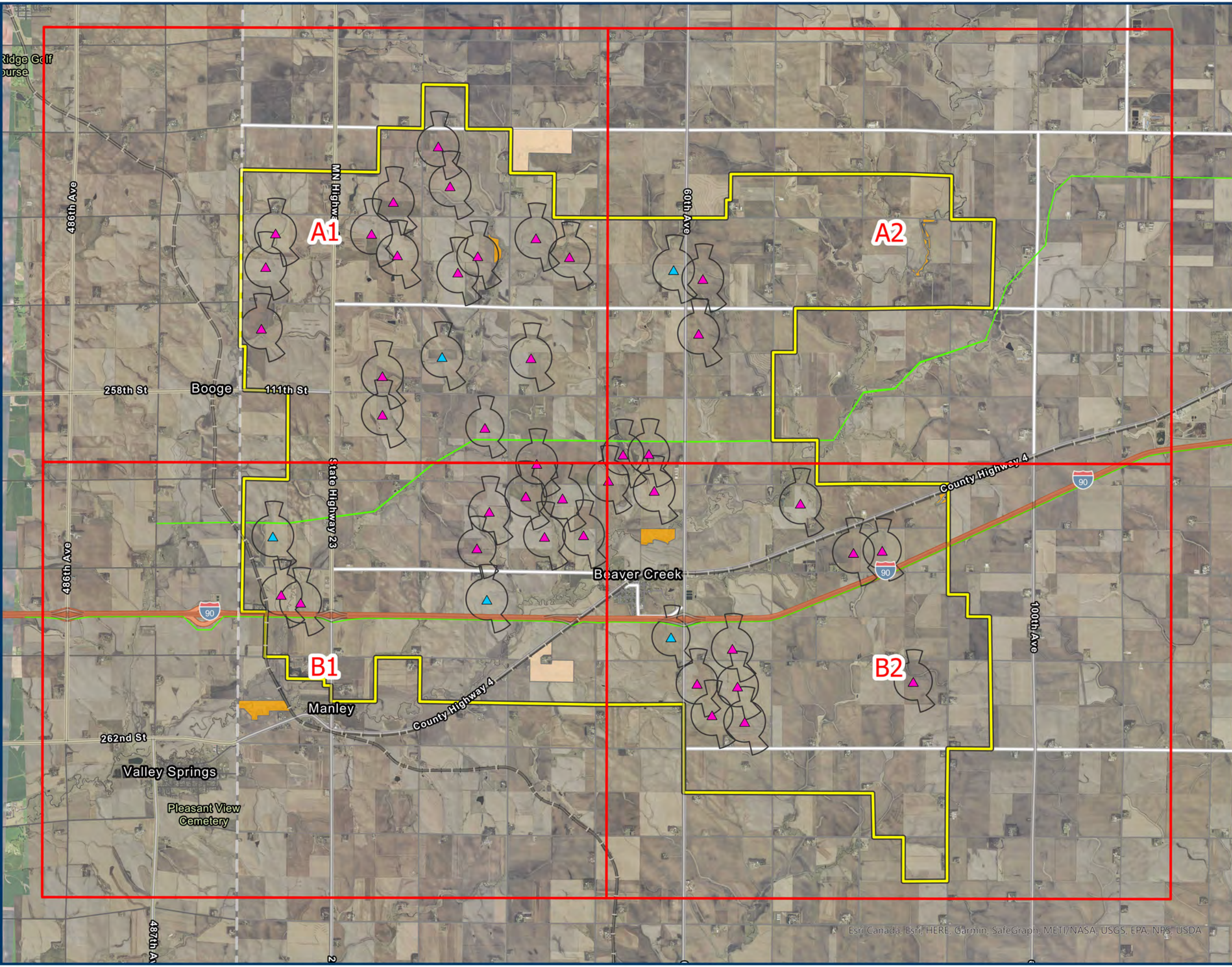
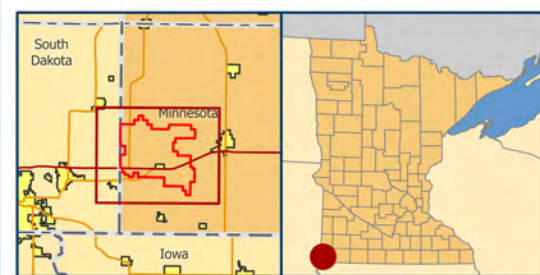
Map 3 Site Constraints Overview
Walleye Wind ER

-  Site Boundary
-  Primary Turbine
-  Alternate Turbine
-  3x5 Turbine Setback
-  Existing Transmission
-  Wildlife Management Area
-  RIM Easement
-  Detail Map Grid

Corrected April 2021
















Scale: 1:66,000

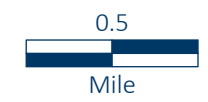


Map 3 Site Constraints Detail
Walleye Wind ER

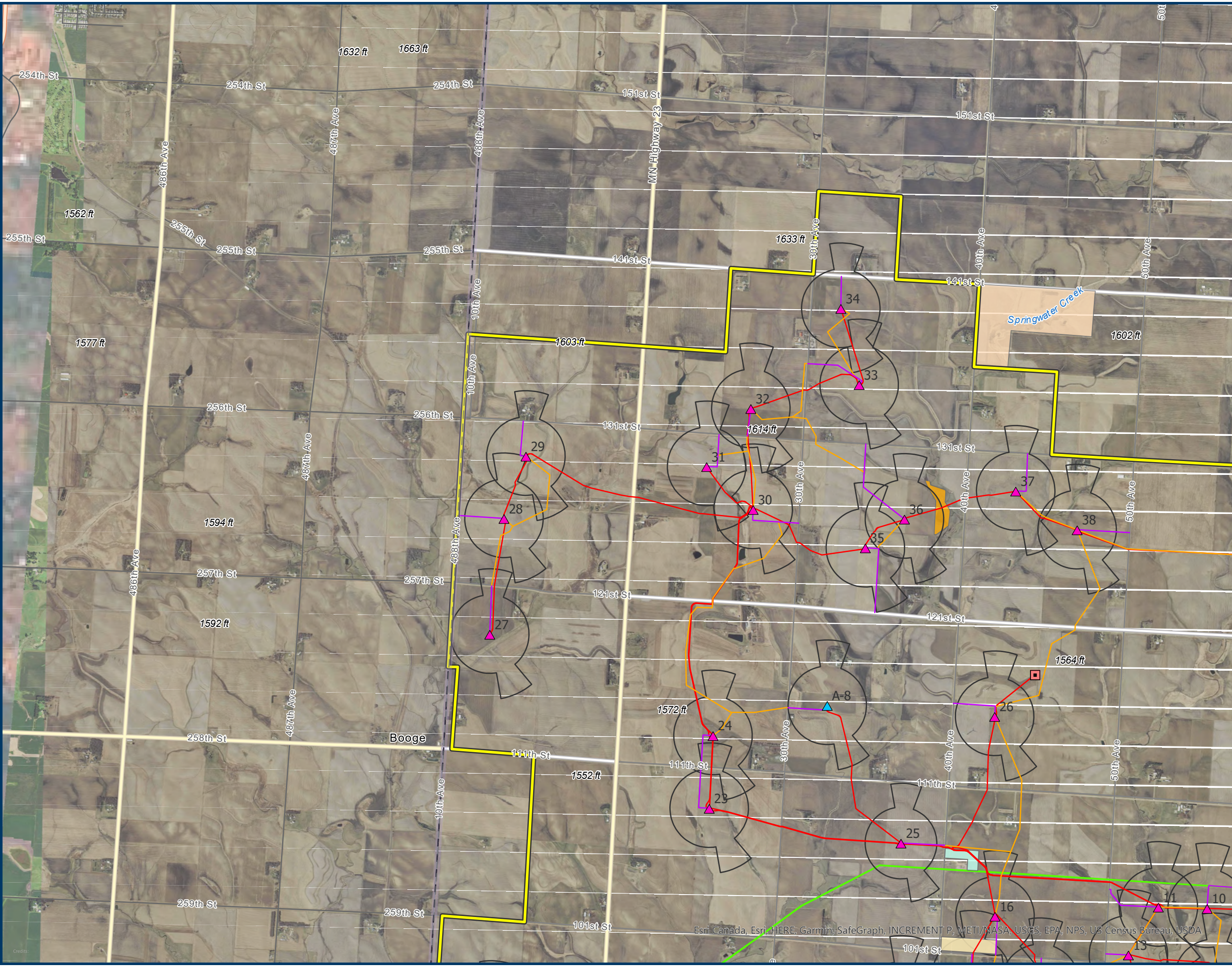
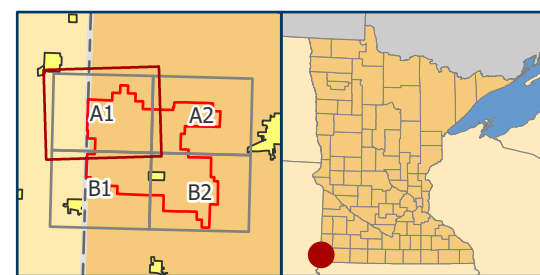
Map: A1

-  Site Boundary
-  Primary Turbine
-  Alternate Turbine
-  ADLS Tower
-  O&M and Project Substation
-  Laydown Yard
-  Access Road
-  Crane Path
-  Collection Line
-  3x5 Turbine Setback
-  Existing Transmission
-  RIM Easement
-  Wildlife Management Area

Corrected April 2021



Scale: 1:35,000

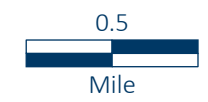


Map 3 Site Constraints Detail
Walleye Wind ER

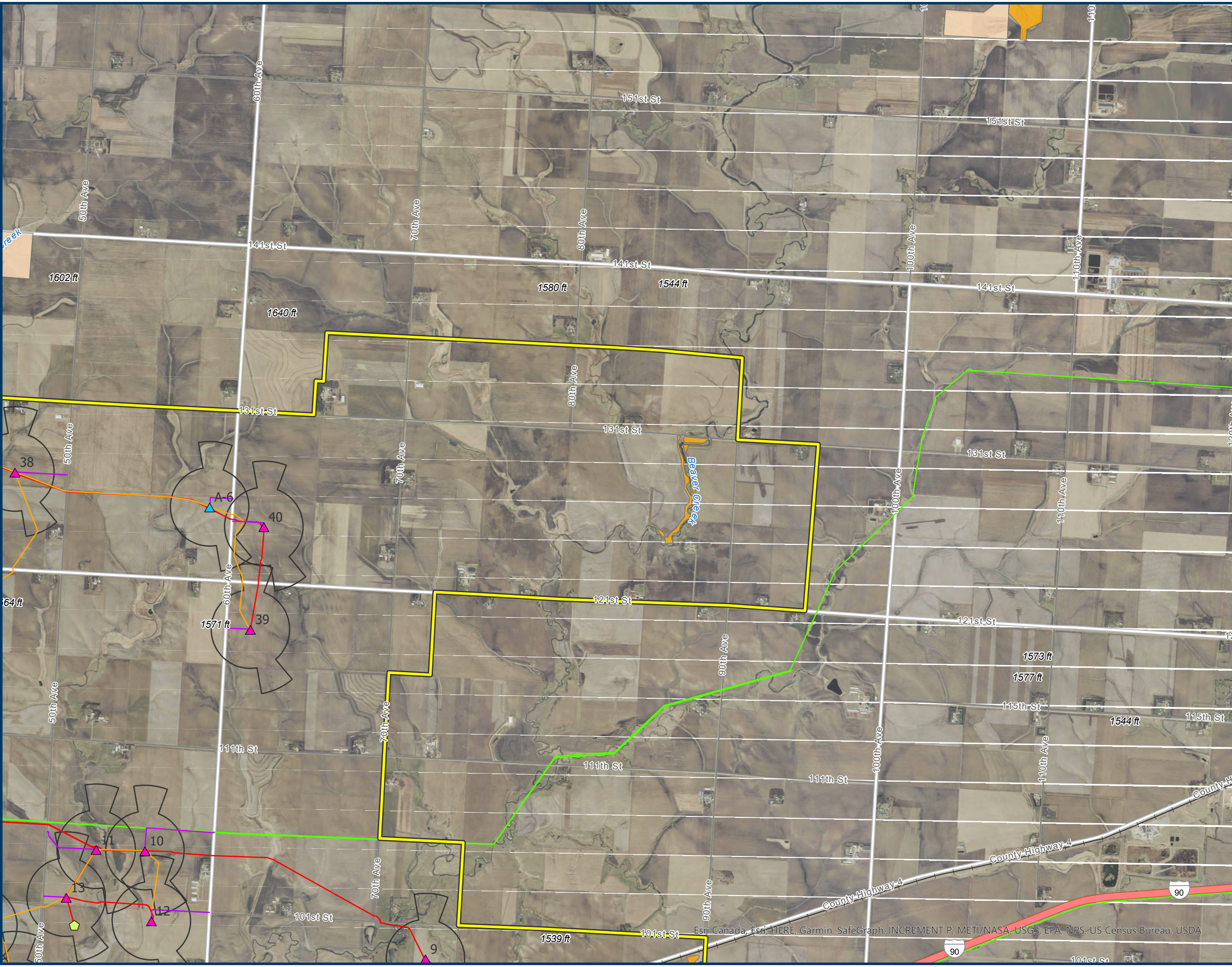
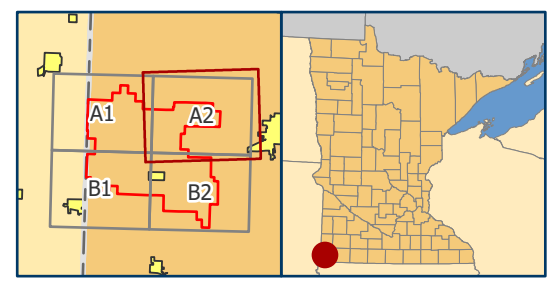
Map: A2

- Site Boundary
- Primary Turbine
- Alternate Turbine
- MET Tower
- Access Road
- Crane Path
- Collection Line
- 3x5 Turbine Setback
- Existing Transmission
- RIM Easement
- Wildlife Management Area

Corrected April 2021







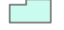








Scale: 1:35,000



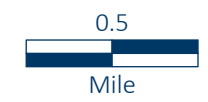
Esri, Canada, Esri, HERE, Garmin, SafeGraph, INCREMENT P, METI/NASA, USGS, EPA, NPS, US Census Bureau, USDA

Map 3 Site Constraints Detail
Walleye Wind ER

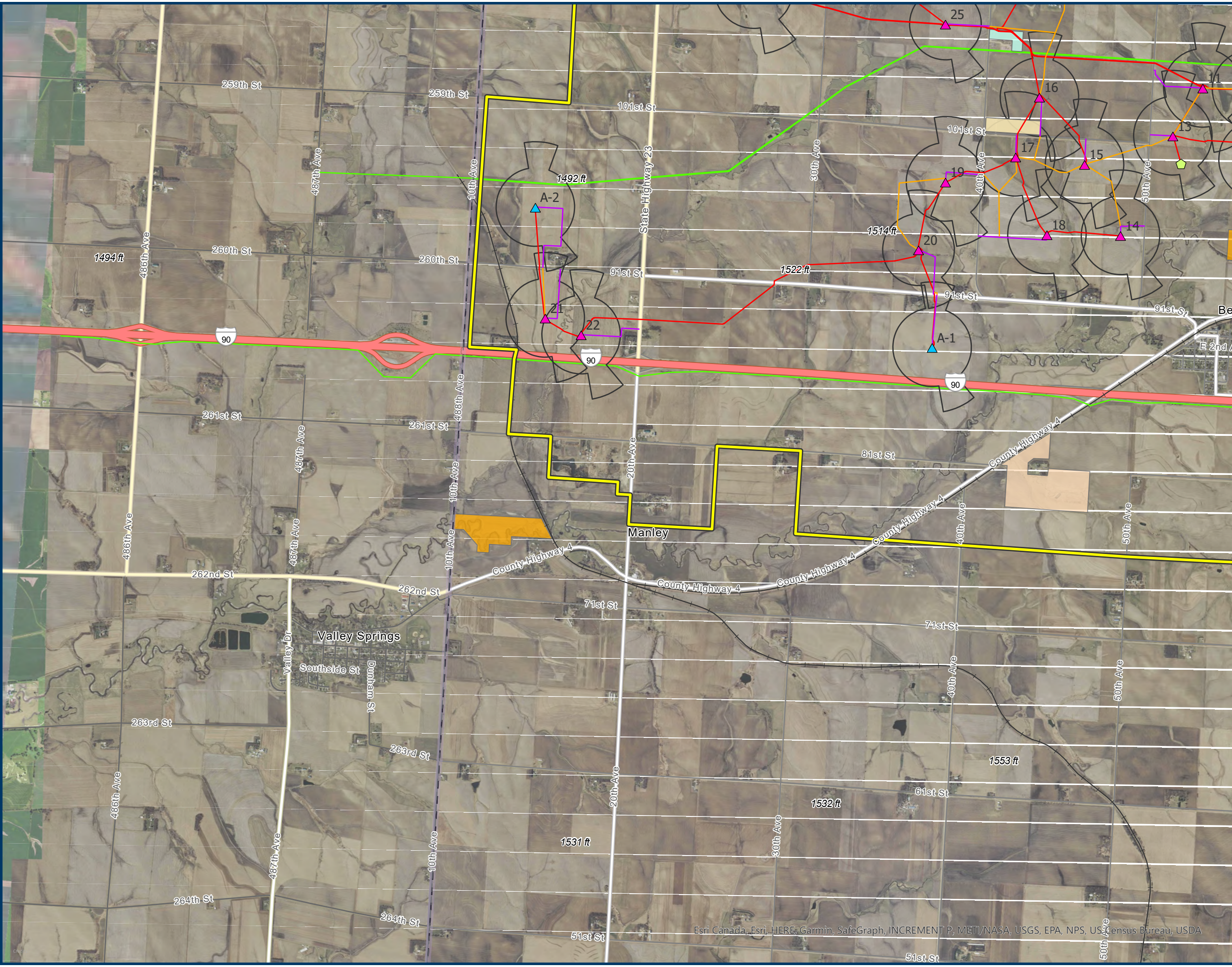
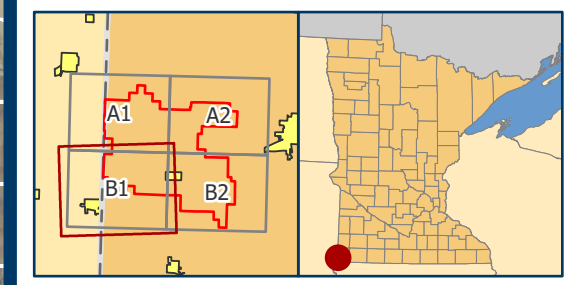
Map: B1

-  Site Boundary
-  Primary Turbine
-  Alternate Turbine
-  MET Tower
-  O&M and Project Substation
-  Laydown Yard
-  Access Road
-  Crane Path
-  Collection Line
-  3x5 Turbine Setback
-  Existing Transmission
-  RIM Easement
-  Wildlife Management Area

Corrected April 2021













Scale: 1:35,000

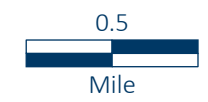


Map 3 Site Constraints Detail
Walleye Wind ER

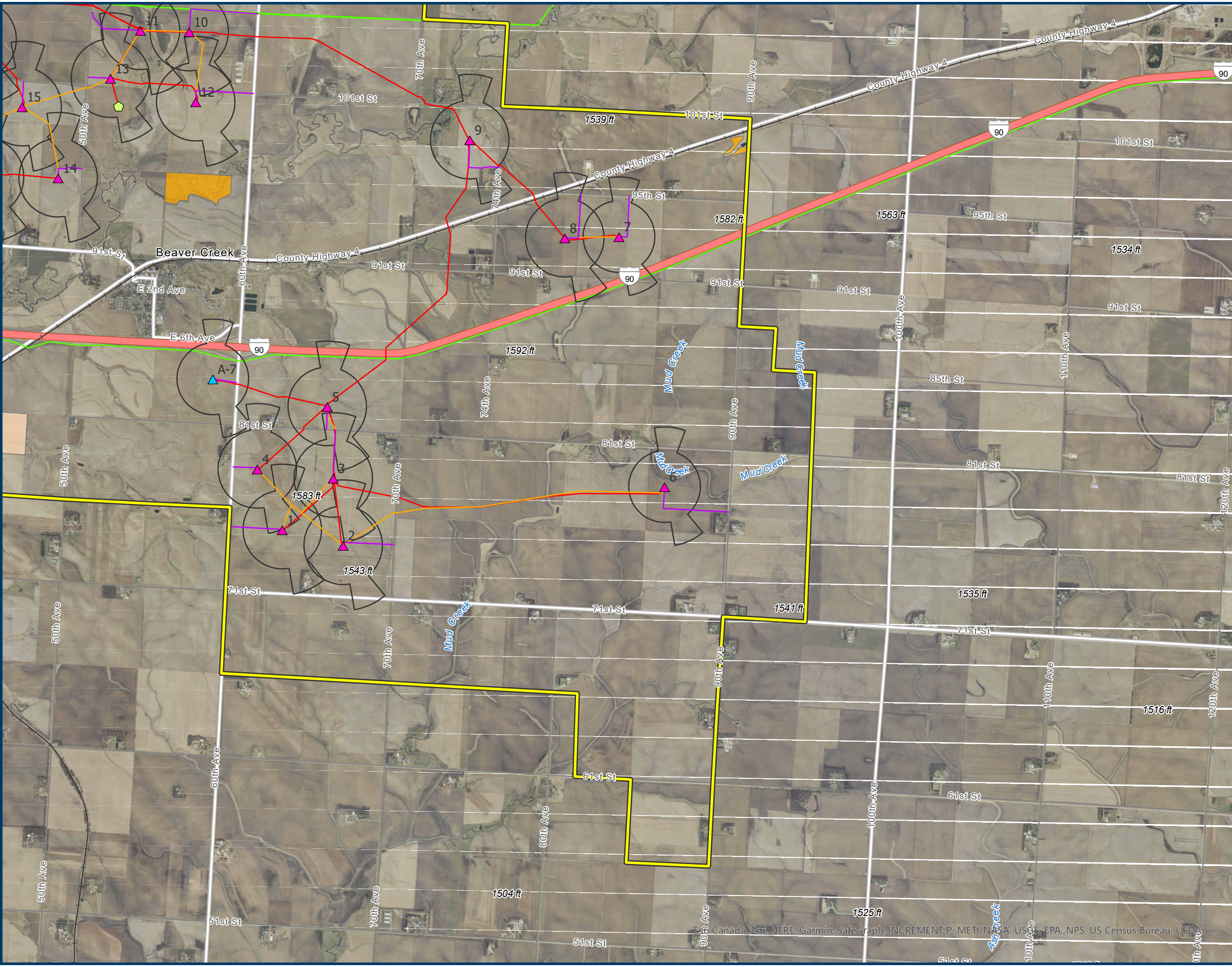
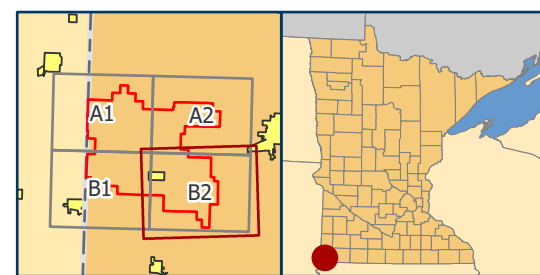
Map: B2

-  Site Boundary
-  Primary Turbine
-  Alternate Turbine
-  MET Tower
-  Access Road
-  Crane Path
-  Collection Line
-  3x5 Turbine Setback
-  Existing Transmission
-  RIM Easement
-  Wildlife Management Area

Corrected April 2021



Scale: 1:35,000



Esri, Canada, Esri, HERE, Garmin, SafeGraph, INCREMENT P, METI/NASA, USGS, EPA, NPS, US Census Bureau, USDA