

From: [Nathaniel Anderson](#)
To: [Johnson, Emily \(She/Her/Hers\) \(PUC\)](#)
Cc: [meyerj](#); [Josh Carlson](#)
Subject: Iron Range -St. Louis County - Arrowhead 345 kV Transmission Project CN-25-111 Comment
Date: Friday, February 20, 2026 3:58:45 PM
Attachments: [Proposed MP Power Line Map.pdf](#)

You don't often get email from andersonn2@stlouiscountymn.gov. [Learn why this is important](#)

This message may be from an external email source.

Do not select links or open attachments unless verified. Report all suspicious emails to Minnesota IT Services Security Operations Center.

Hi Emily,

I am submitting a comment on behalf of the St. Louis County Land and Minerals Department for the Iron Range -St. Louis County - Arrowhead 345 kV Transmission Project. The Land and Minerals Department manages tax forfeit and certain county fee owned lands in St. Louis County. The proposed route for this project crosses significant stretches of our land base. Some of the land we manage was acquired with Outdoor Heritage Funds through a grant awarded by the Lessard-Sams Outdoor Heritage Council. Due to that funding source, these lands have deed restrictions limiting our ability to place further encumbrances upon the land.

The proposed route for this transmission line passes through some of these lands southeast of Brookston, south of Highway 2 and north of the St. Louis River. We would be unable to grant easements across this land without review and approval of the council.

The attached map shows where the proposed line crosses these lands.

Nate Anderson

Deputy Director

Land and Minerals Department

5713 Old Miller Trunk Hwy

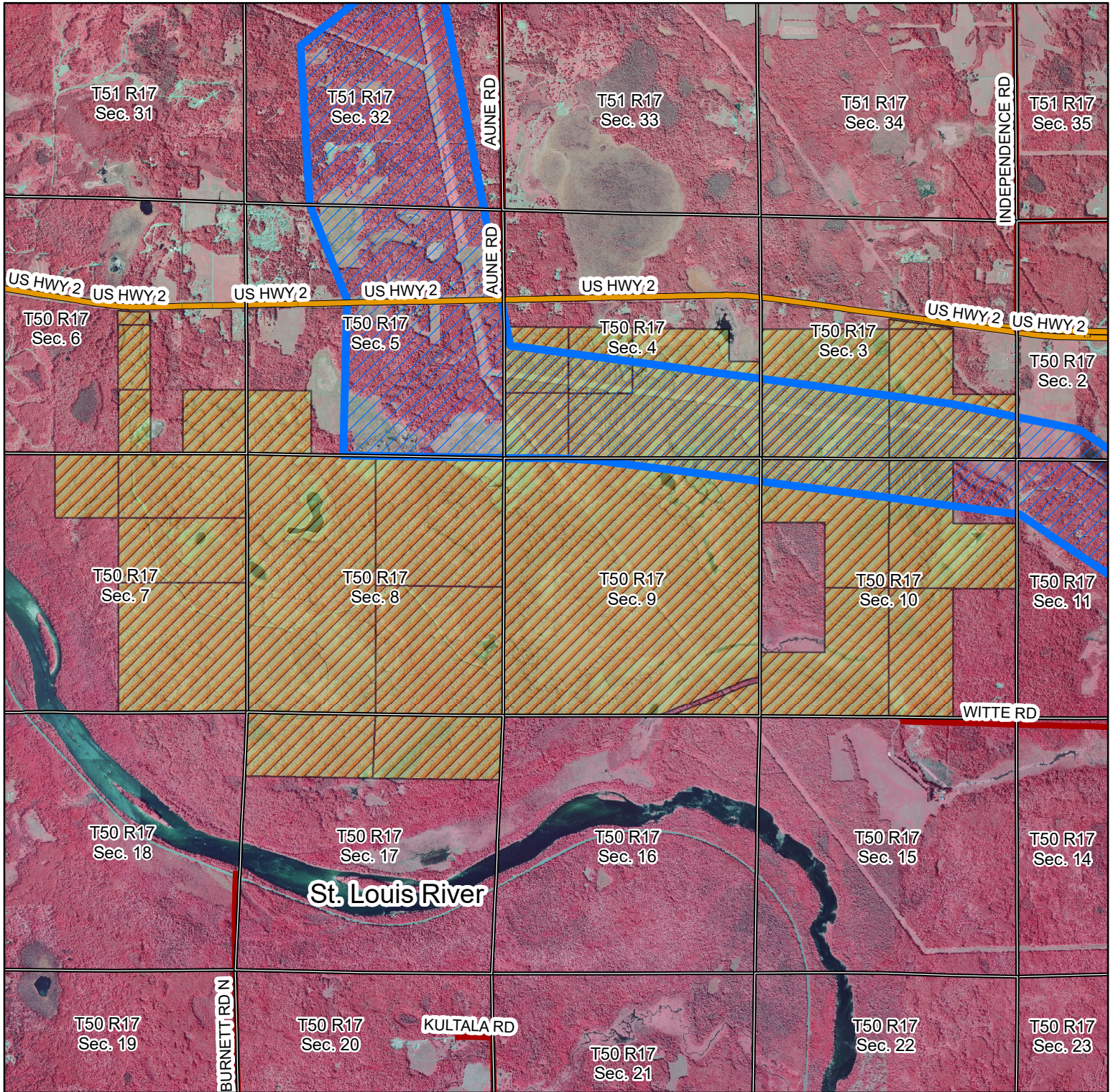
Duluth MN, 55811

Office: 218-625-3711

andersonn2@stlouiscountymn.gov



St. Louis County Proposed Power Line Location Map



Prepared By: Nate Anderson
 Map Created: 2-19-2026
 TRS: 501709
 Disclaimer:
 This is a compilation of records as they appear in the Saint Louis County Offices affecting the area shown. This drawing is to be used only for reference purposes and the County is not responsible for any inaccuracies herein contained.

0 1 Miles

Legend

- Proposed Power Line Route
- OHF Acquired Lands

