

Proposed Pipeline - Sandpiper	Milepost - Sandpiper	Tract Boundary
Existing Enbridge Pipelines	Potential Block Valve	Facility Boundary
Foreign Pipes	Environmental Survey Area (ESA)	Previously Sited Facility Boundary
Transmission Lines		Section Lines
SPREAD BREAK		

500 250 0 500 1,000 Feet

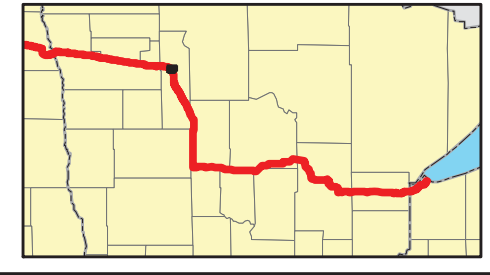
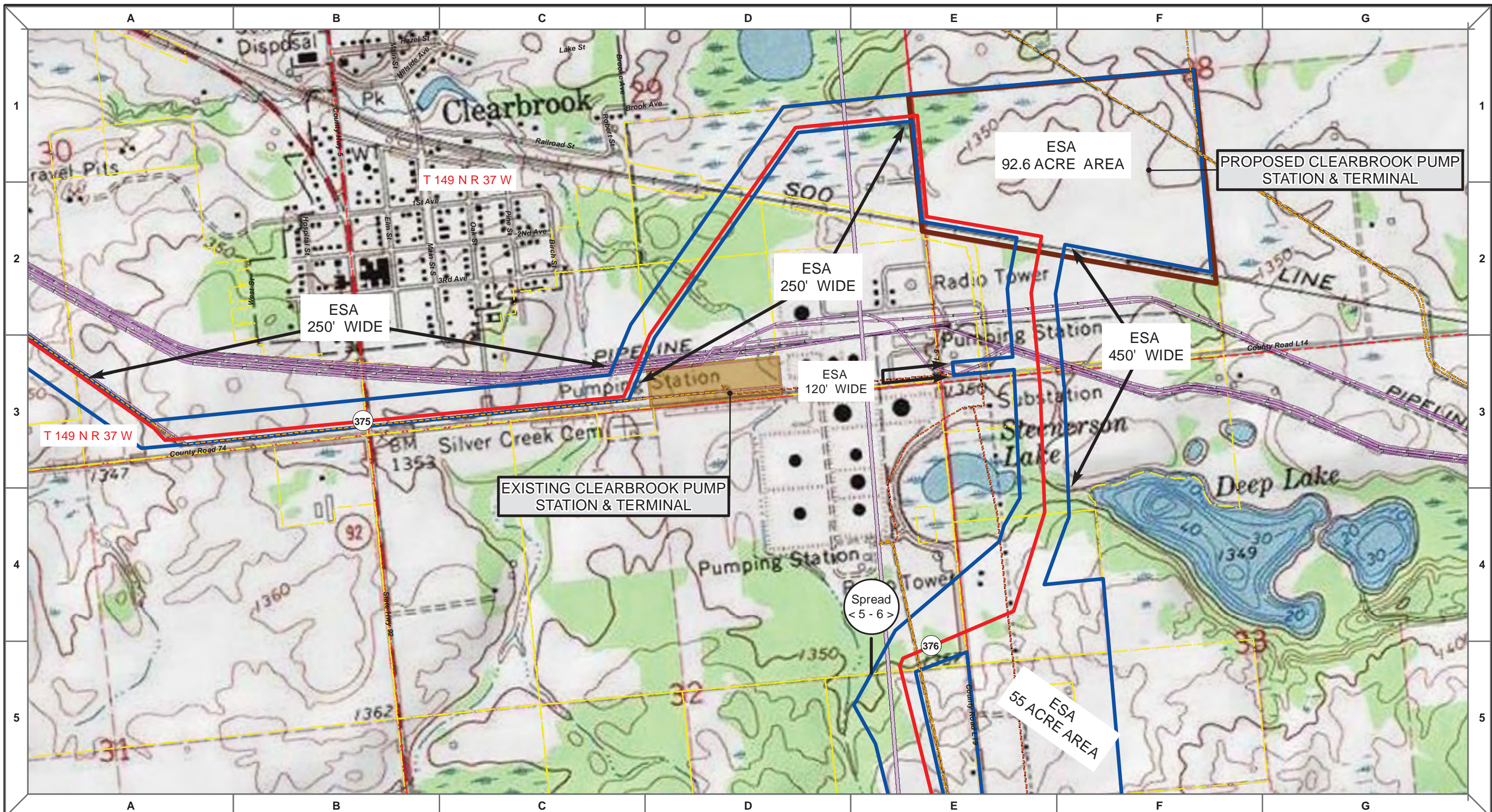
MLB	DATE	REV NO.	DESCRIPTION
	10/10/13	0	PUC Submittal

**ENBRIDGE PIPELINES (NORTH DAKOTA) LLC**

**PROPOSED SANDPIPER PIPELINE PROJECT  
ROUTE MAP  
Clearwater County, MN**

DRAWN: <b>MLB</b>	CHECKED: <b>--</b>
DATE: <b>Oct 18, 2013</b>	SCALE: <b>AS SHOWN</b>

Spread:5-6 Map: 33 of 128



Proposed Pipeline - Sandpiper	Milepost - Sandpiper	Tract Boundary
Existing Enbridge Pipelines	Potential Block Valve	Facility Boundary
Foreign Pipes	Environmental Survey Area (ESA)	Previously Sited Facility Boundary
Transmission Lines		Section Lines
SPREAD BREAK		

500 250 0 500 1,000 Feet

MLB	DATE	REV NO.	DESCRIPTION
	10/10/13	0	PUC Submittal

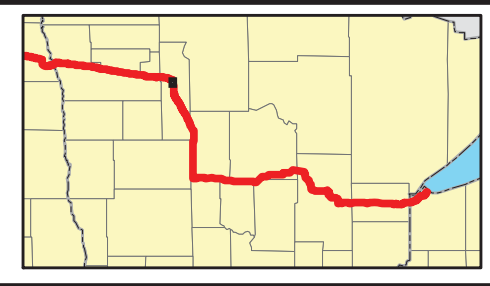
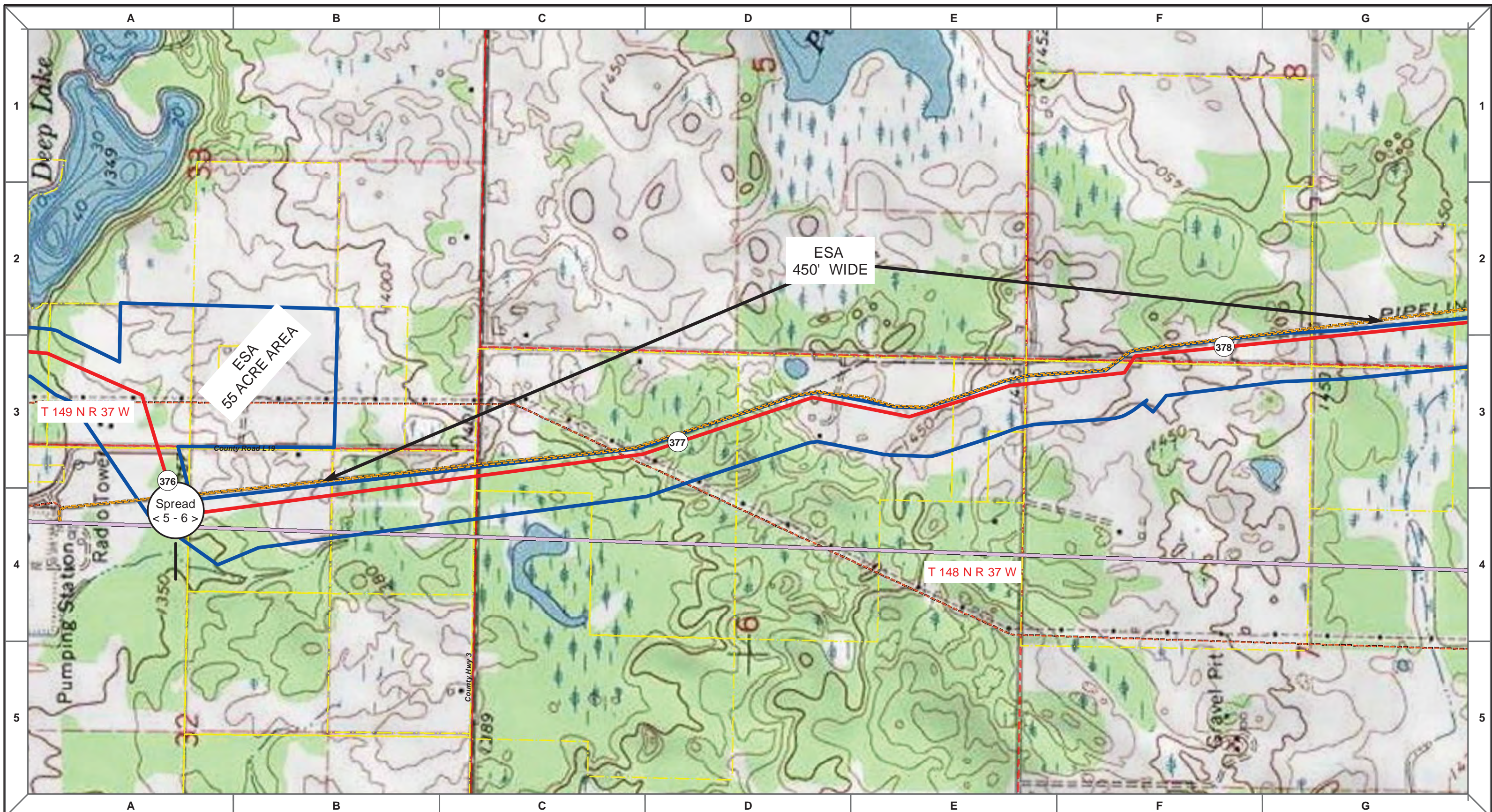
**ENBRIDGE PIPELINES (NORTH DAKOTA) LLC**

**PROPOSED SANDPIPER PIPELINE PROJECT**  
**ROUTE MAP**  
**Clearwater County, MN**

DRAWN: MLB	CHECKED: --
DATE: Oct 18, 2013	SCALE: AS SHOWN

Spread:5-6 Map: 33 of 128





Proposed Pipeline - Sandpiper	Milepost - Sandpiper	Tract Boundary
Existing Enbridge Pipelines	Potential Block Valve	Facility Boundary
Foreign Pipes	Environmental Survey Area (ESA)	Previously Sited Facility Boundary
Transmission Lines		Section Lines
SPREAD BREAK		

500 250 0 500 1,000 Feet

MLB	DATE	REV NO.	DESCRIPTION
	10/10/13	0	PUC Submittal

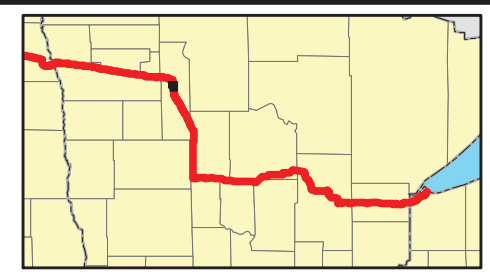
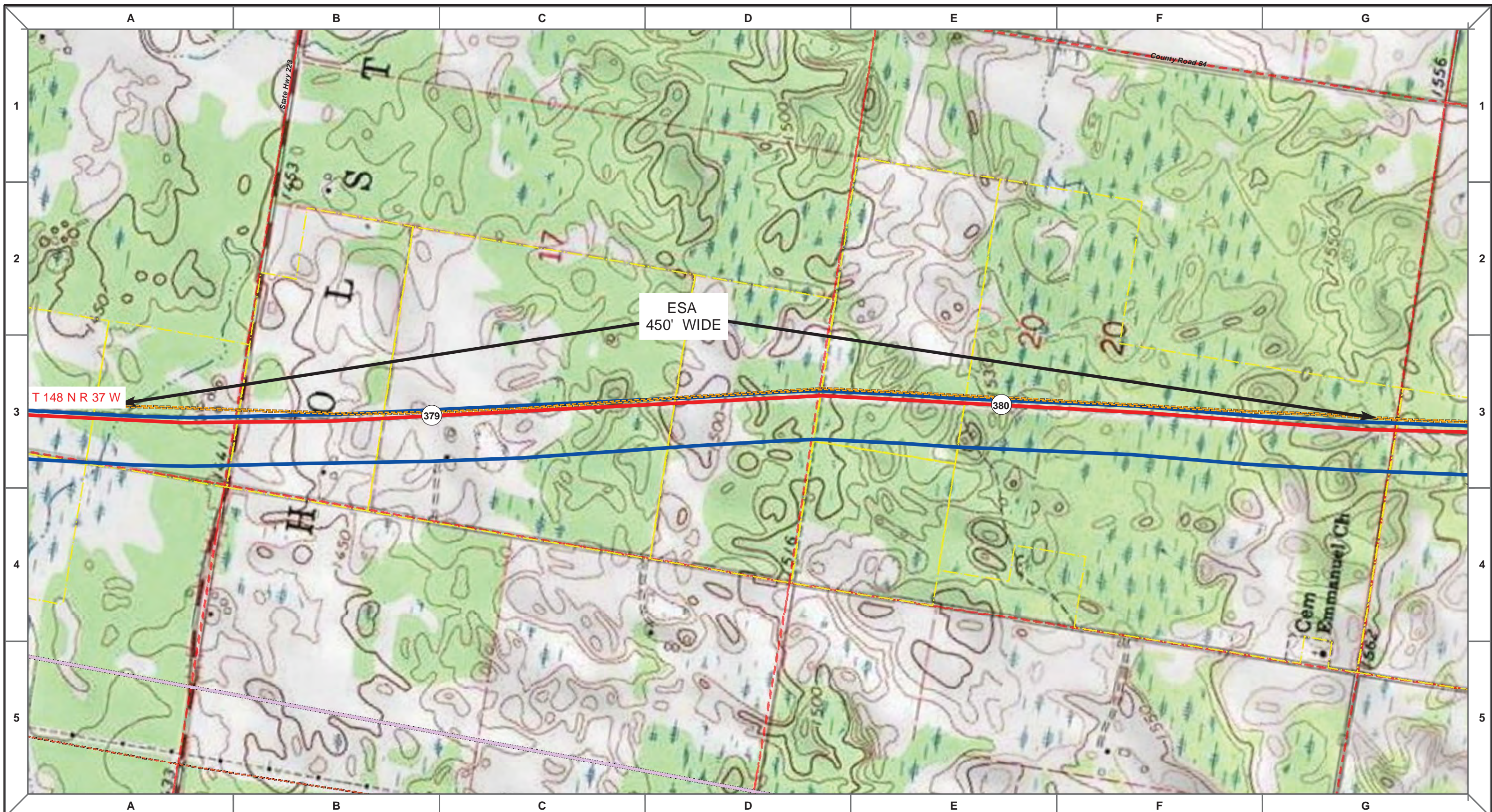
**ENBRIDGE PIPELINES (NORTH DAKOTA) LLC**

**PROPOSED SANDPIPER PIPELINE PROJECT**  
**ROUTE MAP**  
 Clearwater County, MN

<small>DRAWN:</small> MLB	<small>CHECKED:</small> --
<small>DATE:</small> Oct 18, 2013	<small>SCALE:</small> AS SHOWN

Spread:6
Map: 34 of 128





Proposed Pipeline - Sandpiper	Milepost - Sandpiper	Tract Boundary
Existing Enbridge Pipelines	Potential Block Valve	Facility Boundary
Foreign Pipes	Environmental Survey Area (ESA)	Previously Sited Facility Boundary
Transmission Lines		Section Lines
SPREAD BREAK		

500 250 0 500 1,000 Feet

MLB	DATE	REV NO.	DESCRIPTION
	10/10/13	0	PUC Submittal

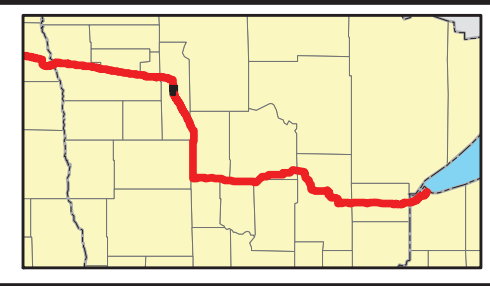
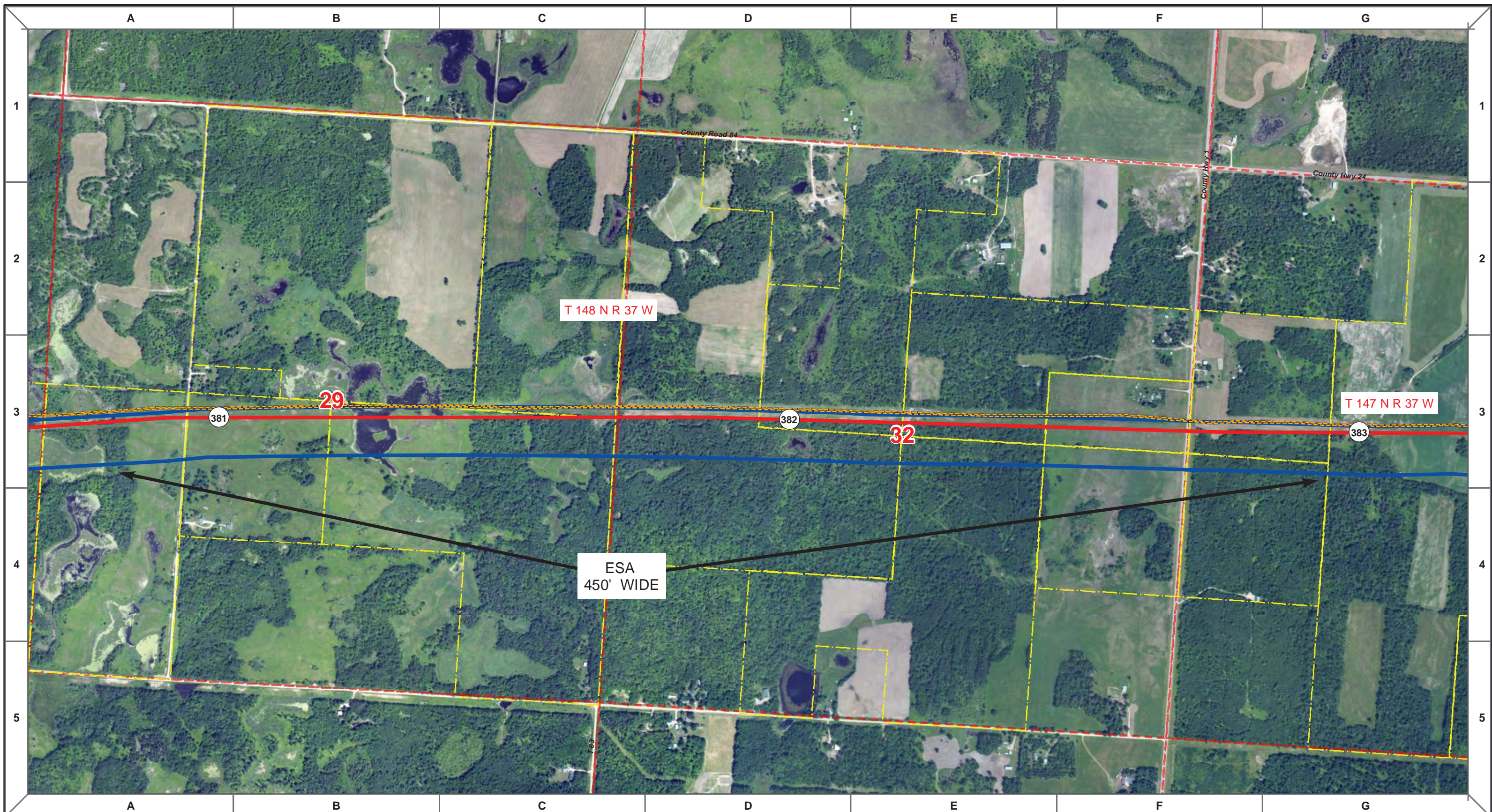
**ENBRIDGE PIPELINES (NORTH DAKOTA) LLC**

**PROPOSED SANDPIPER PIPELINE PROJECT**  
**ROUTE MAP**  
 Clearwater County, MN

DRAWN: MLB	CHECKED: --
DATE: Oct 18, 2013	SCALE: AS SHOWN

Spread:6 Map: 35 of 128





Proposed Pipeline - Sandpiper	Milepost - Sandpiper	Tract Boundary
Existing Enbridge Pipelines	Potential Block Valve	Facility Boundary
Foreign Pipes	Environmental Survey Area (ESA)	Previously Sited Facility Boundary
Transmission Lines		Section Lines
SPREAD BREAK		

500 250 0 500 1,000 Feet

MLB		10/10/13	0					
DRAWN	CHECKED	APPROVED	DATE	REV NO.	DESCRIPTION			

**ENBRIDGE PIPELINES (NORTH DAKOTA) LLC**

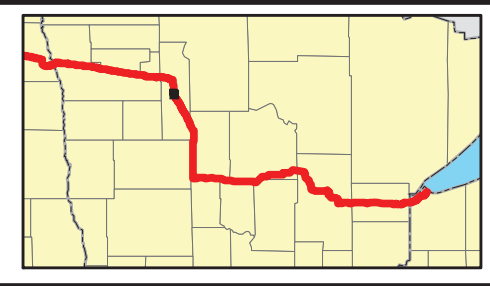
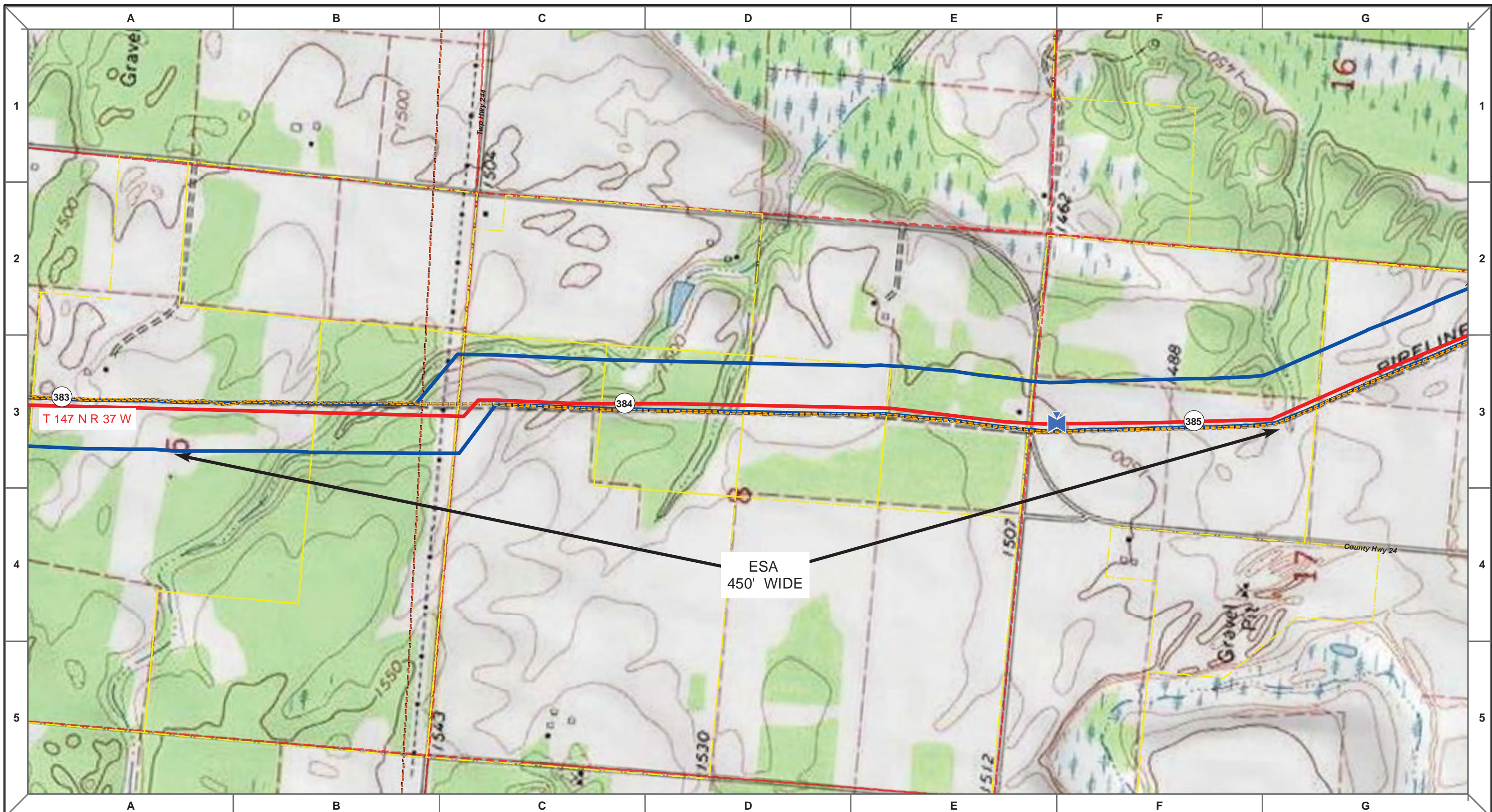
**PROPOSED SANDPIPER PIPELINE PROJECT**  
**ROUTE MAP**  
**Clearwater County, MN**

<small>DRAWN:</small> MLB	<small>CHECKED:</small> --
<small>DATE:</small> Oct 18, 2013	<small>SCALE:</small> AS SHOWN

Spread:6 Map: 36 of 128







Proposed Pipeline - Sandpiper	Milepost - Sandpiper	Tract Boundary
Existing Enbridge Pipelines	Potential Block Valve	Facility Boundary
Foreign Pipes	Environmental Survey Area (ESA)	Previously Sited Facility Boundary
Transmission Lines		Section Lines
SPREAD BREAK		

500 250 0 500 1,000 Feet

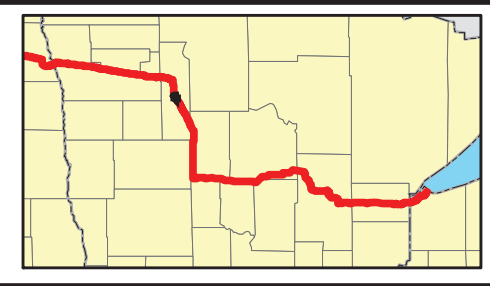
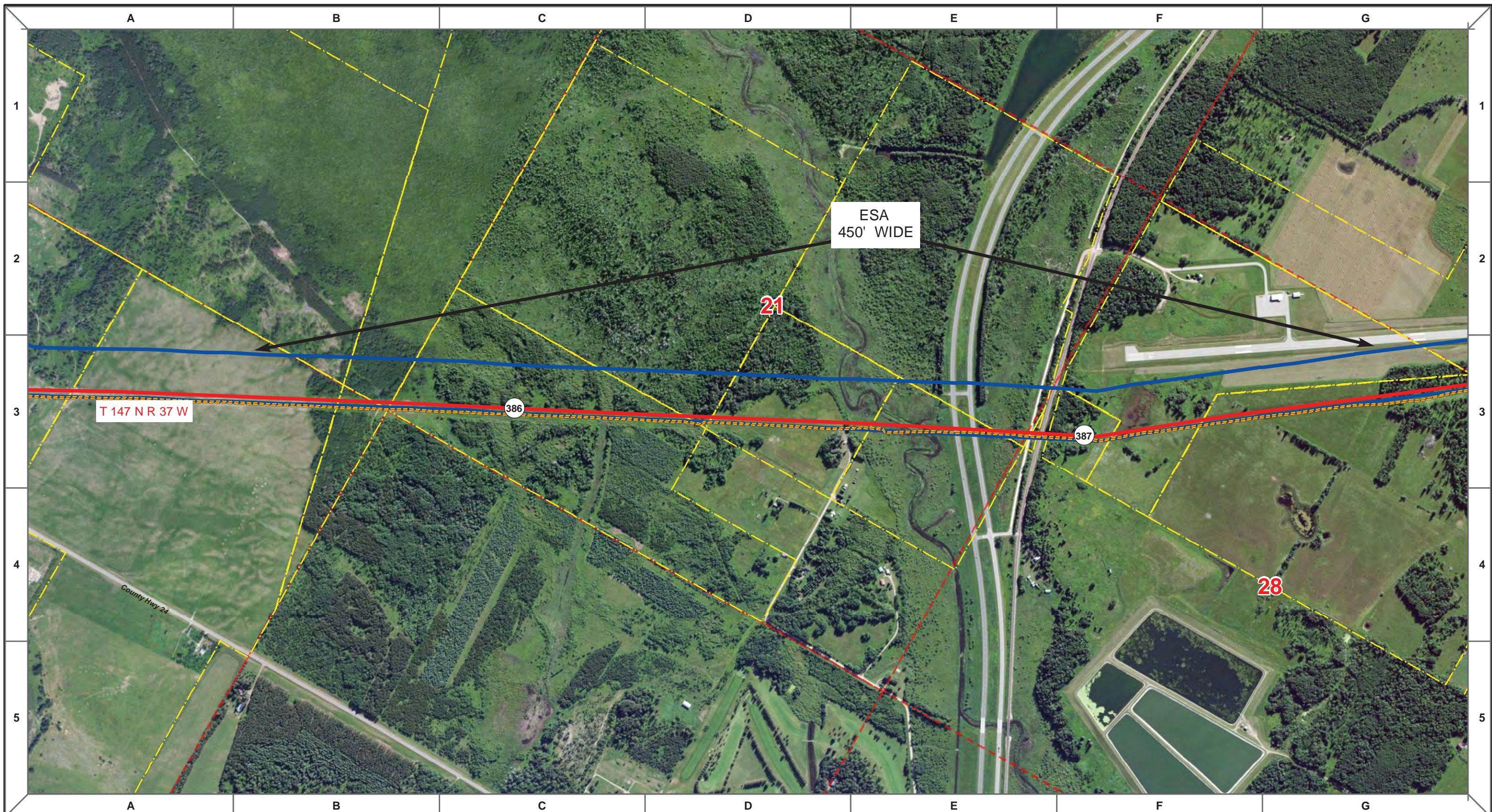
MLB	DATE	REV NO.	DESCRIPTION
	10/10/13	0	PUC Submittal

**ENBRIDGE PIPELINES (NORTH DAKOTA) LLC**

**PROPOSED SANDPIPER PIPELINE PROJECT**  
**ROUTE MAP**  
**Clearwater County, MN**

DRAWN: <b>MLB</b>	CHECKED: <b>--</b>
DATE: <b>Oct 18, 2013</b>	SCALE: <b>AS SHOWN</b>

Spread:6 Map: 37 of 128



	Proposed Pipeline - Sandpiper		Milepost - Sandpiper		Tract Boundary
	Existing Enbridge Pipelines		Potential Block Valve		Facility Boundary
	Foreign Pipes		Environmental Survey Area (ESA)		Previously Sited Facility Boundary
	Transmission Lines				Section Lines
	SPREAD BREAK				

500 250 0 500 1,000 Feet

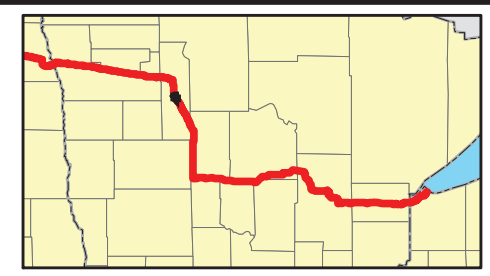
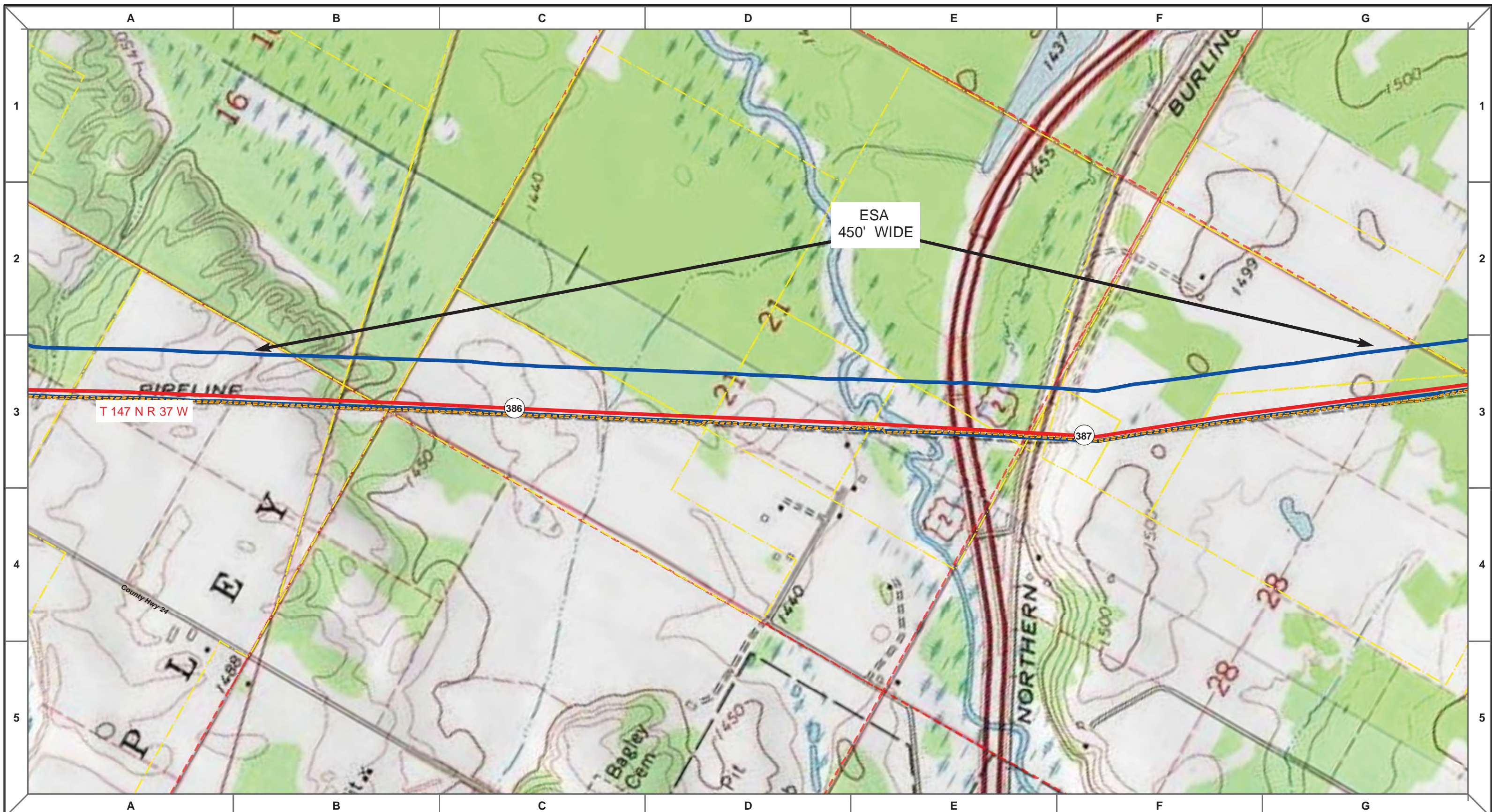
MLB	DATE	REV NO.	DESCRIPTION
	10/10/13	0	PUC Submittal

**ENBRIDGE PIPELINES (NORTH DAKOTA) LLC**

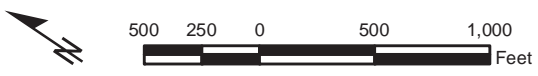
**PROPOSED SANDPIPER PIPELINE PROJECT**  
**ROUTE MAP**  
**Clearwater County, MN**

<small>DRAWN:</small> MLB	<small>CHECKED:</small> --
<small>DATE:</small> Oct 18, 2013	<small>SCALE:</small> AS SHOWN

Spread:6 Map: 38 of 128



- Proposed Pipeline - Sandpiper
- Existing Enbridge Pipelines
- - - Foreign Pipes
- - - Transmission Lines
- SPREAD BREAK
- 1 Milepost - Sandpiper
- ✕ Potential Block Valve
- Environmental Survey Area (ESA)
- Tract Boundary
- Facility Boundary
- Previously Sited Facility Boundary
- Section Lines



MLB			10/10/13	0				PUC Submittal	
DRAWN	CHECKED	APPROVED	DATE	REV NO.				DESCRIPTION	

**ENBRIDGE PIPELINES (NORTH DAKOTA) LLC**

**PROPOSED SANDPIPER PIPELINE PROJECT**  
**ROUTE MAP**  
**Clearwater County, MN**

DRAWN: <b>MLB</b>	CHECKED: <b>-</b>
DATE: <b>Oct 18, 2013</b>	SCALE: <b>AS SHOWN</b>

Spread:6
Map: 38 of 128