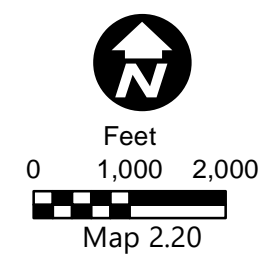
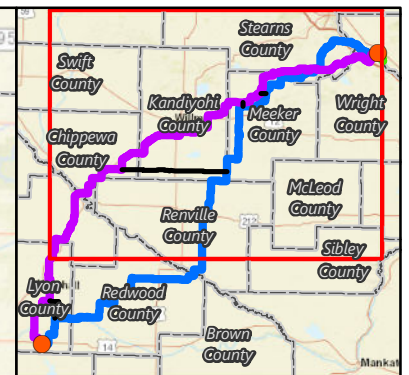
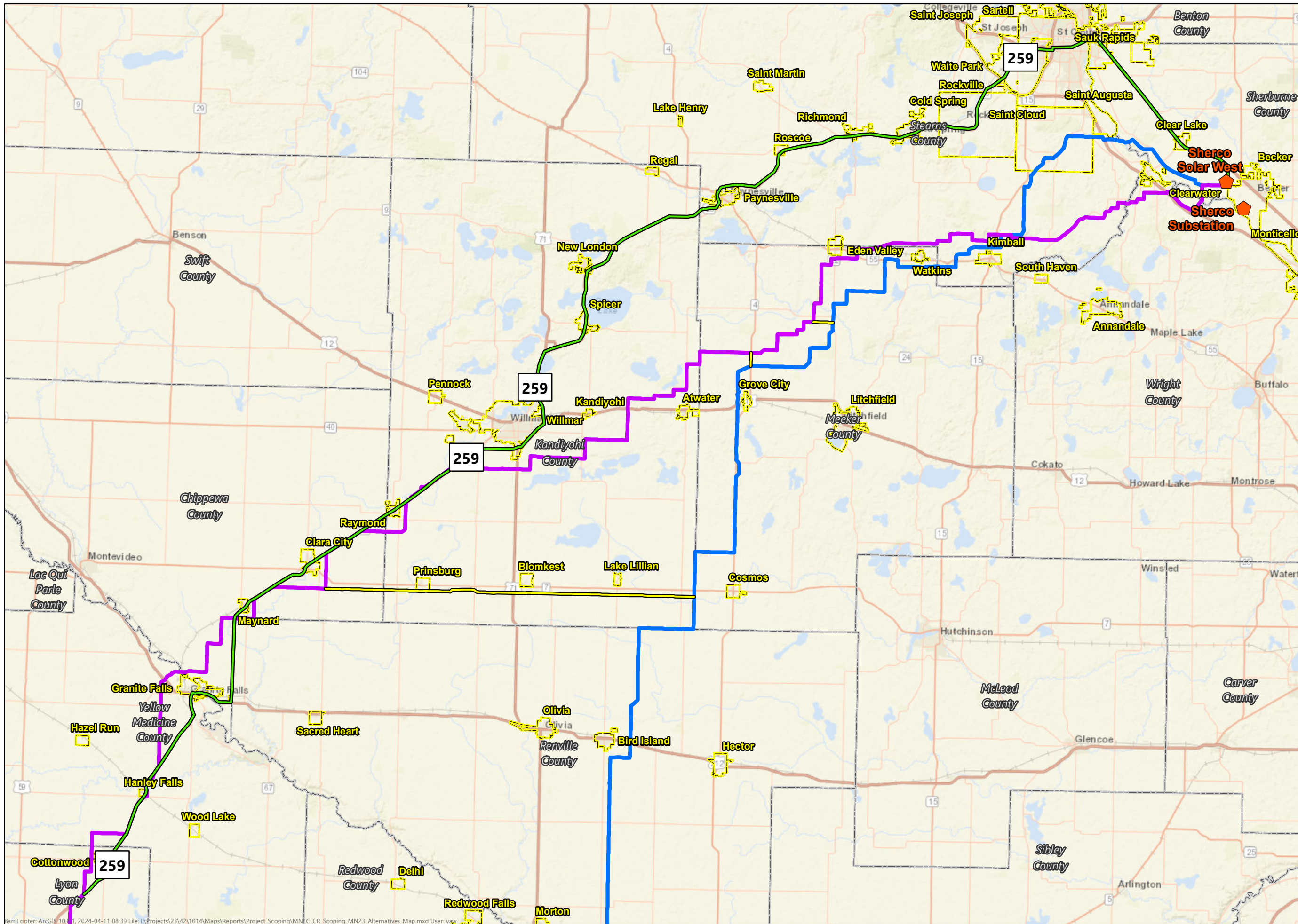


- Proposed Routes**
- Blue Route
 - Purple Route
 - Green Segment
 - Proposed Route Width
- Alternatives**
- Alignment
 - Route Connector
 - Route Segment
 - Alternative Width
 - Residence Location
 - Existing Substation
 - Existing Transmission Line
 - Municipal Boundary
 - PWI Waterway
 - PWI Basin
- Owner Type**
- Federal Land
 - State Land
 - Local Land

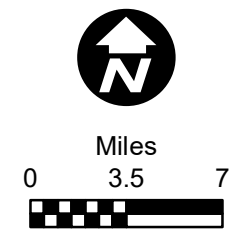


Map 2.20
GREEN SEGMENT
Scoping Alternatives
Minnesota Energy
Connection Project

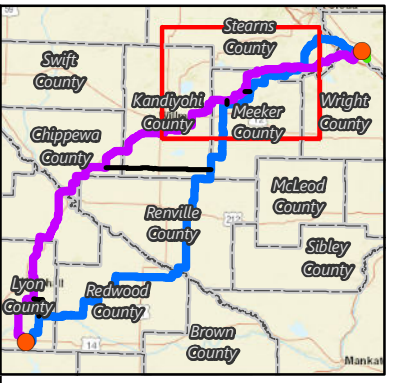
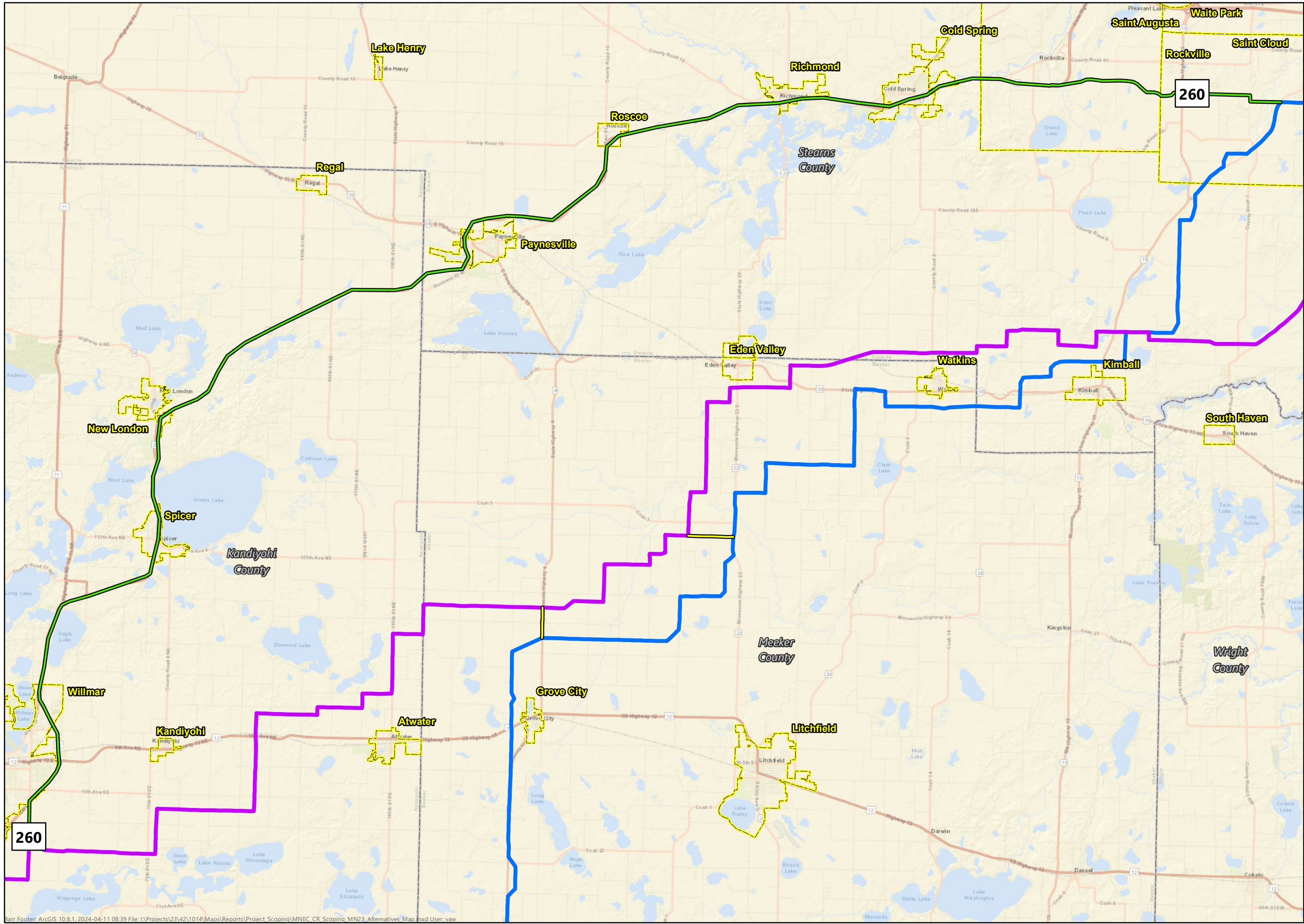
Imagery Source: USDA-FSA-APFO NAIP, 2023



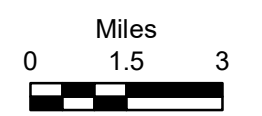
- Alternatives along MN23 (259 and 260)
- Blue Route
- Purple Route
- Route Connector
- ◆ Existing Substation
- Municipal Boundary selection



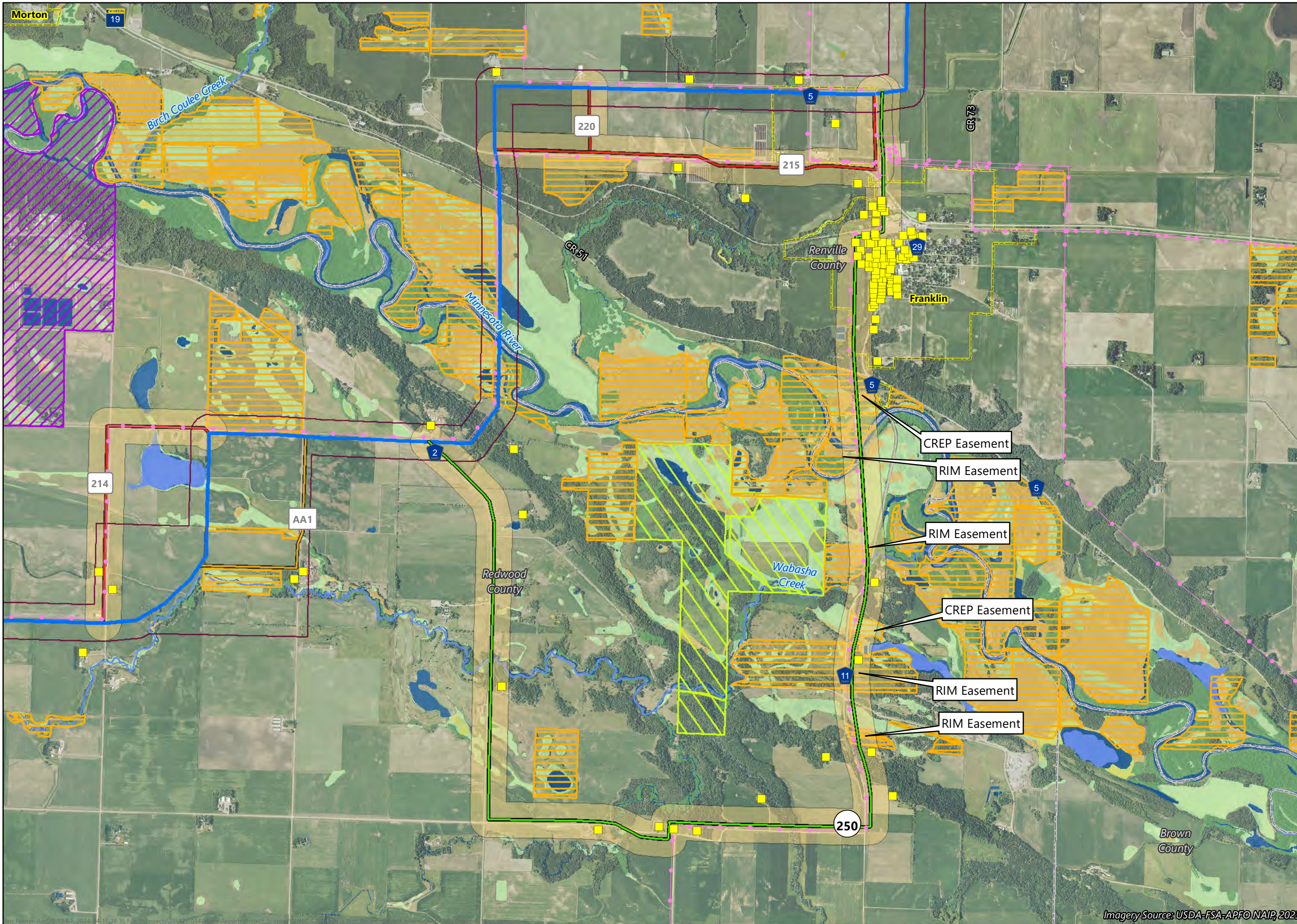
Map 3.1
**ALTERNATIVES PROPOSED
 ALONG MN23**
 Scoping Alternatives
 Minnesota Energy



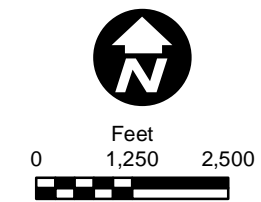
- Alternatives along MN23 (259 and 260)
- Blue Route
- Purple Route
- Route Connector
- Municipal Boundary selection



Map 3.2
**ALTERNATIVES PROPOSED
 ALONG MN23**
 Scoping Alternatives
 Minnesota Energy



- Proposed Routes**
- Blue Route
 - Proposed Route
- Alternatives**
- Not Recommended Alternative
 - Alignment
 - Route Segment
 - Alternative Width
 - Residence Location
 - Existing Transmission Line
 - Municipal Boundary
 - PWI Waterway
 - PWI Basin
- Owner Type**
- Federal Land
 - State Land
 - Private Land
- NWI Cowardin Class**
- Aquatic Bed/Nonpersistent Emergent
 - Emergent
 - Forested
 - Streambed (Intermittent)
 - Scrub-Shrub
 - Unconsolidated Bottom (Open Water)
 - Unconsolidated Shore (Banks & Sandbars)



Map 4

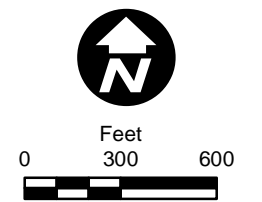
ROUTE SEGMENT 250
Scoping Alternatives
Minnesota Energy
Connection Project

Imagery Source: USDA-FSA-APFO NAIP, 2023



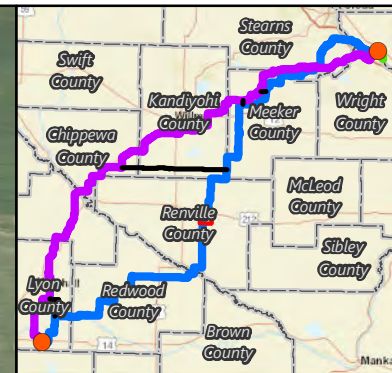
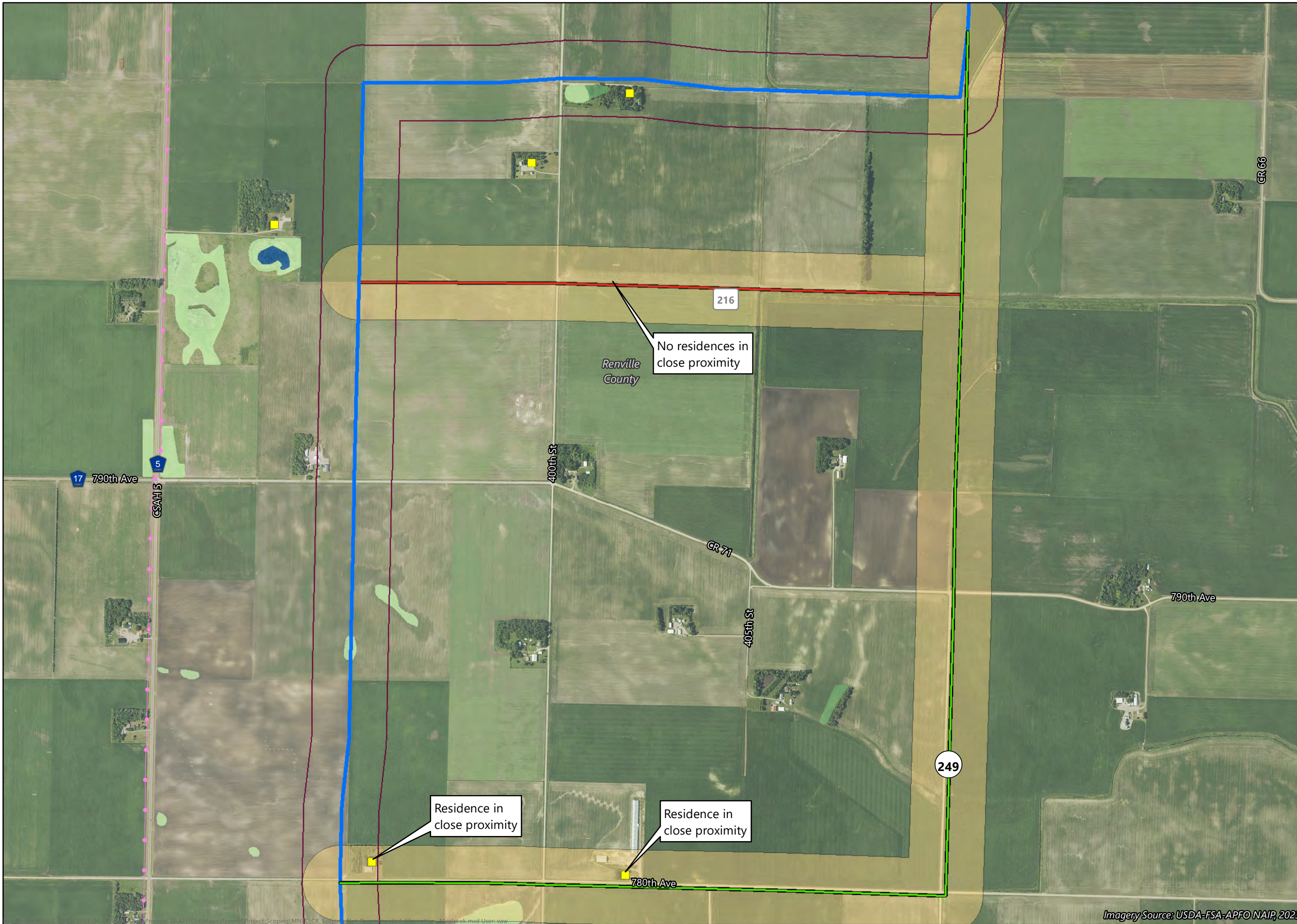
- Proposed Routes**
- Purple Route
 - Proposed Route
- Alternatives**
- Not Recommended Alternative
 - Route Segment
 - Alternative Width
 - Residence Location
 - Existing Transmission Line
 - Municipal Boundary
 - PWI Waterway
 - PWI Basin
- Owner Type**
- Private Land
- NWI Cowardin Class**
- Emergent
 - Forested
 - Unconsolidated Bottom (Open Water)

Residences in close proximity on both sides of the street

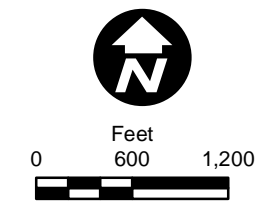


Map 5

ROUTE SEGMENT 251
 Scoping Alternatives
 Minnesota Energy
 Connection Project



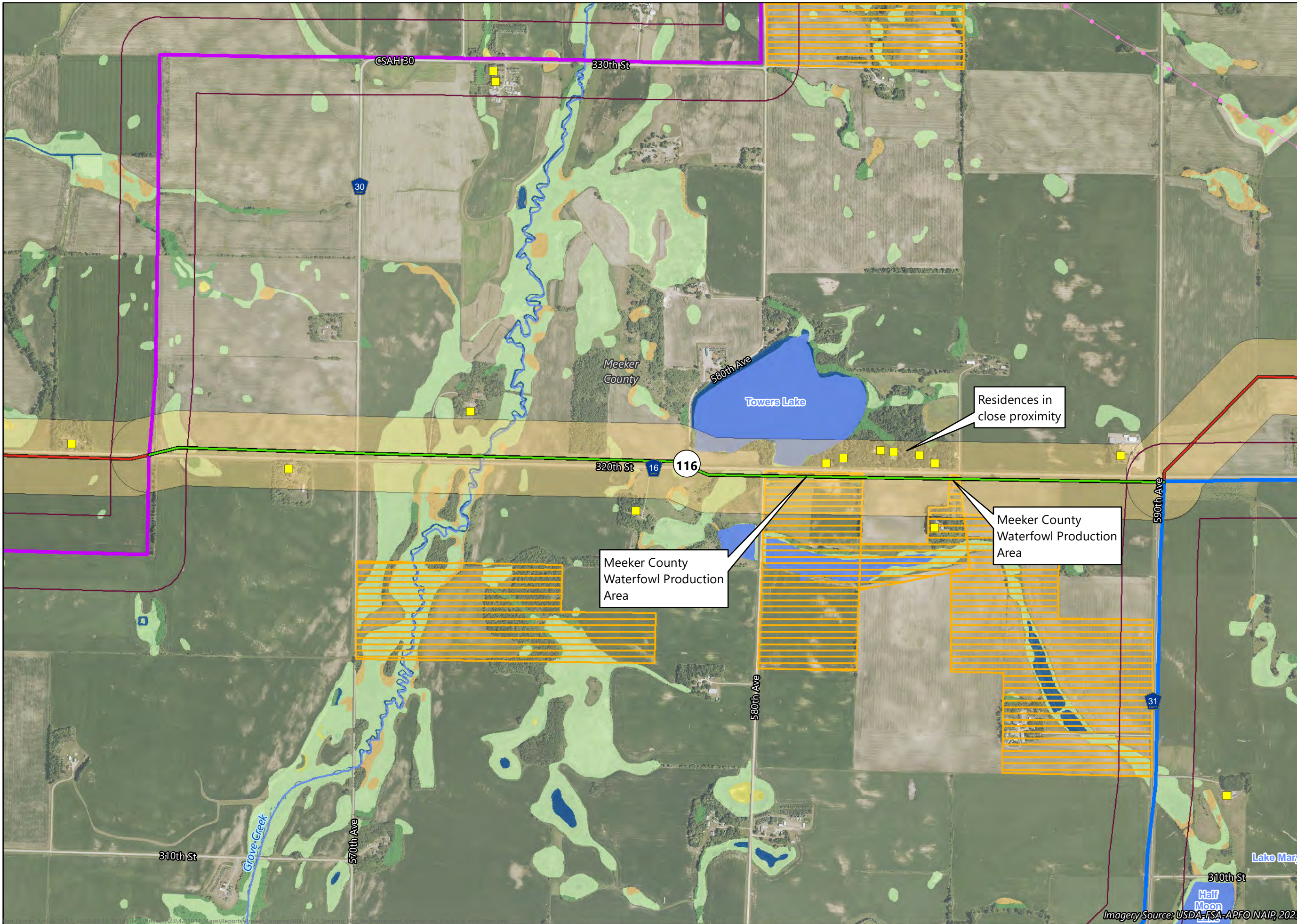
- Proposed Routes**
- Blue Route
 - Proposed Route
- Alternatives**
- Not Recommended Alternative
 - Route Segment
 - Alternative Width
 - Residence Location
 - Existing Transmission Line
 - PWI Waterway
 - PWI Basin
- NWI Cowardin Class**
- Emergent
 - Forested
 - Unconsolidated Bottom (Open Water)



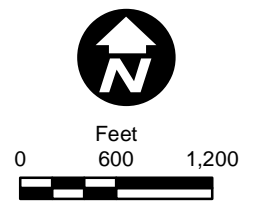
Map 6

ROUTE SEGMENT 249
 Scoping Alternatives
 Minnesota Energy
 Connection Project

Imagery Source: USDA-FSA-APFO NAIP, 2023



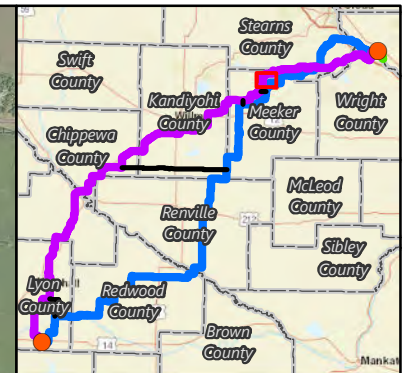
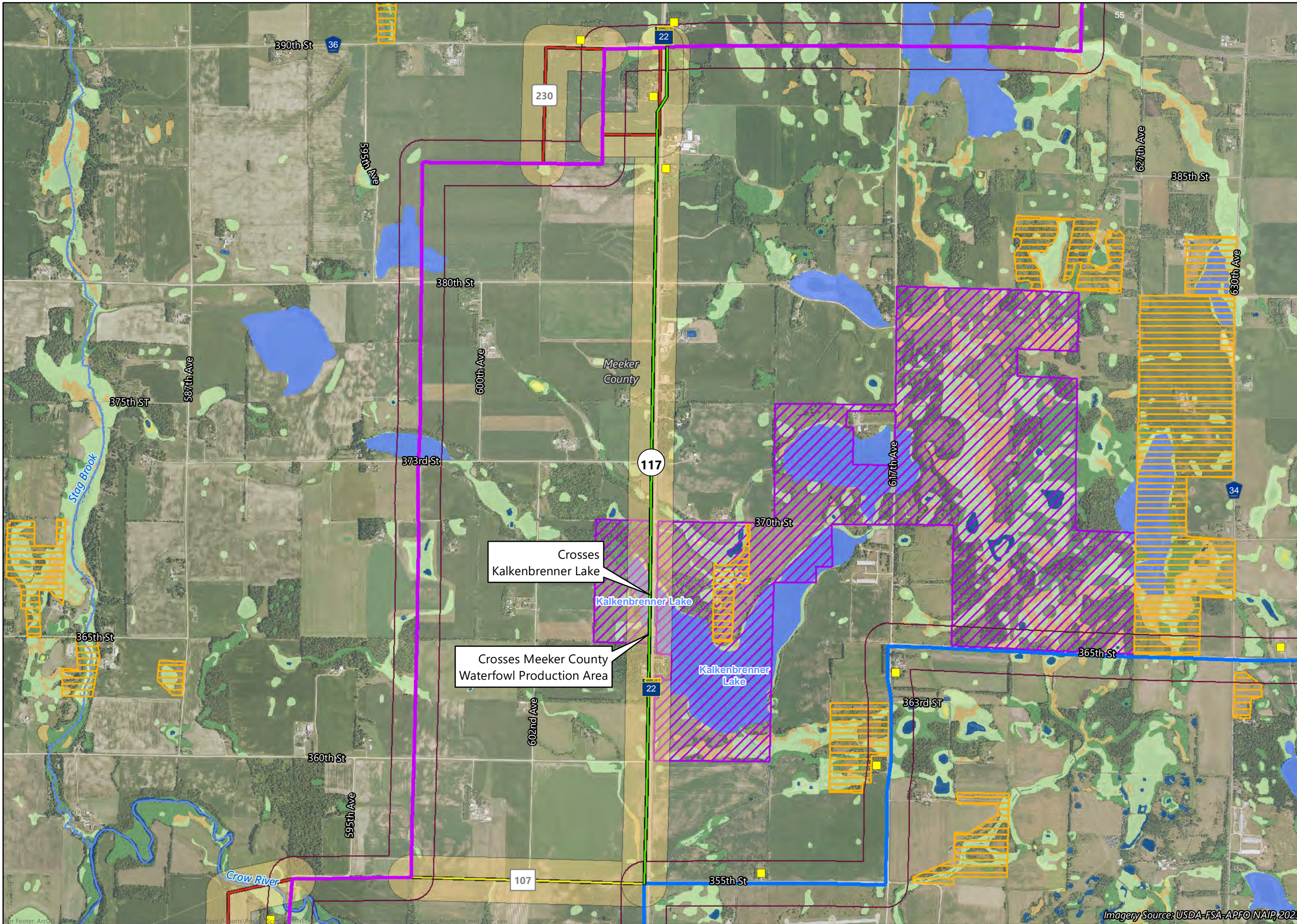
- Proposed Routes**
- Blue Route
 - Purple Route
 - Proposed Route
- Alternatives**
- Not Recommended Alternative
 - Route Connector
 - Route Segment
 - Alternative Width
 - Residence Location
 - Existing Transmission Line
 - PWI Waterway
 - PWI Basin
- Owner Type**
- Private Land
- NWI Cowardin Class**
- Aquatic Bed/Nonpersistent Emergent
 - Emergent
 - Forested
 - Scrub-Shrub
 - Unconsolidated Bottom (Open Water)



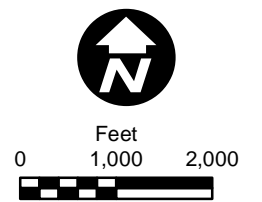
Map 7

ROUTE CONNECTOR 116
 Scoping Alternatives
 Minnesota Energy
 Connection Project

Imagery Source: USDA-FSA-APFO NAIP, 2023



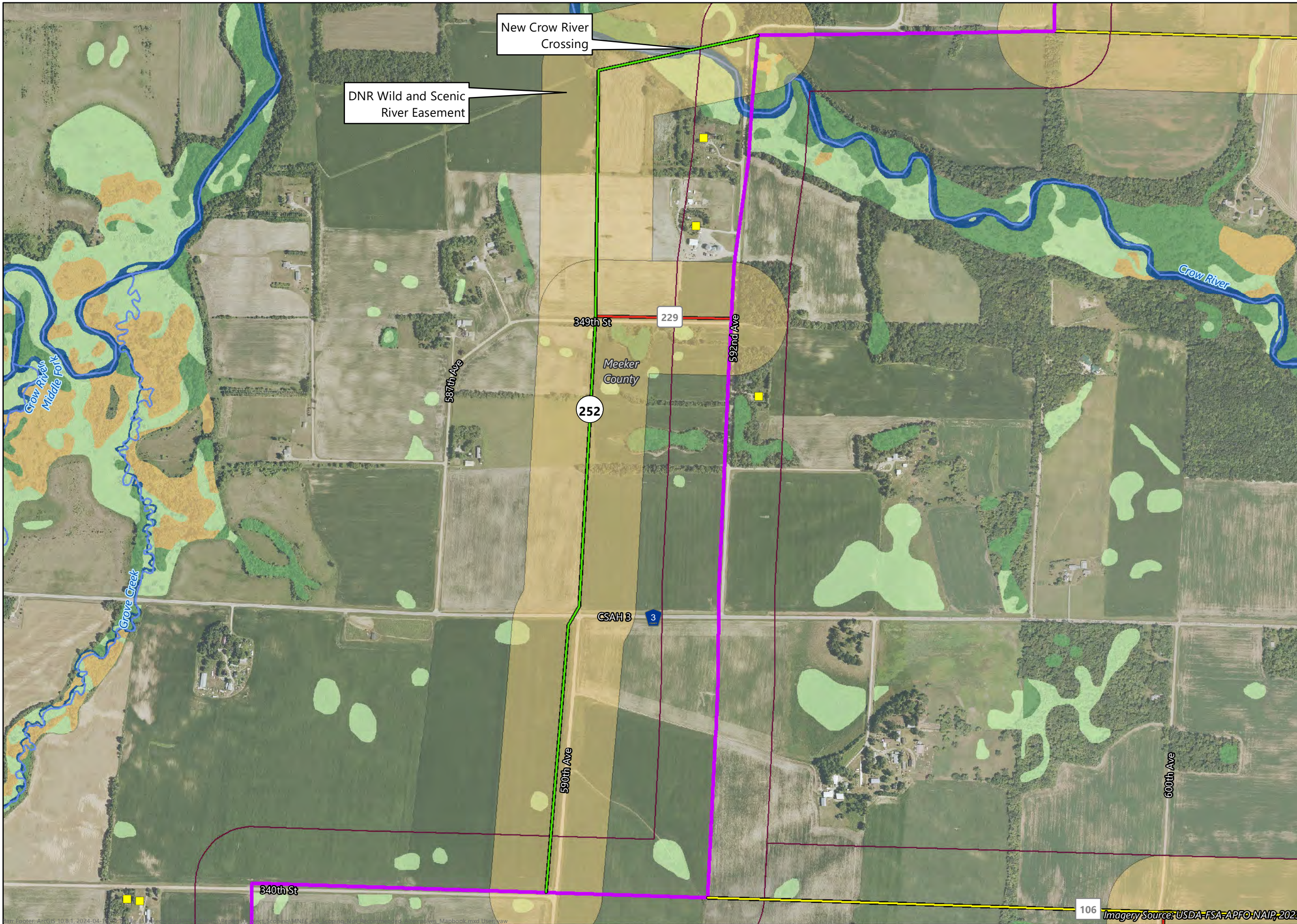
- Proposed Routes**
- Blue Route
 - Purple Route
 - Proposed Route
- Alternatives**
- Not Recommended Alternative
 - Route Connector
 - Route Segment
 - Alternative Width
 - Residence Location
 - PWI Waterway
 - PWI Basin
- Owner Type**
- Federal Land
 - Private Land
- NWI Cowardin Class**
- Aquatic Bed/Nonpersistent Emergent
 - Emergent
 - Forested
 - Streambed (Intermittent)
 - Scrub-Shrub
 - Unconsolidated Bottom (Open Water)



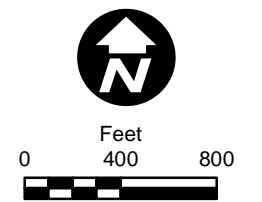
Map 8

ROUTE CONNECTOR 117
 Scoping Alternatives
 Minnesota Energy
 Connection Project

Imagery Source: USDA-FSA-APFO NAIP, 2023

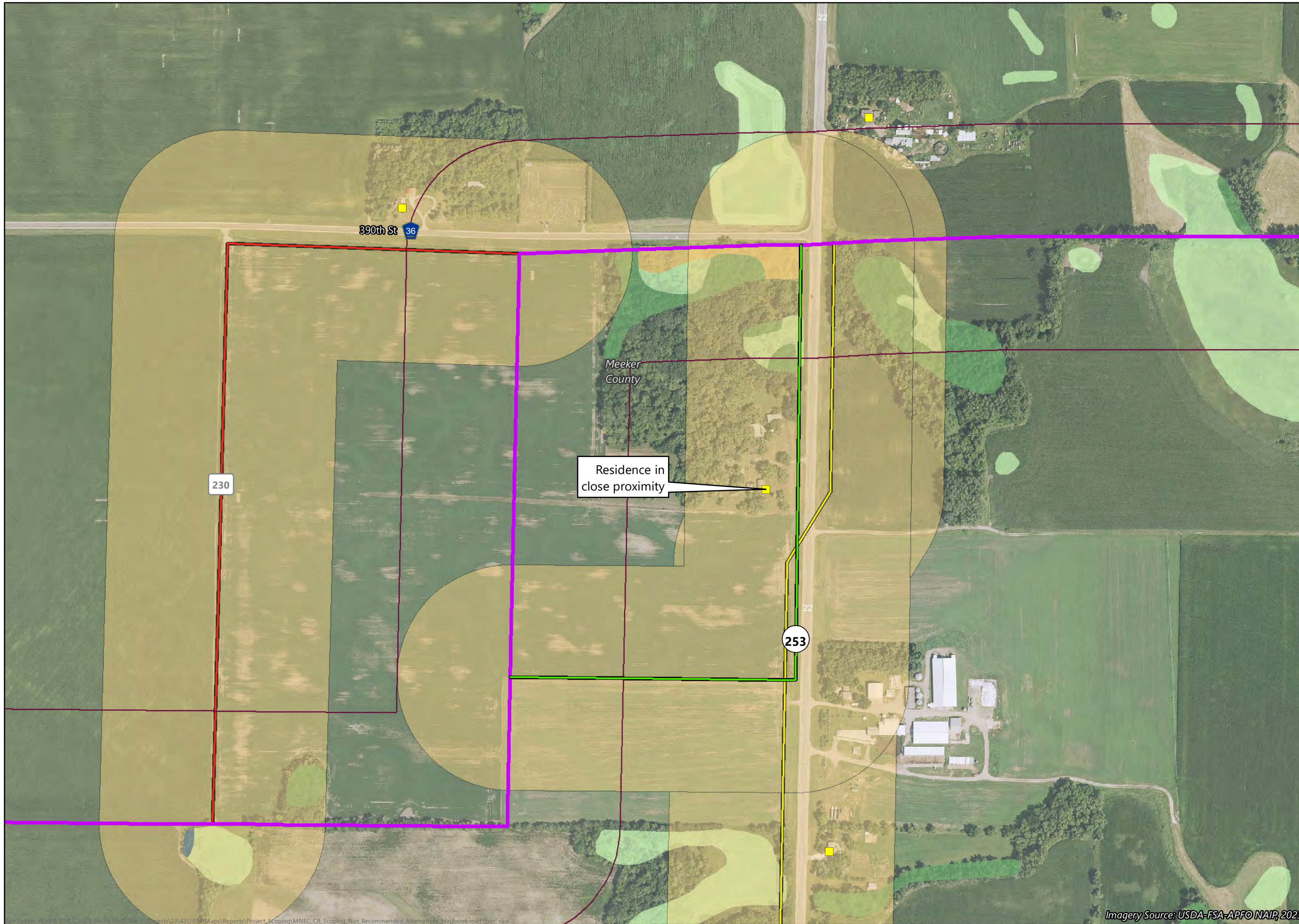


- Proposed Routes**
- Purple Route
 - Route Connector
 - Proposed Route
- Alternatives**
- Not Recommended Alternative
 - Route Connector
 - Route Segment
 - Alternative Width
 - Residence Location
 - PWI Waterway
 - PWI Basin
- NWI Cowardin Class**
- Emergent
 - Forested
 - Scrub-Shrub
 - Unconsolidated Bottom (Open Water)

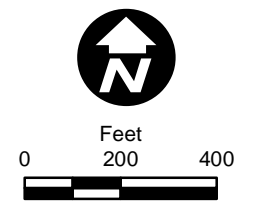


Map 9

ROUTE SEGMENT 252
 Scoping Alternatives
 Minnesota Energy
 Connection Project



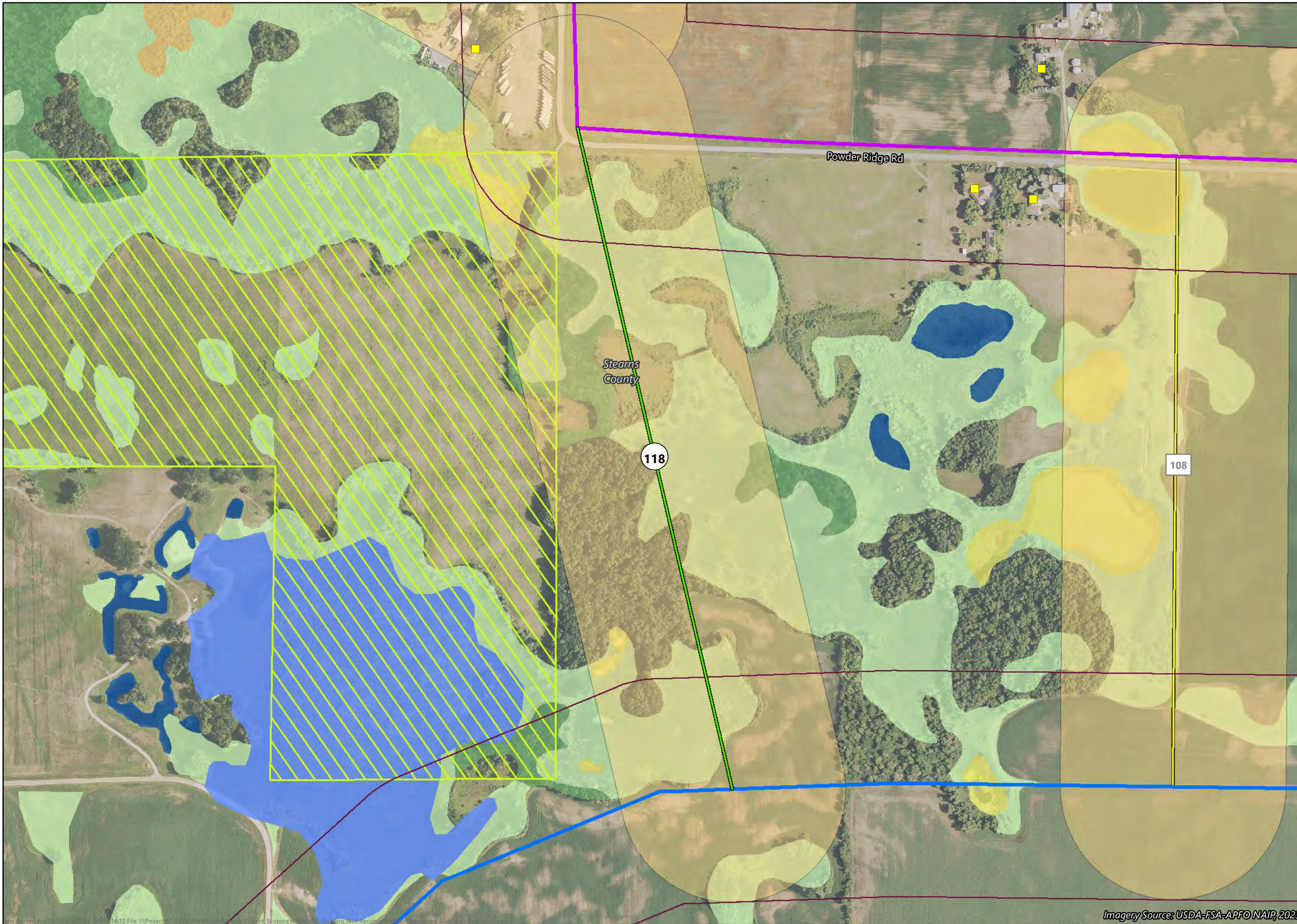
- Proposed Routes**
- Purple Route
 - Proposed Route
- Alternatives**
- Not Recommended Alternative
 - Route Connector
 - Route Segment
 - Alternative Width
 - Residence Location
 - PWI Waterway
 - PWI Basin
- NWI Cowardin Class**
- Emergent
 - Forested
 - Scrub-Shrub
 - Unconsolidated Bottom (Open Water)



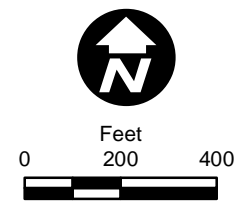
Map 10

ROUTE SEGMENT 253
 Scoping Alternatives
 Minnesota Energy
 Connection Project

Imagery Source: USDA-FSA-APFO NAIP, 2023



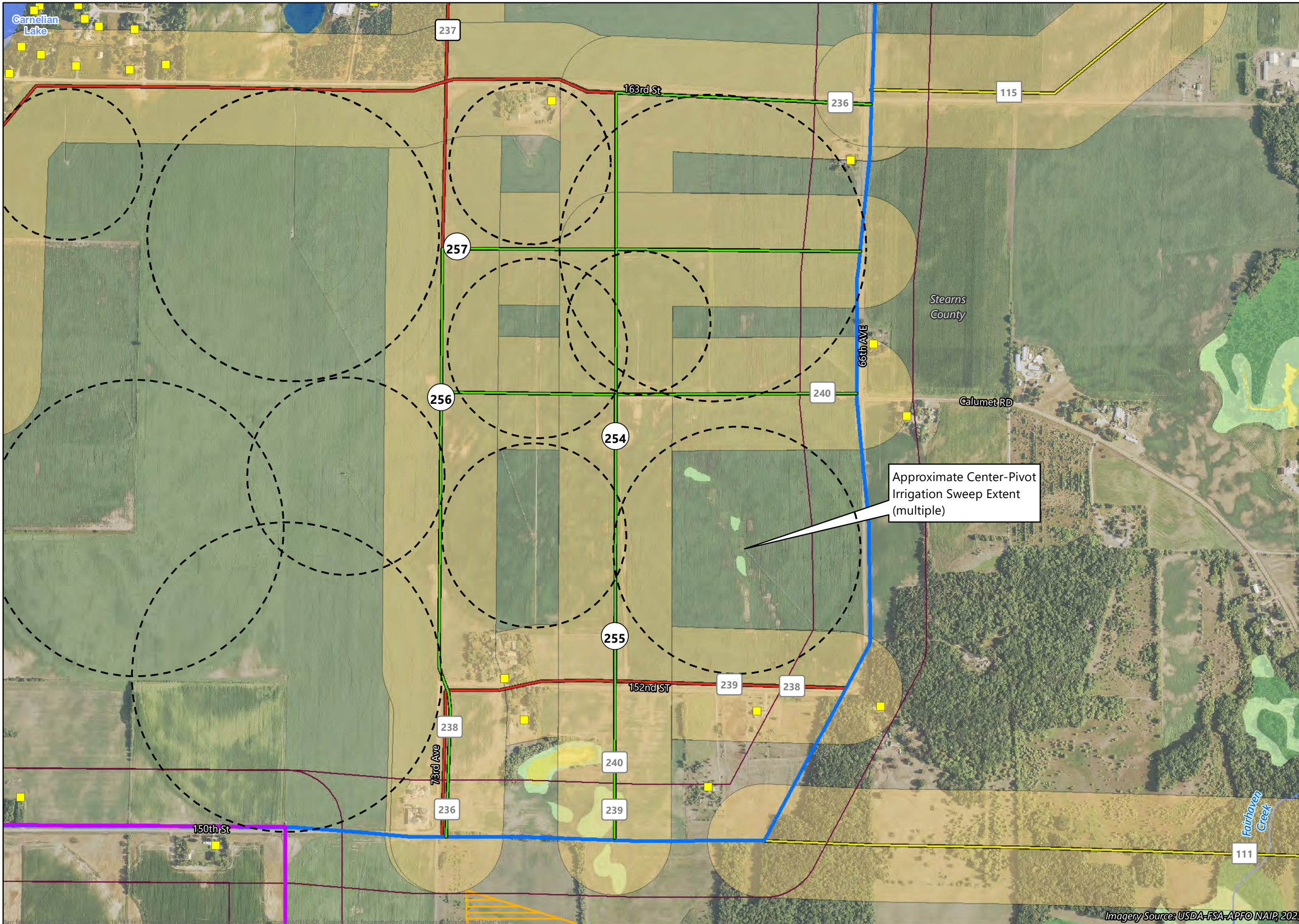
- Proposed Routes**
- Blue Route
 - Purple Route
 - Proposed Route
- Alternatives**
- Not Recommended Alternative
 - Route Connector
 - Alternative Width
 - Residence Location
 - PWI Waterway
 - PWI Basin
- Owner Type**
- State Land
- NWI Cowardin Class**
- Aquatic Bed/ Nonpersistent Emergent
 - Emergent
 - Forested
 - Scrub-Shrub
 - Unconsolidated Bottom (Open Water)



Map 11

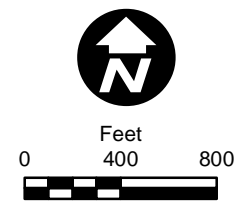
ROUTE CONNECTOR 118
 Scoping Alternatives
 Minnesota Energy
 Connection Project

Imagery Source: USDA-FSA-APFO NAIP, 2023



- Proposed Routes**
- Blue Route
 - Purple Route
 - Proposed Route
- Alternatives**
- Not Recommended Alternative
 - Route Connector
 - Route Segment
 - Alternative Width
 - Residence Location
 - PWI Waterway
 - PWI Basin
- Owner Type**
- Private Land
- NWI Cowardin Class**
- Aquatic Bed/Nonpersistent Emergent
 - Emergent
 - Forested
 - Scrub-Shrub
 - Unconsolidated Bottom (Open Water)

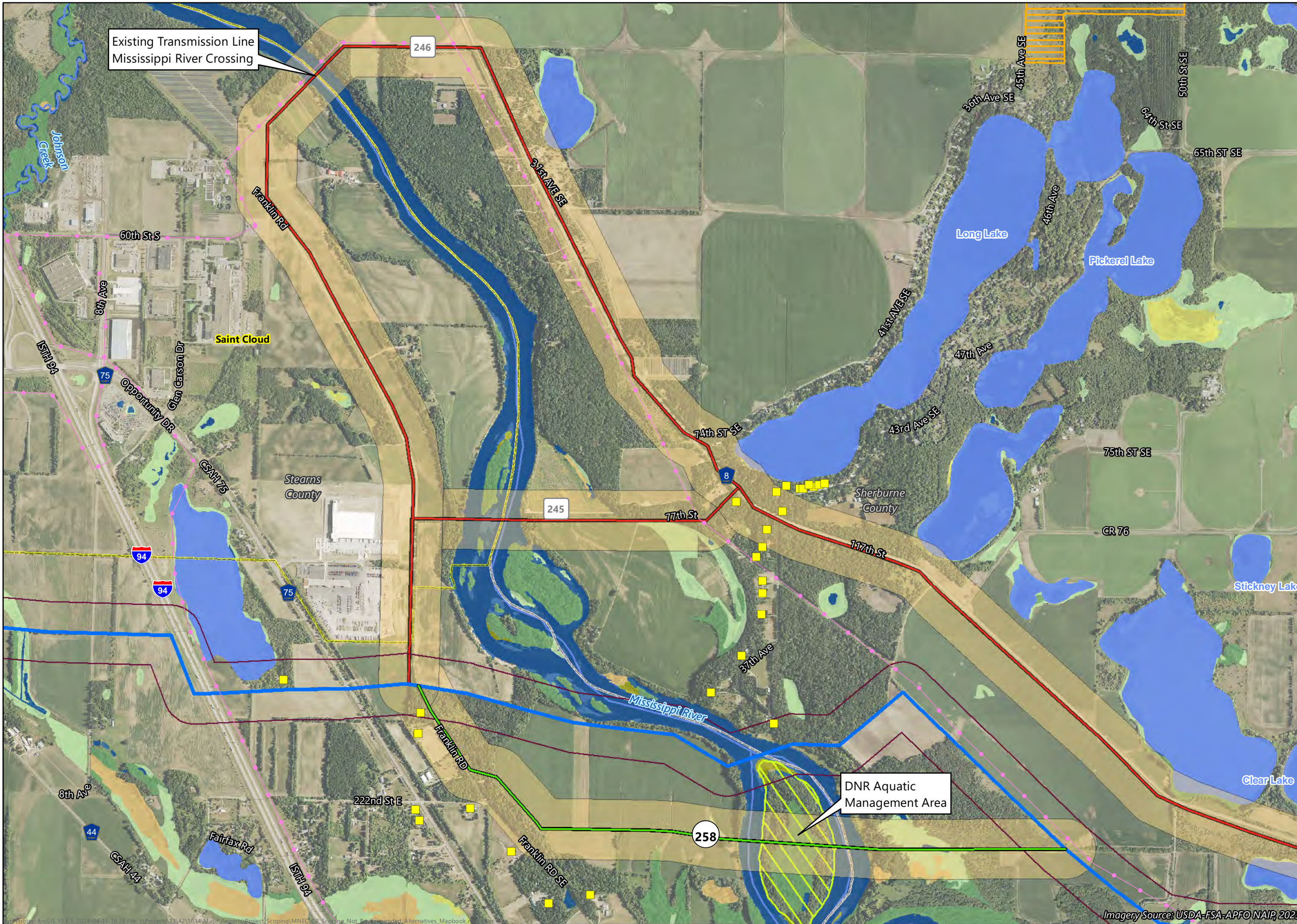
Approximate Center-Pivot Irrigation Sweep Extent (multiple)



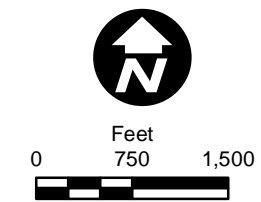
Map 12

ROUTE SEGMENTS 254 - 257
 Scoping Alternatives
 Minnesota Energy
 Connection Project

Imagery Source: USDA-FSA-APFO NAIP, 2023



- Proposed Routes**
- Blue Route
 - Proposed Route
- Alternatives**
- Not Recommended Alternative
 - Route Segment
 - Alternative Width
 - Residence Location
 - Existing Transmission Line
 - Municipal Boundary
 - PWI Waterway
 - PWI Basin
- Owner Type**
- State Land
 - Private Land
- NWI Cowardin Class**
- Aquatic Bed/Nonpersistent Emergent
 - Emergent
 - Forested
 - Scrub-Shrub
 - Unconsolidated Bottom (Open Water)
 - Unconsolidated Shore (Banks & Sandbars)



Map 13

ROUTE SEGMENT 258
 Scoping Alternatives
 Minnesota Energy
 Connection Project

Imagery Source: USDA-FSA-APFO NAIP, 2023