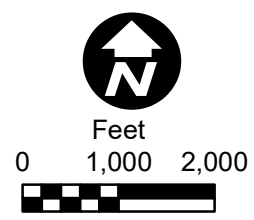


Imagery Source: MnGeo WMS service, 2021

- Proposed Alignment
- Proposed Route
- Route Alternative
- Alignment Alternative
- Route Alternative Width
- Existing Transmission Line
- Riverton Substation
- Cuyuna Series Compensation Station
- Residence Location
- PWI Waterway
- PWI Basin
- State WMA
- State Forest
- Other DNR Land
- Municipal Boundary

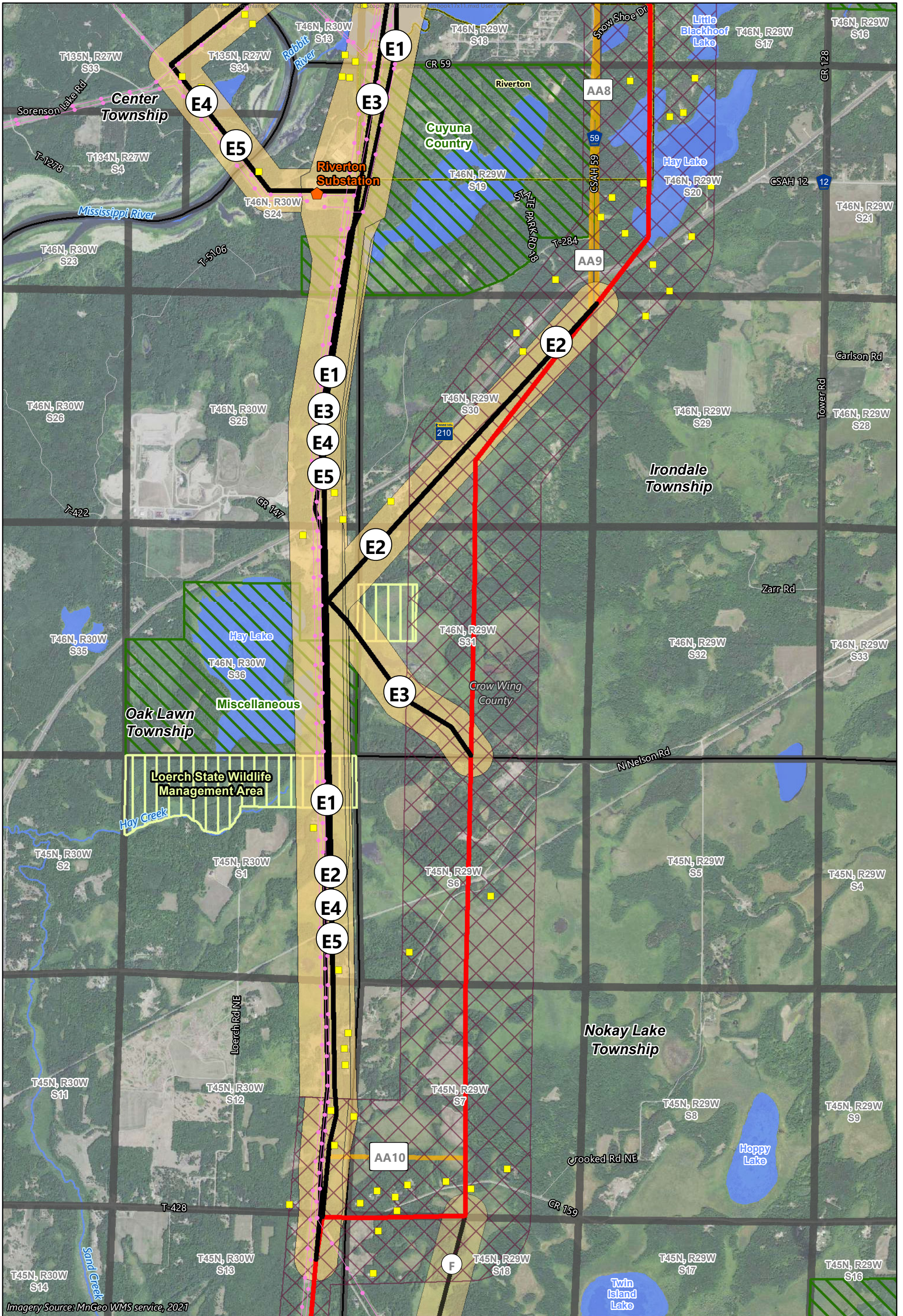
- Riverton Substation
- Cuyuna Series Compensation Station
- Residence Location
- PWI Waterway
- PWI Basin

- State WMA
- State Forest
- Other DNR Land
- Municipal Boundary

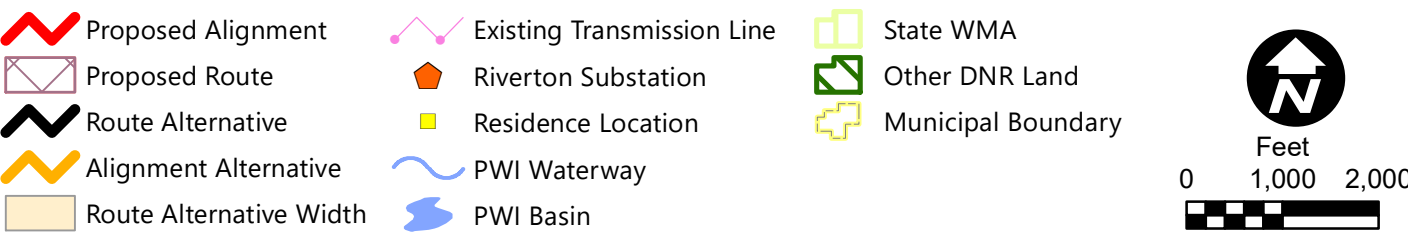


Map 6-2  
**ROUTE ALTERNATIVES E1 - E5 (NORTH)**  
 Riverton Area (RIVA)  
 Scoping Alternatives  
 Northland Reliability Project





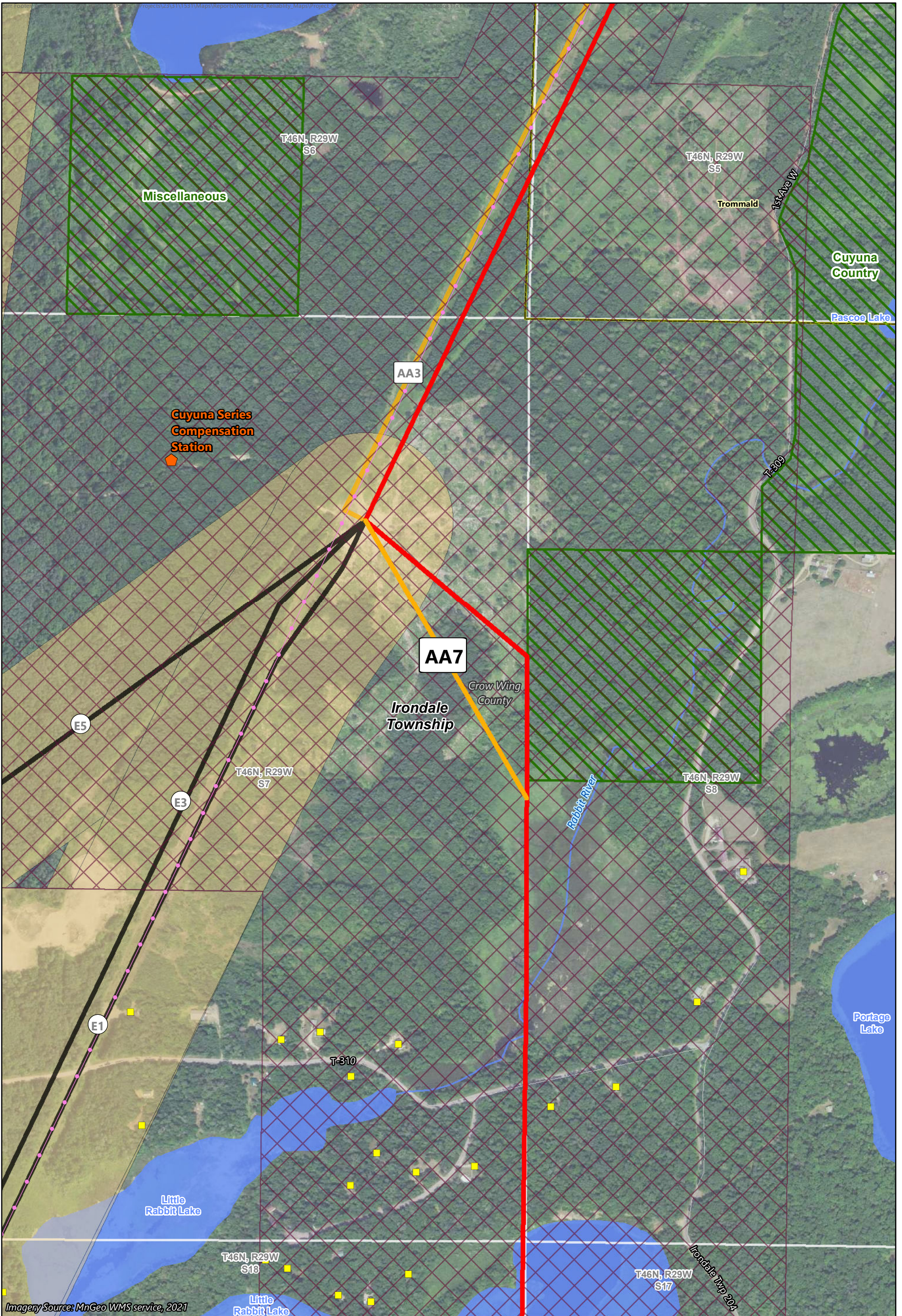
Imagery Source: MnGeo WMS service, 2021







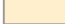





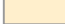

Map 6-3

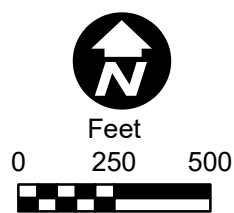
**ROUTE ALTERNATIVES E1 - E5 (SOUTH)**  
 Riverton Area (RIVA)  
 Scoping Alternatives  
 Northland Reliability Project





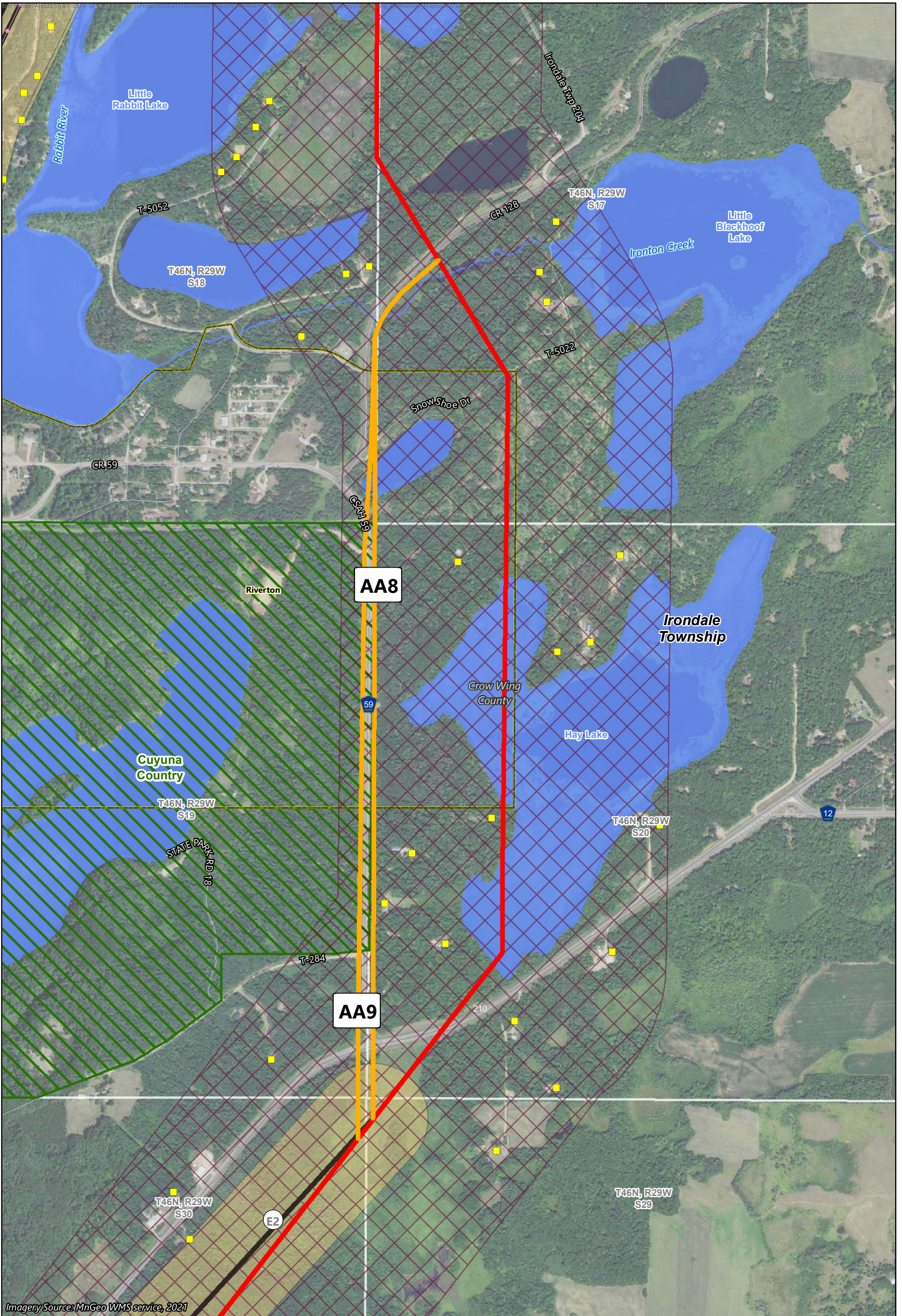
Imagery Source: MnGeo WMS service, 2021

-  Proposed Alignment
-  Existing Transmission Line
-  PWI Basin
-  Proposed Route
-  Cuyuna Series Compensation Station
-  Other DNR Land
-  Route Alternative
-  Residence Location
-  Municipal Boundary
-  Alignment Alternative
-  PWI Waterway
-  Route Alternative Width














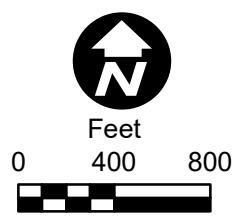
Map 6-4  
**ALIGNMENT ALTERNATIVE AA7**  
Riverton Area (RIVA)  
Scoping Alternatives  
Northland Reliability Project





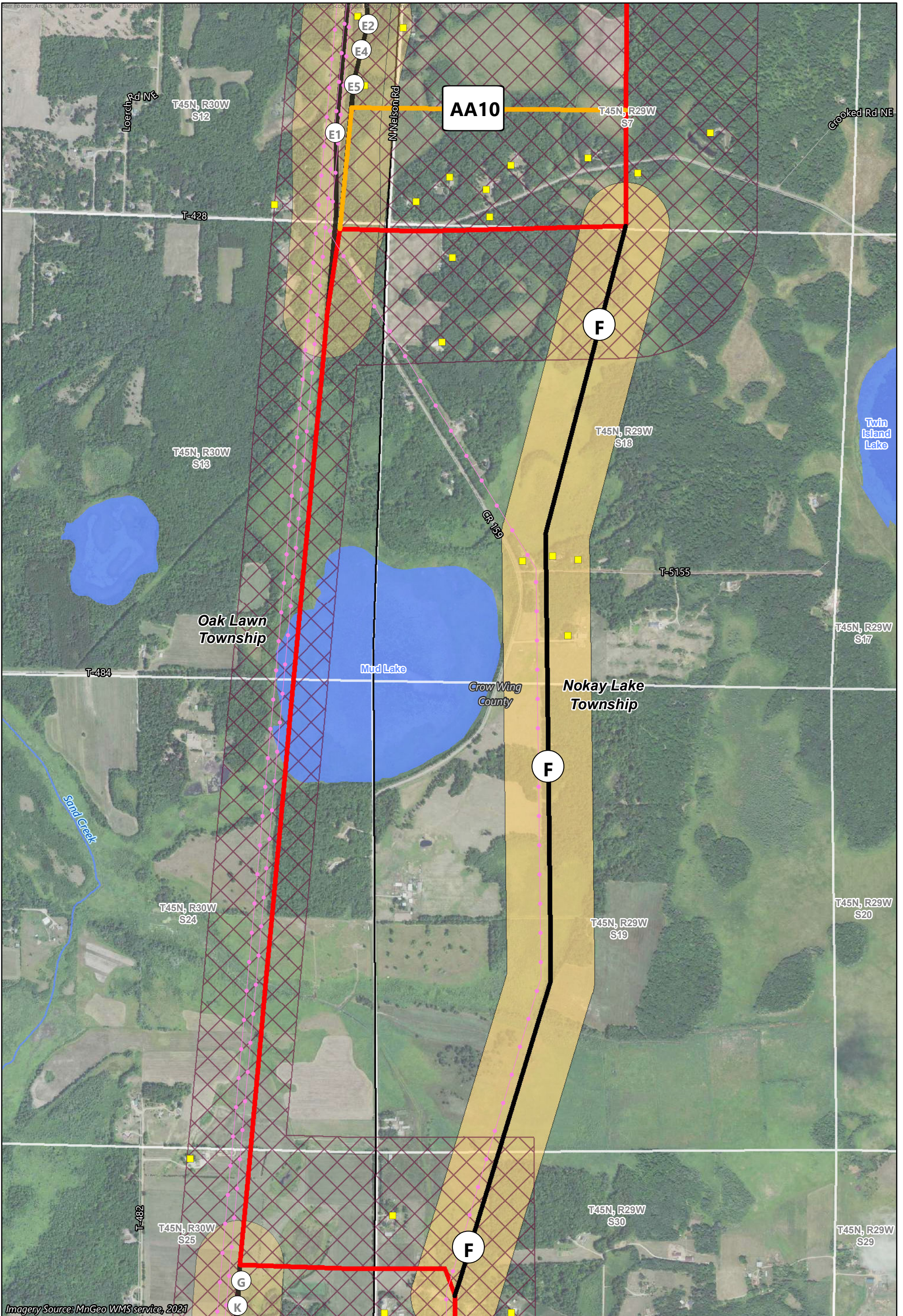
Imagery Source: MnGeo WMS service, 2021

-  Proposed Alignment
-  Existing Transmission Line
-  Municipal Boundary
-  Proposed Route
-  Residence Location
-  Route Alternative
-  PWI Waterway
-  Alignment Alternative
-  PWI Basin
-  Route Alternative Width
-  Other DNR Land












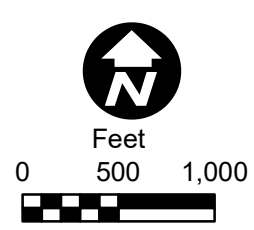
Map 6-5  
**ALIGNMENT ALTERNATIVES AA8 AND AA9**  
 Riverton Area (RIVA)  
 Scoping Alternatives  
 Northland Reliability Project





Imagery Source: MnGeo WMS service, 2021

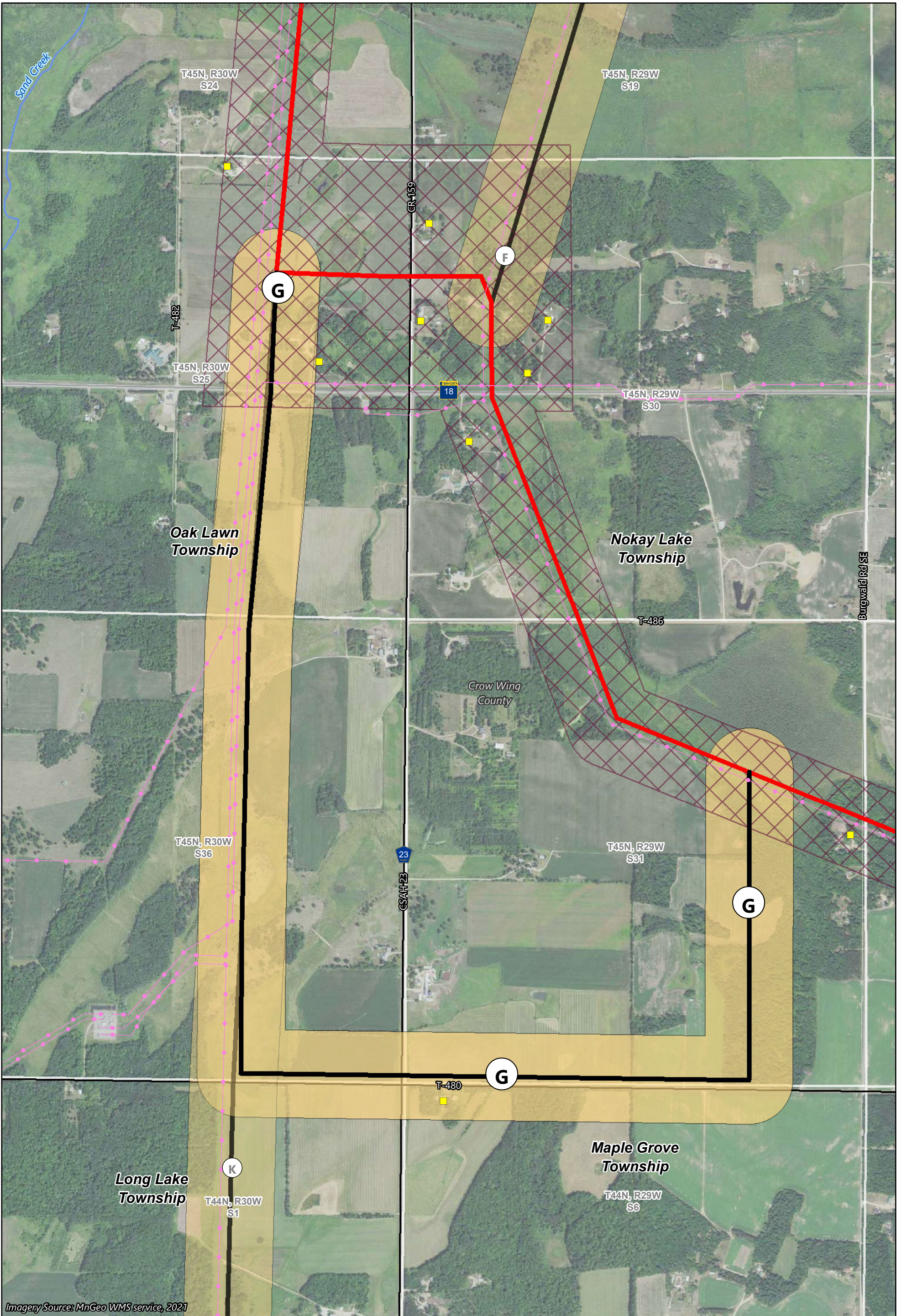
-  Proposed Alignment
-  Existing Transmission Line
-  Proposed Route
-  Residence Location
-  Route Alternative
-  PWI Waterway
-  Alignment Alternative
-  PWI Basin
-  Route Alternative Width








Map 6-6




**ROUTE ALTERNATIVE F AND  
ALIGNMENT ALTERNATIVE AA10**  
Riverton Area (RIVA)  
Scoping Alternatives  
Northland Reliability Project

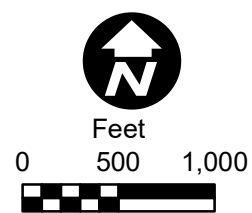




Imagery Source: MnGeo WMS service, 2021

-  Proposed Alignment
-  Proposed Route
-  Route Alternative
-  Alignment Alternative
-  Route Alternative Width

-  Existing Transmission Line
-  Residence Location
-  PWI Waterway



Map 6-7

**ROUTE ALTERNATIVE G**  
 Riverton Area (RIVA)  
 Scoping Alternatives  
 Northland Reliability Project