

Proposed Pipeline - Sandpiper	Milepost - Sandpiper	Tract Boundary
Existing Enbridge Pipelines	Potential Block Valve	Facility Boundary
Foreign Pipes	Environmental Survey Area (ESA)	Previously Sited Facility Boundary
Transmission Lines		Section Lines
SPREAD BREAK		

500 250 0 500 1,000 Feet

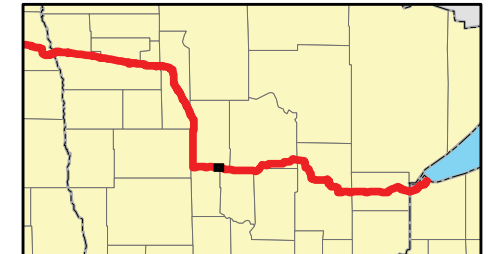
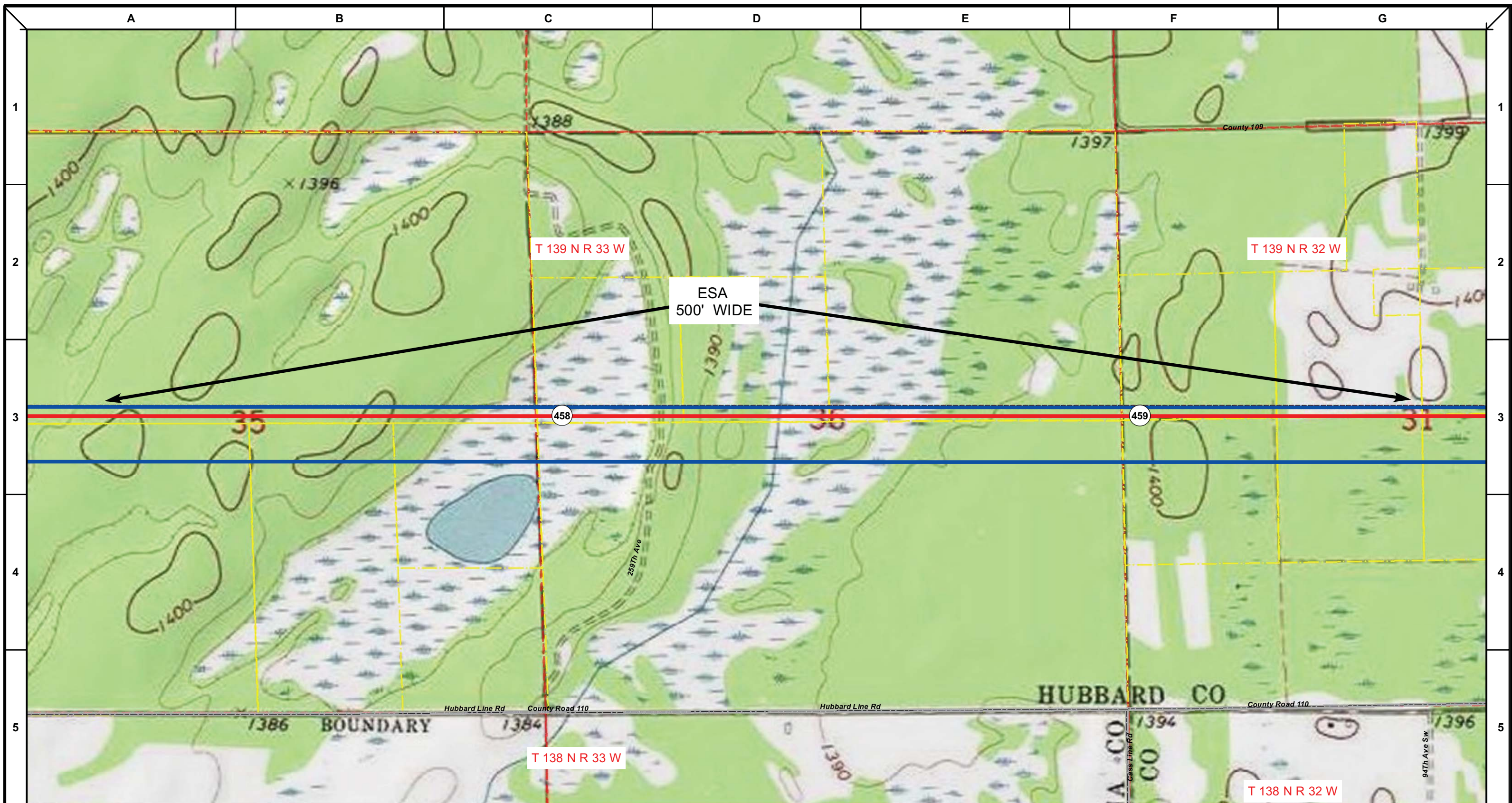
DRAWN	CHECKED	APPROVED	DATE	REV NO.	DESCRIPTION
			1/29/14	2	PUC Update - Revision D-2 Alignment
			12/19/13	1	PUC Update - Revision D Alignment
			10/10/13	0	PUC Submittal

NORTH DAKOTA PIPELINE COMPANY LLC

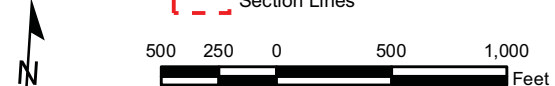
PROPOSED SANDPIPER PIPELINE PROJECT
ROUTE MAP
Hubbard County, MN

DRAWN: MLB	CHECKED: --
DATE: Jan 30, 2014	SCALE: AS SHOWN

Spread:7 Map: 67 of 123



- Proposed Pipeline - Sandpiper
- Existing Enbridge Pipelines
- Foreign Pipes
- - - Transmission Lines
- SPREAD BREAK
- 1 Milepost - Sandpiper
- ✕ Potential Block Valve
- Environmental Survey Area (ESA)
- Tract Boundary
- Facility Boundary
- Previously Sited Facility Boundary
- Section Lines



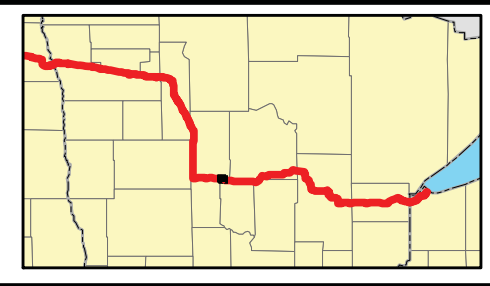
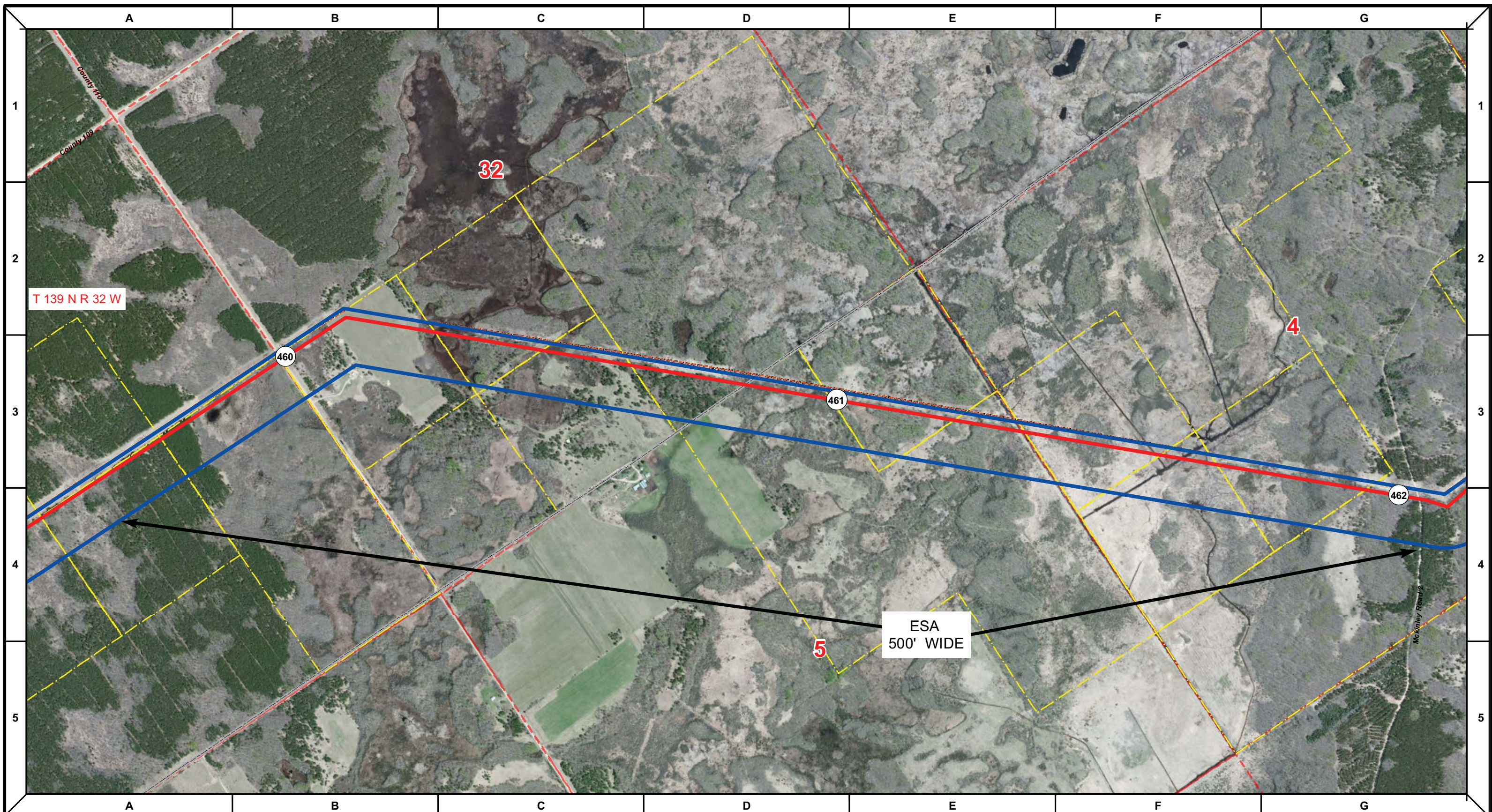
DRAWN	CHECKED	APPROVED	DATE	REV NO.	DESCRIPTION
			1/29/14	2	PUC Update - Revision D-2 Alignment
			12/19/13	1	PUC Update - Revision D Alignment
			10/10/13	0	PUC Submittal

ENBRIDGE
NORTH DAKOTA PIPELINE COMPANY LLC

**PROPOSED SANDPIPER
PIPELINE PROJECT
ROUTE MAP
Hubbard County, MN**

DRAWN: MLB	CHECKED: -
DATE: Jan 30, 2014	SCALE: AS SHOWN

Spread: 7 Map: 67 of 123



Proposed Pipeline - Sandpiper	Milepost - Sandpiper	Tract Boundary
Existing Enbridge Pipelines	Potential Block Valve	Facility Boundary
Foreign Pipes	Environmental Survey Area (ESA)	Previously Sited Facility Boundary
Transmission Lines		Section Lines
SPREAD BREAK		

500 250 0 500 1,000 Feet

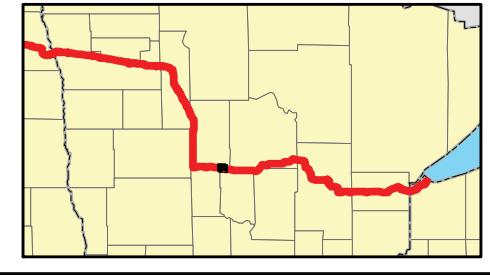
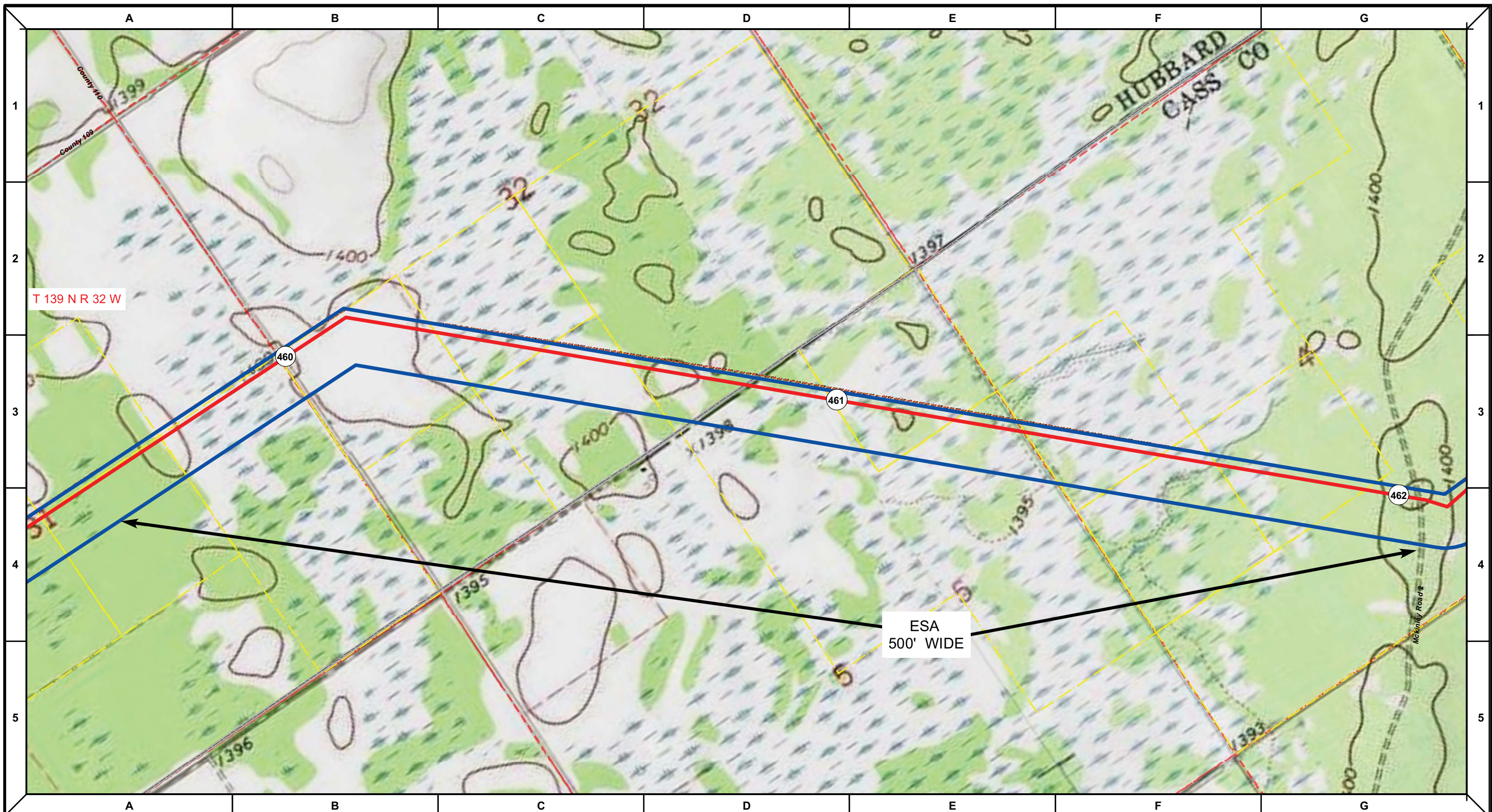
DRAWN	CHECKED	APPROVED	DATE	REV NO.	DESCRIPTION
			1/29/14	2	PUC Update - Revision D-2 Alignment
			12/19/13	1	PUC Update - Revision D Alignment
			10/10/13	0	PUC Submittal

NORTH DAKOTA PIPELINE COMPANY LLC

PROPOSED SANDPIPER PIPELINE PROJECT
ROUTE MAP
Hubbard & Cass County, MN

<small>DRAWN:</small> MLB	<small>CHECKED:</small> --
<small>DATE:</small> Jan 30, 2014	<small>SCALE:</small> AS SHOWN

Spread:7 Map: 68 of 123



Proposed Pipeline - Sandpiper	Milepost - Sandpiper	Tract Boundary
Existing Enbridge Pipelines	Potential Block Valve	Facility Boundary
Foreign Pipes	Environmental Survey Area (ESA)	Previously Sited Facility Boundary
Transmission Lines		Section Lines
SPREAD BREAK		

500 250 0 500 1,000 Feet

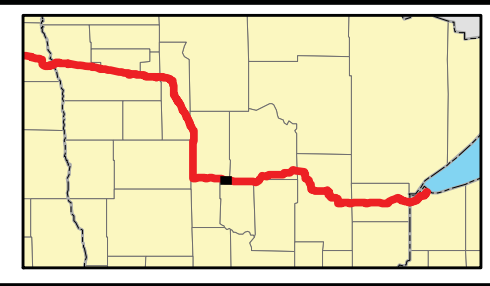
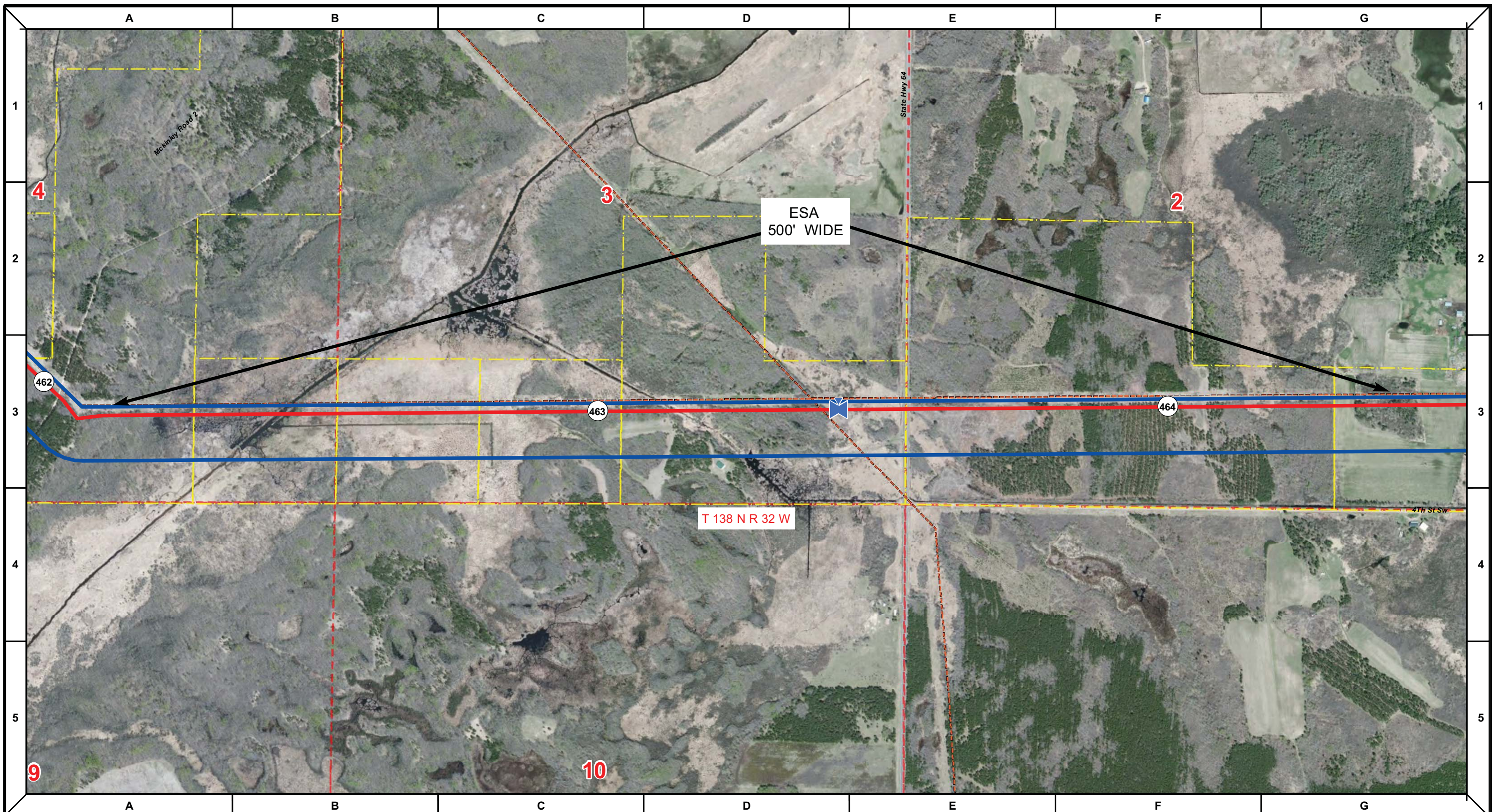
DRAWN	CHECKED	APPROVED	DATE	REV NO.	DESCRIPTION
			1/29/14	2	PUC Update - Revision D-2 Alignment
			12/19/13	1	PUC Update - Revision D Alignment
			10/10/13	0	PUC Submittal

NORTH DAKOTA PIPELINE COMPANY LLC

PROPOSED SANDPIPER PIPELINE PROJECT
ROUTE MAP
Hubbard & Cass County, MN

<small>DRAWN:</small> MLB	<small>CHECKED:</small> -
<small>DATE:</small> Jan 30, 2014	<small>SCALE:</small> AS SHOWN

Spread:7 Map: 68 of 123



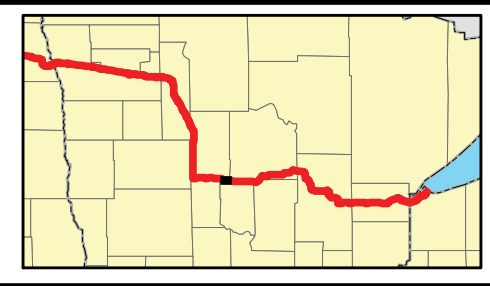
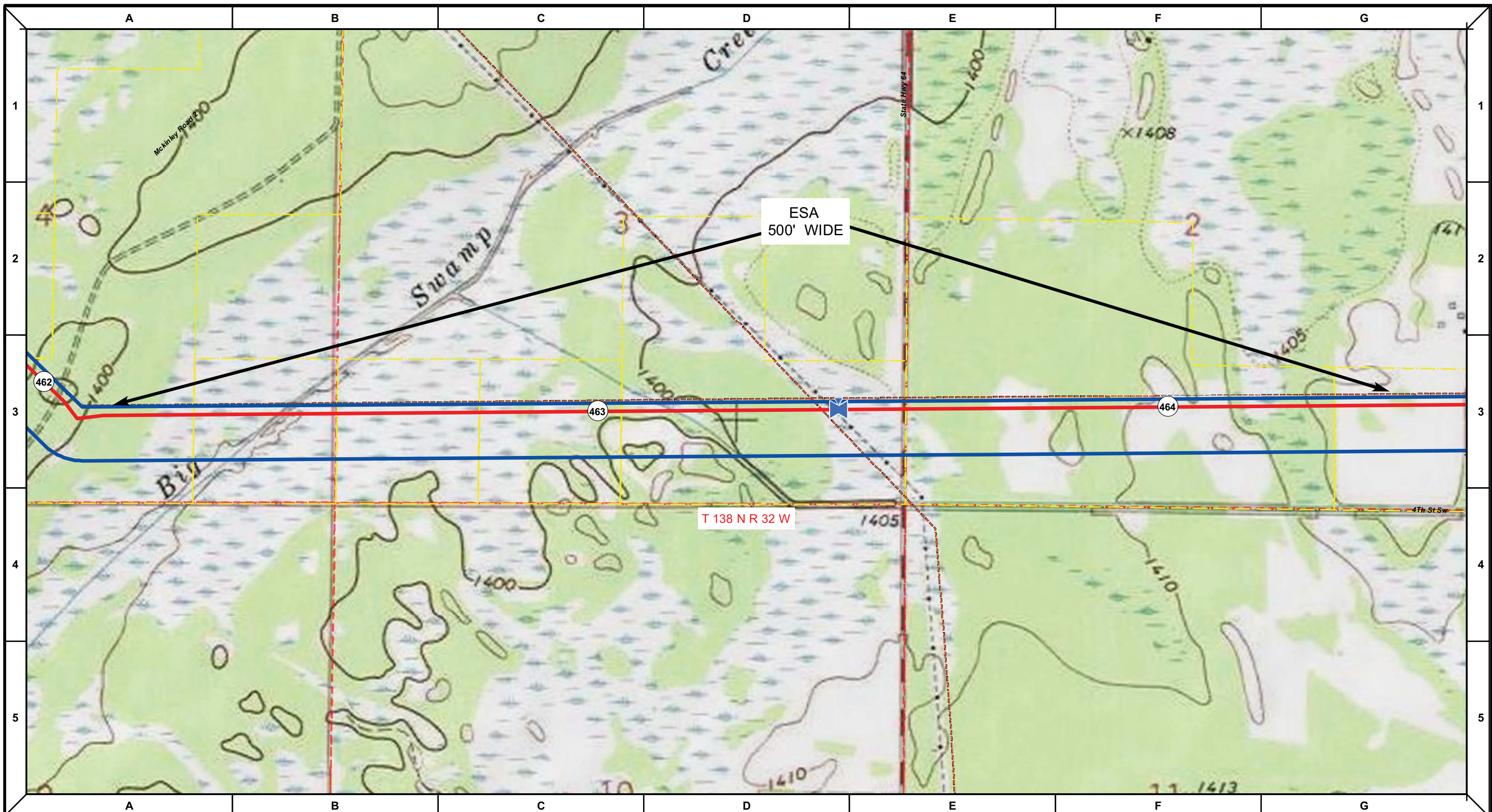
Proposed Pipeline - Sandpiper	Milepost - Sandpiper	Tract Boundary
Existing Enbridge Pipelines	Potential Block Valve	Facility Boundary
Foreign Pipes	Environmental Survey Area (ESA)	Previously Sited Facility Boundary
Transmission Lines		Section Lines
SPREAD BREAK		

DRAWN	CHECKED	APPROVED	DATE	REV NO.	DESCRIPTION
			1/29/14	2	PUC Update - Revision D-2 Alignment
			12/19/13	1	PUC Update - Revision D Alignment
			10/10/13	0	PUC Submittal

NORTH DAKOTA PIPELINE COMPANY LLC
PROPOSED SANDPIPER PIPELINE PROJECT
ROUTE MAP
Cass County, MN

<small>DRAWN:</small> MLB	<small>CHECKED:</small> --
<small>DATE:</small> Jan 30, 2014	<small>SCALE:</small> AS SHOWN

Spread: 7 Map: 69 of 123



Proposed Pipeline - Sandpiper	Milepost - Sandpiper	Tract Boundary
Existing Enbridge Pipelines	Potential Block Valve	Facility Boundary
Foreign Pipes	Environmental Survey Area (ESA)	Previously Sited Facility Boundary
Transmission Lines		Section Lines
SPREAD BREAK		

500 250 0 500 1,000 Feet

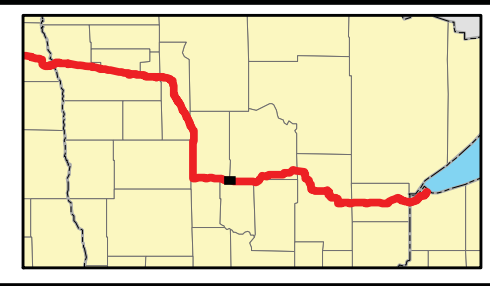
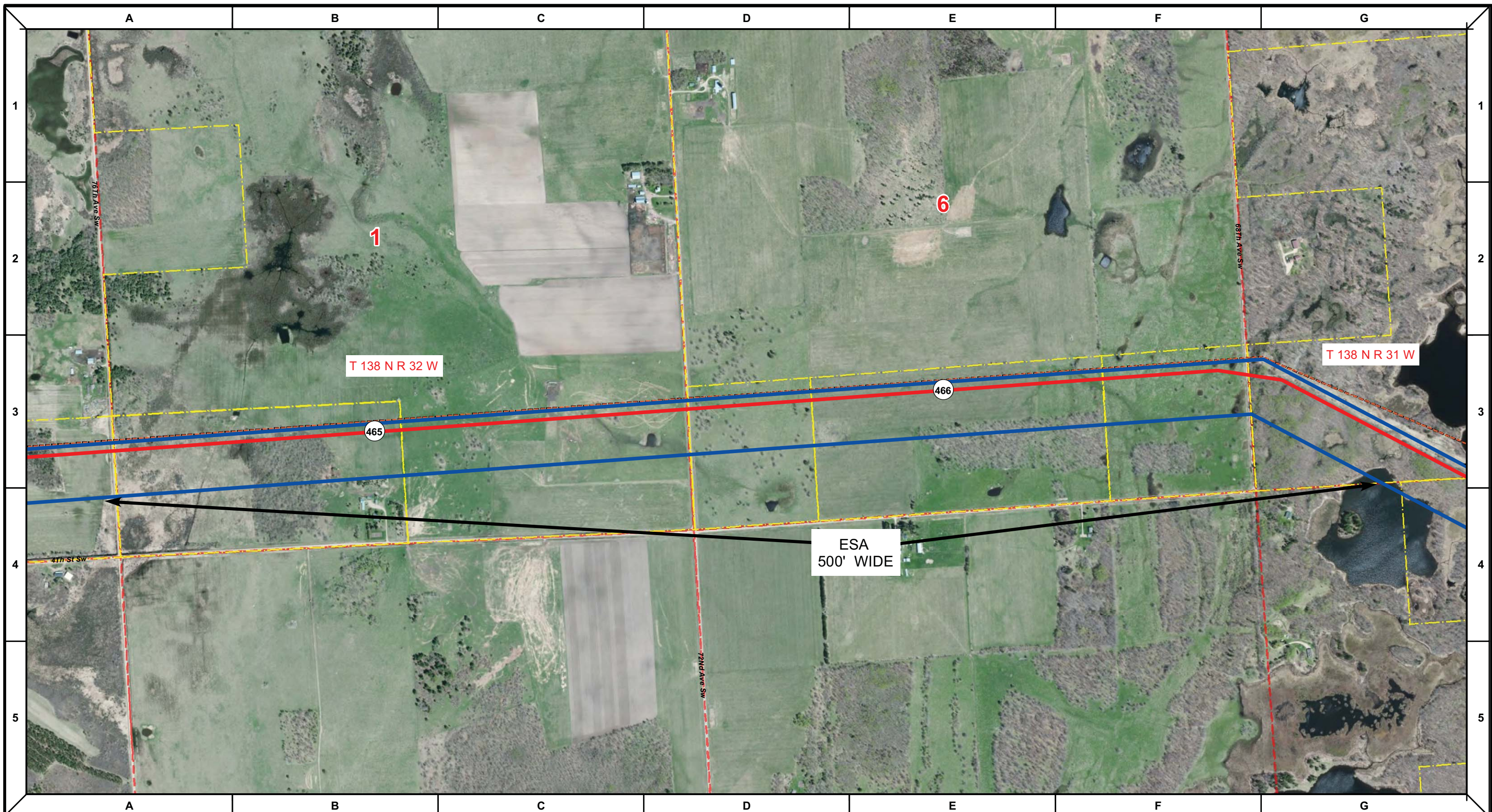
DRAWN	CHECKED	APPROVED	DATE	REV NO.	DESCRIPTION
			1/29/14	2	PUC Update - Revision D-2 Alignment
			12/19/13	1	PUC Update - Revision D Alignment
			10/10/13	0	PUC Submittal

NORTH DAKOTA PIPELINE COMPANY LLC

PROPOSED SANDPIPER PIPELINE PROJECT
ROUTE MAP
Cass County, MN

DRAWN: MLB	CHECKED: -
DATE: Jan 30, 2014	SCALE: AS SHOWN

Spread:7 Map: 69 of 123



Proposed Pipeline - Sandpiper	Milepost - Sandpiper	Tract Boundary
Existing Enbridge Pipelines	Potential Block Valve	Facility Boundary
Foreign Pipes	Environmental Survey Area (ESA)	Previously Sited Facility Boundary
Transmission Lines		Section Lines
SPREAD BREAK		

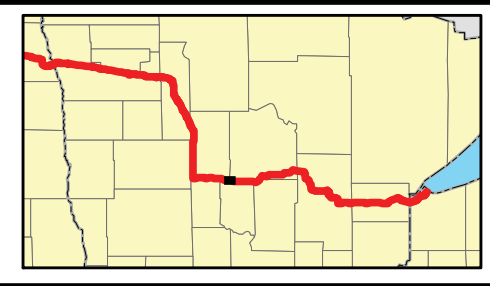
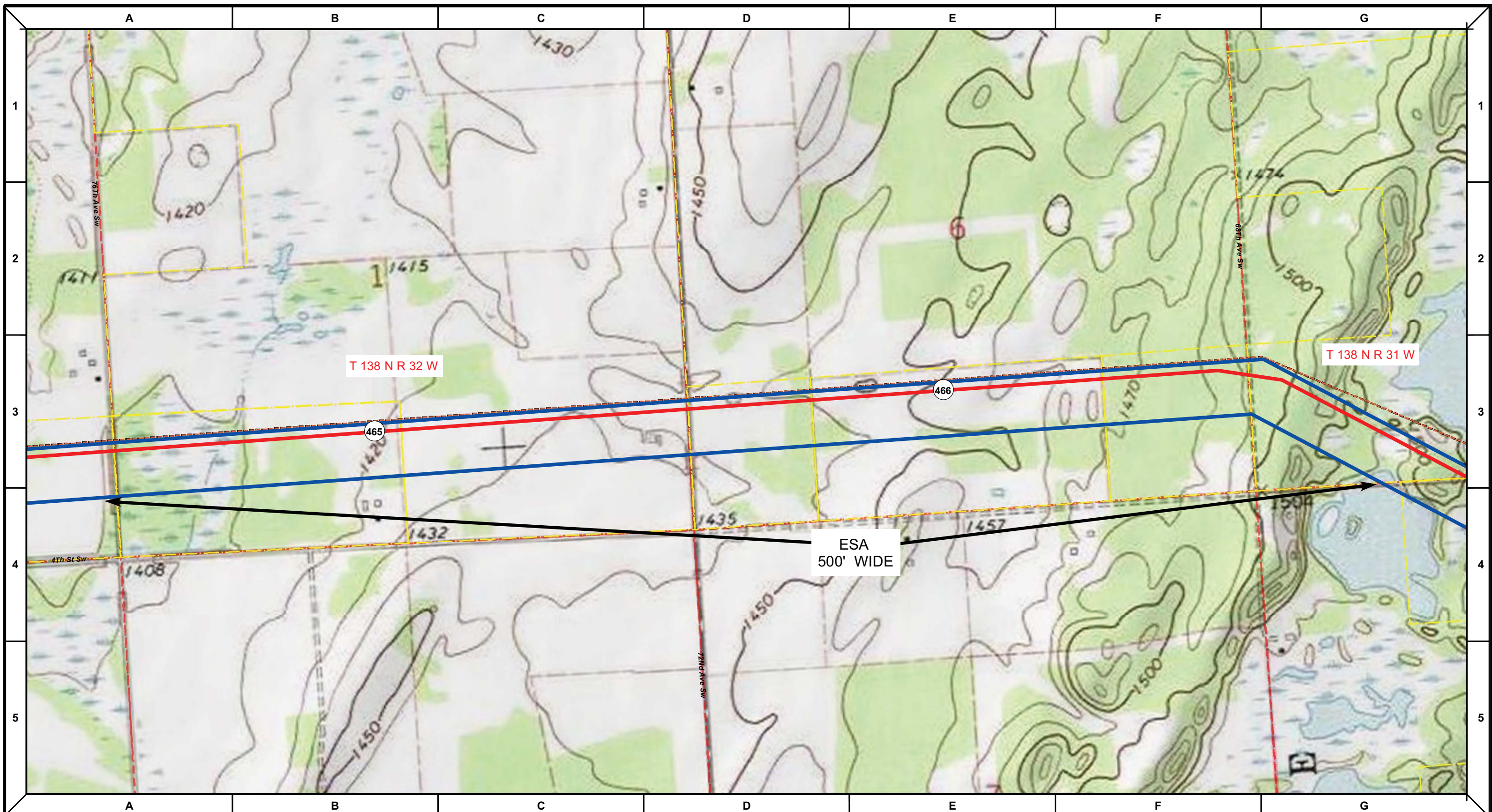
500 250 0 500 1,000 Feet

DRAWN	CHECKED	APPROVED	DATE	REV NO.	DESCRIPTION
			1/29/14	2	PUC Update - Revision D-2 Alignment
			12/19/13	1	PUC Update - Revision D Alignment
			10/10/13	0	PUC Submittal

NORTH DAKOTA PIPELINE COMPANY LLC
PROPOSED SANDPIPER PIPELINE PROJECT
ROUTE MAP
Cass County, MN

DRAWN: <i>MLB</i>	CHECKED: --
DATE: Jan 30, 2014	SCALE: AS SHOWN

Spread: 7 Map: 70 of 123



Proposed Pipeline - Sandpiper	Milepost - Sandpiper	Tract Boundary
Existing Enbridge Pipelines	Potential Block Valve	Facility Boundary
Foreign Pipes	Environmental Survey Area (ESA)	Previously Sited Facility Boundary
Transmission Lines		Section Lines
SPREAD BREAK		

500 250 0 500 1,000 Feet

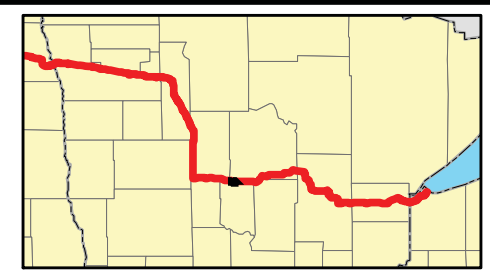
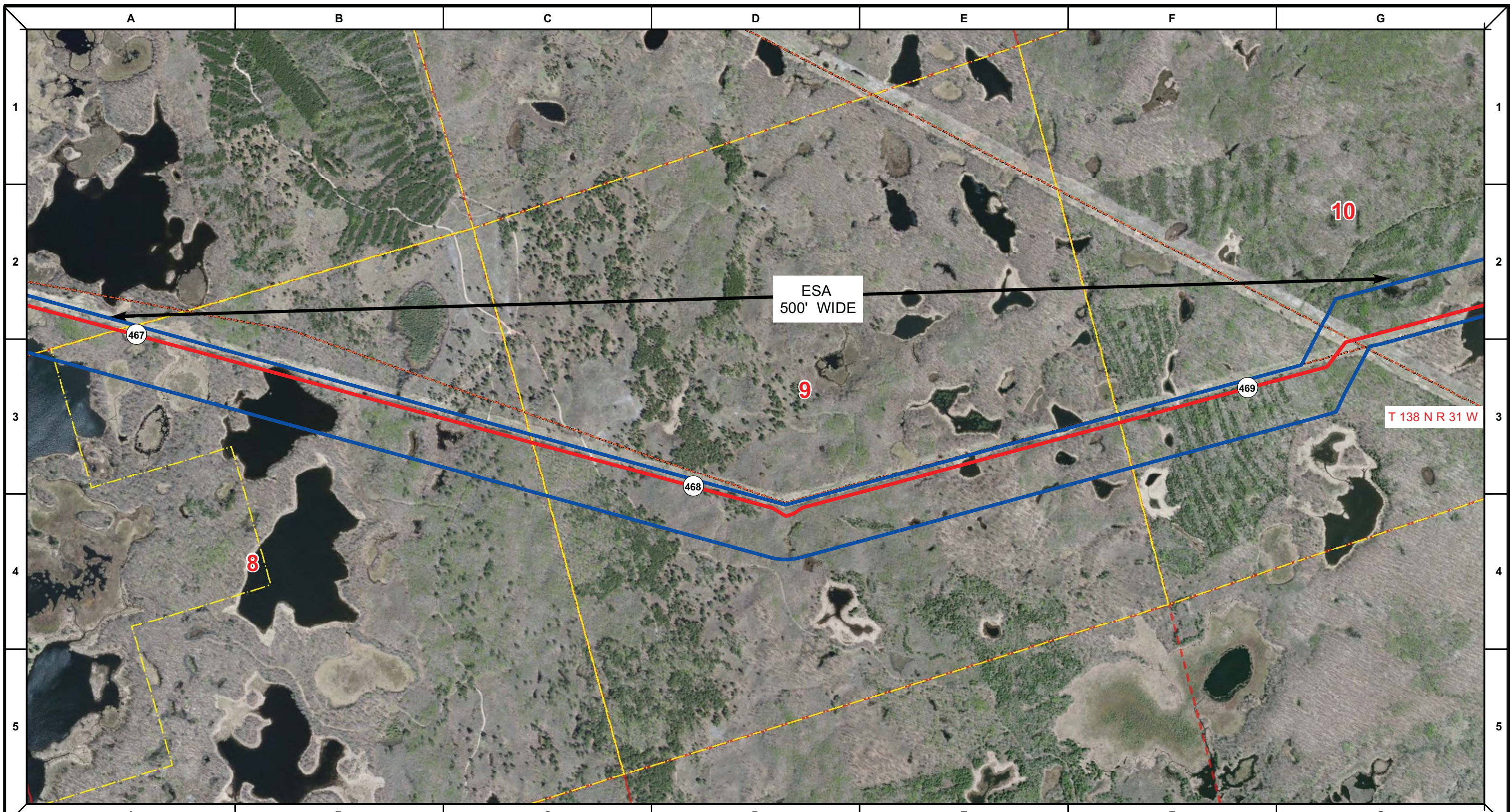
DRAWN	CHECKED	APPROVED	DATE	REV NO.	DESCRIPTION
			1/29/14	2	PUC Update - Revision D-2 Alignment
			12/19/13	1	PUC Update - Revision D Alignment
			10/10/13	0	PUC Submittal

NORTH DAKOTA PIPELINE COMPANY LLC

**PROPOSED SANDPIPER
 PIPELINE PROJECT
 ROUTE MAP
 Cass County, MN**

DRAWN: MLB	CHECKED: -
DATE: Jan 30, 2014	SCALE: AS SHOWN

Spread:7 Map: 70 of 123



- Proposed Pipeline - Sandpiper
- Existing Enbridge Pipelines
- Foreign Pipes
- Transmission Lines
- SPREAD BREAK
- 1 Milepost - Sandpiper
- ✕ Potential Block Valve
- Environmental Survey Area (ESA)
- Tract Boundary
- Facility Boundary
- Previously Sited Facility Boundary
- Section Lines

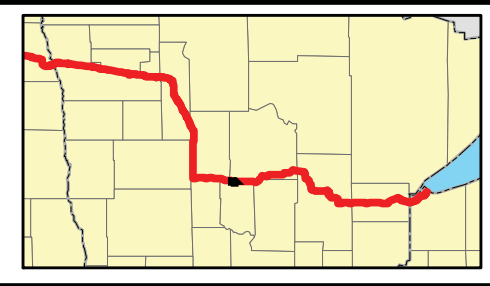
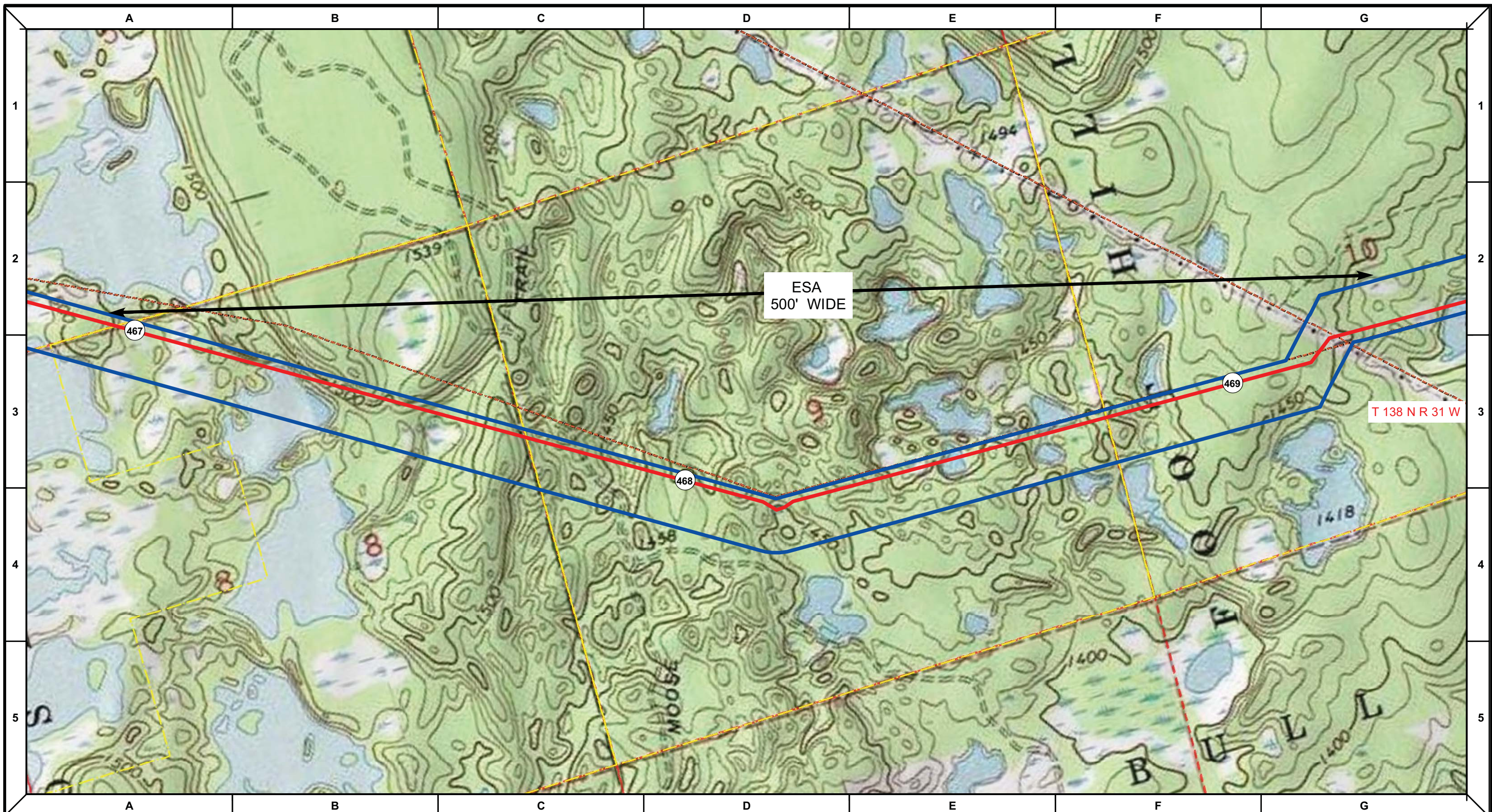
DRAWN	CHECKED	APPROVED	DATE	REV NO.	DESCRIPTION
			1/29/14	2	PUC Update - Revision D-2 Alignment
			12/19/13	1	PUC Update - Revision D Alignment
			10/10/13	0	PUC Submittal

ENBRIDGE
NORTH DAKOTA PIPELINE COMPANY LLC

**PROPOSED SANDPIPER
PIPELINE PROJECT
ROUTE MAP
Cass County, MN**

DRAWN: MLB	CHECKED: --
DATE: Jan 30, 2014	SCALE: AS SHOWN

Spread:7
Map: 71 of 123



Proposed Pipeline - Sandpiper	Milepost - Sandpiper	Tract Boundary
Existing Enbridge Pipelines	Potential Block Valve	Facility Boundary
Foreign Pipes	Environmental Survey Area (ESA)	Previously Sited Facility Boundary
Transmission Lines		Section Lines
SPREAD BREAK		

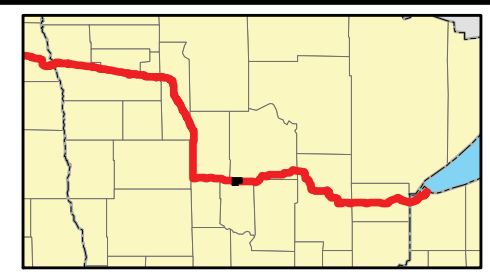
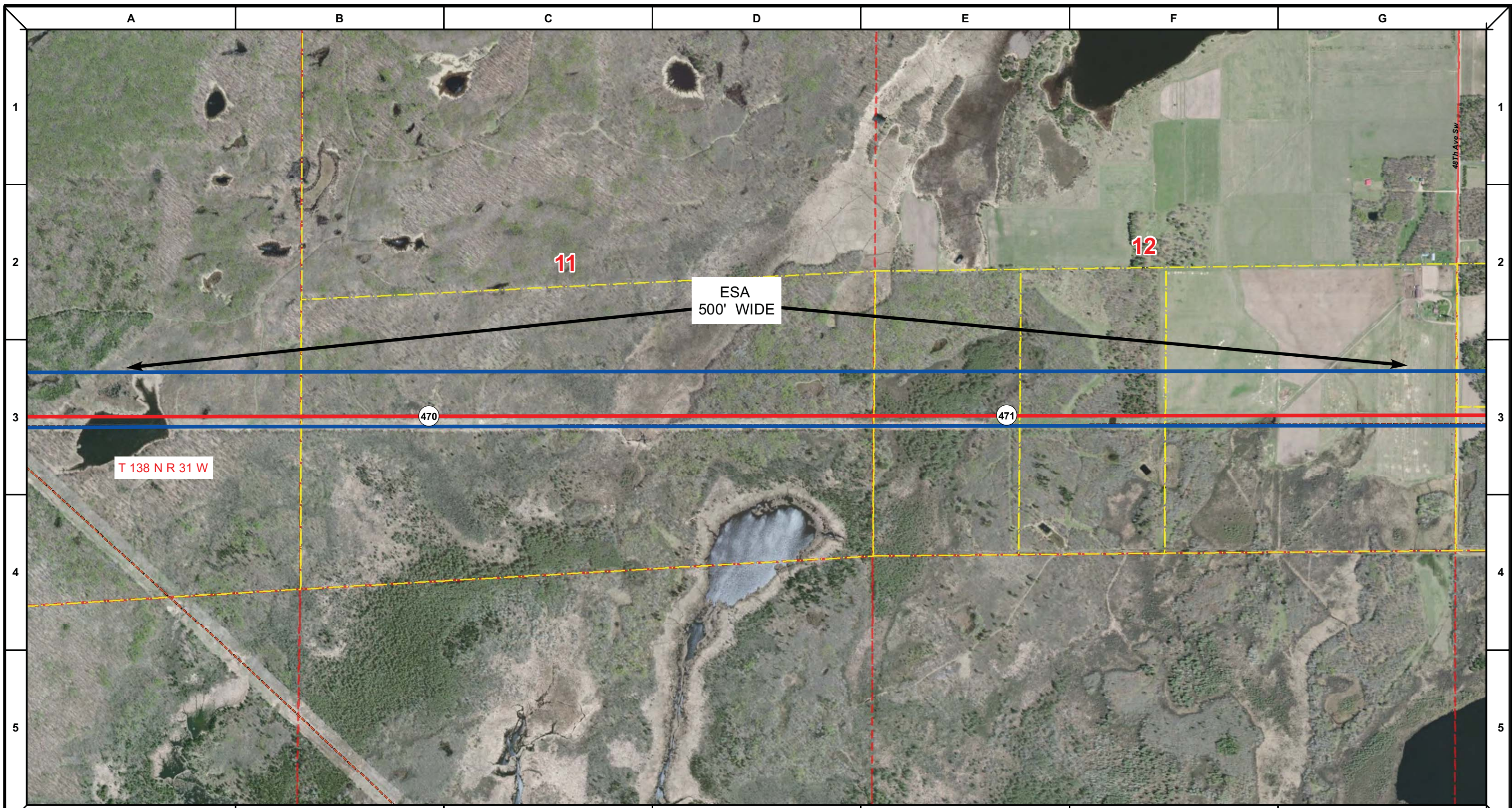
DRAWN	CHECKED	APPROVED	DATE	REV NO.	DESCRIPTION
			1/29/14	2	PUC Update - Revision D-2 Alignment
			12/19/13	1	PUC Update - Revision D Alignment
			10/10/13	0	PUC Submittal

NORTH DAKOTA PIPELINE COMPANY LLC

**PROPOSED SANDPIPER
 PIPELINE PROJECT
 ROUTE MAP
 Cass County, MN**

DRAWN: MLB	CHECKED: -
DATE: Jan 30, 2014	SCALE: AS SHOWN

Spread:7 Map: 71 of 123



Proposed Pipeline - Sandpiper	Milepost - Sandpiper	Tract Boundary
Existing Enbridge Pipelines	Potential Block Valve	Facility Boundary
Foreign Pipes	Environmental Survey Area (ESA)	Previously Sited Facility Boundary
Transmission Lines		Section Lines
SPREAD BREAK		

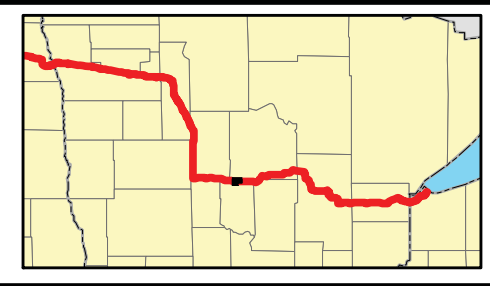
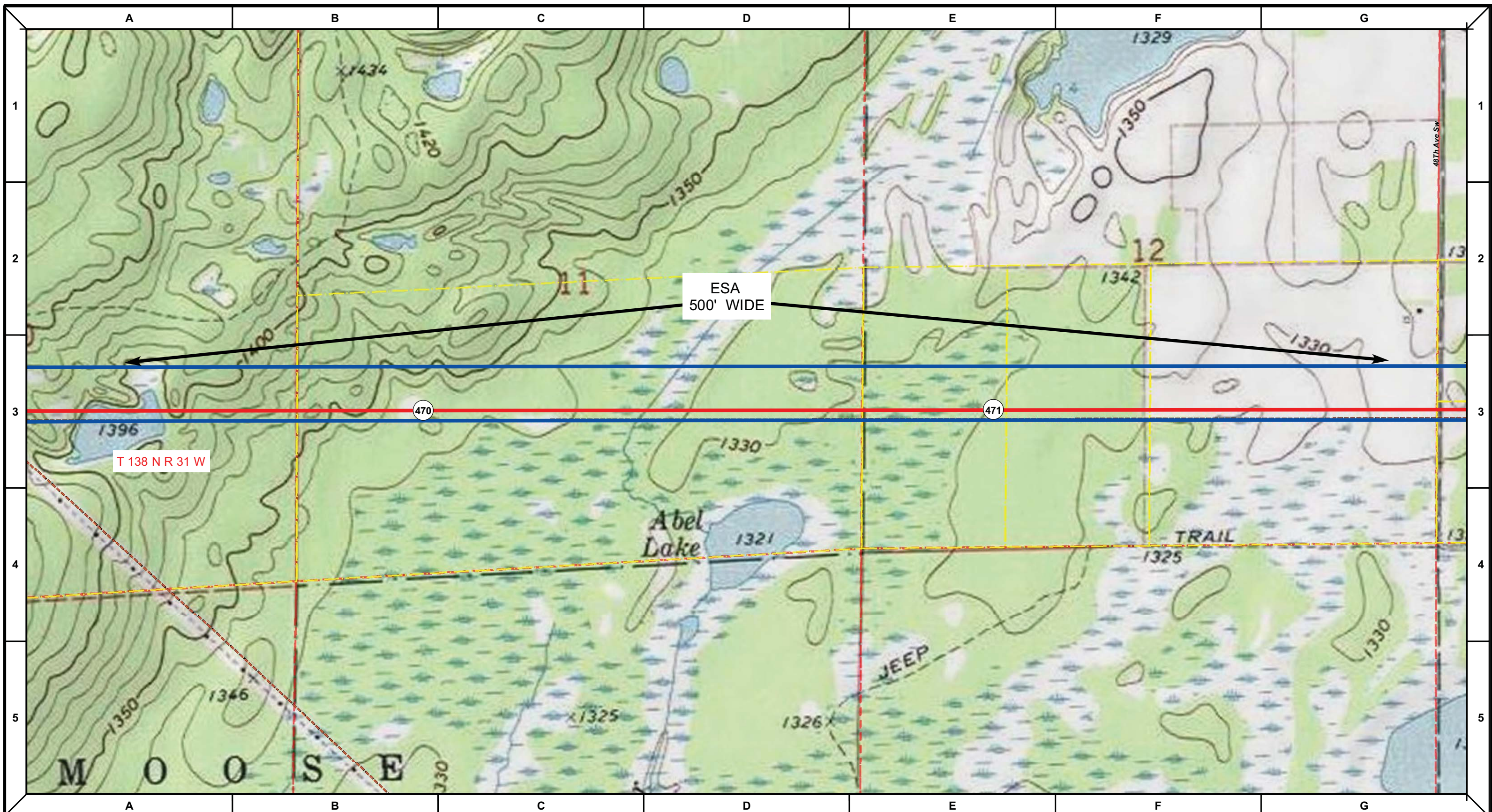
DRAWN	CHECKED	APPROVED	DATE	REV NO.	DESCRIPTION
			1/29/14	2	PUC Update - Revision D-2 Alignment
			12/19/13	1	PUC Update - Revision D Alignment
			10/10/13	0	PUC Submittal

NORTH DAKOTA PIPELINE COMPANY LLC

PROPOSED SANDPIPER PIPELINE PROJECT
ROUTE MAP
Cass County, MN

<small>DRAWN:</small> MLB	<small>CHECKED:</small> --
<small>DATE:</small> Jan 30, 2014	<small>SCALE:</small> AS SHOWN

Spread:7 Map: 72 of 123



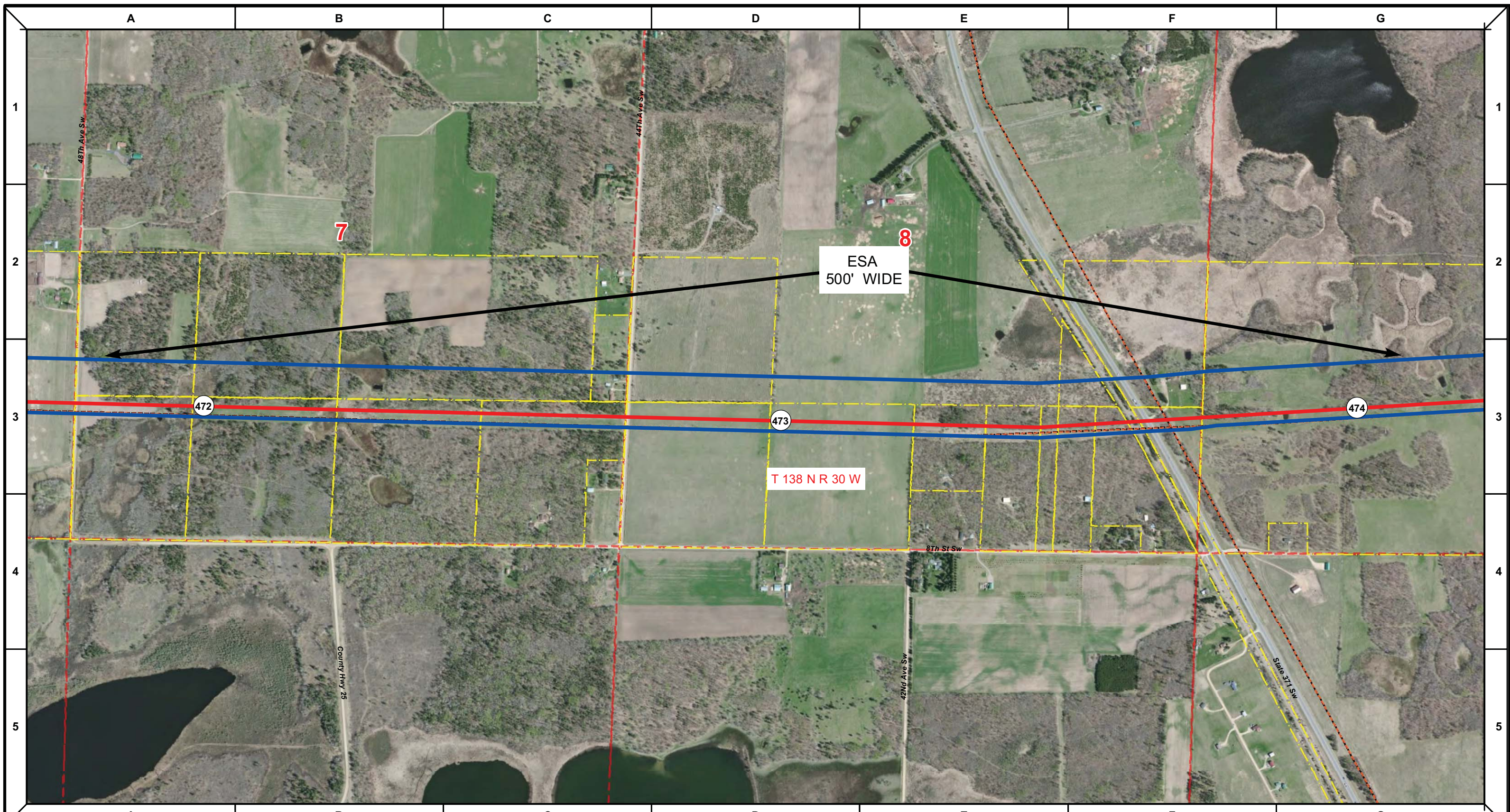
Proposed Pipeline - Sandpiper	Milepost - Sandpiper	Tract Boundary
Existing Enbridge Pipelines	Potential Block Valve	Facility Boundary
Foreign Pipes	Environmental Survey Area (ESA)	Previously Sited Facility Boundary
Transmission Lines		Section Lines
SPREAD BREAK		

DRAWN	CHECKED	APPROVED	DATE	REV NO.	DESCRIPTION
			1/29/14	2	PUC Update - Revision D-2 Alignment
			12/19/13	1	PUC Update - Revision D Alignment
			10/10/13	0	PUC Submittal

NORTH DAKOTA PIPELINE COMPANY LLC
PROPOSED SANDPIPER PIPELINE PROJECT
ROUTE MAP
Cass County, MN

DRAWN: MLB	CHECKED: -
DATE: Jan 30, 2014	SCALE: AS SHOWN

Spread: 7 Map: 72 of 123



Proposed Pipeline - Sandpiper	Milepost - Sandpiper	Tract Boundary
Existing Enbridge Pipelines	Potential Block Valve	Facility Boundary
Foreign Pipes	Environmental Survey Area (ESA)	Previously Sited Facility Boundary
Transmission Lines		Section Lines
SPREAD BREAK		

500 250 0 500 1,000 Feet

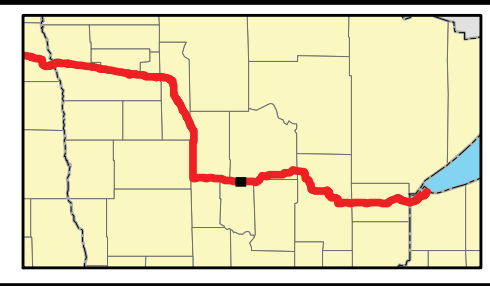
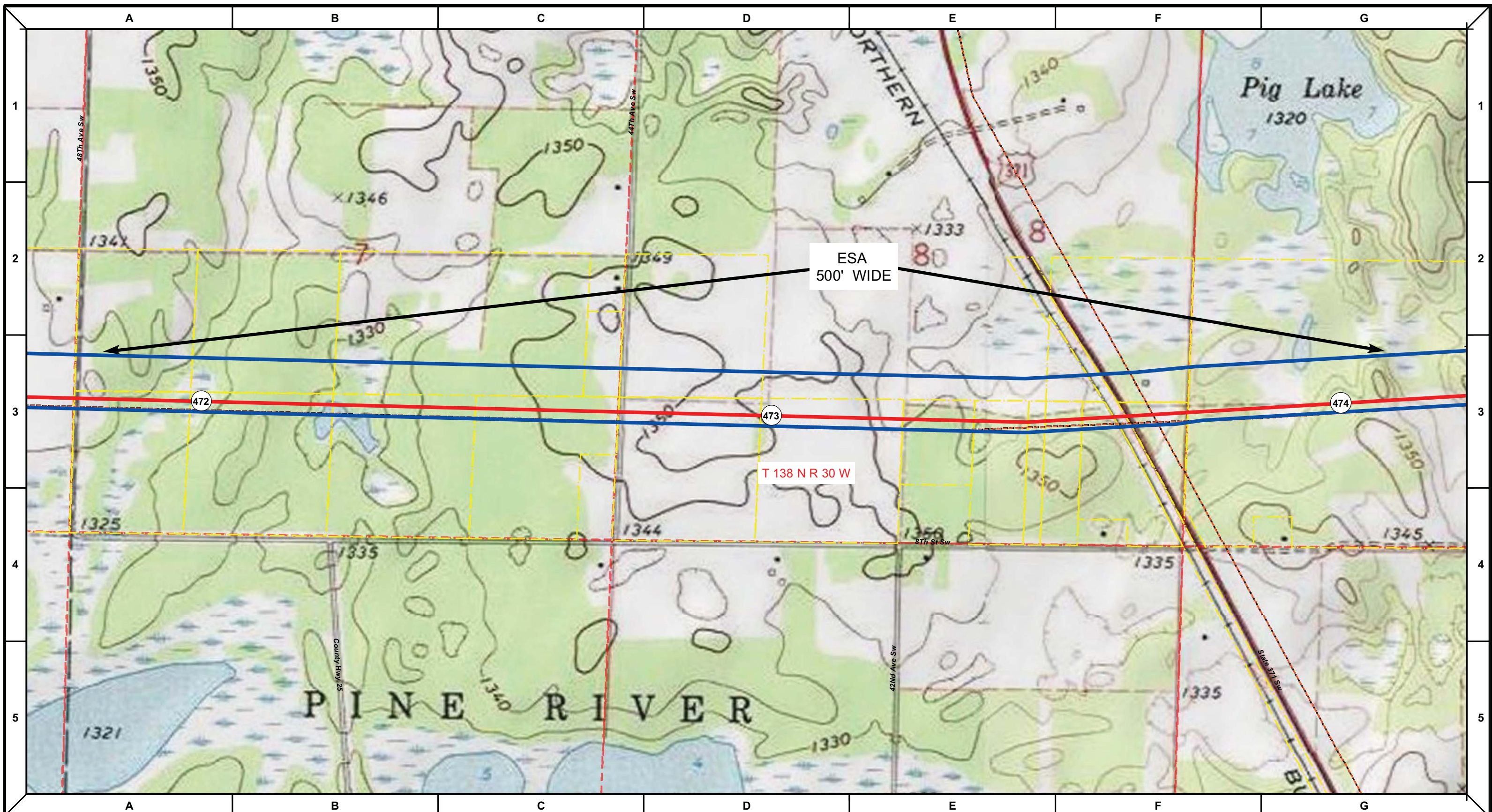
DRAWN	CHECKED	APPROVED	DATE	REV NO.	DESCRIPTION
			1/29/14	2	PUC Update - Revision D-2 Alignment
			12/19/13	1	PUC Update - Revision D Alignment
			10/10/13	0	PUC Submittal

NORTH DAKOTA PIPELINE COMPANY LLC

PROPOSED SANDPIPER PIPELINE PROJECT
ROUTE MAP
Cass County, MN

DRAWN: MLB	CHECKED: --
DATE: Jan 30, 2014	SCALE: AS SHOWN

Spread:7 Map: 73 of 123



Proposed Pipeline - Sandpiper	Milepost - Sandpiper	Tract Boundary
Existing Enbridge Pipelines	Potential Block Valve	Facility Boundary
Foreign Pipes	Environmental Survey Area (ESA)	Previously Sited Facility Boundary
Transmission Lines		Section Lines
SPREAD BREAK		

500 250 0 500 1,000 Feet

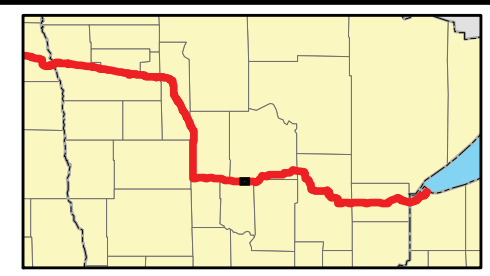
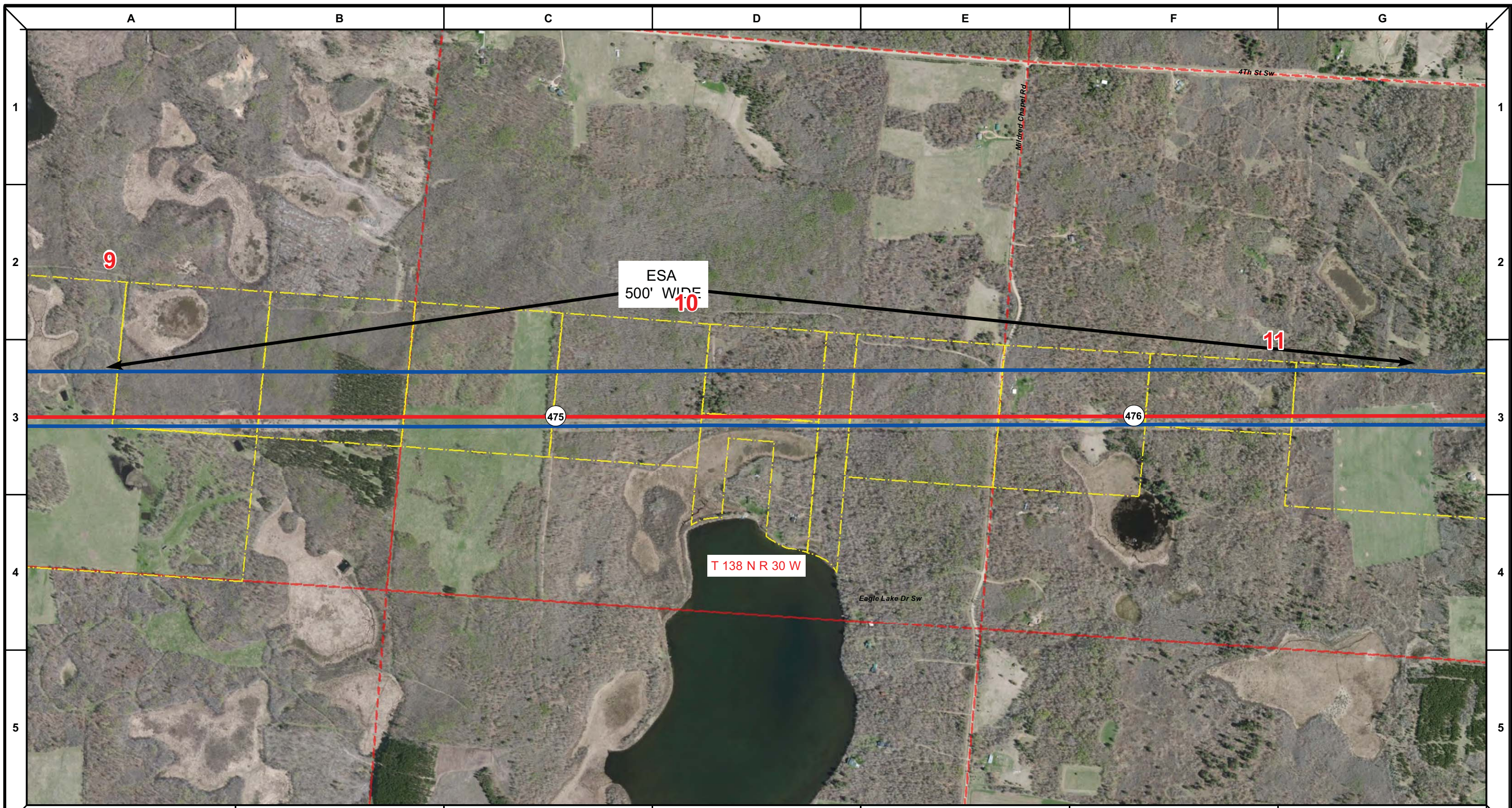
DRAWN	CHECKED	APPROVED	DATE	REV NO.	DESCRIPTION
			1/29/14	2	PUC Update - Revision D-2 Alignment
			12/19/13	1	PUC Update - Revision D Alignment
			10/10/13	0	PUC Submittal

NORTH DAKOTA PIPELINE COMPANY LLC

PROPOSED SANDPIPER PIPELINE PROJECT
ROUTE MAP
Cass County, MN

DRAWN: MLB	CHECKED: -
DATE: Jan 30, 2014	SCALE: AS SHOWN

Spread:7 Map: 73 of 123



Proposed Pipeline - Sandpiper	Milepost - Sandpiper	Tract Boundary
Existing Enbridge Pipelines	Potential Block Valve	Facility Boundary
Foreign Pipes	Environmental Survey Area (ESA)	Previously Sited Facility Boundary
Transmission Lines		Section Lines
SPREAD BREAK		

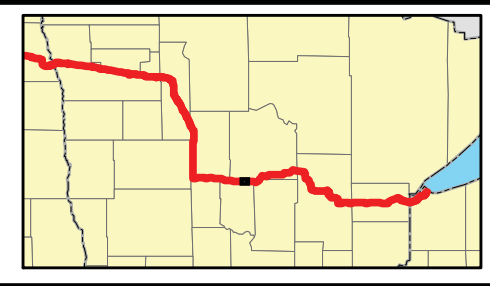
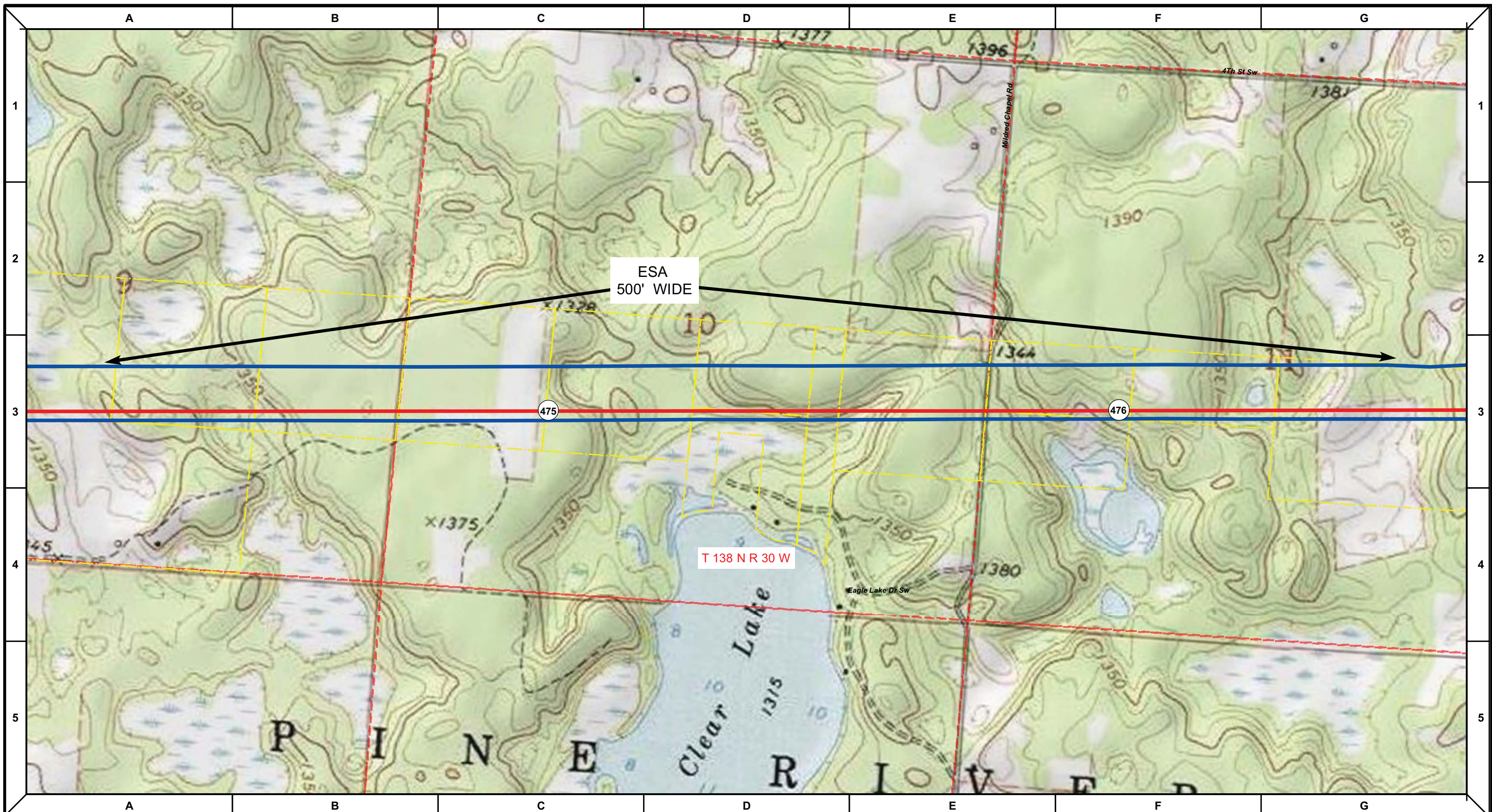
DRAWN	CHECKED	APPROVED	DATE	REV NO.	DESCRIPTION
			1/29/14	2	PUC Update - Revision D-2 Alignment
			12/19/13	1	PUC Update - Revision D Alignment
			10/10/13	0	PUC Submittal

NORTH DAKOTA PIPELINE COMPANY LLC

PROPOSED SANDPIPER PIPELINE PROJECT
ROUTE MAP
Cass County, MN

DRAWN: <i>MLB</i>	CHECKED: <i>--</i>
DATE: <i>Jan 30, 2014</i>	SCALE: <i>AS SHOWN</i>

Spread: 7 Map: 74 of 123



Proposed Pipeline - Sandpiper	Milepost - Sandpiper	Tract Boundary
Existing Enbridge Pipelines	Potential Block Valve	Facility Boundary
Foreign Pipes	Environmental Survey Area (ESA)	Previously Sited Facility Boundary
Transmission Lines		Section Lines
SPREAD BREAK		

500 250 0 500 1,000 Feet

DRAWN	CHECKED	APPROVED	DATE	REV NO.	DESCRIPTION
MLB			1/29/14	2	PUC Update - Revision D-2 Alignment
MLB			12/19/13	1	PUC Update - Revision D Alignment
MLB			10/10/13	0	PUC Submittal

NORTH DAKOTA PIPELINE COMPANY LLC

PROPOSED SANDPIPER PIPELINE PROJECT
ROUTE MAP
Cass County, MN

DRAWN: MLB	CHECKED: -
DATE: Jan 30, 2014	SCALE: AS SHOWN

Spread:7 Map: 74 of 123