

Data Source(s): Westwood (2022); ESRI WMS
USGS Topographic & World Streets Basemaps
(Accessed 2021).

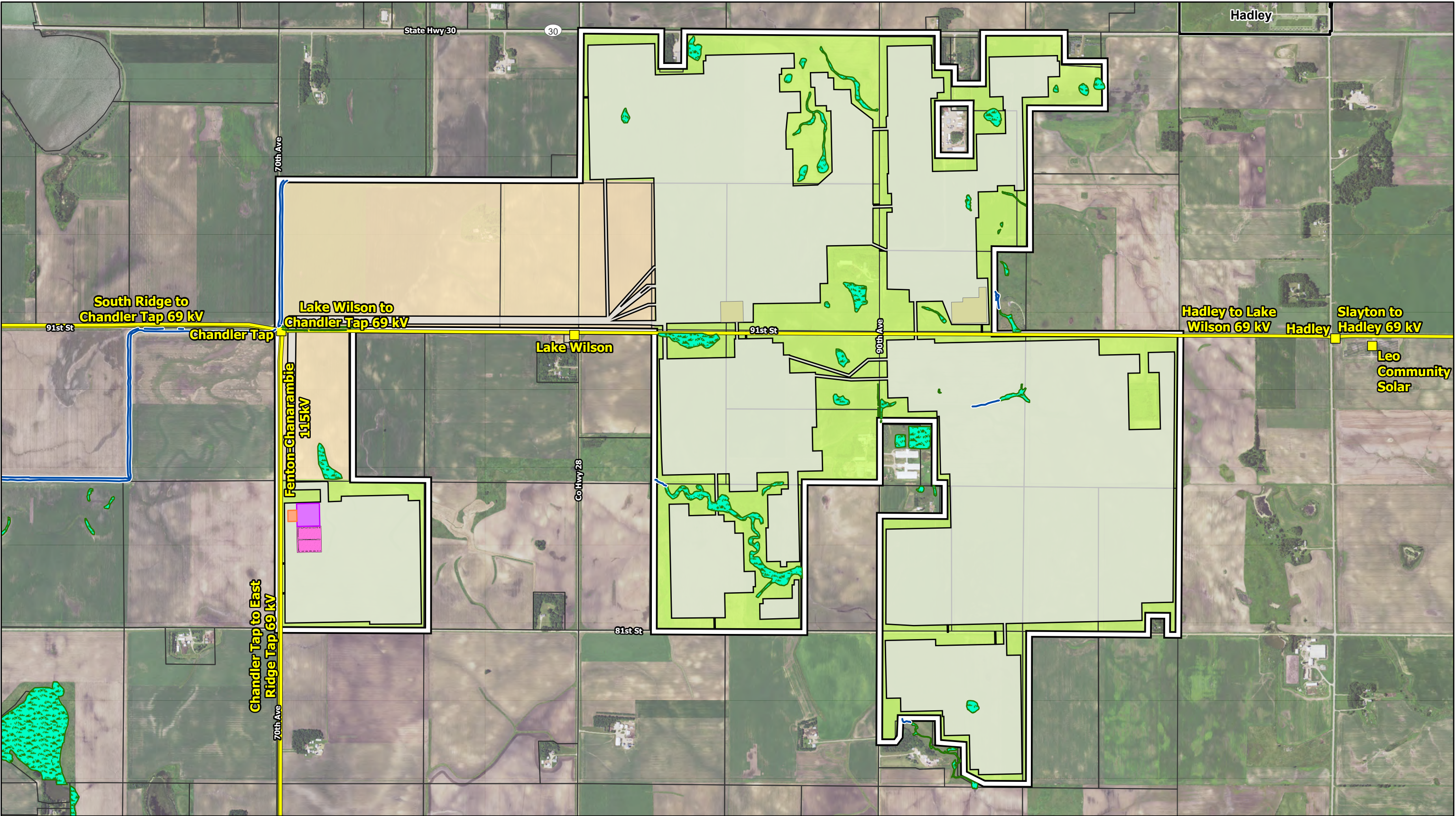
- Legend**
- Project Area
 - County Boundary
 - City/Civil Township Boundary
 - PLS Township
 - PLS Section

Westwood
Toll Free (888) 937-5150 westwoodps.com
Westwood Professional Services, Inc.



Lake Wilson Solar Project
Murray County, Minnesota
Project Location

FIGURE 1 (November, 2022)

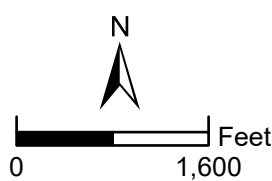


Data Source(s): Westwood (2022); NAIP (2019); U.S. Census Bureau (2020); Ventyx Velocity Suite (2021); MNDOT (2021); USFWS NWI (2016); USGS NHD (2015). Existing pipeline routes are approximate.



Legend

- | | | | | |
|------------------------------|--|---------------------------------|--|----------------------------|
| Project Area | Proposed Substation | Field Delineated Waterway | Participating - Transmission Agreement | Existing Transmission Line |
| Preliminary Development Area | Proposed Battery Energy Storage System | Field Delineated Wetland | Parcel Boundary | |
| Proposed Switchyard | Proposed Laydown Yard | Participating - Solar Agreement | Municipal Boundary | |
| | | | Existing Substation | |



Lake Wilson Solar Project
Murray County, Minnesota
Land Rights & Preliminary Development Area
FIGURE 2 (November, 2022)



Data Source(s): Westwood (2023); ESRI WMS Imagery Basemap (Accessed 2021); U.S. Census Bureau (2020).



Legend

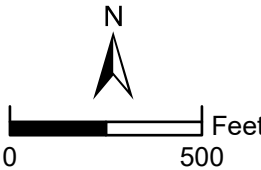
- Project Area
- Point of Interconnection (POI)
- Project Gen-Tie Line
- Proposed Trackers

- Preliminary Development Area
- Array Fence
- Proposed Inverter
- AC Feeder

- Access Road
- Proposed Switchyard
- Proposed Substation
- Proposed Battery Energy Storage System

- Proposed O&M Facility
- Proposed Laydown Yard
- Fenton-Chanarambie 115kV Transmission Line

- Field Delineated Waterway
- Field Delineated Wetland

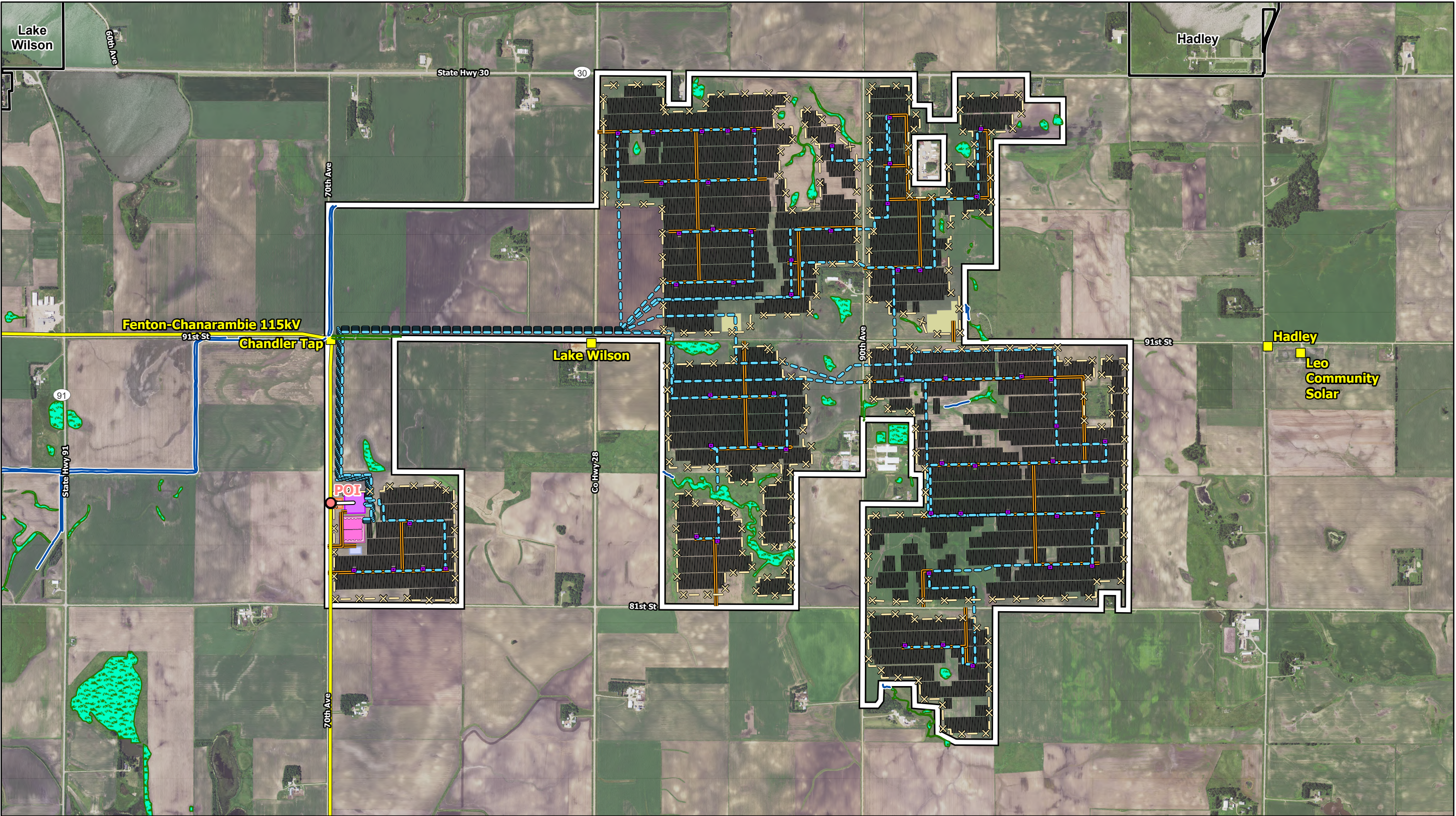


Lake Wilson Solar Project

Murray County, Minnesota

Project Interconnection Facilities

FIGURE 3 (January, 2023)



Data Source(s): Westwood (2023); NAIP (2019); U.S. Census Bureau (2020); Ventyx Velocity Suite (2021); MNDOT (2021); USFWS NWI (2016); USGS NHD (2015). Existing pipeline routes are approximate.

Westwood

Toll Free (888) 937-5150 westwoodps.com
Westwood Professional Services, Inc.

Legend

- Project Area
- Point of Interconnection (POI)
- Project Gen-Tie Line

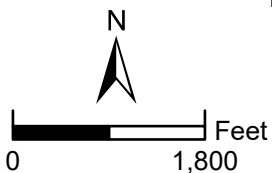
- Proposed Trackers
- Array Fence
- Access Road
- AC Feeder

- Proposed Inverter
- Proposed Switchyard
- Proposed Substation

- Proposed Battery Energy Storage System
- Proposed O&M Facility
- Proposed Laydown Yard

- Field Delineated Waterway
- Field Delineated Wetland
- Municipal Boundary

- Existing Substation
- Fenton-Chanarambie 115kV Transmission Line

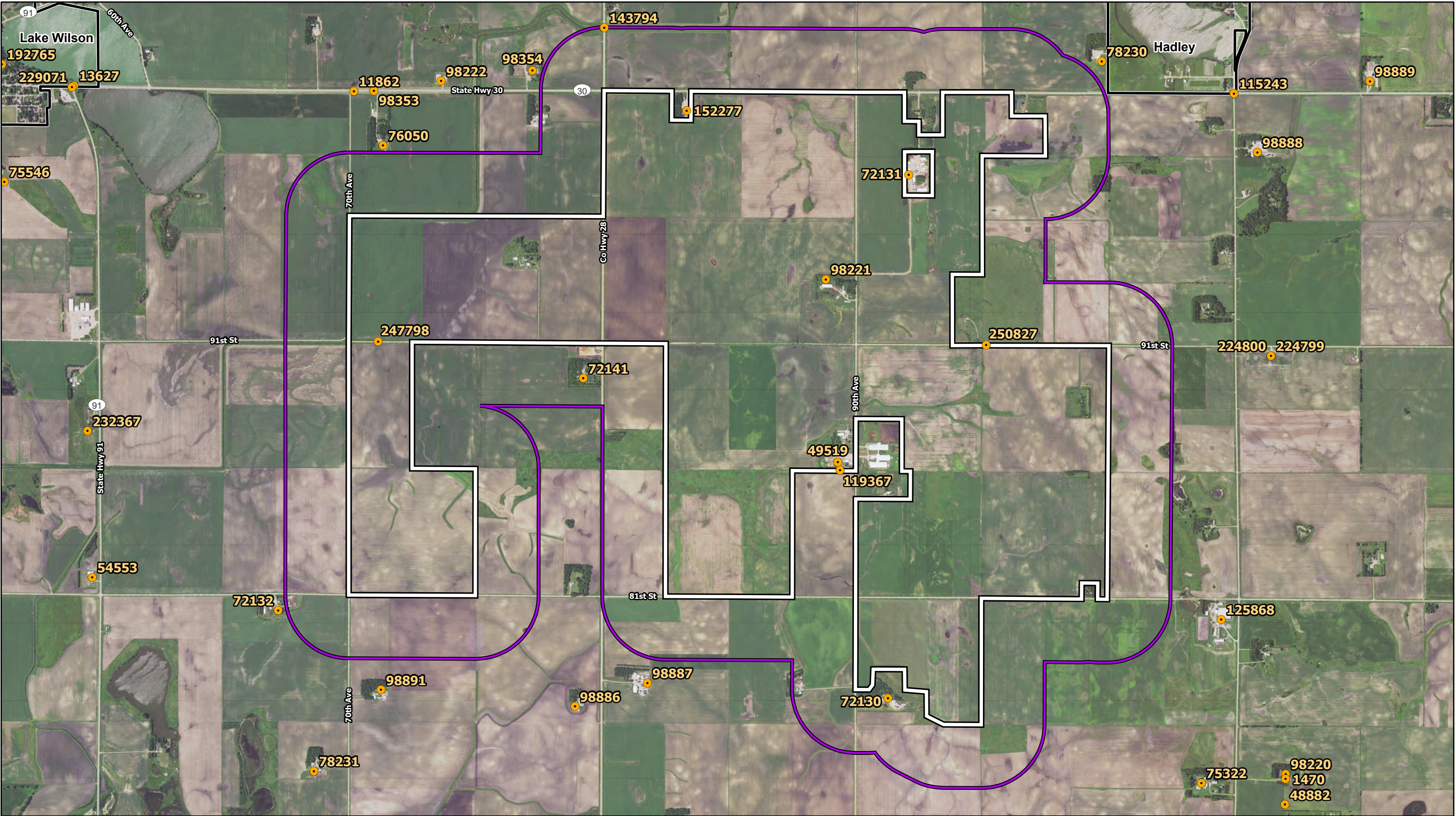


Lake Wilson Solar Project

Murray County, Minnesota

Preliminary
Facility Design

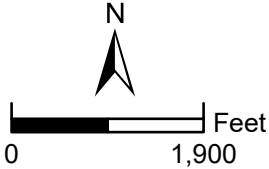
FIGURE 4 (January, 2023)



Data Source(s): Westwood (2022); NAIP (2019); U.S. Census Bureau (2020); MN Geospatial Commons (2021).

Legend

- Project Area
- Project Area 1/4-Mile Buffer
- Municipal Boundary
- MPCA Site



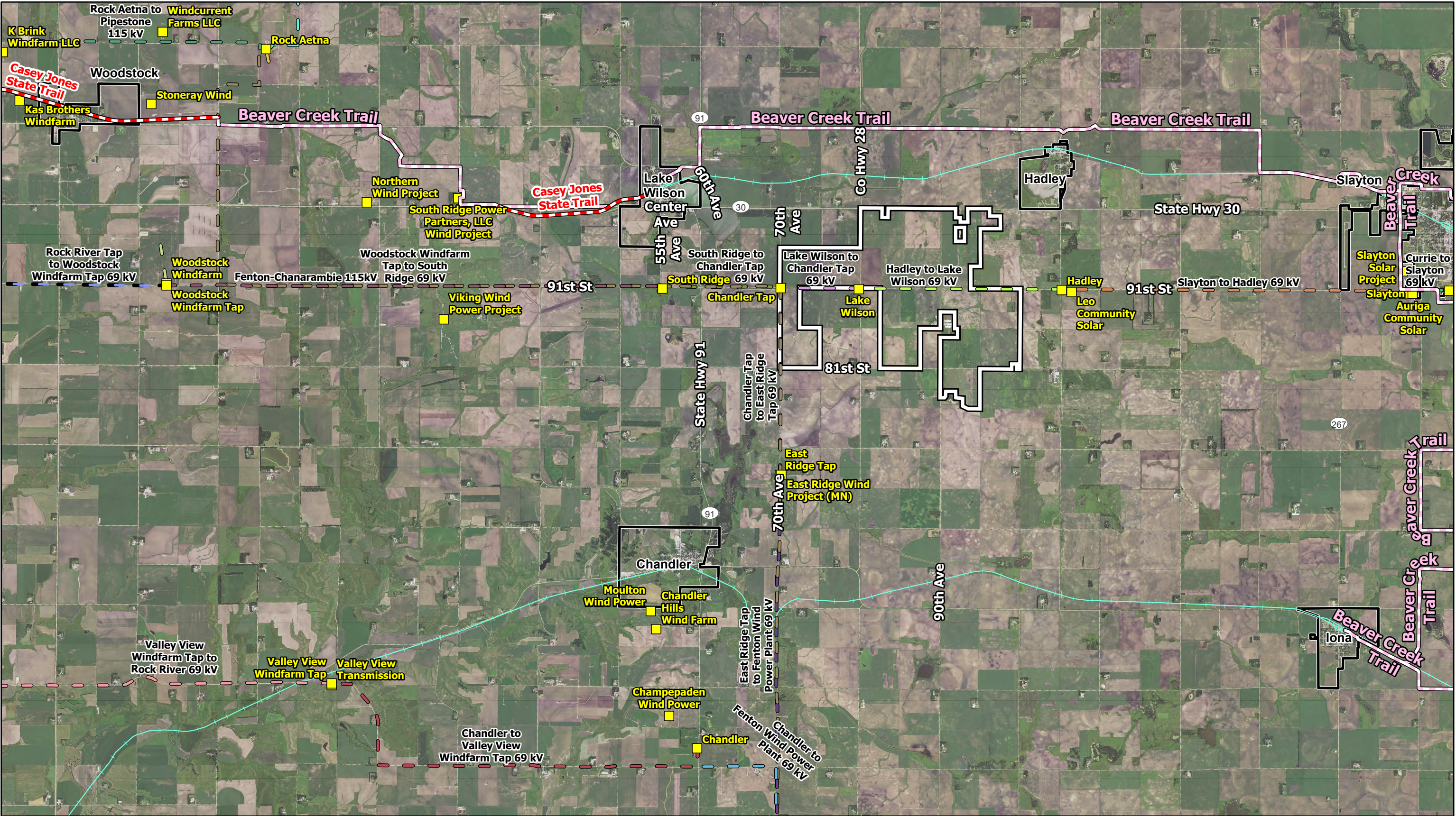
Lake Wilson Solar Project

Murray County, Minnesota

MPCA Sites in Project Vicinity

FIGURE 5 (November, 2022)

Map Document: N:\0012861_01\GIS\ArcPro\LakeWilson_SPA\Exhibits_210830\001286101_040_SPAExhibits_220209.aprx 11/1/2022 10:04 AM EMBolsen



Data Source(s): Westwood (2023); Minnesota NAIIP Imagery (2019); U.S. Census Bureau (2021); Ventyx Velocity Suite, Ventyx Energy LLC. (2021); MNDOT (2021); NPMS (2021). Existing pipeline routes are approximate.

Legend

Project Area

Existing Substation

Snowmobile Trail

State Trail

Abandoned Rail

Municipal Boundary

Name

Chanarambie Station to Chanarambie 4 kV

Chandler Tap to East Ridge Tap 69 kV

Chandler to Fenton Wind Power Plant 69 kV

Chandler to Valley View Windfarm Tap 69 kV

Currie to Slayton 69 kV

East Ridge Tap to East Ridge Wind Project (MN) 69 kV

East Ridge Tap to Fenton Wind Power Plant 69 kV

Fenton-Chanarambie 115kV

Hadley to Lake Wilson 69 kV

Lake Wilson to Chandler Tap 69 kV

Rock Aetna to Lake Yankton 115 kV

Rock Aetna to Pipestone 115 kV

Rock River Tap to Woodstock Windfarm Tap 69 kV

Slayton to Hadley 69 kV

South Ridge to Chandler Tap 69 kV

Valley View Windfarm Tap to Rock River 69 kV

Valley View Windfarm Tap to Valley View Transmission 69 kV

Woodstock Windfarm Tap to South Ridge 69 kV

Woodstock Windfarm Tap to Woodstock Windfarm 69 kV

Woodstock Windfarm to Woodstock Windfarm 4 kV

Westwood

Toll Free (888) 937-5150 westwoodps.com
Westwood Professional Services, Inc.

Lake Wilson Solar Project

Murray County, Minnesota

Existing Infrastructure

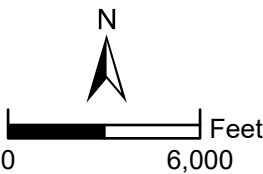
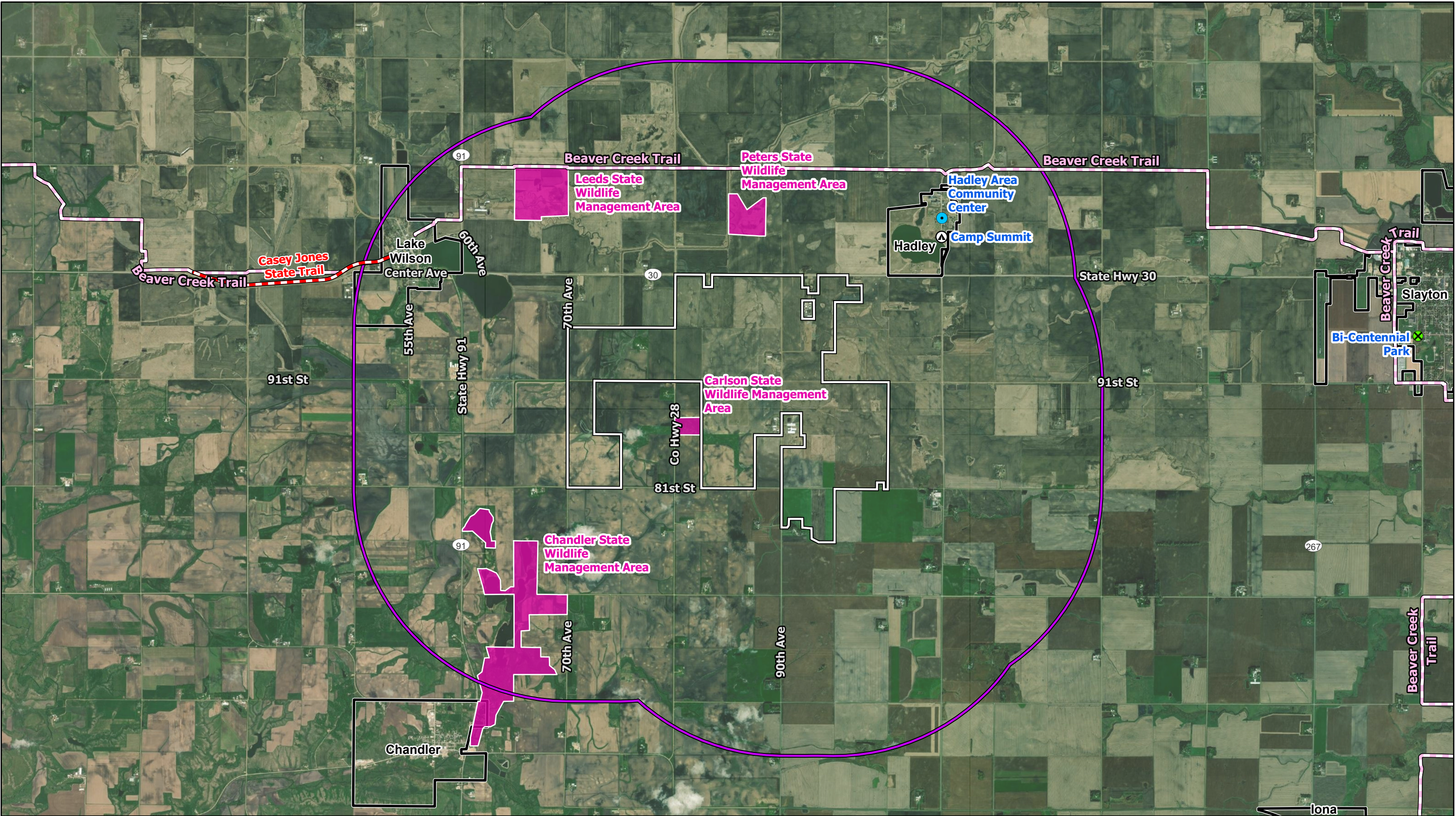


FIGURE 6 (January, 2023)



Data Source(s): Westwood (2022); ESRI WMS Imagery Basemap (Accessed 2021); U.S. Census Bureau (2021); Google Earth (2021); MN Geospatial Commons (2021).

Legend

- | | | |
|----------------------------|--------------------------|--------------------|
| Project Area | Park | Municipal Boundary |
| Project Area 2-Mile Buffer | State Trail | County Boundary |
| Campground | Snowmobile Trail | |
| Community Center | Wildlife Management Area | |

Westwood
Toll Free (888) 937-5150 westwoodps.com
Westwood Professional Services, Inc.

Lake Wilson Solar Project

Murray County, Minnesota

Recreational Resources

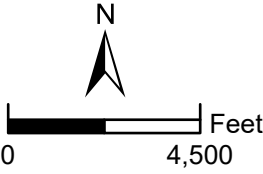


FIGURE 7 (November, 2022)