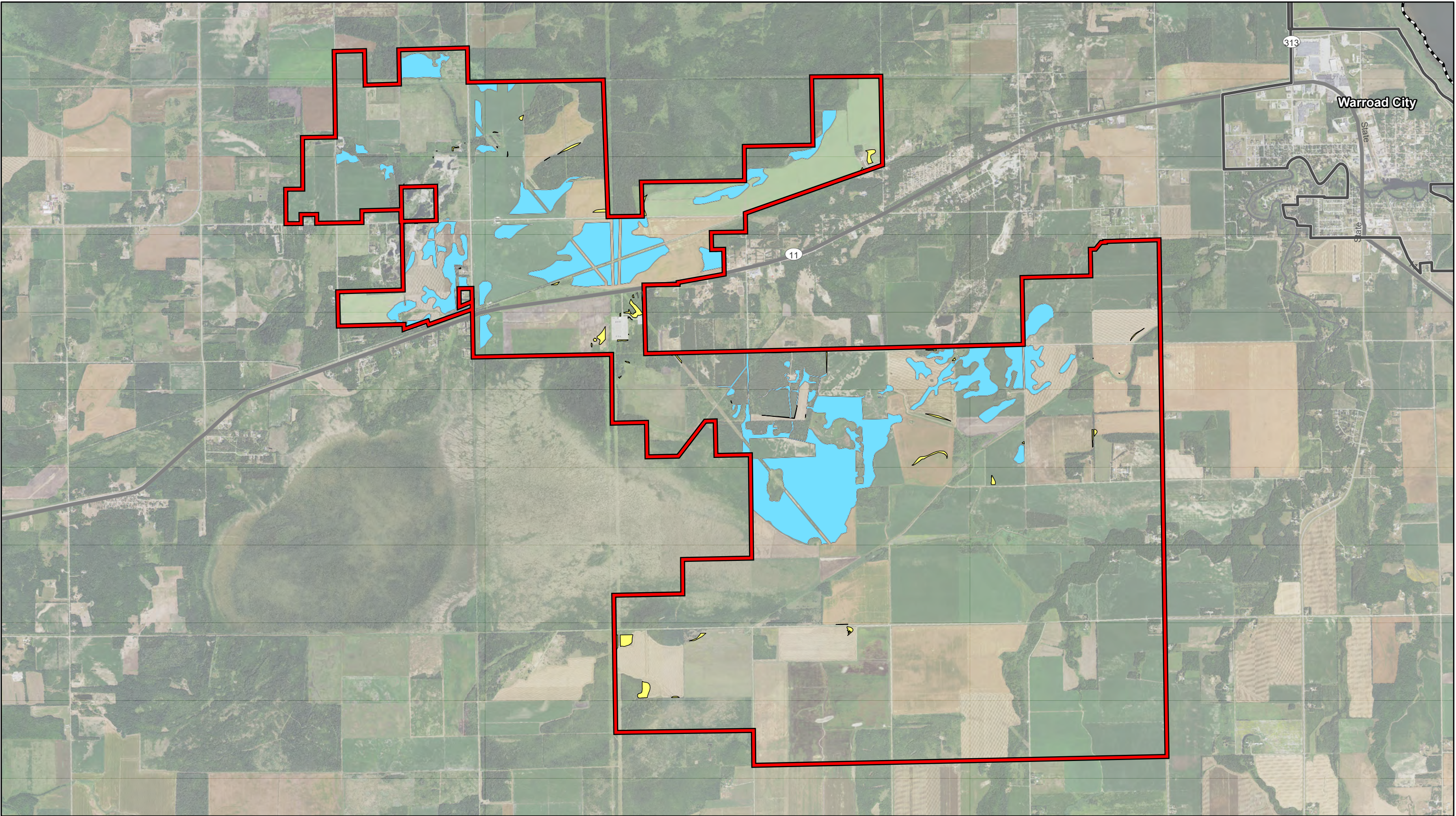







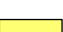
Map Document: N:\001\2861_01\GIS\ArcPro\1W_Invenery\PrimeFarm\Exhibits_211012\1W_PrimeFarm_Constraints_220104.aprx 9/30/2022 6:24 AM EMB:Boisen



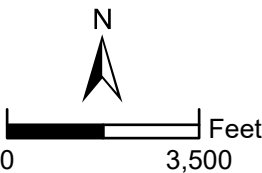
Data Source(s): Westwood (2022); ESRI WMS Imagery Basemap (Accessed 2022); U.S. Census Bureau (2020); MN Geospatial Commons (2021).

Legend

-  Hat Trick Site
-  Major Road
-  Municipal Boundary
-  County Boundary

-  Buildable Area - 969.40 Acres
-  Unviable Buildable Area - 35.61 Acres

Westwood
Toll Free (888) 937-5150 westwoodps.com
Westwood Professional Services, Inc.

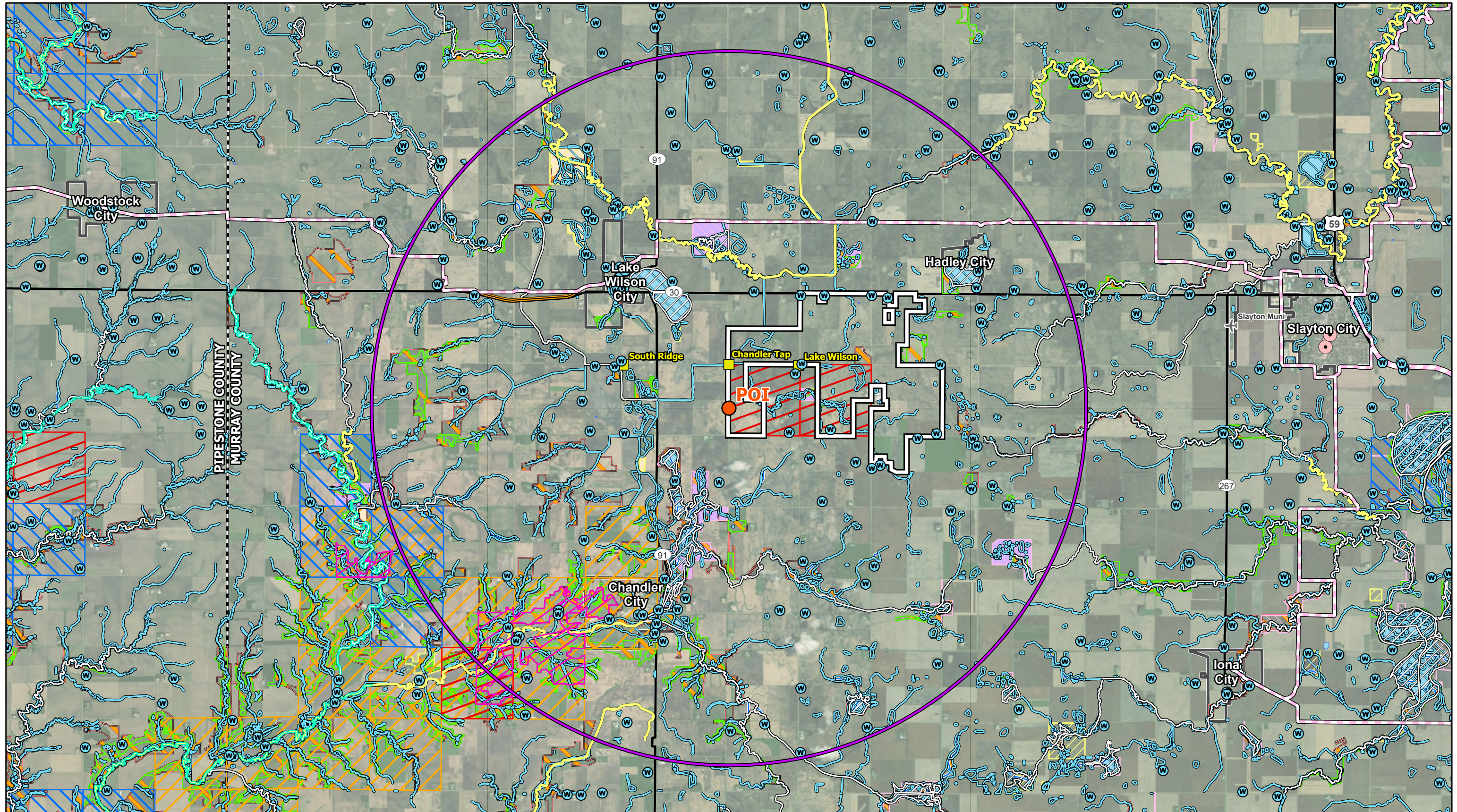


Lake Wilson Solar Project

Murray County, Minnesota

Buildable Area

FIGURE 10b (September, 2022)

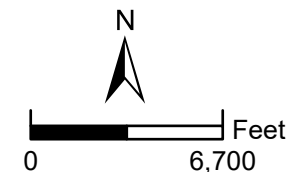


Data Source(s): Westwood (2022); ESRI WMS Imagery Basemap (Accessed 2021); U.S. Census Bureau (2020); MNDNR (2021); U.S. Geological Survey (2020); USFWS (2021); Venturix Velocity Suite (2021); USGS NHD (2015); PAD-US (2021).

Westwood
Toll Free (888) 937-5150 westwoodps.com
Westwood Professional Services, Inc.

Legend

- | | | | | | |
|---------------------------------------|------------------|-----------------|---------------------------------------|---|---------------------|
| Project Area | NRHP Point | NWI Wetland | Native Plant Community | Dakota Skipper/Poweshiek Skipperling Critical Habitat | Invertebrate Animal |
| Project Point of Connection (POI) | Airport | NHD Flowline | Minnesota Wildlife Management Area | Topeka Shiner Critical Habitat | Major Road |
| POI 5-Mile Buffer | Snowmobile Trail | NHD Waterbody | MBS Site of Biodiversity Significance | Vascular Plant | Municipal Boundary |
| Existing Substation Near Project Area | State Trail/Road | Impaired Stream | NCED Easement Location | Vertebrate Animal | County Boundary |
| Water Well | PWI Watercourse | PWI Basin | | | |
- PADUS Designation Type**
- Conservation Easement
 - State Conservation Easement

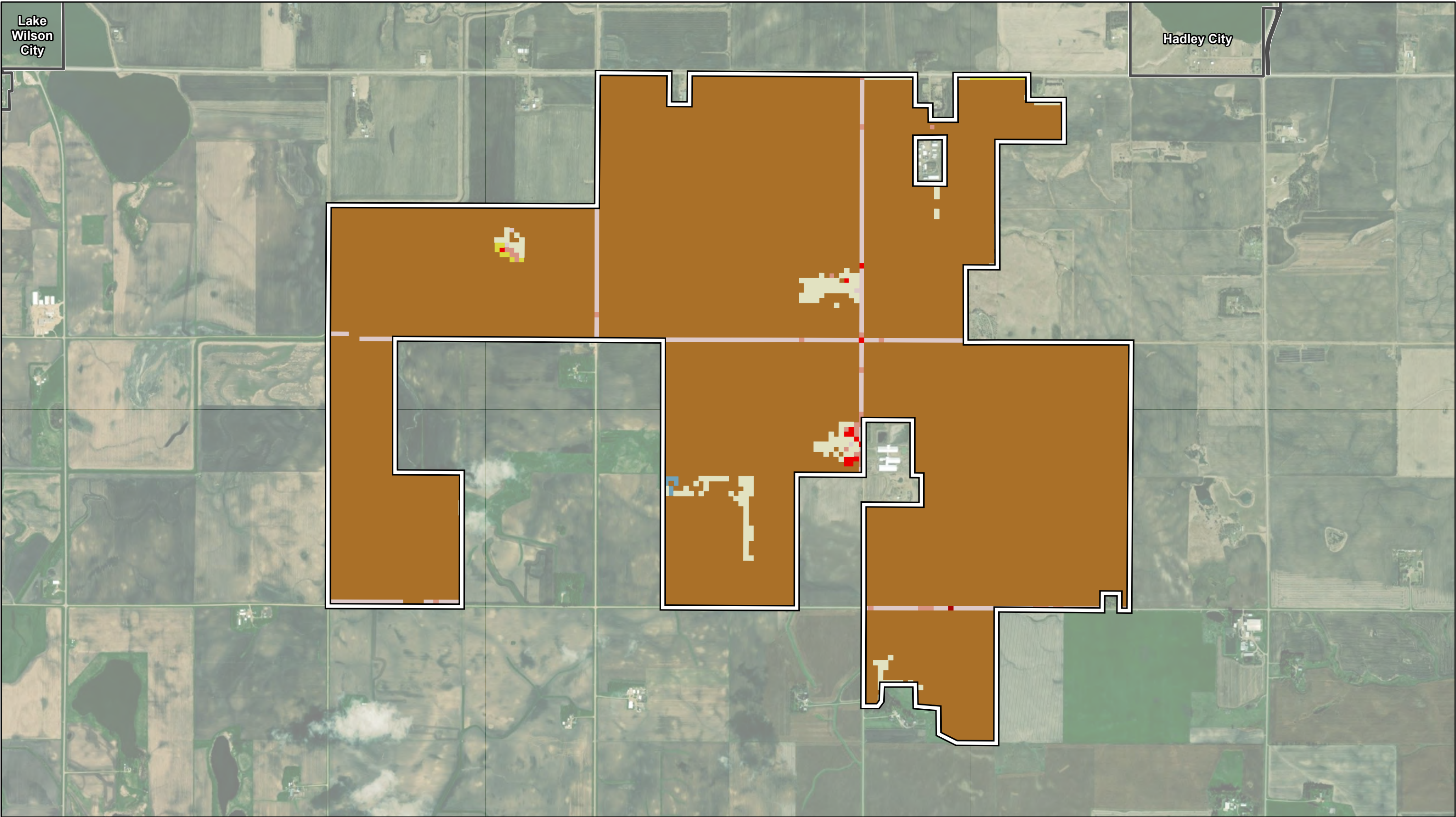


Lake Wilson Solar Project

Murray County, Minnesota




Lake Wilson Solar Site
& POI Constraints

FIGURE 11 (November, 2022)








Data Source(s): Westwood (2022); ESRI WMS Imagery Basemap (Accessed 2021); U.S. Census Bureau (2020); MNDNR (2021); NLCD (2019).



Legend

-  Project Area
-  Municipal Boundary
-  County Boundary

NLCD Land Cover

-  Barren Land
-  Cultivated Crops
-  Deciduous Forest

-  Developed, High Intensity
-  Developed, Low Intensity

-  Developed, Medium Intensity
-  Developed, Open Space

-  Emergent Herbaceous Wetlands
-  Grassland/Herbaceous
-  Pasture/Hay



Lake Wilson Solar Project

Murray County, Minnesota

Lake Wilson
Land Cover

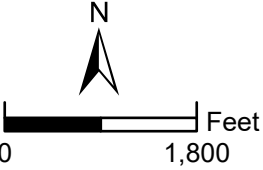
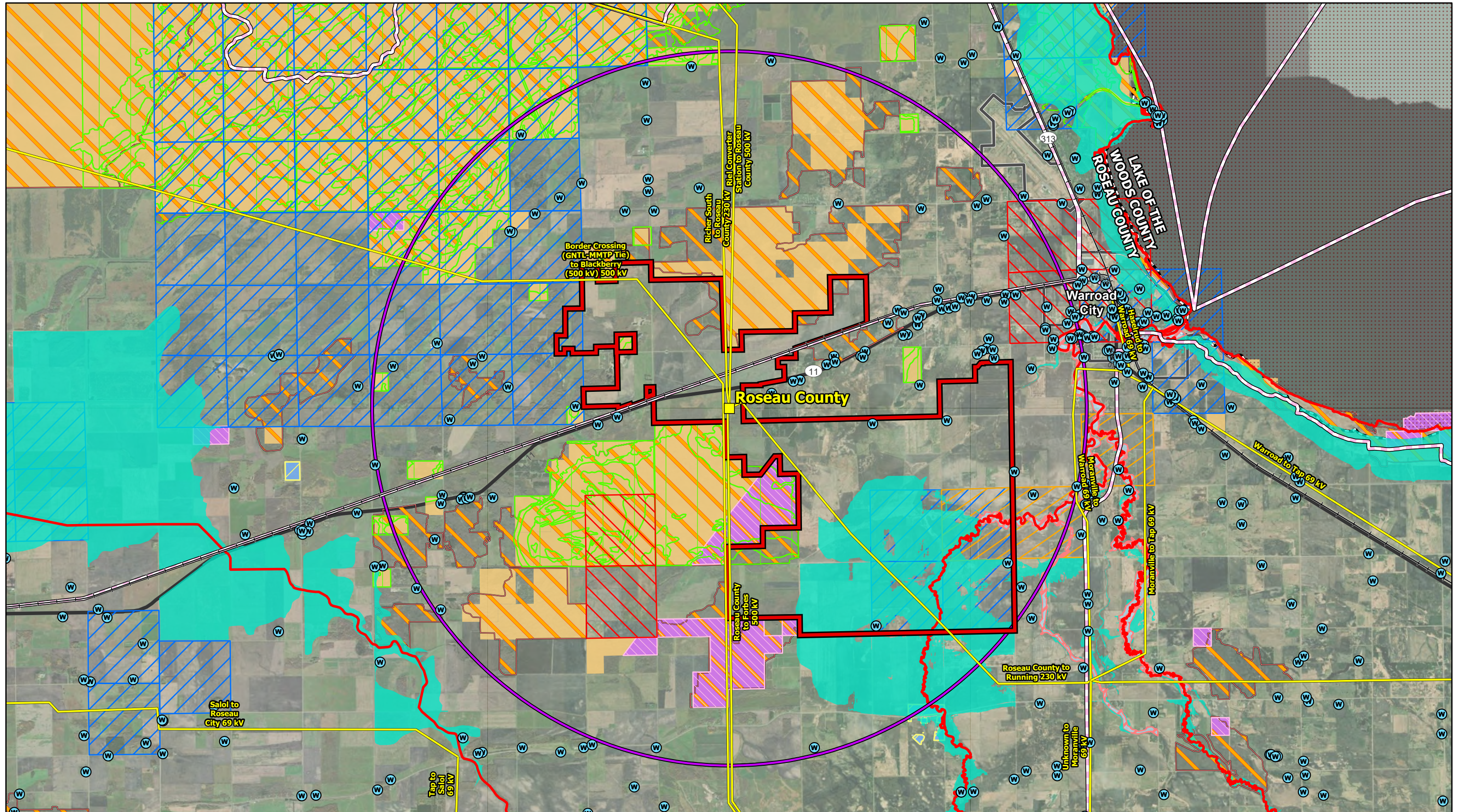


FIGURE 11a (October, 2022)

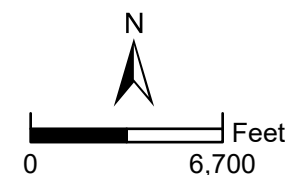


Data Source(s): Westwood (2022); ESRI WMS Imagery Basemap (Accessed 2021); U.S. Census Bureau (2020); MNDNR (2021); U.S. Geological Survey (2020); USFWS (2021); Ventrix Velocity Suite (2021); USGS NHD (2015); PAD-US (2021).



Legend

- | | | | | |
|------------------------------|-----------------|------------------------|---------------------------------------|------------------------------------|
| Hat Trick Site | Impaired Stream | NHD Waterbody | NCED Easement Location | Minnesota Wildlife Management Area |
| Roseau County Substation POI | Impaired Lake | 1% Annual Flood Chance | Conservation Easement | County Boundary |
| Existing Transmission Line | PWI Watercourse | Floodway | State Conservation Area | Municipal Boundary |
| Water Well | PWI Basin | Invertebrate Animal | State Resource Management Area | Major Road |
| Snowmobile Trail | NWI Wetland | Vascular Plant | Native Plant Community | Railroad |
| 5-Mile Search Buffer | NHD Flowline | Vertebrate Animal | MBS Site of Biodiversity Significance | |

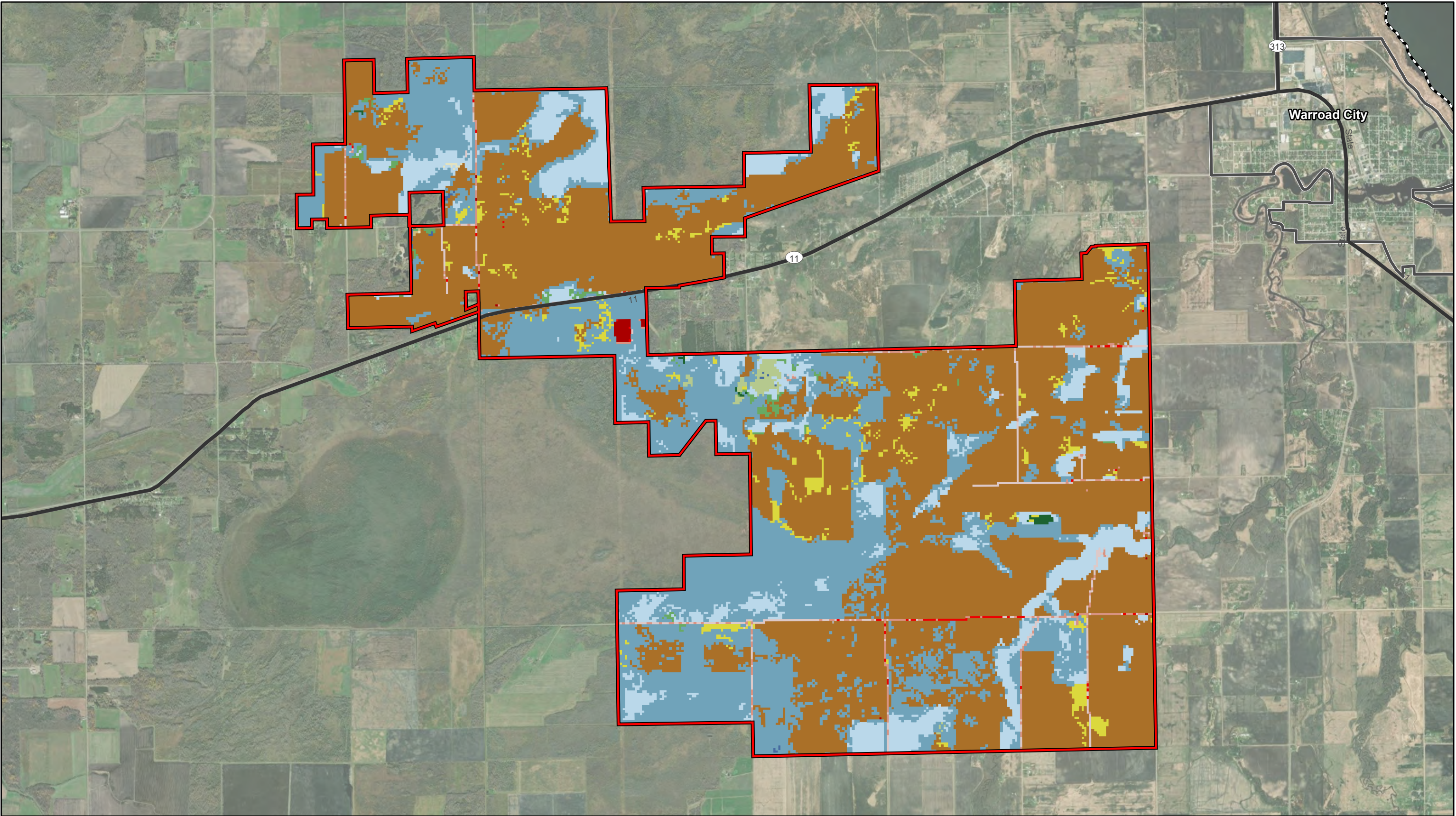


Lake Wilson Solar Project

Murray County, Minnesota

Hat Trick Site & Roseau
County Substation Constraints

FIGURE 12 (September, 2022)



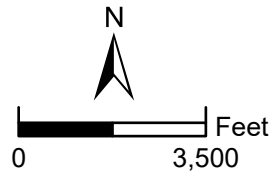
Data Source(s): Westwood (2022); ESRI WMS Imagery Basemap (Accessed 2021); U.S. Census Bureau (2020); MNDNR (2021); NLCD (2019).

Legend

- | | | | |
|------------------------|-----------------------------|------------------------------|----------------|
| Hat Trick Site | Cultivated Crops | Emergent Herbaceous Wetlands | Shrub/Scrub |
| Major Road | Deciduous Forest | Evergreen Forest | Woody Wetlands |
| Municipal Boundary | Developed, High Intensity | Hay/Pasture | |
| County Boundary | Developed, Low Intensity | Herbaceous | |
| NLCD Land Cover | Developed, Medium Intensity | Mixed Forest | |
| Barren Land | Developed, Open Space | Open Water | |

Westwood

Toll Free (888) 937-5150 westwoodps.com
Westwood Professional Services, Inc.

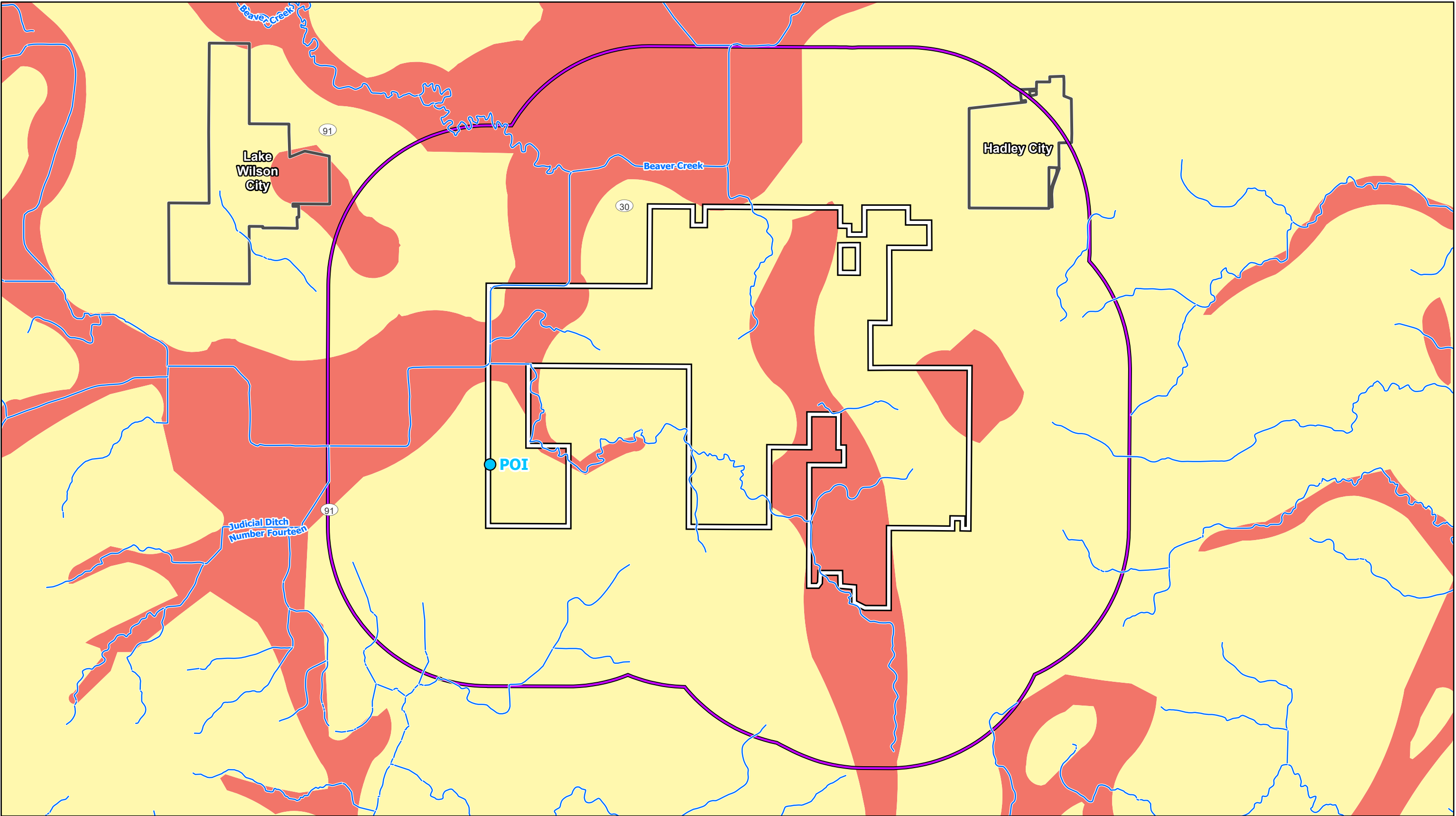


Lake Wilson Solar Project

Murray County, Minnesota







Hat Trick Site
Land Cover

FIGURE 12a (September, 2022)





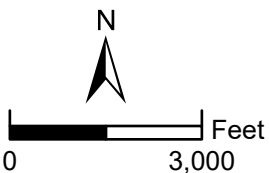
Data Source(s): Westwood (2022); NAIP (2019); U.S. Census Bureau (2020); MN Geospatial Commons (2021); MNDNR (2021); USGS NHD (2021).

Legend

- | | |
|---|---|
|  Project Area |  County Boundary |
|  Project Area 1-Mile Buffer |  NHD Flowline |
|  Project Point of Connection (POI) | |
|  Municipal Boundary | |

Sensitivity Ratings: Estimated Travel Time for Water-Borne Surface Contaminants to Reach the Water Table

- | |
|---|
|  Moderate - Years to Decades |
|  Very High - Hours to Months |



Large Lake Wilson Solar Project

Murray County, Minnesota

Sensitivity of Surficial Aquifers to Pollution

FIGURE 13 (November, 2022)