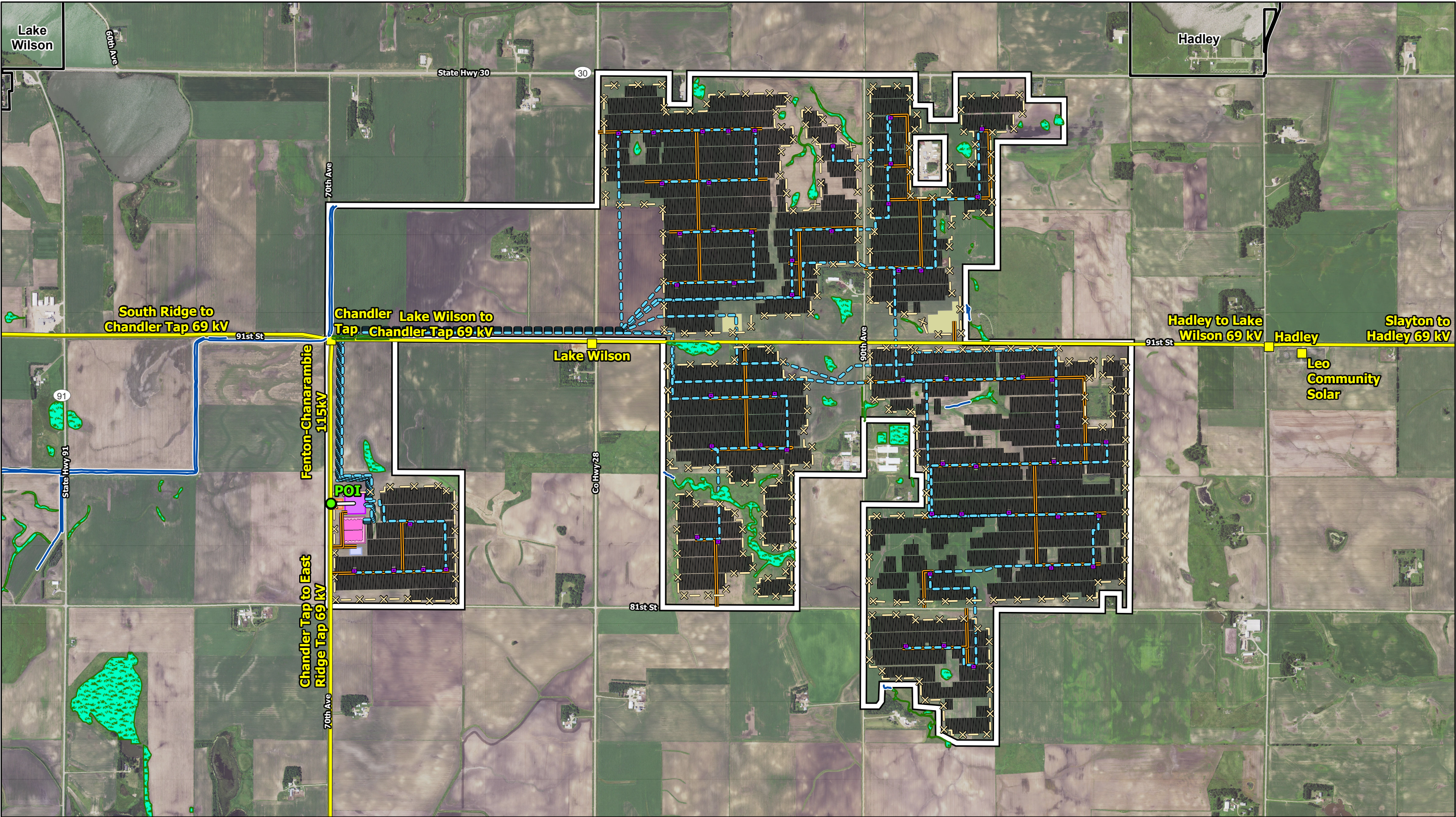


Appendix C – Preliminary Site Plan



Data Source(s): Westwood (2022); NAIP (2019); U.S. Census Bureau (2020); Ventyx Velocity Suite (2021); MNDOT (2021); USFWS NWI (2016); USGS NHD (2015). Existing pipeline routes are approximate.

Legend

- Project Area
- Point of Interconnection (POI)
- Project Gen-Tie Line
- Proposed Trackers

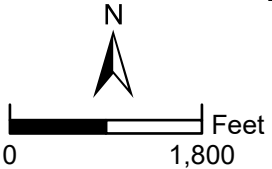
- Array Fence
- Access Road
- AC Feeder
- Proposed Inverter

- Proposed Switchyard
- Proposed Substation
- Proposed Battery Energy Storage System

- Proposed O&M Facility
- Proposed Laydown Yard
- Field Delineated Waterway

- Field Delineated Wetland
- Municipal Boundary
- Existing Substation
- Existing Transmission Line

Westwood
Toll Free (888) 937-5150 westwoodps.com
Westwood Professional Services, Inc.

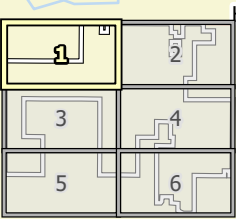


Lake Wilson Solar Project
Murray County, Minnesota
Site Plan Overview
Appendix C (November, 2022)



Data Source(s): Westwood (2022); NAIP (2019); U.S. Census Bureau (2020); Ventyx Velocity Suite (2021); MNDOT (2021); USFWS NWI (2016); USGS NHD (2015). Existing pipeline routes are approximate.

Westwood
Toll Free (888) 937-5150 westwoodps.com
Westwood Professional Services, Inc.



Legend

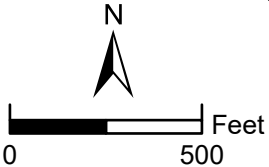
- Project Area
- Point of Interconnection (POI)
- Project Gen-Tie Line
- Proposed Trackers

- Array Fence
- Access Road
- AC Feeder
- Proposed Inverter

- Proposed Switchyard
- Proposed Substation
- Proposed Battery Energy Storage System

- Proposed O&M Facility
- Proposed Laydown Yard
- Field Delineated Waterway

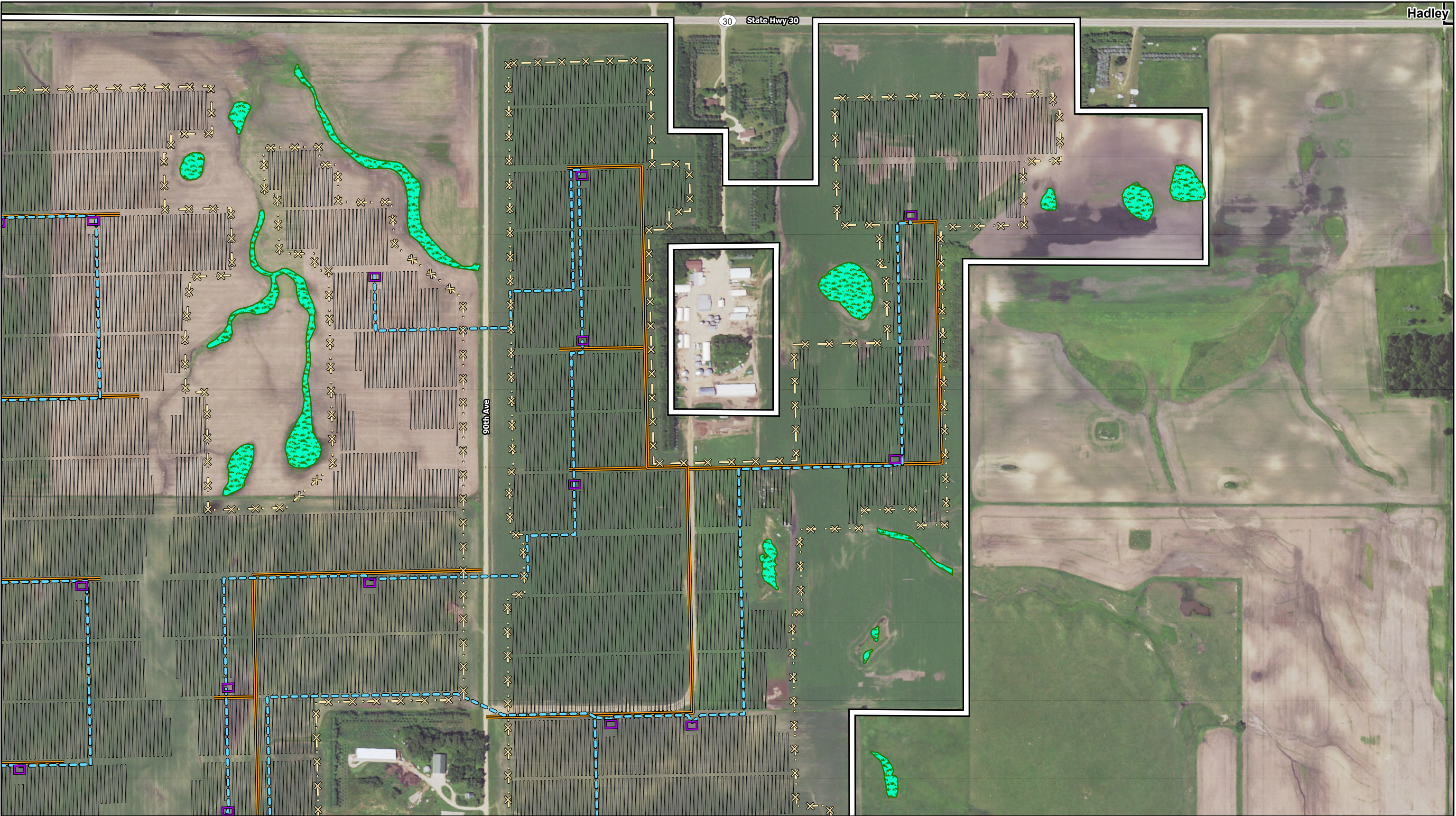
- Field Delineated Wetland
- Municipal Boundary
- Existing Substation
- Existing Transmission Line



Lake Wilson Solar Project

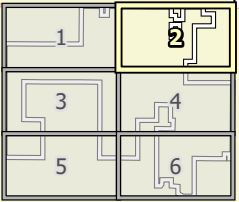
Murray County, Minnesota

Preliminary
Facility Design



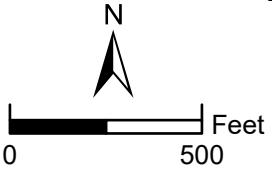
Data Source(s): Westwood (2022); NAIP (2019); U.S. Census Bureau (2020); Ventyx Velocity Suite (2021); MNDOT (2021); USFWS NWI (2016); USGS NHD (2015). Existing pipeline routes are approximate.

Westwood
Toll Free (888) 937-5150 westwoodps.com
Westwood Professional Services, Inc.



Legend

- | | | | | |
|--------------------------------|-------------------|--|---------------------------|----------------------------|
| Project Area | Array Fence | Proposed Switchyard | Proposed O&M Facility | Field Delineated Wetland |
| Point of Interconnection (POI) | Access Road | Proposed Substation | Proposed Laydown Yard | Municipal Boundary |
| Project Gen-Tie Line | AC Feeder | Proposed Battery Energy Storage System | Field Delineated Waterway | Existing Substation |
| Proposed Trackers | Proposed Inverter | | | Existing Transmission Line |

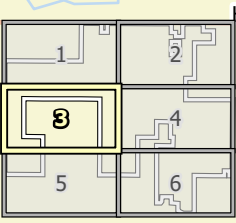


Lake Wilson Solar Project
Murray County, Minnesota
Preliminary Facility Design
Appendix : Page 2 (November, 2022)

Map Document N:\0012861_01\GIS\ArcPro\Map_SPA\Exhibits 2\0830\001286101_040_SPA\Exhibits 2\20209.aprx 11/16/2022 3:32 PM EM/Boisen

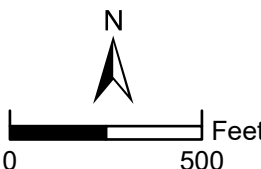


Data Source(s): Westwood (2022); NAIP (2019); U.S. Census Bureau (2020); Ventyx Velocity Suite (2021); MNDOT (2021); USFWS NWI (2016); USGS NHD (2015). Existing pipeline routes are approximate.



Legend

- | | | | | |
|--------------------------------|-------------------|--|---------------------------|----------------------------|
| Project Area | Array Fence | Proposed Switchyard | Proposed O&M Facility | Field Delineated Wetland |
| Point of Interconnection (POI) | Access Road | Proposed Substation | Proposed Laydown Yard | Municipal Boundary |
| Project Gen-Tie Line | AC Feeder | Proposed Battery Energy Storage System | Field Delineated Waterway | Existing Substation |
| Proposed Trackers | Proposed Inverter | | | Existing Transmission Line |



Lake Wilson Solar Project
Murray County, Minnesota
Preliminary Facility Design
Appendix C: Page 3 (November, 2022)