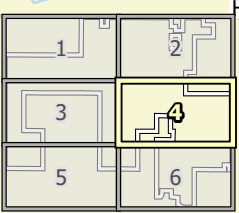
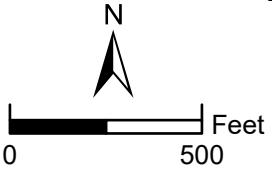


Data Source(s): Westwood (2022); NAIP (2019); U.S. Census Bureau (2020); Ventyx Velocity Suite (2021); MNDOT (2021); USFWS NWI (2016); USGS NHD (2015). Existing pipeline routes are approximate.



Legend

- | | | | | |
|--------------------------------|-------------------|--|---------------------------|----------------------------|
| Project Area | Array Fence | Proposed Switchyard | Proposed O&M Facility | Field Delineated Wetland |
| Point of Interconnection (POI) | Access Road | Proposed Substation | Proposed Laydown Yard | Municipal Boundary |
| Project Gen-Tie Line | AC Feeder | Proposed Battery Energy Storage System | Field Delineated Waterway | Existing Substation |
| Proposed Trackers | Proposed Inverter | | | Existing Transmission Line |



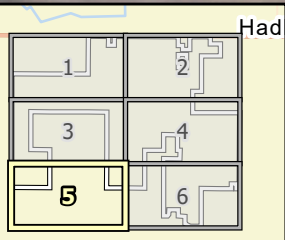
Map Document N:\0012861_01\GIS\ArcPro\LW_SPA\Exhibits_210830\R001286101_040_SPA\Exhibits_220209.aprx 11/16/2022 3:32 PM EMBolsen

© 2022 Westwood Professional Services, Inc.

70th Ave Fenton-Chanarambie 15kV Chandler Tap to East Ridge Tap 69 kV

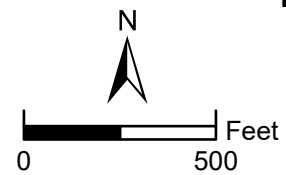
Data Source(s): Westwood (2022); NAIP (2019); U.S. Census Bureau (2020); Ventyx Velocity Suite (2021); MNDOT (2021); USFWS NWI (2016); USGS NHD (2015). Existing pipeline routes are approximate.

Westwood
Toll Free (888) 937-5150 westwoodps.com
Westwood Professional Services, Inc.



Legend

- | | | | | |
|--------------------------------|-------------------|--|---------------------------|----------------------------|
| Project Area | Array Fence | Proposed Switchyard | Proposed O&M Facility | Field Delineated Wetland |
| Point of Interconnection (POI) | Access Road | Proposed Substation | Proposed Laydown Yard | Municipal Boundary |
| Project Gen-Tie Line | AC Feeder | Proposed Battery Energy Storage System | Field Delineated Waterway | Existing Substation |
| Proposed Trackers | Proposed Inverter | | | Existing Transmission Line |

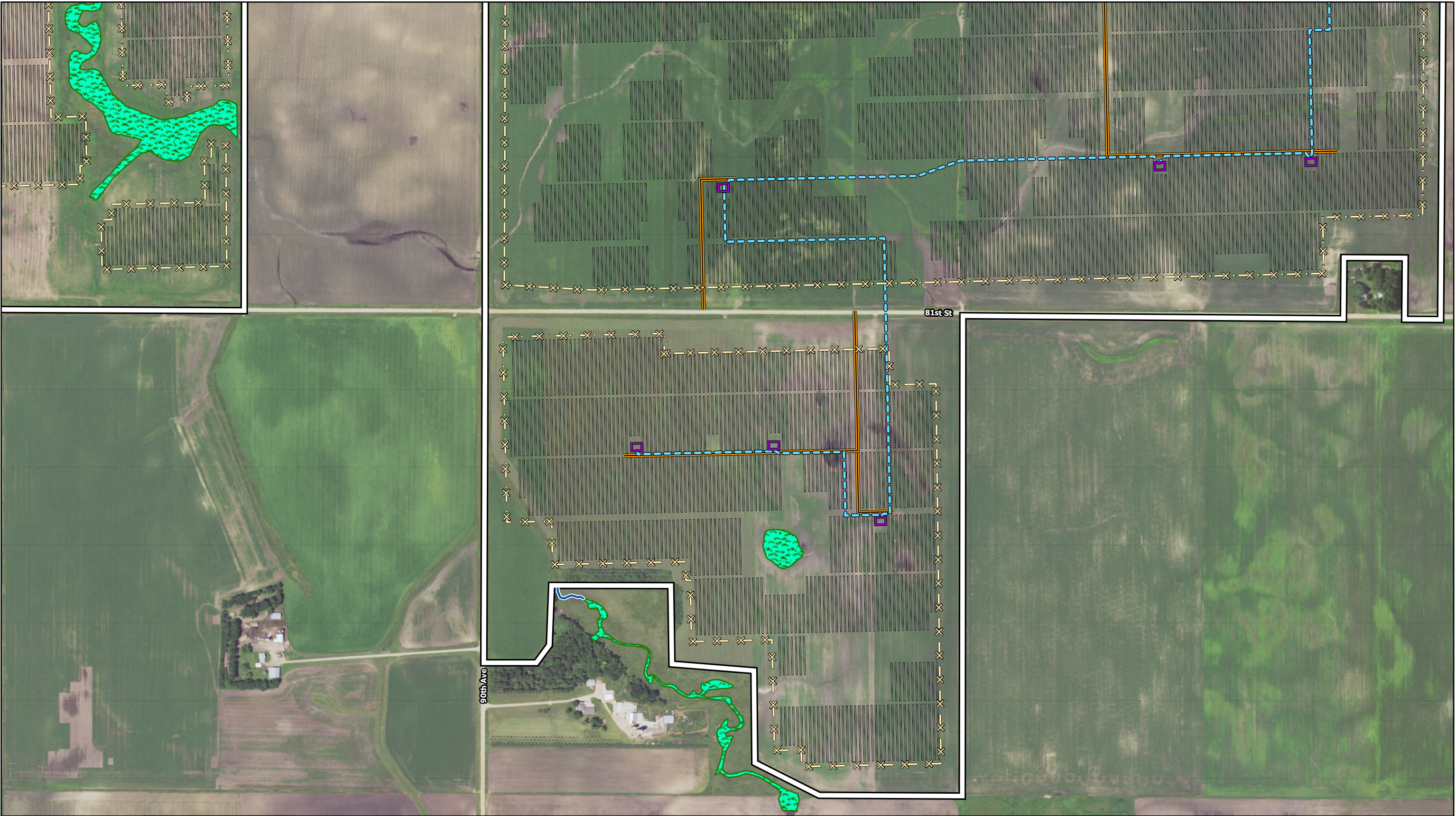


Lake Wilson Solar Project

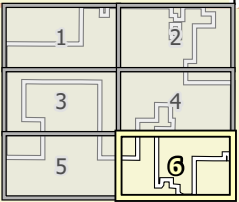
Murray County, Minnesota

Preliminary
Facility Design

Appendix C: Page 5 (November, 2022)



Data Source(s): Westwood (2022); NAIP (2019); U.S. Census Bureau (2020); Ventyx Velocity Suite (2021); MNDOT (2021); USFWS NWI (2016); USGS NHD (2015). Existing pipeline routes are approximate.



Legend

- | | | | | |
|--------------------------------|-------------------|--|---------------------------|----------------------------|
| Project Area | Array Fence | Proposed Switchyard | Proposed O&M Facility | Field Delineated Wetland |
| Point of Interconnection (POI) | Access Road | Proposed Substation | Proposed Laydown Yard | Municipal Boundary |
| Project Gen-Tie Line | AC Feeder | Proposed Battery Energy Storage System | Field Delineated Waterway | Existing Substation |
| Proposed Trackers | Proposed Inverter | | | Existing Transmission Line |

