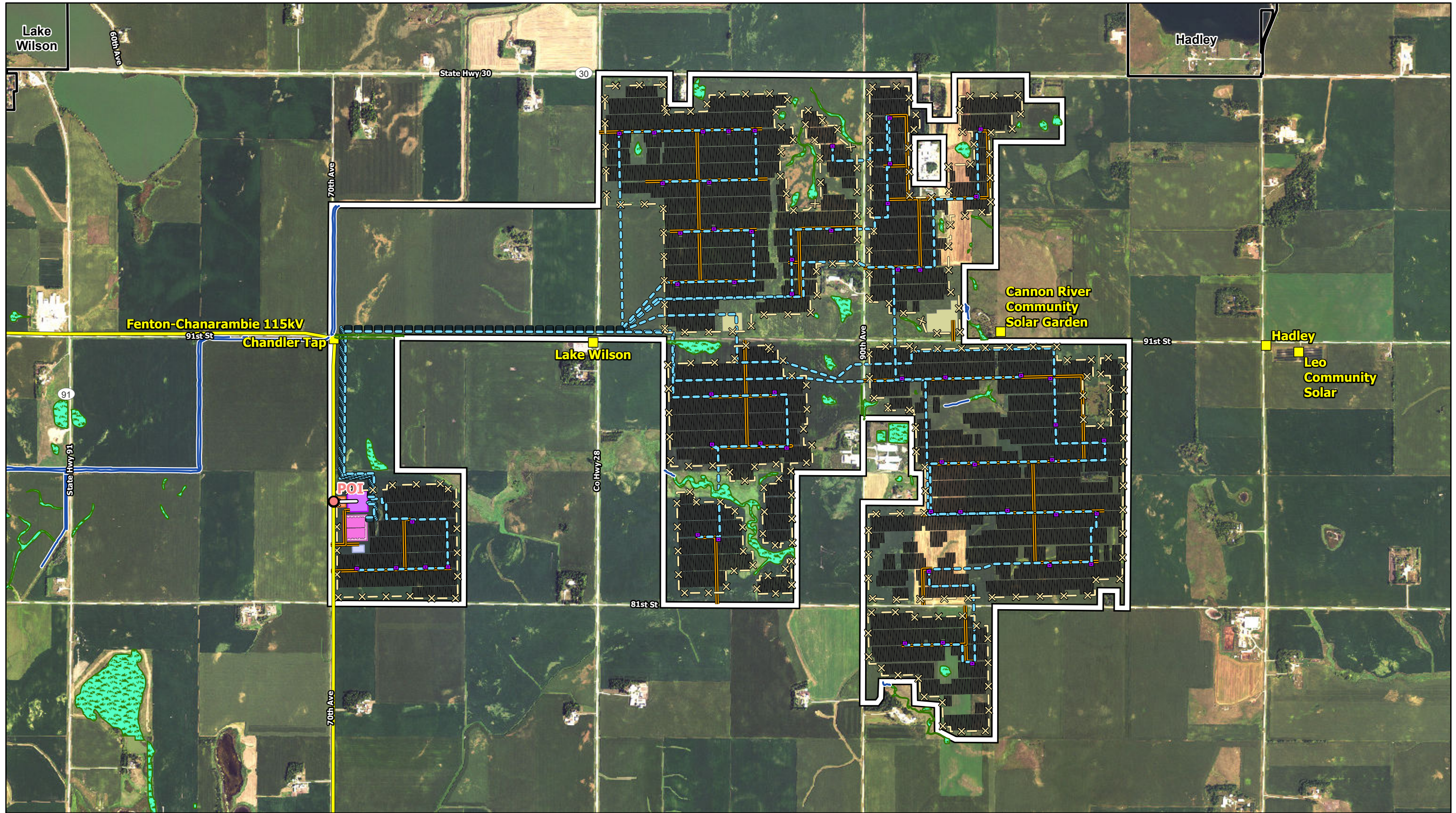


APPENDIX A: MAPS

FIGURE 1

© 2023 Westwood Professional Services, Inc.



Data Source(s): Westwood (2023); NAIP Imagery (2021); U.S. Census Bureau (2020); Ventyx Velocity Suite (2021); MNDOT (2021); USFWS NWI (2016); USGS NHD (2015). Existing pipeline routes are approximate.

Legend

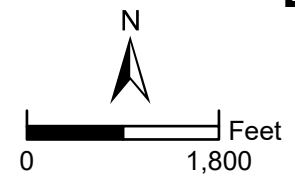
- | | | | | |
|--------------------------------|---------------------|--|---------------------------|--|
| Project Area | Array Fence | Proposed Substation | Proposed Laydown Yard | Municipal Boundary |
| Point of Interconnection (POI) | Access Road | Proposed Battery Energy Storage System | Field Delineated Waterway | Existing Substation |
| Project Gen-Tie Line | AC Feeder | Proposed O&M Facility | Field Delineated Wetland | Fenton-Chanarambie 115kV Transmission Line |
| Proposed Trackers | Proposed Switchyard | | | |

Lake Wilson Solar Project

Murray County, Minnesota

Site Plan Overview

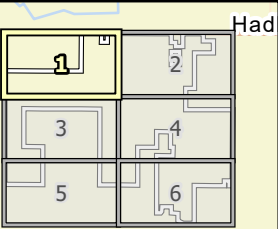
(July, 2023)





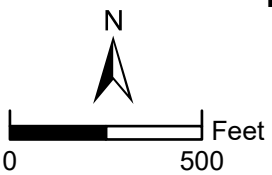
Data Source(s): Westwood (2023); NAIP Imagery (2021); U.S. Census Bureau (2020); Ventyx Velocity Suite (2021); MNDOT (2021); USFWS NWI (2016); USGS NHD (2015). Existing pipeline routes are approximate.

Westwood
Toll Free (888) 937-5150 westwoodps.com
Westwood Professional Services, Inc.

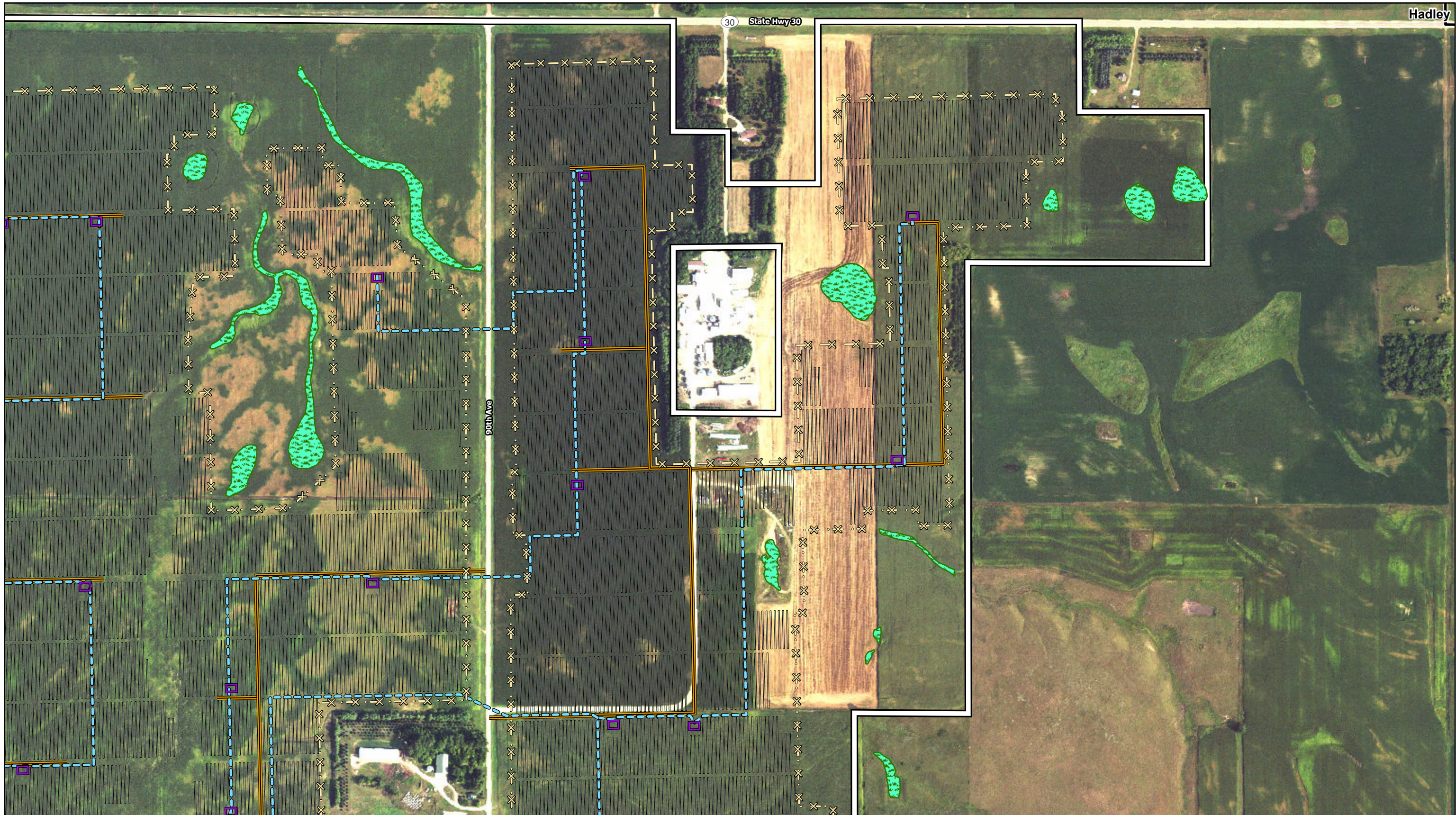


Legend

- | | | | | |
|--------------------------------|-------------------|--|---------------------------|----------------------------|
| Project Area | Array Fence | Proposed Switchyard | Proposed O&M Facility | Field Delineated Wetland |
| Point of Interconnection (POI) | Access Road | Proposed Substation | Proposed Laydown Yard | Municipal Boundary |
| Project Gen-Tie Line | AC Feeder | Proposed Battery Energy Storage System | Field Delineated Waterway | Existing Substation |
| Proposed Trackers | Proposed Inverter | | | Existing Transmission Line |

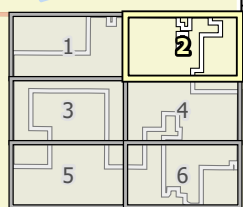


Lake Wilson Solar Project
Murray County, Minnesota
Preliminary Facility Design
(July, 2023)



Data Source(s): Westwood (2023); NAIP Imagery (2021); U.S. Census Bureau (2020); Ventyx Velocity Suite (2021); MNDOT (2021); USFWS NWI (2016); USGS NHD (2015). Existing pipeline routes are approximate.

Westwood
Toll Free (888) 937-5150 westwoodps.com
Westwood Professional Services, Inc.



Legend

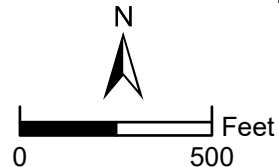
- Project Area
- Point of Interconnection (POI)
- Project Gen-Tie Line
- Proposed Trackers

- Array Fence
- Access Road
- AC Feeder
- Proposed Inverter

- Proposed Switchyard
- Proposed Substation
- Proposed Battery Energy Storage System

- Proposed O&M Facility
- Proposed Laydown Yard
- Field Delineated Waterway

- Field Delineated Wetland
- Municipal Boundary
- Existing Substation
- Existing Transmission Line



Lake Wilson Solar Project

Murray County, Minnesota

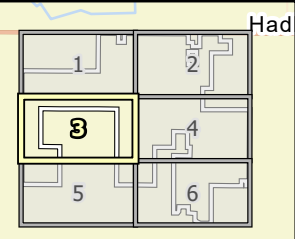
Preliminary
Facility Design

July, 2023)



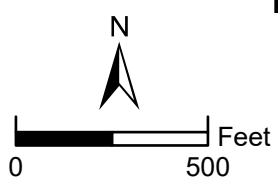
Data Source(s): Westwood (2023); NAIP Imagery (2021); U.S. Census Bureau (2020); Ventyx Velocity Suite (2021); MNDOT (2021); USFWS NWI (2016); USGS NHD (2015). Existing pipeline routes are approximate.

Westwood
Toll Free (888) 937-5150 westwoodps.com
Westwood Professional Services, Inc.



Legend

- | | | | | |
|--------------------------------|-------------------|--|---------------------------|----------------------------|
| Project Area | Array Fence | Proposed Switchyard | Proposed O&M Facility | Field Delineated Wetland |
| Point of Interconnection (POI) | Access Road | Proposed Substation | Proposed Laydown Yard | Municipal Boundary |
| Project Gen-Tie Line | AC Feeder | Proposed Battery Energy Storage System | Field Delineated Waterway | Existing Substation |
| Proposed Tracker | Proposed Inverter | | | Existing Transmission Line |

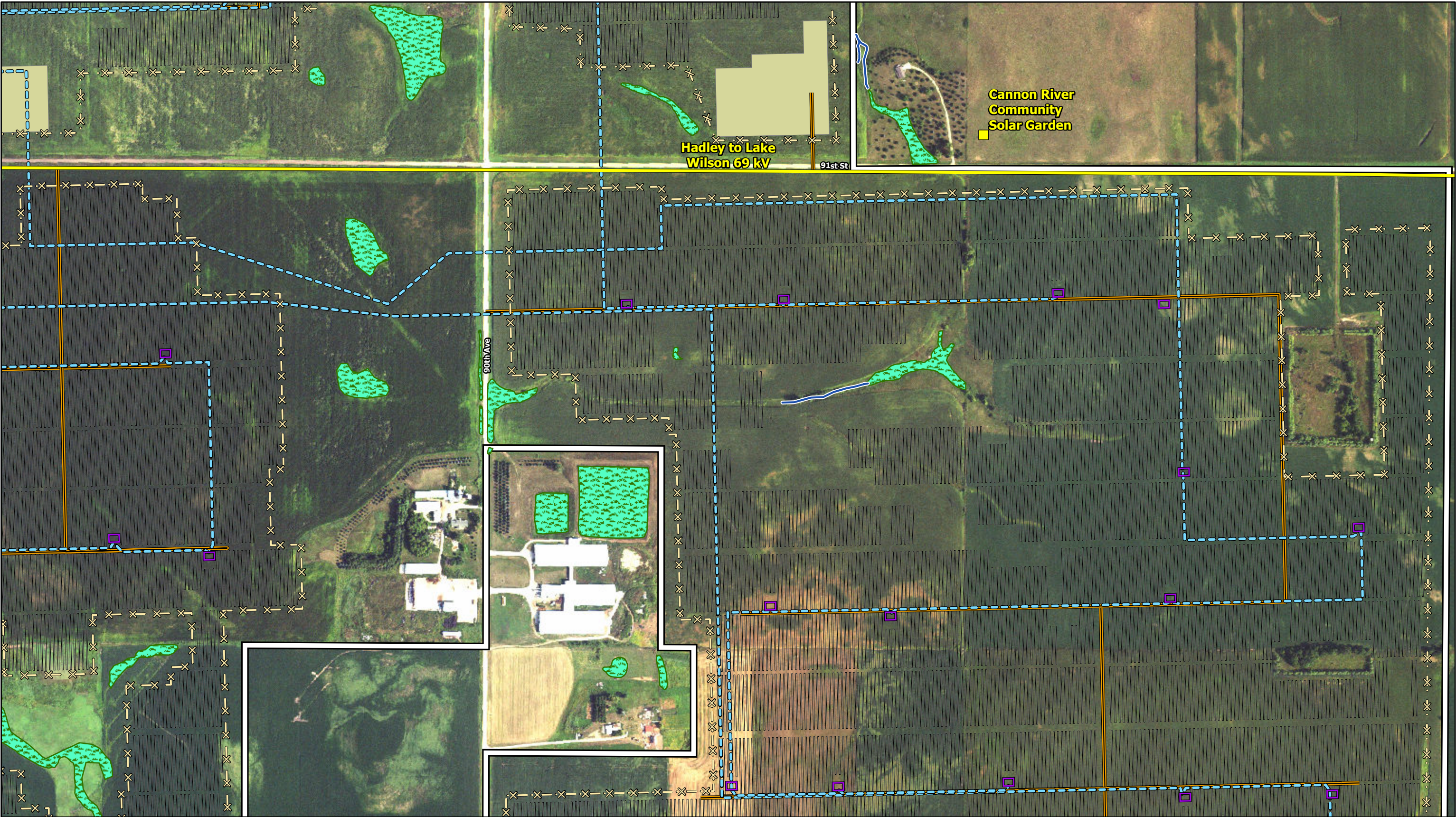


Lake Wilson Solar Project

Murray County, Minnesota

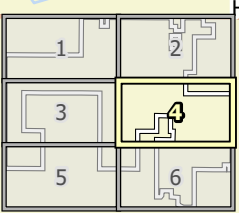
Preliminary
Facility Design

(July, 2023)



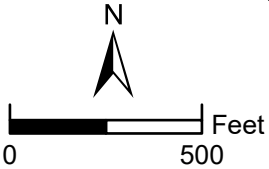
Data Source(s): Westwood (2023); NAIP Imagery (2021); U.S. Census Bureau (2020); Ventyx Velocity Suite (2021); MNDOT (2021); USFWS NWI (2016); USGS NHD (2015). Existing pipeline routes are approximate.

Westwood
Toll Free (888) 937-5150 westwoodps.com
Westwood Professional Services, Inc.



Legend

- | | | | | |
|--------------------------------|-------------------|--|---------------------------|----------------------------|
| Project Area | Array Fence | Proposed Switchyard | Proposed O&M Facility | Field Delineated Wetland |
| Point of Interconnection (POI) | Access Road | Proposed Substation | Proposed Laydown Yard | Municipal Boundary |
| Project Gen-Tie Line | AC Feeder | Proposed Battery Energy Storage System | Field Delineated Waterway | Existing Substation |
| Proposed Trackers | Proposed Inverter | | | Existing Transmission Line |



Lake Wilson Solar Project

Murray County, Minnesota

Preliminary
Facility Design

(July, 2023)

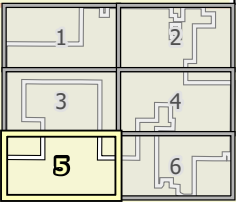
Fenton=Chanarambie 15.15kV Chandler Tap to East Ridge Tap 69 kV

70th Ave

Data Source(s): Westwood (2023); NAIP Imagery (2021); U.S. Census Bureau (2020); Ventyx Velocity Suite (2021); MNDOT (2021); USFWS NWI (2016); USGS NHD (2015). Existing pipeline routes are approximate.

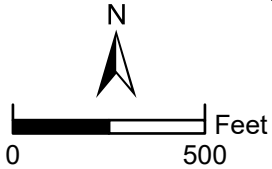
Westwood

Toll Free (888) 937-5150 westwoodps.com
Westwood Professional Services, Inc.



Legend

- | | | | | |
|--------------------------------|-------------------|--|---------------------------|----------------------------|
| Project Area | Array Fence | Proposed Switchyard | Proposed O&M Facility | Field Delineated Wetland |
| Point of Interconnection (POI) | Access Road | Proposed Substation | Proposed Laydown Yard | Municipal Boundary |
| Project Gen-Tie Line | AC Feeder | Proposed Battery Energy Storage System | Field Delineated Waterway | Existing Substation |
| Proposed Trackers | Proposed Inverter | | | Existing Transmission Line |



Lake Wilson Solar Project

Murray County, Minnesota

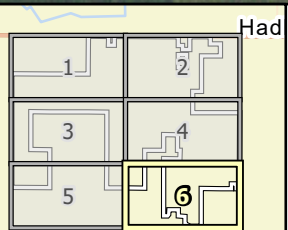
Preliminary Facility Design

(July, 2023)



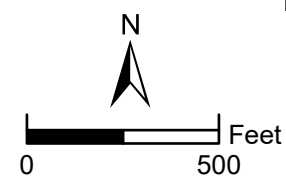
Data Source(s): Westwood (2023); NAIP Imagery (2021); U.S. Census Bureau (2020); Ventyx Velocity Suite (2021); MNDOT (2021); USFWS NWI (2016); USGS NHD (2015). Existing pipeline routes are approximate.

Westwood
Toll Free (888) 937-5150 westwoodps.com
Westwood Professional Services, Inc.



Legend

- | | | | | |
|--------------------------------|-------------------|--|---------------------------|----------------------------|
| Project Area | Array Fence | Proposed Switchyard | Proposed O&M Facility | Field Delineated Wetland |
| Point of Interconnection (POI) | Access Road | Proposed Substation | Proposed Laydown Yard | Municipal Boundary |
| Project Gen-Tie Line | AC Feeder | Proposed Battery Energy Storage System | Field Delineated Waterway | Existing Substation |
| Proposed Trackers | Proposed Inverter | | | Existing Transmission Line |



Lake Wilson Solar Project

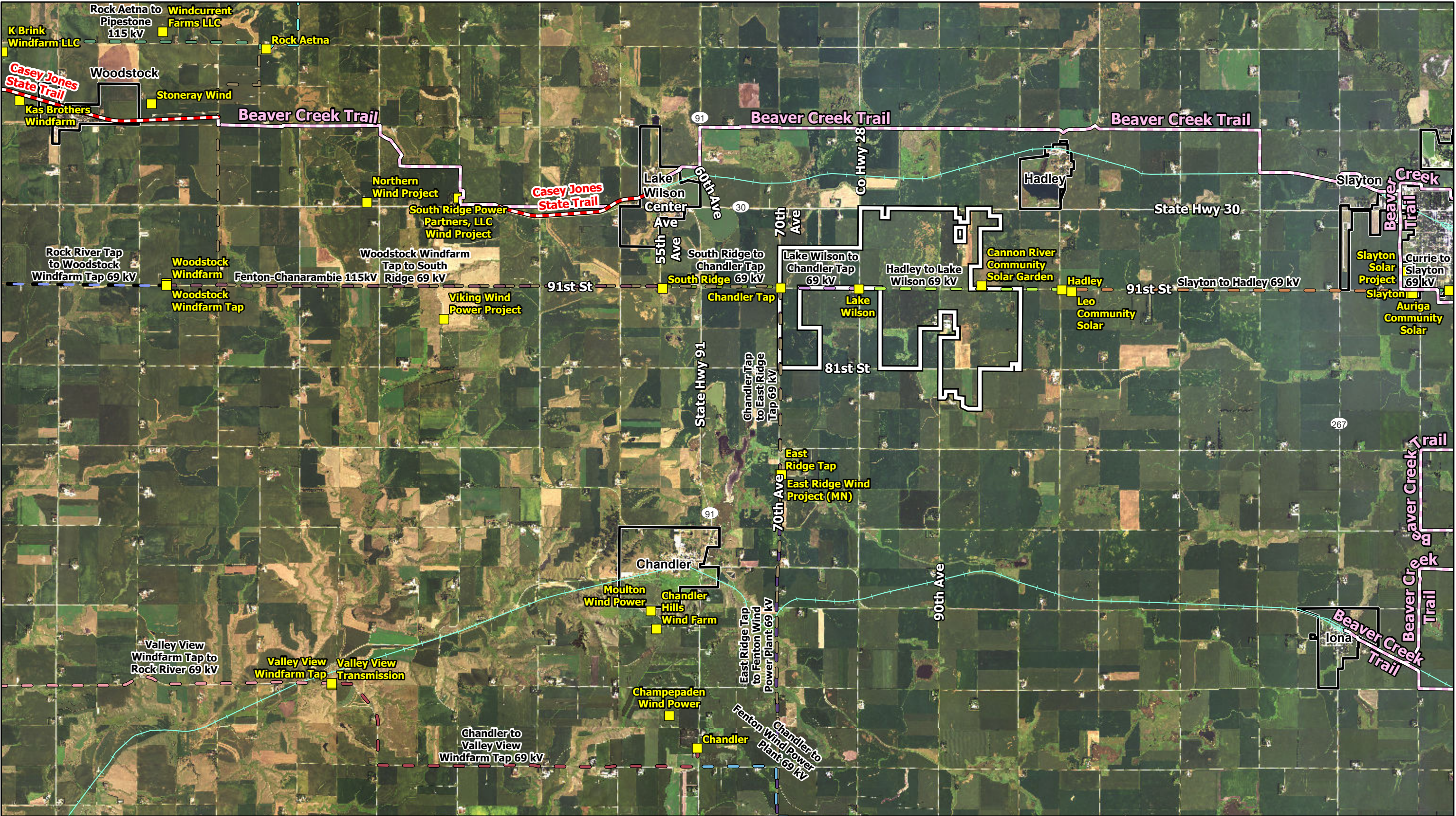
Murray County, Minnesota

Preliminary
Facility Design

(July, 2023)

FIGURE 2

© 2023 Westwood Professional Services, Inc.



Data Source(s): Westwood (2023); NAIP Imagery (2021); U.S. Census Bureau (2021); Ventyx Velocity Suite, Ventyx Energy LLC. (2021); MNDOT (2021); NFMS (2021). Existing pipeline routes are approximate.

Legend

Project Area

Existing Substation

Snowmobile Trail

State Trail

Abandoned Rail

Municipal Boundary

Name

Chandler Tap to East Ridge Tap 69 kV

Chandler to Fenton Wind Power Plant 69 kV

Chandler to Valley View Windfarm Tap 69 kV

Currie to Slayton 69 kV

East Ridge Tap to East Ridge Wind Project (MN) 69 kV

East Ridge Tap to Fenton Wind Power Plant 69 kV

Fenton-Chanarambie 115kV

Hadley to Lake Wilson 69 kV

Lake Wilson to Chandler Tap 69 kV

Rock Aetna to Lake Yankton 115 kV

Rock Aetna to Pipestone 115 kV

Rock River Tap to Woodstock Windfarm Tap 69 kV

Slayton to Hadley 69 kV

South Ridge to Chandler Tap 69 kV

Valley View Windfarm Tap to Rock River 69 kV

Valley View Windfarm Tap to Valley View Transmission 69 kV

Woodstock Windfarm Tap to South Ridge 69 kV

Woodstock Windfarm Tap to Woodstock Windfarm 69 kV

Lake Wilson Solar Project

Murray County, Minnesota

Existing Infrastructure



0 6,000 Feet

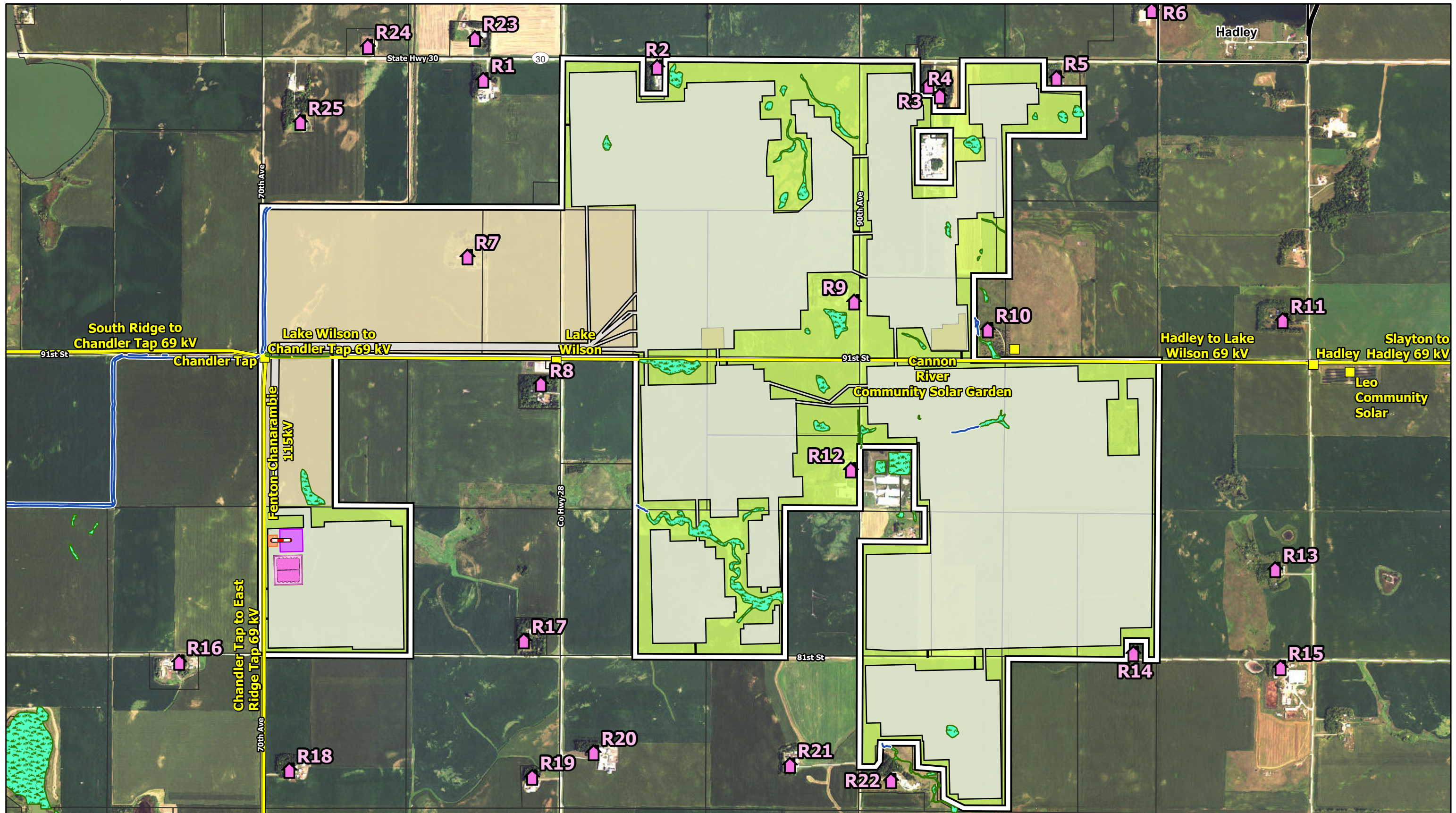
(July, 2023)

Westwood

Toll Free (888) 937-5150 westwoodps.com
Westwood Professional Services, Inc.

FIGURE 3

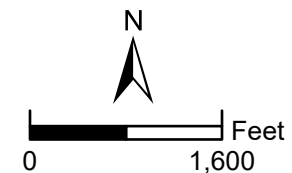
© 2023 Westwood Professional Services, Inc.



Data Source(s): Westwood (2023); NAIP Imagery (2021); U.S. Census Bureau (2020); MNDNR (2021).

Legend

- | | | | |
|---------------------------|----------------------------|--|--|
| Project Area | Railroad | Proposed Battery Energy Storage System | Participating - Solar Agreement |
| Noise Receptor | Existing Substation | Proposed Laydown Yard | Participating - Transmission Agreement |
| Field Delineated Waterway | Existing Transmission Line | Preliminary Development Area | Municipal Boundary |
| Field Delineated Wetland | Proposed Switchyard | Parcel Boundary | Proposed Gen-Tie Line |
| Abandoned Rail | Proposed Substation | | |



Lake Wilson Solar Project

Murray County, Minnesota

Residences In
Vicinity of Project

(July, 2023)

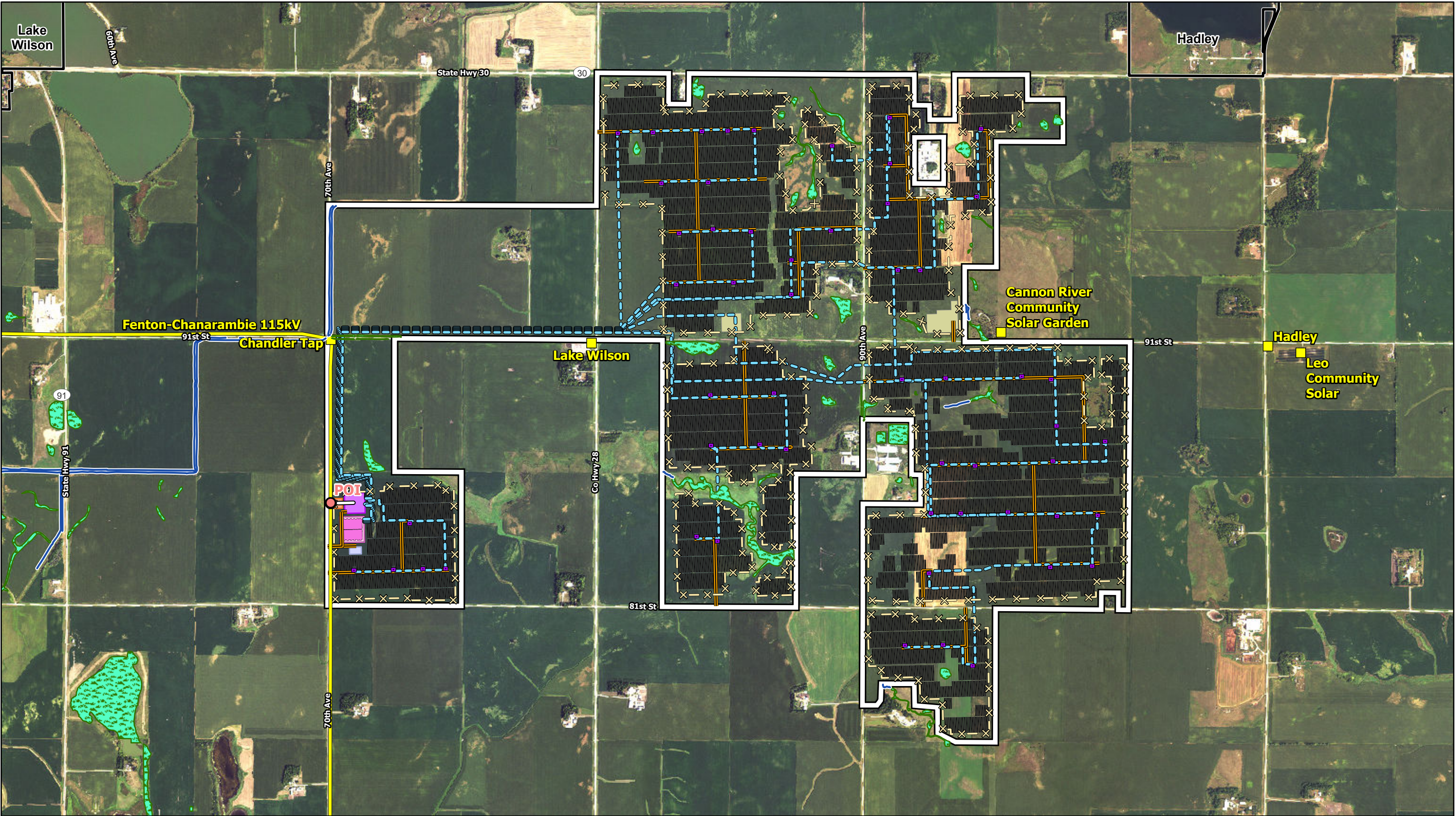
Westwood

Toll Free (888) 937-5150 westwoodps.com
Westwood Professional Services, Inc.

Map Document: N:\0012861_01\GIS\ArcPro\Pol\W_SPA\Exhibits_210830\01\040_SPA\Exhibits_230706.aprx 7/12/2023 7:59 AM EMBolsen

FIGURE 4

© 2023 Westwood Professional Services, Inc.



Data Source(s): Westwood (2023); NAIP (2021); U.S. Census Bureau (2020); Ventyx Velocity Suite (2021); MNDOT (2021); USFWS NWI (2016); USGS NHD (2015). Existing pipeline routes are approximate.

Westwood

Toll Free (888) 937-5150 westwoodps.com
Westwood Professional Services, Inc.

Legend

- Project Area
- Point of Interconnection (POI)
- Project Gen-Tie Line

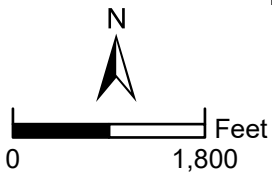
- Proposed Trackers
- Array Fence
- Access Road
- AC Feeder

- Proposed Inverter
- Proposed Switchyard
- Proposed Substation

- Proposed Battery Energy Storage System
- Proposed O&M Facility
- Proposed Laydown Yard

- Field Delineated Waterway
- Field Delineated Wetland
- Municipal Boundary

- Existing Substation
- Fenton-Chanarambie 115kV Transmission Line



Lake Wilson Solar Project

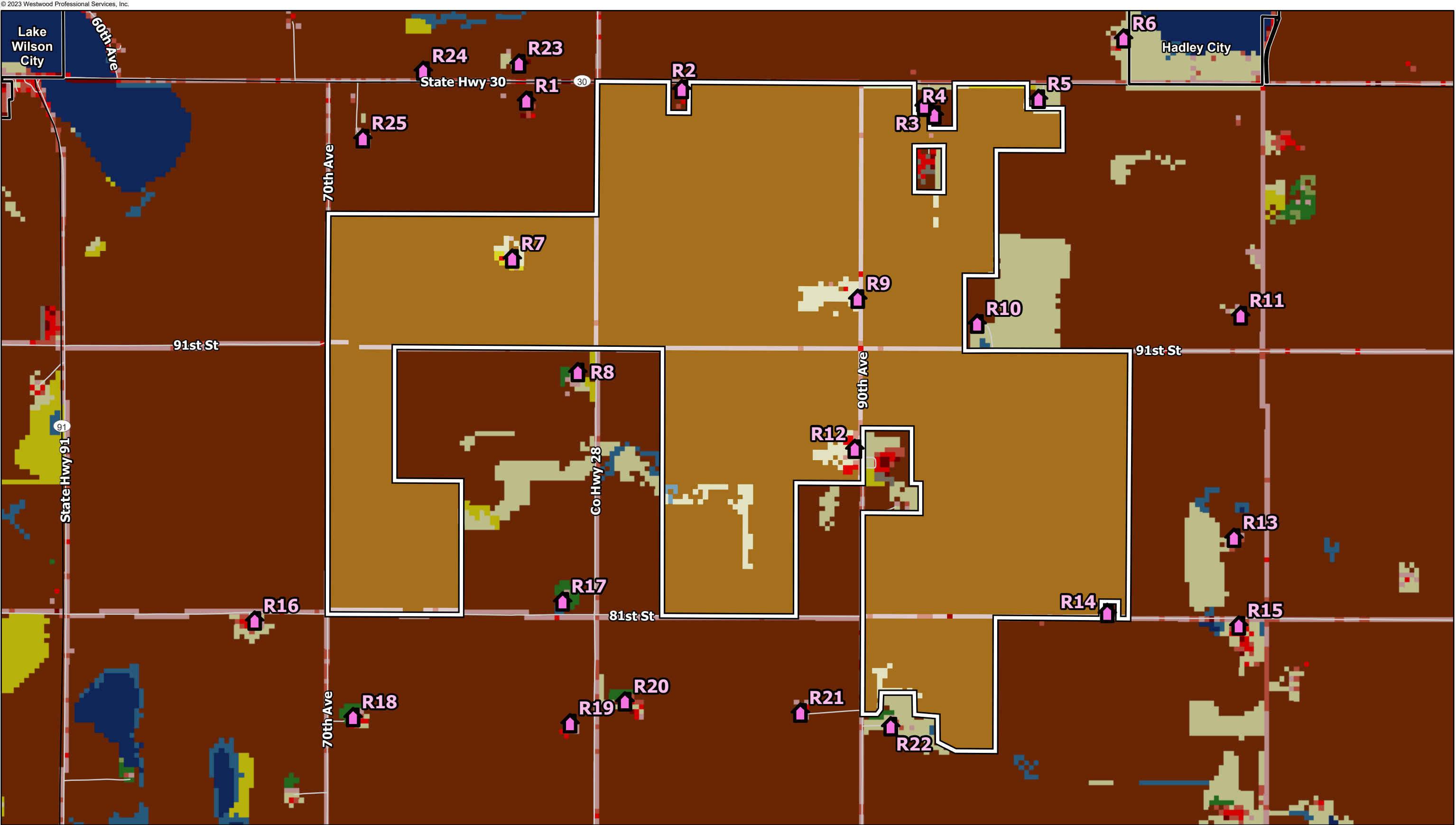
Murray County, Minnesota

Preliminary
Facility Design

FIGURE 4 (July, 2023)

Map Document N:\0012861_01\GIS\ArcPro\Pol\W SPA\Exhibits 2\0830\001286101_040_SPA\Exhibits 230706.aprx 7/12/2023 7:49 AM EMBolsen

FIGURE 5



Data Source(s): Westwood (2023); NAIP Imagery (2019); U.S. Census Bureau (2020); MNDOT (2021); MNDNR (2021); USFWS NWI (2016); USGS NHD (2015); FEMA NFHL (2019).

Legend

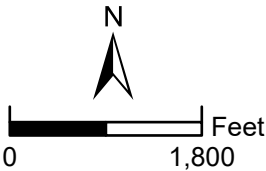
- Project Area
- Municipal Boundary
- Major Road
- Road
- Noise Receptor

Land Cover Type - Project Area
Acreage (Percent Total)

- Cultivated Crops - 2,491.1 Acres (95.05%)
- Deciduous Forest - 0.21 Acres (0.01%)

- Developed, High Intensity - 0.22 Acres (0.01%)
- Developed, Low Intensity - 9.8 Acres (0.37%)
- Developed, Medium Intensity - 3.52 Acres (0.13%)

- Developed, Open Space - 67.34 Acres (2.57%)
- Emergent Herbaceous Wetlands - 1.55 Acres (0.06%)
- Grassland/Herbaceous - 42.55 Acres (1.62%)
- Pasture/Hay - 4.42 Acres (0.17%)



Lake Wilson Solar Project

Murray County, Minnesota

NLCD Land
Cover

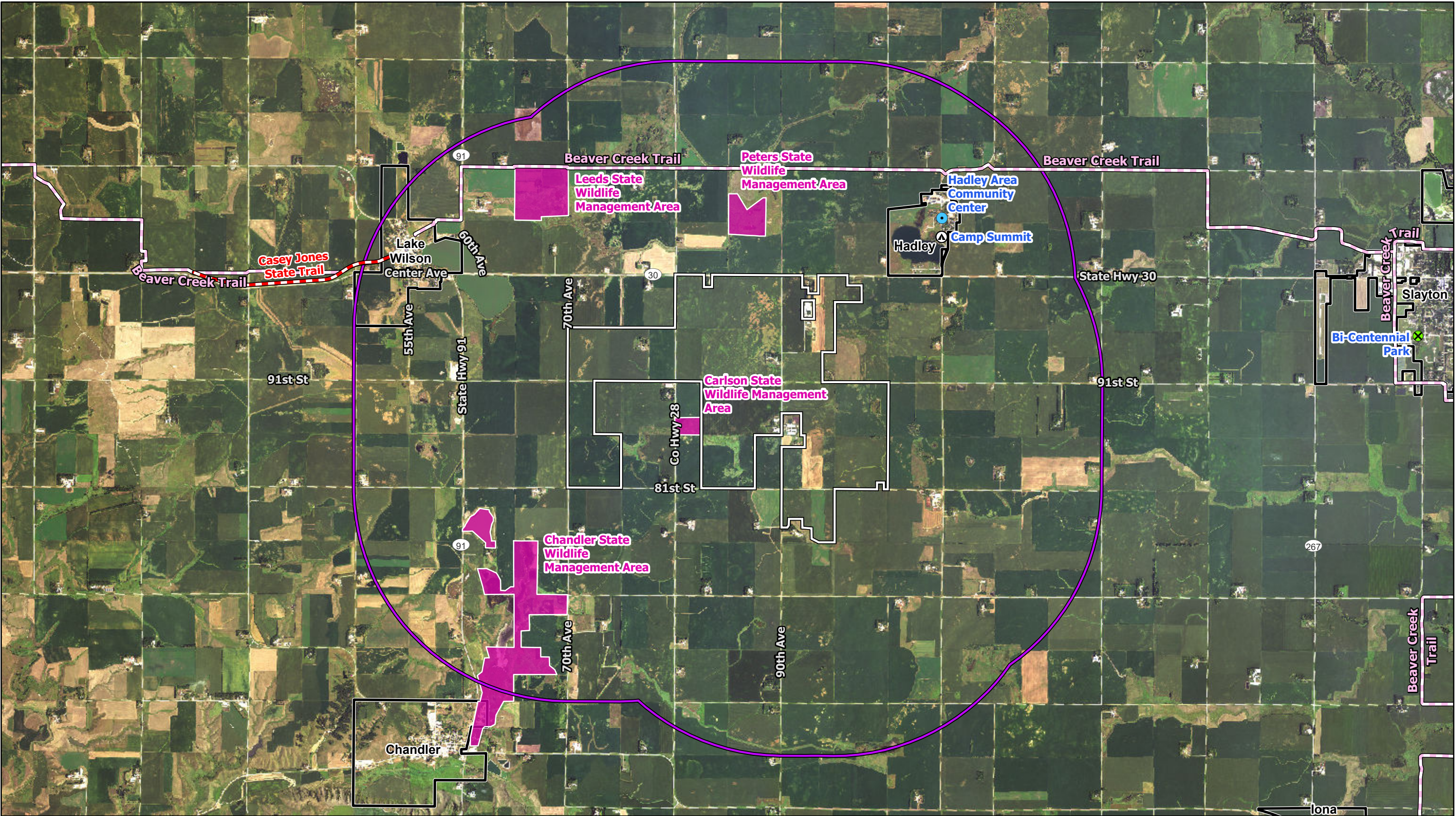
(July, 2023)

Westwood

Toll Free (888) 937-5150 westwoodps.com
Westwood Professional Services, Inc.

FIGURE 6

© 2023 Westwood Professional Services, Inc.

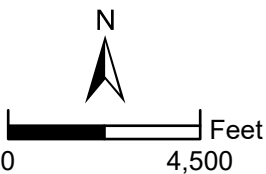


Data Source(s): Westwood (2023); NAIP Imagery (2021); U.S. Census Bureau (2021); Google Earth (2021); MN Geospatial Commons (2021).

Legend

- | | | |
|----------------------------|--------------------------|--------------------|
| Project Area | Park | Municipal Boundary |
| Project Area 2-Mile Buffer | State Trail | County Boundary |
| Campground | Snowmobile Trail | |
| Community Center | Wildlife Management Area | |

Westwood
Toll Free (888) 937-5150 westwoodps.com
Westwood Professional Services, Inc.

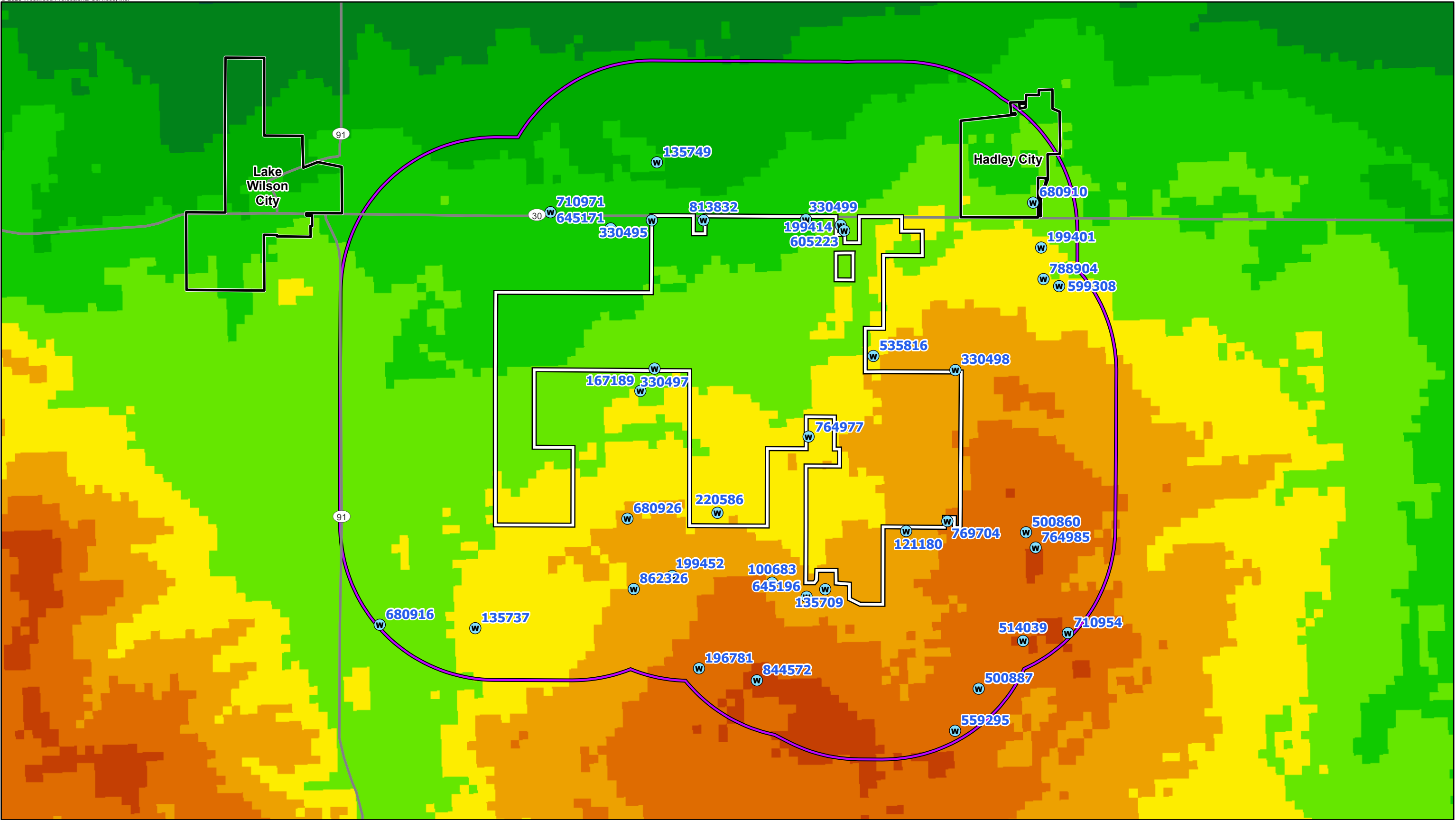


Lake Wilson Solar Project
Murray County, Minnesota
Recreational Resources
(July, 2023)

Map Document: N:\001\2861_01\GIS\ArcPro\Map_SPA\Exhibits_230706.aprx 7/12/2023 7:59 AM EMB:boisen

FIGURE 7

© 2023 Westwood Professional Services, Inc.



Data Source(s): Westwood (2023); NAIP Imagery (2021); U.S. Census Bureau (2020); U.S. Geological Survey National Geological and Geophysical Data Preservation Program (2020).

Westwood

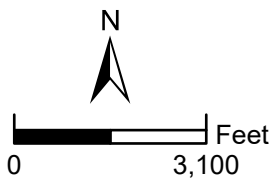
Toll Free (888) 937-5150 westwoodps.com
Westwood Professional Services, Inc.

Legend

- Project Area
- Project Area 1-Mile Buffer
- Water Well
- Municipal Boundary
- County Boundary
- Major Road

- Depth to Bedrock (ft)**
- 1 - 50
 - 51 - 100
 - 101 - 150
 - 151 - 200
 - 201 - 250

- 251 - 300
- 301 - 350
- 351 - 400
- 401 - 450
- 451 - 500
- 501 - 550
- 551 - 600
- 601 - 650
- 651 - 700



Lake Wilson Solar Project

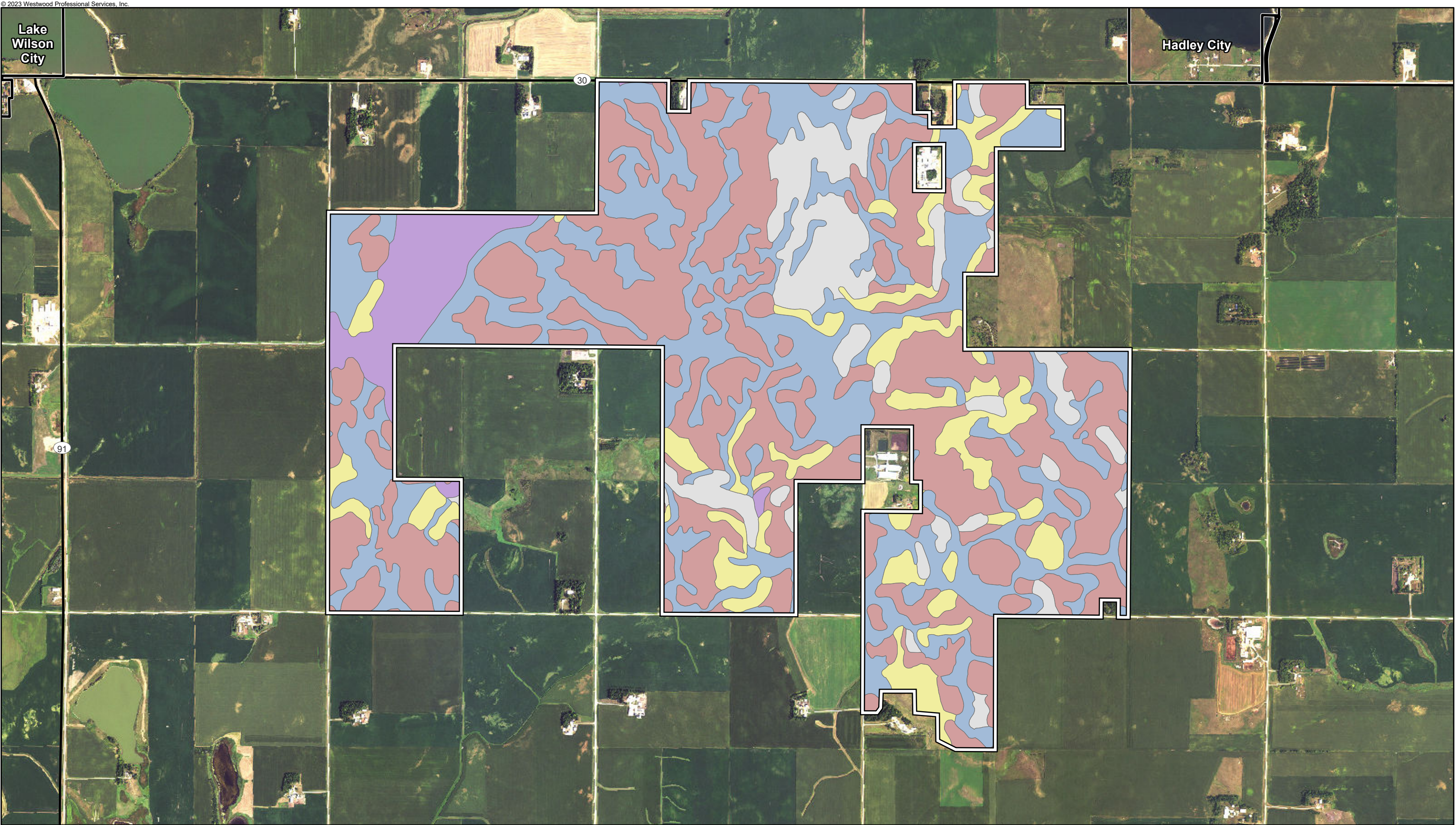
Murray County, Minnesota

Depth to Bedrock

(July, 2023)

Map Document: N:\0012861_01\GIS\ArcPro\Pol_W_SPA\Exhibits_210830\R001286101_040_SPA\Exhibits_230706.aprx 7/13/2023 8:44 AM EMBolsen

FIGURE 8A



© 2023 Westwood Professional Services, Inc.

Map Document N:\0012861_01\GIS\ArcPro\LIW_SPA\Exhibits_210830\001286101_040_SPAExhibits_230706.aprx 7/13/2023 8:42 AM EMBolsen

Data Source(s): Westwood (2023); NAIP Imagery (2021); U.S. Census Bureau (2020); Natural Resources Conservation Services (Accessed 2021).

Legend

- Project Area
- Major Road
- Municipal Boundary

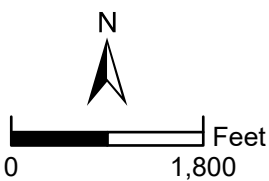
Prime Farmland Classification - Project Area Acreage (Percent Total)

- All areas are prime farmland - 1,139 Acres (43.46%)
- Farmland of statewide importance - 266 Acres (10.17%)

- Not prime farmland - 241 Acres (9.20%)
- Prime farmland if drained - 839 Acres (32.02%)
- Prime farmland if protected from flooding or not frequently flooded during the growing season - 135 Acres (5.16%)

Westwood

Toll Free (888) 937-5150 westwoodps.com
Westwood Professional Services, Inc.



Lake Wilson Solar Project

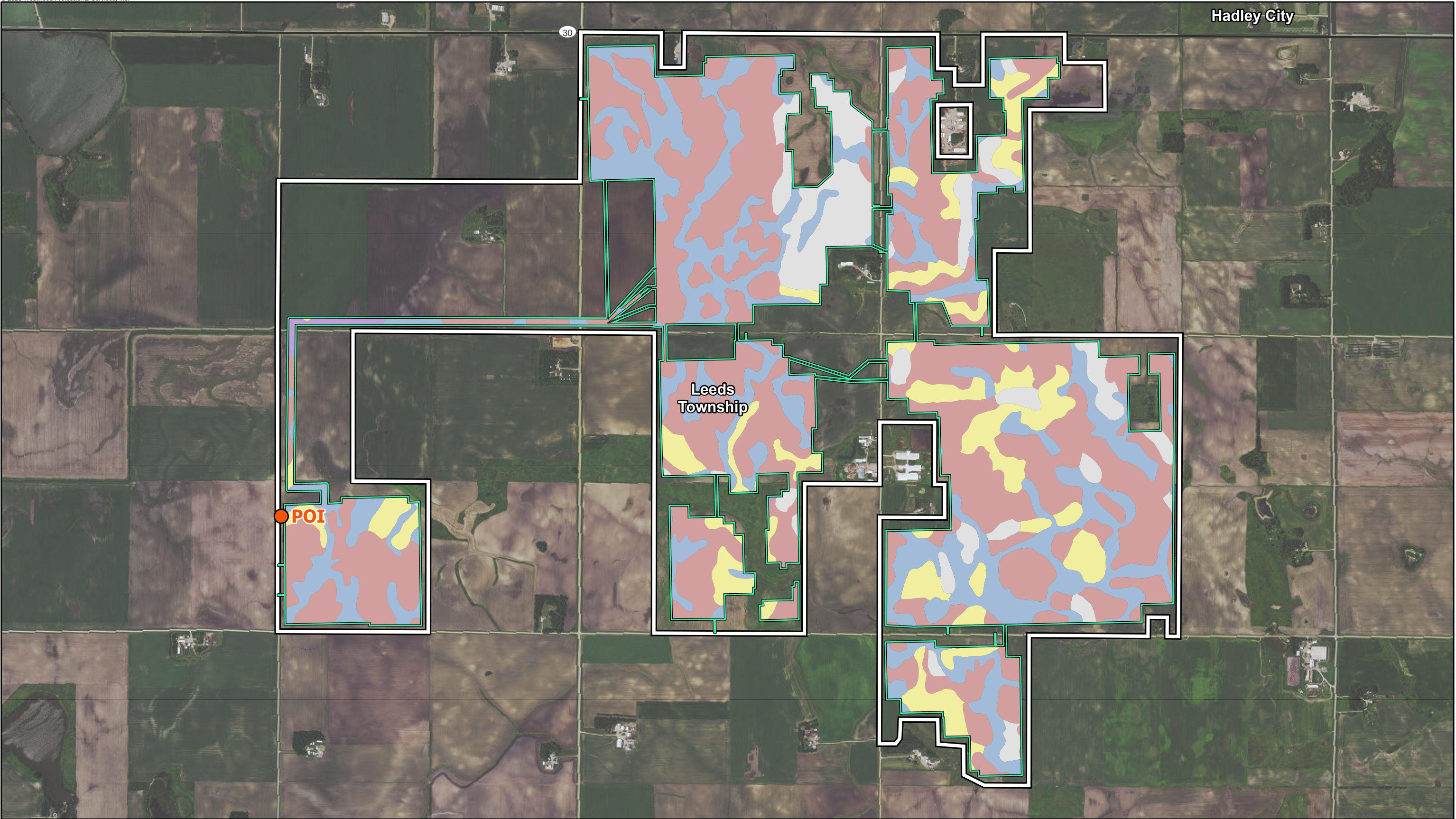
Murray County, Minnesota

Project Area
Farmland Classification

(July, 2023)

FIGURE 8B

© 2023 Westwood Professional Services, Inc.



Data Source(s): Westwood (2023); ESRI WMS Imagery Basemap (Accessed 2021); U.S. Census Bureau (2020); Natural Resources Conservation Services (Accessed 2021); Ventyx Velocity Suite (2021).

Westwood

Toll Free (888) 937-5150 westwoodps.com
Westwood Professional Services, Inc.

Legend

Project Area

Preliminary Development Area

Project Point of Connection (POI)

Existing Substation Near Project Area

Major Road

Municipal Boundary

Existing Transmission Lines

Chandler Tap to East Ridge Tap 69 kV

Fenton Wind Power Plant to Chanarambie 115 kV

Hadley to Lake Wilson 69 kV

Lake Wilson to Chandler Tap 69 kV

South Ridge to Chandler Tap 69 kV

Woodstock Windfarm Tap to South Ridge 69 kV

Prime Farmland Classification - Preliminary Development Area Acreage (Percent Total)

All areas are prime farmland - 762.26 Acres (49.96%)

Farmland of statewide importance - 191.16 Acres (12.53%)

Not prime farmland - 149.78 Acres (9.82%)

Prime farmland if drained - 415.13 Acres (27.21%)

Prime farmland if protected from flooding or not frequently flooded during the growing season - 7.48 Acres (0.49%)

Lake Wilson Solar Project

Murray County, Minnesota

Prime Farmland within the Preliminary Development Area

(July, 2023)

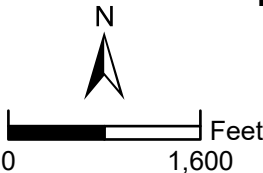
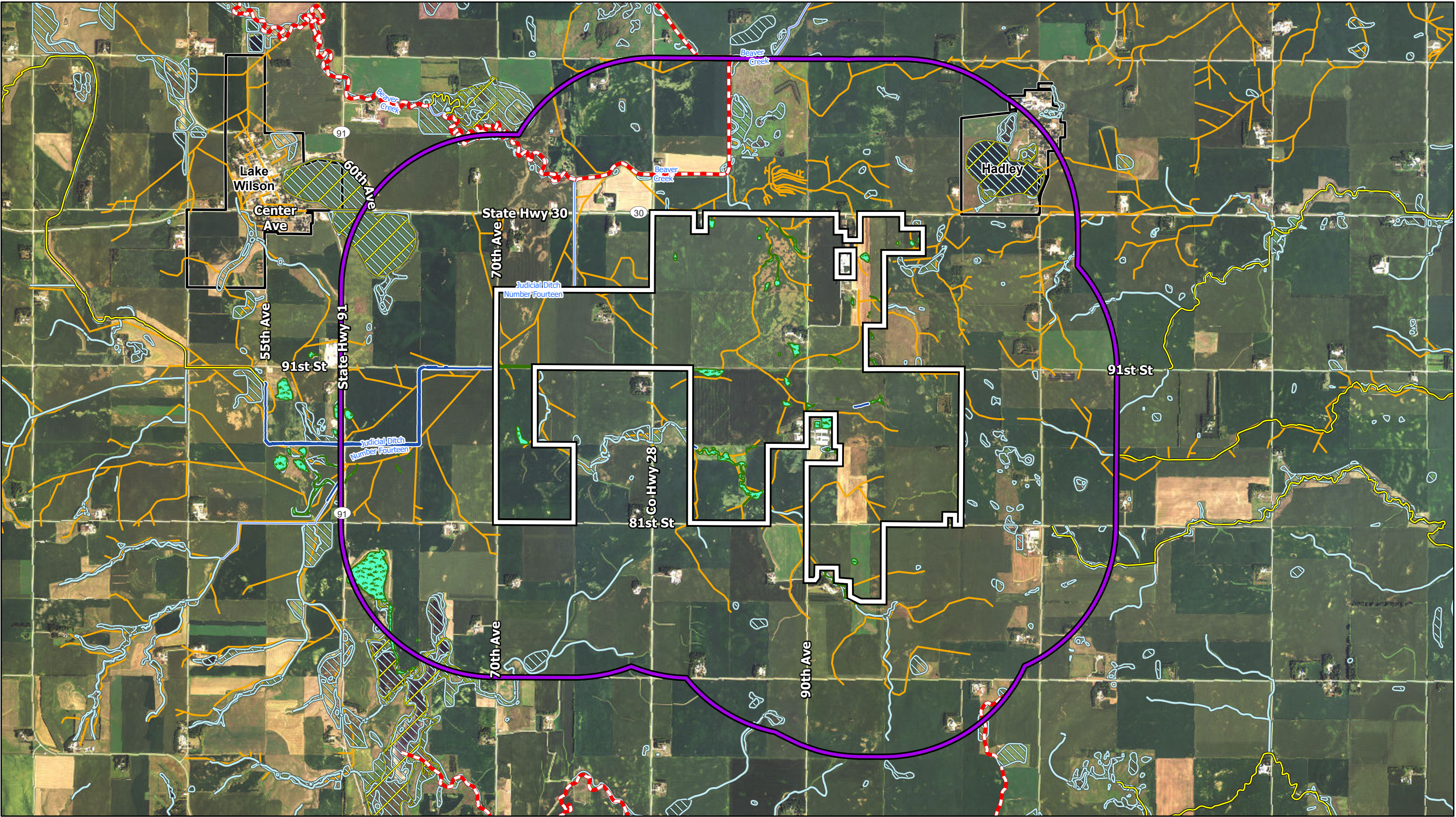


FIGURE 9

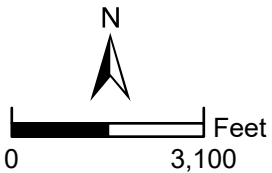
© 2023 Westwood Professional Services, Inc.



Data Source(s): Westwood (2023); NAIP Imagery (2021); U.S. Census Bureau (2020); MNDOT (2021); MNDNR (2021); USFWS NWI (2016); USGS NHD (2015); FEMA NFHL (2019).

Legend

- | | | |
|----------------------------|------------------------|--------------------|
| Project Area | 1% Annual Flood Chance | PWI Basin |
| Project Area 1-Mile Buffer | County Drain Tile | Named NHD Flowline |
| Field Delineated Waterway | Municipal Boundary | NWI Wetland |
| Field Delineated Wetland | PWI Watercourse | Impaired Waterway |



Lake Wilson Solar Project

Murray County, Minnesota

Water Resources

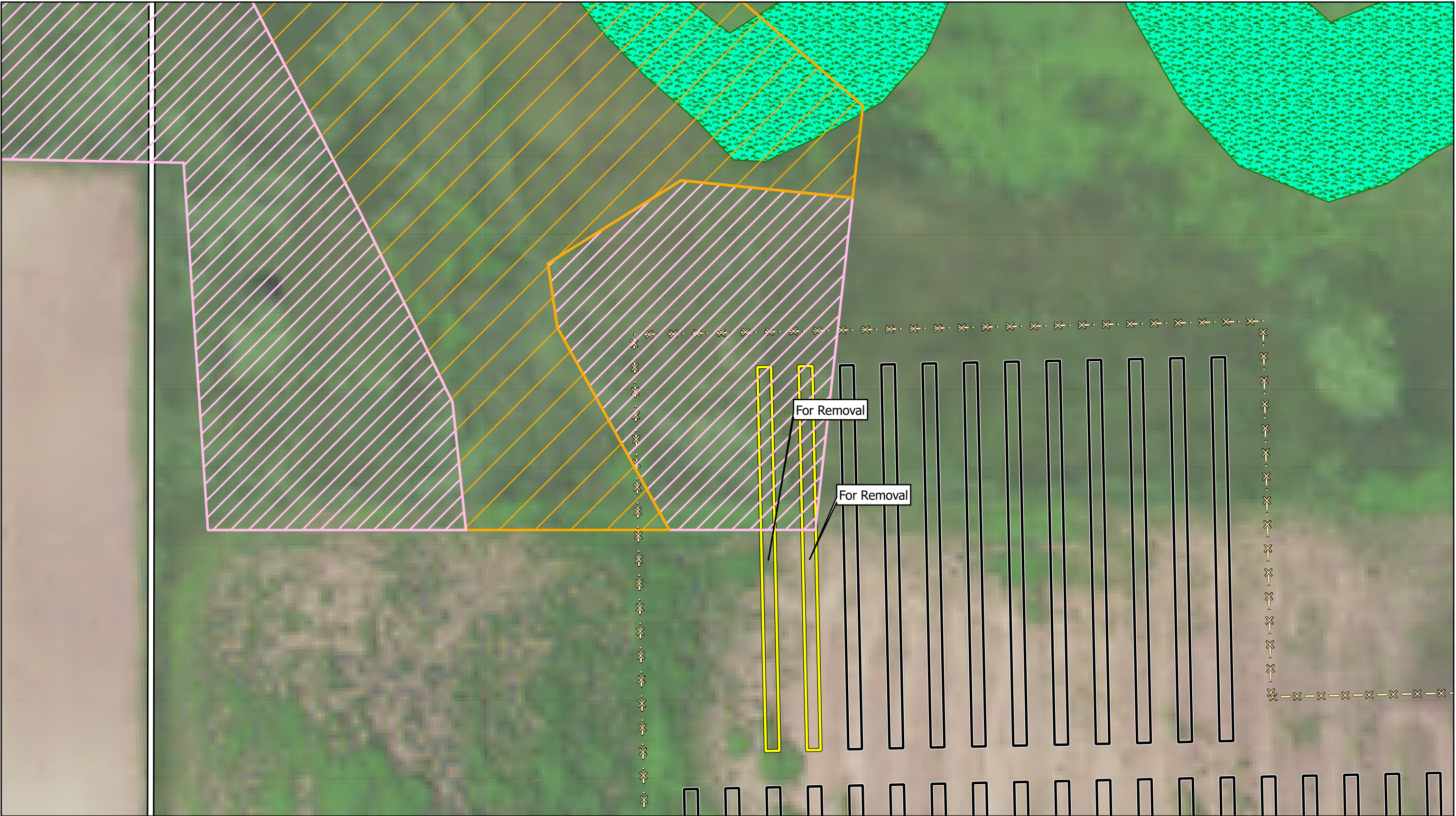
(July, 2023)

Westwood

Toll Free (888) 937-5150 westwoodps.com
Westwood Professional Services, Inc.

FIGURE 10

© 2023 Westwood Professional Services, Inc.



Data Source(s): Westwood (2023); NAIP (2019); U.S. Census Bureau (2020); Ventyx Velocity Suite (2021); MNDOT (2021); USFWS NWI (2016); USGS NHD (2015). Existing pipeline routes are approximate.

Legend

- Project Area
- Proposed Tracker
- Tracker to Remove

Array Fence

Field Delineated Wetland

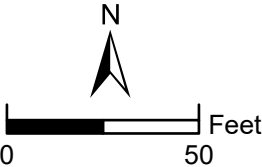
DNR Native Plant Community

- PWL_CX - Prairie Wetland Complex
- UPs13d - Dry Hill Prairie (Southern)

Lake Wilson Solar Project

Murray County, Minnesota

Mapped DNR Native
Plant Community Detail



(May, 2023)

Westwood

Toll Free (888) 937-5150 westwoodps.com
Westwood Professional Services, Inc.