

Data Source(s): Westwood (2023); Minnesota NAIIP Imagery (2019); U.S. Census Bureau (2021); Ventyx Velocity Suite, Ventyx Energy LLC. (2021); MNDOT (2021); NPMS (2021). Existing pipeline routes are approximate.



Legend

- Project Area
- Existing Substation
- Snowmobile Trail
- State Trail
- Abandoned Rail
- Municipal Boundary

Name

- | | | | | |
|--------------------------------------------|------------------------------------------------------|-----------------------------------|------------------------------------------------|------------------------------------------------------------|
| Chanarambie Station to Chanarambie 4 kV | Chandler to Valley View Windfarm Tap 69 kV | Fenton-Chanarambie 115kV | Rock River Tap to Woodstock Windfarm Tap 69 kV | Valley View Windfarm Tap to Valley View Transmission 69 kV |
| Chandler Tap to East Ridge Tap 69 kV | Currie to Slayton 69 kV | Hadley to Lake Wilson 69 kV | Slayton to Hadley 69 kV | Woodstock Windfarm Tap to South Ridge 69 kV |
| Chandler to Fenton Wind Power Plant 69 kV | East Ridge Tap to East Ridge Wind Project (MN) 69 kV | Lake Wilson to Chandler Tap 69 kV | South Ridge to Chandler Tap 69 kV | Woodstock Windfarm Tap to Woodstock Windfarm 69 kV |
| Chandler to Valley View Windfarm Tap 69 kV | East Ridge Tap to Fenton Wind Power Plant 69 kV | Rock Aetna to Lake Yankton 115 kV | Valley View Windfarm Tap to Rock River 69 kV | Woodstock Windfarm to Woodstock Windfarm 4 kV |
| Chandler to Fenton Wind Power Plant 69 kV | East Ridge Tap to Fenton Wind Power Plant 69 kV | Rock Aetna to Pipestone 115 kV | | |

Lake Wilson Solar Project

Murray County, Minnesota

Existing Infrastructure

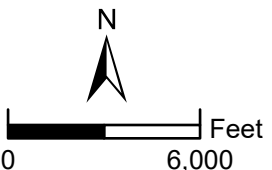
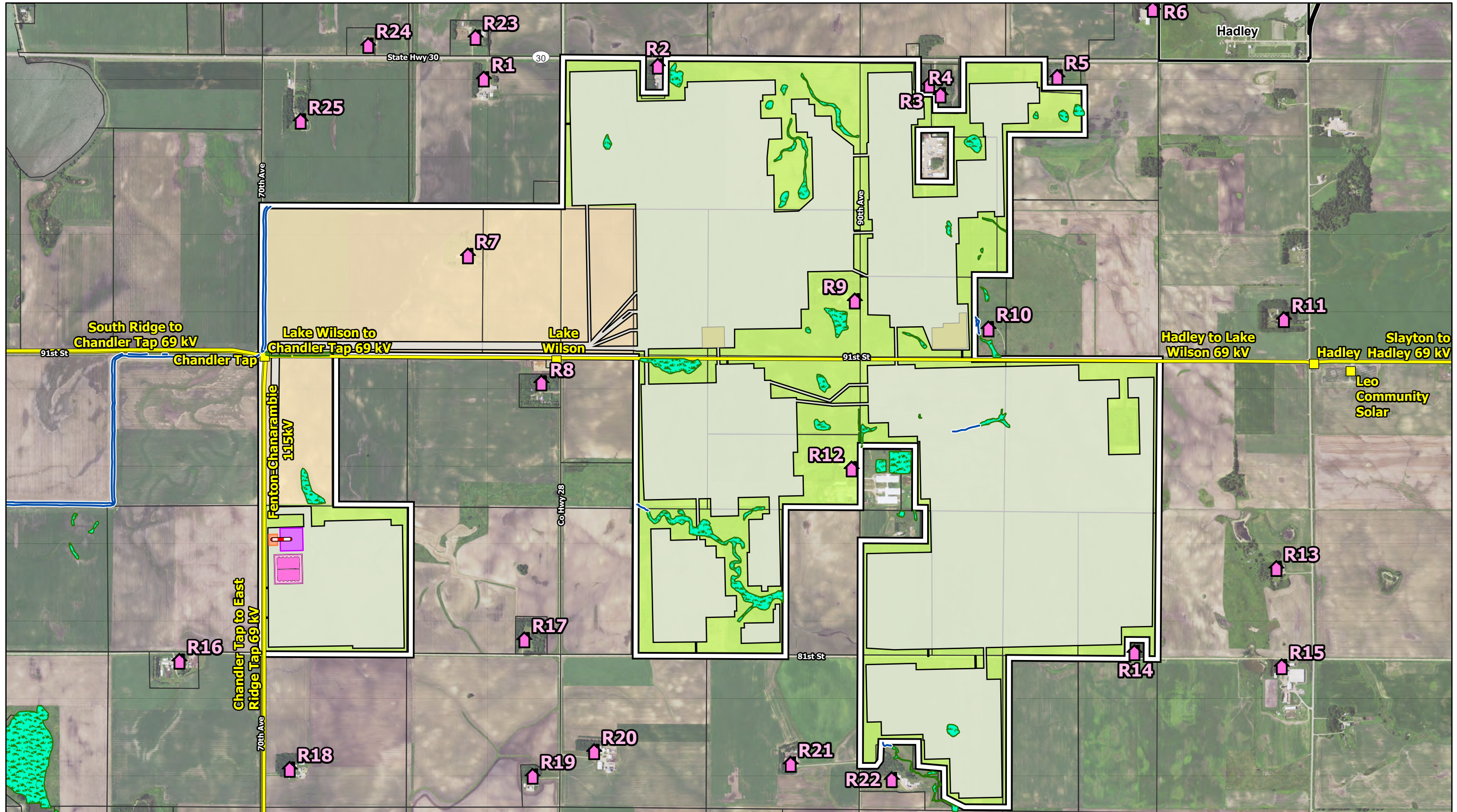


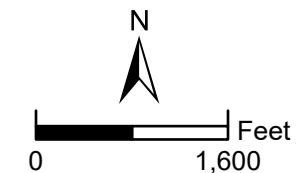
FIGURE 5 (January, 2023)



Data Source(s): Westwood (2023); NAIP (2019); U.S. Census Bureau (2020); MNDNR (2021).

Legend

- | | | | |
|---------------------------|----------------------------|----------------------------------------|----------------------------------------|
| Project Area | Railroad | Proposed Battery Energy Storage System | Participating - Solar Agreement |
| Noise Receptor | Existing Substation | Proposed Laydown Yard | Participating - Transmission Agreement |
| Field Delineated Waterway | Existing Transmission Line | Preliminary Development Area | Municipal Boundary |
| Field Delineated Wetland | Proposed Switchyard | Parcel Boundary | Proposed Gen-Tie Line |
| Abandoned Rail | Proposed Substation | | |

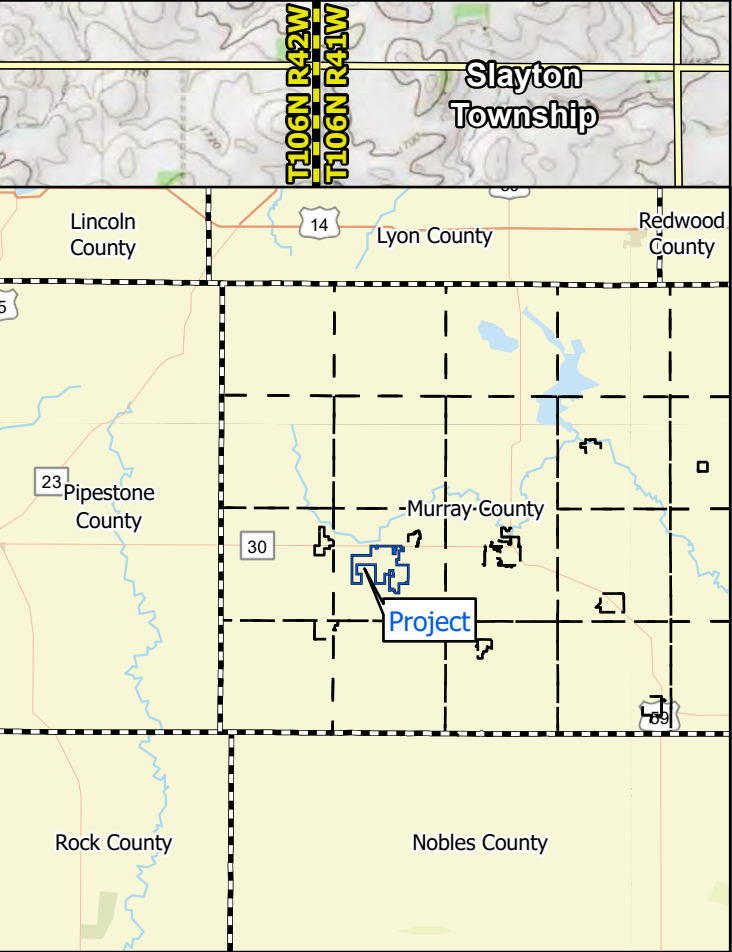
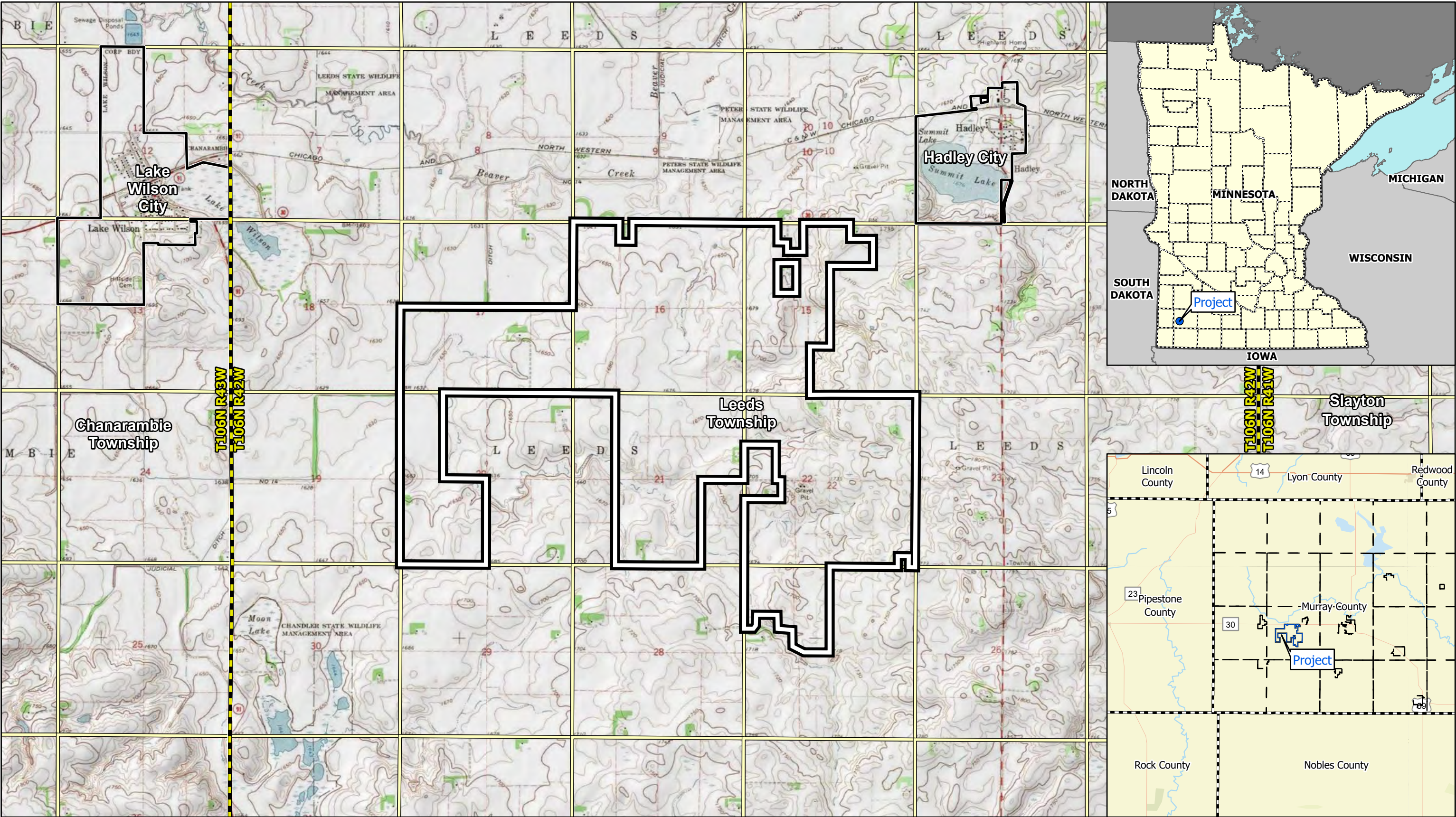


Lake Wilson Solar Project

Murray County, Minnesota

Residences In
Vicinity of Project

FIGURE 6 (January, 2023)



Data Source(s): Westwood (2022); ESRI WMS
USGS Topographic & World Streets Basemaps
(Accessed 2021).

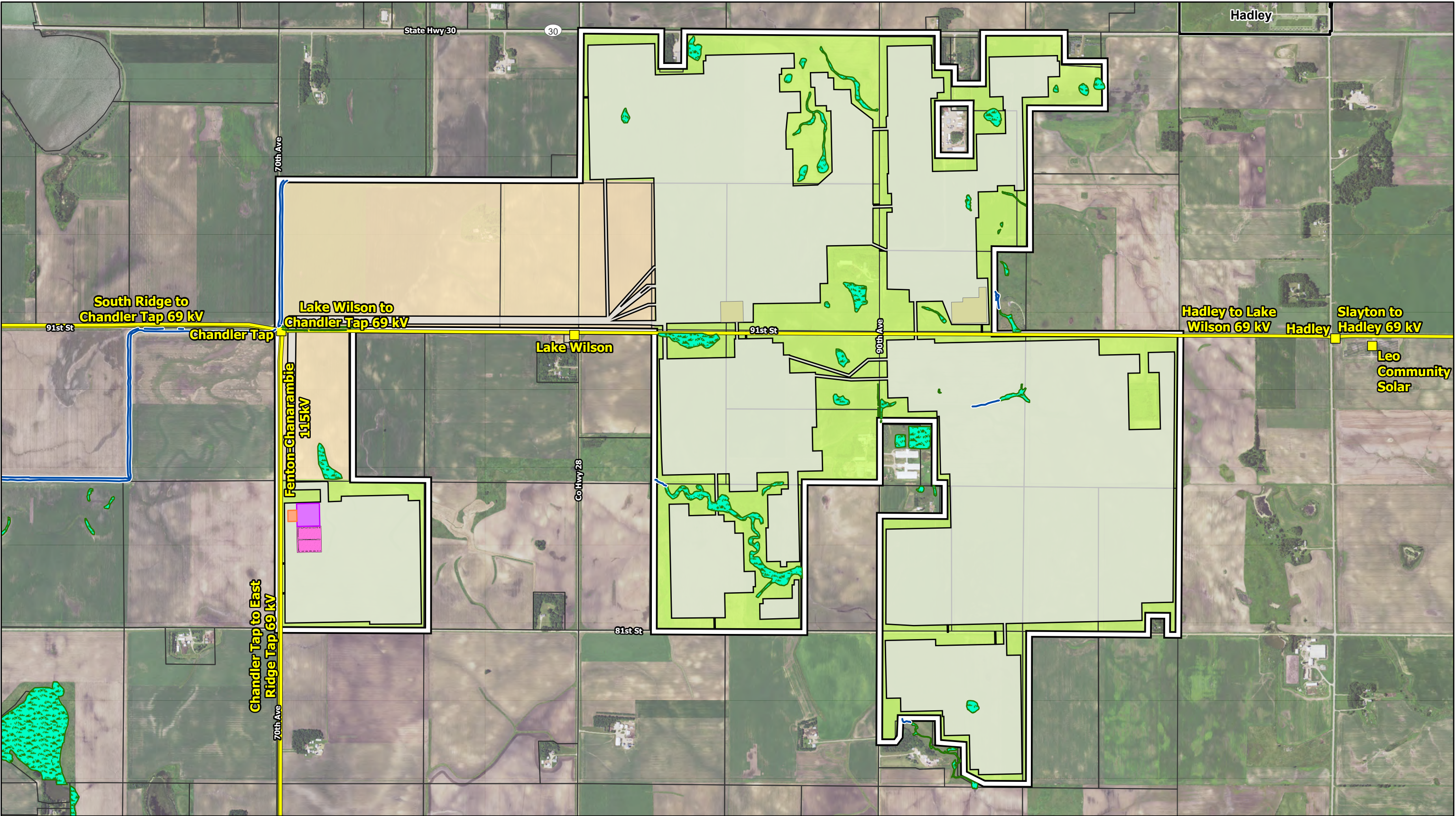
- Legend**
- Project Area
 - County Boundary
 - City/Civil Township Boundary
 - PLS Township
 - PLS Section

Westwood
Toll Free (888) 937-5150 westwoodps.com
Westwood Professional Services, Inc.



Lake Wilson Solar Project
Murray County, Minnesota
Project Location

FIGURE 1 (November, 2022)

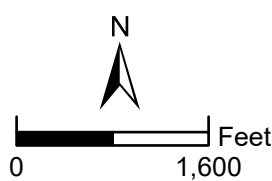


Data Source(s): Westwood (2022); NAIP (2019); U.S. Census Bureau (2020); Ventyx Velocity Suite (2021); MNDOT (2021); USFWS NWI (2016); USGS NHD (2015). Existing pipeline routes are approximate.



Legend

- | | | | | |
|------------------------------|----------------------------------------|---------------------------------|----------------------------------------|----------------------------|
| Project Area | Proposed Substation | Field Delineated Waterway | Participating - Transmission Agreement | Existing Transmission Line |
| Preliminary Development Area | Proposed Battery Energy Storage System | Field Delineated Wetland | Parcel Boundary | |
| Proposed Switchyard | Proposed Laydown Yard | Participating - Solar Agreement | Municipal Boundary | |
| | | | Existing Substation | |



Lake Wilson Solar Project
Murray County, Minnesota
Land Rights & Preliminary Development Area
FIGURE 2 (November, 2022)



Data Source(s): Westwood (2023); ESRI WMS Imagery Basemap (Accessed 2021); U.S. Census Bureau (2020).



Legend

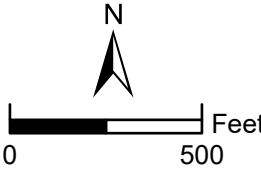
- Project Area
- Point of Interconnection (POI)
- Project Gen-Tie Line
- Proposed Trackers

- Preliminary Development Area
- Array Fence
- Proposed Inverter
- AC Feeder

- Access Road
- Proposed Switchyard
- Proposed Substation
- Proposed Battery Energy Storage System

- Proposed O&M Facility
- Proposed Laydown Yard
- Fenton-Chanarambie 115kV Transmission Line

- Field Delineated Waterway
- Field Delineated Wetland

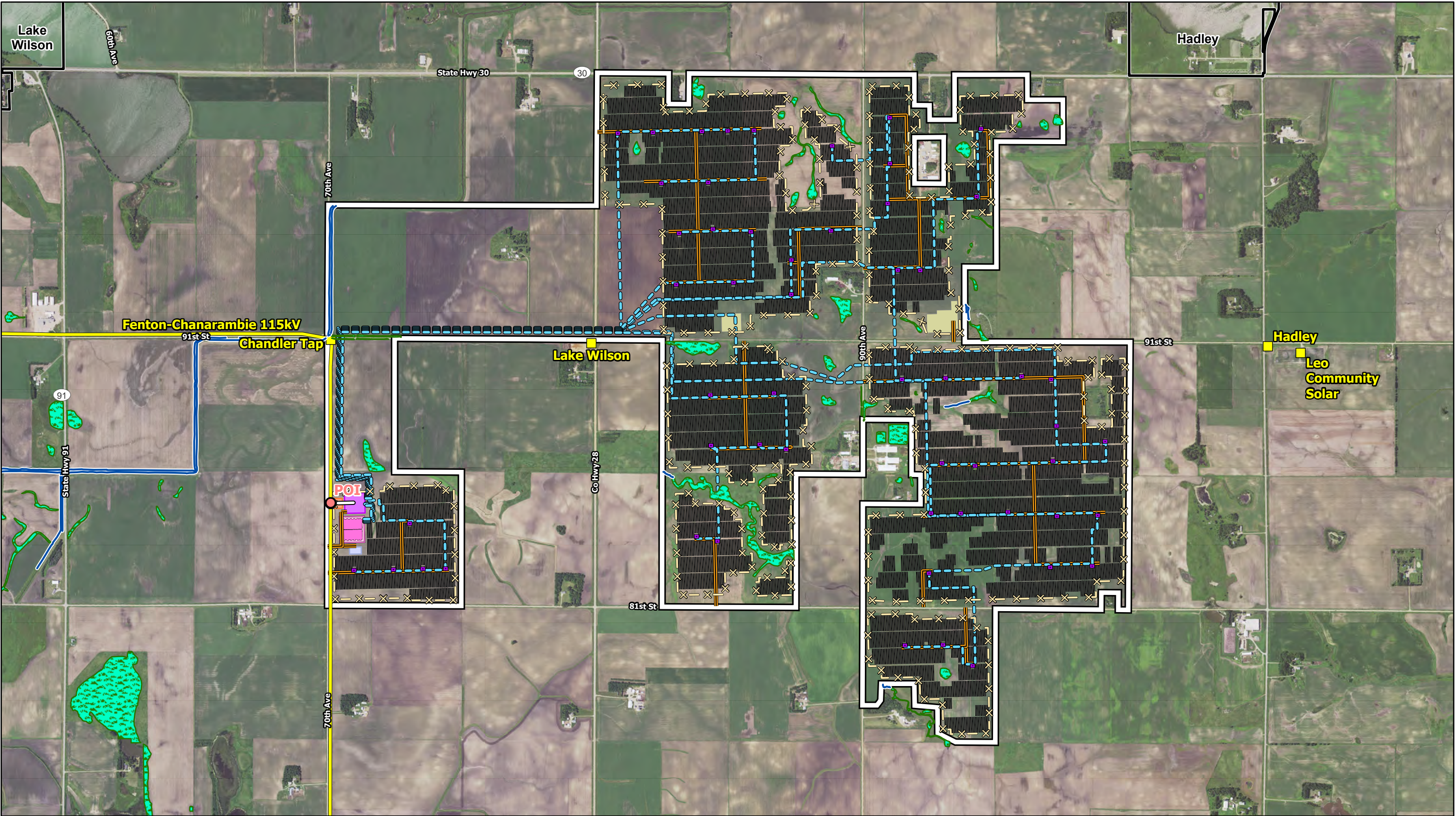


Lake Wilson Solar Project

Murray County, Minnesota

Project Interconnection Facilities

FIGURE 3 (January, 2023)



Data Source(s): Westwood (2023); NAIP (2019); U.S. Census Bureau (2020); Ventyx Velocity Suite (2021); MNDOT (2021); USFWS NWI (2016); USGS NHD (2015). Existing pipeline routes are approximate.



Toll Free (888) 937-5150 westwoodps.com
Westwood Professional Services, Inc.

Legend

- Project Area
- Point of Interconnection (POI)
- Project Gen-Tie Line

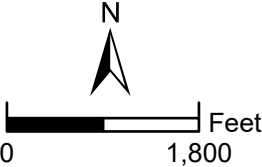
- Proposed Trackers
- Array Fence
- Access Road
- AC Feeder

- Proposed Inverter
- Proposed Switchyard
- Proposed Substation

- Proposed Battery Energy Storage System
- Proposed O&M Facility
- Proposed Laydown Yard

- Field Delineated Waterway
- Field Delineated Wetland
- Municipal Boundary

- Existing Substation
- Fenton-Chanarambie 115kV Transmission Line



Lake Wilson Solar Project

Murray County, Minnesota

Preliminary
Facility Design

FIGURE 4 (January, 2023)