

Local Agencies

Blue Earth County

Blue Earth County Meeting

When: 2/15/17 @ 2:00 p.m.

Attendees

- Xcel Energy: Tom Hillstrom, Siting & Land Rights; Trisha Rosenfeld, Community Relations; Sarah Gedrose, Communications
- Blue Earth County: Scott Fichtner, Director Environmental Services, Aaron Stubbs, Land Use Planner, Chris Meeks, Land Use Specialist

Topic: Xcel Energy briefed officials on the upcoming Huntley-Wilmarth project and looked for feedback in routing options.

Notes

- After completion of the presentation County Xcel mentioned it would be helpful to know about upcoming road projects in the area. The County said there are not any major ones, and two large projects, Highway 22 and Old 66, are going to be complete in the next couple years.
- County asked if there would be more solar gardens because of this project. Trisha explained the solar gardens are not related to the transmission line.
- County asked about how we avoid stray voltage on transmission lines. Tom explained this is typically a distribution issue and that if there is ever a problem, we look to fix it with proper grounding.
- County asked if the power will flow to Mankato. We explained it flows through Mankato and to the Twin Cities.
- The County confirmed they do the wetland permits for the area.
- County asked if Xcel buys easements from farmers, and we confirmed that we do for transmission lines.
- Land Use Planner Stubbs brought up the idea of using ditches for the transmission lines since it wouldn't interfere as much with farming land. Director Fichtner said that wouldn't work due to the curves of the ditches.
- County mentioned a bike trail along County Road 90 might be a good site to follow, and there is currently annexation taking place between Mankato and Bentley?
- Fichtner mentioned he would reach out to the Highway engineer to get input on the project



414 Nicollet Mall
Minneapolis, MN 55401

1-800-895-4999
Xcelenergy.com

August 29, 2017

Reginald Liddell
District Conservationist
Blue Earth County NRCS Office
1160 Victory Dr
Mankato, MN 56001-5307

**Re: 345 kV Huntley to Wilmarth Transmission Line Project
Blue Earth, Faribault, Nicollet, and Martin County, Minnesota**

Dear Reginald Liddell:

Xcel Energy is proposing to construct a new 345 kilovolt (kV) high voltage transmission line (HVTL), extending from Xcel's Wilmarth Generating Station located in Mankato in Blue Earth County, to an ITC Midwest Huntley Substation south of Winnebago in Faribault County, just south of the intersection of U.S. Highway 169 and 345th Avenue.

The project, referred to as the Huntley to Wilmarth 345 kV Project (Project), was identified by the Midcontinent Independent System Operator (MISO) as a market efficiency project to provide access to lower cost energy sources (e.g., wind energy) that currently cannot be fully utilized due to lack of adequate transmission. The Project is part of infrastructure improvements needed to allow advancement of renewable energy—particularly wind energy—in the state, throughout MISO, and nationally. Xcel Energy and ITC Midwest will co-own the new transmission line and Xcel Energy is acting as lead developer of the Project. The Project's endpoints were identified by MISO analysts specifically to allow the next increment of transmission capacity in the most efficient way.

Xcel Energy is in the process of evaluating route alternatives within the study area based on analysis of publicly available data that minimize socioeconomic and environmental impacts, maximize co-location with other infrastructure, and satisfy regulatory routing and facility siting requirements. Xcel Energy identified many potential route options within a large study area in order to obtain agency and public input to support the route selection process. Field review of final route alternatives are in the process of being conducted to clarify or confirm potential route issues or constraints. The attached map depicts the study area for the proposed Project and presents a selection of preliminary route options. If you prefer to review the data in a GIS shapefile format, please let us know and we will

Xcel Energy intends to file a Certificate of Need (CON) and Route Permit (RP) Application by the end of 2017, in accordance with Minnesota Rules (Minn. R.) 7849 and Minn. R. 7850 respectively, to the Minnesota Public Utilities Commission (PUC) for the Project. As part of this process, Xcel Energy is conducting public meetings and stakeholder outreach, as well as coordinate with applicable regulatory and government offices. We appreciate your assistance as we evaluate siting and routing information and work through the PUC's approval process. Please let us know if you have information we should consider in evaluating routes.

If you prefer to review the routes Xcel Energy is studying in a GIS shapefile format, or if you have questions and would like additional information about the proposed Project, please contact me at Thomas.Hillstrom@xcelenergy.com or (612) 330-5835.

Sincerely,

A handwritten signature in black ink, appearing to read "T Hillstrom". The signature is written in a cursive, flowing style.

Thomas Hillstrom
Principal Permitting Agent

Enclosure: Project Location Map



414 Nicollet Mall
Minneapolis, MN 55401

1-800-895-4999
Xcelenergy.com

August 29, 2017

Jerad Bach
District Manager
Blue Earth County Soil and Water Conservation District
415 S Grove St., Suite 8
Blue Earth, MN 56013

**Re: 345 kV Huntley to Wilmarth Transmission Line Project
Blue Earth, Faribault, Nicollet, and Martin County, Minnesota**

Dear Jerad Bach:

Xcel Energy is proposing to construct a new 345 kilovolt (kV) high voltage transmission line (HVTL), extending from Xcel's Wilmarth Generating Station located in Mankato in Blue Earth County, to an ITC Midwest Huntley Substation south of Winnebago in Faribault County, just south of the intersection of U.S. Highway 169 and 345th Avenue.

The project, referred to as the Huntley to Wilmarth 345 kV Project (Project), was identified by the Midcontinent Independent System Operator (MISO) as a market efficiency project to provide access to lower cost energy sources (e.g., wind energy) that currently cannot be fully utilized due to lack of adequate transmission. The Project is part of infrastructure improvements needed to allow advancement of renewable energy—particularly wind energy—in the state, throughout MISO, and nationally. Xcel Energy and ITC Midwest will co-own the new transmission line and Xcel Energy is acting as lead developer of the Project. The Project's endpoints were identified by MISO analysts specifically to allow the next increment of transmission capacity in the most efficient way.

Xcel Energy is in the process of evaluating route alternatives within the study area based on analysis of publicly available data that minimize socioeconomic and environmental impacts, maximize co-location with other infrastructure, and satisfy regulatory routing and facility siting requirements. Xcel Energy identified many potential route options within a large study area in order to obtain agency and public input to support the route selection process. Field review of final route alternatives are in the process of being conducted to clarify or confirm potential route issues or constraints. The attached map depicts the study area for the proposed Project and presents a selection of preliminary route options. If you prefer to review the data in a GIS shapefile format, please let us know and we will

Xcel Energy intends to file a Certificate of Need (CON) and Route Permit (RP) Application by the end of 2017, in accordance with Minnesota Rules (Minn. R.) 7849 and Minn. R. 7850 respectively, to the Minnesota Public Utilities Commission (PUC) for the Project. As part of this process, Xcel Energy is conducting public meetings and stakeholder outreach, as well as coordinate with applicable regulatory and government offices. We appreciate your assistance as we evaluate siting and routing information and work through the PUC's approval process. Please let us know if you have information we should consider in evaluating routes.

If you prefer to review the routes Xcel Energy is studying in a GIS shapefile format, or if you have questions and would like additional information about the proposed Project, please contact me at Thomas.Hillstrom@xcelenergy.com or (612) 330-5835.

Sincerely,

A handwritten signature in black ink, appearing to read "T Hillstrom". The signature is written in a cursive, flowing style.

Thomas Hillstrom
Principal Permitting Agent

Enclosure: Project Location Map

Faribault County

Faribault County Meeting

When: 3/23/17 @ 11:00AM

Attendees

- Xcel Energy: Tom Hillstrom, Trisha Rosenfeld
- ITC: Lori Broghammer
- Faribault County: Loria Rebuffoni Planning and Zoning Administrator Tim Clawson (Executive Director, Faribault County Development Corp. (FCDC))

Topic: Xcel Energy briefed officials on the upcoming Huntley-Wilmarth project and looked for feedback in routing options.

Notes

- Loria and Tim were familiar with transmission and the permitting process due to the ITC project currently under construction nearby.
- Staff were impressed with ITC's handling of landowner issues during construction of their current MVP 3 345kV transmission line build
- Staff indicated that a wind developer (EDF) has been talking with landowners in the area and there are some landowners that oppose wind development
- Staff is having a difficult time finding developer's contact information, Lori offered to make contact with EDC contact in Iowa to assist with contact
- Further, some may associate our line with wind development
- Staff suggested that we emphasize economic benefits of the project (need, tax base, construction spending, jobs)
- Staff also were interested in us giving a county board presentation



414 Nicollet Mall
Minneapolis, MN 55401

1-800-895-4999
Xcelenergy.com

August 29, 2017

Josiah Olson
District Conservationist
Faribault County NRCS Office
411 S Grove St Ste 1
Blue Earth, MN 56013-2600

**Re: 345 kV Huntley to Wilmarth Transmission Line Project
Blue Earth, Faribault, Nicollet, and Martin County, Minnesota**

Dear Josiah Olson:

Xcel Energy is proposing to construct a new 345 kilovolt (kV) high voltage transmission line (HVTL), extending from Xcel's Wilmarth Generating Station located in Mankato in Blue Earth County, to an ITC Midwest Huntley Substation south of Winnebago in Faribault County, just south of the intersection of U.S. Highway 169 and 345th Avenue.

The project, referred to as the Huntley to Wilmarth 345 kV Project (Project), was identified by the Midcontinent Independent System Operator (MISO) as a market efficiency project to provide access to lower cost energy sources (e.g., wind energy) that currently cannot be fully utilized due to lack of adequate transmission. The Project is part of infrastructure improvements needed to allow advancement of renewable energy—particularly wind energy—in the state, throughout MISO, and nationally. Xcel Energy and ITC Midwest will co-own the new transmission line and Xcel Energy is acting as lead developer of the Project. The Project's endpoints were identified by MISO analysts specifically to allow the next increment of transmission capacity in the most efficient way.

Xcel Energy is in the process of evaluating route alternatives within the study area based on analysis of publicly available data that minimize socioeconomic and environmental impacts, maximize co-location with other infrastructure, and satisfy regulatory routing and facility siting requirements. Xcel Energy identified many potential route options within a large study area in order to obtain agency and public input to support the route selection process. Field review of final route alternatives are in the process of being conducted to clarify or confirm potential route issues or constraints. The attached map depicts the study area for the proposed Project and presents a selection of preliminary route options. If you prefer to review the data in a GIS shapefile format, please let us know and we will

Xcel Energy intends to file a Certificate of Need (CON) and Route Permit (RP) Application by the end of 2017, in accordance with Minnesota Rules (Minn. R.) 7849 and Minn. R. 7850 respectively, to the Minnesota Public Utilities Commission (PUC) for the Project. As part of this process, Xcel Energy is conducting public meetings and stakeholder outreach, as well as coordinate with applicable regulatory and government offices. We appreciate your assistance as we evaluate siting and routing information and work through the PUC's approval process. Please let us know if you have information we should consider in evaluating routes.

If you prefer to review the routes Xcel Energy is studying in a GIS shapefile format, or if you have questions and would like additional information about the proposed Project, please contact me at Thomas.Hillstrom@xcelenergy.com or (612) 330-5835.

Sincerely,

A handwritten signature in black ink, appearing to read "T Hillstrom". The signature is fluid and cursive, with the first letter of the last name being a large, stylized 'H'.

Thomas Hillstrom
Principal Permitting Agent

Enclosure: Project Location Map



414 Nicollet Mall
Minneapolis, MN 55401

1-800-895-4999
Xcelenergy.com

August 29, 2017

Shane Johnson
District Manager
Faribault County Soil and Water Conservation District
415 S Grove St., Suite 8
Blue Earth, MN 56013

**Re: 345 kV Huntley to Wilmarth Transmission Line Project
Blue Earth, Faribault, Nicollet, and Martin County, Minnesota**

Dear Shane Johnson:

Xcel Energy is proposing to construct a new 345 kilovolt (kV) high voltage transmission line (HVTL), extending from Xcel's Wilmarth Generating Station located in Mankato in Blue Earth County, to an ITC Midwest Huntley Substation south of Winnebago in Faribault County, just south of the intersection of U.S. Highway 169 and 345th Avenue.

The project, referred to as the Huntley to Wilmarth 345 kV Project (Project), was identified by the Midcontinent Independent System Operator (MISO) as a market efficiency project to provide access to lower cost energy sources (e.g., wind energy) that currently cannot be fully utilized due to lack of adequate transmission. The Project is part of infrastructure improvements needed to allow advancement of renewable energy—particularly wind energy—in the state, throughout MISO, and nationally. Xcel Energy and ITC Midwest will co-own the new transmission line and Xcel Energy is acting as lead developer of the Project. The Project's endpoints were identified by MISO analysts specifically to allow the next increment of transmission capacity in the most efficient way.

Xcel Energy is in the process of evaluating route alternatives within the study area based on analysis of publicly available data that minimize socioeconomic and environmental impacts, maximize co-location with other infrastructure, and satisfy regulatory routing and facility siting requirements. Xcel Energy identified many potential route options within a large study area in order to obtain agency and public input to support the route selection process. Field review of final route alternatives are in the process of being conducted to clarify or confirm potential route issues or constraints. The attached map depicts the study area for the proposed Project and presents a selection of preliminary route options. If you prefer to review the data in a GIS shapefile format, please let us know and we will

Xcel Energy intends to file a Certificate of Need (CON) and Route Permit (RP) Application by the end of 2017, in accordance with Minnesota Rules (Minn. R.) 7849 and Minn. R. 7850 respectively, to the Minnesota Public Utilities Commission (PUC) for the Project. As part of this process, Xcel Energy is conducting public meetings and stakeholder outreach, as well as coordinate with applicable regulatory and government offices. We appreciate your assistance as we evaluate siting and routing information and work through the PUC's approval process. Please let us know if you have information we should consider in evaluating routes.

If you prefer to review the routes Xcel Energy is studying in a GIS shapefile format, or if you have questions and would like additional information about the proposed Project, please contact me at Thomas.Hillstrom@xcelenergy.com or (612) 330-5835.

Sincerely,

A handwritten signature in black ink, appearing to read "T Hillstrom". The signature is fluid and cursive, with the first letter of the last name being a large, stylized 'H'.

Thomas Hillstrom
Principal Permitting Agent

Enclosure: Project Location Map

Martin County

Martin County Meeting

When: 3/23/17 @ 9:30AM

Attendees

- Xcel Energy: Tom Hillstrom, Trisha Rosenfeld,
- ITC: Lori Broghammer
- Martin County: Scott Higgins, County Coordinator: Pam Flitter, Zoning Official

Topic: Xcel Energy briefed officials on the upcoming Huntley-Wilmarth project and looked for feedback in routing options.

Notes

- Scott and Pam were familiar with the transmission permitting and construction process due to construction of ITCs project.
- County staff noted that ITC construction on MVP 3 345kV project is going well and landowners seem to be happy with the project
- We noted that only a small portion of Martin County is in our study area only a short portion of routes would possibly be in the County.
- Staff did not have any routing suggestions. Staff requested that we do a short presentation to the County Board and gave some possible dates (April 18th, May 2nd or May 16th)
- Martin County GIS contact Mike Forestner 238 3130



414 Nicollet Mall
Minneapolis, MN 55401

1-800-895-4999
Xcelenergy.com

August 29, 2017

Betsy Norland
District Conservationist
Martin County NRCS Office
923 N State St, Suite 110
Farimont, MN 56031

**Re: 345 kV Huntley to Wilmarth Transmission Line Project
Blue Earth, Faribault, Nicollet, and Martin County, Minnesota**

Dear Betsy Norland:

Xcel Energy is proposing to construct a new 345 kilovolt (kV) high voltage transmission line (HVTL), extending from Xcel's Wilmarth Generating Station located in Mankato in Blue Earth County, to an ITC Midwest Huntley Substation south of Winnebago in Faribault County, just south of the intersection of U.S. Highway 169 and 345th Avenue.

The project, referred to as the Huntley to Wilmarth 345 kV Project (Project), was identified by the Midcontinent Independent System Operator (MISO) as a market efficiency project to provide access to lower cost energy sources (e.g., wind energy) that currently cannot be fully utilized due to lack of adequate transmission. The Project is part of infrastructure improvements needed to allow advancement of renewable energy—particularly wind energy—in the state, throughout MISO, and nationally. Xcel Energy and ITC Midwest will co-own the new transmission line and Xcel Energy is acting as lead developer of the Project. The Project's endpoints were identified by MISO analysts specifically to allow the next increment of transmission capacity in the most efficient way.

Xcel Energy is in the process of evaluating route alternatives within the study area based on analysis of publicly available data that minimize socioeconomic and environmental impacts, maximize co-location with other infrastructure, and satisfy regulatory routing and facility siting requirements. Xcel Energy identified many potential route options within a large study area in order to obtain agency and public input to support the route selection process. Field review of final route alternatives are in the process of being conducted to clarify or confirm potential route issues or constraints. The attached map depicts the study area for the proposed Project and presents a selection of preliminary route options. If you prefer to review the data in a GIS shapefile format, please let us know and we will

Xcel Energy intends to file a Certificate of Need (CON) and Route Permit (RP) Application by the end of 2017, in accordance with Minnesota Rules (Minn. R.) 7849 and Minn. R. 7850 respectively, to the Minnesota Public Utilities Commission (PUC) for the Project. As part of this process, Xcel Energy is conducting public meetings and stakeholder outreach, as well as coordinate with applicable regulatory and government offices. We appreciate your assistance as we evaluate siting and routing information and work through the PUC's approval process. Please let us know if you have information we should consider in evaluating routes.

If you prefer to review the routes Xcel Energy is studying in a GIS shapefile format, or if you have questions and would like additional information about the proposed Project, please contact me at Thomas.Hillstrom@xcelenergy.com or (612) 330-5835.

Sincerely,

A handwritten signature in black ink, appearing to read "T Hillstrom". The signature is written in a cursive, flowing style.

Thomas Hillstrom
Principal Permitting Agent

Enclosure: Project Location Map



414 Nicollet Mall
Minneapolis, MN 55401

1-800-895-4999
Xcelenergy.com

August 29, 2017

Rich Perrine
District Manager
Martin County Soil and Water Conservation District
923 N State St Ste 110
Fairmont, MN 56031

**Re: 345 kV Huntley to Wilmarth Transmission Line Project
Blue Earth, Faribault, Nicollet, and Martin County, Minnesota**

Dear Rich Perrine:

Xcel Energy is proposing to construct a new 345 kilovolt (kV) high voltage transmission line (HVTL), extending from Xcel's Wilmarth Generating Station located in Mankato in Blue Earth County, to an ITC Midwest Huntley Substation south of Winnebago in Faribault County, just south of the intersection of U.S. Highway 169 and 345th Avenue.

The project, referred to as the Huntley to Wilmarth 345 kV Project (Project), was identified by the Midcontinent Independent System Operator (MISO) as a market efficiency project to provide access to lower cost energy sources (e.g., wind energy) that currently cannot be fully utilized due to lack of adequate transmission. The Project is part of infrastructure improvements needed to allow advancement of renewable energy—particularly wind energy—in the state, throughout MISO, and nationally. Xcel Energy and ITC Midwest will co-own the new transmission line and Xcel Energy is acting as lead developer of the Project. The Project's endpoints were identified by MISO analysts specifically to allow the next increment of transmission capacity in the most efficient way.

Xcel Energy is in the process of evaluating route alternatives within the study area based on analysis of publicly available data that minimize socioeconomic and environmental impacts, maximize co-location with other infrastructure, and satisfy regulatory routing and facility siting requirements. Xcel Energy identified many potential route options within a large study area in order to obtain agency and public input to support the route selection process. Field review of final route alternatives are in the process of being conducted to clarify or confirm potential route issues or constraints. The attached map depicts the study area for the proposed Project and presents a selection of preliminary route options. If you prefer to review the data in a GIS shapefile format, please let us know and we will

Xcel Energy intends to file a Certificate of Need (CON) and Route Permit (RP) Application by the end of 2017, in accordance with Minnesota Rules (Minn. R.) 7849 and Minn. R. 7850 respectively, to the Minnesota Public Utilities Commission (PUC) for the Project. As part of this process, Xcel Energy is conducting public meetings and stakeholder outreach, as well as coordinate with applicable regulatory and government offices. We appreciate your assistance as we evaluate siting and routing information and work through the PUC's approval process. Please let us know if you have information we should consider in evaluating routes.

If you prefer to review the routes Xcel Energy is studying in a GIS shapefile format, or if you have questions and would like additional information about the proposed Project, please contact me at Thomas.Hillstrom@xcelenergy.com or (612) 330-5835.

Sincerely,

A handwritten signature in black ink, appearing to read "T Hillstrom". The signature is written in a cursive, flowing style.

Thomas Hillstrom
Principal Permitting Agent

Enclosure: Project Location Map

Nicollet County

Nicollet County Meeting

When: 9/28/17 @ 11:00 a.m.

Attendees

- Xcel Energy: Tom Hillstrom, Siting & Land Rights;
- Nicollet County: Mandy Landkamer, Seth Greenwood, *third person didn't get name*

Topic: Discuss additional route options recently issued for Belgrade township.

Notes

- County was interested in hearing about new route possibilities
- County was concerned about a route near Minnemishinona Falls in Belgrade township
 - Tom explained that the route near the waterfall would go along Judson Bottom Road and that there were many obstacles to this route including the waterfall park, the scenic by status of Judson Bottom Road and the dense concentration of cultural resources.
- County staff asked about the process
 - Tom described the process and timelines

Nicollet County Meeting

When: 2/15/17 @ 11:00 a.m.

Attendees

- Xcel Energy: Tom Hillstrom, Siting & Land Rights; Trisha Rosenfeld, Community Relations; Sarah Gedrose, Communications
- Nicollet County: Mandy Landkamer, Director, Jon Hammel, Deputy Zoning Administrator/Planner

Topic: Xcel Energy briefed officials on the upcoming Huntley-Wilmarth project and looked for feedback in routing options.

Notes

- After briefing county officials, Landkamer commented everything sounded pretty straight forward and they had been through the process in the past with wind farms in the county
- The County said they would send their zoning map
- Mentioned North Mankato may be using County Road 6 as a future boundary development
- The County stated using an existing corridor is preferable
- County mentioned to avoid excavation on river bottom roads
- The County said they would share contact information for Belgrade Township as there is a new board after elections. The County mentioned Belgrade Township may like to be heavily involved in the process.
- Landkamer asked if we can put a route through a wetland. We said yes, but it does require special permits and we would need to do that permitting through their County office.
- Landkamer mentioned a possible route by Minnemishinona Falls in Belgrade township
- Landkamer as for a place where they could find similar looking lines. We mentioned the CapX2020 lines in Belle Plaine, but that they are larger than the ones we are using. We showed examples of possible structure types in the presentation.
- Hillstrom asked if the County had access to address information for landowners, the County said they could send mapping parcel information.

October 10, 2017

Email: huntleywilmarth@xcelenergy.com

RE: Proposed Transmission Line Segment within Nicollet County

This letter is in regards to the Huntley-Wilmarth 345kV Transmission Line Project that's proposed by Xcel Energy and ITC Midwest. Nicollet County understands the need for a new transmission line to provide low-cost electricity for customers in our region and to reduce congestion on the existing transmission grid; however segments 15, 20, 47, 48, 49, 50, 51, 53, 60, 66, 67, 68, 69, 70, and 71 negatively impact Nicollet County and its' residents.

Segments 15, 20, 47, 48, 49, 50, 51, 53, 60, 66, 67, 68, 69, 70, and 71 proposed by Xcel Energy, ITC Midwest, or local landowners; negatively affect residents, cultural resources, scenic qualities, economic growth, and the environment in Nicollet County by the following:

1. Impede existing and future long term development of City of North Mankato's western residential and industrial growth areas.
2. Severely impact the scenic resources of County State Aid Highway 41 which is designated as a Minnesota River Valley National Scenic Byway.
3. Severely impact the scenic and cultural resources of Nicollet County's Minnemishinona Falls Park.
4. Severely impact existing Native American burial mounds along County State Aid Highway 41 and the Minnesota River Valley.
5. Environmental damage of the Minnesota River Bluff line that is comprised of steep slopes, ravines, and highly erodible soils.
6. Impacts to farmland.

The above impacts can be eliminated or greatly reduced if the proposed Huntley-Wilmarth 345kV Transmission Line Project utilizes existing transmission corridors that are identified in the proposed project as segments 10, 31, and 63.

On behalf of the Nicollet County Board of Commissioners, I request that Xcel Energy and ITC Midwest remove proposed segments 15, 20, 47, 48, 49, 50, 51, 53, 60, 66, 67, 68, 69, 70, and 71 from the Huntley-Wilmarth 345kV Transmission Line Project from their application to the Minnesota Public Utilities Commission (See Enclosed Resolution).

Public Works Department
1700 Sunrise Drive, St. Peter, MN 56082
Telephone 507-931-1760
seth.greenwood@co.nicollet.mn.us

Providing efficient services with innovation and accountability.

Sincerely,

A handwritten signature in black ink, appearing to read 'Seth Greenwood', with a large, stylized loop at the end.

Seth Greenwood, P.E.

Public Works Director/County Engineer

Enclosures: Resolution; Maps A1 and A2

Cc: Nicollet County Board of Commissioners; Ryan Krosch, County Administrator;
Mandy Landkamer, Property and Public Services Department



RESOLUTION

WHEREAS, Xcel Energy and ITC have proposed construction of a 345kV transmission line connecting the Huntley and Wilmarth Substations; and

WHEREAS, segments 15, 20, 47, 48, 49, 50, 51, 53, 60, 66, 67, 68, 69, 70, and 71 of the Huntley-Wilmarth 345kV transmission line project will negatively impact existing and future development in North Mankato, the environment, Minnemishinona Falls Park, scenic and cultural resources, and the quality of life in Nicollet County; and

WHEREAS, the Nicollet County Board of Commissioners agrees that an efficient energy grid system is important to its residents; and

WHEREAS, an efficient energy grid can be achieved without segments 15, 20, 47, 48, 49, 50, 51, 53, 60, 66, 67, 68, 69, 70, and 71 being included in Xcel Energy's application to the Minnesota Public Utilities Commission for the Huntley-Wilmarth 345kV transmission line.

NOW, THEREFORE IT BE RESOLVED, that the Nicollet County Board of Commissioners requests Xcel Energy and ITC remove segments 15, 20, 47, 48, 49, 50, 51, 53, 60, 66, 67, 68, 69, 70, and 71 for the Huntley-Wilmarth 345kV Transmission Line Project from their application to the Minnesota Public Utilities Commission.

Dated: October 10, 2017

Marie Dranttel, Chair
Nicollet County Board of Commissioners

ATTEST:

Jamie Haefner, Assistant County Administrator
Clerk to the County Board

A1



Segments 2, 62 and 63:
Proposed line located south of existing line.
Existing line may or may not be removed.

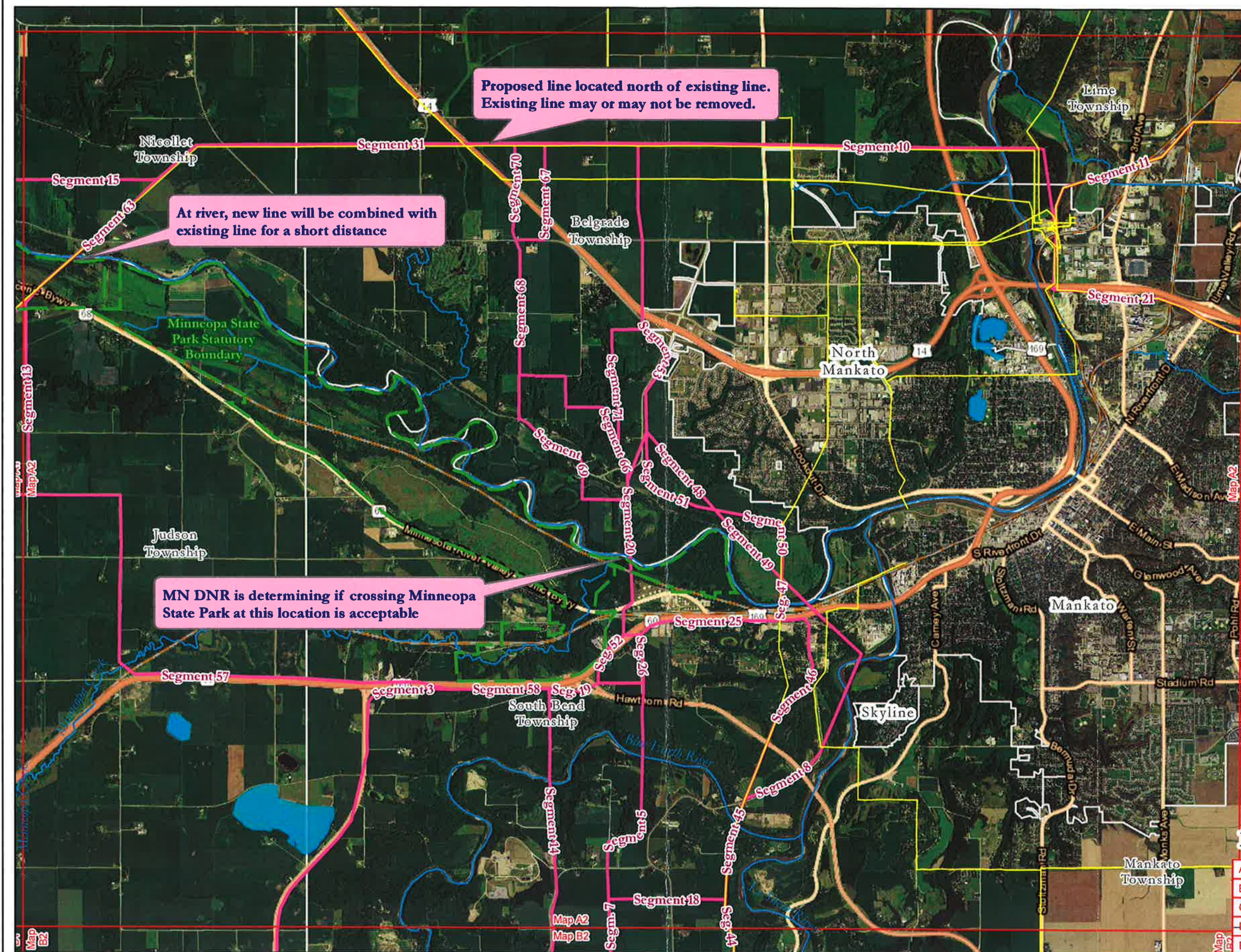
Map A1

A1	A2	A3
B1	B2	B3
C1	C2	C3
D1	D2	D3
E1	E2	E3

Huntley-Wilmarth 345kV Transmission Preliminary Route Options

0 5,000 10,000 Feet
1:63,660 1 inch equals 1 mile

Existing Transmission Preliminary Route Option



Proposed line located north of existing line.
Existing line may or may not be removed.

At river, new line will be combined with
existing line for a short distance

MN DNR is determining if crossing Minneopa
State Park at this location is acceptable

Map A2

A1	A2	A3
B1	B2	B3
C1	C2	C3
D1	D2	D3
E1	E2	E3

Huntley-Wilmarth 345kV Transmission Preliminary Route Options

0 5,000 10,000 Feet
1:63,660 1 inch equals 1 mile

Existing Transmission Preliminary Route Option



414 Nicollet Mall
Minneapolis, MN 55401

1-800-895-4999
Xcelenergy.com

August 29, 2017

April Sullivan
District Conservationist
Nicollet County NRCS Office
111 6th St (PO Box 161)
Gaylord, MN 55334

**Re: 345 kV Huntley to Wilmarth Transmission Line Project
Blue Earth, Faribault, Nicollet, and Martin County, Minnesota**

Dear April Sullivan:

Xcel Energy is proposing to construct a new 345 kilovolt (kV) high voltage transmission line (HVTL), extending from Xcel's Wilmarth Generating Station located in Mankato in Blue Earth County, to an ITC Midwest Huntley Substation south of Winnebago in Faribault County, just south of the intersection of U.S. Highway 169 and 345th Avenue.

The project, referred to as the Huntley to Wilmarth 345 kV Project (Project), was identified by the Midcontinent Independent System Operator (MISO) as a market efficiency project to provide access to lower cost energy sources (e.g., wind energy) that currently cannot be fully utilized due to lack of adequate transmission. The Project is part of infrastructure improvements needed to allow advancement of renewable energy—particularly wind energy—in the state, throughout MISO, and nationally. Xcel Energy and ITC Midwest will co-own the new transmission line and Xcel Energy is acting as lead developer of the Project. The Project's endpoints were identified by MISO analysts specifically to allow the next increment of transmission capacity in the most efficient way.

Xcel Energy is in the process of evaluating route alternatives within the study area based on analysis of publicly available data that minimize socioeconomic and environmental impacts, maximize co-location with other infrastructure, and satisfy regulatory routing and facility siting requirements. Xcel Energy identified many potential route options within a large study area in order to obtain agency and public input to support the route selection process. Field review of final route alternatives are in the process of being conducted to clarify or confirm potential route issues or constraints. The attached map depicts the study area for the proposed Project and presents a selection of preliminary route options. If you prefer to review the data in a GIS shapefile format, please let us know and we will

Xcel Energy intends to file a Certificate of Need (CON) and Route Permit (RP) Application by the end of 2017, in accordance with Minnesota Rules (Minn. R.) 7849 and Minn. R. 7850 respectively, to the Minnesota Public Utilities Commission (PUC) for the Project. As part of this process, Xcel Energy is conducting public meetings and stakeholder outreach, as well as coordinate with applicable regulatory and government offices. We appreciate your assistance as we evaluate siting and routing information and work through the PUC's approval process. Please let us know if you have information we should consider in evaluating routes.

If you prefer to review the routes Xcel Energy is studying in a GIS shapefile format, or if you have questions and would like additional information about the proposed Project, please contact me at Thomas.Hillstrom@xcelenergy.com or (612) 330-5835.

Sincerely,

A handwritten signature in black ink, appearing to read "T Hillstrom". The signature is fluid and cursive, with the first letter of the last name being a large, stylized 'H'.

Thomas Hillstrom
Principal Permitting Agent

Enclosure: Project Location Map



414 Nicollet Mall
Minneapolis, MN 55401

1-800-895-4999
Xcelenergy.com

August 29, 2017

Kevin Ostermann
District Manager
Nicollet County Soil and Water Conservation District
424 S Minnesota Ave
St Peter, MN 56082

**Re: 345 kV Huntley to Wilmarth Transmission Line Project
Blue Earth, Faribault, Nicollet, and Martin County, Minnesota**

Dear Kevin Ostermann:

Xcel Energy is proposing to construct a new 345 kilovolt (kV) high voltage transmission line (HVTL), extending from Xcel's Wilmarth Generating Station located in Mankato in Blue Earth County, to an ITC Midwest Huntley Substation south of Winnebago in Faribault County, just south of the intersection of U.S. Highway 169 and 345th Avenue.

The project, referred to as the Huntley to Wilmarth 345 kV Project (Project), was identified by the Midcontinent Independent System Operator (MISO) as a market efficiency project to provide access to lower cost energy sources (e.g., wind energy) that currently cannot be fully utilized due to lack of adequate transmission. The Project is part of infrastructure improvements needed to allow advancement of renewable energy—particularly wind energy—in the state, throughout MISO, and nationally. Xcel Energy and ITC Midwest will co-own the new transmission line and Xcel Energy is acting as lead developer of the Project. The Project's endpoints were identified by MISO analysts specifically to allow the next increment of transmission capacity in the most efficient way.

Xcel Energy is in the process of evaluating route alternatives within the study area based on analysis of publicly available data that minimize socioeconomic and environmental impacts, maximize co-location with other infrastructure, and satisfy regulatory routing and facility siting requirements. Xcel Energy identified many potential route options within a large study area in order to obtain agency and public input to support the route selection process. Field review of final route alternatives are in the process of being conducted to clarify or confirm potential route issues or constraints. The attached map depicts the study area for the proposed Project and presents a selection of preliminary route options. If you prefer to review the data in a GIS shapefile format, please let us know and we will

Xcel Energy intends to file a Certificate of Need (CON) and Route Permit (RP) Application by the end of 2017, in accordance with Minnesota Rules (Minn. R.) 7849 and Minn. R. 7850 respectively, to the Minnesota Public Utilities Commission (PUC) for the Project. As part of this process, Xcel Energy is conducting public meetings and stakeholder outreach, as well as coordinate with applicable regulatory and government offices. We appreciate your assistance as we evaluate siting and routing information and work through the PUC's approval process. Please let us know if you have information we should consider in evaluating routes.

If you prefer to review the routes Xcel Energy is studying in a GIS shapefile format, or if you have questions and would like additional information about the proposed Project, please contact me at Thomas.Hillstrom@xcelenergy.com or (612) 330-5835.

Sincerely,

A handwritten signature in black ink, appearing to read "T Hillstrom". The signature is fluid and cursive, with the first letter of the last name being a large, stylized 'H'.

Thomas Hillstrom
Principal Permitting Agent

Enclosure: Project Location Map

City of Mankato

City of Mankato Meeting

When: 8/22/17

Attendees

- Xcel Energy: Tom Hillstrom, Siting & Land Rights; Trisha Rosenfeld, Community Relations
- Mankato: Pat Hentges, City Manager, Paul Vogel, City Community Development Director

Topic: Discuss potential routes along east side of Mankato

Notes

- Discussed routes that may affect City of Mankato,
- Near East Loop –
 - Would affect platted development from Madison south to Hwy 83 (approx. 2 miles)
 - Likely future development impacts south and west of Hwy 83
- East Route
 - The preliminary route is located 1/4 mile west of the development boundary between Mankato and Eagle Lake (KTOE road aka 594th Avenue). The city would prefer this route to be on 594th Ave or moved another ¼ mile west.
 - Future development along this route is at least 20 years out

City staff said that they would formalize their comments and forward them to us. This would likely be in the form of a council resolution sent around October.

City of Mankato Meeting

When: 1/31/17 @ 11:00AM

Attendees

- Xcel Energy: Tom Hillstrom, Siting & Land Rights; Trisha Rosenfeld, Community Relations; Sarah Gedrose, Communications
- Mankato: Pat Hentges, City Manager, Paul Vogel, City Community Development Director

Topic: Xcel Energy briefed officials on the upcoming Huntley-Wilmarth project and looked for feedback in routing options.

Notes

- Mankato appreciated the opportunity to be consulted at the beginning phase of the project.
- Regarding potential routes east of Mankato, City staff stated their preference for using an existing corridor if possible
- Mankato asked about redundancy on the lines and we explained the purpose of the project is to have an added back-up if the existing 345 line would go down.
- Mankato asked about the right-of-way needed if we rebuilt on the 115 kV line. We stated existing right-of-way on lower voltage lines would be approximately 80 and 100 feet, and we would need 150 for the 345 kV line. Mankato stated that could be an issue as some new apartment buildings are built right up to the existing line.
- Mankato said the east side of Highway 22 is platted for residential. There is a development planned on Adams, and another called Prairie Wind Development near the new middle school. They are going to send their future land use map.
- Mankato said one option could be going down County Road 86 (also known as the "KTOE Road", shown as 594th St. on the map) and then go south. Go west on County Road 90.
- There is a new middle school at CR83 and TH22
- Mankato wondered whether the line could follow the 169 corridor. We said we would study this possibility.
- Mankato said it could work to go by the Aurora solar facility to the south of the community, or by the Walmart distribution center near an existing transmission line.
- Mankato requested we meet with them again before we have the public meetings to show them the routes
- Mankato asked when construction would start. We explained it would be two years for permitting and three years after that before the line would be complete.

10 Civic Center Plaza
Post Office 3368
Mankato, MN 56002-3368

Phone: (507) 387-8600
Fax: (507) 388-7530
www.mankatomn.gov



**Huntley-Wilmarth 345kV Transmission Blue Route Option
City of Mankato, MN Comments – Filing No. 2
December 14, 2017**

On December 6, 2017, the City of Mankato received from Xcel Energy a Notice of Certificate of Need Application for the Huntley-Wilmarth 345 kV Transmission Project in Blue Earth, Martin, Nicollet and Faribault counties, Minnesota MPUC Docket No. E002, ET6675/CN-17-184 (“the Notice”). The purpose of the comments in this filing is in regards to the information contained in the Notice regarding what is referred to as the “Blue Route Option”.

Comments:

1. Blue Route – Refer to Exhibit A. In the October 13, 2017 filing with the Public Utilities Commission in regards to Segment 11, the Blue Route alignment is located within the planning area of the City of Mankato and by agreement with Mankato Township non-farm development is prohibited unless annexed into the City of Mankato. Therefore, the City has extended land use and capital improvement planning into the area and adopted the proposed uses into the land use plan.

The Blue Route option is located in a planning area of rapid urbanization between the City of Mankato and Eagle Lake and will conflict and negatively impact the proposed and future development. The vast majority of development and population growth in the Mankato/North Mankato Urbanized Area (which includes the city of Eagle Lake) is occurring in this planning area. Since Census 2010, over 90% of the population growth in the Mankato/North Mankato Urbanized Area is occurring in the cities of Mankato and Eagle Lake and is associated with housing development within the area between the two cities in which the Blue Route is located. In the City of Mankato alone, 2,588 housing units were constructed in this planning area since 2010 and there is a high likelihood that the proposed transmission line would conflict with future development as summarized in the following comments.

See population facts below:

Mankato/North Mankato Urbanized Area Population Growth Since 2010 Census

Mankato = 9%

Eagle Lake = 26.75%

North Mankato = 3.1%

2. Blue Route— Refer to Exhibit B. The Blue Route negatively impacts two recent developments that have been approved and proposed. The first development is Freyberg Properties Addition which was approved by the Mankato City Council on March 23, 2015. The location of the Blue Route conflicts with the location of proposed commercial lots and also coincides with the future right-of-way and street location and intersection with County State Aid Highway 17 (CSAH 17). These right-of-way and street locations/intersections are established by permit with Blue Earth County during right-of-way acquisition associated with the reconstruction of CSAH 17 in 2013. The right-of-way and street width is sixty (60) feet and does not accommodate the proposed Blue Line without substantially impacting the development potential of the abutting lots.

The second recent development is within the planning stages and is shown on Exhibit B as the Groh Property. Similar to the Freyberg Properties Addition, the Blue Line conflicts with proposed right-of-way/street locations that were negotiated and established during the above referenced CSAH 17 reconstruction project. The Groh Property is proposed for residential development and the width the proposed easement for the transmission line would impact the proposed residential lots along the east side.

In addition, along the east side of the Blue Line in this vicinity is an existing business, Javen's Electric, which has a 21,000 square foot building located within 60 feet of the right-of-way/street alignment. Therefore, the Blue Route in this location negatively impacts development potential, approved subdivisions, and existing business/building locations.

Finally, the City would note that the proposed transmission line is located along the western boundary of the recently constructed Eastwood Solar Field. Xcel should explore any possible solar easements that may exist as the transmission line and associated structures may be considered an obstruction if such easements exist.

3. Blue Route – Refer to Exhibit C. The line as proposed is located in Zone C of the Mankato Regional Airport Zoning Designations. Within Zone C, airport height restrictions require that no structure be located above an elevation of 1,171 Mean Sea Level, which is the base of the Horizontal Surface as defined by the Mankato Airport Zoning Ordinance. According to information from the Xcel Energy, the height of the power line towers may be 100 feet or more above the ground elevation. Note, the ground elevation in this area ranges from 980 to 1000+ MSL. Therefore, the height of the towers must be confirmed to be under the Horizontal Surface.

In addition, the location of the transmission line would preclude any possible extension of the cross runway at the Mankato Regional Airport. While not proposed at this time in current planning documents, the extension has been discussed and explored as a possibility in the future if airport operations warrant. The proposed transmission line would negatively impact any such runway extension.

4. Blue Route - Refer to Exhibit D. The City would note that the transmission line is shown crossing a wetland preservation area that was established as part of the required mitigation for the construction of US Highway 14. The wetland preservation area is approximately 50 percent woodland and was approved in 1996 by the United States Corp of Engineers for preservation/mitigation. According to the USCOE permit dated February 21, 1996, a “deed restriction shall prohibit any other fill, discharge, drainage, excavation, grading, dumping, construction, vegetation removal, or other work in the restricted areas by the permittee, any transferee, and any other party unless it is approved in writing by the Corps of Engineers.” The area was subsequently incorporated into the right-of-way of US Highway 14 by the Minnesota Department of Transportation as the permittee. Therefore, Xcel Energy should contact the Minnesota Department of Transportation for further information. Suggested contact is Rebecca Novak, Minnesota Department of Transportation District 7 Environmental Coordinator.

In addition, the proposed transmission line would cross two large underground pipelines in this vicinity as noted on Exhibit D. One of the pipelines is a high pressure natural gas pipeline operated by Alliance Pipeline, LP, and the other is a liquefied petroleum pipeline operated by Kinder Morgan Cochin, LLC. Xcel Energy should contact the owners and operators of these pipelines for concerns and or restrictions. It should be noted that the proposed transmission line crosses the pipelines in other locations along the Blue Route.

5. Blue Route – Refer to Exhibit E. The proposed transmission line would likely conflict with several new building locations on the property owned by Westman Investments, LLC (Westman Property). In addition, to the west of the Westman property is a former and closed demolition landfill that the proposed transmission line would cross. Disruption and/or penetration into the landfill cover may be restricted by Minnesota Pollution Control Agency resulting in long spans between support structures.

Submitted by:

Patrick Hentges
City Manager
City of Mankato
(507) 387-8695
phentges@mankatomn.gov

Attachments: Exhibits