

0 0.25 0.5 Miles
1:22,000

Figure 5
Above-Ground
Preliminary Project Layout
Elk Creek Solar Project
Rock County, MN
43.68038, -96.10199

- Above-Ground Collection Pole
- Adjacent Residence
- Existing Substation
- Collection Line
- Vegetation Screening
- Land Control
- Security Fence
- Access Road
- Solar Array
- Inverter
- Project Substation
- O&M Facility
- Associated Facilities
- Laydown
- NHD Stream
- Drainage Basin



0 250 500 Feet

1:5,500



Figure 6a
Above-Ground
Preliminary Project Layout
Elk Creek Solar Project
Rock County, MN
43.68038, -96.10199

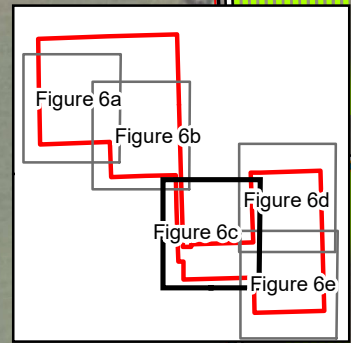
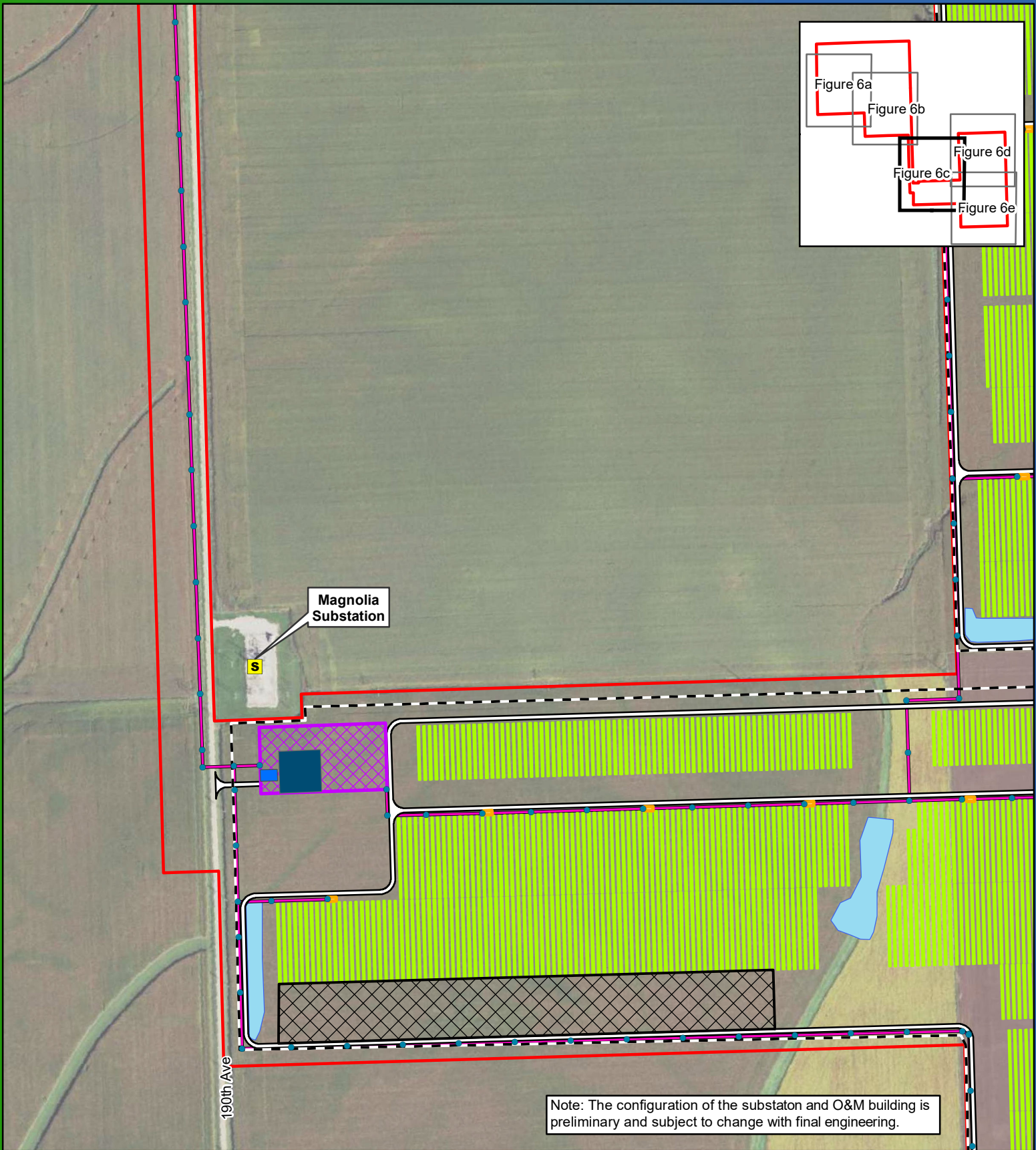
- | | |
|--------------------------------|-------------------------|
| • Above-Ground Collection Pole | ■ Solar Array |
| ● Adjacent Residence | ■ Inverter |
| ■ Existing Substation | ■ Project Substation |
| — Collection Line | ■ O&M Facility |
| ■ Vegetation Screening | ■ Associated Facilities |
| ■ Land Control Area | ■ Laydown Area |
| --- Security Fence | ~ NHD Stream |
| □ Access Road | ○ Drainage Basin |



0 250 500 Feet
1:5,500

Figure 6b
Above-Ground
Preliminary Project Layout
Elk Creek Solar Project
Rock County, MN
43.68038, -96.10199

- Above-Ground Collection Pole
- Adjacent Residence
- Existing Substation
- Collection Line
- Vegetation Screening
- Land Control Area
- - - Security Fence
- Access Road
- Solar Array
- Inverter
- Project Substation
- O&M Facility
- Associated Facilities
- Laydown Area
- ~ NHD Stream
- ~ Drainage Basin



Note: The configuration of the substation and O&M building is preliminary and subject to change with final engineering.



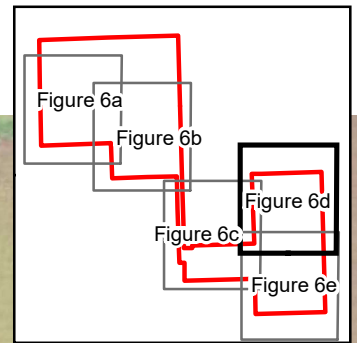
0 250 500 Feet

1:5,500



Figure 6c
Above-Ground
Preliminary Project Layout
Elk Creek Solar Project
Rock County, MN
43.68038, -96.10199

- Above-Ground Collection Pole
- Adjacent Residence
- Existing Substation
- Collection Line
- Vegetation Screening
- Land Control Area
- Security Fence
- Access Road
- Solar Array
- Inverter
- Project Substation
- O&M Facility
- Associated Facilities
- Laydown Area
- NHD Stream
- Drainage Basin



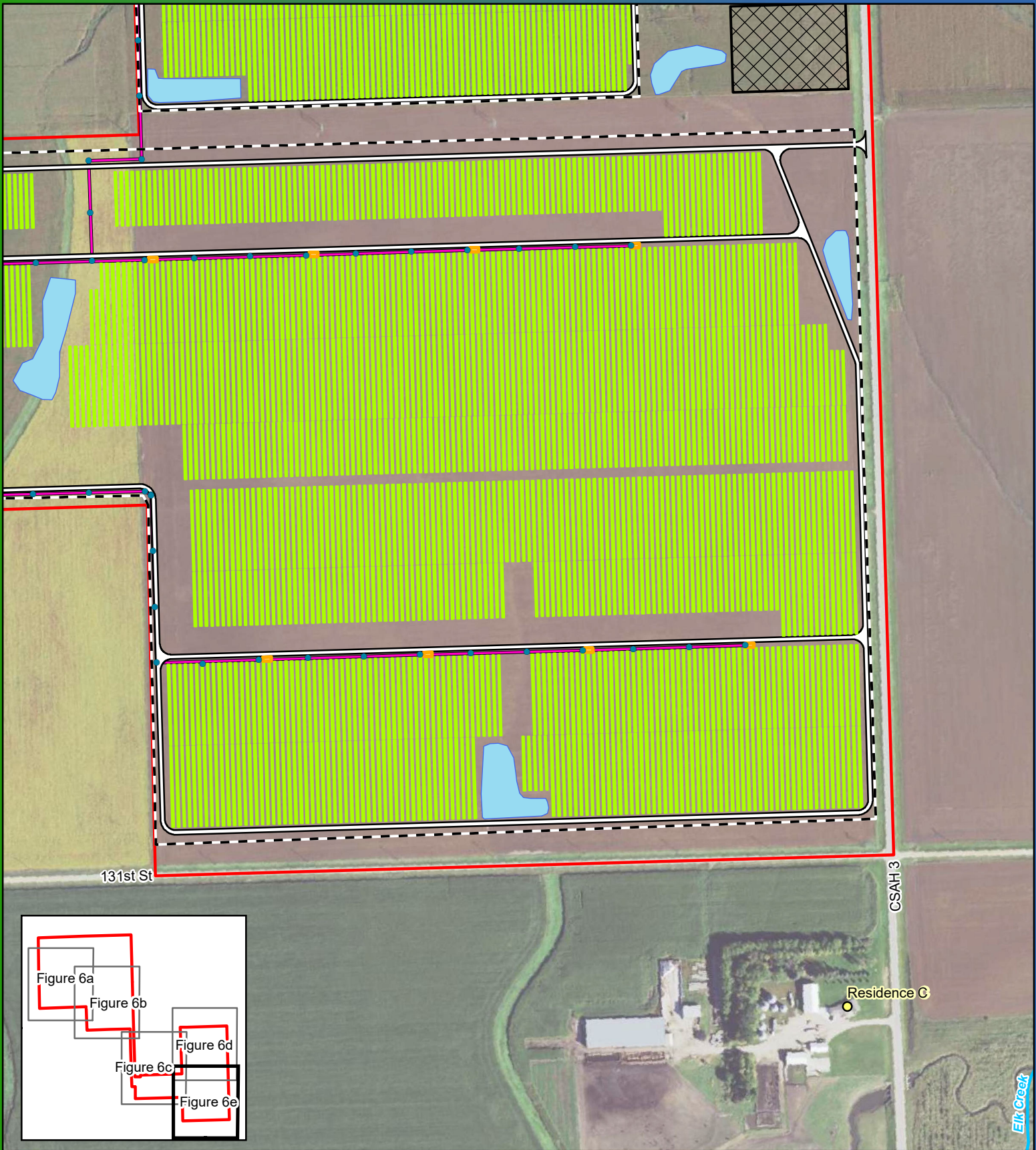
0 250 500 Feet

1:5,500



Figure 6d
Above-Ground
Preliminary Project Layout
Elk Creek Solar Project
Rock County, MN
43.68038, -96.10199

- Above-Ground Collection Pole
- Adjacent Residence
- Existing Substation
- Collection Line
- Vegetation Screening
- Land Control Area
- Security Fence
- Access Road
- Solar Array
- Inverter
- Project Substation
- O&M Facility
- Associated Facilities
- Laydown Area
- NHD Stream
- Drainage Basin



0 250 500 Feet

1:5,500



Figure 6e
Above-Ground
Preliminary Project Layout
Elk Creek Solar Project
Rock County, MN
43.68038, -96.10199

- Above-Ground Collection Pole
- Adjacent Residence
- Existing Substation
- Collection Line
- Vegetation Screening
- Land Control Area
- - - Security Fence
- Access Road
- Solar Array
- Inverter
- Project Substation
- O&M Facility
- Associated Facilities
- Laydown Area
- NHD Stream
- Drainage Basin