

Minnesota Public Utilities Commission			
INFORMATION DOCKET E999/M-20-464		Reporting Period:	
Solar Energy Standard Annual Report		January 1, 2019 - December 31, 2019	
Report Year:		Utility:	
2019		Xcel Energy	
Date Submitted:		June 1, 2020	

Filing Utility Information		Contact Information	
Company ID#	U12000	Contact Name	Amber Hedlund
Company Name	Xcel Energy	Contact Title	Regulatory Case Specialist
Street Address Line 1	414 Nicollet Mall	Contact Telephone	612.337.2268
Street Address Line 2	401-7	Contact Email	Regulatory.records@xcelenergy.com
City	Minneapolis		
State	MN		
Zip Code	55401		

Instructions

Due: June 1, 2019

Reporting Period: preceding calendar year

Complete the following worksheets and e-file in **Excel (XLS or XLSX)** format:

Worksheet 1, Utility Info

Worksheet 2, Retail and Excluded Sales

Worksheet 3, Solar Generation

Worksheet 4, Capacity Factors

Worksheet 5, Additional graphs the utility may choose to provide

Also complete and efile the Solar Energy Standard Report PDF supplement

To e-file, login, or register, at: <https://www.edockets.state.mn.us/EFiling/home.jsp>

For directions on how to e-file, see: <http://www.commerce.state.mn.us/eDocFile/eFilingHelp.html>

For questions about the worksheets, send an email to: hanna.terwilliger@state.mn.us

For questions about e-filing, contact Karen Santori at 651-539-1530 or at karen.santori@state.mn.us.

PROTECTED DATA SHADED

PUBLIC DOCUMENT NOT PUBLIC DATA HAS BEEN EXCISED Minnesota Public Utilities Commission			
INFORMATION DOCKET E999/M-20-464		Reporting Period	January 1, 2019 - December 31, 2019
Solar Energy Standard Annual Report		Utility:	Xcel Energy
Report Year:	2019	Date Submitted:	June 1, 2020

Annual Minnesota retail sales for the reporting year			
Docket No. E999/CI-13-542, Commission Order (April 25, 2014), Order Points 4.A & 4.B			
1. Annual MN retail sales for the reporting year			29,161,074 MWH
			[PROTECTED DATA BEGINS]
2. Annual Excluded customer sales for the reporting year			
3. Annual Minnesota retail sales less exclusions			
PROTECTED DATA ENDS]			

Customer requesting exclusion from the SES that have been approved by the utility						
Docket Nos. E999/CI-13-542, E999/M-14-321, Commission Order (October 23, 2014), Order Point 2.a						
Customer Name	Docket Granting Exclusion	Premise Number	Premise	NAICS	2019 kWh Usage	Refund (\$s)
Previously approved excluded customers:						
[PROTECTED DATA BEGINS]						
PROTECTED DATA ENDS]						
Customer Name	Docket	Premise Number	Premise	NAICS	2018 kWh Usage	Refund (\$s)
New customers requesting exclusion:						
N/A - No additional customers have requested exclusion at this time.						

Minnesota Public Utilities Commission			
INFORMATION DOCKET E999/M-20-464		Reporting Period:	January 1, 2019 - December 31, 2019
Solar Energy Standard Annual Report		Utility:	Xcel Energy
Report Year:	2019	Date Submitted:	June 1, 2020

Solar generation on the utilities' system during the reporting period

Docket No. E999/C1-13-542, Commission Order (April 25, 2014), Order Point 4.E

	Number of Facilities on Utility System	Capacity (MW)	Number registered in M-RETS	Capacity registered in M-RETS (MW)	SRECs Generated
40kW or less	5,124	53.00	53	25.51	30,664
Greater than 40kW	863	687.00	721	927.88	1,228,159

Estimated amount of solar generation a utility would be required to obtain in 2020

Docket No. E999/C1-13-542, Commission Order (April 25, 2014), Order Points 4.F & 4.G

	Capacity (MW)	SRECs (MWh)
Entire 1.5% Standard	235	424,441
Small Scale Carve-Out (10% of 1.5%)	31	42,444
2030 Goal of 10%	1,509	2,621,515

Breakdown of S-RECS generated

Docket No. E999/C1-13-542, Commission Order (April 25, 2014), Order Point 5

	Balance at Beginning of Reporting Year ¹	Accrued in Reporting Year	Used in Reporting Year	Year End Balance
1. Utility-owned solar projects				
2. Solar Facilities that have entered into a PPA with the utility	892,952	398,736		1,291,688
3. Community Solar Gardens				
a. ARR ²	715,747	818,669		1,534,416
b. VOS	133	4,044		4,177
c. Other compensation method				
6. Facilities receiving a VOS rate (not included above)				
7. Facilities under a net metering tariff				
a. Receiving an incentive (any type)	62,324	30,098		92,422
b. Not receiving an incentive				
8. Facilities receiving an incentive (not included above)				
9. Facilities that do not fall into any other category	10,425	7,276		17,701
Total	1,681,581	1,258,823	0	2,940,404

Purchases and sales of S-RECS to meet the SES

Docket No. E999/C1-13-542, Commission Order (April 25, 2014), Order Point 4.K

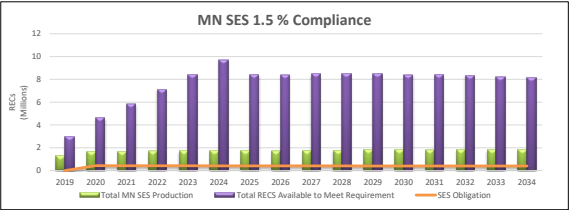
	SRECs Purchased	SRECs Sold
SES (>40W)	0	0
Small Scale Carve Out (<=40kW)	0	0
Total	0	0

1. Beginning of year REC balance includes current solar RECs held in NSP's REC bank. Beginning REC balance may differ from previous year's ending REC balance to accommodate for adjustments made to REC classification, REC allocations, or registration details of qualified solar resources.

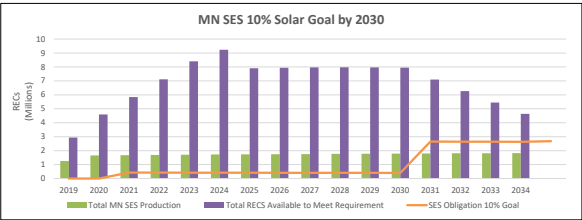
2. Prior Period REC Adjustment for 2018 vintage by M-RETS Admin for Beginning Year Balance

[illegible]

1.5% by 2020

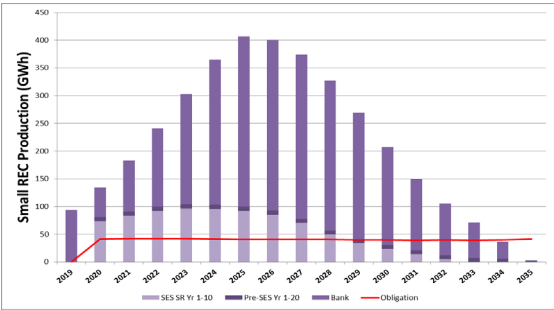


10% by 2030



Carve Out

SREC Fulfillment and Bank w Add Pre-SES (2013), No RECs from Yrs 11-20



SREC Fulfillment and Bank w Add Pre-SES (2013), Add RECs from Yrs 11-20

